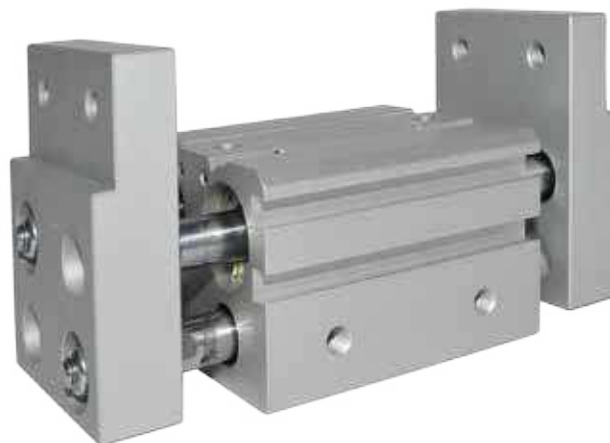


New

SERIE GR02F - PINZE PNEUMATICHE LARGHE

WIDE TYPE PNEUMATIC GRIPPER
GROSSER PNEUMATISCHER GREIFER
PINCE PNEUMATIQUE LARGE
PINZA NEUMÁTICA LARGA
GARRA PNEUMÁTICA LARGA

CARATTERISTICHE TECNICHE
TECHNICAL CHARACTERISTICS
TECHNISCHE ANGABEN
CARACTÉRISTIQUES TECHNIQUES
CARACTERÍSTICAS TÉCNICAS
CARACTERÍSTICAS TÉCNICAS



- 1907/2006
- 2011/65/CE
- SILICON FREE
- PED 2014/68/UE

Materiali	IT	Materials	GB	Materialien	DE
<ul style="list-style-type: none"> • Corpo: Lega Alluminio • Stelo: Acciaio • Guarnizioni: NBR 		<ul style="list-style-type: none"> • Body: Aluminum alloy • Piston rod: Steel • NBR seal 		<ul style="list-style-type: none"> • Körper: Aluminiumlegierung • Kolbenstange: Stahl • Dichtung: NBR 	
Matériaux	FR	Materiales	ES	Materiais	PT
<ul style="list-style-type: none"> • Corps: Alliage d'aluminium • Tige: Acier • Joints: NBR 		<ul style="list-style-type: none"> • Cuerpo: Aleación de aluminio • Eje: Haceró • Juntas: NBR 		<ul style="list-style-type: none"> • Corpo : Liga de alumínio • Haste : Aço • Vedações : NBR 	

Bar

Pressioni

Pressures

Druckbereich

Pressions

Presiones

Pressões

Ø	10	16	20	25	32
bar	min	1,5		1	
	max	6		6	

Temperature

Temperatures

Temperatur

Températures

Temperaturas

Temperaturas

-10 °C

+ 60 °C

Fluidi compatibili

Aria (Lubrificazione non necessaria).

Fluids

Air (Lubrication not necessary).

Geeignete Medien

Luft (Schmierung nicht erforderlich).

Fluides compatibles

Air (Lubrification pas nécessaire).

Fluidos compatibles

Aire (Lubrificación no necesaria).

Fluidos compatíveis

Ar (Lubrificação não necessária).

Alesaggi

Bores

Durchmesser

Diamètres

Diámetros

Diâmetros

10-16-20-25-32 mm

Forza effettiva di presa a 5 bar

Effective gripping force at 5 bar

Effektive Greifkraft bei 5 bar

Force de préhension effective à 5 bar

Fuerza efectiva de agarre 5 bar

Força efetiva de agarre a 5 bar

Ø					
10	16	20	25	32	
14	45	74	131	228	

(Unit: N)



Tolleranza di movimento

Action tolerance

BewegungstoleranzX

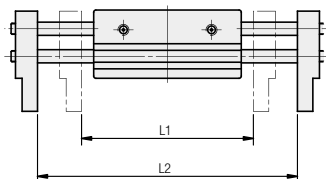
Tolerancia de movimiento

Tolerância de movimento

Course

± 0,2

Ø	Max operating frequency c.p.m	Opening/closing stroke (mm)	Width at closing (mm)	Width at opening (mm)	Weight (g)
		L2-L1	L1	L2	
10	60	20	56	76	280
16	60	30	68	98	585
20	60	40	82	122	1025
25	60	50	100	150	1690
32	30	70	150	220	2905



Punto di presa

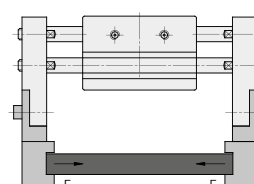
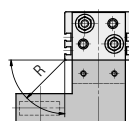
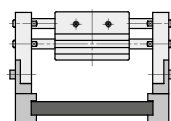
Gripping point

Greifpunkte

Point de préhension

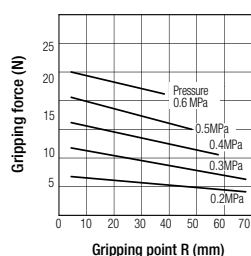
Punto de agarre

Ponto de pega

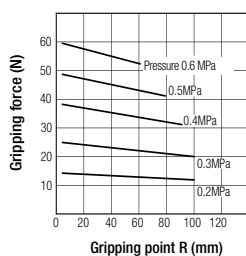


R : gripping point mm
1N ≈ 0.102 kgf
1MPa ≈ 10.2 kgf/cm²

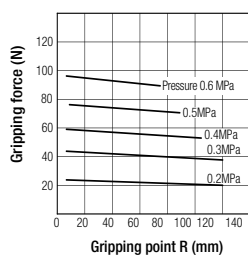
GR02F 010



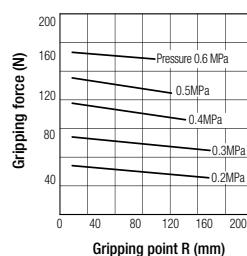
GR02F 016



GR02F 020



GR02F 025



GR02F 032

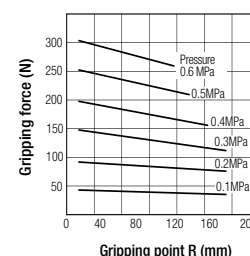


Tabella dei codici di ordinazione

Ordering codes

Bestellschlüssel

Code de commande

Tabla de codificación para pedidos

Tabela de codificação para compra

SERIE	Ø mm
-------	---------

G R 0 2 F 0 1 0

Doppio Effetto Magnetico 010
Double Acting Magnetic 016
Doppeltwirkend Magnetisch 020
Double Effet Magnétique 025
Doble efecto magnético 032
Dupla Ação Magnético



Sensori consigliati

Sensors recommended

Empfohlene Sensoren

Capteurs recommandés

Sensores recomendados

Sensores aconselhados

DC 03 PM8
DC 03 P2M

DC 04 PM8
DC 04 P2M



Adattatore per sensore

Sensor adapter

Sensor Adapter

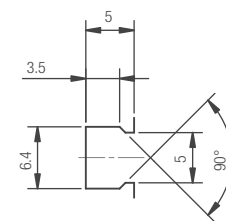
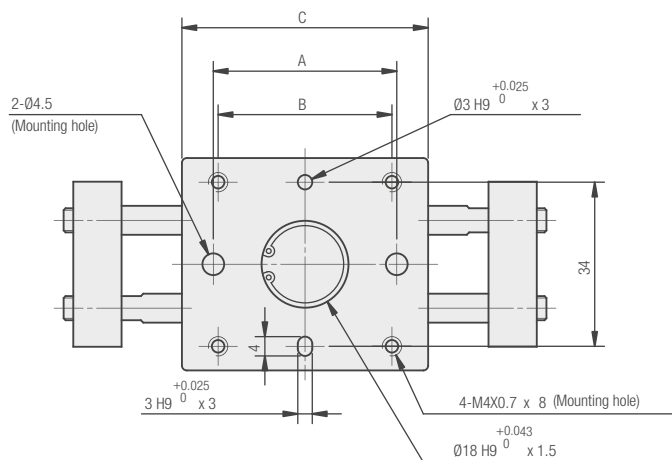
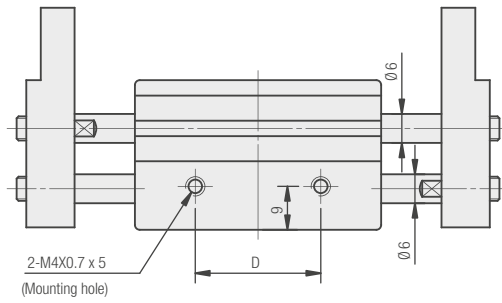
Adaptateur pour capteur

Adaptador para sensor

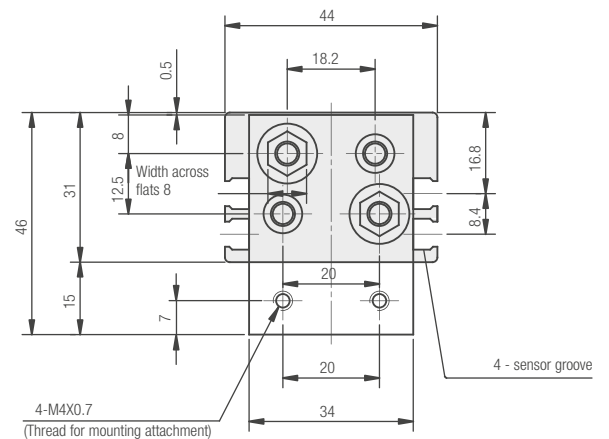
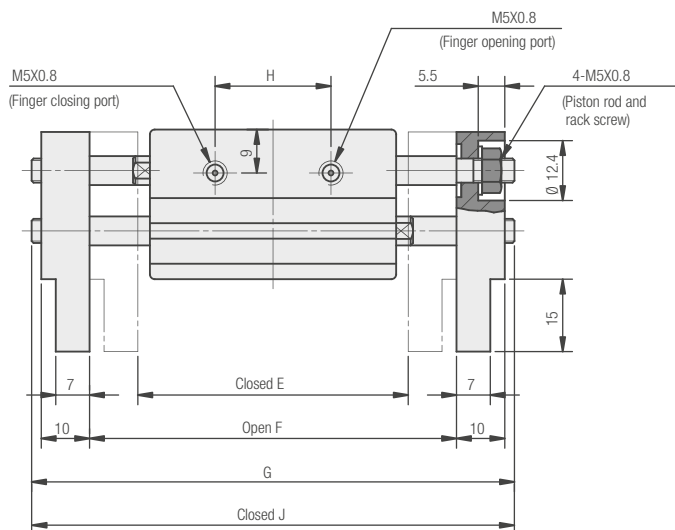
Adaptador para sensor

DC 10 001

GR02F 010

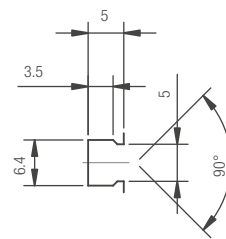
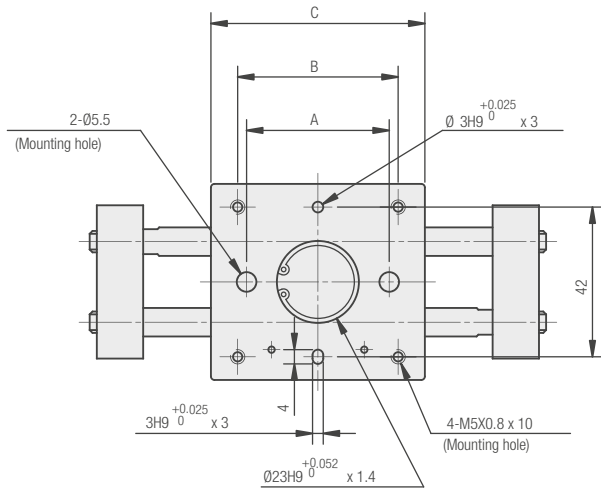
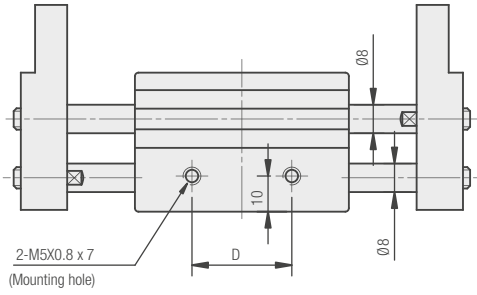


Sensor groove dimensions

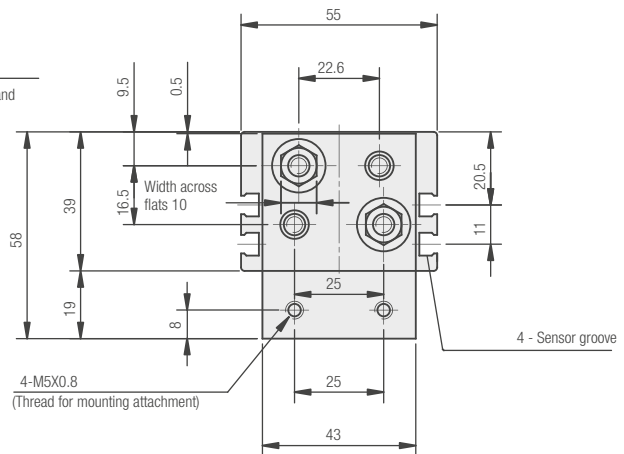
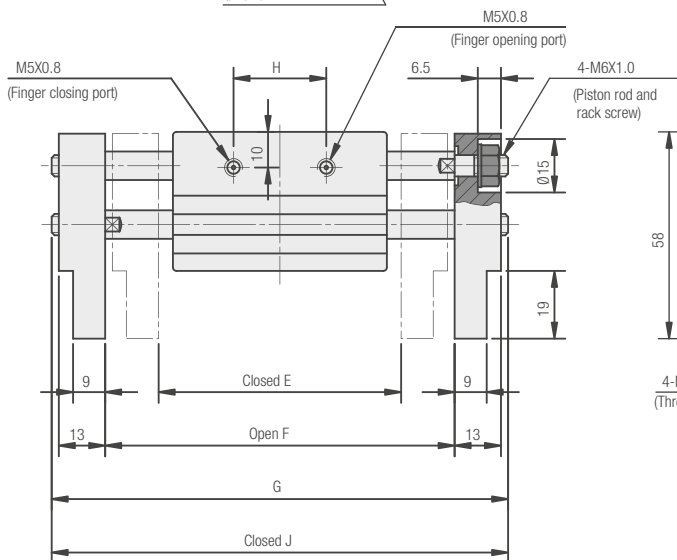


A	B	C	D	E	F	G	H	J
38	36	51	26	56	76	100	24	80

GR02F 016

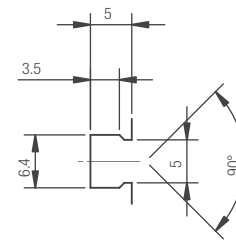
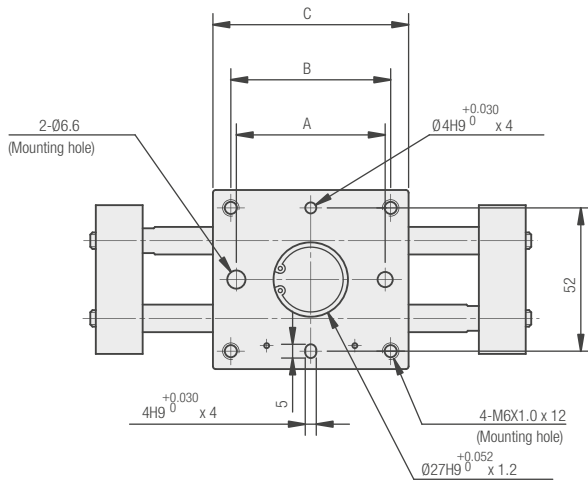
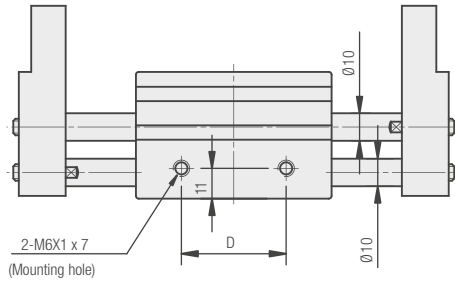


Sensor groove dimensions

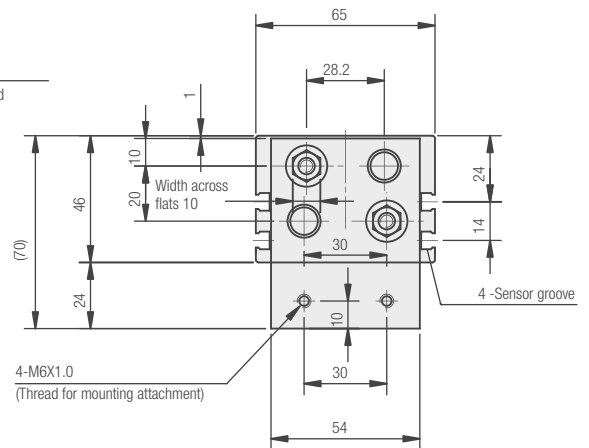
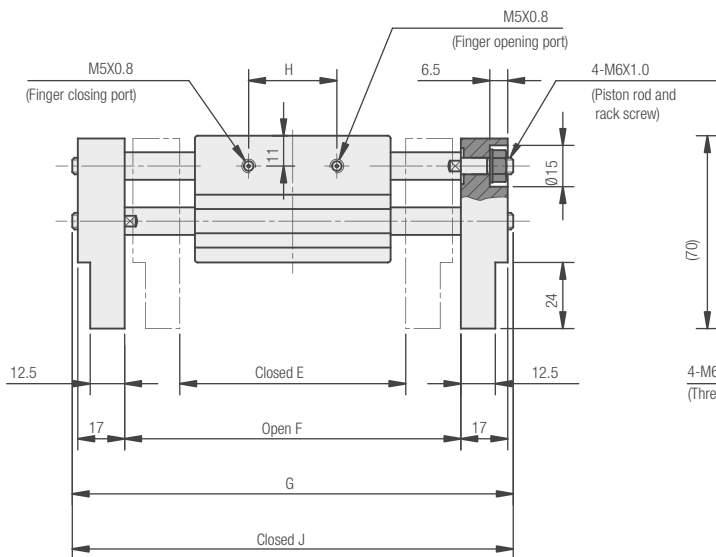


A	B	C	D	E	F	G	H	J
40	45	60	28	68	98	128	26	98

GR02F 020

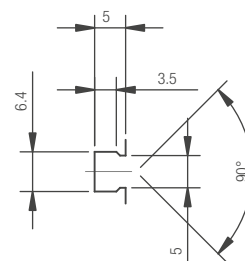
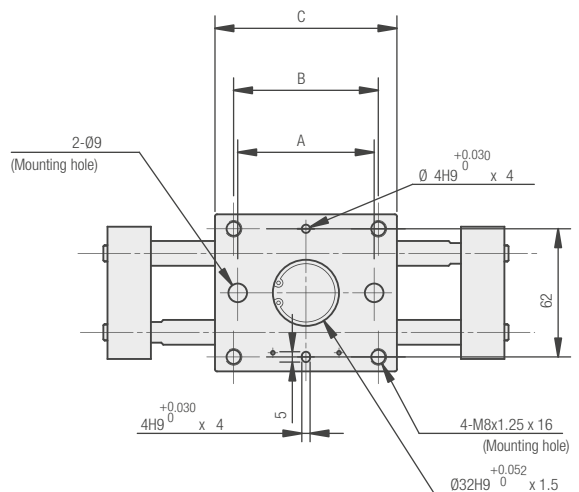
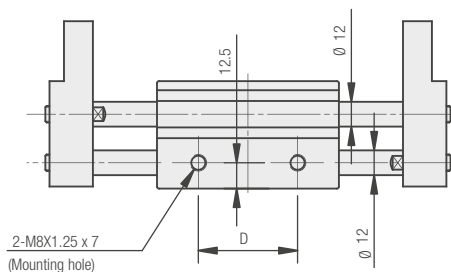


Sensor groove dimensions

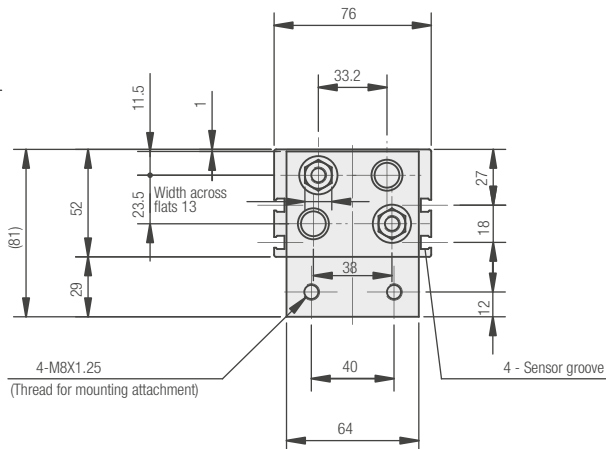
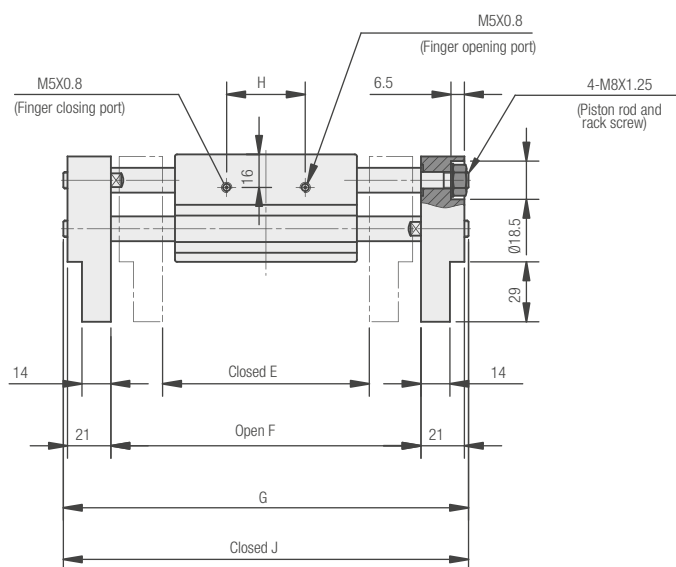


A	B	C	D	E	F	G	H	J
54	58	71	38	82	122	160	32	120

GR02F 025

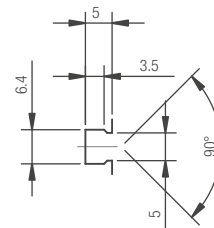
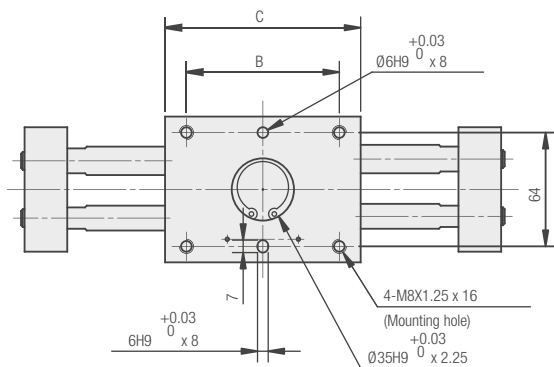
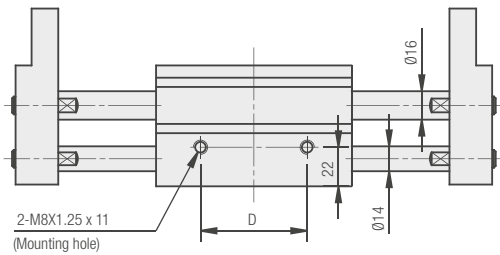


Sensor groove dimensions

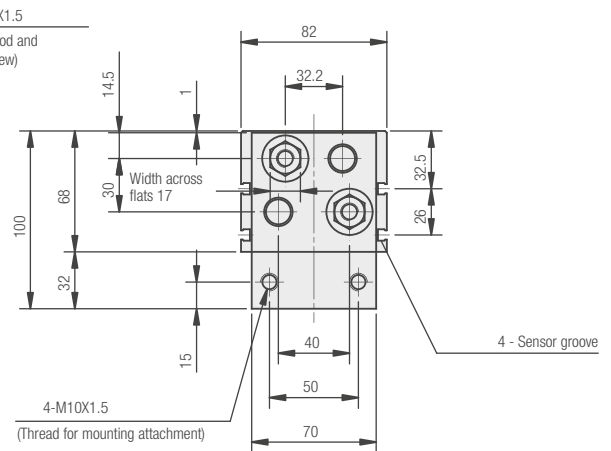
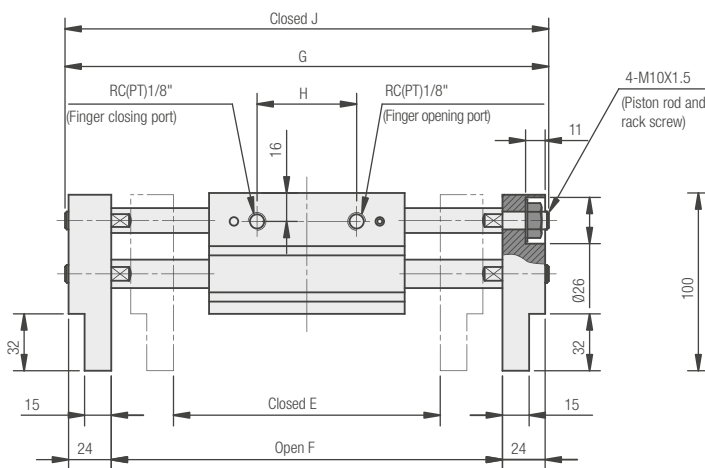


A	B	C	D	E	F	G	H	J
66	70	88	48	100	150	196	38	146

GR02F 032



Sensor groove dimensions



B	C	D	E	F	G	H	J
86	110	60	150	220	272	56	202