

50050N**RACCORDO DIRITTO INTERMEDIO DI ATTRAVERSAMENTO**

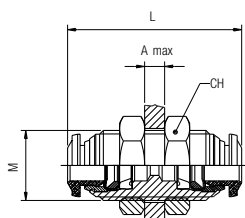
BULKHEAD CONNECTOR

SCHOTTVERSCHRAUBUNG

RACCORD TRAVERSÉE DE CLOISON

RACOR RECTO INTERMEDIO PASATABIQUES

CONEXÃO PASSA-MURO RETA TUBO-TUBO



| Code | Tube | M | L | CH | A max | Pack. |
|--------------|------|-------|------|----|-------|-------|
| 50050 00 N07 | 3 | M10x1 | 26 | 14 | 5 | 10 |
| 50050 00 N01 | 4 | M12x1 | 31.5 | 17 | 7 | 10 |
| 50050 00 N06 | 5 | M14x1 | 33 | 17 | 7 | 10 |
| 50050 00 N02 | 6 | M14x1 | 35 | 17 | 9.5 | 10 |
| 50050 00 N03 | 8 | M16x1 | 37 | 19 | 10.5 | 10 |
| 50050 00 N04 | 10 | M20x1 | 43 | 24 | 12.5 | 10 |
| 50050 00 N05 | 12 | M22x1 | 48 | 26 | 16.5 | 10 |
| 50050 00 N08 | 14 | M23x1 | 49 | 27 | 16.5 | 10 |

55111**RACCORDO A L ORIENTABILE MASCHIO "UNIVERSAL SHORT"**

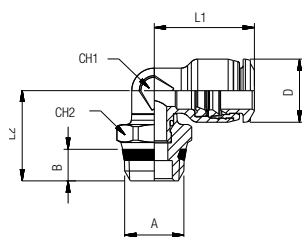
ORIENTING ELBOW MALE ADAPTOR "UNIVERSAL SHORT"

WINKELVERSCHRAUBUNG KONISCH (DREHBAR) "UNIVERSAL SHORT"

EQUERRE ORIENTABLE MÂLE, CONIQUE "UNIVERSAL SHORT"

RACOR A L ORIENTABLE MACHO CÓNICO "UNIVERSAL SHORT"

CONEXÃO MACHO EM "L" ORIENTÁVEL COM ROSCA "UNIVERSAL SHORT"



| Code | Tube | A | B | L1 | L2 | CH1 | CH2 | D | Pack. |
|--------------|------|-----|-----|------|------|-----|-----|----|-------|
| 55111 00 001 | 4 | 1/8 | 5.5 | 16.5 | 16.5 | 7 | 13 | 10 | 10 |
| 55111 00 002 | 4 | 1/4 | 7 | 16.5 | 18 | 7 | 15 | 10 | 10 |
| 55111 00 003 | 5 | 1/8 | 5.5 | 20 | 17.5 | 9 | 13 | 12 | 10 |
| 55111 00 004 | 6 | 1/8 | 5.5 | 20.5 | 17.5 | 9 | 13 | 12 | 10 |
| 55111 00 005 | 6 | 1/4 | 7 | 20.5 | 18.9 | 9 | 15 | 12 | 10 |
| 55111 00 006 | 6 | 3/8 | 7.5 | 20.5 | 20 | 9 | 17 | 12 | 10 |
| 55111 00 007 | 6 | 1/2 | 9 | 20.5 | 22 | 9 | 21 | 12 | 10 |
| 55111 00 008 | 8 | 1/8 | 5.5 | 22 | 18.5 | 10 | 13 | 14 | 10 |
| 55111 00 009 | 8 | 1/4 | 7 | 22 | 20 | 10 | 15 | 14 | 10 |
| 55111 00 010 | 8 | 3/8 | 7.5 | 22 | 20.5 | 10 | 17 | 14 | 10 |
| 55111 00 011 | 8 | 1/2 | 9 | 22 | 23 | 10 | 21 | 14 | 10 |
| 55111 00 012 | 10 | 1/4 | 7 | 26.5 | 21.8 | 13 | 16 | 17 | 10 |
| 55111 00 013 | 10 | 3/8 | 7.5 | 26.5 | 21.8 | 13 | 17 | 17 | 10 |
| 55111 00 014 | 10 | 1/2 | 9 | 26.5 | 24.3 | 13 | 21 | 17 | 10 |
| 55111 00 015 | 12 | 1/4 | 7 | 30 | 23.1 | 16 | 16 | 20 | 10 |
| 55111 00 016 | 12 | 3/8 | 7.5 | 30 | 23.1 | 16 | 17 | 20 | 10 |
| 55111 00 017 | 12 | 1/2 | 9 | 30 | 25.6 | 16 | 21 | 20 | 10 |
| 55111 00 018 | 14 | 3/8 | 7.5 | 31 | 26.5 | 18 | 20 | 21 | 10 |
| 55111 00 019 | 14 | 1/2 | 9 | 31 | 27 | 18 | 21 | 21 | 10 |

55116**RACCORDO A L ORIENTABILE MASCHIO CILINDRICO**

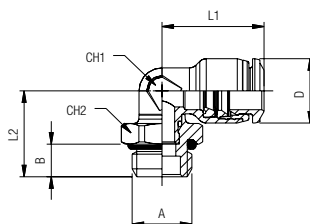
ORIENTING ELBOW MALE ADAPTOR (PARALLEL)

WINKELVERSCHRAUBUNG ZYLINDRISCH (DREHBAR)

EQUERRE ORIENTABLE MÂLE, CYLINDRIQUE

RACOR A L ORIENTABLE MACHO CILÍNDRICO CON TÓRICA

CONEXÃO MACHO EM "L" ORIENTÁVEL COM ROSCA PARALELA

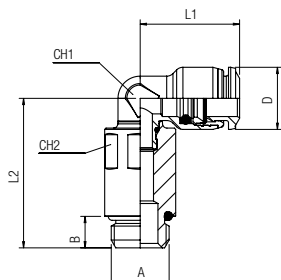


| Code | Tube | A | B | L1 | L2 | CH1 | CH2 | D | Pack. |
|--------------|------|--------|-----|------|------|-----|-----|----|-------|
| 55116 00 001 | 4 | M3x0.5 | 3 | 16.5 | 12 | 7 | 9 | 10 | 10 |
| 55116 00 002 | 4 | M5 | 3.6 | 16.5 | 13.8 | 7 | 9 | 10 | 10 |
| 55116 00 003 | 4 | M7x1 | 4.8 | 16.5 | 14.4 | 7 | 9 | 10 | 10 |
| 55116 00 004 | 4 | 1/8 | 5.4 | 16.5 | 15 | 7 | 13 | 10 | 10 |
| 55116 00 005 | 4 | 1/4 | 7.1 | 16.5 | 16.6 | 9 | 16 | 10 | 10 |
| 55116 00 007 | 5 | M5 | 3.6 | 20 | 14.7 | 9 | 9 | 12 | 10 |
| 55116 00 009 | 5 | 1/8 | 5.4 | 20 | 15.8 | 9 | 13 | 12 | 10 |
| 55116 00 011 | 6 | M5 | 3.6 | 20.5 | 14.7 | 9 | 9 | 12 | 10 |
| 55116 00 013 | 6 | 1/8 | 5.4 | 20.5 | 15.8 | 9 | 13 | 12 | 10 |
| 55116 00 014 | 6 | 1/4 | 7.1 | 20.5 | 17.5 | 9 | 16 | 12 | 10 |
| 55116 00 015 | 6 | 3/8 | 8.1 | 20.5 | 19 | 9 | 20 | 12 | 10 |
| 55116 00 016 | 6 | 1/2 | 9.6 | 20.5 | 21 | 9 | 25 | 12 | 10 |
| 55116 00 017 | 8 | 1/8 | 5.4 | 22 | 19.4 | 10 | 13 | 14 | 10 |
| 55116 00 018 | 8 | 1/4 | 7.1 | 22 | 18.7 | 10 | 16 | 14 | 10 |
| 55116 00 019 | 8 | 3/8 | 8.1 | 22 | 20.1 | 10 | 20 | 14 | 10 |
| 55116 00 020 | 8 | 1/2 | 9.6 | 22 | 22.1 | 10 | 25 | 14 | 10 |
| 55116 00 021 | 10 | 1/4 | 7.1 | 26.5 | 22.8 | 13 | 16 | 17 | 10 |
| 55116 00 022 | 10 | 3/8 | 8.1 | 26.5 | 22.3 | 13 | 20 | 17 | 10 |
| 55116 00 023 | 10 | 1/2 | 9.6 | 26.5 | 23.8 | 13 | 25 | 17 | 10 |
| 55116 00 024 | 12 | 1/4 | 7.1 | 30 | 24.1 | 16 | 16 | 20 | 10 |
| 55116 00 025 | 12 | 3/8 | 8.1 | 30 | 23.6 | 16 | 20 | 20 | 10 |
| 55116 00 026 | 12 | 1/2 | 9.6 | 30 | 25.1 | 16 | 25 | 20 | 10 |
| 55116 00 027 | 14 | 3/8 | 8.1 | 31 | 28.1 | 18 | 20 | 21 | 10 |
| 55116 00 028 | 14 | 1/2 | 9.6 | 31 | 26.1 | 18 | 25 | 21 | 10 |

55126

RACCORDO A L ORIENTABILE PROLUNGATO MASCHIO CILINDRICO

EXTENDED ORIENTING ELBOW MALE ADAPTOR (PARALLEL)
 VERLÄNGERTE WINKELVERSCHRÄUBUNG ZYLINDRISCH
 EQUERRE PROLONGÉE MÂLE ORIENTABLE CYLINDRIQUE
 RACOR A L ORIENTABLE PROLONGADO MACHO CIL. CON TORICA
 CONEXÃO COTOVELO ORIENTÁVEL PROLONGADO ROSCA MACHO PARALELA



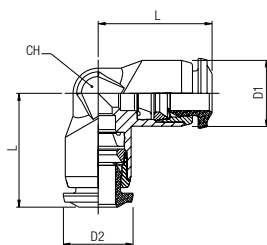
| Code | Tube | A | B | L1 | L2 | CH1 | CH2 | D | Pack. |
|--------------|------|-----|-----|------|------|-----|-----|------|-------|
| 55126 00 002 | 4 | M5 | 3,6 | 16,5 | 27,5 | 7 | 8 | 10 | 10 |
| 55126 00 004 | 4 | 1/8 | 5,4 | 16,5 | 28,5 | 7 | 12 | 10 | 10 |
| 55126 00 008 | 6 | M5 | 3,6 | 20,5 | 29,5 | 9 | 8 | 12,5 | 10 |
| 55126 00 009 | 6 | 1/8 | 5,4 | 20,5 | 29,5 | 9 | 12 | 12,5 | 10 |
| 55126 00 013 | 8 | 1/8 | 5,4 | 22,5 | 34,5 | 10 | 12 | 14 | 10 |
| 55126 00 014 | 8 | 1/4 | 7,1 | 22,5 | 33,5 | 10 | 15 | 14 | 10 |

55130

RACCORDO A L INTERMEDIO

ELBOW CONNECTOR
 WINKELVERSCHRÄUBUNG
 RACCORD EQUERRE
 RACOR A L INTERMEDIO
 CONEXÃO EM "L" TUBO-TUBO

New



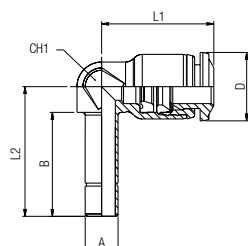
| Code | D1 | D2 | L | D | CH | Pack. |
|--------------|----|----|------|----|----|-------|
| 55130 00 002 | 4 | 4 | 16.5 | 10 | 9 | 10 |
| 55130 00 003 | 5 | 5 | 20 | 12 | 11 | 10 |
| 55130 00 004 | 6 | 6 | 20.5 | 12 | 11 | 10 |
| 55130 00 009 | 8 | 6 | 22,5 | 14 | 13 | 10 |
| 55130 00 005 | 8 | 8 | 22 | 14 | 13 | 10 |
| 55130 00 012 | 10 | 6 | 26 | 17 | 16 | 10 |
| 55130 00 010 | 10 | 8 | 26 | 17 | 16 | 10 |
| 55130 00 006 | 10 | 10 | 26,5 | 17 | 16 | 10 |
| 55130 00 011 | 12 | 10 | 30,5 | 20 | 19 | 10 |
| 55130 00 007 | 12 | 12 | 30 | 20 | 19 | 10 |
| 55130 00 008 | 14 | 14 | 30.5 | 21 | 20 | 10 |

55140

RACCORDO A L CON CODA LISCIA CURTA

ORIENTING ELBOW
 WINKELSTECKVERSCHRÄUBUNG KURZ
 RACCORD EQUERRE ENCLIQUETABLE
 RACOR A L ORIENTABLE CON ESPIGA LISA CORTA
 CONEXÃO EM "L" COM PONTA LISA E CURTA

New



| Code | Tube | A | B | L1 | L2 | CH1 | D | Pack. |
|--------------|------|----|------|------|------|-----|------|-------|
| 55140 00 001 | 4 | 4 | 17 | 16.5 | 20.8 | 7 | 10 | 10 |
| 55140 00 002 | 4 | 6 | 19 | 16.5 | 22.8 | 7 | 10 | 10 |
| 55140 00 005 | 6 | 6 | 19 | 20.5 | 23.7 | 9 | 12.5 | 10 |
| 55140 00 006 | 6 | 4 | 17 | 20.5 | 21.7 | 9 | 12.5 | 10 |
| 55140 00 012 | 6 | 8 | 20 | 22.5 | 26 | 10 | 14 | 10 |
| 55140 00 007 | 8 | 8 | 20 | 22 | 26 | 10 | 14 | 10 |
| 55140 00 008 | 8 | 10 | 21.8 | 22 | 27.6 | 10 | 14 | 10 |
| 55140 00 009 | 10 | 10 | 22.5 | 26.5 | 30 | 13 | 17 | 10 |
| 55140 00 010 | 10 | 12 | 24.7 | 26.5 | 32.2 | 13 | 17 | 10 |
| 55140 00 011 | 12 | 12 | 25.5 | 30 | 33.5 | 16 | 20 | 10 |

55150

RACCORDO A L CON CODA LISCIA LUNGA

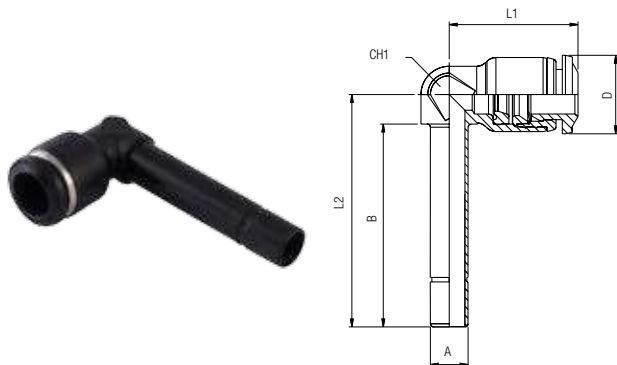
ORIENTING ELBOW

WINKELSTECKVERSCHRAUBUNG LANG

RACCORD EQUERRE ENCLIQUETABLE, RALLONGÉ

RACOR A L ORIENTABLE CON ESPIGA LISA LARGA

CONEXÃO EM "L" COM PONTA LISA E LONGA



| Code | Tube | A | B | L1 | L2 | CH1 | D | Pack. |
|--------------|------|----|------|------|------|-----|------|-------|
| 55150 00 001 | 4 | 4 | 28 | 16.5 | 31.8 | 7 | 10 | 10 |
| 55150 00 002 | 4 | 6 | 30.5 | 16.5 | 34.3 | 7 | 10 | 10 |
| 55150 00 005 | 6 | 6 | 32.3 | 20.5 | 37 | 9 | 12.5 | 10 |
| 55150 00 006 | 6 | 4 | 30 | 20.5 | 34.7 | 9 | 12.5 | 10 |
| 55150 00 007 | 8 | 8 | 36 | 22 | 42 | 10 | 14 | 10 |
| 55150 00 008 | 8 | 10 | 37.5 | 22 | 43.1 | 10 | 14 | 10 |
| 55150 00 009 | 10 | 10 | 40.8 | 26.5 | 48.3 | 13 | 17 | 10 |
| 55150 00 010 | 10 | 12 | 43.2 | 26.5 | 50.7 | 13 | 17 | 10 |
| 55150 00 011 | 12 | 12 | 47 | 31 | 55 | 16 | 20 | 10 |

55160

RACCORDO A 45° CON CODA LISCIA CORTA

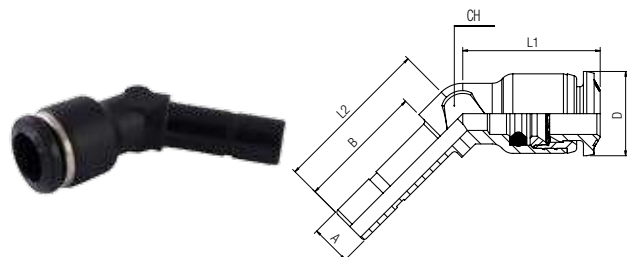
45° ORIENTING ELBOW

WINKELSTECKVERSCHRAUBUNG 45°

RACCORD EQUERRE ENCLIQUETABLE À 45°

RACOR A 45° CON ESPIGA LISA CORTA

CONEXÃO A 45° COM PONTA LISA CURTA



| Code | Tube | A | B | L1 | L2 | CH1 | D | Pack. |
|--------------|------|----|------|------|------|-----|----|-------|
| 55160 00 001 | 4 | 4 | 17 | 12,5 | 21 | 7 | 10 | 10 |
| 55160 00 005 | 6 | 6 | 19 | 20,5 | 23,5 | 9 | 12 | 10 |
| 55160 00 007 | 8 | 8 | 20 | 22 | 25 | 10 | 14 | 10 |
| 55160 00 009 | 10 | 10 | 22,5 | 26,5 | 30 | 13 | 17 | 10 |
| 55160 00 011 | 12 | 12 | 25,5 | 30 | 33,5 | 16 | 20 | 10 |

55170

RACCORDO ORIENTABILE A 45° MASCHIO "UNIVERSAL SHORT"

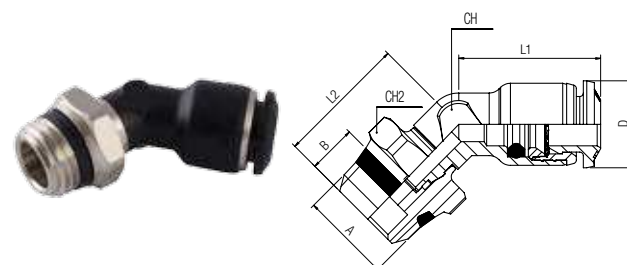
45° ORIENTING ELBOW MALE ADAPTOR "UNIVERSAL SHORT"

WINKELVERSCHRAUBUNG 45° KONISCH (DREHBAR) "UNIVERSAL SHORT"

EQUERRE À 45° ORIENTABLE MÂLE, CONIQUE "UNIVERSAL SHORT"

RACOR A 45° ORIENTABLE MACHO "UNIVERSAL SHORT"

CONEXÃO ORIENTÁVEL A 45° ROSCA MACHO "UNIVERSAL SHORT"



| Code | Tube | A | B | L1 | L2 | CH1 | CH2 | D | Pack. |
|--------------|------|-----|-----|------|------|-----|-----|----|-------|
| 55170 00 001 | 4 | 1/8 | 5,5 | 12,5 | 16,5 | 7 | 13 | 10 | 10 |
| 55170 00 004 | 6 | 1/8 | 5,5 | 20,5 | 17,5 | 9 | 13 | 12 | 10 |
| 55170 00 005 | 6 | 1/4 | 7 | 20,5 | 18,9 | 9 | 15 | 12 | 10 |
| 55170 00 008 | 8 | 1/8 | 5,5 | 22 | 18,5 | 10 | 13 | 14 | 10 |
| 55170 00 009 | 8 | 1/4 | 7 | 22 | 20 | 10 | 15 | 14 | 10 |
| 55170 00 010 | 8 | 3/8 | 7,5 | 22 | 20,5 | 10 | 17 | 14 | 10 |
| 55170 00 012 | 10 | 1/4 | 7 | 26,5 | 21,8 | 13 | 16 | 17 | 10 |
| 55170 00 013 | 10 | 3/8 | 7,5 | 26,5 | 21,8 | 13 | 17 | 17 | 10 |
| 55170 00 014 | 10 | 1/2 | 9 | 26,5 | 24,3 | 13 | 21 | 17 | 10 |
| 55170 00 015 | 12 | 1/4 | 7 | 30 | 23,1 | 16 | 16 | 20 | 10 |
| 55170 00 016 | 12 | 3/8 | 7,5 | 30 | 23,1 | 16 | 17 | 20 | 10 |
| 55170 00 017 | 12 | 1/2 | 9 | 30 | 25,6 | 16 | 21 | 20 | 10 |