

### 40550V

#### RACCORDO A L ORIENTABILE MASCHIO CILINDRICO

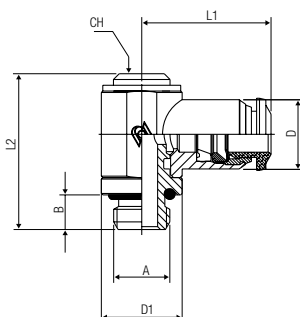
ORIENTING SINGLE BANJO BODY MALE

WINKELVERSCHRAUBUNG ZYLINDRISCH (DREHBAR)

EQUERRE ORIENTABLE MÂLE, CYLINDRIQUE

RACOR A L ORIENTABLE MACHO CILÍNDRICO CON TÓRICA

CONEXÃO MACHO EM "L" ORIENTÁVEL COM ROSCA PARALELA



Code	Tube	A	B	L1	L2	CH	D1	D	Pack.
40550 V0 001	4	M5	5	19	24.5	-	9	10	10
40550 V0 002	4	1/8	6	21	28	5	14	10	10
40550 V0 015	6	M5	5	20.5	24.5	-	9	12.5	10
40550 V0 003	6	1/8	6	22.5	28	5	14	12.5	10
40550 V0 004	6	1/4	8	25	31	6	18	12.5	10
40550 V0 005	8	1/8	6	24	28	5	14	14	10
40550 V0 006	8	1/4	8	26	31	6	18	14	10
40550 V0 007	8	3/8	9	28	35.5	7	21	14	10
40550 V0 008	10	1/4	8	29	31	6	18	17	10
40550 V0 009	10	3/8	9	30.5	35.5	7	21	17	10
40550 V0 011	12	3/8	9	32.5	35.5	7	21	21.5	10

### 50600V

#### ADATTATORE MASCHIO CILINDRICO

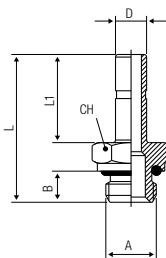
MALE ADAPTOR PARALLEL

EINSCHRAUBSTECKVERSCHRAUBUNG ZYLINDRISCH

ADAPTATEUR ENCLIQUETABLE MÂLE, CYLINDRIQUE

ADAPTADOR MACHO CILÍNDRICO CON TÓRICA

ADAPTADOR MACHO COM ROSCA PARALELA



Code	D	A	B	L	L1	CH	Pack.
50600 V0 001	4	M5	4	24	15	8	10
50600 V0 002	4	1/8	6	26.5	15	13	10
50600 V0 015	6	M5	4	26	17	8	10
50600 V0 003	6	1/8	6	28.5	17	13	10
50600 V0 004	6	1/4	8	31	17	16	10
50600 V0 005	8	1/8	6	29.5	18	13	10
50600 V0 006	8	1/4	8	32	18	16	10
50600 V0 007	8	3/8	9	33.5	18	20	10
50600 V0 016	10	1/8	6	33.5	22	13	10
50600 V0 008	10	1/4	8	36	22	16	10
50600 V0 009	10	3/8	9	37.5	22	20	10
50600 V0 010	12	1/4	8	38.5	24.5	16	10
50600 V0 011	12	3/8	9	40	24.5	20	10
50600 V0 018	14	1/2	10	44	26.5	24	10

### CH028

#### ADATTATORE MASCHIO CON ATTACCO PORTAGOMMA

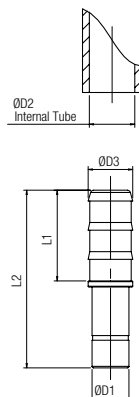
MALE HOSE ADAPTER

EINSTECK-SCHLAUCHTÜLLE

DOUILLE CANNELEE ENCLIQUETABLE POUR TUYAU

ADAPTADOR MACHO CON ESPIGA

ADAPTADOR MACHO COM ESPIGÃO

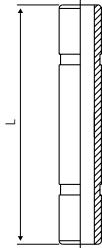


Code	D1	D3	D2	L1	L2	Pack.
CH028 00 01 FS NB	12	10	8	22,5	49	10
CH028 00 01 GP NB	8	10	8	22,5	42,5	10
CH028 00 01 GQ NB	12	14,5	12,5	29,5	56	10
CH028 00 01 WI NB	8	8,3	6,3	22,5	42,5	10
CH028 00 01 Y1 NB	12	12	10	27,5	56	10

## 50625

### GIUNZIONE DOPPIA

DOUBLE JOINT  
DOPPELSTECKER  
JONCTION DOUBLE  
UNIÓN DOBLE  
JUNÇÃO DUPLA

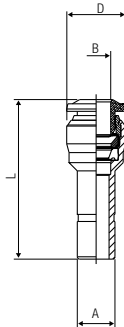


Code	Tube	L	Pack.
50625 00 01 X1 NB	4	31	10
50625 00 01 X4 NB	6	34	10
50625 00 01 X7 NB	8	36	10
50625 00 01 X9 NB	10	45	10
50625 00 01 Y1 NB	12	50	10

## 40700V

### RIDUZIONE

REDUCER  
REDUZIERUNG  
RÉDUCTION ENCLIQUETABLE  
REDUCCION  
REDUÇÃO

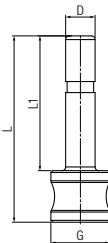


Code	A	B	L	D	Pack.
40700 V0 001	6	4	30	12.5	10
40700 V0 008	8	4	33	14	10
40700 V0 002	8	6	34	14	10
40700 V0 009	10	4	32	17	10
40700 V0 003	10	8	38	17	10
40700 V0 007	12	8	39	21.5	10
40700 V0 010	12	10	43	17.5	10

## 57610

### TAPPO

PLUG  
VERSCHLUSSZAPFEN  
BOUCHON  
TAPÓN  
TAMPÃO

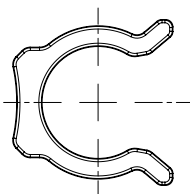


Code	D	G	L	L1	Pack.
57610 00 01 X1 NB	4	8	25,5	18,5	10
57610 00 01 X4 NB	6	8	27,5	20,5	10
57610 00 01 X7 NB	8	12	29,5	21,5	10
57610 00 01 X9 NB	10	12	32,5	24,5	10
57610 00 01 Y1 NB	12	16	36,5	27,5	10
57610 00 01 Y3 NB	14	16	35,5	26,5	10

## 50980

### CLIP DI SICUREZZA

SECURITY CLIPS  
SICHERHEITSClip  
CLIP DE SECURITÉ  
CLIP DE SEGURIDAD ROJO  
CLIP DE SEGURANÇA



Code	Tube	Pack.
50980 00 32 X1 RO	4-(5/32)	50
50980 00 32 X4 RO	6-(1/4)	50
50980 00 32 X7 RO	8-(5/16)	50
50980 00 32 X9 RO	10-(3/8)	50
50980 00 32 Y1 RO	12-(1/2)	50