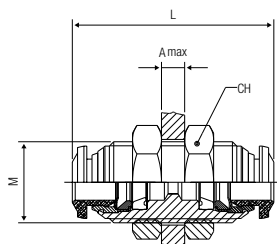


### 40050V

**RACCORDO DIRITTO INTERMEDIO DI ATTRAVERSAMENTO**

BULKHEAD CONNECTOR  
 SCHOTTVERSCHRAUBUNG  
 RACCORD TRAVERSÉE DE CLOISON  
 RACOR RECTO INTERMEDIO PASATABIQUES  
 CONEXÃO PASSA-MURO RETA TUBO-TUBO

Code	Tube	M	L	CH	A <sub>max</sub>	Pack.
40050 V0 001	4 (5/32)	M12x1	31.5	17	7	10
40050 V0 002	6	M14x1	35	17	9.5	10
40050 V0 003	8 (5/16)	M16x1	37	19	10.5	10
40050 V0 004	10	M20x1	43	24	12.5	10
40050 V0 005	12	M22x1	48	26	16.5	10

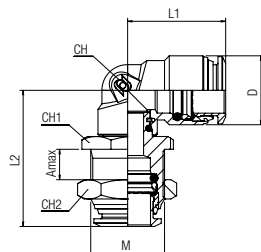


### 40060V

**RACCORDO A L ORIENTABILE INTERMEDIO DI ATTRAVERSAMENTO**

BULKHEAD ORIENTING ELBOW  
 WINKEL-SCHOTTVERSCHRAUBUNG (DREHBAR)  
 RACCORD EQUERRE ORIENTABLE A TRAVERSEE DE CLOISON  
 RACOR A L ORIENTABLE INTERMEDIO PASATABIQUES  
 CONEXÃO PASSA-MURO EM "L" ORIENTÁVEL

Code	Tube	M	L1	L2	D	CH	CH1	CH2	A <sub>max</sub>	Pack.
40060 V0 003	4	M12x1	17,5	26	10	9	14	17	6	10
40060 V0 004	6	M14x1	21,5	31	12,5	11	16	17	6,5	10
40060 V0 005	8	M16x1	22	34	14,5	12	18	19	6,5	10
40060 V0 006	10	M20x1	26,5	36	17,5	14	22	24	7,5	10
40060 V0 007	12	M22x1	30,5	43	21,5	16	24	26	9	10
40060 V0 008	14	M23x1	30,5	43	21,5	16	25	27	9,5	10

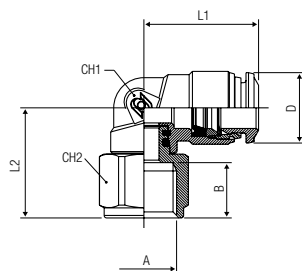


### 40106V

**RACCORDO A L ORIENTABILE FEMMINA**

ORIENTING ELBOW FEMALE ADAPTOR  
 AUFSCRAUB-WINKELSCHRAUBUNG (DREHBAR)  
 RACCORD EQUERRE ORIENTABLE TARAUDE  
 RACOR A L ORIENTABLE HEMBRA  
 CONEXÃO EM "L" ORIENTÁVEL COM ROSCA FÊMEA

Code	Tube	A	B	L1	L2	CH1	CH2	D	Pack.
40106 V0 001	4	1/8	8.5	18	20	9	13	10	10
40106 V0 002	4	1/4	11	18	21.5	9	16	10	10
40106 V0 003	6	1/8	8.5	21	20.5	11	13	12.5	10
40106 V0 004	6	1/4	11	21	23	11	16	12.5	10
40106 V0 005	8	1/8	8.5	22.5	20.5	12	13	14.5	10
40106 V0 006	8	1/4	11	22.5	23	12	16	14.5	10



### 40116V

#### RACCORDO A L ORIENTABILE MASCHIO CILINDRICO

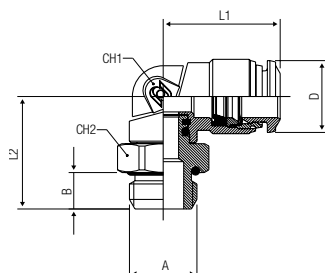
ORIENTING ELBOW MALE ADAPTOR (PARALLEL)

WINKELVERSCHRAUBUNG ZYLINDRISCH (DREHBAR)

EQUERRE ORIENTABLE MÂLE, CYLINDRIQUE

RACOR A L ORIENTABLE MACHO CILÍNDRICO CON TÓRICA

CONEXÃO MACHO EM "L" ORIENTÁVEL COM ROSCA PARALELA



Code	Tube	A	B	L1	L2	CH1	CH2	D	Pack.
40116 V0 003	4	1/8	5.5	18	18	9	13	10	10
40116 V0 004	4	1/4	7	18	18	9	16	10	10
40116 V0 008	6	1/8	5.5	21	20	11	13	12.5	10
40116 V0 009	6	1/4	7	21	21.5	11	16	12.5	10
40116 V0 010	8	1/8	5.5	22.5	21	12	13	14.5	10
40116 V0 011	8	1/4	7	22.5	21.5	12	16	14.5	10
40116 V0 012	8	3/8	8	22.5	23.5	12	20	14.5	10
40116 V0 013	8	1/2	9.5	22.5	25	12	25	14.5	10
40116 V0 014	10	1/4	7	26.5	25.5	14	16	17.5	10
40116 V0 015	10	3/8	8	26.5	25	14	20	17.5	10
40116 V0 016	10	1/2	9.5	26.5	26.5	14	25	17.5	10
40116 V0 025	12	1/4	8	31.5	27.5	16	20	21.5	10
40116 V0 017	12	3/8	8	30.5	28.5	16	20	21.5	10
40116 V0 018	12	1/2	9.5	30.5	30	16	25	21.5	10
40116 V0 019	14	3/8	8	30.5	35.5	19	20	21.5	10
40116 V0 020	14	1/2	9.5	30.5	35.5	19	25	21.5	10

### 40130V

#### RACCORDO A L INTERMEDIO

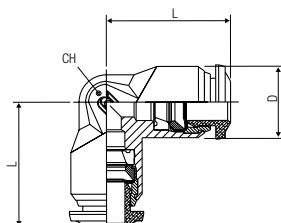
ELBOW CONNECTOR

WINKELVERSCHRAUBUNG

RACCORD EQUERRE

RACOR A L INTERMEDIO

CONEXÃO EM "L" TUBO-TUBO



Code	Tube	L	CH	D	Pack.
40130 V0 001	4 (5/32)	17	9	10	10
40130 V0 002	6	21	11	12.5	10
40130 V0 003	8 (5/16)	22.5	13	14	10
40130 V0 004	10	26.5	16	17	10
40130 V0 005	12	30.5	19	21.5	10
40130 V0 008	14	32.5	19	21.5	10

### 40216V

#### RACCORDO A T ORIENTABILE MASCHIO CILINDRICO

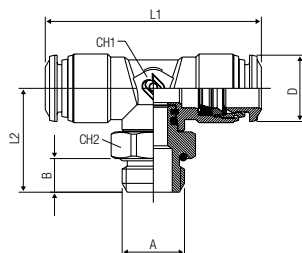
ORIENTING TEE MALE ADAPTOR (PARALLEL) CENTRE LEG

T-EINSCHRAUBVERSCHRAUBUNG ZYLINDRISCH (DREHBAR)

TÉ ORIENTABLE À PIQUAGE MÂLE CENTRAL, CYLINDRIQUE

RACOR A T ORIENTABLE MACHO CENTRAL CILÍNDRICO CON TÓRICA

CONEXÃO MACHO EM "T" ORIENTÁVEL COM ROSCA PARALELA



Code	Tube	A	B	L1	L2	CH1	CH2	D	Pack.
40216 V0 003	4	1/8	5.5	34	18.5	9	13	10	10
40216 V0 004	4	1/4	7	34	20	9	16	10	10
40216 V0 008	6	1/8	5.5	42	20.5	11	13	12.5	10
40216 V0 009	6	1/4	7	42	22	11	16	12.5	10
40216 V0 010	8	1/8	5.5	45	23.5	13	13	14.5	10
40216 V0 011	8	1/4	7	45	24	13	16	14.5	10
40216 V0 012	8	3/8	8	45	26	13	20	14.5	10
40216 V0 013	8	1/2	9.5	45	27.5	13	25	14.5	10
40216 V0 014	10	1/4	7	53	27.5	14	16	17.5	10
40216 V0 015	10	3/8	8	53	27	14	20	17.5	10
40216 V0 016	10	1/2	9.5	53	28.5	14	25	17.5	10
40216 V0 017	12	3/8	8	62.5	29.5	16	20	21.5	10
40216 V0 018	12	1/2	9.5	62.5	31	16	25	21.5	10
40216 V0 019	14	3/8	8	62.5	29.5	16	20	21.5	10
40216 V0 020	14	1/2	9.5	62.5	31	16	25	21.5	10