

**40020V****RACCORDO DIRITTO MASCHIO CILINDRICO**

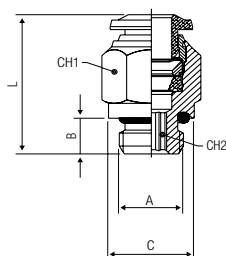
STRAIGHT MALE ADAPTOR (PARALLEL)

GERADE EINSCHRAUBVERSCHRAUBUNG ZYLINDRISCH

RACCORD DROIT MÂLE, CYLINDRIQUE

RACOR RECTO MACHO CILÍNDRICO CON TÓRICA

CONEXÃO RETA COM ROSCA PARALELA



Code	Tube	A	B	C	L	CH1	CH2	Pack.
40020 V0 002	4	1/8	6	13	20	10	3	10
40020 V0 022	4	1/4	8	16	19.5	16	3	10
40020 V0 003	6	1/8	6	13	23.5	13	4	10
40020 V0 004	6	1/4	8	16	23.5	13	4	10
40020 V0 027	6	3/8	9	20	25	13	4	10
40020 V0 028	6	1/2	10	25	27	13	4	10
40020 V0 005	8	1/8	6	13	25	14	5	10
40020 V0 006	8	1/4	8	16	23	14	6	10
40020 V0 007	8	3/8	9	20	24	14	6	10
40020 V0 029	8	1/2	10	25	26.5	14	6	10
40020 V0 008	10	1/4	8	16	30.5	17	6	10
40020 V0 009	10	3/8	9	20	27.5	17	8	10
40020 V0 031	10	1/2	10	25	27	17	8	10
40020 V0 032	12	1/4	8	16	34.5	20	6	10
40020 V0 011	12	3/8	9	20	34	20	8	10
40020 V0 023	12	1/2	10	25	31	22	10	10
40020 V0 024	14	3/8	9	20	35	21	10	10
40020 V0 025	14	1/2	10	25	32	22	11	10

**40030V****RACCORDO DIRITTO FEMMINA**

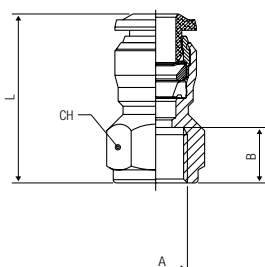
STRAIGHT FEMALE ADAPTOR

AUF SCHRAUBVERSCHRAUBUNG

RACCORD DROIT, TARAUEE

RACOR RECTO HEMBRA

CONEXÃO RETA COM ROSCA FÊMEA



Code	Tube	A	B	L	CH	Pack.
40030 V0 001	4	1/8	8.5	24	13	10
40030 V0 009	4	1/4	11	27.5	16	10
40030 V0 002	6	1/8	8.5	26	13	10
40030 V0 007	6	1/4	11	29.5	16	10
40030 V0 004	8	1/8	8.5	27	15	10
40030 V0 005	8	1/4	11	29.5	17	10
40030 V0 010	8	3/8	12	32	19	10
40030 V0 011	10	1/4	11	32	18	10
40030 V0 012	10	3/8	12	33.5	19	10
40030 V0 013	10	1/2	15	39	24	10
40030 V0 014	12	3/8	12	36	21	10
40030 V0 015	12	1/2	15	41	24	10

**40040V****RACCORDO DIRITTO INTERMEDIO**

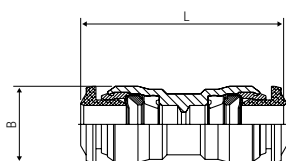
STRAIGHT CONNECTOR

VERBINDUNGSVERSCHRAUBUNG

RACCORD UNION DOUBLE

RACOR RECTO INTERMEDIO

CONEXÃO RETA TUBO-TUBO



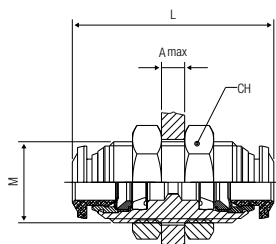
Code	Tube	Tube	L	B	Pack.
40040 V0 001	4 (5/32)		30.5	10.5	10
40040 V0 002	6	4	32	12.5	10
40040 V0 003	6		34	12.5	10
40040 V0 004	8	6	35	14.5	10
40040 V0 005	8 (5/16)		36	14.5	10
40040 V0 011	10	8	40.5	17.5	10
40040 V0 006	10		42	17.5	10
40040 V0 012	12	10	45.5	20.5	10
40040 V0 007	12		47	20.5	10
40040 V0 010	14		49	21.5	10

### 40050V

**RACCORDO DIRITTO INTERMEDIO DI ATTRAVERSAMENTO**

BULKHEAD CONNECTOR  
 SCHOTTVERSCHRAUBUNG  
 RACCORD TRAVERSÉE DE CLOISON  
 RACOR RECTO INTERMEDIO PASATABIQUES  
 CONEXÃO PASSA-MURO RETA TUBO-TUBO

Code	Tube	M	L	CH	Amax	Pack.
40050 V0 001	4 (5/32)	M12x1	31.5	17	7	10
40050 V0 002	6	M14x1	35	17	9.5	10
40050 V0 003	8 (5/16)	M16x1	37	19	10.5	10
40050 V0 004	10	M20x1	43	24	12.5	10
40050 V0 005	12	M22x1	48	26	16.5	10

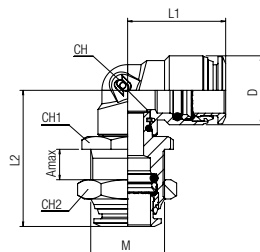


### 40060V

**RACCORDO A L ORIENTABILE INTERMEDIO DI ATTRAVERSAMENTO**

BULKHEAD ORIENTING ELBOW  
 WINKEL-SCHOTTVERSCHRAUBUNG (DREHBAR)  
 RACCORD EQUERRE ORIENTABLE A TRAVERSEE DE CLOISON  
 RACOR A L ORIENTABLE INTERMEDIO PASATABIQUES  
 CONEXÃO PASSA-MURO EM "L" ORIENTÁVEL

Code	Tube	M	L1	L2	D	CH	CH1	CH2	Amax	Pack.
40060 V0 003	4	M12x1	17,5	26	10	9	14	17	6	10
40060 V0 004	6	M14x1	21,5	31	12,5	11	16	17	6,5	10
40060 V0 005	8	M16x1	22	34	14,5	12	18	19	6,5	10
40060 V0 006	10	M20x1	26,5	36	17,5	14	22	24	7,5	10
40060 V0 007	12	M22x1	30,5	43	21,5	16	24	26	9	10
40060 V0 008	14	M23x1	30,5	43	21,5	16	25	27	9,5	10



### 40106V

**RACCORDO A L ORIENTABILE FEMMINA**

ORIENTING ELBOW FEMALE ADAPTOR  
 AUFSCRAUB-WINKELSCHRAUBUNG (DREHBAR)  
 RACCORD EQUERRE ORIENTABLE TARAUDE  
 RACOR A L ORIENTABLE HEMBRA  
 CONEXÃO EM "L" ORIENTÁVEL COM ROSCA FÊMEA

Code	Tube	A	B	L1	L2	CH1	CH2	D	Pack.
40106 V0 001	4	1/8	8.5	18	20	9	13	10	10
40106 V0 002	4	1/4	11	18	21.5	9	16	10	10
40106 V0 003	6	1/8	8.5	21	20.5	11	13	12.5	10
40106 V0 004	6	1/4	11	21	23	11	16	12.5	10
40106 V0 005	8	1/8	8.5	22.5	20.5	12	13	14.5	10
40106 V0 006	8	1/4	11	22.5	23	12	16	14.5	10

