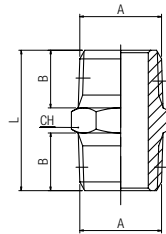


62000

NIPPLO CONICO

NIPPLE (TAPER)
DOPPELNIPPEL KONISCH
MAMELON DOUBLE, CONIQUE
MACHÓN CÓNICO
NIPLE COM ROSCA CÔNICA

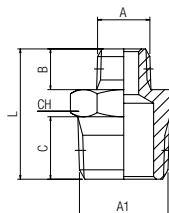


Code	A	B	L	CH	Pack.
62000 00 44 02 00	1/8	7.5	19.5	11	10
62000 00 44 03 00	1/4	11	27	14	10
62000 00 44 04 00	3/8	11.5	28	17	10
62000 00 44 05 00	1/2	14	33.5	22	10
62000 00 44 07 00	3/4	16.5	40	27	10

62020

NIPPLO DI RIDUZIONE CONICO

REDUCING NIPPLE (TAPER)
DOPPELNIPPEL KONISCH REDUZIERT
MAMELON DOUBLE INÉGAL, CONIQUE
MACHÓN CÓNICO DE REDUCCIÓN
NIPLE DE REDUÇÃO COM ROSCA CÔNICA

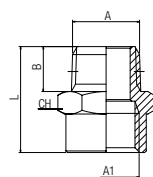


Code	A	A1	B	C	L	CH	Pack.
62020 00 44 AT 00	1/8	1/4	7.5	11	23.5	14	10
62020 00 44 3W 00	1/8	3/8	7.5	11.5	24	17	10
62020 00 44 7W 00	1/4	3/8	11	11.5	27.5	17	10
62020 00 44 8W 00	1/4	1/2	11	14	30.5	22	10
62020 00 44 AC 00	3/8	1/2	11.5	14	31	22	10
62020 00 44 AH 00	1/2	3/4	14	16.5	37.5	27	10

62040

RIDUZIONE CONICA

REDUCER (TAPER)
REDUZIERUNG KONISCH
GROSSISSEUR MÂLE CONIQUE / FEMELLE CYLINDRIQUE
REDUCCIÓN CÓNICA MACHO - HEMBRA
REDUÇÃO COM ROSCA CÔNICA

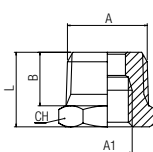


Code	A	A1	B	L	CH	Pack.
62040 00 44 AT 00	1/8	1/4	7.5	22	17	10
62040 00 44 7W 00	1/4	3/8	11	27	22	10
62040 00 44 8W 00	1/4	1/2	11	30	24	10
62040 00 44 AC 00	3/8	1/2	11.5	30.5	24	10
62040 00 44 AH 00	1/2	3/4	14	35	32	10

62080

RIDUZIONE CONICA

REDUCER (TAPER)
REDUZIERUNG KONISCH
RÉDUCTION MÂLE CONIQUE / FEMELLE CYLINDRIQUE
REDUCCIÓN CÓNICA
REDUÇÃO COM ROSCA CÔNICA



Code	A	A1	B	L	CH	Pack.
62080 00 44 5W 00	1/4	1/8	11	16	14	10
62080 00 44 9W 00	3/8	1/8	11.5	16.5	17	10
62080 00 44 AA 00	3/8	1/4	11.5	16.5	17	10
62080 00 44 AE 00	1/2	1/4	14	19.5	22	10
62080 00 44 AF 00	1/2	3/8	14	19.5	22	10
62080 00 44 AM 00	3/4	1/2	16.5	23.5	27	10