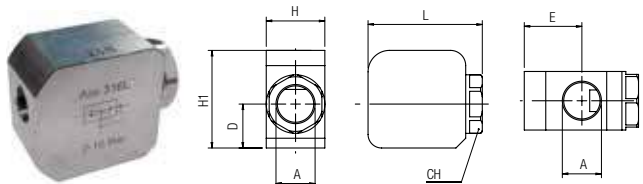
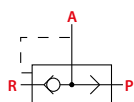


**66050**

**VALVOLA A SCARICO RAPIDO**

QUICK EXHAUST VALVE  
SCHNELLENTLÜFTUNGSVENTILE  
VANNE À PURGE RAPIDE  
VÁLVULA DE ESCAPE RÁPIDO  
VÁLVULA ESCAPE RÁPIDO



Code	A	H	L	H1	E	D	CH	DN	Pack.
66050 00 001	1/8	20	40	33	23,5	13,5	18	8	2
66050 00 002	1/4	20	40	33	23	13,5	18	8	2
66050 PL 003	3/8	24	50	43	24	20	21	10	2
66050 PL 004	1/2	30	58,5	50	29,5	22,5	27	12	2

Valori di portata con aria - Values of flow with air - Luftdurchflusswerte - Valeurs indiquées pour air comprimé - Valores de caudal con aire - Valores de vazão com ar

Pressioni Pressures Druck Pressions Presiones Pressões	DN	Portata Flow rate Durchfluss Débit Caudal Vazão	Portata Flow rate Durchfluss Débit Caudal Vazão
bar		NI/min	NI/min
		<b>P-A</b>	<b>A-R</b>
<b>6</b>	<b>8</b>	<b>1580</b>	<b>1880</b>
<b>6</b>	<b>8</b>	<b>1650</b>	<b>1900</b>
<b>6</b>	<b>10</b>	<b>2350</b>	<b>2880</b>
<b>6</b>	<b>12</b>	<b>4580</b>	<b>6400</b>



**Pressioni**

Pressures  
Druckbereich  
Pressions  
Presiones  
Pressões

**2 bar** (0.2 MPa)

**10 bar** (1 MPa)



**Temperature**

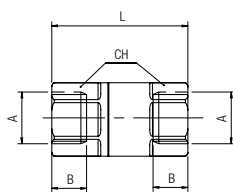
Temperatures  
Temperatur  
Températures  
Temperaturas  
Temperaturas

- **Tampone in FKM** **1/8 - 1/4** **- 10 °C**  
Pad in FKM  
Membrane FKM  
Clapet FKM  
Membrana en FKM  
Tampão em FKM
- **Tampone in PU** **3/8 - 1/2** **- 20 °C**  
Pad in PU  
Membrane PU  
Clapet PU  
Membrana en PU  
Tampão em PU

**66062**

**VALVOLA UNIDIREZIONALE FEMMINA-FEMMINA**

FEMALE-FEMALE NON RETURN VALVE  
RÜCKSCHLAGVENTIL INNEN- / INNENGEWINDE  
VANNE ANTI-RETOUR, FEMELLE/FEMELLE  
VÁLVULA UNIDIRECCIONAL HEMBRA-HEMBRA  
VÁLVULA UNIDIRECCIONAL FÊMEA-FÊMEA



Code	A	B	L	CH	Pack.
66062 00 001	1/8	9	38	16	2
66062 00 002	1/4	10,5	38	16	2
66062 00 003	3/8	13	44	19	2
66062 00 004	1/2	15	50	24	2

Con Guarnizioni FKM  
With FKM Seals  
Dichtungen aus FKM  
Joints en FKM  
Con juntas FKM  
Com Vedação em FKM



**Pressioni**

Pressures  
Druckbereich  
Pressions  
Presiones  
Pressões

**0.3 bar** (0.03 MPa) \*

**25 bar** (2.5 MPa)

\* Pressione indicativa apertura  
Approximate opening pressure  
Öffnungsdruck  
Pression d'ouverture  
Presión indicativa de apertura  
Pressão indicativa de abertura



**Temperature**

Temperatures  
Temperatur  
Températures  
Temperaturas  
Temperaturas

**- 10 °C**

**+ 120 °C**