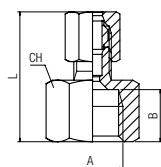


13500**RACCORDO DIRITTO FEMMINA**

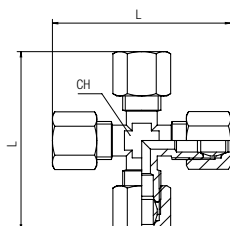
STRAIGHT FEMALE ADAPTOR
 AUFSCHRAUBVERSCHRAUBUNG
 RACCORD DROIT TARAUEE
 RACOR RECTO HEMBRA
 CONEXÃO RETA COM ROSCA FÊMEA



Code	Tube	A	L	CH	Pack.
13500 00 001	4	1/8	25	14	10
13500 00 002	4	1/4	27.5	17	10
13500 00 003	6	1/8	26	14	10
13500 00 004	6	1/4	28.5	17	10
13500 00 005	8	1/8	28	14	10
13500 00 006	8	1/4	30.5	17	10
13500 00 007	8	3/8	31.5	20	10
13500 00 008	10	1/4	33	17	10
13500 00 009	10	3/8	33.5	20	10
13500 00 010	10	1/2	35.5	24	10
13500 00 011	12	1/4	34	18	10
13500 00 012	12	3/8	34.5	20	10
13500 00 013	12	1/2	34	24	10
13500 00 014	14	3/8	36.5	20	10
13500 00 015	14	1/2	34	24	10
13500 00 016	15	1/2	36.5	24	10
13500 00 017	16	1/2	39	24	10
13500 00 018	16	3/4	40.5	30	10
13500 00 019	18	1/2	40	24	10
13500 00 020	18	3/4	41.5	30	10
13500 00 021	22	3/4	41.5	30	10

13510**RACCORDO A CROCE**

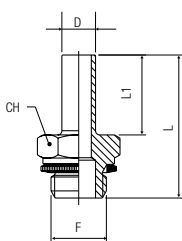
EQUAL CROSS
 KREUZVERSCHRAUBUNG
 RACCORD EN CROIX
 RACOR A CRUZ
 CONEXÃO TIPO CRUZETA TUBO-TUBO



Code	Tube	L	CH	Pack.
13510 00 001	4	47	8	10
13510 00 002	6	48	9	10
13510 00 003	8	58	11	10
13510 00 004	10	66	13	10
13510 00 005	12	74.5	17	10
13510 00 006	14	74.5	17	10

13530**ADATTATORE ORIENTABILE MASCHIO CILINDRICO**

ORIENTING MALE ADAPTOR PARALLEL
 EINSCHRAUBSTECKVERSCHRAUBUNG ZYLINDRISCH
 ADAPTATEUR D'ORIENTATION CYLINDRIQUE
 ADAPTADOR ORIENTABLE MACHO CILÍNDRICO
 ADAPTADOR ORIENTÁVEL COM ROSCA MACHO PARALELA



Code	D	F	L	L1	CH	Pack.
13530 00 001	6	1/8	27.5	16	13	10
13530 00 002	6	1/4	31	16	17	10
13530 00 003	8	1/8	31.5	19	13	10
13530 00 004	8	1/4	34	19	17	10
13530 00 005	8	3/8	38	19	22	10
13530 00 006	10	1/4	35	20	17	10
13530 00 007	10	3/8	39	20	22	10
13530 00 008	14	3/8	40	21	22	10
13530 00 009	14	1/2	42	21	27	10



Temperature

min

- 20 °C

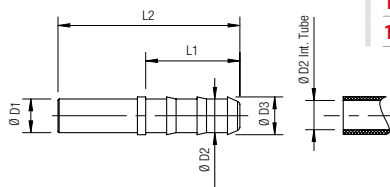
max

+ 80 °C

13540

MANICOTTO PORTAGOMMA PER TUBO CAUCCIÙ

SLEEVE HOSE ADAPTER FOR CAOUTCHOUC TUBES
 SCHLAUCHTÜLLE FÜR GUMMISCHLAUCH
 DOUILLE ANNELÉE POUR TUBE CAOUTCHOUC
 MANGUITO PORTAGOMA PARA TUBO DE CAUCHO
 ESPIGÃO PARA ENGATE DE MANGUEIRAS

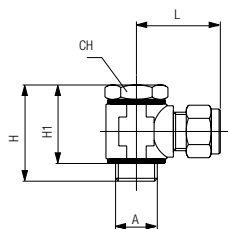


Code	D1	D2	D3	L1	L	Pack.
13540 00 01 GG 00	6	7	9	22.5	40.5	10
13540 00 01 GH 00	8	7	9	22.5	43.5	10
13540 00 01 GP 00	8	10	12	22.5	43.5	10
13540 00 01 GI 00	10	7	9	22.5	44.5	10
13540 00 01 FR 00	10	10	12	22.5	44.5	10
13540 00 01 FS 00	12	10	12	22.5	45	10
13540 00 01 GM 00	12	13	15.5	29.5	52	10
13540 00 01 GN 00	14	13	15.5	29.5	52.5	10

13550

RACCORDO ORIENTABILE A L CON VITE

SINGLE BANJO BODY WITH STEM
 WINKELSCHWENKVERSCHRAUBUNG (DREHBAR)
 EQUERRE MÂLE BANJO, ORIENTABLE
 RACOR ORIENTABLE A L CON TORNILLO
 CONEXÃO EM "L" ORIENTÁVEL TIPO BANJO



Code	Tube	A	L	L2	L1	CH	Pack.
13550 00 001	4	1/8	22.5	31	24.5	14	10
13550 00 002	6	1/8	23.5	31	24.5	14	10
13550 00 003	6	1/4	26.5	32	25	17	10
13550 00 004	8	1/8	28.5	31	24.5	14	10
13550 00 005	8	1/4	28.5	32	25	17	10
13550 00 006	8	3/8	30	36	27.5	19	10
13550 00 007	10	1/4	32.5	32	25	17	10
13550 00 008	10	3/8	32.5	36	27.5	19	10
13550 00 009	14	1/4	37	44	38	17	10
13550 00 010	14	3/8	37	46	38	22	10
13550 00 011	14	1/2	37	49	39.5	24	10
13550 00 012	22	3/4	47	64	55	32	10

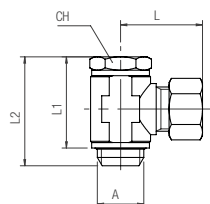
	min	max
Temperature	- 20 °C	+ 80 °C

13550BI

New

RACCORDO ORIENTABILE A L CON VITE E RONDELLE BIMATERIALE (1613)

SINGLE BANJO BODY WITH STEM AND BIMATERIAL WASHER (1613)
 WINKELSCHWENKVERSCHRAUBUNG MIT BIMATERIAL UNTERLAGSSCHEIBE (1613)
 RACCORD BANJO MALE CYLINDRIQUE AVEC JOINT BI-MATIÈRE (1613)
 RACOR ORIENTABLE A L CON TORNILLO Y ARANDELA BIMATERIAL (1613)
 CONEXÃO EM "L" ORIENTÁVEL COM PARAFUSOS E ARRUELA BI-MATERIAL (1613)



Code	Tube	A	L	L2	L1	CH1	Pack.
13550 BI 001	4	1/8	22.5	31	25	14	10
13550 BI 002	6	1/8	23.5	31	25	14	10
13550 BI 003	6	1/4	26.5	32	25.5	17	10
13550 BI 004	8	1/8	28.5	31	25	14	10
13550 BI 005	8	1/4	28.5	32	26.5	17	10
13550 BI 006	8	3/8	30	36	28.5	19	10
13550 BI 007	10	1/4	32.5	32	25.5	17	10
13550 BI 008	10	3/8	32.5	36	28.5	19	10
13550 BI 027	12	1/4	37	44	38.5	17	10
13550 BI 028	12	3/8	37	46	39	19	10
13550 BI 009	14	1/4	37	44	38.5	17	10
13550 BI 010	14	3/8	37	46	39	22	10
13550 BI 011	14	1/2	37	49	41	24	10
13550 BI 029	15	3/8	37	46	39	22	10
13550 BI 030	15	1/2	37	49	41	24	10
13550 BI 031	16	1/2	39	49	41	24	10
13550 BI 032	18	1/2	45.5	49	41	24	10
13550 BI 012	22	3/4	47	64	55	32	10

	min	max
Temperature	- 30 °C	+ 100 °C

13570BI**New****RACCORDO ORIENTABILE A T CON VITE E RONDELLE BIMATERIALE (1613)**

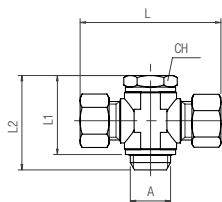
DOUBLE BANJO BODY WITH STEM AND BIMATERIAL WASHER (1613)

DOPPELSCHWENKVERSCHRAUBUNG MIT BIMATERIAL UNTERLAGSSCHEIBE (1613)

RACCORD BANJO DOUBLE MALE CYLINDRIQUE AVEC JOINT BI-MATIÈRE (1613)

RACOR ORIENTABLE A T CON TORNILLO Y ARANDELA BIMATERIALE (1613)

CONEXÃO EM "T" ORIENTÁVEL COM PARAFUSOS E ARRUELA BI-MATEIRAL (1613)



Code	Tube	A	L	L2	L1	CH1	Pack.
13570 BI 001	4	1/8	22,5	45	25	14	10
13570 BI 002	6	1/8	23,5	47	25	14	10
13570 BI 003	6	1/4	26,5	53	25,5	17	10
13570 BI 004	8	1/8	28,5	57	25	14	10
13570 BI 005	8	1/4	28,5	57	26,5	17	10
13570 BI 006	8	3/8	30	60	28,5	19	10
13570 BI 007	10	1/4	32,5	63	25,5	17	10
13570 BI 008	10	3/8	32,5	65	28,5	19	10
13570 BI 027	12	1/4	37	73	38,5	17	10
13570 BI 028	12	3/8	37	73	39	19	10
13570 BI 009	14	1/4	37	73	38,5	17	10
13570 BI 010	14	3/8	37	73	39	22	10
13570 BI 011	14	1/2	37	73	41	24	10
13570 BI 029	15	3/8	37	73	39	22	10
13570 BI 030	15	1/2	37	73	41	24	10
13570 BI 031	16	1/2	39	91	41	24	10
13570 BI 032	18	1/2	45,5	91	41	24	10
13570 BI 012	22	3/4	47	93	55	32	10

min max



Temperature

- 30 °C

+ 100 °C

13958BI**New****REGOLATORE UNIDIREZIONALE ORIENTABILE PER CILINDRO**

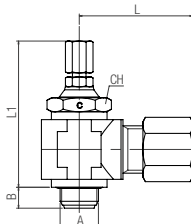
ORIENTING FLOW REGULATOR FOR CYLINDER

DURCHFLOSSREGLER ABLUFTDROSSELUNG (DREHBAR)

RÉGULATEUR DE DÉBIT À L'ÉCHAPPEMENT FILETAGE (ORIENTABLE)

REGULADOR UNIDIRECCIONAL ORIENTABLE PARA CILINDRO

REGULADORA UNIDIRECCIONAL ORIENTÁVEL PARA CILINDRO



Code	Tube	A	L	L1min	L1max	B	CH1	Pack.
13958 BI 001	8	1/8	28,5	36,5	42	4,5	14	10
13958 BI 002	10	1/4	32,5	40	45,5	6,5	17	10
13958 BI 003	14	3/8	36,5	50	57	6,5	20	10
13958 BI 004	18	1/2	46	54,5	62	7,5	24	10

Regolatore (8905) + Rondelle bimateriale (1613).

Regulator (8905) + Bimaterial washer (1613).

Regler (8905) + Bimaterial unterlagsscheibe (1613).

Régulateur (8905) + Joint bi matière (1613).

Regulador (8905) + Arandela bimateriale (1613).

Reguladora (8905) + Arruela bi-material (1613).

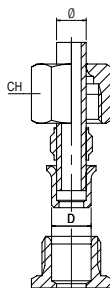
min max



Temperature

- 20 °C

+ 80 °C

Regolazione manuale - Manual regulation - Einstellbar von hand
À vis extérieur - regulación manual - regulagem manual**13600****RIDUZIONE**REDUCTION
REDUZIERUNG
RÉDUCTION
REDUCCIÓN
REDUÇÃO

Code	Tube	D	CH	Pack.
13600 00 001	4	6	13	10
13600 00 002	6	8	14	10
13600 00 003	8	10	19	10
13600 00 004	10	12	22	10
13600 00 005	12	14	24	10

Questo articolo è comprensivo di tre particolari quali: Dado, Ogiva, Riduzione.

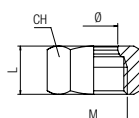
This article is comprehensive of 3 parts: Nut, Olive, Reduction.

Dieser Artikel enthält drei wie insbesondere: Mutter, Spinner, Verringerung.

Cet article comprend trois des détails tels que: Écrous, Spinner, Réduction.

Este artículo incluye tres partes: Tuerca, Ojiva, Reducción.

Este artigo inclui três especial, tais como: Nut, Girador, Redução.

13680**DADO**NUT
ÜBERWURFMUTTER
ECROU
TUERCA
PORCA

Code	Tube	L	CH	M	Pack.
13680 00 01 X1 00	4	10,5	10	M 8x1	50
13680 00 01 X4 00	6	10,5	13	M 10x1	50
13680 00 01 X7 00	8	12,5	14	M 12x1	50
13680 00 01 X9 00	10	15	19	M 16x1.5	50
13680 00 01 Y1 00	12	15	22	M 18x1.5	50
13680 00 01 Y3 00	14	15	24	M 20x1.5	20
13680 00 01 Y4 00	15	15	24	M 20x1.5	20
13680 00 01 Y5 00	16	17	27	M 22x1.5	20
13680 00 01 Y7 00	18	18	30	M 24x1.5	20
13680 00 01 J1 00	22	19	36	M 30x1.5	10