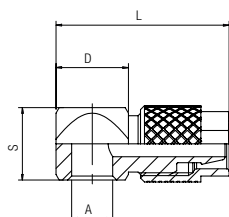


LG 500

ANELLO ORIENTABILE SERIE LEGGERA

SINGLE BANJO BODY LIGHT
RINGANSCHLUSS LEICHTE SERIE
CORPS SIMPLE POUR BANJO - SÉRIE LÉGÈRE
ANILLO ORIENTABLE SIMPLE SERIE LIGERA
ANEL ORIENTÁVEL SÉRIE LEVE

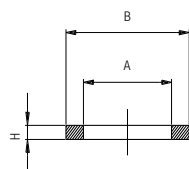


Code	Tube	A	D	S	L	Pack.
LG500 00 003	4/2.7	M5	9	9	17	10
LG500 00 005	4/2.7	M6	9	9	17	10
LG500 00 004	5/3	M5	9	9	17	10
LG500 00 002	6/4	M5	9	9	16.5	10
LG500 00 006	6/4	M6	9	9	16.5	10

1600

RONDELLA IN ALLUMINIO

ALUMINIUM WASHER
DICHTSCHEIBE AUS ALUMINIUM
JOINT EN ALUMINIUM
ARANDELA EN ALUMINIO
ARRUELA DE ALUMÍNIO

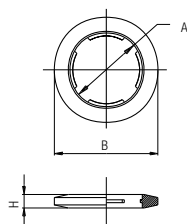


Code	Size	A	B	H	Pack.
01600 00 11 B5 00	M5	5.2	8	1	20
01600 00 11 02 00	1/8	10	14	1.5	20
01600 00 11 03 00	1/4	13.5	18	1.5	20
01600 00 11 04 00	3/8	16.8	21	1.5	20
01600 00 11 05 00	1/2	21.1	26	1.5	20
01600 00 11 D7 00	M12	12.5	18	1.5	20

1610

RONDELLA DENTELLATA IN PA66

PA66 NOTCHED-WASHER
UNVERLIERBARE DICHTSCHEIBE AUS PA66
JOINT IMPERDABLE EN PA66
ARANDELA DENTADA EN NYLON PA66
ARRUELA DENTADA DE PA66



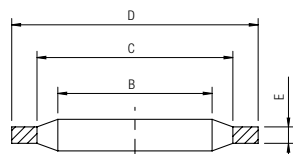
Code	Size	A	B	H	Pack.
01610 00 25 A7 00	M3	2.5	5.5	0.5	20
01610 00 25 B5 00	M5	5.2	8	1	20
01610 00 25 B8 00	M6	6.1	9	1.3	20
01610 00 25 02 00	1/8	10	14	1.5	20
01610 00 25 03 00	1/4	13.5	18	1.5	20
01610 00 25 04 00	3/8	16.8	21	1.5	20
01610 00 25 05 00	1/2	21.1	26	2	20
01610 00 25 07 00	3/4	27	32	2.5	20
01610 00 25 09 00	1"	34	41	2.5	20

	min	max
Temperature	- 20 °C	+ 90 °C

1612

RONDELLA AUTOCENTRANTE BIMATERIALE IN ACCIAIO E NBR

STEEL AND NBR CENTERING BIMATERIAL WASHER
BI-MATERIAL STAHL SCHEIBE UND NBR
JOINT BI-MATIÈRE - ACIER/NBR
ARANDELA BIMATERIAL EN ACERO Y NBR
ARRUELA BI-MATERIAL EM AÇO E NBR



Code	Size	B	C	D	E	Pack.
01612 00 001	1/8	10.4	12	14.7	1.25	20
01612 00 002	1/4	13.85	15.75	18.7	1.25	20
01612 00 003	3/8	17.35	19.25	22.7	1.25	20
01612 00 004	1/2	21.65	23.55	26.7	1.25	20
01612 00 005	3/4	27.3	29.2	32.5	1.25	20
01612 00 006	1"	34.2	36.1	39.5	2	20

	min	max
Temperature	- 30 °C	+ 100 °C

1613

RONDELLA AUTOCENTRANTE BIMATERIALE IN ACCIAIO E NBR

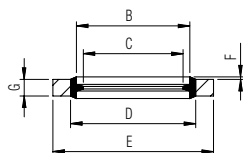
STEEL AND NBR CENTERING BIMATERIAL WASHER

BI-MATERIAL STAHL SCHEIBE UND NBR

JOINT BI-MATIÈRE - ACIER/NBR

ARANDELA BIMATERIAL EN ACERO Y NBR

ARRUELA BI-MATERIAL EM AÇO E NBR



Code	Size	B	C	D	E	G	F	Pack.
01613 00 001	1/8	10,4	8,6	11,85	14	2	0,3	20
01613 00 002	1/4	13,75	11,45	15,2	17	2	0,3	20
01613 00 003	3/8	17,3	15	18,75	22	2	0,3	20
01613 00 004	1/2	21,55	18,65	23	26	2,5	0,4	20
01613 00 005	3/4	27,05	24,15	28,5	32	2,5	0,4	20
01613 00 006	1"	33,9	30,30	36,9	41	3,2	0,5	20



Temperature

min

- 40 °C

max

+ 100 °C

1700

DADO DI BLOCCAGGIO

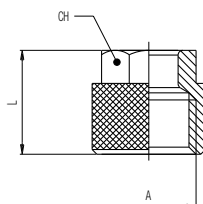
LOCKING NUT

ÜBERWURFMUTTER

ÉCROU

TUERCA DE BLOCAJE

PORCA DE TRAVAMENTO



Code	Tube	A	L	CH	Pack.
01700 00 01 3Z NB	4/2.7	M6x0.5	9	7	50
01700 00 01 6Z NB	5/3	M7x0.75	11	8	50
01700 00 01 9Z NB	6/4	M8x0.75	11	8	50
01700 00 01 0X NB	6/4	M10x1	11	10	50
01700 00 01 4X NB	8/6	M12x1	11.5	12	50
01700 00 01 5X NB	10/8	M14x1	13.5	14	50
01700 00 01 6X NB	12/10	M16x1	15	15	50
01700 00 01 7X NB	15/12.5	M20x1	16	19	50

1710

DADO DI BLOCCAGGIO CON MOLLA

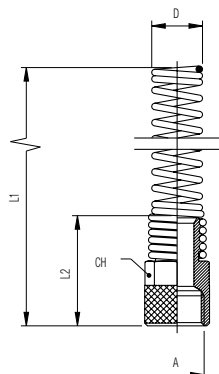
LOCKING NUT WITH SPRING

ÜBERWURFMUTTER MIT KNICKSCHUTZFEDER

ÉCROU AVEC RESSORT DE PROTECTION

TUERCA DE BLOCAJE CON MUELLE

PORCA DE TRAVAMENTO COM MOLA



Code	Tube	A	D	L1	L2	CH	Pack.
01710 00 001	6/4	M10x1	9.4	93	20	11	20
01710 00 002	8/6	M12x1	11.4	98.5	21	13	20
01710 00 003	10/8	M14x1	13.4	107	24	14	20
01710 00 004	12/10	M16x1	16	116.5	27.5	17	20