

**1230****RACCORDO A T INTERMEDIO**

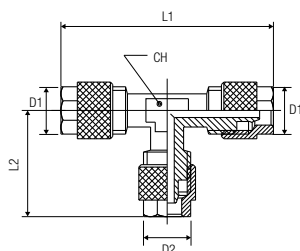
TEE CONNECTOR

T-ANSCHLUSS

RACCORD TÉ

RACOR A T INTERMEDIO

CONEXÃO EM "T" TUBO-TUBO



Code	D1	D2	L1	L2	CH	Pack.
01230 00 001	4/2.7		40	20.5	8	10
01230 00 002	5/3		41.2	20.6	8	10
01230 00 003	6/4		41.2	20.6	8	10
01230 00 004	8/6	6/4	43.8	20.6	9	10
01230 00 005	8/6		43.8	21.9	9	10
01230 00 006	10/8	6/4	51	20.6	11	10
01230 00 007	10/8	8/6	51	21.9	11	10
01230 00 008	10/8		51	25.5	11	10
01230 00 009	12/10		54	28	13	10
01230 00 010	15/12.5		63	32.5	16	10

**1300****RACCORDO A CROCE INTERMEDIO**

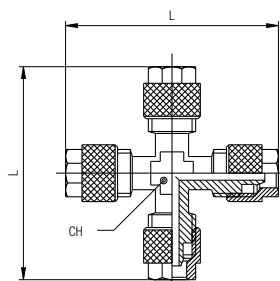
EQUAL CROSS CONNECTOR

KREUZ-ANSCHLUSS

CROIX ÉGALE

RACOR A CRUZ INTERMEDIO

CONEXÃO CRUZETA TUBO-TUBO



Code	Tube	L	CH	Pack.
01300 00 001	5/3	41.6	8	10
01300 00 002	6/4	41.6	8	10
01300 00 003	8/6	44.4	9	10
01300 00 004	10/8	49	11	10
01300 00 005	12/10	58	13	10
01300 00 006	15/12.5	64	17	10

**51410****VITE CAVA SINGOLA**

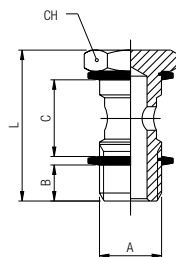
BANJO STEM SINGLE

EINFACHE HOHLSCHRAUBE

VIS POUR BANJO SIMPLE

TORNILLO SIMPLE

HASTE PARA CONEXÃO BANJO COM 1 CAVIDADE



Code	A	B	C	L	CH	Pack.
51410 00 011	M5	4	12.5	22	8	10
51410 00 012	M6	5	12.5	23	8	10
51410 00 013	1/8	6	15	28	14	10
51410 00 014	1/4	8	17	32	17	10
51410 00 015	3/8	9	20	36	19	10
51410 00 016	1/2	10	24	42	24	10
51410 00 017	*M12x1.5	8	17	32	17	10

Questo articolo viene fornito completo di rondelle in PA66 (art. 1610).

This item will be supplied with the PA66 washers (art. 1610).

Dieser artikel wird mit dichtringen aus PA66 (art. 1610) Mitgeliefert.

Livré avec joints en PA66 (art. 1610).

Este artículo viene completo de arandelas en nylon (art.1610).

Este item vem acompanhado de arruelas em PA66 (cód. 1610).

\* Con questa vite utilizzare gli anelli orientabili da 1/4.

\* With this banjo stem using 1/4 orienting banjo body.

\* Bei dieser grösse können dichtringe für 1/4 eingesetzt werden.

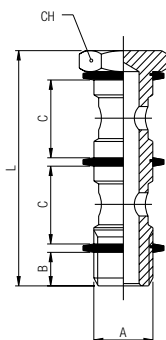
\* Compatible avec joint 1/4".

\* Con este tornillo utilizar el anillo orientable de 1/4.

\* Com esta haste para banjo utilizar os anéis orientáveis de 1/4.

**51420****VITE CAVA DOPPIA**

BANJO STEM DOUBLE  
DOPPELTE HOHLSCHRAUBE  
VIS POUR BANJO DOUBLE  
TORNILLO DOBLE  
HASTE PARA CONEXÃO BANJO COM 2 CAVIDADES



Code	A	B	C	L	CH	Pack.
51420 00 011	1/8	6	15	44.5	14	10
51420 00 012	1/4	8	17	50.5	17	10
51420 00 013	3/8	9	20	58	19	10
51420 00 014	1/2	10	24	68	24	10
51420 00 015	*M12x1.5	8	17	50.5	17	10

Questo articolo viene fornito completo di rondelle in PA66 (art. 1610).

This item will be supplied with the PA66 washers (art. 1610).

Dieser artikel wird mit dichtringen aus PA66 (art. 1610) Mitgeliefert.

Livré avec joints en PA66 (art. 1610).

Este artículo viene completo de arandelas en nylon (art.1610).

Este item vem acompanhado de arruelas em PA66 (cód. 1610).

\* Con questa vite utilizzare gli anelli orientabili da 1/4.

\* With this banjo stem using 1/4 orienting banjo body.

\* Bei dieser größe können dichtringe für 1/4 eingesetzt werden.

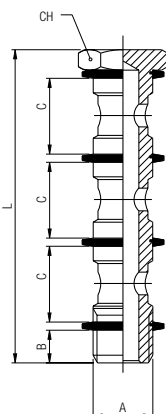
\* Compatible avec joint 1/4".

\* Con este tornillo utilizar el anillo orientable de 1/4.

\* Com esta haste para banjo utilizar os anéis orientáveis de 1/4.

**51430****VITE CAVA TRIPLA**

BANJO STEM TRIPLE  
DREIFACH HOHLSCHRAUBE  
VIS POUR BANJO TRIPLE  
TORNILLO TRIPLE  
HASTE PARA CONEXÃO BANJO COM 3 CAVIDADES



Code	A	B	C	L	CH	Pack.
51430 00 011	1/8	6	15	61	14	10
51430 00 012	1/4	8	17	69	17	10
51430 00 013	3/8	9	20	80	19	10
51430 00 014	1/2	10	24	94	24	10

Questo articolo viene fornito completo di rondelle in PA66 (art. 1610).

This item will be supplied with the PA66 washers (art. 1610).

Dieser artikel wird mit dichtringen aus PA66 (art. 1610) Mitgeliefert.

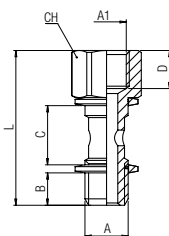
Livré avec joints en PA66 (art. 1610).

Este artículo viene completo de arandelas en nylon (art.1610).

Este item vem acompanhado de arruelas em PA66 (cód. 1610).

**51440****VITE CAVA SINGOLA MASCHIO - FEMMINA**

MALE - FEMALE BANJO STEM SINGLE  
AUFSCHRAUBHOHLSCHRAUBE MIT INNENGEWINDE  
VIS CREUSE TARAUDÉE POUR BANJO SIMPLE  
TORNILLO SIMPLE MACHO - HEMBRA  
HASTE PARA CONEXÃO BANJO COM 1 CAVIDADE MACHO - FÊMEA



Code	A	A1	B	C	D	L	CH	Pack.
51440 00 001	1/8	1/8	6	15	8.5	34.5	14	10
51440 00 002	1/4	1/4	8	17	11	40.5	17	10
51440 00 003	3/8	3/8	9	20	12	45.5	19	10

Questo articolo viene fornito completo di rondelle in PA66 (art. 1610).

This item will be supplied with the PA66 washers (art. 1610).

Dieser artikel wird mit dichtringen aus PA66 (art. 1610) Mitgeliefert.

Livré avec joints en PA66 (art. 1610).

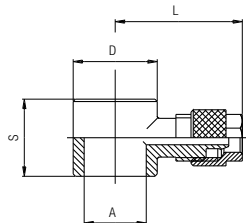
Este artículo viene completo de arandelas en nylon PA66 (art.1610).

Este item vem acompanhado de arruelas em PA66 (cód. 1610).

## 1500

### ANELLO ORIENTABILE A L

SINGLE BANJO BODY  
RINGANSCHLUSS  
CORPS SIMPLE POUR BANJO  
ANILLO ORIENTABLE SIMPLE  
ANEL ORIENTÁVEL EM "L"

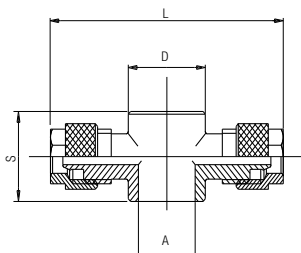


Code	Tube	A	D	S	L	Pack.
01500 00 001	4/2.7	M5	9	12.5	21.5	10
01500 00 002	4/2.7	M6	9	12.5	21.5	10
01500 00 003	4/2.7	1/8	14	15	22.5	10
01500 00 004	5/3	M5	9	12.5	22	10
01500 00 005	5/3	1/8	14	15	22.5	10
01500 00 006	6/4	M5	9	12.5	22	10
01500 00 007	6/4	M6	9	12.5	22	10
01500 00 008	6/4	1/8	14	15	23	10
01500 00 009	6/4	1/4	18	17	25	10
01500 00 010	6/4	3/8	21	20	27	10
01500 00 011	8/6	1/8	14	15	24.5	10
01500 00 012	8/6	1/4	18	17	26	10
01500 00 013	8/6	3/8	21	20	27	10
01500 00 014	8/6	1/2	26	24	31	10
01500 00 015	10/8	1/8	14	15	27.5	10
01500 00 016	10/8	1/4	18	17	27.5	10
01500 00 017	10/8	3/8	21	20	30.5	10
01500 00 018	10/8	1/2	26	24	34	10
01500 00 019	12/10	3/8	21	20	31.5	10
01500 00 020	12/10	1/2	26	24	35	10
01500 00 021	15/12.5	1/2	26	24	36.5	10

## 1510

### ANELLO ORIENTABILE A T

DOUBLE BANJO BODY  
DOPPELTER RINGANSCHLUSS  
CORPS DOUBLE POUR BANJO  
ANILLO ORIENTABLE DOBLE  
ANEL ORIENTÁVEL EM "T"

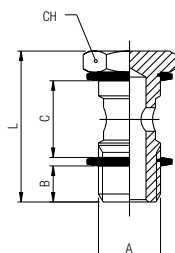


Code	Tube	A	D	S	L	Pack.
01510 00 001	4/2.7	M5	9	12.5	43	10
01510 00 002	4/2.7	1/8	14	15	43	10
01510 00 003	5/3	M5	9	12.5	43	10
01510 00 004	5/3	1/8	14	15	46.6	10
01510 00 005	6/4	M5	9	12.5	43	10
01510 00 006	6/4	1/8	14	15	46.6	10
01510 00 007	6/4	1/4	18	17	50.6	10
01510 00 008	6/4	3/8	21	20	53.6	10
01510 00 009	8/6	1/8	14	15	49.4	10
01510 00 010	8/6	1/4	18	17	55.2	10
01510 00 011	8/6	3/8	21	20	55	10
01510 00 012	8/6	1/2	26	24	61	10
01510 00 013	10/8	1/8	14	15	53	10
01510 00 014	10/8	1/4	18	17	59	10
01510 00 015	10/8	3/8	21	20	61	10
01510 00 016	10/8	1/2	26	24	66	10
01510 00 017	12/10	3/8	21	20	63	10
01510 00 018	12/10	1/2	26	24	70	10
01510 00 019	15/12.5	1/2	26	24	73	10

## LG 410

### VITE CAVA SINGOLA SERIE LEGGERA

BANJO STEM SINGLE LIGHT  
EINFACHE HOHLSCHRAUBE LEICHTE SERIE  
VIS POUR BANJO SIMPLE - SÉRIE LÉGÈRE  
TORNILLO SIMPLE SERIE LIGERA  
HASTE PARA CONEXÃO BANJO COM 1 CAVIDADE SÉRIE LEVE



Code	A	B	C	L	CH	Pack.
LG410 00 002	M5	3.5	9	18	8	10
LG410 00 003	M6	4	9	19	8	10

Questo articolo viene fornito completo di rondelle in PA66 (art. 1610).

This item will be supplied with the PA66 washers (art. 1610).

Dieser artikel wird mit dichtungen aus PA66 (art. 1610) Mitgeliefert.

Livré avec joints en PA66 (art. 1610).

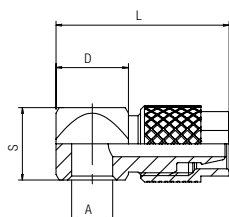
Este artículo viene completo de arandelas en nylon PA66 (art.1610).

Este item vem acompanhado de arruelas em PA66 (cód. 1610).

**LG 500**

**ANELLO ORIENTABILE SERIE LEGGERA**

SINGLE BANJO BODY LIGHT  
RINGANSCHLUSS LEICHTE SERIE  
CORPS SIMPLE POUR BANJO - SÉRIE LÉGÈRE  
ANILLO ORIENTABLE SIMPLE SERIE LIGERA  
ANEL ORIENTÁVEL SÉRIE LEVE

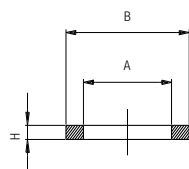


Code	Tube	A	D	S	L	Pack.
LG500 00 003	4/2.7	M5	9	9	17	10
LG500 00 005	4/2.7	M6	9	9	17	10
LG500 00 004	5/3	M5	9	9	17	10
LG500 00 002	6/4	M5	9	9	16.5	10
LG500 00 006	6/4	M6	9	9	16.5	10

**1600**

**RONDELLA IN ALLUMINIO**

ALUMINIUM WASHER  
DICHTSCHEIBE AUS ALUMINIUM  
JOINT EN ALUMINIUM  
ARANDELA EN ALUMINIO  
ARRUELA DE ALUMÍNIO

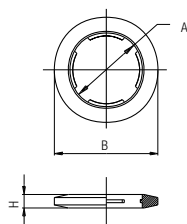


Code	Size	A	B	H	Pack.
01600 00 11 B5 00	M5	5.2	8	1	20
01600 00 11 02 00	1/8	10	14	1.5	20
01600 00 11 03 00	1/4	13.5	18	1.5	20
01600 00 11 04 00	3/8	16.8	21	1.5	20
01600 00 11 05 00	1/2	21.1	26	1.5	20
01600 00 11 D7 00	M12	12.5	18	1.5	20

**1610**

**RONDELLA DENTELLATA IN PA66**

PA66 NOTCHED-WASHER  
UNVERLIERBARE DICHTSCHEIBE AUS PA66  
JOINT IMPERDABLE EN PA66  
ARANDELA DENTADA EN NYLON PA66  
ARRUELA DENTADA DE PA66



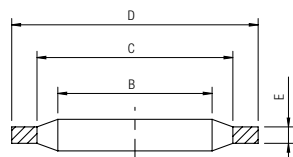
Code	Size	A	B	H	Pack.
01610 00 25 A7 00	M3	2.5	5.5	0.5	20
01610 00 25 B5 00	M5	5.2	8	1	20
01610 00 25 B8 00	M6	6.1	9	1.3	20
01610 00 25 02 00	1/8	10	14	1.5	20
01610 00 25 03 00	1/4	13.5	18	1.5	20
01610 00 25 04 00	3/8	16.8	21	1.5	20
01610 00 25 05 00	1/2	21.1	26	2	20
01610 00 25 07 00	3/4	27	32	2.5	20
01610 00 25 09 00	1"	34	41	2.5	20

	min	max
Temperature	- 20 °C	+ 90 °C

**1612**

**RONDELLA AUTOCENTRANTE BIMATERIALE IN ACCIAIO E NBR**

STEEL AND NBR CENTERING BIMATERIAL WASHER  
BI-MATERIAL STAHL SCHEIBE UND NBR  
JOINT BI-MATIÈRE - ACIER/NBR  
ARANDELA BIMATERIAL EN ACERO Y NBR  
ARRUELA BI-MATERIAL EM AÇO E NBR



Code	Size	B	C	D	E	Pack.
01612 00 001	1/8	10.4	12	14.7	1.25	20
01612 00 002	1/4	13.85	15.75	18.7	1.25	20
01612 00 003	3/8	17.35	19.25	22.7	1.25	20
01612 00 004	1/2	21.65	23.55	26.7	1.25	20
01612 00 005	3/4	27.3	29.2	32.5	1.25	20
01612 00 006	1"	34.2	36.1	39.5	2	20

	min	max
Temperature	- 30 °C	+ 100 °C