

CRANE TECHNOLOGY

Aluminium Workshop Crane

The Aluminium Workshop Crane:
Easy to carry!
To facilitate your work.

Aluminium Workshop Crane without counterweight

Aluminium Workshop Crane
Load capacity 250 kg

Version without counterweight
Dead weight 70 kg

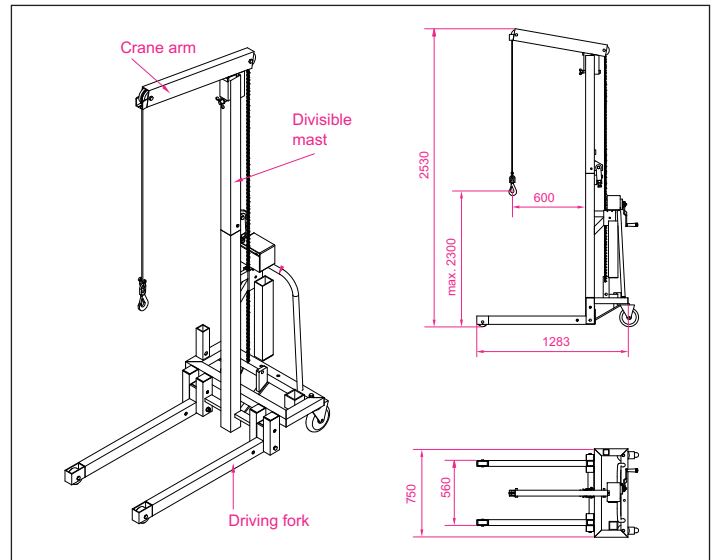
Description:

- The Aluminium Workshop Crane has been specially developed for businesses in need of a mobile lifting device
- Folded for transport it will fit into a van
- Top of mast extension is detachable
- The lifting fork is height adjustable under load.
- The product can be individually moved and rotated almost 'on the spot'.
- With just a few turns the Aluminium Workshop Crane can be folded away
- It can be moved into both euro flat pallets and pallet cages.

Scope of delivery:

- With crane arm (ref. figure 1)
- With lifting fork (ref. figure 2)
- With wire rope winch, including fold-down handle
- Driving fork height 95 mm (from the floor to the upper edge of the driving fork)
- Driving fork width 560 mm
- With 2 heavy-duty wheels
With a wheel and slewing ring brake
With elasticated solid rubber tyres, diameter 160 mm
These wheels are attached to the basic frame.
- With 2 guide rollers or fork wheels made from high-grade plastic, diameter 80 mm
These wheels are attached to the driving fork.
- With safety load hook with swivel (rotatable by 360° under load)
- Dimensions when folded up: 496 x 750 x 1,300 mm

Version with crane arm - figure 1



Version with lifting fork - figure 2

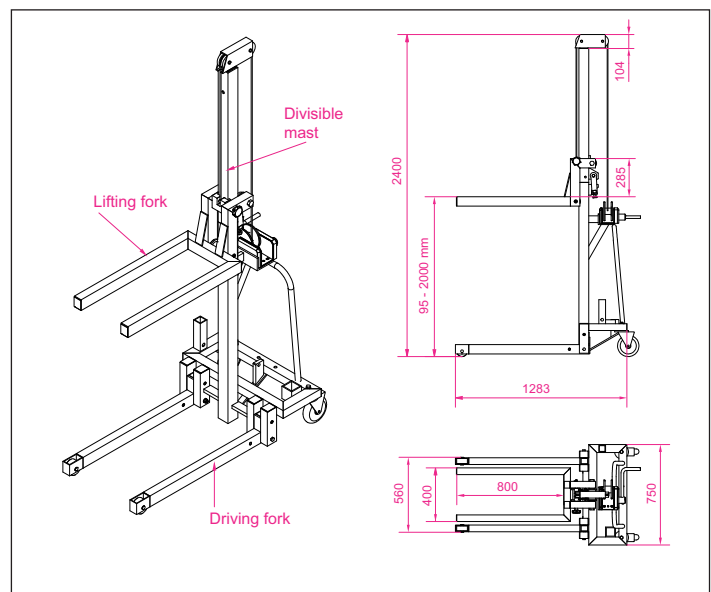


Figure 1:
Version with crane arm

- Total height 2,530 mm
- Jib length 600 mm
- Hook path 0 - 2,300 mm

Figure 2:
Version with lifting fork

- Total height 2,400 mm
- Width of lift. fork 400 mm
- Length of lift. fork 800 mm
- Lifting height 95 - 2,000 mm

Load capacity in kg	Type	Lifting height w/ lifting fork in mm	Width of lift. fork in mm	Length of lift. fork in mm	Width of base of forks in mm	With crane arm		Dimensions folded in mm	Weight in kg/pce	Item no.
						Jib length in mm	Hook path in mm			
250	without counterweight	2000	400	800	560	600	2300	496 x 750 x 1300	70	10151000015001

! Special versions for many areas of use!
Please contact us with your questions!



CRANE TECHNOLOGY

Aluminium Workshop Crane



Aluminium Workshop Crane with counterweight

Aluminium Workshop Crane
Load capacity 250 kg

Version with counterweight
Dead weight 400 kg

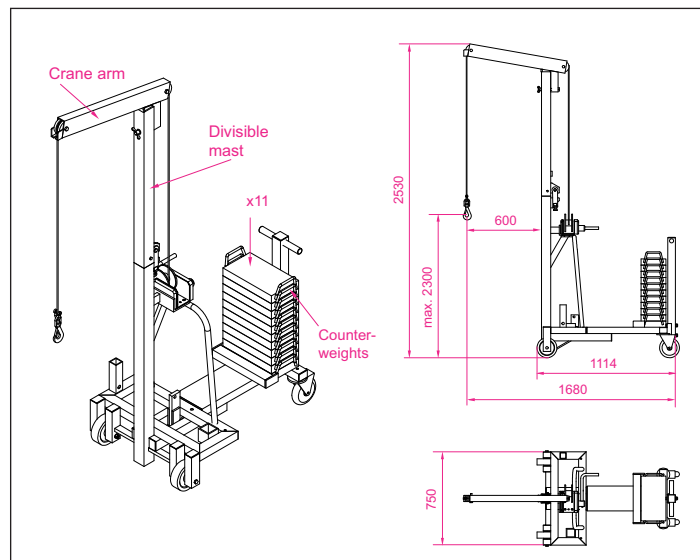
Description:

- The Aluminium Workshop Crane has been specially developed for businesses in need of a mobile lifting device
- Folded for transport it will fit into a van
- Top of mast extension is detachable
- The lifting fork is height adjustable under load.
- The product can be individually moved and rotated almost 'on the spot'.
- With just a few turns the Aluminium Workshop Crane can be folded away
- It can be moved into both euro flat pallets and pallet cages.
- The attachment part (including the counterweight) can be removed from the Aluminium Workshop Crane.

Scope of delivery:

- With crane arm (ref. figure 3)
- With lifting fork (ref. figure 4)
- With wire rope winch, including fold-down handle
- With 11 counterweights
The counterweights are equipped with a lock to prevent them from being accidentally removed.
- With 2 heavy-duty wheels
With elasticated solid rubber tyres, diameter 160 mm
These wheels are attached to the basic frame (front).
- With 2 heavy-duty wheels
With a wheel and slewing ring brake
With elasticated solid rubber tyres, diameter 160 mm
These wheels are attached to the attachment part (back).
- With safety load hook with swivel (rotatable by 360° under load)
- Dimensions when folded up: 432 x 750 x 1,300 mm + attachment part

Version with crane arm - figure 3



Version with lifting fork - figure 4

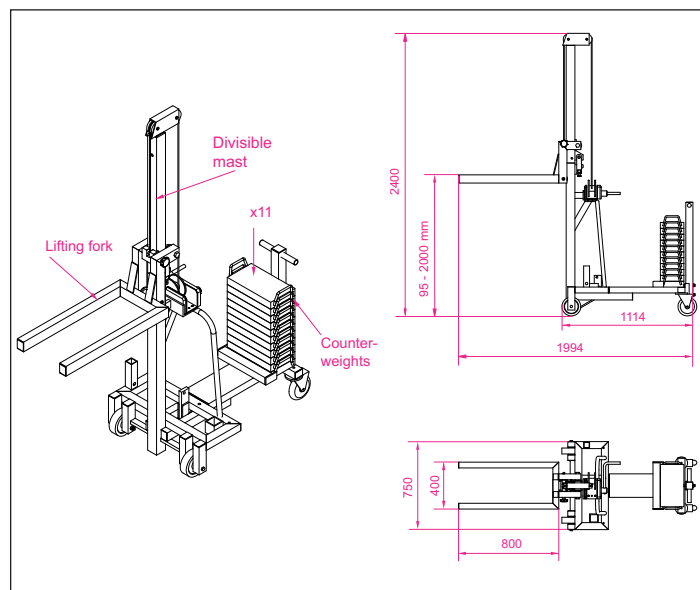


Figure 3:
Version with crane arm

- Total height 2,530 mm
- Jib length 600 mm
- Hook path 0 - 2,300 mm

Figure 4:
Version with lifting fork

- Total height 2,400 mm
- Width of lift. fork 400 mm
- Length of lift. fork 800 mm
- Lifting height 95 - 2,000 mm

Load capacity in kg	Type	Lifting height w/ lifting fork in mm	Width of lift. fork in mm	Length of lift. fork in mm	Width of base forks in mm	With crane arm		Dimensions folded in mm	Weight in kg/pce	Item no.
						Jib length in mm	Hook path in mm			
250	with counterweight	2000	400	800	-	600	2300	432 x 750 x 1300 + attachm.part	400	10151000015002

Special versions for many areas of use!
Please contact us with your questions!



CRANE TECHNOLOGY

Workshop Cranes

Movable Workshop Cranes with Parallel or Spread Chassis, Foldable

High-quality lightweight crane for occasional use with parallel or spread chassis. Optional working load limit of 500 kg or 1,000 kg.

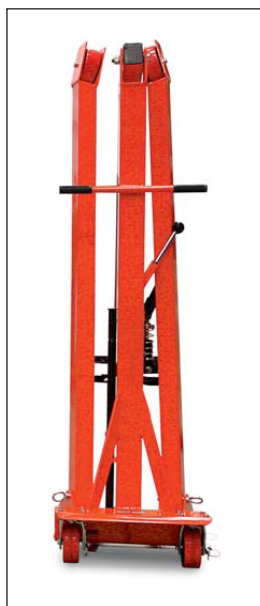
Benefits:

- Can be quickly and easily folded up into a compact size for periods of non-use
- Easy-to-operate lever for manual hydraulic hoisting of the load
- Remains movable even when folded up (without load)
- Ideal assistant for occasional use with the largest lift in its device class
- 80 mm lift without load, 20 mm lift with load
- With locking device on the guide wheels

Largest lift in its price class!



Type PKS folded



Type VKS folded



F500VKS
F1000VKS

Parallel chassis

Load capacity max. in kg	Type	Jib range in front of wheels in mm	Jib range in front of hydraulics in mm	Chassis outer/inner in mm	Lifting height* in mm	Weight in kg/pce	Item no. Parallel chassis
500 - 250	F500PKS	0	790-1090	1000/900	2100/2330	130	10151000015003
1000 - 500	F1000PKS	0	790-1090	1000/900	2100/2330	135	10151000015004

* Max. with jib arm retracted/jib arm extended

Spread chassis

Load capacity max. in kg	Type	Jib range in front of wheels in mm	Jib range in front of hydraulics in mm	Chassis outer/inner in mm	Lifting height* in mm	Weight in kg/pce	Item no. Spread chassis
500 - 250	F500VKS	0	790-1090	1000/900	2100/2330	125	10151000015013
1000 - 500	F1000VKS	0	790-1090	1000/900	2100/2330	125	10151000015014

* Max. with jib arm retracted/jib arm extended

CRANE TECHNOLOGY

Workshop Cranes



Movable Workshop Cranes with Parallel Chassis 'Industry'

High-quality workshop crane 'made in Germany' for regular industrial use with a parallel chassis for straddling euro pallets or pallet cages. Optional working load limit of 1,000 kg, 2,000 kg or 3,000 kg.

Benefits:

- Robust design, therefore highly durable
- 13 jib positions for large jib lengths and lifting heights
- Adjustable manual pump reduces the effort in relation to heavy loads and enables faster pumping without or with small loads
- Pump enables the load to be held for a long time without being lowered
- Mechanical drive positioner reduces the effort required to move the crane and enables a controlled approach to expensive machinery or with sensitive loads
- The crane and load can be moved by a single person – even with a 3 ton load
- In connection with the 180°-steerable drawbar of the mechanical drive positioner, the crane is extremely versatile
- Manual device

Robust and durable!



Mechanical drive positioner

HB2000FaPo also straddles 1,000 mm pallets



Load capacity max. in kg	Type	Jib range in front of wheels in mm	Jib range in front of hydraulics in mm	Chassis outer/inner in mm	Lifting height* in mm	Weight in kg/pce	Item no.
1000 - 90	HB1000FaPo	0-1488	650-2450	980/825	2350/3750	290	10151000015005
2000 - 155	HB2000FaPo	0-1730	1100-3200	1250/1050	3450/5390	520	10151000015006
3000 - 200	HB3000FaPo	0-1635	1100-3200	1600/1400	3475/5410	800	10151000015007

* Max. with jib arm retracted/jib arm extended

CRANE TECHNOLOGY

Workshop Cranes

Industry Crane with Counterweight 'Industry'

High-quality, particularly durable industrial crane with a counterweight 'made in Germany' for regular industrial use. Optional working load limit of 500 kg, 1,000 kg or 2,000 kg.

Benefits:

- Ideal for maintenance work conducted indoors or above machinery
- Thanks to the chassis being placed at the back, loads or machinery can be directly approached
- 13 jib positions for large jib lengths and load bearing capacities
- Adjustable manual pump reduces the effort in relation to heavy loads and enables faster pumping without or with small loads
- Pump enables the load to be held for a long time without being lowered
- Mechanical drive positioner reduces the effort required to move the crane and enables a controlled approach to expensive machinery or with sensitive loads
- Even the HB2000GKFaPo can be moved by a single person
- In connection with the 180°-steerable drawbar of the mechanical drive positioner, the crane is extremely versatile
- Manual device



HB1000GKFaPo



HB500GKFaPo

HB1000GKBRP is also available with electric operation ON REQUEST!



HB1000GKBRP
Even more convenient and productive thanks to the electric lift and drive unit

Mechanical drive positioner

Load capacity max. in kg	Type	Jib range in front of hydraulics in mm	Jib range in front of wheels in mm	Jib range in mm	Chassis outer in mm	Lifting height* in mm	Weight in kg/pce	Item no.
500 - 90	HB500GKFaPo	630-2430	730-2530	1100-2900	800	2400/3750	360 +1000**	10151000015010
1000 - 90	HB1000GKFaPo	630-2430	730-2530	1100-2900	800	2400/3750	365 +1000**	10151000015011
2000 - 155	HB2000GKFaPo	1075-3175	1025-3125	1650-3750	1000	3240/5000	650 +2000**	10151000015012

* Max. with jib arm retracted/jib arm extended

** The crane is only operational with the counterweight box filled. Counterweight filling material can be ordered with your crane at extra cost.

CRANE TECHNOLOGY

Workshop Cranes



Counterweight Crane

High-quality, particularly durable industrial crane with a counterweight 'made in Germany' and a load capacity of 500 kg for occasional use.

Benefits:

- Dual-action manual hydraulics for securely lifting and lowering the load
- Thanks to the chassis being placed at the back, loads or machinery can be directly approached
- Simple manoeuvrability thanks to manual drawbar with steering control deflection of 180 degrees
- Device locked into place by positioning the drawbar vertically
- Drive-through width of just 800 mm, meaning the device fits through almost any door
- Convenient operation thanks to the large safety load hook and ergonomic handles for positioning the boom
- Comes with filled counterweight boxes



IT1500N folded away



Greatest manual lift in its class! Lift of 1 m reached with just 8-16 strokes.

IT1500N

Further advantages of the IT1500B07:

- Design with battery-operated electric lift
- Comes with battery and a separate charger
- With adjustable lowering speed as standard



IT1500B07

The electric lift makes things even easier! The manual button enables you to choose whether to stand by the crane or the load.

Load capacity max. in kg	Type	Jib range in front of wheels in mm	Jib range in mm	Chassis outer in mm	Lifting height* in mm	Weight in kg/pce	Item no.
500 - 175	IT1500N	465-1625	925-2085	800	2300/2950	600	10151000015008
500 - 220	IT1500B07	465-1625	925-2085	800	2300/2950	745	10151000015009

* Max. with jib arm retracted/jib arm extended

CRANE TECHNOLOGY

Workshop Cranes

Hydraulic Counterweight Crane with collapsible Jib Arm

3 models with max. capacities of 250 kg, 350 kg and 550 kg

- Ideal for loading and unloading of trucks and for lifting and lowering of machines, work at loading ramps etc.
- All models with double-action hydraulic pump (lifting on every pump movement)
- Big jib range due to adjustable jib arm (5 positions)
- Collapsible jib arm for space-saving transport and storage
- Handle-controlled tandem steering wheels with locking mechanism on the basic frame
- Big wheels with ball bearing and foot guard
- Safety swivel hook with 360° rotation
- Delivery includes counterweight box and tool tray

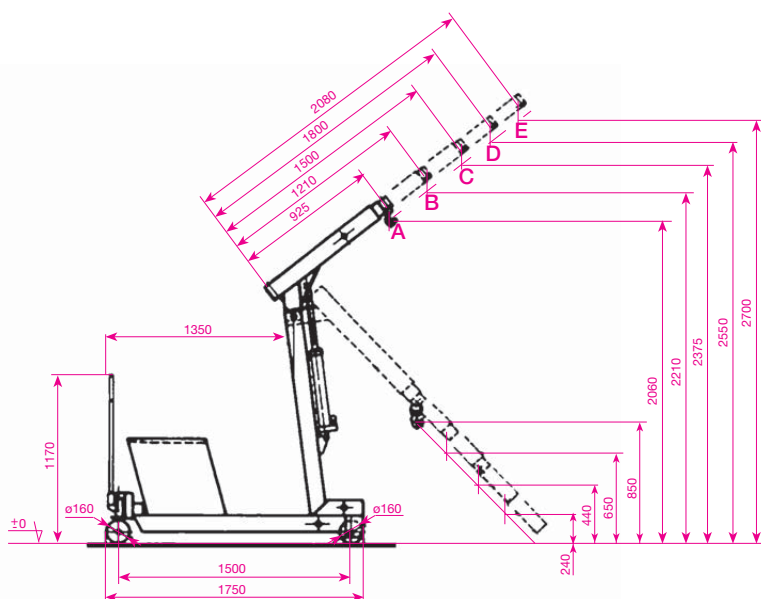
- Counterweight blocks: each block has a threaded jacket into which a ring bolt can be screwed so that the block can be easily removed/attached using a forklift/crane once the two mounting screws on the frame have been loosened. This makes the counterweight crane easier to transport and suitable for use on several building sites. The block is highly stable and has a tool tray. The rounded edges offer greater safety and make the block more attractive.
- Scope of delivery: Counterweight crane with counterweight block and tool tray (fully assembled ready for operation)
- Individual custom solutions available on request



MKS 550 G



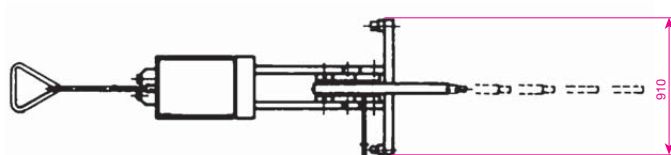
MKS 550 G
folded away



Control lever/button



Tandem wheels



Load capacity max. in kg	Type	Load capacity at jib arm length in kg					Weight in kg/pce	Item no.
		925 mm A	1210 mm B	1500 mm C	1800 mm D	2080 mm E		
250	MKS 250G	250	200	150	100	50	390	10151000015021
350	MKS 350G	350	280	210	150	100	460	10151000015022
550	MKS 550G	550	450	350	250	150	600	10151000015023

CRANE TECHNOLOGY

Workshop Cranes



Workshop Crane with hinged jib arm and V-shaped chassis, for occasional use

Load capacities 500 and 1,000 kg

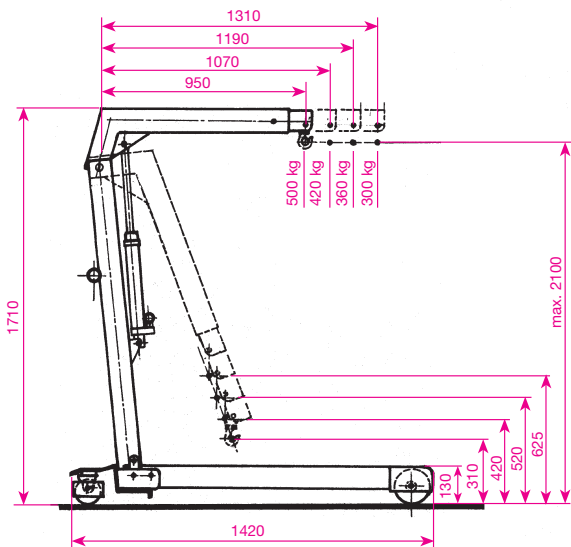
- All models with double-action hydraulic pump (pump lever works in both directions to lift the load faster)
- Jib arm adjustable in 4 positions
- Rugged hydraulics with precisely adjustable lowering speed
- Both steering wheels with foot brake
- Big wheels for easy movement
- All wheels with foot guard
- All cranes CE-marked



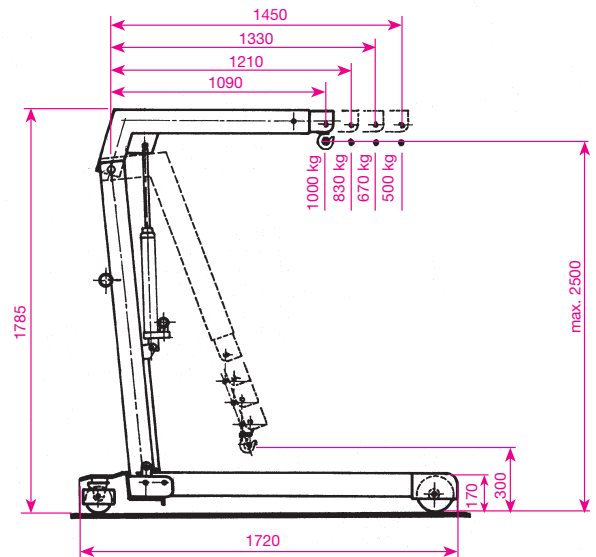
MKS 500 DW-S



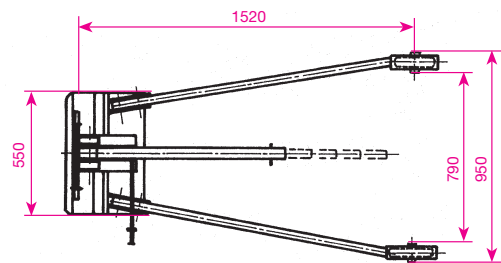
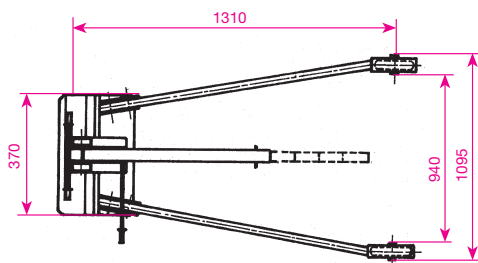
MKS 500 DW-S folded away



MKS 500 DW-S



MKS 1000 DW-S



Load capacity max. in kg	Type	Chassis	Characteristics	Weight in kg/pce	Item no.
500	MKS 500 DW-S	V-shaped	foldable	73	10151000015015
1000	MKS 1000 DW-S	V-shaped	foldable	108	10151000015016

CRANE TECHNOLOGY

Workshop Cranes

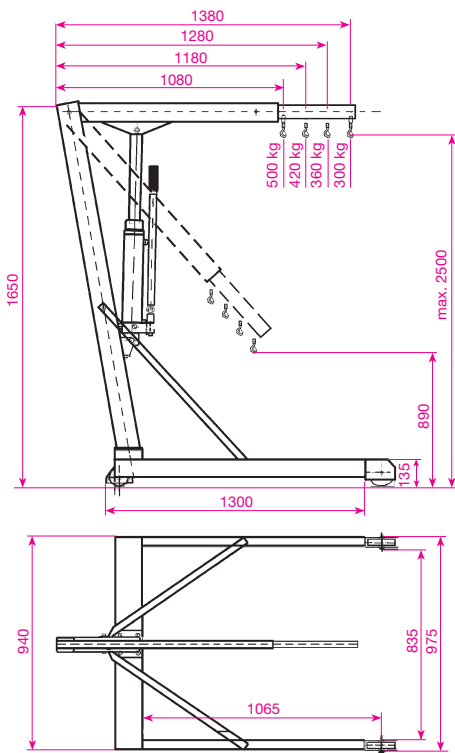
Workshop Crane, collapsible with parallel Chassis for Work over Pallets

Load capacities 500 and 1,000 kg

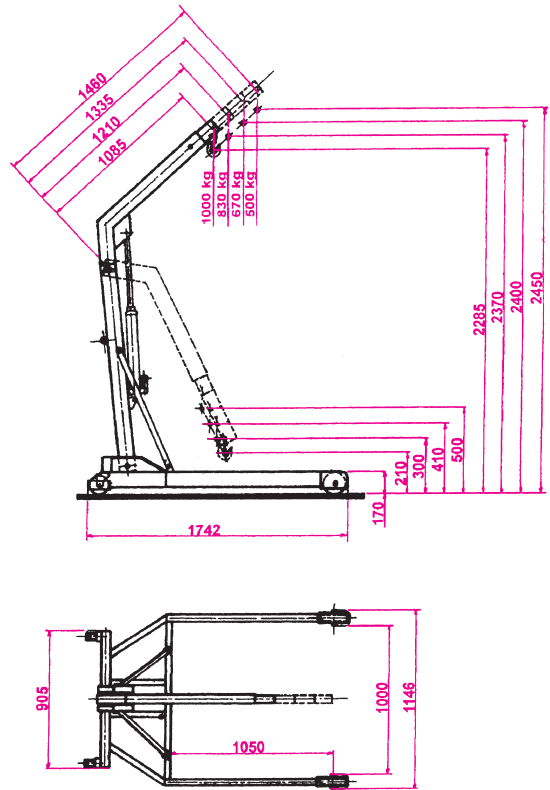
- All models with double-action hydraulic pump (pump lever works in both directions to lift the load faster)
- Jib arm adjustable in 4 positions
- Rugged hydraulics with precisely adjustable lowering speed
- Both steering wheels with foot brake (MKS 500 PDW + MKS 1000 PDW)
- Big wheels for easy movement
- All wheels with foot guard
- All cranes CE-marked



MKS 1000 PDW



MKS 500 PDW



MKS 1000 PDW

Load capacity max. in kg	Type	Chassis	Characteristics	Weight in kg/pce	Item no.
500	MKS 500 PDW	parallel	collapsible	73	10151000015017
1000	MKS 1000 PDW	parallel	collapsible	121	10151000015018

CRANE TECHNOLOGY

Workshop Cranes



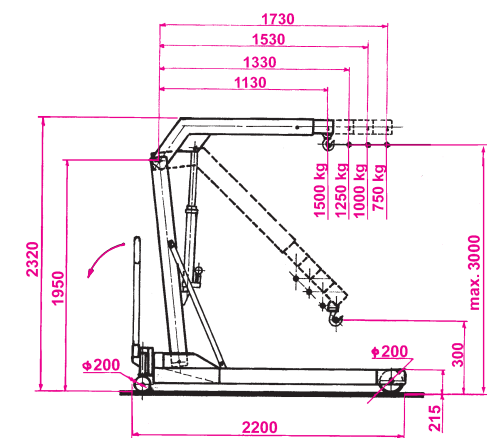
Workshop Crane, collapsible with parallel Chassis for Work over Pallets

Load capacities 1,500 and 2,000 kg

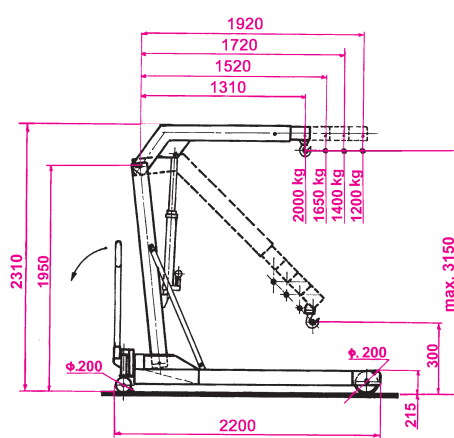
- All models with double-action hydraulic pump (pump lever works in both directions to lift the load faster)
- Jib arm adjustable in 4 positions
- Rugged hydraulics with precisely adjustable lowering speed
- PU wheels on aluminium rim. All 4 wheels with ball bearing, Ø 200 mm (MKS 1500 PDW + MKS 2000 PDW)
- Handle bar-steered tandem wheels with locking device at the frame (MKS 1500 PDW + MKS 2000 PDW)
- Big wheels for easy movement
- All wheels with foot guard
- All cranes CE-marked



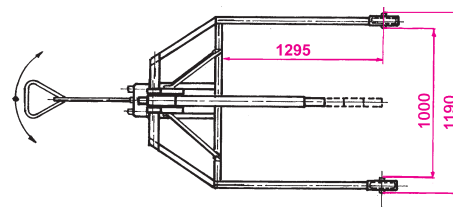
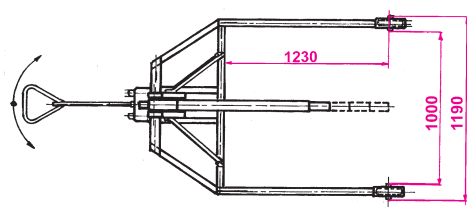
Photo shows type MKS 2000 PDW



MKS 1500 PDW



MKS 2000 PDW



Load capacity max. in kg	Type	Chassis	Characteristics	Weight in kg/pce	Item no.
1500	MKS 1500 PDW	parallel	collapsible	230	10151000015019
2000	MKS 2000 PDW	parallel	collapsible	250	10151000015020