

CRANE TECHNOLOGY

Movable Cranes

Movable crane type WK 1



Highly flexible with the movable crane

Without any fixing, this movable pillar jib crane can be used wherever it is needed. The crane can be transported within minutes using existing equipment like a forklift truck or an overhead crane or it may be moved by mounting the mechanical or hydraulic wheels, which are available as accessories. The 400 V electrical connection is provided via an extension cable to make the crane instantly ready for use. The jib range can be considerably increased with the articulated jib arm. Even corners or areas blocked with columns can be reached. The crane can be fitted with hoists or handling devices from many different manufacturers.

The WK1 crane offers the following advantages:

- Easy installation
- Easy moving jib arm and trolley
- Jib arm with adjustable strap brake
- High stability

Optionally available:

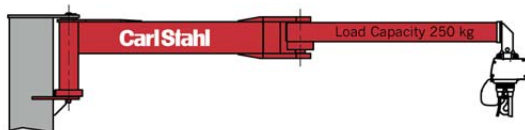
- Slewing range restriction mechanism for restricting the slewing range in 30° intervals or slewing locking device to prevent the jib from slewing when the crane is being moved from one place to another.
- Also available with an operating voltage of 230 V



Pictured chain hoist and wheels not included in price and delivery.

Attention! For safety reasons these cranes are only delivered with the original foundation filling material (see page 41).

Model A

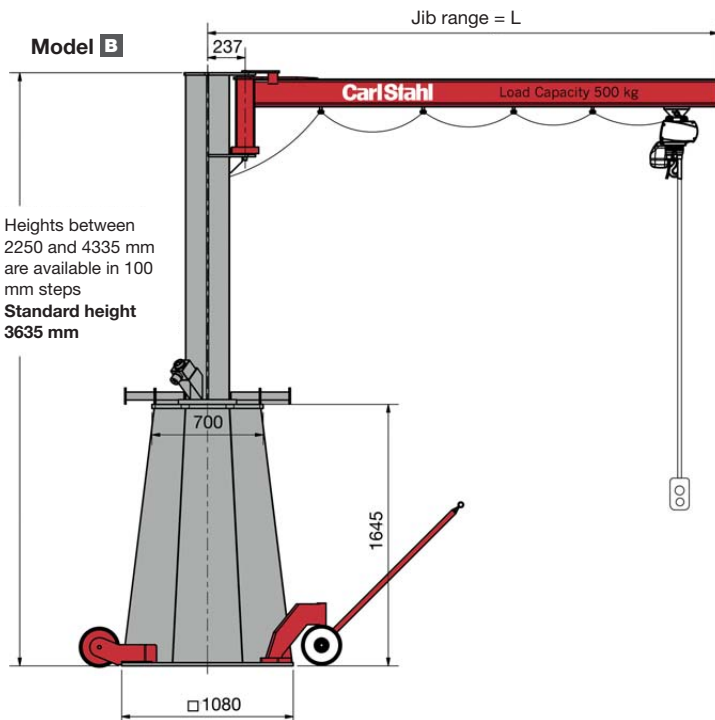


Movable crane WK 1 with articulated jib arm, slewing range 310°, model A

Load capacity in kg	L max. in mm	Overall height in mm	Crane weight in kg without hoist without filling material	Item no.
125	4400	3635	725	10201500015066
250	3000	3635	680	10201500015065
500	1750	3635	630	10201500015064

Total crane weight including filling material 3,200 kg

Model B



Movable crane WK 1 with standard jib arm, slewing range 270°, model B

Load capacity in kg	L max. in mm	Overall height in mm	Crane weight in kg without hoist without filling material	Item no.
100	4715	3635	635	10201500015063
160	4065	3635	627	10201500015062
200	3665	3635	610	10201500015061
250*	3215	3635	600	10201500015060
320	2600	3635	590	10201500015059
400	2150	3635	575	10201500015058
500	1750	3635	565	10201500015057

Total crane weight including filling material 3,200 kg



Attention: Please note that the model with articulated jib arm does not feature the push trolley. The hoist is attached directly to a support plate at the tip of the jib arm (see fig. A).

Suitable chain hoists can be found from page 94.

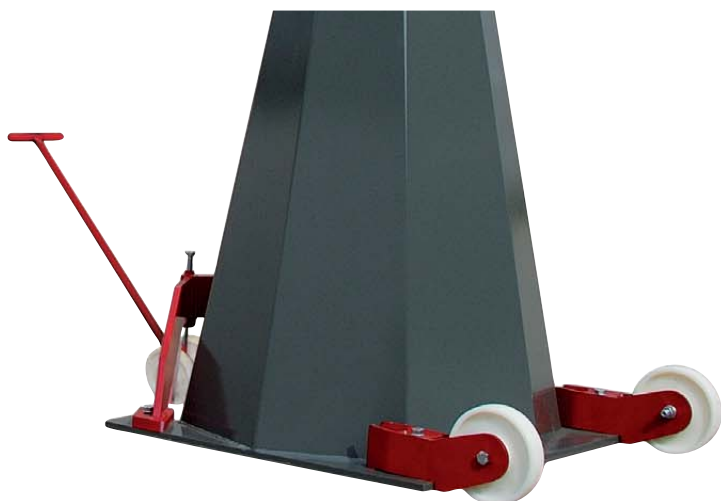
CRANE TECHNOLOGY

Movable Cranes - Accessories



Mechanical Wheel Set

The mechanical wheel set allows fast and easy movement of the crane to its next site. High quality polyamid wheels (diameter 250 mm) and a robust draw bar ensure smooth running.



Type	Stroke in m	Weight in kg	Item no.
Mechanical wheel set for WK 1 and WK 3 (Load capacity 4,000 kg)	20	85	10401500015002

Hydraulic Wheel Set

The hydraulic wheel set is the more convenient way to move the crane. It consists of 3 single-acting hydraulic cylinders with a stroke of 25 mm, 1 hydraulic hand pump preset to 350 bar, together with the complete piping and hose system.



Type	Stroke max. in mm	Weight in kg	Item no.
Hydraulic wheel set for WK 1 and WK 3 (Load capacity 4,000 kg)	25	90	10401500015081
Hydraulic wheel set for WK-SL (Load capacity 5,000 kg)	25	90	10401500015082

Foundation Pillar Filling Material

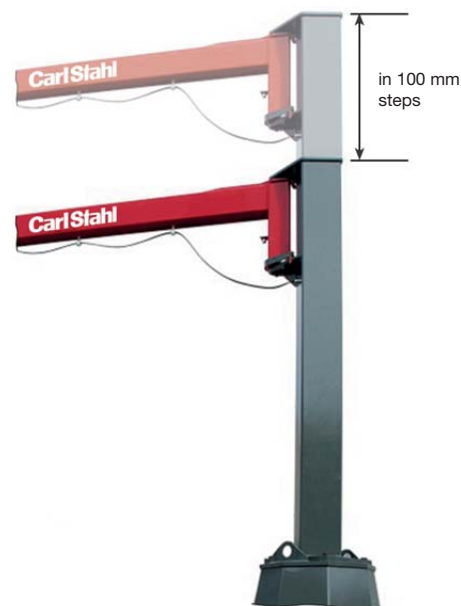
For best stability only use the original filling material!



Type	Item no.
Filling material for foundation pillar WK 1	10401500015001
Filling material for foundation pillar WK 3	10401500015001
Filling material for foundation pillar WK-SL	10401500015001

Additional pillar height

The crane pillar may be heightened in 100 mm-steps to ensure the ideal ergonomic working height of the crane.



Type
Additional pillar height for WK 1, Basic height 3,635 mm
Additional pillar height for WK 3, Basic height 3,600 mm
Additional pillar height for WK-SL, Basic height 3,850 mm

CRANE TECHNOLOGY

Movable Cranes

Movable crane WK3 - 360° slewing range



Versatile and mobile for heavy loads

The movable crane WK3 with counterweight offers high mobility in connection with capacities up to 1,000 kg. As the WK1 also the WK3 can be transported within minutes using existing equipment like a forklift truck or an overhead crane or it may be moved by mounting the mechanical or hydraulic wheels, which are available as accessories. Electrically connected with an extension cord it is immediately ready for use. The crane can be fitted with hoists or handling devices from many different manufacturers.

The WK3 crane offers the following advantages:

- Thanks to counterweight high load capacities of up to 1,000 kg
- Slewing range 360° (slewing limit stops available as option)
- Easy installation
- Easy moving jib arm and trolley
- Jib arm with adjustable strap brake
- Low space requirement
- High stability

Optionally available:

- Slewing range restriction mechanism for restricting the slewing range in 30° intervals or slewing locking device to prevent the jib from slewing when the crane is being moved from one place to another.
- Also available with an operating voltage of 230 V



Pictured chain hoist and wheels not included in price and delivery.

Attention! For safety reasons these cranes are only delivered with the original foundation filling material (see page 41).

Model A

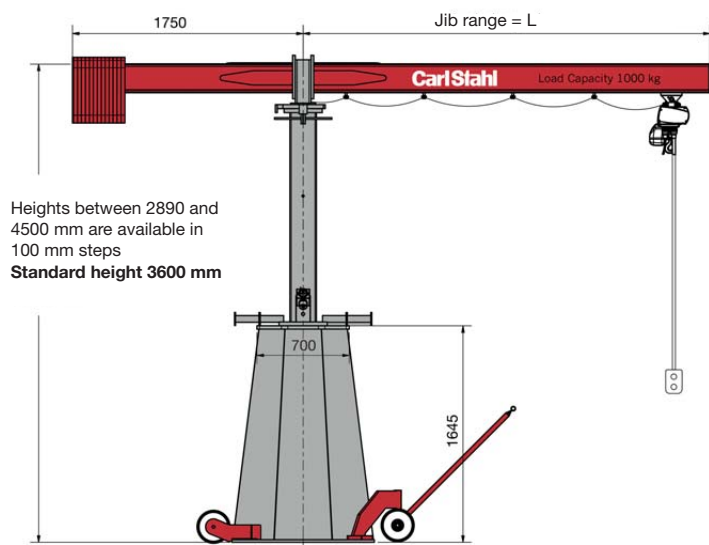


Movable crane type WK3 without counterweight, slewing range 360°, model A

Load cap. in kg	Jib range L in mm	Overall height in mm	Crane weight in kg without hoist without filling material	Item no.
100	4500	3600	700	10201500015080
160	4000	3600	680	10201500015079
200	3600	3600	660	10201500015078
250	3100	3600	650	10201500015077
320	2600	3600	640	10201500015076
400	2150	3600	625	10201500015075
500	1750	3600	600	10201500015074

Total crane weight including filling material 3,300 kg

Model B



Movable crane type WK3 with counterweight, slewing range 360°, model B

Load cap. in kg	Jib range L in mm	Overall height in mm	Crane weight in kg without hoist without filling material	Item no.
200	4500	3600	1230	10201500015073
320	4000	3600	1220	10201500015072
400	3600	3600	1210	10201500015071
500	3100	3600	1200	10201500015070
600	2750	3600	1190	10201500015069
800	2150	3600	1175	10201500015068
1000	1750	3600	1170	10201500015067

Total crane weight including filling material 3,800 kg

CRANE TECHNOLOGY

Movable Cranes



Movable crane type WK-SL - 360° slewing range



Versatile and mobile for heavy loads with maximum jib length

The movable crane WK-SL offers both high mobility and good capacity at maximum jib length. Like the WK1 and the WK3, the WK-SL can also be transported within minutes using existing equipment like a forklift truck, an overhead crane or the optionally retrofittable hydraulic ground trolley. It is then instantly ready for operation with a 400 V electrical connection via an extension cable. The crane can be fitted with hoists or handling devices from many different manufacturers.

The WK-SL crane offers the following advantages:

- Thanks to counterweight high load capacities of up to 600 kg
- Slewing range 360° (slewing limit stops available as option)
- Easy installation
- Easy moving jib arm and trolley
- Jib arm with adjustable strap brake
- Low space requirement

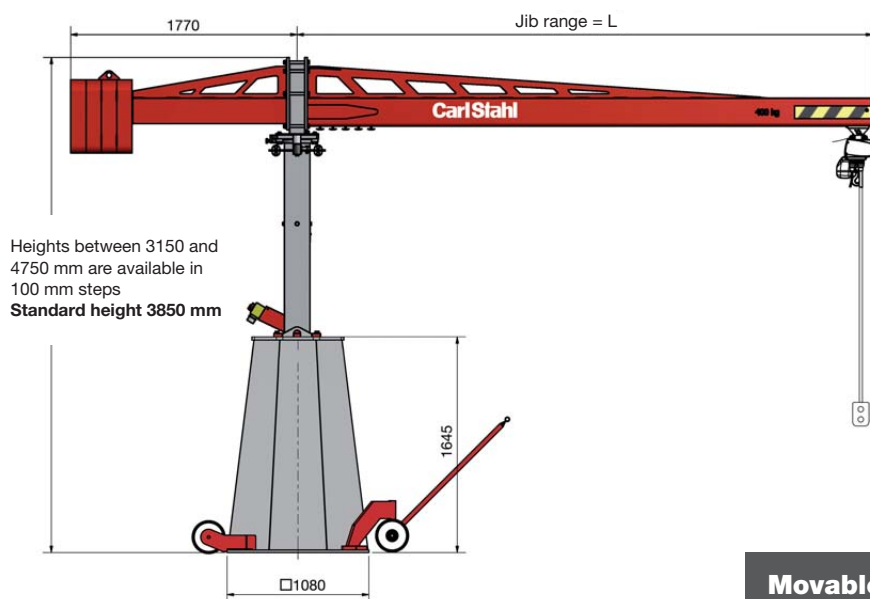
Optionally available:

- Also available with an operating voltage of 230 V



Pictured chain hoist and wheels not included in price and delivery.

Attention! For safety reasons these cranes are only delivered with the original foundation filling material (see page 41).



Movable crane type WK-SL with counterweight, slewing range 360°

Load cap. in kg	Jib range L in mm	Overall height in mm	Crane weight in kg without hoist without filling material	Item no.
400	4500	3850	1800	10201500015084
500	4000	3850	1780	10201500015083
550	3600	3850	1765	10201500015082
600	3100	3850	1750	10201500015081

Total crane weight including filling material 4,800 kg

CRANE TECHNOLOGY

Aluminium Tripod

Aluminium tripod with rubber-metal feet - Load capacity 3,000 kg

Description:

- Used to hoist loads, especially in places that are difficult for conventional devices to access.
- Wide adjusting range due to telescopic legs
- The ring bolt can be rotated 360° under load.
- High stability through anti-slip rubber-metal linings on bottom of legs
- Stability guaranteed.
- The sophisticated design means that no safety chain or similar is required with our standard version.

Description - Aluminium Tripod - fig. 1:

- Collapsible, overall height for transport 2 m, diameter approx. 450 mm (e.g. in transport condition).

Description - Aluminium Tripod with hand winch - fig. 2:

- Collapsible, overall height for transport 2,200 mm, diameter approx. 600 mm (e.g. in transport condition).
- The winch crank is equipped with a drum direct-gear allowing to quickly wind off the unloaded cable (with integrated safety hook)
- The winch is detachable and can be flange-mounted at any desired height on the tripod
- Rope length 25 m, rope ø 8 mm
- The load can be suspended from either the safety load hook on the rope or directly from the ring bolt.

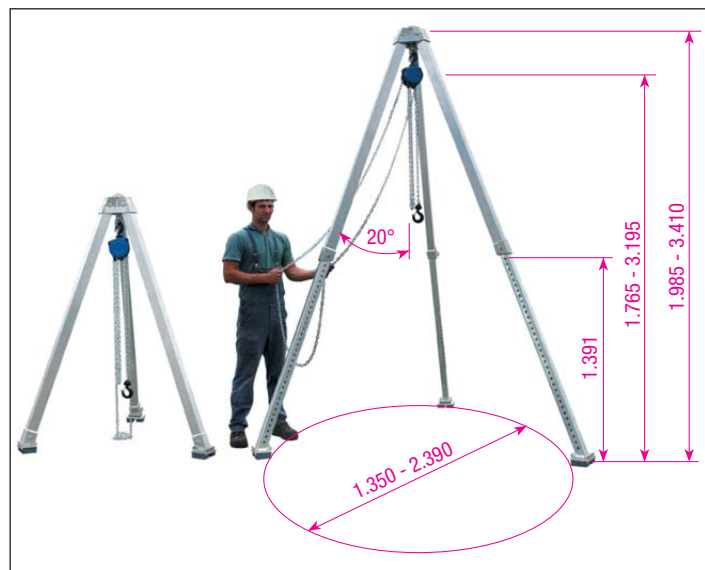
Load capacity in kg	Type	Lifting height min./max. in mm	Weight in kg/pce	Item no.
1000	standard	1765-3195	54	10350000015001
1000	w/ hand winch	1765-3195	74	10350000015002
NEW! 2000	standard	1765-3195	66	10350000015046
3000	standard	1765-3195	110	10350000015048



Please note: Pictured chain block and securing chain not included.

For chain blocks see from page 122

Aluminium Tripod - figure 1



Aluminium Tripod with hand winch - figure 2



On request the aluminium tripods are also available with an electric wire rope winch. Please contact us for details!

