

SHAFT COLLAR - METRIC



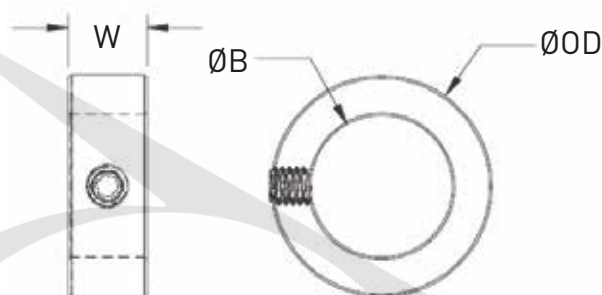
SHAFT COLLARS METRIC

Description

Bore tolerance: + +0.050mm to +0.020mm  
 Width tolerance: + .076mm to - .254mm

Materials

Steel: 230M07PB zinc plated 'Trivalent'  
 Stainless steel: 303  
 Temperature range: +5°C to 180°C  
 Additional sizes are available.



METRIC DIMENSION SERIES

Part Number Zinc Plated	Part Number Stainless Steel	Bore B (mm)	Outer Diameter OD (mm)	Width W (mm)	Set Screw
SH-C-M04SLD	SH-C-M045LD SS	4	8	5	M2.5x3
SH-C-M05SLD	SH-C-M045LD SS	5	10	6	M3x4
SH-C-M06SLD	SH-C-M065LD SS	6	12	8	M4x4
SH-C-M07SLD		7	12	8	M4x4
SH-C-M08SLD	SH-C-M08SLD SS	8	16	8	M4x4
SH-C-M09SLD		9	18	10	M5x5
SH-C-M10SLD	SH-C-M10SLD SS	10	20	10	M5x5
SH-C-M11SLD		11	20	10	M6x6
SH-C-M12SLD	SH-C-M12SLD SS	12	22	12	M6x6
SH-C-M13SLD		13	22	12	M6x6
SH-C-M14SLD	SH-C-M14SLD SS	14	25	12	M6x6
SH-C-M15SLD	SH-C-M15SLD SS	15	25	12	M6x8
SH-C-M16SLD	SH-C-M16SLD SS	16	28	12	M6x8
SH-C-M17SLD		17	28	12	M6x8
SH-C-M18SLD	SH-C-M18SLD SS	18	32	14	M6x8
SH-C-M20SLD	SH-C-M20SLD SS	20	32	14	M6x8
SH-C-M22SLD	SH-C-M22SLD SS	22	36	14	M8X8
SH-C-M24SLD		24	40	16	M8X8
SH-C-M25SLD	SH-C-M25SLD SS	25	40	16	M8X8
SH-C-M28SLD	SH-C-M28SLD SS	28	45	16	M8X10
SH-C-M30SLD	SH-C-M30SLD SS	30	45	16	M8X8
SH-C-M32SLD	SH-C-M32SLD SS	32	50	16	M8X10
SH-C-M35SLD	SH-C-M35SLD SS	35	56	16	M8X12
SH-C-M38SLD	SH-C-M38SLD SS	38	56	16	M8X10
SH-C-M40SLD	SH-C-M40SLD SS	40	63	18	M10X16
SH-C-M45SLD	SH-C-M45SLD SS	45	70	18	M10X16
SH-C-M50SLD	SH-C-M50SLD SS	50	80	18	M10X16

SHAFT COLLAR - IMPERIAL



SHAFT COLLARS IMPERIAL

Description

Bore tolerance:

Up to 1" + .0005" to + .002"

1-1/16" to 2" + .0005" to + .003"

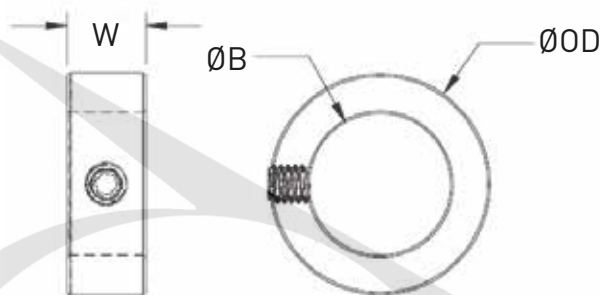
Materials

Steel: 230M07PB zinc plated "Trivalent"

Stainless Steel: 303

Temperature range: +5°C to + 180°C

Additional sizes are available.



IMPERIAL DIMENSION SERIES

Part Number Zinc Plated	Part Number Stainless Steel	Bore B (mm)	Outer Diametre OD (mm)	Width W (mm)	Set Screw
SH-C-03	SH-3-SS	0.1875	7/16	0.280	#8-32x1/8
SH-C-04	SH-4-SS	0.2500	1/2	0.281	#8-32x1/8
SH-C-05	SH-5-SS	0.3125	5/8	0.344	#10-32x5/32
SH-C-06	SH-6-SS	0.3750	3/4	0.375	1/4-20x3/16
SH-C-07		0.4375	7/8	0.438	1/4-20X1/4
SH-C-08	SH-8-SS	0.5000	1	0.438	1/4-20x1/4
SH-C-09		0.5625	1	0.438	1/4-20X1/4
SH-C-10	SH-10-SS	0.6250	1-1/8	0.500	5/16-18x1/4
SH-C-11		0.6875	1-1/4	0.563	5/16-18X1/4
SH-C-12	SH-12-SS	0.7500	1-1/4	0.563	5/16-18x1/4
SH-C-13		0.8125	1-5/16	0.563	5/16-18X1/4
SH-C-14	SH-14-SS	0.8750	1-1/2	0.563	5/16-18x5/16
SH-C-15		0.9375	1-5/8	0.563	5/16-18x5/16
SH-C-16	SH-16-SS	1.0000	1-5/8	0.625	5/16-18x5/16
SH-C-17		1.0625	1-3/4	0.625	5/16-18x5/16
SH-C-18	SH-18-SS	1.1250	1-3/4	0.625	5/16-18x5/16
SH-C-19	SH-19-SS	1.1875	2	0.688	3/8-16x3/8
SH-C-20	SH-20-SS	1.2500	2	0.688	3/8-16x3/8
SH-C-21	SH-21-SS	1.3125	2-1/8	0.688	3/8-16x3/8
SH-C-22	SH-22-SS	1.3750	2-1/8	0.750	3/8-16x3/8
SH-C-23		1.4375	2-1/4	0.750	3/8-16X3/8
SH-C-24	SH-24-SS	1.5000	2-1/4	0.750	3/8-16x3/8
SH-C-26	SH-26-SS	1.6250	2-1/2	0.813	3/8-16x3/8
SH-C-28	SH-28-SS	1.7500	2-3/4	0.875	1/2-13x1/2
SH-C-31		1.9375	3	0.875	1/2-13x1/2
SH-C-32	SH-32-SS	2.0000	3	0.875	1/2-13x1/2

[www.dunlopbt.com](http://www.dunlopbt.com)

“We are proud to be a European manufacturer; it is a privilege to supply our products to some of the world’s most prestigious original equipment manufacturers in the Agricultural, Automotive, Construction, Industrial and Motor Sport sectors”.

“Our distributor network is vital to the continued global growth of the DUNLOP brand and our valued distributor partners form the perfect link between manufacturer and end user”.

“Our commitment to our staff, our customers and the environment is of paramount importance to our company, we will continue to develop our organisational skills to further enhance our company’s potential, to engage in sustainable practices and anticipate the needs and expectations of our customers”.

“We **love** our products”.

Ray Mifsud, *Managing Director.*



**#WeLoveOurProducts**





[www.rodavigo.net](http://www.rodavigo.net)

+34 986 288118  
Servicio de Att. al Cliente



**TRANSMISSIONS**

DUNLOP BTL Ltd, MPT House, Brunswick Road, Cobbs Wood Industrial Estate, Ashford, Kent TN23 1EL, UK  
T: +44 (0)1233 663340 • F: +44 (0)1233 664440 • E: [sales@dunlopctl.com](mailto:sales@dunlopctl.com) • W: [www.dunlopctl.com](http://www.dunlopctl.com)

DUNLOP™ and the Flying D device™ are used under licence by DUNLOP BTL Ltd.

Polígono Industrial O Rebullón s/n. 36416 - Mos - España - [rodavigo@rodavigo.com](mailto:rodavigo@rodavigo.com)