

PILOT BORE SPROCKETS - STAINLESS STEEL

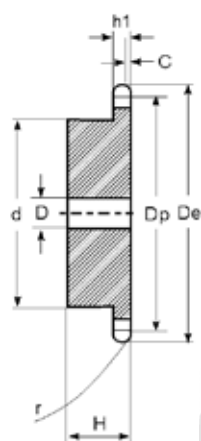


PILOT BORE SPROCKETS - STAINLESS STEEL

Description

Stainless Steel pilot bore sprockets are manufactured to internationally recognised standards DIN8187-ISO/R 606 and are produced from 304L stainless steel.

Conveniently stocked with a minimum pilot bore (dimension 'D') they can be machined to suit any suitable mounting requirement. Available from stock to suit British standard roller chains from 06B (3/8" pitch) up to 16B (1" pitch) sizes in Simplex (single) row of teeth.

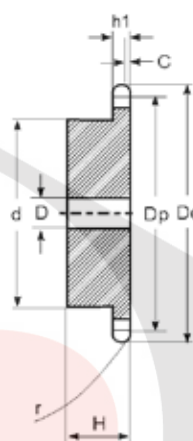


06B Chain
3/8" x 7/32"

Pitch: 9.525mm
Internal width: 5.72mm
Roller dia: 6.35mm

Sprocket

Tooth radius: 10mm
Radius width C: 1mm
Tooth width h1: 5.3mm



08B Chain
1/2" x 5/16"

Pitch: 12.7mm
Internal width: 7.75mm
Roller dia: 8.51mm

Sprocket

Tooth radius r: 13mm
Radius width C: 1.3mm
Tooth width h1: 7.2mm

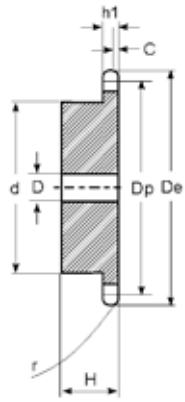
06B-1 (3SR) SS

08B-1 (4SR) SS

Teeth	De	Dp	Part No.	d	D	H
12	40.00	36.80	3SR12-SS	25	8	25
13	43.00	39.80	3SR13-SS	28	10	25
14	46.30	42.80	3SR14-SS	31	10	25
15	49.30	45.81	3SR15-SS	34	10	25
16	52.30	48.82	3SR16-SS	37	10	28
17	55.30	51.83	3SR17-SS	40	10	28
18	58.30	54.85	3SR18-SS	43	10	28
19	61.30	57.87	3SR19-SS	45	10	28
20	64.30	60.89	3SR20-SS	46	10	28
21	68.00	63.91	3SR21-SS	48	12	28
22	71.00	66.93	3SR22-SS	50	12	28
23	73.50	69.95	3SR23-SS	52	12	28
24	77.00	72.97	3SR24-SS	54	12	28
25	80.00	76.00	3SR25-SS	57	12	28
26	83.00	79.02	3SR26-SS	60	12	28
27	86.00	82.04	3SR27-SS	60	12	28
28	89.00	85.07	3SR28-SS	60	12	28
29	92.00	88.09	3SR29-SS	60	12	28
30	94.70	91.12	3SR30-SS	60	12	28

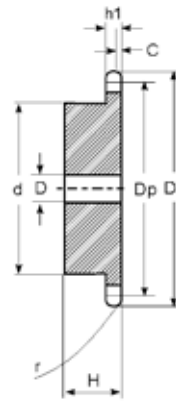
Teeth	De	Dp	Part No.	d	D	H
12	53.00	49.07	4SR12-SS	33	10	25
13	57.40	53.06	4SR13-SS	37	10	25
14	61.80	57.07	4SR14-SS	41	10	25
15	65.50	61.09	4SR15-SS	45	10	25
16	69.50	65.10	4SR16-SS	50	12	28
17	73.60	69.11	4SR17-SS	52	12	28
18	77.80	73.14	4SR18-SS	56	12	28
19	81.70	77.16	4SR19-SS	60	12	28
20	85.80	81.19	4SR20-SS	64	12	28
21	89.70	85.22	4SR21-SS	68	12	28
22	93.80	89.24	4SR22-SS	70	12	28
23	98.20	93.27	4SR23-SS	70	14	28
24	101.80	97.29	4SR24-SS	70	14	28
25	105.80	101.33	4SR25-SS	70	14	28
26	110.00	105.36	4SR26-SS	70	16	28
27	114.00	109.40	4SR27-SS	70	16	28
28	118.00	113.42	4SR28-SS	70	16	28
29	122.00	117.46	4SR29-SS	80	16	28
30	126.10	121.50	4SR30-SS	80	16	28

PILOT BORE SPROCKETS - STAINLESS STEEL



10B Chain Pitch: 15.875mm
5/8" x 3/8" Internal width: 9.65mm
 Roller dia: 10.16mm

Sprocket Tooth radius r: 16mm
 Radius width C: 1.6mm
 Tooth width h1: 9.1mm



12B Chain Pitch: 19.05mm
3/4" x 7/16" Internal width: 11.68mm
 Roller dia: 12.07mm

Sprocket Tooth radius r: 19mm
 Radius width C: 2mm
 Tooth width h1: 11.1mm

10B-1 (5SR) SS

12B-1 (6SR) SS

Teeth	De	Dp	Part No.	d	D	H
12	68.00	61.34	5SR12-SS	42	12	30
13	73.00	66.32	5SR13-SS	47	12	30
14	78.00	71.34	5SR14-SS	52	12	30
15	83.00	76.36	5SR15-SS	57	12	30
16	88.00	81.37	5SR16-SS	60	12	30
17	93.00	86.39	5SR17-SS	60	12	30
18	98.30	91.42	5SR18-SS	70	14	30
19	103.30	96.45	5SR19-SS	70	14	30
20	108.40	101.49	5SR20-SS	75	14	30
21	113.40	106.52	5SR21-SS	75	16	30
22	118.00	111.55	5SR22-SS	80	16	30
23	123.40	116.58	5SR23-SS	80	16	30
24	128.30	121.62	5SR24-SS	80	16	30
25	134.00	126.66	5SR25-SS	80	16	30
26	139.00	131.70	5SR26-SS	85	20	35
27	144.00	136.75	5SR27-SS	85	20	35
28	148.70	141.78	5SR28-SS	90	20	35
29	153.80	146.83	5SR29-SS	90	20	35
30	158.80	151.87	5SR30-SS	90	20	35

Teeth	De	Dp	Part No.	d	D	H
12	81.5	73.6	6SR12-SS	52	14	35
13	87.5	79.6	6SR13-SS	58	14	35
14	93.6	85.6	6SR14-SS	64	14	35
15	99.8	91.6	6SR15-SS	70	14	35
16	105.5	97.7	6SR16-SS	75	16	35
17	111.5	103.7	6SR17-SS	80	16	35
18	118.0	109.7	6SR18-SS	80	16	35
19	124.2	115.8	6SR19-SS	80	16	35
20	129.7	121.8	6SR20-SS	80	16	35
21	136.0	127.8	6SR21-SS	90	20	40
22	141.8	133.9	6SR22-SS	90	20	40
23	149.0	139.9	6SR23-SS	90	20	40
24	153.9	145.9	6SR24-SS	90	20	40
25	160.0	152.0	6SR25-SS	90	20	40
26	165.9	158.0	6SR26-SS	95	20	40
27	172.3	164.1	6SR27-SS	95	20	40
28	178.0	170.1	6SR28-SS	95	20	40
29	184.1	176.2	6SR29-SS	95	20	40
30	190.5	182.3	6SR30-SS	95	20	40

16B-1 (8SR) SS

16B Chain Pitch : 25.4mm
1" x 17.02mm Internal width: 17.02mm
 Roller dia: 15.88mm

Sprocket Tooth radius r: 26mm
 Radius width C: 2.5mm
 Tooth width h1: 16.2mm

Teeth	De	Dp	Part No.	d	D	H
8	77.00	66.37	8SR08-SS	42	16	35
9	85.00	74.27	8SR09-SS	50	16	35
10	93.00	82.19	8SR10-SS	55	16	35
11	99.50	90.14	8SR11-SS	61	16	40
12	109.00	98.14	8SR12-SS	69	16	40
13	117.00	106.12	8SR13-SS	78	16	40
14	125.00	114.15	8SR14-SS	84	16	40
15	133.00	122.17	8SR15-SS	92	16	40
16	141.00	130.20	8SR16-SS	100	20	45
17	149.00	138.22	8SR17-SS	100	20	45
18	157.00	146.28	8SR18-SS	100	20	45
19	165.20	154.33	8SR19-SS	100	20	45

Teeth	De	Dp	Part No.	d	D	H
19	165.20	154.33	8SR19-SS	100	20	45
20	173.20	162.38	8SR20-SS	100	20	45
21	181.20	170.43	8SR21-SS	110	20	50
22	189.30	178.48	8SR22-SS	110	20	50
23	197.50	186.53	8SR23-SS	110	20	50
24	205.50	194.59	8SR24-SS	110	20	50
25	213.50	202.66	8SR25-SS	110	20	50
26	221.60	210.72	8SR26-SS	120	20	50
27	229.60	218.79	8SR27-SS	120	20	50
28	237.70	226.85	8SR28-SS	120	20	50
29	245.80	234.92	8SR29-SS	120	20	50
30	254.00	243.00	8SR30-SS	120	20	50