









FEMALE ROD ENDS

-  English
-  Español
-  Italiano
-  Deutsch
-  Français
-  Nederlands
-  Polskie

**FP series** 40

Serie FP • Serie FP • FP-Serie

Série FP • FP-serie • seria FP

**FH series** 44

Serie FH • Serie FH • FH-Serie

Série FH • FH-serie • seria FH

**RF series** 47

Serie RF • Serie RF • RF-Serie

Série RF • RF-serie • seria RF

**FB series** 49

Serie FB • Serie FB • FB-Serie

Série FB • FB-serie • seria FB

**FS series** 56

Serie FS • Serie FS • FS-Serie

Série FS • FS-serie • seria FS

**FX series** 58

Serie FX • Serie FX • FX-Serie

Série FX • FX-serie • seria FX

**AL series** 60

Serie AL • Serie AL • AL-Serie

Série AL • AL-serie • seria AL

**DB series** 62

Serie DB • Serie DB • DB-Serie

Série DB • DB-serie • seria DB

FEMALE ROD ENDS



**AL SERIES**

**Description:**

AL-Series is our 3-piece aluminium light weight range of self-lubricating general purpose female rod ends suitable for light industrial/mechanical load applications requiring low friction, with good wear resistance and available in metric bore and thread sizes. They have excellent moisture resistance and require no maintenance.

**Material Specifications:**

Housing: Aluminium A6026, black anodised. Race: GR-nylon LV-3H. Ball: Bearing steel 100Cr6, hardened and electroless nickel plated.

**Features**

Metric bore & thread sizes  
Low friction  
Self-lubricating  
Good wear resistance  
Excellent moisture resistance  
No maintenance  
Light weight

**Possible Applications**

Light industrial/mechanical applications  
Weight restricted applications  
Linear movement sensors

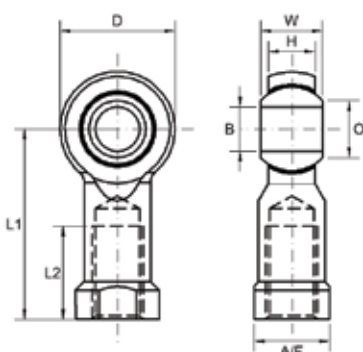
**Temperature Range**

-30°C to +170°C

**Specification**

ELV & RoHS compliant

**AL SERIES: MAINTENANCE FREE ROD ENDS WITH FEMALE THREAD (METRIC)**



**Housing:** Aluminium A6026, Black Anodised

**Race:** GR-Nylon, LV-3H

**Ball:** Bearing Steel 100Cr6, Hardened and Electro-less Nickel Plated

**Specification:** ELV and RoHS Compliant



Part No. Right Hand	Part No. Left Hand	Bore Size	Thread	W	H	D	L1	L2	O	AF	Static Load Rating Radial (Newtons)
AL-SA-116	AL-SA-116LH	3	M3X0.50	6	4.50	12	13.5	6.0	5.2	6.0	3,040
AL-SA-176	AL-SA-176LH	3	M3X0.50	6	4.50	12	13.5	6.0	5.2	7.0	3,040
AL-SA-106	AL-SA-106LH	3	M3X0.50	6	4.50	12	18.5	7.0	5.2	6.5	3,040
AL-SA-032	AL-SA-032LH	3	M3X0.50	6	4.50	12	18.5	7.0	5.2	6.5	3,040
AL-SA-033	AL-SA-033LH	3	M3X0.50	6	4.50	12	21.0	9.0	5.2	6.5	3,040
AL-SA-127	AL-SA-127LH	3	M4X0.70	6	4.50	12	13.5	6.0	5.2	7.0	3,040
AL-SA-091	AL-SA-091LH	3	M4X0.70	6	4.50	12	13.5	6.0	5.2	6.0	3,040
AL-SA-090	AL-SA-090LH	3	M4X0.70	6	4.50	12	19.5	6.0	5.2	6.0	3,040
AL-SA-009	AL-SA-009LH	5	M4X0.70	8	6.00	16	27.0	14.0	9.0	9.0	5,340
AL-SA-178	AL-SA-178LH	5	M4X0.70	8	6.00	16	16.2	8.0	9.0		5,340
AL-SA-135	AL-SA-135LH	5	M4X0.70	8	6.00	16	18.0	6.0	9.0	9.0	5,340
AL-SA-111	AL-SA-111LH	5	M4X0.70	8	6.00	16	25.0	11.5	9.0	9.0	5,340
AL-SA-177	AL-SA-177LH	5	M4X0.70	8	6.00	16	27.0	17.5	9.0	9.0	5,340
AL-SA-010	AL-SA-010LH	5	M5X0.80	8	6.00	16	27.0	14.0	9.0	9.0	5,340
AL-SA-019	AL-SA-019LH	5	M5X0.80	8	6.00	16	18.0	6.5	9.0	9.0	5,340
AL-SA-201	AL-SA-201LH	5	M6X1.00	8	6.00	16	27.0	13.5	9.0	9.0	5,340
AL-SA-080		6	M6X1.00	9	6.75	18	30.0	13.5	9.3	11.0	7,720
AL-SA-081		6	M6X1.00	9	6.75	18	30.0	13.5	9.3	11.0	7,720
AL-SA-082	AL-SA-082LH	8	M8X1.25	12	9.00	22	36.0	16.5	10.4	14.0	7,720

