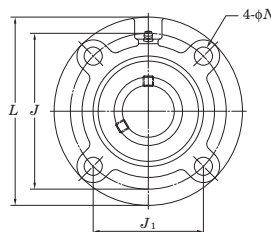
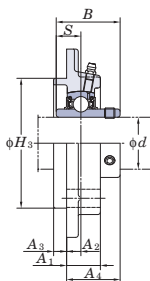




4-Bolt Flange Cartridge Units

UCFC
Cylindrical bore (with set screws)
d 12 ~ 50 mm

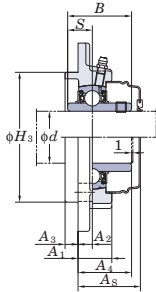


Shaft Dia. mm inch	Dimensions inch mm											Bolt Size inch mm	Standard		
	L	H ₃	J	J ₁	N	A ₁	A ₂	A ₃	A ₄	B	S		Unit No.	Housing No.	Bearing No.
12	1/2												3/8	FC204	UC201 UC201-8 UC202 UC202-10 UC203 UC204-12 UC204
15	5/8	3 15/16	2.4409	3 5/64	2 11/64	15/32	13/16	25/64	13/64	1 1/8	1.220	0.500	M10		
17	3/4	100	62	78	55.1	12	20.5	10	5	28.3	31	12.7	M10		
20															
25	7/8	4 17/32	2.7559	3 35/64	2 1/2	15/32	13/16	25/64	15/64	1 3/16	1.343	0.563	3/8	FC205	UC205-14 UC205-15 UC205 UC205-16
	15/16	115	70	90	63.6	12	21	10	6	29.8	34.1	14.3	M10		
30	1	4 3/8	2.9921	3 5/8	2 9/16	3/8	15/16	25/64	15/64	1 9/32	1.500	0.626	5/16	FCX05	UCX05 UCX05-16
	1 1/8	111	76	92	65	9.5	24	10	6	32.2	38.1	15.9	M8		
30	1 1/8	4 29/32	3.1496	3 15/16	2 25/32	15/32	29/32	25/64	5/16	1 9/32	1.500	0.626	3/8	FC206	UC206-18 UC206 UC206-19 UC206-20
	1 3/16	125	80	100	70.7	12	23	10	8	32.2	38.1	15.9	M10		
35	1 1/4	5	3.3465	4 9/64	2 59/64	15/32	7/8	5/16	3/8	1 5/16	1.689	0.689	3/8	FCX06	UCX06 UCX06-19 UCX06-20
	1 5/16	127	85	105	74.2	12	22.5	8	9.5	33.4	42.9	17.5	M10		
35	1 3/8	5 5/16	3.5433	4 21/64	3 1/16	35/64	1 1/32	7/16	5/16	1 7/16	1.689	0.689	7/16	FC207	UC207-20 UC207-21 UC207-22 UC207 UC207-23
	1 7/16	135	90	110	77.8	14	26	11	8	36.4	42.9	17.5	M12		
40	1 3/8	5 1/4	3.6220	4 3/8	3 3/32	15/32	1 1/32	23/64	7/16	1 17/32	1.937	0.748	3/8	FCX07	UCX07-22 UCX07 UCX07-23
	1 7/16	133	92	111	78.5	12	26	9	11	39.2	49.2	19	M10		
40	1 1/2	5 23/32	3.9370	4 23/32	3 11/32	35/64	1 1/32	7/16	25/64	1 5/8	1.937	0.748	7/16	FC208	UC208-24 UC208-25 UC208
	1 9/16	145	100	120	84.8	14	26	11	10	41.2	49.2	19	M12		
45	1 1/2	5 1/4	3.6220	4 3/8	3 3/32	15/32	1 1/32	23/64	7/16	1 17/32	1.937	0.748	3/8	FCX08	UCX08-24 UCX08
	1 5/8	133	92	111	78.5	12	26	9	11	39.2	49.2	19	M10		
45	1 5/8	6 5/16	4.1339	5 13/64	4 43/64	5/8	1 1/32	25/64	15/32	1 19/32	1.937	0.748	1/2	FC209	UC209-26 UC209-27 UC209-28 UC209
	1 11/16	160	105	132	93.3	16	26	10	12	40.2	49.2	19	M14		
50	1 3/4	6 3/32	4.2520	5 1/8	3 5/8	35/64	31/32	5/16	15/32	1 19/32	2.031	0.748	7/16	FCX09	UCX09-27 UCX09-28 UCX09
	1 11/16	155	108	130	91.9	14	25	8	12	40.6	51.6	19	M12		
50	1 7/8	6 1/2	4.3307	5 7/16	3 27/32	5/8	1 3/32	25/64	15/32	1 11/16	2.031	0.748	1/2	FC210	UC210-30 UC210-31 UC210 UC210-32
	1 15/16	165	110	138	97.6	16	28	10	12	42.6	51.6	19	M14		
50	2	6 3/8	4.6457	5 23/64	3 25/32	35/64	31/32	9/32	5/8	1 19/32	2.189	0.874	7/16	FCX10	UCX10-31 UCX10 UCX10-32
	1 15/16	162	118	136	96.2	14	25	7	16	40.4	55.6	22.2	M12		

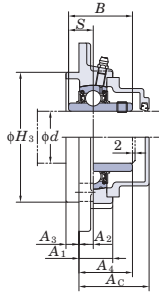
Remarks 1. In Part No. of unit and units with covers, fitting codes follow bore diameter numbers. (See Table 10.5 in P.62.)
2. Part No. of applicable grease fittings are shown below.
A-1/4-28UNF 201~210, X05~X09
A-R1/8..... 211~218, X10~X20



With Pressed Steel Cover



With Cast Iron Cover



Variations of tolerance of spigot joint outside diameter (ΔH_{3s}), variations of tolerance of distance from mounting surface to center of spherical bore (ΔA_{2s}), tolerance of position of bolt hole (X), and tolerance of circumferential runout of spigot joint (Y)

Housing No.		ΔH_{3s}	ΔA_{2s}	X	Y	Unit: mm
FC204~FC206	FCX05	0	±0.5	0.7	0.2	
		-0.046				
FC207~FC210	FCX06~FCX10	0	±0.8	1	0.3	
		-0.054				
FC211~FC217	FCX11~FCX15	0	±0.8	1	0.3	
		-0.063				
FC218	FCX16~FCX18	0	±0.8	1	0.4	
		-0.072				

Variations of tolerance of bolt hole diameter (ΔH_{5s})

Housing No.	ΔH_{5s}	Unit: mm
FC204~FC218 FCX05~FCX20	±0.2	

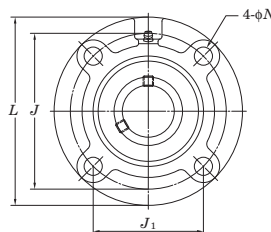
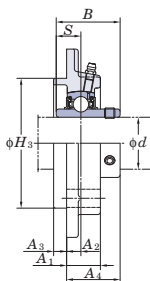
Mass	Basic Load Ratings		Factor	With Pressed Steel Cover		Dimension mm	inch	Mass	With Cast Iron Cover		Dimension mm	inch	Mass	
	kg	C_r		C_{0r}	Open Type				Closed Type	Unit No.				Open Type
0.78	12.8	6.65	13.2	UCFC201C	UCFC201D	32.5	1 9/32	0.78	-	-	-	-	-	
0.78				-	-	-	-	-	-	-	-	-	-	-
0.76				UCFC202C	UCFC202D	32.5	1 9/32	0.76	-	-	-	-	-	-
0.76				-	-	-	-	-	-	-	-	-	-	-
0.75				UCFC203C	UCFC203D	32.5	1 9/32	0.75	-	-	-	-	-	-
0.75				-	-	-	-	-	-	-	-	-	-	-
0.73	-	-	-	UCFC204C	UCFC204D	32.5	1 9/32	0.73	UCFC204FC	UCFC204FD	41	1 17/32	0.84	
0.95	14.0	7.85	13.9	-	-	-	-	-	-	-	-	-	-	
0.95				-	-	-	-	-	-	-	-	-	-	
0.95				UCFC205C	UCFC205D	34.5	1 11/32	0.95	UCFC205FC	UCFC205FD	43	1 21/32	1.1	
0.95				-	-	-	-	-	-	-	-	-	-	
1.2	19.5	11.3	13.9	UCFCX05C	UCFCX05D	36.5	1 7/16	1.2	-	-	-	-	-	
1.2				-	-	-	-	-	-	-	-	-	-	
1.3	19.5	11.3	13.9	-	-	-	-	-	-	-	-	-	-	
1.3				UCFC206C	UCFC206D	36.5	1 7/16	1.3	UCFC206FC	UCFC206FD	45	1 25/32	1.6	
1.3				-	-	-	-	-	-	-	-	-	-	
1.3				-	-	-	-	-	-	-	-	-	-	
1.5	25.7	15.4	13.9	UCFCX06C	UCFCX06D	38	1 1/2	1.5	-	-	-	-	-	
1.5				-	-	-	-	-	-	-	-	-		
1.5				-	-	-	-	-	-	-	-	-		
1.7	25.7	15.4	13.9	-	-	-	-	-	-	-	-	-	-	
1.7				-	-	-	-	-	-	-	-	-		
1.7				UCFC207C	UCFC207D	41	1 5/8	1.7	UCFC207FC	UCFC207FD	50	1 31/32	2.1	
1.7				-	-	-	-	-	-	-	-	-		
1.7				-	-	-	-	-	-	-	-	-		
1.9	29.1	17.8	14.0	-	-	-	-	-	-	-	-	-	-	
1.9				UCFCX07C	UCFCX07D	43.5	1 23/32	1.9	-	-	-	-		
1.9				-	-	-	-	-	-	-	-	-		
2.0	29.1	17.8	14.0	-	-	-	-	-	-	-	-	-	-	
2.0				UCFC208C	UCFC208D	45.5	1 25/32	2.0	UCFC208FC	UCFC208FD	54	2 1/8	2.4	
2.0				-	-	-	-	-	-	-	-	-		
2.0				UCFCX08C	UCFCX08D	43.5	1 23/32	2.0	-	-	-	-		
2.6	34.1	21.3	14.0	-	-	-	-	-	-	-	-	-	-	
2.6				-	-	-	-	-	-	-	-	-		
2.6				UCFC209C	UCFC209D	44.5	1 3/4	2.6	UCFC209FC	UCFC209FD	54	2 1/8	3.0	
2.6				-	-	-	-	-	-	-	-	-		
2.6				UCFCX09C	UCFCX09D	45	1 25/32	2.6	-	-	-	-		
2.9	35.1	23.3	14.4	-	-	-	-	-	-	-	-	-	-	
2.9				UCFC210C	UCFC210D	47	1 27/32	2.9	UCFC210FC	UCFC210FD	58.5	2 5/16	3.4	
2.9				-	-	-	-	-	-	-	-	-		
2.9				-	-	-	-	-	-	-	-	-		
3.2	43.4	29.4	14.4	-	-	-	-	-	-	-	-	-	-	
3.2				UCFCX10C	UCFCX10D	45	1 25/32	3.2	-	-	-	-		
3.2	-	-	-	-	-	-	-	-	-	-	-			

- As for the triple seal type product (from 201 to 205 are the double seal type products), suffix code L3 (L2) follows the Part No. of unit or bearing. (Example of Part No. : UCFC206JL3, UC206L3)
- For the dimensions and forms of applicable bearings, see the dimensional tables of ball bearing for unit.
- Housings of nodular graphite cast iron are also available.



4-Bolt Flange Cartridge Units

UCFC
Cylindrical bore (with set screws)
d 55 ~ 100 mm

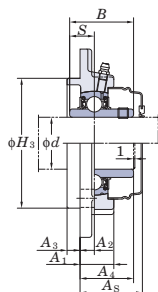


Shaft Dia. mm inch	Dimensions inch mm											Bolt Size inch mm	Standard			
	L	H ₃	J	J ₁	N	A ₁	A ₂	A ₃	A ₄	B	S		Unit No.	Housing No.	Bearing No.	
d																
55	2 2 1/8	7 9/32	4.9213	5 29/32	4 11/64	3/4	1 7/32	33/64	15/32	1 13/16	2.189	0.874	5/8 M16	UCFC211-32 UCFC211-34 UCFC211 UCFC211-35	FC211	UC211-32 UC211-34 UC211 UC211-35
	2 3/16	185	125	150	106.1	19	31	13	12	46.4	55.6	22.2				
	2 3/8	7 3/32	5	5 63/64	4 15/64	5/8	1 1/32	5/32	55/64	1 23/32	2.563	1.000	1/2 M14			
60	2 1/4	7 11/16	5.3150	6 19/64	4 29/64	3/4	1 13/32	43/64	15/32	2 7/32	2.563	1.000	5/8 M16	UCFC212-36 UCFC212 UCFC212-38 UCFC212-39	FC212	UC212-36 UC212 UC212-38 UC212-39
	2 3/8	195	135	160	113.1	19	36	17	12	56.7	65.1	25.4				
	2 7/16	7 5/8	5.5118	6 1/2	4 19/32	5/8	1 5/16	7/16	25/32	2	2.563	1.000	1/2 M14			
65	2 1/2	8 1/16	5.7087	6 11/16	4 47/64	3/4	1 13/32	5/8	35/64	2 3/16	2.563	1.000	5/8 M16	UCFC213-40 UCFC213 UCFCX13-40 UCFCX13	FC213	UC213-40 UC213 UCX13-40 UCX13
	2 1/4	205	145	170	120.2	19	36	16	14	55.7	65.1	25.4				
	2 1/2	7 5/8	5.5118	6 1/2	4 19/32	5/8	1 5/16	7/16	25/32	2 3/16	2.937	1.189	1/2 M14			
70	2 3/4	8 15/32	5.9055	6 3/32	4 59/64	3/4	1 9/16	43/64	35/64	2 13/32	2.937	1.189	5/8 M16	UCFC214-44 UCFC214 UCFCX14-44 UCFCX14	FC214	UC214-44 UC214 UCX14-44 UCX14
	2 3/8	215	150	177	125.1	19	40	17	14	61.4	74.6	30.2				
	2 3/4	8 3/4	6.4567	7 31/64	5 9/32	3/4	1 13/32	35/64	25/32	2 5/16	3.063	1.331	5/8 M16			
75	2 15/16	8 21/32	6.2992	7 1/4	5 1/8	3/4	1 9/16	45/64	5/8	2 15/32	3.063	1.331	5/8 M16	UCFC215-47 UCFC215 UCFC215-48	FC215	UC215-47 UC215 UC215-48
	3	220	160	184	130.1	19	40	18	16	62.5	77.8	33.3				
	2 15/16	8 3/4	6.4567	7 31/64	5 9/32	3/4	1 3/8	15/32	55/64	2 13/32	3.252	1.311	5/8 M16			
80	3 1/8	9 7/16	6.6929	7 7/8	5 9/16	29/32	1 31/32	45/64	5/8	2 21/32	3.252	1.311	3/4 M20	UCFC216-50 UCFC216 UCFCX16	FC216	UC216-50 UC216 UCX16
	240	170	200	141.4	23	42	18	16	67.3	82.6	33.3					
	10 1/4	7.3228	8 5/8	6 3/32	29/32	1 13/32	25/64	63/64	2 7/16	3.374	1.343	3/4 M20	UCFCX16			
85	3 1/4	9 27/32	7.0866	8 3/16	5 51/64	29/32	1 25/32	45/64	45/64	2 3/4	3.374	1.343	3/4 M20	UCFC217-52 UCFC217 UCFCX17-55	FC217	UC217-52 UC217 UCX17-55
	250	180	208	147.1	23	45	18	18	69.6	85.7	34.1					
	10 1/4	7.3228	8 5/8	6 3/32	29/32	1 13/32	25/64	63/64	2 5/8	3.780	1.563	3/4 M20	UCFCX17			
90	3 7/16	260	186	219	154.8	23	36	10	25	66.3	96	39.7	3/4 M20	UCFCX17-55	FCX17	UCX17-55
	3 1/2	10 7/16	7.4803	8 21/32	6 1/8	29/32	1 31/32	55/64	45/64	3 3/32	3.780	1.563	3/4 M20	UCFC218-56 UCFC218 UCFCX18	FC218	UC218-56 UC218 UCX18
	265	190	220	155.5	23	50	22	18	78.3	96	39.7					
10 1/4	7.3228	8 5/8	6 3/32	29/32	1 11/16	15/32	1 7/64	2 7/8	4.094	1.689	3/4 M20	UCFCX18	FCX18			
100	3 15/16	10 7/8	8.1102	9 3/8	6 5/8	29/32	2 19/32	55/64	1 7/64	3 9/16	4.626	1.937	3/4 M20	UCFCX20 UCFCX20-63 UCFCX20-64	FCX20	UCX20 UCX20-63 UCX20-64
	4	276	206	238	168.3	23	66	22	28	90.3	117.5	49.2				

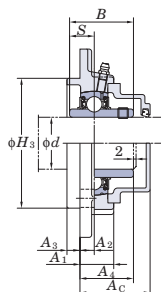
Remarks
 1. In Part No. of unit and units with covers, fitting codes follow bore diameter numbers. (See Table 10.5 in P.62.)
 2. Part No. of applicable grease fittings are shown below.
 A-1/4-28UNF 201~210, X05~X09
 A-R1/8 211~218, X10~X20



With Pressed Steel Cover



With Cast Iron Cover



Variations of tolerance of spigot joint outside diameter (ΔH_{3s}), variations of tolerance of distance from mounting surface to center of spherical bore (ΔA_{2s}), tolerance of position of bolt hole (X), and tolerance of circumferential runout of spigot joint (Y)

Housing No.		ΔH_{3s}	ΔA_{2s}	X	Y	Unit: mm
FC204~FC206	FCX05	0 -0.046	±0.5	0.7	0.2	
FC207~FC210	FCX06~FCX10	0 -0.054				
FC211~FC217	FCX11~FCX15	0 -0.063	±0.8	1	0.3	
FC218	FCX16~FCX18 FCX20	0 -0.072				

Variations of tolerance of bolt hole diameter (Δh_{3s})

Housing No.	Δh_{3s}	Unit: mm
FC204~FC218 FCX05~FCX20	±0.2	

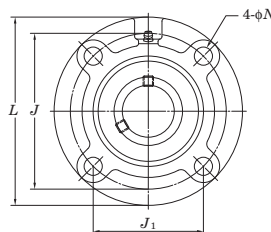
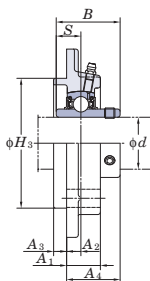
Mass	Basic Load Ratings		Factor	With Pressed Steel Cover			With Cast Iron Cover						
	C_r	C_{0r}		Unit No.	Dimension	Mass	Unit No.	Dimension	Mass				
kg	kN	kN	f_0	Open Type	Closed Type	mm	inch	kg	Open Type	Closed Type	mm	inch	kg
						A_s					A_e		
4.2				-	-	-	-	-	-	-	-	-	-
4.2	43.4	29.4	14.4	-	-	-	-	-	-	-	-	-	-
4.2				UCFC211C	UCFC211D	51	2	4.2	UCFC211FC	UCFC211FD	62.5	2 ¹⁵ / ₃₂	4.8
4.2				-	-	-	-	-	-	-	-	-	-
4.3				UCFCX11C	UCFCX11D	48.5	1 ²⁹ / ₃₂	4.3	-	-	-	-	-
4.3	52.4	36.2	14.4	-	-	-	-	-	-	-	-	-	-
4.3				-	-	-	-	-	-	-	-	-	-
5.0				-	-	-	-	-	-	-	-	-	-
5.0	52.4	36.2	14.4	UCFC212C	UCFC212D	61.5	2 ¹³ / ₃₂	5.0	UCFC212FC	UCFC212FD	74	2 ²⁹ / ₃₂	5.8
5.0				-	-	-	-	-	-	-	-	-	-
5.0				-	-	-	-	-	-	-	-	-	-
5.3				UCFCX12C	UCFCX12D	55.5	2 ³ / ₁₆	5.3	-	-	-	-	-
5.3	57.2	40.1	14.4	-	-	-	-	-	-	-	-	-	-
5.6				-	-	-	-	-	-	-	-	-	-
5.6	57.2	40.1	14.4	UCFC213C	UCFC213D	60.5	2 ³ / ₈	5.6	UCFC213FC	UCFC213FD	73	2 ⁷ / ₈	6.4
5.7				-	-	-	-	-	-	-	-	-	-
5.7	62.2	44.1	14.5	UCFCX13C	UCFCX13D	60.5	2 ³ / ₈	5.7	-	-	-	-	-
6.8				-	-	-	-	-	-	-	-	-	-
6.8	62.2	44.1	14.5	UCFC214C	UCFC214D	66.5	2 ⁵ / ₈	6.8	UCFC214FC	UCFC214FD	79	3 ¹ / ₈	7.7
7.3				-	-	-	-	-	-	-	-	-	-
7.3	67.4	48.3	14.5	UCFCX14C	UCFCX14D	63.5	2 ¹ / ₂	7.3	-	-	-	-	-
7.2				-	-	-	-	-	-	-	-	-	-
7.2	67.4	48.3	14.5	UCFC215C	UCFC215D	67.5	2 ²¹ / ₃₂	7.2	UCFC215FC	UCFC215FD	80	3 ⁵ / ₃₂	8.2
7.2				-	-	-	-	-	-	-	-	-	-
8.0				-	-	-	-	-	-	-	-	-	-
8.0	72.7	53.0	14.6	UCFCX15C	UCFCX15D	66.5	2 ⁵ / ₈	8.0	-	-	-	-	-
8.0				-	-	-	-	-	-	-	-	-	-
8.7				-	-	-	-	-	-	-	-	-	-
8.7	72.7	53.0	14.6	UCFC216C	UCFC216D	72.5	2 ²⁷ / ₃₂	8.7	UCFC216FC	UCFC216FD	87	3 ⁷ / ₁₆	9.9
11.3				UCFCX16C	UCFCX16D	66.5	2 ⁵ / ₈	11.3	-	-	-	-	-
10.3				-	-	-	-	-	-	-	-	-	-
10.3	84.0	61.9	14.5	UCFC217C	UCFC217D	74.5	2 ¹⁵ / ₁₆	10.3	UCFC217FC	UCFC217FD	89	3 ¹ / ₂	11.7
12.9				UCFCX17C	UCFCX17D	71.5	2 ¹³ / ₁₆	12.9	-	-	-	-	-
12.9	96.1	71.5	14.5	-	-	-	-	-	-	-	-	-	-
13.3				-	-	-	-	-	-	-	-	-	-
13.3	96.1	71.5	14.5	UCFC218C	UCFC218D	83.5	3 ⁹ / ₃₂	13.3	UCFC218FC	UCFC218FD	98	3 ²⁷ / ₃₂	14.8
13.5				-	-	-	-	-	UCFCX18C	UCFCX18C	92	3 ⁵ / ₈	15.4
18.2				-	-	-	-	-	UCFCX20C	UCFCX20D	116	4 ⁹ / ₁₆	20.7
18.2	133	105	14.4	-	-	-	-	-	-	-	-	-	-
18.2				-	-	-	-	-	-	-	-	-	-

- As for the triple seal type product (from 201 to 205 are the double seal type products), suffix code L3 (L2) follows the Part No. of unit or bearing. (Example of Part No. : UCFC206JL3, UC206L3)
- For the dimensions and forms of applicable bearings, see the dimensional tables of ball bearing for unit.
- Housings of nodular graphite cast iron are also available.



4-Bolt Flange Cartridge Units

UCFCX-E
Cylindrical bore (with set screws)
d 25 ~ 100 mm



Shaft Dia.		Dimensions											Bolt Size	Unit No.	Housing No.	Bearing No.
mm	inch	inch mm											inch mm			
<i>d</i>		<i>L</i>	<i>H</i> ₃	<i>J</i>	<i>J</i> ₁	<i>N</i>	<i>A</i> ₁	<i>A</i> ₂	<i>A</i> ₃	<i>A</i> ₄	<i>B</i>	<i>S</i>				
25	1	4 3/8	3.000	3 5/8	2 9/16	3/8	15/16	25/64	15/64	1 9/32	1.500	0.626	5/16	UCFCX05E	FCX05E	UCX05
		111	76.2	92	65	9.5	24	10	6	32.2	38.1	15.9	M8	UCFCX05-16E		UCX05-16
30	1 3/16	5	3.375	4 9/64	2 59/64	15/32	7/8	5/16	3/8	1 5/16	1.689	0.689	3/8	UCFCX06E	FCX06E	UCX06
	1 1/4	127	85.725	105	74.2	12	22.5	8	9.5	33.4	42.9	17.5	M10	UCFCX06-19E		UCX06-19
35	1 3/8	5 1/4	3.625	4 3/8	3 3/32	15/32	1 1/32	23/64	7/16	1 17/32	1.937	0.748	3/8	UCFCX07E	FCX07E	UCX07
	1 7/16	133	92.075	111	78.5	12	26	9	11	39.2	49.2	19	M10	UCFCX07-22E		UCX07-22
40	1 1/2	5 1/4	3.625	4 3/8	3 3/32	15/32	1 1/32	23/64	7/16	1 17/32	1.937	0.748	3/8	UCFCX08-24E	FCX08E	UCX08-24
	1 7/16	133	92.075	111	78.5	12	26	9	11	39.2	49.2	19	M10	UCFCX08E		UCX08
45	1 11/16	6 3/32	4.250	5 1/8	3 5/8	35/64	31/32	5/16	15/32	1 19/32	2.031	0.748	7/16	UCFCX09-27E	FCX09E	UCX09-27
	1 3/4	155	107.95	130	91.9	14	25	8	12	40.6	51.6	19	M12	UCFCX09-28E		UCX09-28
50	1 15/16	6 3/8	4.5	5 23/64	3 25/32	35/64	31/32	9/32	5/8	1 19/32	2.189	0.874	7/16	UCFCX10-31E	FCX10E	UCX10-31
	2	162	114.3	136	96.2	14	25	7	16	40.4	55.6	22.2	M12	UCFCX10E		UCX10
60	2 1/16	7 5/8	5.500	6 1/2	4 19/32	5/8	1 5/16	7/16	25/32	2	2.563	1.000	1/2	UCFCX12E	FCX12E	UCX12
	2 3/16	194	139.7	165	116.7	16	33	11	20	50.7	65.1	25.4	M14	UCFCX12-39E		UCX12-39
65	2 1/2	7 5/8	5.500	6 1/2	4 19/32	5/8	1 5/16	7/16	25/32	2 3/16	2.937	1.189	1/2	UCFCX13-40E	FCX13E	UCX13-40
	2 3/4	194	139.7	165	116.7	16	33	11	20	55.4	74.6	30.2	M14	UCFCX13E		UCX13
70	2 3/4	8 3/4	6.375	7 31/64	5 9/32	3/4	1 13/32	35/64	25/32	2 5/16	3.063	1.331	5/8	UCFCX14-44E	FCX14E	UCX14-44
	2 7/8	222	161.925	190	134.3	19	36	14	20	58.5	77.8	33.3	M16	UCFCX14E		UCX14
75	2 15/16	8 3/4	6.375	7 31/64	5 9/32	3/4	1 3/8	15/32	55/64	2 13/32	3.252	1.311	5/8	UCFCX15-47E	FCX15E	UCX15-47
	3	222	161.925	190	134.3	19	35	12	22	61.3	82.6	33.3	M16	UCFCX15E		UCX15
80	—	10 1/4	7.375	8 5/8	6 3/32	29/32	1 13/32	25/64	63/64	2 7/16	3.374	1.343	3/4	UCFCX16E	FCX16E	UCX16
	—	260	187.325	219	154.8	23	36	10	25	61.6	85.7	34.1	M20			
85	—	10 1/4	7.375	8 5/8	6 3/32	29/32	1 13/32	25/64	63/64	2 3/8	3.780	1.563	3/4	UCFCX17E	FCX17E	UCX17
	3 7/16	260	187.325	219	154.8	23	36	10	25	66.3	96	39.7	M20	UCFCX17-55E		UCX17-55
90	—	10 1/4	7.375	8 5/8	6 3/32	29/32	1 11/16	15/32	1 7/64	2 7/8	4.094	1.689	3/4	UCFCX18E	FCX18E	UCX18
	—	260	187.325	219	154.8	23	43	12	28	73.1	104	42.9	M20			
100	3 15/16	10 7/8	8.125	9 3/8	6 5/8	29/32	2 19/32	55/64	1 7/64	3 9/16	4.626	1.937	3/4	UCFCX20E	FCX20E	UCX20
	4	276	206.375	238	168.3	23	66	22	28	90.3	117.5	49.2	M20	UCFCX20-63E		UCX20-63
														UCFCX20-64E		UCX20-64

Remarks 1. In Part No. of unit, fitting codes follow bore diameter numbers. (See Table 10.5 in P.62)
2. Part No. of applicable grease fittings are shown below.
A-1/4-28UNF X05~X09
A-R1/8..... X10~X20



Variations of tolerance of spigot joint outside diameter (Δf_{3s}), variations of tolerance of distance from mounting surface to center of spherical bore (ΔA_{2s}), tolerance of position of bolt hole (X), and tolerance of circumferential runout of spigot joint (Y)

Housing No.	Δf_{3s}	ΔA_{2s}	Unit: mm	
			X	Y
FCX05E	0 -0.046	±0.5	0.7	0.2
FCX06E~FCX10E	0 -0.054			
FCX12E~FCX15E	0 -0.063	±0.8	1	0.3
FCX16E~FCX18E	0 -0.072			
FCX20E				0.4

Variations of tolerance of bolt hole diameter (Δh_s)

Housing No.	Unit: mm
FCX05E~FCX20E	±0.2

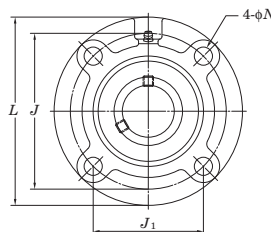
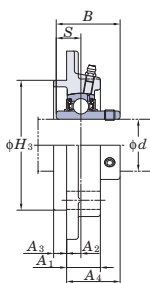
	Basic Load Ratings kN		Factor	Mass
	C_r	C_{0r}	f_0	kg
	19.5	11.3	13.9	1.2
	25.7	15.4	13.9	1.5
	29.1	17.8	14.0	1.9
	34.1	21.3	14.0	2.0
	35.1	23.3	14.4	2.6
	43.4	29.4	14.4	3.2
	57.2	40.1	14.4	5.3
	62.2	44.1	14.5	5.7
	67.4	48.3	14.5	7.3
	72.7	53.0	14.6	8.0
	84.0	61.9	14.5	11.3
	96.1	71.5	14.5	12.9
	109	81.9	14.4	13.5
	133	105	14.4	18.2

3. As for the triple seal type product, suffix code L3 follows the Part No. of unit or bearing. (Example of Part No. : UCFCX06EL3, UCX06L3)
4. For the dimensions and forms of applicable bearings, see the dimensional tables of ball bearing for unit.
5. Housings of nodular graphite cast iron are also available.



4-Bolt Flange Cartridge Units

UCFCF
Cylindrical bore
(with set screws)
d 25 ~ 55 mm



Shaft Dia. mm inch	Dimensions inch mm											Bolt Size inch mm	Standard		
	L	H ₃	J	J ₁	N	A ₁	A ₂	A ₃	A ₄	B	S		Unit No.	Housing No.	Bearing No.
25 7/8 15/16 1	4 3/8	3	3 5/8	2 9/16	1 3/32	7/8	7/16	1/4	1 7/32	1.343	0.563	5/16 M8	UCFCF205-14 UCFCF205-15 UCFCF205 UCFCF205-16	FCF205	UC205-14 UC205-15 UC205 UC205-16
	111	76.2	92.1	65.1	10.5	22.1	11.1	6.4	30.9	34.1	14.3				
30 1 1/8 1 3/16 1 1/4	5	3.375	4 1/8	2 29/32	1 5/32	2 5/32	1 9/64	27/64	1 5/32	1.500	0.626	7/16 M10	UCFCF206-18 UCFCF206 UCFCF206-19 UCFCF206-20	FCF206	UC206-18 UC206 UC206-19 UC206-20
	127	85.725	104.8	74.1	12	20	7.5	10.5	29.7	38.1	15.9				
35 1 1/4 1 5/16 1 3/8 1 7/16	5 1/4	3.625	4 3/8	3 3/32	1 5/32	7/8	9/32	1 5/32	1 9/32	1.689	0.689	7/16 M10	UCFCF207-20 UCFCF207-21 UCFCF207-22 UCFCF207 UCFCF207-23	FCF207	UC207-20 UC207-21 UC207-22 UC207 UC207-23
	133	92.075	111.1	78.6	12	22.2	7.1	11.9	32.5	42.9	17.5				
40 1 1/2 1 9/16	5 1/4	3.625	4 3/8	3 3/32	1 5/32	1 1/32	3/8	1 5/32	1 9/16	1.937	0.748	7/16 M10	UCFCF208-24 UCFCF208-25 UCFCF208	FCF208	UC208-24 UC208-25 UC208
	133	92.075	111.1	78.6	12	26.1	9.5	11.9	39.7	49.2	19				
45 1 5/8 1 11/16 1 3/4	6 5/32	4.25	5 1/8	3 5/8	1 7/32	7/8	7/32	1 5/32	1 13/32	1.937	0.748	1/2 M12	UCFCF209-26 UCFCF209-27 UCFCF209-28 UCFCF209	FCF209	UC209-26 UC209-27 UC209-28 UC209
	156	107.95	130.2	92.05	13.5	22	5.5	12	35.7	49.2	19				
50 1 7/8 1 15/16 2	6 3/8	4.5	5 3/8	3 51/64	1 7/32	1 1/16	1 1/32	5/8	1 5/8	2.031	0.748	1/2 M12	UCFCF210-30 UCFCF210-31 UCFCF210 UCFCF210-32	FCF210	UC210-30 UC210-31 UC210 UC210-32
	162	114.3	136.5	96.5	13.5	27.1	8.7	15.9	41.3	51.6	19				
55 2 2 1/8 2 3/16	7 1/8	5	6	4 1/4	1 9/32	7/8	7/32	7/8	1 17/32	2.189	0.874	1/2 M14	UCFCF211-32 UCFCF211-34 UCFCF211 UCFCF211-35	FCF211	UC211-32 UC211-34 UC211 UC211-35
	181	127	152.4	107.8	15	22.2	5.5	22.2	38.9	55.6	22.2				

Remarks 1. In Part No. of unit and units with covers, fitting codes follow bore diameter numbers. (See Table 10.5 in P.62.)
2. Part No. of applicable grease fittings are shown below.
A-1/4-28UNF 205~210
A-R1/8..... 211



Variations of tolerance of spigot joint outside diameter (ΔH_{3s}), variations of tolerance of distance from mounting surface to center of spherical bore (ΔA_{2s}), tolerance of position of bolt hole (X), and tolerance of circumferential runout of spigot joint (Y)

Variations of tolerance of bolt hole diameter (Δh_{3s})

Housing No.	Unit: mm			
	ΔH_{3s}	ΔA_{2s}	X	Y
FCF205~FCF206	0 -0.046	±0.5	0.7	0.2
FCF207~FCF210	0 -0.054			
FCF211	0 -0.063	±0.8	1	0.3

Unit: mm	
Housing No.	Δh_{3s}
FCF205~FCF211	±0.2

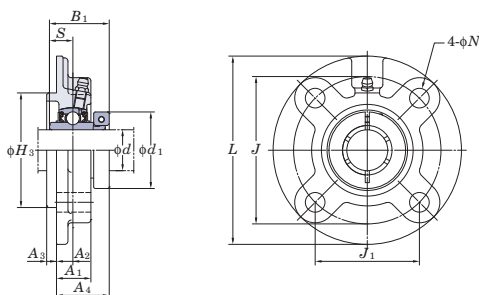
	Mass	Basic Load Ratings		Factor
		kN		
	kg	C_r	C_{0r}	f_0
	1.2	14.0	7.85	13.9
	1.8	19.5	11.3	13.9
	1.8	25.7	15.4	13.9
	2.1	29.1	17.8	14.0
	2.8	34.1	21.3	14.0
	3.2	35.1	23.3	14.4
	4.2	43.4	29.4	14.4

- As for the triple seal type product (from 201 to 205 are the double seal type products), suffix code L3 (L2) follows the Part No. of unit or bearing. (Example of Part No. : UCFCF206JL3, UC206L3)
- For the dimensions and forms of applicable bearings, see the dimensional tables of ball bearing for unit.
- Housings of nodular graphite cast iron are also available.



4-Bolt Flange Cartridge Units

NCFC
Cylindrical bore
(with concentric locking collar)
d 20 ~ 60 mm



Shaft Dia. mm inch	Dimensions													Bolt Size inch mm	Unit No.	Housing No.	Bearing No.
	inch mm																
d	L	H ₃	J	J ₁	N	A ₁	A ₂	A ₃	A ₄	B ₁	S	d ₁					
20 3/4	3 15/16	2.4409	3 5/64	2 11/64	15/32	13/16	25/64	13/64	1 3/16	1 9/32	0.500	1 3/4	3/8	NCFC204-12	FC204	NC204-12 NC204	
	100	62	78	55.1	12	20.5	10	5	29.8	32.5	12.7	44.5	M10	NCFC204			
25 7/8 15/16	4 17/32	2.7559	3 35/64	2 1/2	15/32	13/16	25/64	15/64	1 9/32	1 7/16	0.563	1 15/16	3/8	NCFC205-14	FC205	NC205-14 NC205-15 NC205 NC205-16	
	115	70	90	63.6	12	21	10	6	32.2	36.5	14.3	49.2	M10	NCFC205-15 NCFC205 NCFC205-16			
30 1 1/8 1 3/16 1 1/4	4 29/32	3.1496	3 15/16	2 25/32	15/32	29/32	25/64	5/16	1 11/32	1 9/16	0.626	2 3/16	3/8	NCFC206-18	FC206	NC206-18 NC206 NC206-19 NC206-20	
	125	80	100	70.7	12	23	10	8	33.8	39.7	15.9	55.6	M10	NCFC206-19 NCFC206-20			
35 1 1/4 1 3/8	5 5/16	3.5433	4 21/64	3 1/16	35/64	1 1/32	7/16	5/16	1 1/2	1 3/4	0.689	2 7/16	7/16	NCFC207-20	FC207	NC207-20	
	135	90	110	77.8	14	26	11	8	38	44.5	17.5	61.9	M12	NCFC207-20			
35 1 3/8 1 7/16	5 5/16	3.5433	4 21/64	3 1/16	35/64	1 1/32	7/16	5/16	1 1/2	1 3/4	0.689	2 9/16	7/16	NCFC207-22	FC207	NC207-22 NC207 NC207-23	
	135	90	110	77.8	14	26	11	8	38	44.5	17.5	65.1	M12	NCFC207-23			
40 1 1/2	5 23/32	3.9370	4 23/32	3 11/32	35/64	1 1/32	7/16	25/64	1 11/16	2	0.748	2 11/16	7/16	NCFC208-24	FC208	NC208-24 NC208	
	145	100	120	84.8	14	26	11	10	42.8	50.8	19	68.3	M12	NCFC208			
45 1 5/8 1 11/16 1 3/4	6 5/16	4.1339	5 13/64	4 43/64	5/8	1 1/32	25/64	15/32	1 21/32	2	0.748	2 13/16	1/2	NCFC209-26	FC209	NC209-26	
	160	105	132	93.3	16	26	10	12	41.8	50.8	19	71.4	M14	NCFC209-26			
45 1 11/16 1 3/4	6 5/16	4.1339	5 13/64	4 43/64	5/8	1 1/32	25/64	15/32	1 21/32	2	0.748	2 15/16	1/2	NCFC209-27	FC209	NC209-27 NC209-28 NC209	
	160	105	132	93.3	16	26	10	12	41.8	50.8	19	74.6	M14	NCFC209-28 NCFC209			
50 1 15/16 2	6 1/2	4.3307	5 7/16	3 27/32	5/8	1 3/32	25/64	15/32	1 3/4	2 3/32	0.748	3 3/8	1/2	NCFC210-31	FC210	NC210-31 NC210 NC210-32	
	165	110	138	97.6	16	28	10	12	44.1	53.1	19	85.7	M14	NCFC210-32			
55 2 2 3/16	7 9/32	4.9213	5 29/32	4 11/64	3/4	1 7/32	33/64	15/32	1 7/8	2 1/4	0.874	3 1/2	5/8	NCFC211-32	FC211	NC211-32	
	185	125	150	106.1	19	31	13	12	47.9	57.1	22.2	88.9	M16	NCFC211-32			
55 2 3/16	7 9/32	4.9213	5 29/32	4 11/64	3/4	1 7/32	33/64	15/32	1 7/8	2 1/4	0.874	3 5/8	5/8	NCFC211	FC211	NC211 NC211-35	
	185	125	150	106.1	19	31	13	12	47.9	57.1	22.2	92.1	M16	NCFC211-35			
60 2 1/4	7 11/16	5.3150	6 19/64	4 29/64	3/4	1 13/32	43/64	15/32	2 9/32	2 5/8	1.000	4 1/16	5/8	NCFC212-36	FC212	NC212-36	
	195	135	160	113.1	19	36	17	12	58.3	66.7	25.4	103.2	M16	NCFC212-36			
60 2 7/16	7 11/16	5.3150	6 19/64	4 29/64	3/4	1 13/32	43/64	15/32	2 9/32	2 5/8	1.000	4 1/8	5/8	NCFC212	FC212	NC212 NC212-39	
	195	135	160	113.1	19	36	17	12	58.3	66.7	25.4	104.8	M16	NCFC212-39			

Remarks 1. In Part No. of unit, fitting codes follow bore diameter codes. (See Table 10.5 in P.62.)
2. Part No. of applicable grease fittings are shown below.
A-1/4-28UNF204~210
A-R1/8.....211~212



Variations of tolerance of spigot joint outside diameter (ΔH_{3s}), variations of tolerance of distance from mounting surface to center of spherical bore (ΔA_{2s}), tolerance of position of bolt hole (X), and tolerance of circumferential runout of spigot joint (Y)

Variations of tolerance of bolt hole diameter (Δh_{1s})

Housing No.	ΔH_{3s}	ΔA_{2s}	Unit: mm	
			X	Y
FC204~FC206	0 -0.046	±0.5	0.7	0.2
FC207~FC210	0 -0.054			
FC211~FC212	0 -0.063	±0.8	1	0.3

Housing No.	Unit: mm	
	Δh_{1s}	
FC204~FC212	±0.2	

	Basic Load Ratings kN		Factor	Mass
	C_r	C_{0r}	f_0	kg
	12.8	6.65	13.2	0.87
	14.0	7.85	13.9	1.15
	19.5	11.3	13.9	1.5
	25.7	15.4	13.9	2.0
	25.7	15.4	13.9	2.0
	29.1	17.8	14.0	2.4
	34.1	21.3	14.0	3.0
	34.1	21.3	14.0	3.0
	35.1	23.3	14.4	3.5
	43.4	29.4	14.4	4.6
	43.4	29.4	14.4	4.6
	52.4	36.2	14.4	5.7
	52.4	36.2	14.4	5.7

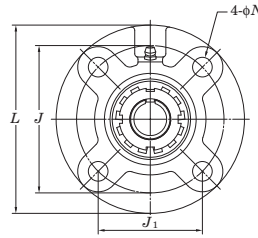
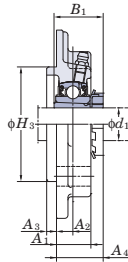
- For the dimensions and forms of applicable bearings, see the dimensional tables of ball bearing for unit.
- Representative examples of the forms of housing are indicated.



4-Bolt Flange Cartridge Units

UKFC

Tapered bore (with adapter)
 d_1 20 ~ 65 mm

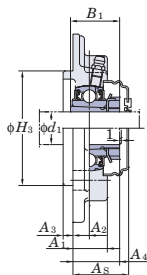


Shaft Dia. mm inch	Dimensions inch mm											Bolt Size inch mm	Standard		
	L	H_3	J	J_1	N	A_1	A_2	A_3	A_4	B_1	Unit No.		Housing No.	Bearing No.	
20	$3/4$	4 17/32	2.7559	3 35/64	2 1/2	15/32	13/16	25/64	15/64	1 3/16	1 3/8	3/8	UKFC205	FC205	UK205
	$3/4$	115	70	90	63.6	12	21	10	6	30	35	M10	UKFCX05	FCX05	UKX05
25	1	4 29/32	3.1496	3 15/16	2 25/32	15/32	29/32	25/64	5/16	1 1/4	1 1/2	3/8	UKFC206	FC206	UK206
	1	125	80	100	70.7	12	23	10	8	31.5	38	M10	UKFCX06	FCX06	UKX06
30	$1 1/8$	5 5/16	3.5433	4 21/64	3 1/16	35/64	1 1/32	7/16	5/16	1 3/8	1 11/16	7/16	UKFC207	FC207	UK207
	$1 1/8$	135	90	110	77.8	14	26	11	8	35	43	M12	UKFCX07	FCX07	UKX07
35	$1 1/4$	5 23/32	3.9370	4 23/32	3 11/32	35/64	1 1/32	7/16	25/64	1 1/2	1 13/16	7/16	UKFC208	FC208	UK208
	$1 1/4$	145	100	120	84.8	14	26	11	10	38	46	M12	UKFCX08	FCX08	UKX08
40	$1 1/2$	6 5/16	4.1339	5 13/64	3 43/64	5/8	1 1/32	25/64	15/32	1 17/32	1 31/32	1/2	UKFC209	FC209	UK209
	$1 1/2$	160	105	132	93.3	16	26	10	12	39	50	M14	UKFCX09	FCX09	UKX09
45	$1 3/4$	6 3/32	4.2520	5 1/8	3 5/8	35/64	31/32	5/16	15/32	1 5/16	1 31/32	7/16	UKFC210	FC210	UK210
	$1 3/4$	165	110	138	97.6	16	28	10	12	40	55	M14	UKFCX10	FCX10	UKX10
50	$1 7/8$	6 3/8	4.6457	5 23/64	3 25/32	35/64	31/32	9/32	5/8	1 11/32	2 5/32	7/16	UKFC211	FC211	UK211
	2	185	125	150	106.1	19	31	13	12	45.5	59	M16	UKFCX11	FCX11	UKX11
55	$2 1/8$	7 3/32	5	5 63/64	4 15/64	5/8	1 1/32	5/32	55/64	1 5/16	2 5/16	1/2	UKFC212	FC212	UK212
	$2 1/8$	180	127	152	107.5	16	26	4	22	33	59	M14	UKFCX12	FCX12	UKX12
60	$2 1/4$	7 11/16	5.3150	6 19/64	4 29/64	3/4	1 13/32	43/64	15/32	2 3/32	2 7/16	5/8	UKFC213	FC213	UK213
	$2 1/4$	195	135	160	113.1	19	36	17	12	53.5	62	M16	UKFCX13	FCX13	UKX13
65	$2 3/8$	7 5/8	5.5118	6 1/2	4 19/32	5/8	1 5/16	7/16	25/32	1 21/32	2 7/16	1/2	UKFC215	FC215	UK215
	$2 3/8$	194	140	165	116.7	16	33	11	20	42	62	M14	UKFCX15	FCX15	UKX15

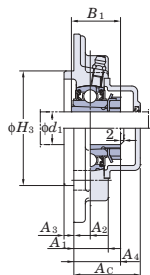
Remarks 1. In Part No. of unit and units with covers, fitting codes follow bore diameter numbers. (See Table 10.5 in P.62.)
2. Part No. of applicable grease fittings are shown below.
A-1/4-28UNF 205~210, X05~X09
A-1/8..... 211~218, X10~X20



With Pressed Steel Cover



With Cast Iron Cover



Variations of tolerance of spigot joint outside diameter (ΔH_{3a}), variations of tolerance of distance from mounting surface to center of spherical bore (ΔA_{2a}), tolerance of position of bolt hole (X), and tolerance of circumferential runout of spigot joint (Y)

Housing No.	FCX	ΔH_{3a}	ΔA_{2a}	X	Y	Unit: mm
FC205~FC206	FCX05	0 -0.046	±0.5	0.7	0.2	
FC207~FC210	FCX06~FCX10	0 -0.054				
FC211~FC217	FCX11~FCX15	0 -0.063	±0.8	1	0.3	
FC218	FCX16~FCX18 FCX20	0 -0.072				

Variations of tolerance of bolt hole diameter (ΔH_{3a})

Housing No.	ΔH_{3a}	Unit: mm
FC204~FC218 FCX05~FCX20	±0.2	

Adapter No.	Mass kg	Basic Load Ratings kN		Factor f_0	With Pressed Steel Cover				With Cast Iron Cover					
		C_r	C_{0r}		Unit No.		Dimension mm	Mass kg	Unit No.		Dimension mm	Mass kg		
					Open Type	Closed Type			Open Type	Closed Type				
HE2305X	0.99	14.0	7.85	13.9	—	—	—	—	—	—	—	—	—	
H2305X	0.99	14.0	7.85	13.9	UKFC205C	UKFC205D	34.5	1 11/32	0.99	UKFC205FC	UKFC205FD	43	1 21/32	1.2
HE2305X	1.2	19.5	11.3	13.9	—	—	—	—	—	—	—	—	—	
H2305X	1.2	19.5	11.3	13.9	UKFCX05C	UKFCX05D	36.5	1 7/16	1.2	—	—	—	—	
H2306X	1.3	19.5	11.3	13.9	UKFC206C	UKFC206D	36.5	1 7/16	1.3	UKFC206FC	UKFC206FD	45	1 25/32	1.6
HE2306X	1.3	19.5	11.3	13.9	—	—	—	—	—	—	—	—	—	
H2306X	1.5	25.7	15.4	13.9	UKFCX06C	UKFCX06D	38	1 1/2	1.5	—	—	—	—	
HE2306X	1.5	25.7	15.4	13.9	—	—	—	—	—	—	—	—	—	
HS2307X	1.7	25.7	15.4	13.9	—	—	—	—	—	—	—	—	—	
H2307X	1.7	25.7	15.4	13.9	UKFC207C	UKFC207D	41	1 5/8	1.7	UKFC207FC	UKFC207FD	50	1 31/32	2.1
HS2307X	1.9	29.1	17.8	14.0	—	—	—	—	—	—	—	—	—	
H2307X	1.9	29.1	17.8	14.0	UKFCX07C	UKFCX07D	43.5	1 23/32	1.9	—	—	—	—	
HE2308X	2.0	29.1	17.8	14.0	—	—	—	—	—	—	—	—	—	
HS2308X	2.0	29.1	17.8	14.0	—	—	—	—	—	—	—	—	—	
H2308X	2.0	29.1	17.8	14.0	UKFC208C	UKFC208D	45.5	1 25/32	2.0	UKFC208FC	UKFC208FD	54	2 1/8	2.4
HE2308X	1.9	34.1	21.3	14.0	—	—	—	—	—	—	—	—	—	
HS2308X	1.9	34.1	21.3	14.0	—	—	—	—	—	—	—	—	—	
H2308X	1.9	34.1	21.3	14.0	UKFCX08C	UKFCX08D	43.5	1 23/32	1.9	—	—	—	—	
HE2309X	2.7	34.1	21.3	14.0	—	—	—	—	—	—	—	—	—	
H2309X	2.7	34.1	21.3	14.0	UKFC209C	UKFC209D	44.5	1 3/4	2.7	UKFC209FC	UKFC209FD	54	2 1/8	3.2
HE2309X	2.6	35.1	23.3	14.4	—	—	—	—	—	—	—	—	—	
H2309X	2.6	35.1	23.3	14.4	UKFCX09C	UKFCX09D	45	1 25/32	2.6	—	—	—	—	
HE2310X	3.0	35.1	23.3	14.4	—	—	—	—	—	—	—	—	—	
H2310X	3.0	35.1	23.3	14.4	UKFC210C	UKFC210D	47	1 27/32	3.0	UKFC210FC	UKFC210FD	58.5	2 5/16	3.5
HE2310X	3.1	43.4	29.4	14.4	—	—	—	—	—	—	—	—	—	
H2310X	3.1	43.4	29.4	14.4	UKFCX10C	UKFCX10D	45	1 25/32	3.1	—	—	—	—	
HE2311X	4.3	43.4	29.4	14.4	—	—	—	—	—	—	—	—	—	
H2311X	4.3	43.4	29.4	14.4	UKFC211C	UKFC211D	51	2	4.3	UKFC211FC	UKFC211FD	62.5	2 15/32	4.9
HE2311X	4.3	52.4	36.2	14.4	—	—	—	—	—	—	—	—	—	
HS2311X	4.0	52.4	36.2	14.4	—	—	—	—	—	—	—	—	—	
H2311X	4.0	52.4	36.2	14.4	UKFCX11C	UKFCX11D	48.5	1 29/32	4.0	—	—	—	—	
HE2311X	4.0	52.4	36.2	14.4	—	—	—	—	—	—	—	—	—	
HS2312X	4.9	52.4	36.2	14.4	—	—	—	—	—	—	—	—	—	
H2312X	4.9	52.4	36.2	14.4	UKFC212C	UKFC212D	61.5	2 13/32	4.9	UKFC212FC	UKFC212FD	74	2 29/32	5.7
HE2312X	5.1	57.2	40.1	14.4	—	—	—	—	—	—	—	—	—	
HS2312X	5.1	57.2	40.1	14.4	UKFCX12C	UKFCX12D	55.5	2 3/16	5.1	—	—	—	—	
H2312X	5.1	57.2	40.1	14.4	—	—	—	—	—	—	—	—	—	
HE2313X	5.5	57.2	40.1	14.4	—	—	—	—	—	—	—	—	—	
H2313X	5.5	57.2	40.1	14.4	UKFC213C	UKFC213D	60.5	2 3/8	5.5	UKFC213FC	UKFC213FD	73	2 7/8	6.4
HE2313X	5.5	62.2	44.1	14.5	—	—	—	—	—	—	—	—	—	
HS2313X	5.3	62.2	44.1	14.5	—	—	—	—	—	—	—	—	—	
H2313X	5.3	62.2	44.1	14.5	UKFCX13C	UKFCX13D	60.5	2 3/8	5.3	—	—	—	—	
HE2313X	5.3	67.4	48.3	14.5	—	—	—	—	—	—	—	—	—	
HS2315X	7.4	67.4	48.3	14.5	—	—	—	—	—	—	—	—	—	
H2315X	7.4	67.4	48.3	14.5	UKFC215C	UKFC215D	67.5	2 21/32	7.4	UKFC215FC	UKFC215FD	80	3 5/32	8.4
HE2315X	7.7	72.7	53.0	14.6	—	—	—	—	—	—	—	—	—	
H2315X	7.7	72.7	53.0	14.6	UKFCX15C	UKFCX15D	66.5	2 5/8	7.7	—	—	—	—	

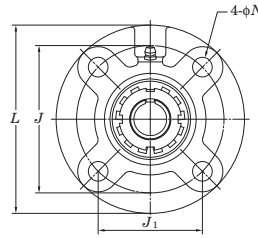
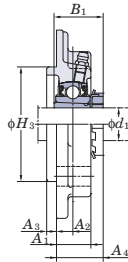
- In Part No. of unit with adapters and bearing with adapters, Part No. of applicable adapter follow the Part No. shown in the dimensional tables. (Example of Part No.: UKFC206J + H2306X, UK206 + H2306X)
- As for the triple seal type product (205 is the double seal type product), suffix code L3 (or L2) follows the Part No. of unit or bearing. (Example of Part No.: UKFC206JL3 + H2306X, UK206L3 + H2306X)
- For the dimensions and forms of applicable bearings and adapters, see the dimensional tables of ball bearing for unit and adapter.
- Housings of nodular graphite cast iron are also available.



4-Bolt Flange Cartridge Units

UKFC

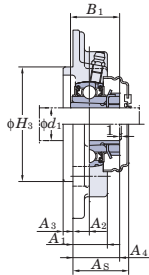
Tapered bore (with adapter)
 d_1 70 ~ 90 mm



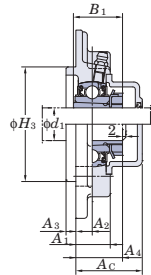
Shaft Dia. mm inch	Dimensions inch mm											Bolt Size inch mm	Standard		
	L	H_3	J	J_1	N	A_1	A_2	A_3	A_4	B_1	Unit No.		Housing No.	Bearing No.	
70 d_1	2 3/4 240	6.6929 170	7 7/8 200	5 9/16 141.4	2 9/32 23	1 31/32 42	45/64 18	5/8 16	2 15/32 62.5	3 1/16 78	3/4 M20	UKFC216	FC216	UK216	
	2 3/4 260	7.3228 186	8 5/8 219	6 3/32 154.8	2 9/32 23	1 13/32 36	25/64 10	63/64 25	1 15/16 49	3 1/16 78	3/4 M20	UKFCX16	FCX16	UKX16	
75 d_1	3 250	7.0866 180	8 3/16 208	5 51/64 147.1	2 9/32 23	1 25/32 45	45/64 18	45/64 18	3 17/32 64.5	3 7/32 82	3/4 M20	UKFC217	FC217	UK217	
	3 260	7.3228 186	8 5/8 219	6 3/32 154.8	2 9/32 23	1 13/32 36	25/64 10	63/64 25	2 1/16 52	3 7/32 82	3/4 M20	UKFCX17	FCX17	UKX17	
80 d_1	— 265	7.4803 190	8 21/32 220	6 1/8 155.5	2 9/32 23	1 31/32 50	55/64 22	45/64 18	2 13/16 71.5	3 3/8 86	3/4 M20	UKFC218	FC218	UK218	
	— 260	7.3228 186	8 5/8 219	6 3/32 154.8	2 9/32 23	1 11/16 43	15/32 12	1 7/64 28	2 5/32 55	3 3/8 86	3/4 M20	UKFCX18	FCX18	UKX18	
90 d_1	3 1/2 276	8.1102 206	9 3/8 238	6 5/8 168.3	2 9/32 23	2 19/32 66	55/64 22	1 7/64 28	2 23/32 69	3 13/16 97	3/4 M20	UKFCX20	FCX20	UKX20	

Remarks 1. In Part No. of unit and units with covers, fitting codes follow bore diameter numbers. (See Table 10.5 in P.62.)
2. Part No. of applicable grease fittings are shown below.
A-1/4-28UNF 205~210, X05~X09
A-R1/8..... 211~218, X10~X20

With Pressed Steel Cover



With Cast Iron Cover



Variations of tolerance of spigot joint outside diameter (ΔH_{3s}), variations of tolerance of distance from mounting surface to center of spherical bore (ΔA_{2s}), tolerance of position of bolt hole (X), and tolerance of circumferential runout of spigot joint (Y)

Housing No.	ΔH_{3s}	ΔA_{2s}	X	Y	Unit: mm
FC205~FC206	0 -0.046	±0.5	0.7	0.2	
FC207~FC210	0 -0.054				
FC211~FC217	0 -0.063	±0.8	1	0.3	
FC218	0 -0.072				

Variations of tolerance of bolt hole diameter (ΔH_{5s})

Housing No.	ΔH_{5s}	Unit: mm
FC204~FC218 FCX05~FCX20	±0.2	

Adapter No.	Mass kg	Basic Load Ratings kN		Factor f_0	With Pressed Steel Cover				With Cast Iron Cover							
		C_r	C_{0r}		Unit No.	Open Type	Closed Type	Dimension mm inch	Mass kg	Unit No.	Open Type	Closed Type	Dimension mm inch	Mass kg		
HE2316X	9.0	72.7	53.0	14.6	—	—	—	—	—	—	—	—	—	—	—	—
H2316X	9.0	72.7	53.0	14.6	UKFC216C	UKFC216D	72.5	2 27/32	9.0	UKFC216FC	UKFC216FD	87	3 7/16	10.3	—	—
HE2316X	11.4	84.0	61.9	14.5	—	—	—	—	—	—	—	—	—	—	—	—
H2316X	11.4	84.0	61.9	14.5	UKFCX16C	UKFCX16D	66.5	2 5/8	11.4	—	—	—	—	—	—	—
H2317X	10.4	84.0	61.9	14.5	UKFC217C	UKFC217D	74.5	2 15/16	10.4	UKFC217FC	UKFC217FD	89	3 1/2	11.8	—	—
HE2317X	10.4	84.0	61.9	14.5	—	—	—	—	—	—	—	—	—	—	—	—
H2317X	12.6	96.1	71.5	14.5	UKFCX17C	UKFCX17D	71.5	2 13/16	12.6	—	—	—	—	—	—	—
HE2317X	12.6	96.1	71.5	14.5	—	—	—	—	—	—	—	—	—	—	—	—
H2318X	13.3	96.1	71.5	14.5	UKFC218C	UKFC218D	83.5	3 9/32	13.3	UKFC218FC	UKFC218FD	98	3 27/32	14.9	—	—
H2318X	13.0	109	81.9	14.4	—	—	—	—	—	UKFCX18C	UKFCX18D	92	3 5/8	15.1	—	—
HE2320X	17.1	133	105	14.4	—	—	—	—	—	—	—	—	—	—	—	—
H2320X	17.1	133	105	14.4	—	—	—	—	—	UKFCX20C	UKFCX20D	116	4 9/16	19.9	—	—

- In Part No. of unit with adapters and bearing with adapters, Part No. of applicable adapter follow the Part No. shown in the dimensional tables. (Example of Part No. : UKFC206J + H2306X, UK206 + H2306X)
- As for the triple seal type product (205 is the double seal type product), suffix code L3 (or L2) follows the Part No. of unit or bearing. (Example of Part No. : UKFC206JL3 + H2306X, UK206L3 + H2306X)
- For the dimensions and forms of applicable bearings and adapters, see the dimensional tables of ball bearing for unit and adapter.
- Housings of nodular graphite cast iron are also available.



Narrow Inner Ring Bearing 4-Bolt Flange Cartridge Units

SBFC-RKP8
Cylindrical bore
(with set screws)
d 20 ~ 55 mm

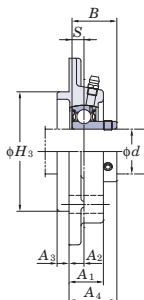


SBFC-RKP8

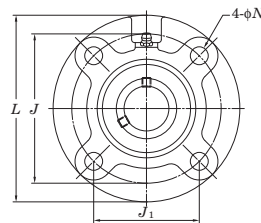
SAFC-FP9
Cylindrical bore
(with eccentric locking collar)



SAFC-FP9

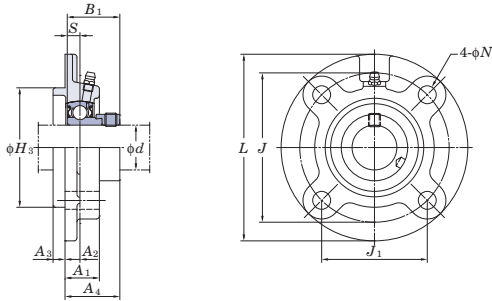


SBFC-RKP8



Shaft Dia. mm inch	Dimensions inch mm												SBFC-RKP8 S	SAFC-FP9 S	Bolt Size inch mm
	<i>d</i>	<i>L</i>	<i>J</i>	<i>J</i> ₁	<i>N</i>	<i>H</i> ₃	<i>A</i> ₁	<i>A</i> ₂	<i>A</i> ₃	<i>A</i> ₄	<i>B</i>	<i>B</i> ₁			
20 3/4	3 15/16	3 5/64	2 11/64	1 5/32	2.4409	1 3/16	2 5/64	1 3/64	1 5/16	0.984	1.220	0.276	0.295	3/8	
	100	78	55.1	12	62	20.5	10	5	33.5	25	31	7	7.5	M10	
25 7/8 1 15/16	4 17/32	3 35/64	2 1/2	1 5/32	2.7559	1 3/16	2 5/64	1 5/64	1 5/16	1.063	1.220	0.295	0.295	3/8	
	115	90	63.6	12	70	21	10	6	33.5	27	31	7.5	7.5	M10	
30 1 1/8 1 3/16 1 1/4	4 29/32	3 15/16	2 25/32	1 5/32	3.1496	2 9/32	2 5/64	5/16	1 7/16	1.181	1.906	0.315	0.354	3/8	
	125	100	70.7	12	80	23	10	8	36.7	30	35.7	8	9	M10	
35 1 1/4 1 5/16 1 3/8 1 7/16	5 5/16	4 21/64	3 1/16	3 5/64	3.5433	1 1/32	7/16	5/16	1 19/32	1.260	1.531	0.335	0.374	7/16	
	135	110	77.8	14	90	26	11	8	40.4	32	38.9	8.5	9.5	M12	
40 1 1/2 1 9/16	5 23/32	4 23/32	3 11/32	3 5/64	3.937	1 1/32	7/16	2 5/64	1 23/32	1.339	1.720	0.354	0.433	7/16	
	145	120	84.8	14	100	26	11	10	43.7	34	43.7	9	11	M12	
45 1 5/8 1 11/16 1 3/4	6 5/16	5 13/64	3 43/64	5/8	4.1339	1 1/32	1 5/32	1 5/32	1 3/4	—	1.720	—	0.433	1/2	
	160	132	93.3	16	105	26	12	12	44.7	—	43.7	—	11	M14	
50 1 7/8 1 15/16	6 1/2	5 7/16	3 27/32	5/8	4.3307	1 3/32	1 5/32	1 5/32	1 3/4	—	1.720	—	0.433	1/2	
	165	138	97.6	16	110	28	12	12	44.7	—	43.7	—	11	M14	
55 2 2 1/8 2 3/16	7 9/32	5 29/32	4 11/64	3/4	4.9213	1 7/32	3 3/64	1 5/32	1 15/16	—	1.906	—	0.472	5/8	
	185	150	106.1	19	125	31	13	12	49.4	—	48.4	—	12	M16	

Remarks 1. In Part No. of unit, fitting codes follow bore diameter codes. (See Table 10.5 in P62.)
2. Part No. of applicable grease fittings are shown below.
A-1/4-28UNF 204~210
A-R1/8..... 211



SAFC-FP9

Variations of tolerance of spigot joint outside diameter (Δf_{fs}), variations of tolerance of distance from mounting surface to center of spherical bore (ΔA_{2s}), tolerance of position of bolt hole (X), and tolerance of circumferential runout of spigot joint (Y)

Housing No.	Δf_{fs}	ΔA_{2s}	X	Y
FC204-FC206	0 -0.046	±0.5	0.7	0.2
FC207-FC210	0 -0.054			
FC211	0 -0.063	±0.8	1	0.3

Unit: mm

Variations of tolerance of bolt hole diameter (ΔN_s)

Housing No.	ΔN_s
FC204-FC211	±0.2

Unit: mm

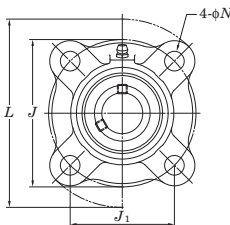
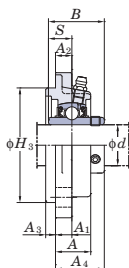
Unit No.	Bearing No.	Unit No.	Bearing No.	Housing No.	Basic Load Ratings kN		Factor f_0	Mass kg	
					C_r	C_{0r}		SBFC-RKP8	SAFC-FP9
SBFC204-12RKP8	SB204-12RKP8	SAFC204-12FP9	SA204-12FP9	FC204	12.8	6.65	13.2	0.72	0.76
SBFC204RKP8	SB204RKP8	SAFC204FP9	SA204FP9						
SBFC205-14RKP8	SB205-14RKP8	SAFC205-14FP9	SA205-14FP9	FC205	14.0	7.85	13.9	0.93	0.98
SBFC205-15RKP8	SB205-15RKP8	SAFC205-15FP9	SA205-15FP9						
SBFC205-16RKP8	SB205-16RKP8	SAFC205-16FP9	SA205-16FP9						
SBFC205RKP8	SB205RKP8	SAFC205FP9	SA205FP9						
SBFC206-18RKP8	SB206-18RKP8	SAFC206-18FP9	SA206-18FP9						
SBFC206-19RKP8	SB206-19RKP8	SAFC206-19FP9	SA206-19FP9	FC206	19.5	11.3	13.9	1.25	1.32
SBFC206-20RKP8	SB206-20RKP8	SAFC206-20FP9	SA206-20FP9						
SBFC206RKP8	SB206RKP8	SAFC206FP9	SA206FP9						
SBFC207-20RKP8	SB207-20RKP8	SAFC207-20FP9	SA207-20FP9	FC207	25.7	15.4	13.9	1.64	1.79
—	—	SAFC207-21FP9	SA207-21FP9						
SBFC207-22RKP8	SB207-22RKP8	SAFC207-22FP9	SA207-22FP9						
SBFC207-23RKP8	SB207-23RKP8	SAFC207-23FP9	SA207-23FP9						
SBFC207RKP8	SB207RKP8	SAFC207FP9	SA207FP9						
SBFC208-24RKP8	SB208-24RKP8	SAFC208-24FP9	SA208-24FP9	FC208	29.1	17.8	14.0	1.96	2.11
—	—	SAFC208-25FP9	SA208-25FP9						
SBFC208RKP8	SB208RKP8	SAFC208FP9	SA208FP9						
—	—	SAFC209-26FP9	SA209-26FP9						
—	—	SAFC209-27FP9	SA209-27FP9	FC209	34.1	21.3	14.0	—	2.74
—	—	SAFC209-28FP9	SA209-28FP9						
—	—	SAFC209FP9	SA209FP9						
—	—	SAFC210-30FP9	SA210-30FP9	FC210	35.1	23.3	14.4	—	2.95
—	—	SAFC210-31FP9	SA210-31FP9						
—	—	SAFC210FP9	SA210FP9						
—	—	SAFC211-32FP9	SA211-32FP9	FC211	43.4	29.4	14.4	—	4.29
—	—	SAFC211-34FP9	SA211-34FP9						
—	—	SAFC211-35FP9	SA211-35FP9						
—	—	SAFC211FP9	SA211FP9						

- For the dimensions and forms of applicable bearings, see the dimensional tables of ball bearing for unit.
- Representative examples of the forms of housing are indicated.



Corrosion Resistant Series 4-Bolt Flange Cartridge Units

UCSFC-H1S6
Cylindrical bore (with set screws)
d 20 ~ 40 mm

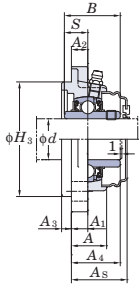


Shaft Dia. mm inch	Dimensions inch mm													Bolt Size inch mm	Unit No.	Standard Housing No.	Bearing No.
	L	H ₃	J	J ₁	N	A	A ₁	A ₂	A ₃	A ₄	B	S					
20 3/4	3 15/16	2.4409	3 5/64	2 11/64	1 5/32	53/64	13/32	25/64	13/64	1 1/8	1.220	0.500	3/8	UCSFC204-12H1S6 UCSFC204H1S6	SFC204H1	UC204-12S6 UC204S6	
	100	62	78	55.1	12	21	10	10	5	28.3	31	12.7	M10				
25 7/8 15/16	4 17/32	2.7559	3 35/64	2 1/2	1 5/32	27/32	13/32	25/64	15/64	1 3/16	1.343	0.563	3/8	UCSFC205-14H1S6 UCSFC205-15H1S6 UCSFC205H1S6 UCSFC205-16H1S6	SFC205H1	UC205-14S6 UC205-15S6 UC205S6 UC205-16S6	
	115	70	90	63.6	12	21.5	10	10	6	29.8	34.1	14.3	M10				
30 1 1/8 1 3/16 1 1/4	4 29/32	3.1496	3 15/16	2 25/32	1 5/32	29/32	13/32	25/64	5/16	1 9/32	1.500	0.626	3/8	UCSFC206-18H1S6 UCSFC206H1S6 UCSFC206-19H1S6 UCSFC206-20H1S6	SFC206H1	UC206-18S6 UC206S6 UC206-19S6 UC206-20S6	
	125	80	100	70.7	12	23	10	10	8	32.2	38.1	15.9	M10				
35 1 1/4 1 5/16 1 3/8	5 5/16	3.5433	4 21/64	3 1/16	3 5/64	1 1/32	15/32	7/16	5/16	1 7/16	1.689	0.689	7/16	UCSFC207-20H1S6 UCSFC207-21H1S6 UCSFC207-22H1S6 UCSFC207H1S6 UCSFC207-23H1S6	SFC207H1	UC207-20S6 UC207-21S6 UC207-22S6 UC207S6 UC207-23S6	
	135	90	110	77.8	14	26	12	11	8	36.4	42.9	17.5	M12				
40 1 1/2 1 9/16	5 23/32	3.9370	4 23/32	3 11/32	3 5/64	1 1/32	15/32	7/16	25/64	1 5/8	1.937	0.748	7/16	UCSFC208-24H1S6 UCSFC208-25H1S6 UCSFC208H1S6	SFC208H1	UC208-24S6 UC208-25S6 UC208S6	
	145	100	120	84.8	14	26	12	11	10	41.2	49.2	19	M12				

Remarks 1. In Part No. of unit and units with covers, fitting codes follow bore diameter numbers. (See Table 10.5 in P.62.)
2. Part No. of the applicable grease fitting is A-1/4-28UNFN12.
3. For the dimensions and forms of applicable bearings, see the dimensional tables of ball bearing for unit.



FYH



Variations of tolerance of spigot joint outside diameter (ΔH_{fs})

Housing No.	Unit: mm ΔH_{fs}
SFC204H1~SFC206H1	0 -0.046
SFC207H1~SFC208H1	0 -0.054

Mass	Basic Load Ratings		Factor	With Pressed Stainless Steel Cover		Dimension		Mass
	C_r	C_{0r}		Unit No.	Unit No.	mm	inch	
kg			f_0	Open Type	Closed Type	A_s		kg
0.5	10.9	5.35	13.2	-	-	-	-	-
0.5				UCSFC204H1CS6	UCSFC204H1DS6	32.5	1 9/32	0.5
0.6	11.9	6.3	13.9	-	-	-	-	-
0.6				UCSFC205H1CS6	UCSFC205H1DS6	34.5	1 11/32	0.6
0.6				-	-	-	-	-
0.8	16.5	9.05	13.9	-	-	-	-	-
0.8				UCSFC206H1CS6	UCSFC206H1DS6	36.5	1 7/16	0.8
0.8				-	-	-	-	-
0.8				-	-	-	-	-
1.1	21.8	12.3	13.9	-	-	-	-	-
1.1				-	-	-	-	-
1.1				UCSFC207H1CS6	UCSFC207H1DS6	41	1 5/8	1.1
1.1				-	-	-	-	-
1.4	24.8	14.3	14.0	-	-	-	-	-
1.4				-	-	-	-	-
1.4				UCSFC208H1CS6	UCSFC208H1DS6	45.5	1 25/32	1.4