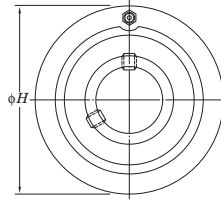
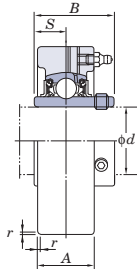




Cartridge Units

UCC
Cylindrical bore (with set screws)
d 12 ~ (45) mm



Shaft Dia.		Dimensions					Unit No.	Housing No.	Bearing No.	Basic Load Ratings		Factor	Mass
mm	inch	inch mm								C_r	C_{Or}		
d		H	A	r	B	S							
12	1/2						UCC201 UCC201-8		UC201 UC201-8				0.52
15	5/8	2.835	25/32	0.06	1.220	0.500	UCC202 UCC202-10	C204	UC202 UC202-10	12.8	6.65	13.2	0.50
17	3/4	72	20	1.5	31	12.7	UCC203 UCC204-12		UC203 UC204-12				0.49
20							UCC204		UC204				0.47
25	7/8	3.150	55/64	0.06	1.343	0.563	UCC205-14	C205	UC205-14	14.0	7.85	13.9	0.64
	15/16						UCC205-15		UC205-15				
	1	80	22	1.5	34.1	14.3	UCC205	UC205					
							UCC205-16	UC205-16					
30	1 1/8	3.543	1 1/16	0.06	1.500	0.626	UCCX05	CX05	UCX05	19.5	11.3	13.9	1.0
	1 3/16						UCCX05-16		UCX05-16				
	1 1/4	90	27	1.5	38.1	15.9	UCC305	UC305	21.2	10.9	12.6	1.5	
		3.543	1 1/32	0.08	1.496	0.591	UCC305-16	UC305-16					
	90	26	2	38	15								
35	1 3/8	3.937	1 3/16	0.08	1.689	0.689	UCC206-18	C206	UC206-18	19.5	11.3	13.9	0.81
	1 1/2						UCC206		UC206				
	1 3/4	85	27	1.5	38.1	15.9	UCC206-19	UC206-19	25.7	15.4	13.9	1.3	
		3.937	1 7/64	0.08	1.693	0.669	UCCX06	UCX06					
	100	30	2	42.9	17.5	UCCX06-19	UCX06-19						
		3.937	1 7/64	0.08	1.693	0.669	UCC306	C306	UC306	26.7	15.0	13.3	1.7
40	1 7/8	4.331	1 11/32	0.08	1.937	0.748	UCC207-20	C207	UC207-20	25.7	15.4	13.9	0.93
	1 5/8						UCC207-21		UC207-21				
	1 3/4	90	28	2	42.9	17.5	UCC207-22	UC207-22	29.1	17.8	14.0	1.7	
		4.331	1 17/64	0.12	1.890	0.748	UCC207	UC207					
	110	34	2	49.2	19	UCC207-23	UC207-23						
		4.331	1 17/64	0.12	1.890	0.748	UCCX07-22	CX07	UCX07-22	29.1	17.8	14.0	1.7
	110	32	3	48	19	UCCX07	UCX07						
		4.331	1 17/64	0.12	1.890	0.748	UCCX07-23	C307	UC307	33.4	19.3	13.2	2.2
		4.331	1 17/64	0.12	1.890	0.748							
45	1 7/8	4.724	1 1/2	0.08	1.937	0.748	UCC208-24	C208	UC208-24	29.1	17.8	14.0	1.2
	1 3/4						UCC208-25		UC208-25				
	1 1/2	100	30	2	49.2	19	UCC208	UC208	34.1	21.3	14.0	2.3	
		4.724	1 11/32	0.12	2.047	0.748	UCCX08-24	UCX08-24					
	120	38	2	49.2	19	UCCX08	UCX08						
		4.724	1 11/32	0.12	2.047	0.748	UCC308-24	C308	UC308-24	40.7	24.0	13.2	2.2
	120	34	3	52	19	UCC308	UC308						
		4.331	1 7/32	0.08	1.937	0.748	UCC209-26	C209	UC209-26	34.1	21.3	14.0	1.5
	1 11/16	110	31	2	49.2	19	UCC209-27		UC209-27				
	1 3/4						UCC209-28		UC209-28				
							UCC209	UC209					

- Remarks
- In Part No. of unit and units with covers, fitting codes follow bore diameter numbers. (See **Table 10.5** in P62.)
 - Part No. of applicable grease fittings are shown below.
A-1/4-28UNF 201~213, X05~X12, 305~308
A-R1/8..... 309~328
 - As for the triple seal type product (from 201 to 205 are the double seal type products), suffix code L3 (L2) follows the Part No. of unit or bearing. (Example of Part No. : UCC206JL3, UC206L3)
 - For the dimensions and forms of applicable bearings, see the dimensional tables of ball bearing for unit.



Variations of tolerance of outside diameter (ΔH_s), variations of tolerance of width (ΔA_s), and tolerance of circumferential runout of outside diameter (Y)

Unit: mm

Housing No.	ΔH_s	ΔA_s	Y
C204~C205	0 -0.030	±0.2	0.2
C206~C210	0 -0.035		
C211~C213	CX09~CX10 C309~C310 C311~C314 C315~C318	0 -0.040	0.3
	C319 C320~C322 C324~C328	0 -0.046 -0.052 0 -0.057	±0.3 0.4

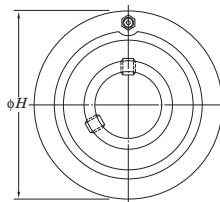
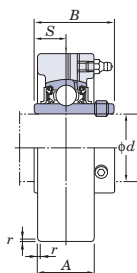
d (45) ~ 85 mm

Shaft Dia. mm inch	Dimensions inch mm					Unit No.	Housing No.	Bearing No.	Basic Load Ratings kN		Factor f_0	Mass kg
	H	A	r	B	S				C_r	C_{0r}		
45 $1\frac{11}{16}$ $1\frac{3}{4}$ $1\frac{3}{4}$	4.724 120	$1\frac{1}{2}$ 38	0.08 2	2.031 51.6	0.748 19	UCCX09-27 UCCX09-28 UCCX09	CX09	UCX09-27 UCX09-28 UCX09	35.1 23.3	14.4	2.3	
	5.118 130	$1\frac{1}{2}$ 38	0.12 3	2.244 57	0.866 22	UCC309-28 UCC309	C309	UC309-28 UC309	48.9 29.5	13.3	2.8	
	$1\frac{7}{8}$ $1\frac{15}{16}$ 2	4.724 120	$1\frac{19}{64}$ 33	0.08 2	2.031 51.6	0.748 19	UCC210-30 UCC210-31 UCC210 UCC210-32	C210	UC210-30 UC210-31 UC210 UC210-32	35.1 23.3	14.4	2.0
50 $1\frac{15}{16}$ 2 —	5.118 130	$1\frac{37}{64}$ 40	0.1 2.5	2.189 55.6	0.874 22.2	UCCX10-31 UCCX10 UCCX10-32	CX10	UCX10-31 UCX10 UCX10-32	43.4 29.4	14.4	2.8	
	5.512 140	$1\frac{37}{64}$ 40	0.12 3	2.402 61	0.866 22	UCC310	C310	UC310	62.0 38.3	13.2	3.2	
	2 $2\frac{1}{8}$ 2 $2\frac{3}{16}$	4.921 125	$1\frac{3}{8}$ 35	0.1 2.5	2.189 55.6	0.874 22.2	UCC211-32 UCC211-34 UCC211 UCC211-35	C211	UC211-32 UC211-34 UC211 UC211-35	43.4 29.4	14.4	2.2
55 $2\frac{3}{16}$ $2\frac{1}{4}$ 2 $2\frac{3}{16}$	5.906 150	$1\frac{21}{32}$ 42	0.1 2.5	2.563 65.1	1.000 25.4	UCCX11 UCCX11-35 UCCX11-36	CX11	UCX11 UCX11-35 UCX11-36	52.4 36.2	14.4	4.0	
	5.906 150	$1\frac{47}{64}$ 44	0.12 3	2.598 66	0.984 25	UCC311-32 UCC311 UCC311-35	C311	UC311-32 UC311 UC311-35	71.6 45.0	13.2	3.9	
	$2\frac{1}{4}$ $2\frac{3}{8}$ $2\frac{7}{16}$	5.118 130	$1\frac{1}{2}$ 38	0.1 2.5	2.563 65.1	1.000 25.4	UCC212-36 UCC212 UCC212-38 UCC212-39	C212	UC212-36 UC212 UC212-38 UC212-39	52.4 36.2	14.4	2.6
60 $2\frac{7}{16}$ $2\frac{7}{16}$ $2\frac{7}{16}$	6.299 160	$1\frac{47}{64}$ 44	0.1 2.5	2.563 65.1	1.000 25.4	UCCX12 UCCX12-39	CX12	UCX12 UCX12-39	57.2 40.1	14.4	4.6	
	6.299 160	$1\frac{13}{16}$ 46	0.12 3	2.795 71	1.024 26	UCC312 UCC312-39	C312	UC312 UC312-39	81.9 52.2	13.2	4.8	
	$2\frac{1}{2}$ $2\frac{1}{2}$	5.512 140	$1\frac{37}{64}$ 40	0.1 2.5	2.563 65.1	1.000 25.4	UCC213-40 UCC213	C213	UC213-40 UC213	57.2 40.1	14.4	3.0
65 $2\frac{1}{2}$	6.693 170	$1\frac{31}{32}$ 50	0.12 3	2.953 75	1.181 30	UCC313-40 UCC313	C313	UC313-40 UC313	92.7 59.9	13.2	5.7	
	7.087 180	$2\frac{3}{64}$ 52	0.12 3	3.071 78	1.299 33	UCC314-44 UCC314	C314	UC314-44 UC314	104 68.2	13.2	6.7	
75 $2\frac{15}{16}$ 3	7.480 190	$2\frac{11}{64}$ 55	0.16 4	3.228 82	1.260 32	UCC315-47 UCC315 UCC315-48	C315	UC315-47 UC315 UC315-48	113 77.2	13.2	7.8	
	7.874 200	$2\frac{23}{64}$ 60	0.16 4	3.386 86	1.339 34	UCC316	C316	UC316	123 86.7	13.3	9.2	
85 —	8.465 215	$2\frac{33}{64}$ 64	0.16 4	3.780 96	1.575 40	UCC317	C317	UC317	133 96.8	13.3	11.7	



Cartridge Units

UCC
Cylindrical bore (with set screws)
d 90 ~ 140 mm



Shaft Dia. mm	inch	Dimensions inch mm					Unit No.	Housing No.	Bearing No.	Basic Load Ratings kN		Factor f_0	Mass kg
		H	A	r	B	S				C_r	C_{0r}		
90	3 1/2	8.858	2 19/32	0.16	3.780	1.575	UCC318-56 UCC318	C318	UC318-56 UC318	143	107	13.3	13.1
		225	66	4	96	40							
95	-	9.449	2 53/64	0.16	4.055	1.614	UCC319	C319	UC319	153	119	13.3	15.8
		240	72	4	103	41							
100	3 15/16	10.236	2 61/64	0.16	4.252	1.654	UCC320 UCC320-63 UCC320-64	C320	UC320 UC320-63 UC320-64	173	141	13.2	19.6
		260	75	4	108	42							
105	-	10.236	2 61/64	0.16	4.409	1.732	UCC321	C321	UC321	184	153	13.2	27.0
		260	75	4	112	44							
110	-	11.811	3 5/32	0.2	4.606	1.811	UCC322	C322	UC322	205	180	13.2	29.2
		300	80	5	117	46							
120	-	12.598	3 35/64	0.2	4.961	2.008	UCC324	C324	UC324	207	185	13.5	35.9
		320	90	5	126	51							
130	-	13.386	3 15/16	0.24	5.315	2.126	UCC326	C326	UC326	229	214	13.6	43.0
		340	100	6	135	54							
140	-	14.173	3 15/16	0.24	5.709	2.323	UCC328	C328	UC328	253	246	13.6	52.9
		360	100	6	145	59							

- Remarks
1. In Part No. of unit and units with covers, fitting codes follow bore diameter numbers. (See **Table 10.5** in P.62.)
 2. Part No. of applicable grease fittings are shown below.
A-1/4-28UNF 201~213, X05~X12, 305~308
A-R1/8 309~328
 3. As for the triple seal type product (from 201 to 205 are the double seal type products), suffix code L3 (L2) follows the Part No. of unit or bearing.
(Example of Part No. : UCC206JL3, UC206L3)
 4. For the dimensions and forms of applicable bearings, see the dimensional tables of ball bearing for unit.



Variations of tolerance of outside diameter (ΔH_s), variations of tolerance of width (ΔA_s), and tolerance of circumferential runout of outside diameter (Y)

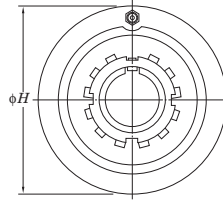
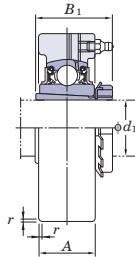
Unit: mm

Housing No.		ΔH_s	ΔA_s	Y
C204~C205		0 -0.030	±0.2	0.2
C206~C210	CX05~CX08	0 -0.035		
C211~C213	CX09~CX10	C309~C310	±0.3	0.3
	CX11~CX12	C311~C314		
		C315~C318		
		C319		
		C320~C322	±0.4	0.4
		C324~C328		



Cartridge Units

UKC
Tapered bore (with adapter)
 d_1 20 ~ (50) mm



Shaft Dia. mm inch	Dimensions inch mm				Unit No.	Housing No.	Bearing No.	Basic Load Ratings kN		Factor f_0	Adapter No.	Mass kg
	d_1	H	A	r				B_1	C_r			
20	$3/4$	3.150 80	$55/64$ 22	0.06 1.5	$1\ 3/8$ 35	UKC205	C205	UK205	14.0 7.85	13.9	HE2305X H2305X	0.7
	$3/4$	3.543 90	$1\ 1/16$ 27	0.06 1.5	$1\ 3/8$ 35	UKCX05	CX05	UKX05	19.5 11.3	13.9	HE2305X H2305X	0.99
	$3/4$	3.543 90	$1\ 1/32$ 26	0.08 2	$1\ 3/8$ 35	UKC305	C305	UK305	21.2 10.9	12.6	HE2305X H2305X	1.6
25	1	3.346 85	$1\ 1/16$ 27	0.06 1.5	$1\ 1/2$ 38	UKC206	C206	UK206	19.5 11.3	13.9	H2306X HE2306X	0.89
	1	3.937 100	$1\ 3/16$ 30	0.08 2	$1\ 1/2$ 38	UKCX06	CX06	UKX06	25.7 15.4	13.9	H2306X HE2306X	1.3
	1	3.937 100	$1\ 7/64$ 28	0.08 2	$1\ 1/2$ 38	UKC306	C306	UK306	26.7 15.0	13.3	H2306X HE2306X	1.8
	1	3.543 90	$1\ 7/64$ 28	0.08 2	$1\ 11/16$ 43	UKC207	C207	UK207	25.7 15.4	13.9	HS2307X H2307X	1.0
30	$1\ 1/8$	4.331 110	$1\ 11/32$ 34	0.08 2	$1\ 11/16$ 43	UKCX07	CX07	UKX07	29.1 17.8	14.0	HS2307X H2307X	1.8
	$1\ 1/8$	4.331 110	$1\ 17/64$ 32	0.12 3	$1\ 11/16$ 43	UKC307	C307	UK307	33.4 19.3	13.2	HS2307X H2307X	2.2
	$1\ 1/4$ $1\ 3/8$	3.937 100	$1\ 3/16$ 30	0.08 2	$1\ 13/16$ 46	UKC208	C208	UK208	29.1 17.8	14.0	HE2308X HS2308X H2308X	1.5
35	$1\ 1/4$ $1\ 3/8$	4.724 120	$1\ 1/2$ 38	0.08 2	$1\ 13/16$ 46	UKCX08	CX08	UKX08	34.1 21.3	14.0	HE2308X HS2308X H2308X	2.4
	$1\ 1/4$ $1\ 3/8$	4.724 120	$1\ 11/32$ 34	0.12 3	$1\ 13/16$ 46	UKC308	C308	UK308	40.7 24.0	13.2	HE2308X HS2308X H2308X	2.2
	$1\ 1/2$	4.331 110	$1\ 7/32$ 31	0.08 2	$1\ 31/32$ 50	UKC209	C209	UK209	34.1 21.3	14.0	HE2309X H2309X	1.8
40	$1\ 1/2$	4.724 120	$1\ 1/2$ 38	0.08 2	$1\ 31/32$ 50	UKCX09	CX09	UKX09	35.1 23.3	14.4	HE2309X H2309X	2.4
	$1\ 1/2$	5.118 130	$1\ 1/2$ 38	0.12 3	$1\ 31/32$ 50	UKC309	C309	UK309	48.9 29.5	13.3	HE2309X H2309X	2.8
	$1\ 3/4$	4.724 120	$1\ 19/64$ 33	0.08 2	$2\ 5/32$ 55	UKC210	C210	UK210	35.1 23.3	14.4	HE2310X H2310X	2.2
45	$1\ 3/4$	5.118 130	$1\ 37/64$ 40	0.1 2.5	$2\ 5/32$ 55	UKCX10	CX10	UKX10	43.4 29.4	14.4	HE2310X H2310X	2.9
	$1\ 3/4$	5.512 140	$1\ 37/64$ 40	0.12 3	$2\ 5/32$ 55	UKC310	C310	UK310	62.0 38.3	13.2	HE2310X H2310X	3.2
	$1\ 7/8$	4.921 125	$1\ 3/8$ 35	0.1 2.5	$2\ 5/16$ 59	UKC211	C211	UK211	43.4 29.4	14.4	HS2311X H2311X HE2311X	2.7
50	$1\ 7/8$	5.906 150	$2\ 1/32$ 42	0.1 2.5	$2\ 5/16$ 59	UKCX11	CX11	UKX11	52.4 36.2	14.4	HS2311X H2311X	4.1

- Remarks
- In Part No. of unit and units with covers, fitting codes follow bore diameter numbers. (See **Table 10.5** in P62.)
 - Part No. of applicable grease fittings are shown below.
A-1/4-28UNF 205~213, X05~X12, 305~308
A-R1/8..... 309~328
 - In Part No. of unit with adapters and bearing with adapters, Part No. of applicable adapter follow the Part No. shown in the dimensional tables.
(Example of Part No. : UKC206J + H2306X, UK206 + H2306X)
 - As for the triple seal type product (205 is the double seal type product), suffix code L3 (or L2) follows the Part No. of unit or bearing.
(Example of Part No. : UKC206JL3 + H2306X, UK206L3 + H2306X)
 - As for the dimensions and forms of applicable bearings and adapters, see the dimensional tables of ball bearing for unit and adapter.



$d_1 (50) \sim 125 \text{ mm}$

Variations of tolerance of outside diameter (ΔH_7), variations of tolerance of width (ΔA_6), and tolerance of circumferential runout of outside diameter (Y)

Housing No.		ΔH_7	ΔA_6	Y
C205		0 -0.030		
C206~C210	CX05~CX08	0 -0.035	±0.2	0.2
	C305~C308			
C211~C213	CX09~CX10	0 -0.040	±0.3	0.3
	C309~C310			
	C311~C314	0 -0.046	±0.3	0.4
	C315~C318			
	C319	0 -0.052		
	C320~C322			
	C324~C328	0 -0.057		

Shaft Dia. mm inch	d_1	Dimensions inch mm				Unit No.	Housing No.	Bearing No.	Basic Load Ratings kN		Factor f_0	Adapter No.	Mass kg
		H	A	r	B_1				C_r	C_{0r}			
50	1 7/8	5.906	1 47/64	0.12	2 5/16	UKC311	C311	UK311	71.6	45.0	13.2	HS2311X H2311X HE2311X	4.1
	2	150	44	3	59								
55	2 1/8	5.118	1 1/2	0.1	2 7/16	UKC212	C212	UK212	52.4	36.2	14.4	HS2312X H2312X	3.1
	2 1/8	6.299	1 47/64	0.1	2 7/16								
	2 1/8	6.299	1 13/16	0.12	2 7/16	UKC312	C312	UK312	81.9	52.2	13.2	HS2312X H2312X	4.7
60	2 1/4	5.512	1 37/64	0.1	2 9/16	UKC213	C213	UK213	57.2	40.1	14.4	HE2313X H2313X HS2313X	3.3
	2 3/8	140	40	2.5	65								
	2 1/4	6.693	1 31/32	0.12	2 9/16	UKC313	C313	UK313	92.7	59.9	13.2	HE2313X H2313X HS2313X	5.8
65	2 1/2	7.480	2 11/64	0.16	2 7/8	UKC315	C315	UK315	113	77.2	13.2	HE2315X H2315X	8.0
		190	55	4	73								
70	2 3/4	7.874	2 23/64	0.16	3 1/16	UKC316	C316	UK316	123	86.7	13.3	HE2316X H2316X	9.2
		200	60	4	78								
75		8.465	2 33/64	0.16	3 7/32	UKC317	C317	UK317	133	96.8	13.3	H2317X HE2317X	11.6
	3	215	64	4	82								
80		8.858	2 19/32	0.16	3 3/8	UKC318	C318	UK318	143	107	13.3	H2318X	13.1
		225	66	4	86								
85	3 1/4	9.449	2 53/64	0.16	3 17/32	UKC319	C319	UK319	153	119	13.3	HE2319X H2319X	16.1
		240	72	4	90								
90	3 1/2	10.236	2 61/64	0.16	3 13/16	UKC320	C320	UK320	173	141	13.2	HE2320X H2320X	19.2
		260	75	4	97								
100		11.811	3 5/32	0.2	4 1/8	UKC322	C322	UK322	205	180	13.2	H2322X HE2322X	29.1
	4	300	80	5	105								
110		12.598	3 35/64	0.2	4 13/32	UKC324	C324	UK324	207	185	13.5	H2324	36.2
		320	90	5	112								
115	4 1/2	13.386	3 15/16	0.24	4 3/4	UKC326	C326	UK326	229	214	13.6	HE2326 H2326	42.8
		340	100	6	121								
125		14.173	3 15/16	0.24	5 5/32	UKC328	C328	UK328	253	246	13.6	H2328	52.9
		360	100	6	131								