



**RODAVIGO, S.A.**  
RODAMIENTOS VIGO, S.A.

[www.rodavigo.net](http://www.rodavigo.net)

**+34 986 288118**  
Servicio de Att. al Cliente

**FYH**<sup>®</sup>

## ***HEAVY DUTY UNITS with Eccentric Locking Collars***



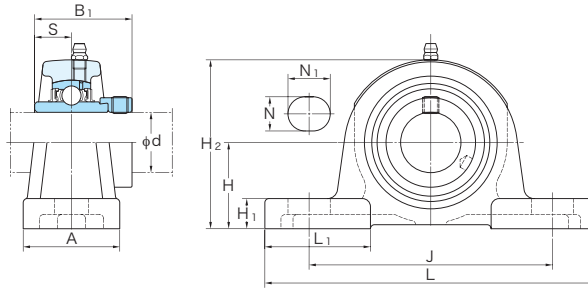
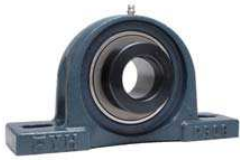
F NO.3000

**FYH BEARING UNITS USA, INC.**

[fyhbearings.com](http://fyhbearings.com)



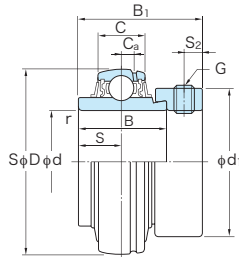
**NAP3E**  
Cylindrical bore  
(with eccentric locking collar)  
d 1 3/16 ~ 2 15/16 inch



Shaft Dia. inch	Dimensions											Bolt Size	Unit No.	Housing No.	Bearing No.	Mass	
	H	L	A	J	N	N <sub>1</sub>	H <sub>1</sub>	H <sub>2</sub>	L <sub>1</sub>	B <sub>1</sub>	S						inch
1 3/16	1 7/8	7 3/32	1 31/32	5 1/2	2 1/32	2 5/32	9/16	3 21/32	2 3/32	1.969	0.689	1/2	M14	NAP306-19E	P306E	NA306-19	2.3
1 7/16	2 1/8	8 9/32	2 7/32	6 9/16	2 1/32	3 1/32	2 1/2	4 1/8	2 9/16	2.031	0.720	1/2	M14	NAP307-23E	P307E	NA307-23	3.1
1 1/2	2 3/8	8 21/32	2 3/8	6 11/16	2 1/32	1 1/16	3/4	4 21/32	2 9/16	2.248	0.780	1/2	M14	NAP308-24E	P308E	NA308-24	4.1
1 11/16	2 5/8	9 21/32	2 5/8	7 15/32	2 5/32	1 3/16	1 3/16	5 3/16	2 15/16	2.311	0.780	5/8	M16	NAP309-27E	P309E	NA309-27	5.1
1 15/16	2 31/16	10 13/16	2 5/16	8 11/32	2 5/32	1 3/8	1 3/16	5 11/16	3 15/32	2.622	0.969	5/8	M16	NAP310-31E	P310E	NA310-31	7
2 3/16	3 1/16	12 7/32	3 5/32	9 9/32	2 5/32	1 1/2	3 1/2	6 1/8	3 17/32	2.874	1.094	5/8	M16	NAP311-35E	P311E	NA311-35	8.5
2 7/16	3 5/16	13	3 11/32	9 27/32	3 1/32	1 1/2	1 3/8	6 17/32	4 1/16	3.126	1.220	3/4	M20	NAP312-39E	P312E	NA312-39	10.1
2 11/16	3 31/16	14 3/16	3 17/32	11 1/32	1 1/16	1 9/16	1 7/16	7 13/32	4 11/32	3.626	1.343	7/8	M22	NAP314-43E	P314E	NA314-43	13.8
2 15/16	4 1/8	14 31/32	3 15/16	11 13/32	1 1/16	1 23/32	1 9/16	7 31/32	4 7/32	3.937	1.469	7/8	M22	NAP315-47E	P315E	NA315-47	16.8

Remark A-1/4-28UNF..... 201~210  
A-PT1/8..... 211~215

**NA3**  
Cylindrical bore  
(with eccentric locking collar)  
d 1 3/16 ~ 2 15/16 inch



Shaft Dia. inch	Dimensions					Basic Load Ratings		Factor	Bearing No.	Dimensions				Set Screw Brg.Bore	Mass
	D	B	B <sub>1</sub>	C	r (min.)	C <sub>r</sub>	C <sub>0r</sub>			C <sub>a</sub>	S	S <sub>2</sub>	d <sub>1</sub>		
1 3/16	2.835	1.437	1.969	0.945	0.043	26.7	15.0	13.3	NA306-19	0.256	0.689	0.268	1.937	5/16-24UNF	0.66
1 7/16	3.150	1.500	2.031	1.024	0.059	33.4	19.3	13.2	NA307-23	0.295	0.720	0.268	2.185	5/16-24UNF	0.81
1 1/2	3.543	1.626	2.248	1.102	0.059	40.7	24.0	13.2	NA308-24	0.315	0.780	0.315	2.500	3/8-24UNF	1.19
1 11/16	3.937	1.689	2.311	1.181	0.059	48.9	29.5	13.3	NA309-27	0.335	0.780	0.315	2.748	3/8-24UNF	1.47
1 15/16	4.331	1.937	2.622	1.260	0.079	62.0	38.3	13.2	NA310-31	0.354	0.969	0.343	3.000	3/8-24UNF	1.95
2 3/16	4.724	2.189	2.874	1.339	0.079	71.6	45.0	13.2	NA311-35	0.394	1.094	0.343	3.248	3/8-24UNF	2.2
2 7/16	5.118	2.437	3.126	1.417	0.083	81.9	52.2	13.2	NA312-39	0.453	1.220	0.343	3.500	3/8-24UNF	3
2 11/16	5.906	2.689	3.626	1.575	0.083	104	68.2	13.2	NA314-43	0.492	1.343	0.469	4.000	1/2-20UNF	4.7
2 15/16	6.299	2.937	3.937	1.654	0.083	113	77.2	13.2	NA315-47	0.571	1.469	0.500	4.437	5/8-18UNF	5.8

FYH BEARING UNITS USA INC. TEL: 847-487-9111 FAX: 847-487-9222 E-mail: sales@fyhusa.com