



RODAVIGO, S.A.
RODAMIENTOS VIGO, S.A.

www.rodavigo.net

+34 986 288118
Servicio de Att. al Cliente

FYH[®]

SN HOUSINGS

BETTER PROTECTION & EASIER INSTALLATION



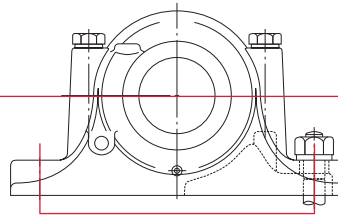
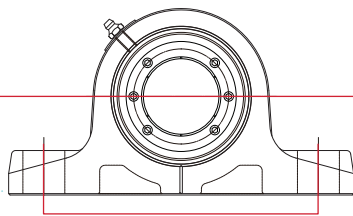
F NO.3036



FYH patented Z LOCK and set screw lock spherical roller bearing units now have SN style housings for the replacement of SN plumber blocks.

COMPARISON OF FYH SN UNITS AND SN PLUMMER BLOCK UNITS

**SAME CENTER HEIGHT
AND MOUNTING PITCH**



	FYH SN UNITS	SN PLUMMER BLOCK UNITS
HOUSING	ONE PIECE DUCTILE IRON	SPLIT GRAY CAST IRON
LOCKING	Z LOCK OR SET SCREW	ADAPTER SLEEVE
SEAL	ORIGINAL ALIGNED TRIPLE LIP ON INNER RING	SINGLE LIP SEAL ON SHAFT
LUBRICATION	CALCIUM SULFONATE SYNTHETIC GREASE	NONE
INSTALLATION	LESS THAN 10 MINUTES	MORE THAN 45 MINUTES

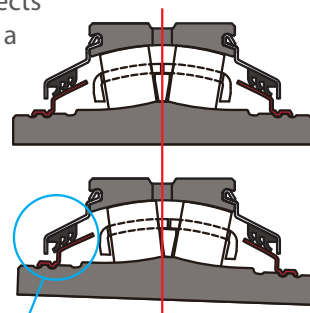


The patented Z-Lock is the first ever tapered bore locking collar system. Just tighten the cap screws properly and the specialized tapered bore collar provides extreme holding power on the shaft without causing any damage. This is a true 360 degree locking mechanism. Disassembly is easily accomplished with two threaded holes in the collar for standard withdrawal dismounting.



FYH ORIGINAL TRIPLE LIP SEAL

The triple-lip seal maintains positive contact with a special sealing ring at virtually any of shaft mis-alignment. Our new patented sealing design protects the bearing against a variety of wet and dry contaminants and dramatically improves bearing life. The ability to accommodate shaft expansion is also available.



Positive seal contact is maintained during mis-alignment at any angle.

Contamination is the single biggest problem that bearings face in applications such as aggregate, mining, forestry, pulp and paper and steel mills. Split plummer block units have single lip rubber seals that contact and wear on the shafting. **FYH's original triple lip seals contact on the inner ring and can handle ±2 degrees of shaft misalignment, plummer block seals are not designed for this amount of misalignment.** Adapter sleeves used in a split plummer blocks require time and skill to install correctly, incorrect installation can allow them to be too tight or too loose. FYH's true concentric Z Lock can be installed much faster and easier than adaptor sleeve locks. **The installation of Z Lock bearings should be able to be completed in less than ten minutes and saves cost in both time and manpower.**

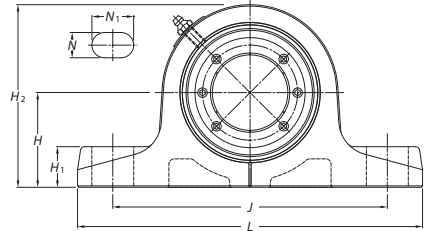
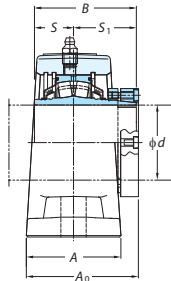


2-Bolt Base Type SN Pillow Block Units

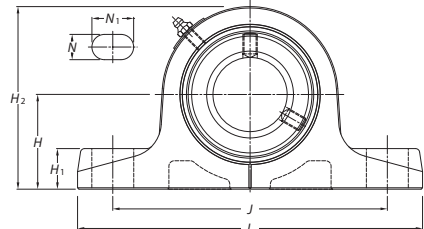
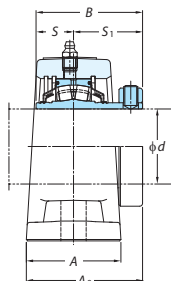
ZS2SN , XS2SN
Cylindrical bore
(with Z-Lock)
(with set screw collar lock)
d 1 3/8 ~ 4 inch
40 ~ 100 mm



ZS2SN



XS2SN



Variations of tolerance of distance from mounting bottom to center of cylindrical bore (ΔH_s)

Housing No.	ΔH_s
2SN408 ~ 2SN409	± 0.15
2SN410 ~ 2SN420	± 0.16

Unit: mm

Shaft Dia. inch mm <i>d</i>	Dimensions inch mm												Unit No.	Bearing No.	Unit No.	Bearing No.	Bolt Size inch mm
	H	L	A	J	N	N ₁	H ₁	H ₂	A ₀	B	S	S ₁					
1 3/8 1 7/16 1 1/2 40	2 3/8	8 1/16	2 3/8	6 1/2	19/32	31/32	31/32	4 13/32	2 23/32	2.531	1	1.531	ZS2SN408-22 ZS2SN408-23 ZS2SN408-24 ZS2SN408	ZS408-22 ZS408-23 ZS408-24 ZS408	XS2SN408-22 XS2SN408-23 XS2SN408-24 XS2SN408	XS408-22 XS408-23 XS408-24 XS408	1/2 M12
1 11/16 1 3/4 45	2 3/8	8 1/16	2 3/8	6 19/32	19/32	7/8	31/32	4 17/32	2 27/32	2.657	1	1.657	ZS2SN409-27 ZS2SN409-28 ZS2SN409	ZS409-27 ZS409-28 ZS409	XS2SN409-27 XS2SN409-28 XS2SN409	XS409-27 XS409-28 XS409	1/2 M12
1 15/16 50 2	2 3/4	10 1/32	2 3/4	8	25/32	1 7/32	1 3/32	5 1/8	3 7/32	2.843	1	1.843	ZS2SN410-31 ZS2SN410 ZS2SN410-32	ZS410-31 ZS410 ZS410-32	XS2SN410-31 XS2SN410 XS2SN410-32	XS410-31 XS410 XS410-32	5/8 M16
55 2 3/16 2 1/4	2 3/4	10 1/32	2 3/4	8	25/32	1 7/32	1 3/16	5 5/16	3 3/16	2.937	1.126	1.811	ZS2SN411 ZS2SN411-35 ZS2SN411-36	ZS411 ZS411-35 ZS411-36	XS2SN411 XS2SN411-35 XS2SN411-36	XS411 XS411-35 XS411-36	5/8 M16
60 2 7/16 2 1/2 65	3 5/32	11 1/32	3 5/32	8 11/16	25/32	1 5/16	1 3/16	6 3/32	3 17/32	3.205	1.252	1.953	ZS2SN412 ZS2SN413-39 ZS2SN413-40 ZS2SN413	ZS412 ZS413-39 ZS413-40 ZS413	XS2SN412 XS2SN413-39 XS2SN413-40 XS2SN413	XS412 XS413-39 XS413-40 XS413	5/8 M16
70 2 11/16 2 3/4 2 15/16 75	3 3/4	12 7/16	3 17/32	10 3/32	31/32	1 11/32	1 1/4	6 15/16	4 1/8	3.594	1.252	2.343	ZS2SN414 ZS2SN415-43 ZS2SN415-44 ZS2SN415-47 ZS2SN415 ZS2SN415-48	ZS414 ZS415-43 ZS415-44 ZS415-47 ZS415 ZS415-48	XS2SN414 XS2SN415-43 XS2SN415-44 XS2SN415-47 XS2SN415 XS2SN415-48	XS414 XS415-43 XS415-44 XS415-47 XS415 XS415-48	7/8 M22
80 3 1/4 85	3 15/16	13 19/32	3 15/16	11 3/32	31/32	1 11/32	1 3/8	7 25/32	4 17/32	4.079	1.516	2.563	ZS2SN416 ZS2SN417-52 ZS2SN417	ZS416 ZS417-52 ZS417	XS2SN416 XS2SN417-52 XS2SN417	XS416 XS417-52 XS417	7/8 M22
3 7/16 3 1/2 90	4 13/32	14 31/32	4 11/32	12 3/16	1 5/32	1 11/16	1 9/16	8 19/32	4 23/32	4.079	1.516	2.563	ZS2SN418-55 ZS2SN418-56 ZS2SN418	ZS418-55 ZS418-56 ZS418	XS2SN418-55 XS2SN418-56 XS2SN418	XS418-55 XS418-56 XS418	1 M27
100 3 15/16 4	4 29/32	16 5/32	4 23/32	13 3/16	1 5/32	1 27/32	1 25/32	9 13/32	5 7/32	4.484	1.626	2.858	ZS2SN420 ZS2SN420-63 ZS2SN420-64	ZS420 ZS420-63 ZS420-64	XS2SN420 XS2SN420-63 XS2SN420-64	XS420 XS420-63 XS420-64	1 M27

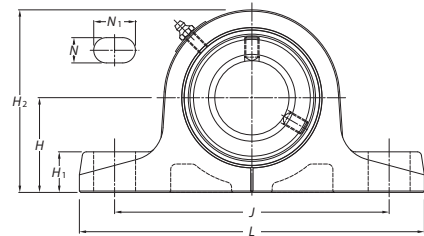
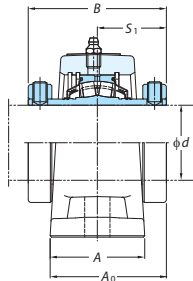
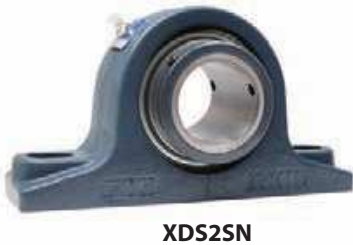
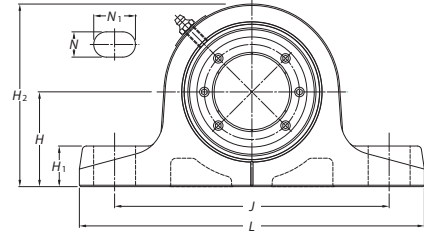
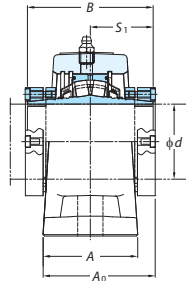


2-Bolt Base Type SN Pillow Block Units

ZDS2SN , XDS2SN
Cylindrical bore
(with Z-Lock (both))
(with set screw collar lock (both))
 $d \ 2\frac{7}{16} \sim 4$ inch
 $60 \sim 100$ mm

Variations of tolerance of distance from mounting bottom to center of cylindrical bore (ΔHs)

Housing No.	Unit: mm ΔHs
2SN412 ~ 2SN420	±0.16



Shaft Dia. inch mm d	Dimensions inch mm											Unit No.	Bearing No.	Unit No.	Bearing No.	Bolt Size inch mm
	H	L	A	J	N	N_1	H_1	H_2	A_0	B	S_1					
60 $2\frac{7}{16}$ $2\frac{1}{2}$	$3\frac{5}{32}$ 80	$11\frac{1}{32}$ 280	$3\frac{5}{32}$ 80	$8\frac{11}{16}$ 220.5	$\frac{25}{32}$ 20	$1\frac{5}{16}$ 33.5	$1\frac{3}{16}$ 30	$6\frac{3}{32}$ 155	$3\frac{17}{32}$ 89.6	3.906	1.953	ZDS2SN412 ZDS2SN413-39 ZDS2SN413-40 ZDS2SN413	ZDS412 ZDS413-39 ZDS413-40 ZDS413	XDS2SN412 XDS2SN413-39 XDS2SN413-40 XDS2SN413	XDS412 XDS413-39 XDS413-40 XDS413	$\frac{5}{8}$ M16
65 $2\frac{11}{16}$ $2\frac{3}{4}$ $2\frac{15}{16}$	$3\frac{3}{4}$ 95	$12\frac{7}{16}$ 316	$3\frac{17}{32}$ 90	$10\frac{3}{32}$ 256.4	$\frac{31}{32}$ 25	$1\frac{11}{32}$ 34.1	$1\frac{1}{4}$ 32	$6\frac{15}{16}$ 176	$4\frac{1}{8}$ 104.5	4.686	2.343	ZDS2SN414 ZDS2SN415-43 ZDS2SN415-44 ZDS2SN415-47 ZDS2SN415 ZDS2SN415-48	ZDS414 ZDS415-43 ZDS415-44 ZDS415-47 ZDS415 ZDS415-48	XDS2SN414 XDS2SN415-43 XDS2SN415-44 XDS2SN415-47 XDS2SN415 XDS2SN415-48	XDS414 XDS415-43 XDS415-44 XDS415-47 XDS415 XDS415-48	$\frac{7}{8}$ M22
75 3	$3\frac{15}{16}$ 100	$13\frac{19}{32}$ 345	$3\frac{15}{16}$ 100	$11\frac{3}{32}$ 281.8	$\frac{31}{32}$ 25	$1\frac{11}{32}$ 34	$1\frac{3}{8}$ 35	$7\frac{25}{32}$ 198	$4\frac{17}{32}$ 115.1	5.126	2.563	ZDS2SN416	ZDS416	XDS2SN416	XDS416	$\frac{7}{8}$ M22
80 $3\frac{1}{4}$	$4\frac{13}{32}$ 112	$13\frac{19}{32}$ 345	$3\frac{15}{16}$ 100	$11\frac{1}{32}$ 280.2	$\frac{25}{32}$ 25	$1\frac{1}{2}$ 38	$1\frac{3}{8}$ 35	$8\frac{9}{32}$ 210	$4\frac{17}{32}$ 115.1	5.126	2.563	ZDS2SN417-52 ZDS2SN417	ZDS417-52 ZDS417	XDS2SN417-52 XDS2SN417	XDS417-52 XDS417	$\frac{7}{8}$ M22
85 $3\frac{7}{16}$ $3\frac{1}{2}$	$4\frac{13}{32}$ 112	$14\frac{31}{32}$ 380	$4\frac{11}{32}$ 110	$12\frac{3}{16}$ 309.9	$1\frac{5}{32}$ 29	$1\frac{11}{16}$ 43.1	$1\frac{9}{16}$ 40	$8\frac{19}{32}$ 218	$4\frac{23}{32}$ 120.1	5.126	2.563	ZDS2SN418-55 ZDS2SN418-56 ZDS2SN418	ZDS418-55 ZDS418-56 ZDS418	XDS2SN418-55 XDS2SN418-56 XDS2SN418	XDS418-55 XDS418-56 XDS418	1 M27
90 $3\frac{7}{16}$ $3\frac{1}{2}$	$4\frac{13}{32}$ 112	$16\frac{5}{32}$ 410	$4\frac{23}{32}$ 120	$13\frac{3}{16}$ 335.2	$1\frac{5}{32}$ 29	$1\frac{27}{32}$ 46.8	$1\frac{25}{32}$ 45	$9\frac{13}{32}$ 239	$5\frac{7}{32}$ 132.6	5.716	2.858	ZDS2SN420 ZDS2SN420-63 ZDS2SN420-64	ZDS420 ZDS420-63 ZDS420-64	XDS2SN420 XDS2SN420-63 XDS2SN420-64	XDS420 XDS420-63 XDS420-64	1 M27



NIPPON PILLOW BLOCK CO., LTD.

