



## PowerGrip® Twin Power® Belts

Gates PowerGrip® Twin Power® Belts have teeth on both sides to provide synchronization from both driving surfaces. This configuration accommodates unique drive designs such as multipoint drives, shaft rotation reversal, and serpentine drives. Twin Power Belts are similar in construction to regular synchronous belts, including nylon-faced teeth on both sides.

### Specifying Twin Power® Belts

PowerGrip Twin Power Belts are specified using the same code as standard PowerGrip belts, except that they include a TP prefix. Thus, a Twin Power PowerGrip GT®2 belt with 8mm pitch, 1600mm pitch length and 30mm width is specified as TP1600-8MGT-30. Similarly, a Twin Power PowerGrip Timing belt with an L pitch, 24" pitch length, and 1" width is specified as TP240L100. A listing of available sizes, both Stock and Standard/Non-stock, are shown below. Standard/Non-stock belts are not stocked products, but no minimum order quantity is required. Standard/Non-stock belts may require manufacturing lead time. Contact your local Gates representative for availability.

PowerGrip GT2 Twin Power belts are available in 3mm and 5mm pitches as Standard/Non-stock.

### Twin Power Drive Selection

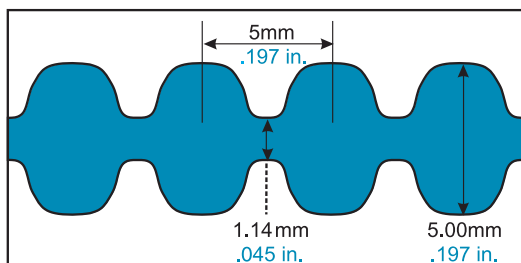
Gates Twin Power Belts can transmit 100% of their maximum rated load capacity from either side of the belt or in combination where the sum of the loads carried by both sides of the belt does not exceed the maximum rating of the belt. For example, a Twin Power Belt rated at 12 HP could be used with 50% of the maximum rated load on one side and 50% on the other; or 90% on one side and 10% on the other.

5mm Pitch PowerGrip® GT®2 Twin Power® Belt Lengths (Standard/Non-stock)

Part No.	Pitch Length		No. of Teeth
	(mm)	(in)	
TP5MR-400	400	15.75	80
TP5MR-425	425	16.73	85
TP5MR-450	450	17.72	90
TP5MR-500	500	19.69	100
TP5MR-535	535	21.06	107
TP5MR-565	565	22.24	113
TP5MR-575	575	22.64	115
TP5MR-580	580	22.83	116
TP5MR-600	600	23.62	120
TP5MR-625	625	24.61	125
TP5MR-650	650	25.59	130
TP5MR-700	700	27.56	140
TP5MR-710	710	27.95	142
TP5MR-740	740	29.13	148
TP5MR-745	745	29.33	149
TP5MR-750	750	29.53	150
TP5MR-765	765	30.12	153
TP5MR-790	790	31.10	158
TP5MR-800	800	31.50	160
TP5MR-815	815	32.09	163
TP5MR-830	830	32.68	166
TP5MR-835	835	32.87	167
TP5MR-850	850	33.46	170
TP5MR-870	870	34.25	174
TP5MR-890	890	35.04	178
TP5MR-900	900	35.43	180
TP5MR-925	925	36.42	185
TP5MR-950	950	37.40	190
TP5MR-975	975	38.39	195
TP5MR-985	985	38.78	197
TP5MR-1000	1000	39.37	200

Part No.	Pitch Length		No. of Teeth
	(mm)	(in)	
TP5MR-1050	1050	41.34	210
TP5MR-1115	1115	43.90	223
TP5MR-1125	1125	44.29	225
TP5MR-1150	1150	45.28	230
TP5MR-1195	1195	47.05	239
TP5MR-1250	1250	49.21	250
TP5MR-1270	1270	50.00	254
TP5MR-1295	1295	50.98	259
TP5MR-1300	1300	51.18	260
TP5MR-1375	1375	54.13	275
TP5MR-1420	1420	55.91	284
TP5MR-1450	1450	57.09	290
TP5MR-1575	1575	62.01	315
TP5MR-1595	1595	62.80	319
TP5MR-1635	1635	64.37	327
TP5MR-1690	1690	66.54	338
TP5MR-1790	1790	70.47	358
TP5MR-1800	1800	70.87	360
TP5MR-1895	1895	74.61	379
TP5MR-1945	1945	76.57	389
TP5MR-2000	2000	78.74	400
TP5MR-2110	2110	83.07	422
TP5MR-2250	2250	88.58	450
TP5MR-2525	2525	99.41	505
TP5MR-2760	2760	108.66	552
TP5MR-3120	3120	122.83	624
TP5MR-3170	3170	124.80	634
TP5MR-3200	3200	125.98	640
TP5MR-3430	3430	135.04	686
TP5MR-3800	3800	149.61	760

5M PowerGrip® GT®2 Twin Power® – Reference Dimensions



5MR Twin Power® Belt Widths (Standard/Non-stock)

Belt Width Code	Belt Width	
	(mm)	(in)
09	9	0.354
15	15	0.591
25	25	0.984





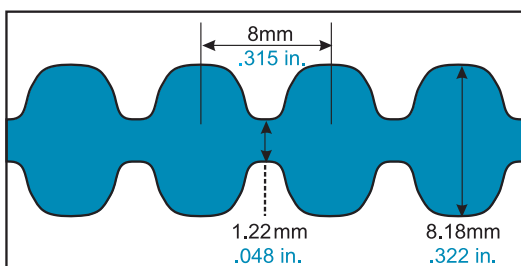
**PowerGrip® Twin Power® Belts**

**8mm Pitch PowerGrip® GT\*2 Twin Power® Stock Belt Lengths**

Part No.	Pitch Length		No. of Teeth
	(mm)	(in)	
TP560-8MGT-20	560	22.05	70
TP600-8MGT-20	600	23.62	75
TP640-8MGT-20	640	25.20	80
TP720-8MGT-20	720	28.35	90
TP800-8MGT-20	800	31.50	100
TP840-8MGT-20	840	33.07	105
TP880-8MGT-20	880	34.65	110
TP920-8MGT-20	920	36.22	115
TP960-8MGT-20	960	37.80	120
TP1040-8MGT-20	1040	40.94	130
TP1064-8MGT-20	1064	41.89	133
TP1120-8MGT-20	1120	44.09	140
TP1160-8MGT-20	1160	45.67	146
TP1200-8MGT-20	1200	47.24	150
TP1224-8MGT-20	1224	48.19	153

Part No.	Pitch Length		No. of Teeth
	(mm)	(in)	
TP1280-8MGT-20	1280	50.39	160
TP1440-8MGT-20	1440	56.69	180
TP1512-8MGT-20	1512	59.53	189
TP1600-8MGT-20	1600	62.99	200
TP1760-8MGT-20	1760	69.29	220
TP1800-8MGT-20	1800	70.87	225
TP2000-8MGT-20	2000	78.74	250
TP2200-8MGT-20	2200	86.61	275
TP2400-8MGT-20	2400	94.49	300
TP2600-8MGT-20	2600	102.36	325
TP2800-8MGT-20	2800	110.24	350
TP3048-8MGT-20	3048	120.00	381
TP3280-8MGT-20	3280	129.13	410
TP3600-8MGT-20	3600	141.73	450
TP4400-8MGT-20	4400	173.23	550

**8M PowerGrip® GT\*2 Twin Power® – Reference Dimensions**



**8MGT Twin Power® Belt Widths**

Belt Width Code	Belt Width	
	(mm)	(in)
20	20	0.787
30	30	1.181
50	50	1.969
85	85	3.346

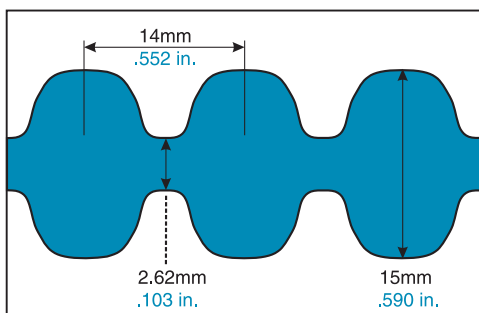
**14mm Pitch PowerGrip® GT\*2 Twin Power® Stock Belt Lengths**

Part No.	Pitch Length		No. of Teeth
	(mm)	(in)	
TP966-14MGT	966	38.03	69
TP1190-14MGT	1190	46.85	85
TP1400-14MGT	1400	55.12	100
TP1610-14MGT	1610	63.39	115
TP1778-14MGT	1778	70.00	127
TP1890-14MGT	1890	74.41	135
TP2100-14MGT	2100	82.68	150
TP2310-14MGT	2310	90.94	165
TP2450-14MGT	2450	96.46	175
TP2590-14MGT	2590	101.97	185
TP2800-14MGT	2800	110.24	200

Part No.	Pitch Length		No. of Teeth
	(mm)	(in)	
TP3150-14MGT	3150	124.02	225
TP3360-14MGT	3360	132.28	240
TP3500-14MGT	3500	137.80	250
TP3850-14MGT	3850	151.57	275
TP4326-14MGT	4326	170.31	309
TP4578-14MGT	4578	180.24	327
TP4956-14MGT*	4956	195.12	354
TP5320-14MGT*	5320	209.45	380
TP5740-14MGT*	5740	225.98	410
TP6160-14MGT*	6160	242.52	440
TP6860-14MGT*	6860	270.08	490

\* Only available in 40, 55, and 85 mm widths

**14M PowerGrip® GT\*2 Twin Power® – Reference Dimensions**



**14MGT Twin Power® Belt Widths**

Belt Width Code	Belt Width	
	(mm)	(in)
40	40	1.575
55	55	2.165
85	85	3.346
115	115	4.528
170	170	6.693





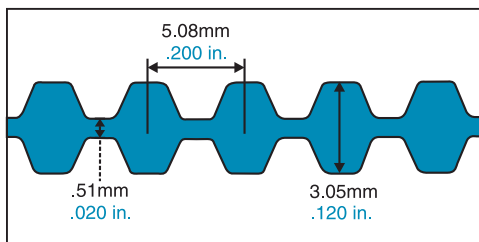
**PowerGrip® Twin Power® Belts**

**1/5" (0.200") Pitch XL PowerGrip® Twin Power® Timing Belt Lengths (Standard/Non-stock)**

Part No.	Pitch Length (in)	No. of Teeth
TP126XL	12.60	63
TP128XL	12.80	64
TP130XL	13.00	65
TP132XL	13.20	66
TP134XL	13.40	67
TP136XL	13.60	68
TP138XL	13.80	69
TP140XL	14.00	70
TP142XL	14.20	71
TP144XL	14.40	72
TP146XL	14.60	73
TP148XL	14.80	74
TP150XL	15.00	75
TP152XL	15.20	76
TP156XL	15.60	78
TP158XL	15.80	79
TP160XL	16.00	80
TP162XL	16.20	81
TP166XL	16.60	83
TP168XL	16.80	84
TP170XL	17.00	85
TP172XL	17.20	86
TP174XL	17.40	87
TP176XL	17.60	88
TP178XL	17.80	89
TP180XL	18.00	90
TP182XL	18.20	91
TP184XL	18.40	92
TP186XL	18.60	93
TP188XL	18.80	94
TP190XL	19.00	95
TP192XL	19.20	96
TP200XL	20.00	100
TP202XL	20.20	101
TP204XL	20.40	102
TP206XL	20.60	103
TP210XL	21.00	105
TP212XL	21.20	106
TP214XL	21.40	107
TP218XL	21.80	109
TP220XL	22.00	110
TP222XL	22.20	111
TP226XL	22.60	113
TP228XL	22.80	114
TP230XL	23.00	115
TP232XL	23.20	116
TP234XL	23.40	117
TP236XL	23.60	118
TP240XL	24.00	120
TP244XL	24.40	122
TP246XL	24.60	123
TP250XL	25.00	125
TP254XL	25.40	127
TP258XL	25.80	129

Part No.	Pitch Length (in)	No. of Teeth
TP260XL	26.00	130
TP262XL	26.20	131
TP264XL	26.40	132
TP266XL	26.60	133
TP268XL	26.80	134
TP274XL	27.40	137
TP280XL	28.00	140
TP286XL	28.60	143
TP290XL	29.00	145
TP296XL	29.60	148
TP300XL	30.00	150
TP306XL	30.60	153
TP310XL	31.00	155
TP316XL	31.60	158
TP320XL	32.00	160
TP322XL	32.20	161
TP330XL	33.00	165
TP338XL	33.80	169
TP340XL	34.00	170
TP344XL	34.40	172
TP348XL	34.80	174
TP350XL	35.00	175
TP352XL	35.20	176
TP362XL	36.20	181
TP370XL	37.00	185
TP380XL	38.00	190
TP384XL	38.40	192
TP390XL	39.00	195
TP400XL	40.00	200
TP412XL	41.20	206
TP420XL	42.00	210
TP424XL	42.40	212
TP432XL	43.20	216
TP438XL	43.80	219
TP444XL	44.40	222
TP450XL	45.00	225
TP454XL	45.40	227
TP460XL	46.00	230
TP468XL	46.80	234
TP480XL	48.00	240
TP492XL	49.20	246
TP498XL	49.80	249
TP500XL	50.00	250
TP506XL	50.60	253
TP524XL	52.40	262
TP570XL	57.00	285
TP580XL	58.00	290
TP592XL	59.20	296
TP612XL	61.20	306
TP630XL	63.00	315
TP672XL	67.20	336
TP690XL	69.00	345
TP770XL	77.00	385
TP850XL	85.00	425

**XL PowerGrip® Twin Power® – Reference Dimensions**



**XL Twin Power® Belt Widths (Standard/Non-stock)**

Belt Width Code	Belt Width (in)
025	0.250
037	0.375





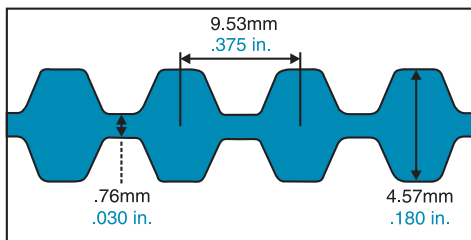
**PowerGrip® Twin Power® Belts**

**3/8" (0.375") Pitch L PowerGrip® Twin Power® Timing Stock Belt Lengths**

Part No.	Pitch Length (in)	No. of Teeth
TP150L	15.00	40
TP154L	15.38	41
TP158L	15.75	42
TP165L	16.50	44
TP173L	17.25	46
TP176L	17.63	47
TP187L	18.75	50
TP195L	19.50	52
TP199L	19.88	53
TP210L	21.00	56
TP218L	21.75	58
TP225L	22.50	60
TP240L	24.00	64
TP248L	24.75	66
TP255L	25.50	68
TP263L	26.25	70
TP270L	27.00	72
TP285L	28.50	76
TP300L	30.00	80

Part No.	Pitch Length (in)	No. of Teeth
TP315L	31.50	84
TP322L	32.25	86
TP345L	34.50	92
TP367L	36.75	98
TP375L	37.50	100
TP390L	39.00	104
TP420L	42.00	112
TP446L	44.63	119
TP450L	45.00	120
TP480L	48.00	128
TP510L	51.00	136
TP540L	54.00	144
TP566L	56.63	151
TP600L	60.00	160
TP660L	66.00	176
TP817L	81.75	218
TP900L	90.00	240
TP945L	94.50	252

**L PowerGrip® Twin Power® – Reference Dimensions**



**L Twin Power® Belt Widths**

Belt Width Code	Belt Width (in)
050	0.500
075	0.750
100	1.000





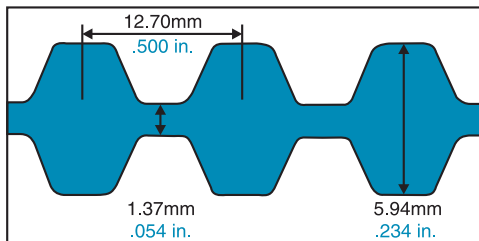
**PowerGrip® Twin Power® Belts**

**1/2" (0.500") Pitch H PowerGrip® Twin Power® Timing Stock Belt Lengths**

Part No.	Pitch Length (in)	No. of Teeth
TP210H	21.00	42
TP220H	22.00	44
TP225H	22.50	45
TP230H	23.00	46
TP240H	24.00	48
TP270H	27.00	54
TP300H	30.00	60
TP315H	31.50	63
TP320H	32.00	64
TP330H	33.00	66
TP340H	34.00	68
TP350H	35.00	70
TP360H	36.00	72
TP370H	37.00	74
TP390H	39.00	78
TP400H	40.00	80
TP410H	41.00	82
TP415H	41.50	83
TP420H	42.00	84
TP445H	44.50	89
TP450H	45.00	90
TP455H	45.50	91
TP465H	46.50	93
TP480H	48.00	96
TP490H	49.00	98
TP495H	49.50	99
TP510H	51.00	102
TP525H	52.50	105
TP540H	54.00	108
TP555H	55.50	111
TP560H	56.00	112
TP570H	57.00	114
TP585H	58.50	117

Part No.	Pitch Length (in)	No. of Teeth
TP600H	60.00	120
TP605H	60.50	121
TP630H	63.00	126
TP645H	64.50	129
TP655H	65.50	131
TP660H	66.00	132
TP700H	70.00	140
TP730H	73.00	146
TP750H	75.00	150
TP775H	77.50	155
TP780H	78.00	156
TP800H	80.00	160
TP820H	82.00	164
TP840H	84.00	168
TP850H	85.00	170
TP900H	90.00	180
TP960H	96.00	192
TP1000H	100.00	200
TP1100H	110.00	220
TP1140H	114.00	228
TP1180H	118.00	236
TP1250H	125.00	250
TP1400H	140.00	280
TP1510H	151.00	302
TP1550H	155.00	310
TP1645H	164.50	329
TP1680H	168.00	336
TP1700H	170.00	340
TP2090H	209.00	418
TP2100H	210.00	420
TP2120H	212.00	424
TP2330H	233.00	466

**H PowerGrip® Twin Power® – Reference Dimensions**



**H Twin Power® Belt Widths**

Belt Width Code	Belt Width (in)
75	0.75
100	1.00
150	1.50
200	2.00
300	3.00





## PowerGrip® Twin Power® Belt Drive Selection Procedure

To select a Gates PowerGrip® Twin Power® Belt drive, you need to know only five facts:

1. DriveN horsepower requirements.
2. RPM of the driveR shaft.
3. RPM of the driveN shafts.
4. Approximate geometry for the drive.
5. Hours per day operation.

### Step 1 Determine Design Horsepower

**Design Horsepower = (Service Factor) x (Horsepower Requirement)**

- A. To calculate the **design horsepower**, it is necessary to determine the **service factor** for each type of driveN unit. Using the Service Factor Chart on Page 11, determine the type of driveR machine.
- B. Using this chart, determine the **service factor** for each driveN machine, based on the type of driveN machine and the type of service. Add any additional service factors required. Drives with multiple function driveN machines must have an appropriate service factor applied to each type of driveN machine.
- C. Multiply the horsepower requirement of the drive by the service factor selected. This yields the **design horsepower** for the drive.
- D. Add up the driveN loads. On multiple function driveN machines, add up the design horsepower for each driveN unit to determine the total horsepower for the drive.

### Step 2 Select Belt Pitch

Locate the design horsepower along the bottom of the Belt Pitch Selection Guide on Page 7. Read up from the RPM of the smaller sprocket (faster shaft). The belt pitch indicated in the area surrounding the point of intersection is the one that should be used. If the point of intersection falls outside any specific area, contact Gates Product Application Engineering. If the point is near one of the lines, a good drive can be designed with the belt pitch on either side of the line. Design drives using both belt pitches and select the most economical drive consistent with the other requirements.

### Step 3 Select Sprockets and Determine Belt Length

A typical Twin Power Belt application will have three or more sprockets; although in some drives, one of the driveN sprockets may be unloaded and act only as an idler. It may be possible to use the Drive Selection Table as an aid to determine the required sprockets.

- A. For drives with standard motor speeds, refer to the appropriate motor speed column. Read down the

column and locate the driveN machine speed nearest the requirements for each driveN sprocket using a common size motor sprocket.

- B. For all other speeds:

1. Find the speed ratio by dividing the RPM of the faster shaft by the RPM of the slower shaft for each driveN sprocket in the drive.
2. Read down the speed ratio column and locate the speed ratio nearest the requirements. Select a driveN sprocket using a common size driveN sprocket which yields the speeds nearest the requirements.

- C. Required belt lengths are most easily determined by measuring directly from a drawing of the drive layout. For computer aided assistance in determining the correct belt length, contact Gates Product Application Engineering.

### Step 4 Calculate Horsepower Rating

Belt Width Selection tables on pages 125 through 130 show the Horsepower Ratings. Each table represents one specific pitch belt. Read down the first column to the speed of the faster shaft, then across to the column headed by the small sprocket rotating at this speed. This value is the Horsepower Rating. Multiply the Horsepower Rating by the Width Multipliers to determine the Horsepower Rating for various width belts.

### Step 5 Select Belt Width

- A. Locate the critical sprocket in the drive. This sprocket may be either the smaller diameter sprocket or a larger diameter sprocket with less than six teeth in mesh, depending on the loads transmitted by each sprocket

1. Determine the number of teeth in mesh using the formula below:

$$\text{Teeth in Mesh} = \frac{\text{Angle of Sprocket Contact}}{360} \times \text{Number of Sprocket Teeth}$$

2. Select the appropriate teeth in mesh factor (K<sub>tm</sub>) from Page 175.
3. Correct the horsepower rating by multiplying the teeth in mesh factor (K<sub>tm</sub>) by the horsepower rating from Step 4.
4. Repeat this procedure for each sprocket to locate the critical sprocket in the drive. Select the proper belt width on the basis of the critical sprocket parameters.





**PowerGrip® Twin Power® Belt Drive Selection Procedure**

**Step 6 Installation and Takeup**

Because of its high resistance to elongation, there is no need to retension PowerGrip® Twin Power® Belt drives. However, some adjustments must be provided when installing timing belt drives, as with nearly all power transmission methods, because of manufacturing tolerances, wear of pressure surfaces and tensioning requirements. Center distance adjustment values are shown in the Center Distance Allowance Table on Page 182.

**Step 7 Check and Specify Stock Drive Components**

- A. Check the sprockets selected against the design requirements using the dimensions given in the Sprocket Specifications Tables on Pages 131 through 151.
- B. Using the Sprocket Specifications Tables, determine the **bushing size** to use with each sprocket. Check the **bore range** against the design requirements.
- C. Specify all stock components using proper designation for the belt, sprockets and bushings.

**NOTE:** Reference page 6 for data collection worksheet and page 174 for information on surveying multipoint drive layouts.

**5M PowerGrip® GT®2 Twin Power® Rating Table**

RPM of Faster Shaft	Base Rated Horsepower for Small Sprocket (Number of Grooves and Pitch Diameter, Inches)																											
	18	19	20	21	22	23	24	25	26	28	30	32	34	36	38	40	44	45	48	50	52	56	60	64	68			
10	0.01	0.01	0.01	0.01	0.01	0.01	0.01	0.01	0.01	0.01	0.02	0.02	0.02	0.02	0.02	0.02	0.03	0.03	0.03	0.03	0.03	0.03	0.04	0.04	0.04	0.04		
20	0.01	0.02	0.02	0.02	0.02	0.02	0.02	0.02	0.02	0.03	0.03	0.03	0.04	0.04	0.04	0.04	0.05	0.05	0.05	0.06	0.06	0.07	0.07	0.07	0.08	0.08		
40	0.03	0.03	0.03	0.03	0.04	0.04	0.04	0.04	0.05	0.05	0.06	0.06	0.07	0.07	0.08	0.08	0.09	0.10	0.10	0.11	0.11	0.12	0.13	0.14	0.15	0.15		
60	0.04	0.04	0.04	0.05	0.05	0.06	0.06	0.06	0.07	0.07	0.08	0.09	0.10	0.11	0.11	0.12	0.13	0.14	0.15	0.16	0.16	0.18	0.19	0.21	0.22			
100	0.06	0.06	0.07	0.07	0.08	0.09	0.09	0.10	0.11	0.12	0.13	0.14	0.15	0.17	0.18	0.19	0.21	0.22	0.24	0.25	0.26	0.29	0.31	0.33	0.35			
200	0.10	0.11	0.12	0.14	0.15	0.16	0.17	0.18	0.20	0.22	0.24	0.27	0.29	0.31	0.33	0.36	0.40	0.41	0.45	0.47	0.49	0.54	0.58	0.62	0.67			
300	0.14	0.16	0.18	0.19	0.21	0.23	0.25	0.26	0.28	0.31	0.35	0.38	0.41	0.45	0.48	0.51	0.58	0.60	0.64	0.68	0.71	0.77	0.84	0.90	0.96			
400	0.18	0.20	0.22	0.25	0.27	0.29	0.31	0.34	0.36	0.40	0.45	0.49	0.53	0.58	0.62	0.66	0.75	0.77	0.83	0.88	0.92	1.00	1.08	1.17	1.25			
500	0.22	0.24	0.27	0.30	0.33	0.35	0.38	0.41	0.44	0.49	0.54	0.60	0.65	0.70	0.76	0.81	0.91	0.94	1.02	1.07	1.12	1.22	1.33	1.43	1.53			
600	0.25	0.28	0.32	0.35	0.38	0.41	0.45	0.48	0.51	0.57	0.64	0.70	0.76	0.83	0.89	0.95	1.08	1.11	1.20	1.26	1.32	1.44	1.56	1.68	1.80			
800	0.31	0.36	0.40	0.44	0.49	0.53	0.57	0.61	0.65	0.74	0.82	0.90	0.98	1.07	1.15	1.23	1.39	1.43	1.55	1.63	1.70	1.86	2.02	2.17	2.32			
1000	0.37	0.43	0.48	0.53	0.58	0.64	0.69	0.74	0.79	0.89	1.00	1.10	1.20	1.30	1.40	1.49	1.69	1.74	1.89	1.98	2.08	2.27	2.46	2.65	2.83			
1200	0.43	0.49	0.56	0.62	0.68	0.74	0.80	0.86	0.92	1.04	1.16	1.28	1.40	1.52	1.64	1.75	1.98	2.04	2.21	2.33	2.44	2.66	2.89	3.11	3.33			
1400	0.49	0.56	0.63	0.70	0.77	0.84	0.91	0.98	1.05	1.19	1.33	1.47	1.60	1.74	1.87	2.00	2.27	2.34	2.53	2.66	2.79	3.05	3.31	3.56	3.81			
1600	0.54	0.62	0.70	0.78	0.86	0.94	1.02	1.10	1.18	1.33	1.49	1.64	1.80	1.95	2.10	2.25	2.55	2.62	2.85	2.99	3.14	3.43	3.71	4.00	4.28			
1800	0.59	0.68	0.77	0.86	0.95	1.03	1.12	1.21	1.30	1.47	1.65	1.82	1.99	2.16	2.32	2.49	2.82	2.91	3.15	3.31	3.47	3.80	4.11	4.43	4.74			
2000	0.64	0.74	0.83	0.93	1.03	1.13	1.23	1.32	1.42	1.61	1.80	1.99	2.17	2.36	2.54	2.73	3.09	3.18	3.45	3.63	3.80	4.15	4.50	4.84	5.18			
2400	0.73	0.85	0.96	1.08	1.19	1.31	1.42	1.53	1.65	1.87	2.10	2.32	2.54	2.75	2.97	3.18	3.61	3.72	4.03	4.24	4.44	4.85	5.25	5.65	6.04			
2800	0.81	0.95	1.08	1.21	1.35	1.48	1.61	1.74	1.87	2.13	2.38	2.63	2.89	3.14	3.38	3.63	4.11	4.23	4.59	4.82	5.05	5.52	5.97	6.41	6.85			
3200	0.89	1.05	1.19	1.34	1.49	1.64	1.79	1.93	2.08	2.37	2.66	2.94	3.22	3.50	3.78	4.05	4.59	4.72	5.12	5.38	5.64	6.15	6.65	7.14	7.61			
3600	0.97	1.14	1.30	1.47	1.64	1.80	1.96	2.12	2.29	2.61	2.92	3.24	3.55	3.86	4.16	4.46	5.05	5.20	5.63	5.92	6.20	6.75	7.29	7.82	8.33			
4000	1.04	1.23	1.41	1.59	1.77	1.95	2.13	2.31	2.48	2.83	3.18	3.52	3.86	4.20	4.53	4.85	5.49	5.65	6.12	6.43	6.73	7.32	7.90	8.45	8.99			
5000	1.20	1.43	1.65	1.87	2.09	2.30	2.52	2.73	2.95	3.37	3.78	4.19	4.59	4.99	5.38	5.77	6.51	6.70	7.24	7.59	7.93	8.60	9.23	9.84	10.4			
6000	1.34	1.60	1.86	2.12	2.37	2.62	2.88	3.12	3.37	3.85	4.33	4.80	5.26	5.71	6.15	6.58	7.41	7.61	8.20	8.57	8.94	9.64	10.3	10.9				
8000	1.56	1.89	2.21	2.54	2.86	3.17	3.48	3.78	4.09	4.68	5.26	5.81	6.35	6.88	7.38	7.86	8.76	8.97	9.57	9.94								
10000	1.69	2.08	2.46	2.84	3.22	3.58	3.94	4.28	4.63	5.29	5.93	6.54	7.11	7.65	8.15	8.62												
12000	1.75	2.19	2.61	3.04	3.45	3.84	4.23	4.61	4.98	5.67	6.33																	
14000	1.72	2.20	2.65	3.10	3.54	3.95	4.36	4.74	5.11	5.79																		

Shaded area indicates drive conditions where reduced service life can be expected.

Corrected Horsepower Rating = [Base Rating] x [Belt Width Multiplier]

**5M PowerGrip® GT®2 Width Multipliers**

Belt Width (mm)	Width Multiplier
9	1.00
15	1.67
25	2.78





**8M PowerGrip® GT®2 Twin Power® Rating Table**

RPM of Faster Shaft	Rated Horsepower for Small Sprocket (Number of Grooves and Pitch Diameter, Inches)																											
	22	24	25	26	27	28	29	30	31	32	33	34	35	36	37	38	39	40	42	44	46	48	50	53	56	64	72	80
10	0.07	0.07	0.08	0.08	0.09	0.09	0.10	0.10	0.11	0.11	0.12	0.12	0.12	0.13	0.13	0.14	0.14	0.15	0.16	0.16	0.17	0.18	0.19	0.20	0.22	0.25	0.29	0.32
20	0.12	0.14	0.15	0.16	0.17	0.18	0.19	0.20	0.20	0.21	0.22	0.23	0.24	0.25	0.26	0.27	0.27	0.28	0.30	0.32	0.33	0.35	0.37	0.39	0.42	0.49	0.55	0.62
40	0.24	0.27	0.29	0.31	0.32	0.34	0.36	0.37	0.39	0.41	0.42	0.44	0.46	0.48	0.49	0.51	0.53	0.54	0.58	0.61	0.64	0.68	0.71	0.76	0.81	0.94	1.07	1.20
60	0.35	0.40	0.42	0.45	0.47	0.50	0.52	0.55	0.57	0.60	0.62	0.65	0.67	0.69	0.72	0.74	0.77	0.79	0.84	0.89	0.94	0.99	1.04	1.11	1.18	1.38	1.57	1.76
100	0.55	0.63	0.68	0.72	0.76	0.80	0.84	0.88	0.92	0.96	1.00	1.04	1.08	1.12	1.16	1.20	1.24	1.28	1.36	1.44	1.52	1.60	1.68	1.80	1.91	2.23	2.54	2.84
200	1.04	1.20	1.28	1.36	1.44	1.52	1.59	1.67	1.75	1.83	1.91	1.98	2.06	2.14	2.22	2.29	2.37	2.45	2.60	2.75	2.91	3.06	3.21	3.44	3.67	4.27	4.87	5.46
300	1.51	1.74	1.86	1.97	2.09	2.20	2.32	2.44	2.55	2.66	2.78	2.89	3.01	3.12	3.23	3.35	3.46	3.57	3.80	4.02	4.25	4.47	4.70	5.03	5.36	6.24	7.12	7.99
400	1.96	2.27	2.42	2.57	2.72	2.87	3.02	3.18	3.33	3.48	3.63	3.78	3.93	4.07	4.22	4.37	4.52	4.67	4.97	5.26	5.56	5.85	6.14	6.58	7.02	8.17	9.32	10.5
500	2.40	2.78	2.97	3.16	3.34	3.53	3.71	3.90	4.09	4.27	4.46	4.64	4.83	5.01	5.19	5.38	5.56	5.74	6.11	6.47	6.84	7.20	7.56	8.10	8.64	10.1	11.5	12.9
600	2.83	3.28	3.50	3.73	3.95	4.17	4.39	4.62	4.84	5.06	5.27	5.50	5.71	5.93	6.15	6.37	6.59	6.80	7.24	7.67	8.10	8.53	8.96	9.60	10.2	11.9	13.6	15.3
700	3.26	3.78	4.03	4.29	4.55	4.80	5.06	5.32	5.57	5.83	6.08	6.34	6.59	6.84	7.09	7.35	7.60	7.85	8.35	8.85	9.35	9.84	10.3	11.1	11.8	13.8	15.7	17.6
800	3.68	4.26	4.55	4.85	5.14	5.43	5.72	6.01	6.30	6.59	6.88	7.17	7.45	7.74	8.02	8.31	8.60	8.88	9.45	10.0	10.6	11.1	11.7	12.5	13.4	15.6	17.8	20.0
870	3.96	4.60	4.91	5.23	5.55	5.86	6.18	6.49	6.80	7.12	7.43	7.74	8.05	8.36	8.67	8.98	9.29	9.60	10.2	10.8	11.4	12.0	12.7	13.6	14.5	16.9	19.2	21.6
1000	4.49	5.22	5.58	5.94	6.30	6.66	7.02	7.38	7.73	8.09	8.44	8.80	9.15	9.50	9.86	10.2	10.6	10.9	11.6	12.3	13.0	13.7	14.4	15.4	16.5	19.2	21.9	24.5
1160	5.13	5.97	6.38	6.80	7.21	7.62	8.03	8.45	8.86	9.26	9.67	10.1	10.5	10.9	11.3	11.7	12.1	12.5	13.3	14.1	14.9	15.7	16.5	17.7	18.9	22.0	25.1	28.1
1200	5.29	6.15	6.58	7.01	7.44	7.86	8.29	8.71	9.13	9.56	9.98	10.4	10.8	11.2	11.7	12.1	12.5	12.9	13.7	14.6	15.4	16.2	17.0	18.3	19.5	22.7	25.9	29.0
1400	6.07	7.07	7.56	8.06	8.55	9.04	9.53	10.0	10.5	11.0	11.5	12.0	12.5	12.9	13.4	13.9	14.4	14.9	15.8	16.8	17.7	18.7	19.6	21.0	22.4	26.1	29.8	33.4
1600	6.84	7.97	8.53	9.09	9.65	10.2	10.8	11.3	11.9	12.4	13.0	13.5	14.1	14.6	15.2	15.7	16.3	16.8	17.9	19.0	20.0	21.1	22.2	23.8	25.3	29.5	33.6	37.7
1750	7.41	8.64	9.25	9.86	10.5	11.1	11.7	12.3	12.9	13.5	14.1	14.7	15.3	15.9	16.5	17.1	17.6	18.2	19.4	20.6	21.7	22.9	24.1	25.8	27.5	32.0	36.5	40.8
2000	8.35	9.73	10.4	11.1	11.8	12.5	13.2	13.9	14.5	15.2	15.9	16.6	17.2	17.9	18.6	19.3	19.9	20.6	21.9	23.2	24.5	25.8	27.2	29.1	31.0	36.1	41.1	45.9
2400	9.81	11.4	12.3	13.1	13.9	14.7	15.5	16.3	17.1	17.9	18.7	19.5	20.3	21.1	21.9	22.7	23.5	24.3	25.8	27.4	28.9	30.5	32.0	34.3	36.5	42.4	48.2	53.8
2800	11.2	13.1	14.1	15.0	15.9	16.9	17.8	18.7	19.7	20.6	21.5	22.4	23.3	24.2	25.1	26.0	26.9	27.8	29.6	31.4	33.2	34.9	36.7	39.2	41.8	48.5	54.9	61.2
3200	12.6	14.8	15.8	16.9	17.9	19.0	20.0	21.1	22.1	23.2	24.2	25.2	26.3	27.3	28.3	29.3	30.3	31.3	33.3	35.3	37.3	39.2	41.2	44.1	46.9	54.2	61.3	
3450	13.5	15.8	16.9	18.0	19.2	20.3	21.4	22.5	23.6	24.8	25.9	27.0	28.1	29.1	30.2	31.3	32.4	33.5	35.6	37.7	39.8	41.9	43.9	47.0	50.0	57.7	65.1	
4000	15.3	17.9	19.2	20.5	21.8	23.1	24.4	25.6	26.9	28.2	29.4	30.7	31.9	33.1	34.4	35.6	36.8	38.0	40.4	42.8	45.1	47.4	49.7	53.1	56.4			
4500	16.9	19.8	21.3	22.7	24.1	25.5	27.0	28.4	29.8	31.1	32.5	33.9	35.3	36.6	38.0	39.3	40.6	42.0	44.6	47.2	49.7	52.2	54.7	58.3				
5000	18.5	21.7	23.2	24.8	26.4	27.9	29.5	31.0	32.5	34.0	35.5	37.0	38.5	40.0	41.4	42.9	44.3	45.7	48.6	51.3	54.1	56.7	59.4					
5500	20.0	23.5	25.2	26.9	28.6	30.2	31.9	33.6	35.2	36.8	38.4	40.0	41.6	43.2	44.7	46.3	47.8	49.3	52.3	55.3								

Note: 25, 27, 29, 31, 33, 35, 37, 39, 42, 46, 50 and 53 groove sprockets are only available as stock products in 20 and 30mm widths.

Corrected Horsepower Rating = [Base Rating] x [Belt Width Multiplier]

**8M PowerGrip® GT®2 Width Multipliers**

Belt Width (mm)	Width Multiplier
20	1.00
30	1.57
50	2.73
85	4.75





**14M PowerGrip® GT®2 Twin Power® Rating Table**

RPM of Faster Shaft	Base Rated Horsepower for Small Sprocket (Number of Grooves and Pitch Diameter, Inches)																								
	28	29	30	31	32	33	34	35	36	37	38	39	40	42	44	46	48	50	52	56	60	64	68	72	80
10	0.56	0.58	0.60	0.63	0.65	0.67	0.70	0.72	0.74	0.76	0.79	0.81	0.83	0.88	0.92	0.97	1.01	1.06	1.10	1.19	1.28	1.37	1.46	1.55	1.72
20	1.04	1.09	1.13	1.18	1.22	1.27	1.31	1.35	1.40	1.44	1.48	1.53	1.57	1.66	1.74	1.83	1.91	2.00	2.08	2.25	2.42	2.59	2.75	2.92	3.25
40	1.95	2.04	2.12	2.21	2.29	2.37	2.46	2.54	2.62	2.70	2.79	2.87	2.95	3.11	3.27	3.44	3.60	3.76	3.92	4.24	4.55	4.87	5.18	5.49	6.11
60	2.81	2.94	3.06	3.18	3.30	3.42	3.54	3.66	3.78	3.90	4.02	4.14	4.26	4.49	4.73	4.96	5.19	5.43	5.66	6.12	6.58	7.03	7.49	7.94	8.83
100	4.44	4.64	4.83	5.02	5.22	5.41	5.60	5.79	5.98	6.17	6.36	6.55	6.74	7.12	7.49	7.86	8.23	8.60	8.97	9.71	10.4	11.2	11.9	12.6	14.0
200	8.21	8.58	8.94	9.31	9.67	10.0	10.4	10.7	11.1	11.5	11.8	12.2	12.5	13.2	13.9	14.6	15.3	16.0	16.7	18.1	19.4	20.8	22.1	23.5	26.1
300	11.7	12.3	12.8	13.3	13.8	14.3	14.9	15.4	15.9	16.4	16.9	17.4	17.9	19.0	20.0	21.0	22.0	23.0	23.9	25.9	27.9	29.8	31.7	33.6	37.4
400	15.1	15.8	16.4	17.1	17.8	18.5	19.1	19.8	20.5	21.1	21.8	22.5	23.1	24.4	25.7	27.0	28.3	29.6	30.9	33.4	35.9	38.4	40.9	43.4	48.3
500	18.3	19.1	20.0	20.8	21.6	22.4	23.3	24.1	24.9	25.7	26.5	27.3	28.1	29.7	31.3	32.9	34.5	36.0	37.6	40.7	43.7	46.8	49.8	52.8	58.7
600	21.4	22.4	23.4	24.4	25.3	26.3	27.3	28.2	29.2	30.1	31.1	32.0	33.0	34.8	36.7	38.6	40.4	42.2	44.1	47.7	51.3	54.8	58.4	61.9	68.8
800	27.5	28.7	30.0	31.2	32.5	33.7	35.0	36.2	37.4	38.7	39.9	41.1	42.3	44.7	47.1	49.5	51.9	54.2	56.6	61.2	65.8	70.3	74.8	79.3	88.0
870	29.5	30.9	32.2	33.6	34.9	36.2	37.6	38.9	40.2	41.5	42.9	44.2	45.5	48.1	50.6	53.2	55.7	58.3	60.8	65.8	70.7	75.6	80.4	85.1	94.5
1000	33.2	34.8	36.3	37.8	39.3	40.8	42.3	43.8	45.3	46.8	48.3	49.8	51.2	54.2	57.1	59.9	62.8	65.7	68.5	74.1	79.6	85.0	90.4	95.7	106.2
1160	37.7	39.4	41.1	42.9	44.6	46.3	48.0	49.7	51.4	53.1	54.8	56.5	58.1	61.5	64.7	68.0	71.2	74.5	77.6	84.0	90.2	96.3	102.3	108.3	119.9
1200	38.7	40.6	42.3	44.1	45.9	47.7	49.4	51.2	52.9	54.7	56.4	58.1	59.8	63.2	66.6	70.0	73.3	76.6	79.9	86.4	92.8	99.0	105.2	111.3	123.2
1400	44.1	46.2	48.2	50.2	52.3	54.3	56.3	58.3	60.3	62.2	64.2	66.2	68.1	72.0	75.8	79.6	83.4	87.1	90.8	98.1	105.3	112.3	119.2	126.0	139.2
1600	49.3	51.6	53.9	56.1	58.4	60.7	62.9	65.1	67.3	69.6	71.7	73.9	76.1	80.4	84.7	88.9	93.1	97.2	101.3	109.4	117.2	125.0	132.5	139.8	154.0
1750	53.1	55.5	58.0	60.5	62.9	65.3	67.7	70.1	72.5	74.9	77.2	79.6	81.9	86.5	91.1	95.6	100.1	104.5	108.9	117.4	125.8	134.0	141.9	149.6	164.3
+2000	59.2	61.9	64.7	67.4	70.1	72.8	75.5	78.2	80.8	83.5	86.1	88.7	91.3	96.4	101.4	106.4	111.3	116.1	120.9	130.2	139.3				
+2400	68.5	71.7	74.9	78.0	81.2	84.3	87.3	90.4	93.4	96.5	99.4	102.4	105.3	111.1	116.8	122.4	127.9	133.3	138.6	148.8					
+2800	77.3	80.9	84.4	88.0	91.5	95.0	98.4	101.8	105.2	108.5	111.8	115.1	118.3	124.7	130.9	137.0	142.9	148.7							
+3200	85.5	89.5	93.4	97.3	101.1	104.9	108.6	112.3	116.0	119.6	123.2	126.7	130.1	136.9	143.5										
+3600	93.2	97.5	101.7	105.9	110.0	114.1	118.1	122.0	125.9	129.7	133.5														
+4000	100.4	105.0	109.5	113.9	118.2	122.5	126.7	130.8	134.8																

+ Drives within this speed range may generate an objectionable noise level. This can be reduced by using commercially available acoustical damping material in the belt guard. Contact Gates for recommendations on any drive to be installed in a noise sensitive area.

Note: 31, 33, 35, 37, 39, 42, 46 and 50 groove sprockets are only available as stock products in 40mm width.

Corrected Horsepower Rating = [Base Rating] x [Belt Width Multiplier]

**14M PowerGrip® GT®2 Width Multipliers**

Belt Width (mm)	Width Multiplier
40	1.00
55	1.50
85	2.50
115	3.50
170	5.32





**XL (0.200 Inch Pitch) PowerGrip® Twin Power® Rating Table**

RPM of FASTER Shaft	Base Rated Horsepower for Small Sprocket (Number of Grooves and Pitch Diameter, Inches)												
	10XL 0.637	11XL 0.700	12XL 0.764	14XL 0.891	15XL 0.955	16XL 1.019	18XL 1.146	20XL 1.273	21XL 1.337	22XL 1.401	24XL 1.528	28XL 1.783	30XL 1.910
950	0.034	0.038	0.041	0.048	0.051	0.055	0.062	0.069	0.072	0.075	0.082	0.096	0.10
1160	0.042	0.046	0.050	0.059	0.063	0.067	0.075	0.084	0.088	0.092	0.10	0.12	0.13
1425	0.051	0.057	0.062	0.072	0.077	0.082	0.093	0.10	0.11	0.11	0.12	0.14	0.15
1750	0.063	0.069	0.076	0.088	0.095	0.10	0.11	0.13	0.13	0.14	0.15	0.18	0.19
2850	0.10	0.11	0.12	0.14	0.15	0.16	0.18	0.20	0.21	0.22	0.24	0.28	0.30
3450	0.12	0.14	0.15	0.17	0.19	0.20	0.22	0.25	0.26	0.27	0.29	0.34	0.36
100	0.004	0.004	0.004	0.005	0.005	0.006	0.007	0.007	0.008	0.008	0.009	0.010	0.011
200	0.007	0.008	0.009	0.010	0.011	0.012	0.013	0.014	0.015	0.016	0.017	0.020	0.022
300	0.011	0.012	0.013	0.015	0.016	0.017	0.020	0.022	0.023	0.024	0.026	0.030	0.033
400	0.014	0.016	0.017	0.020	0.022	0.023	0.026	0.029	0.030	0.032	0.035	0.040	0.043
500	0.018	0.020	0.022	0.025	0.027	0.029	0.033	0.036	0.038	0.040	0.043	0.051	0.054
600	0.022	0.024	0.026	0.030	0.033	0.035	0.039	0.043	0.046	0.048	0.052	0.061	0.065
700	0.025	0.028	0.030	0.035	0.038	0.040	0.046	0.051	0.053	0.056	0.061	0.071	0.076
800	0.029	0.032	0.035	0.040	0.043	0.046	0.052	0.058	0.061	0.064	0.069	0.081	0.087
900	0.033	0.036	0.039	0.046	0.049	0.052	0.059	0.065	0.068	0.072	0.078	0.091	0.097
1000	0.036	0.040	0.043	0.051	0.054	0.058	0.065	0.072	0.076	0.079	0.087	0.10	0.11
1100	0.040	0.044	0.048	0.056	0.060	0.064	0.072	0.079	0.083	0.087	0.095	0.11	0.12
1200	0.043	0.048	0.052	0.061	0.065	0.069	0.078	0.087	0.091	0.095	0.10	0.12	0.13
1300	0.047	0.052	0.056	0.066	0.070	0.075	0.084	0.094	0.098	0.10	0.11	0.13	0.14
1400	0.051	0.056	0.061	0.071	0.076	0.081	0.091	0.10	0.11	0.11	0.12	0.14	0.15
1500	0.054	0.060	0.065	0.076	0.081	0.087	0.097	0.11	0.11	0.12	0.13	0.15	0.16
1600	0.058	0.064	0.069	0.081	0.087	0.092	0.10	0.12	0.12	0.13	0.14	0.16	0.17
1700	0.061	0.068	0.074	0.086	0.092	0.098	0.11	0.12	0.13	0.13	0.15	0.17	0.18
1800	0.065	0.071	0.078	0.091	0.097	0.10	0.12	0.13	0.14	0.14	0.16	0.18	0.19
2000	0.072	0.079	0.087	0.10	0.11	0.12	0.13	0.14	0.15	0.16	0.17	0.20	0.21
2200	0.079	0.087	0.095	0.11	0.12	0.13	0.14	0.16	0.17	0.17	0.19	0.22	0.24
2400	0.087	0.095	0.10	0.12	0.13	0.14	0.16	0.17	0.18	0.19	0.21	0.24	0.26
2600	0.094	0.10	0.11	0.13	0.14	0.15	0.17	0.19	0.20	0.20	0.22	0.26	0.28
2800	0.10	0.11	0.12	0.14	0.15	0.16	0.18	0.20	0.21	0.22	0.24	0.28	0.30
3000	0.11	0.12	0.13	0.15	0.16	0.17	0.19	0.21	0.22	0.24	0.26	0.30	0.32
3200	0.12	0.13	0.14	0.16	0.17	0.18	0.21	0.23	0.24	0.25	0.27	0.32	0.34
3400	0.12	0.13	0.15	0.17	0.18	0.19	0.22	0.24	0.25	0.27	0.29	0.33	0.36
3600	0.13	0.14	0.16	0.18	0.19	0.21	0.23	0.26	0.27	0.28	0.31	0.35	0.38
3800	0.14	0.15	0.16	0.19	0.20	0.22	0.24	0.27	0.28	0.30	0.32	0.37	0.40
4000	0.14	0.16	0.17	0.20	0.21	0.23	0.26	0.28	0.30	0.31	0.34	0.39	0.41
4200	0.15	0.17	0.18	0.21	0.22	0.24	0.27	0.30	0.31	0.33	0.35	0.41	0.43
4400	0.16	0.17	0.19	0.22	0.24	0.25	0.28	0.31	0.33	0.34	0.37	0.42	0.45
4600	0.17	0.18	0.20	0.23	0.25	0.26	0.29	0.32	0.34	0.35	0.38	0.44	0.47
4800	0.17	0.19	0.21	0.24	0.26	0.27	0.31	0.34	0.35	0.37	0.40	0.46	0.49
5000	0.18	0.20	0.21	0.25	0.27	0.28	0.32	0.35	0.37	0.38	0.41	0.48	0.50
5500					0.29	0.31	0.35	0.38	0.40	0.42	0.45	0.52	0.55
6000					0.32	0.34	0.38	0.41	0.43	0.45	0.49	0.55	0.58
6500					0.34	0.36	0.40	0.45	0.46	0.48	0.52	0.59	0.62
7000					0.37	0.39	0.43	0.48	0.50	0.52	0.55	0.62	0.65
7500					0.39	0.41	0.46	0.50	0.53	0.55	0.58	0.65	0.68
8000						0.49	0.53	0.55	0.57	0.57	0.61	0.68	0.71
8500						0.51	0.56	0.58	0.60	0.64	0.64	0.71	0.73
9000						0.54	0.58	0.61	0.63	0.67	0.67	0.73	0.75
9500						0.56	0.61	0.63	0.65	0.69	0.69	0.75	0.77
10000						0.58	0.63	0.65	0.68	0.71	0.71	0.76	0.78

Use this sprocket and rpm only if required to obtain speed ratio or to meet diameter limitations. See Engineering Section II-5, Sprocket Diameter — Speed, on page 178.

Corrected Horsepower Rating = [Base Rating] x [Belt Width Multiplier]

**XL PowerGrip® Width Multipliers**

Belt Width (inches)	Width Multiplier
0.250	1.00
0.375	1.59





**L (0.375 Inch Pitch) PowerGrip® Twin Power® Rating Table**

RPM of FASTER Shaft	Base Rated Horsepower for Small Sprocket (Number of Grooves and Pitch Diameter, Inches)																	
	10L	12L	14L	16L	18L	19L	20L	21L	22L	24L	26L	28L	30L	32L	36L	40L	44L	48L
725	0.17	0.20	0.24	0.27	0.31	0.32	0.34	0.36	0.37	0.41	0.44	0.47	0.51	0.54	0.61	0.67	0.74	0.81
870	0.20	0.24	0.28	0.33	0.37	0.39	0.41	0.43	0.45	0.49	0.53	0.57	0.61	0.65	0.73	0.81	0.88	0.96
950	0.22	0.27	0.31	0.36	0.40	0.42	0.44	0.47	0.49	0.53	0.57	0.62	0.66	0.71	0.79	0.88	0.96	1.05
1160	0.27	0.33	0.38	0.43	0.49	0.51	0.54	0.57	0.59	0.65	0.70	0.75	0.81	0.86	0.96	1.06	1.16	1.26
1425	0.33	0.40	0.47	0.53	0.60	0.63	0.66	0.69	0.73	0.79	0.86	0.92	0.98	1.05	1.17	1.29	1.41	1.53
1750	0.41	0.49	0.57	0.65	0.73	0.77	0.81	0.85	0.89	0.97	1.04	1.12	1.20	1.27	1.42	1.56	1.70	1.83
2850		0.79	0.92	1.05	1.17	1.23	1.29	1.35	1.41	1.53	1.64	1.75	1.86	1.96	2.15	2.33	2.48	2.61
3450			1.11	1.25	1.40	1.47	1.54	1.61	1.68	1.81	1.93	2.05	2.17	2.28	2.47	2.63	2.75	2.83
100	0.023	0.028	0.033	0.037	0.042	0.044	0.047	0.049	0.052	0.056	0.061	0.066	0.070	0.075	0.084	0.094	0.10	0.11
200	0.047	0.056	0.066	0.075	0.084	0.089	0.094	0.098	0.10	0.11	0.12	0.13	0.14	0.15	0.17	0.19	0.21	0.22
300	0.070	0.084	0.098	0.11	0.13	0.13	0.14	0.15	0.15	0.17	0.18	0.20	0.21	0.22	0.25	0.28	0.31	0.34
400	0.094	0.11	0.13	0.15	0.17	0.18	0.19	0.20	0.21	0.22	0.24	0.26	0.28	0.30	0.34	0.37	0.41	0.45
500	0.12	0.14	0.16	0.19	0.21	0.22	0.23	0.25	0.26	0.28	0.30	0.33	0.35	0.37	0.42	0.47	0.51	0.56
600	0.14	0.17	0.20	0.22	0.25	0.27	0.28	0.29	0.31	0.34	0.36	0.39	0.42	0.45	0.50	0.56	0.61	0.67
700	0.16	0.20	0.23	0.26	0.29	0.31	0.33	0.34	0.36	0.39	0.42	0.46	0.49	0.52	0.59	0.65	0.71	0.78
800	0.19	0.22	0.26	0.30	0.34	0.36	0.37	0.39	0.41	0.45	0.49	0.52	0.56	0.60	0.67	0.74	0.81	0.89
900	0.21	0.25	0.29	0.34	0.38	0.40	0.42	0.44	0.46	0.50	0.55	0.59	0.63	0.67	0.75	0.83	0.91	0.99
1000	0.23	0.28	0.33	0.37	0.42	0.44	0.47	0.49	0.51	0.56	0.60	0.65	0.70	0.74	0.83	0.92	1.01	1.10
1100	0.26	0.31	0.36	0.41	0.46	0.49	0.51	0.54	0.56	0.61	0.66	0.71	0.76	0.81	0.91	1.01	1.11	1.20
1200	0.28	0.34	0.39	0.45	0.50	0.53	0.56	0.59	0.61	0.67	0.72	0.78	0.83	0.89	0.99	1.10	1.20	1.30
1300	0.30	0.36	0.42	0.49	0.55	0.57	0.60	0.63	0.66	0.72	0.78	0.84	0.90	0.96	1.07	1.19	1.30	1.41
1400	0.33	0.39	0.46	0.52	0.59	0.62	0.65	0.68	0.71	0.78	0.84	0.90	0.97	1.03	1.15	1.27	1.39	1.50
1500	0.35	0.42	0.49	0.56	0.63	0.66	0.70	0.73	0.76	0.83	0.90	0.97	1.03	1.10	1.23	1.36	1.48	1.60
1600	0.37	0.45	0.52	0.60	0.67	0.71	0.74	0.78	0.81	0.89	0.96	1.03	1.10	1.17	1.30	1.44	1.57	1.69
1700	0.40	0.48	0.55	0.63	0.71	0.75	0.79	0.83	0.86	0.94	1.02	1.09	1.16	1.24	1.38	1.52	1.66	1.79
1800		0.50	0.59	0.67	0.75	0.79	0.83	0.87	0.91	0.99	1.07	1.15	1.23	1.30	1.45	1.60	1.74	1.87
1900		0.53	0.62	0.71	0.79	0.83	0.88	0.92	0.96	1.05	1.13	1.21	1.29	1.37	1.53	1.68	1.82	1.96
2000		0.56	0.65	0.74	0.83	0.88	0.92	0.97	1.01	1.10	1.19	1.27	1.36	1.44	1.60	1.76	1.90	2.04
2200		0.61	0.71	0.81	0.91	0.96	1.01	1.06	1.11	1.20	1.30	1.39	1.48	1.57	1.74	1.90	2.06	2.20
2400		0.67	0.78	0.89	0.99	1.05	1.10	1.15	1.20	1.30	1.41	1.50	1.60	1.69	1.87	2.04	2.20	2.35
2600		0.72	0.84	0.96	1.07	1.13	1.19	1.24	1.30	1.41	1.51	1.62	1.72	1.82	2.00	2.18	2.33	2.47
2800		0.78	0.90	1.03	1.15	1.21	1.27	1.33	1.39	1.50	1.62	1.73	1.83	1.93	2.12	2.30	2.45	2.59
3000		0.83	0.97	1.10	1.23	1.29	1.36	1.42	1.48	1.60	1.72	1.83	1.94	2.04	2.24	2.41	2.56	2.68
3200			1.03	1.17	1.30	1.37	1.44	1.50	1.57	1.69	1.82	1.93	2.04	2.15	2.35	2.51	2.65	2.76
3400			1.09	1.24	1.38	1.45	1.52	1.59	1.66	1.79	1.91	2.03	2.14	2.25	2.44	2.61	2.73	2.82
3600			1.15	1.30	1.45	1.53	1.60	1.67	1.74	1.87	2.00	2.12	2.24	2.35	2.53	2.68	2.79	2.86
3800			1.21	1.37	1.53	1.60	1.68	1.75	1.82	1.96	2.09	2.21	2.33	2.43	2.61	2.75	2.84	2.87
4000			1.27	1.44	1.60	1.68	1.76	1.83	1.90	2.04	2.18	2.30	2.41	2.51	2.68	2.80	2.87	2.87
4200				1.50	1.67	1.75	1.83	1.91	1.98	2.12	2.26	2.38	2.49	2.59	2.74	2.84	2.87	2.83
4400				1.57	1.74	1.82	1.90	1.98	2.06	2.20	2.33	2.45	2.56	2.65	2.79	2.87	2.86	2.78
4600				1.63	1.81	1.89	1.98	2.05	2.13	2.28	2.41	2.52	2.63	2.71	2.83	2.87	2.83	2.69
4800				1.69	1.87	1.96	2.04	2.12	2.20	2.35	2.47	2.59	2.68	2.76	2.86	2.87	2.78	2.58
5000				1.76	1.94	2.03	2.11	2.19	2.27	2.41	2.54	2.65	2.74	2.80	2.87	2.84	2.70	2.44
5200				1.82	2.00	2.09	2.18	2.26	2.33	2.47	2.60	2.70	2.78	2.84	2.87	2.80	2.60	2.26
5400				1.87	2.06	2.15	2.24	2.32	2.40	2.53	2.65	2.74	2.81	2.86	2.86	2.74	2.47	2.06
5600				1.93	2.12	2.21	2.30	2.38	2.45	2.59	2.70	2.78	2.84	2.87	2.83	2.66	2.32	1.82
5800				1.99	2.18	2.27	2.36	2.44	2.51	2.64	2.74	2.82	2.86	2.87	2.79	2.56	2.15	1.55
6000				2.04	2.24	2.33	2.41	2.49	2.56	2.68	2.78	2.84	2.87	2.87	2.74	2.44	1.94	1.24

Use this sprocket and rpm only if required to obtain speed ratio or to meet diameter limitations. See Engineering Section II-5, Sprocket Diameter — Speed, on page 178.  
Sprocket surface speeds over 6,500 fpm; special pulleys are required. See Engineering Section II-5, Sprocket Diameter — Speed, on page 178.

Corrected Horsepower Rating = [Base Rating] x [Belt Width Multiplier]

**L PowerGrip® Width Multipliers**

Belt Width (inches)	Width Multiplier
0.500	1.00
0.750	1.59
1.000	2.20





**H (0.500 Inch Pitch) PowerGrip® Twin Power® Rating Table**

RPM of Faster Shaft	Base Rated Horsepower for Small Sprocket (Number of Grooves and Pitch Diameter, Inches)															
	14H 2.228	16H 2.546	18H 2.865	19H 3.024	20H 3.183	21H 3.342	22H 3.501	24H 3.820	26H 4.138	28H 4.456	30H 4.775	32H 5.093	36H 5.730	40H 6.366	44H 7.003	48H 7.639
725	1.26	1.44	1.62	1.71	1.80	1.89	1.98	2.16	2.34	2.52	2.70	2.88	3.23	3.59	3.94	4.29
870	1.52	1.73	1.95	2.06	2.16	2.27	2.38	2.59	2.81	3.02	3.23	3.44	3.87	4.29	4.71	5.12
950	1.66	1.89	2.13	2.24	2.36	2.48	2.59	2.83	3.06	3.29	3.53	3.76	4.22	4.67	5.12	5.57
1160	2.02	2.31	2.59	2.73	2.88	3.02	3.16	3.44	3.73	4.01	4.29	4.57	5.12	5.67	6.20	6.74
1425		2.83	3.18	3.35	3.53	3.70	3.87	4.22	4.56	4.90	5.24	5.57	6.23	6.88	7.52	8.15
1750		3.46	3.89	4.10	4.31	4.52	4.73	5.15	5.56	5.97	6.37	6.77	7.56	8.32	9.05	9.76
2850			6.23	6.56	6.88	7.21	7.52	8.15	8.75	9.34	9.91	10.5	11.5	12.4	13.3	14.0
3450			7.46	7.84	8.21	8.58	8.94	9.64	10.3	11.0	11.6	12.2	13.2	14.1	14.7	15.2
100	0.17	0.20	0.22	0.24	0.25	0.26	0.27	0.30	0.32	0.35	0.37	0.40	0.45	0.50	0.55	0.60
200	0.35	0.40	0.45	0.47	0.50	0.52	0.55	0.60	0.65	0.70	0.75	0.80	0.90	1.00	1.10	1.20
300	0.52	0.60	0.67	0.71	0.75	0.79	0.82	0.90	0.97	1.05	1.12	1.20	1.34	1.49	1.64	1.79
400	0.70	0.80	0.90	0.95	1.00	1.05	1.10	1.20	1.30	1.39	1.49	1.59	1.79	1.99	2.19	2.39
500	0.87	1.00	1.12	1.18	1.25	1.31	1.37	1.49	1.62	1.74	1.87	1.99	2.24	2.48	2.73	2.98
600	1.05	1.20	1.34	1.42	1.49	1.57	1.64	1.79	1.94	2.09	2.24	2.39	2.68	2.98	3.27	3.56
700	1.22	1.39	1.57	1.66	1.74	1.83	1.92	2.09	2.26	2.43	2.61	2.78	3.12	3.46	3.80	4.14
800	1.39	1.59	1.79	1.89	1.99	2.09	2.19	2.39	2.58	2.78	2.98	3.17	3.56	3.95	4.34	4.72
900	1.57	1.79	2.01	2.13	2.24	2.35	2.46	2.68	2.90	3.12	3.34	3.56	4.00	4.43	4.86	5.29
1000	1.74	1.99	2.24	2.36	2.48	2.61	2.73	2.98	3.22	3.46	3.71	3.95	4.43	4.91	5.38	5.85
1100	1.92	2.19	2.46	2.59	2.73	2.87	3.00	3.27	3.54	3.80	4.07	4.34	4.86	5.38	5.90	6.41
1200		2.39	2.68	2.83	2.98	3.12	3.27	3.56	3.85	4.14	4.43	4.72	5.29	5.85	6.41	6.95
1300		2.58	2.90	3.06	3.22	3.38	3.54	3.85	4.17	4.48	4.79	5.10	5.71	6.31	6.91	7.49
1400		2.78	3.12	3.29	3.46	3.63	3.80	4.14	4.48	4.82	5.15	5.48	6.13	6.77	7.40	8.02
1500		2.98	3.34	3.53	3.71	3.89	4.07	4.43	4.79	5.15	5.50	5.85	6.54	7.22	7.88	8.53
1600		3.17	3.56	3.76	3.95	4.14	4.34	4.72	5.10	5.48	5.85	6.22	6.95	7.67	8.36	9.03
1700		3.37	3.78	3.99	4.19	4.40	4.60	5.01	5.41	5.81	6.20	6.59	7.36	8.10	8.83	9.52
1800		3.56	4.00	4.22	4.43	4.65	4.86	5.29	5.71	6.13	6.54	6.95	7.75	8.53	9.28	10.0
1900		3.76	4.22	4.44	4.67	4.90	5.12	5.57	6.01	6.45	6.88	7.31	8.15	8.95	9.72	10.5
2000		3.95	4.43	4.67	4.91	5.15	5.38	5.85	6.31	6.77	7.22	7.67	8.53	9.36	10.2	10.9
2100			4.65	4.90	5.15	5.40	5.64	6.13	6.61	7.09	7.56	8.02	8.91	9.76	10.6	11.3
2200			4.86	5.12	5.38	5.64	5.90	6.41	6.91	7.40	7.88	8.36	9.28	10.2	11.0	11.8
2300			5.08	5.35	5.62	5.89	6.15	6.68	7.20	7.71	8.21	8.70	9.64	10.5	11.4	12.2
2400			5.29	5.57	5.85	6.13	6.41	6.95	7.49	8.02	8.53	9.03	10.0	10.9	11.8	12.5
2500			5.50	5.79	6.08	6.37	6.66	7.22	7.78	8.32	8.85	9.36	10.3	11.3	12.1	12.9
2600			5.71	6.01	6.31	6.61	6.91	7.49	8.06	8.62	9.16	9.68	10.7	11.6	12.5	13.2
2800			6.13	6.45	6.77	7.09	7.40	8.02	8.62	9.20	9.76	10.3	11.3	12.3	13.1	13.9
3000			6.54	6.88	7.22	7.56	7.88	8.53	9.16	9.76	10.3	10.9	12.0	12.9	13.7	14.4
3200			6.95	7.31	7.67	8.02	8.36	9.03	9.68	10.3	10.9	11.5	12.5	13.5	14.2	14.8
3400			7.36	7.73	8.10	8.47	8.83	9.52	10.2	10.8	11.4	12.0	13.1	14.0	14.7	15.2
3600					8.53	8.91	9.28	10.0	10.7	11.3	12.0	12.5	13.6	14.4	15.0	15.4
3800					8.95	9.34	9.72	10.5	11.2	11.8	12.4	13.0	14.0	14.8	15.3	15.5
4000					9.36	9.76	10.2	10.9	11.6	12.3	12.9	13.5	14.4	15.1	15.4	15.5
4200					9.76	10.2	10.6	11.3	12.1	12.7	13.3	13.9	14.7	15.3	15.5	15.4
4400					10.2	10.6	11.0	11.8	12.5	13.1	13.7	14.2	15.0	15.4	15.5	15.1
4600					10.5	11.0	11.4	12.2	12.9	13.5	14.1	14.5	15.2	15.5	15.3	14.7
4800					10.9	11.3	11.8	12.5	13.2	13.9	14.4	14.8	15.4	15.5	15.1	14.1
5000					11.3	11.7	12.1	12.9	13.6	14.2	14.7	15.1	15.5	15.4	14.7	13.4
5200					11.6	12.1	12.5	13.2	13.9	14.5	14.9	15.2	15.5	15.2	14.2	
5400					12.0	12.4	12.8	13.6	14.2	14.7	15.1	15.4	15.5	14.9	13.6	
5600					12.3	12.7	13.1	13.9	14.5	14.9	15.3	15.5	15.4	14.5		
5800					12.6	13.0	13.4	14.1	14.7	15.1	15.4	15.5	15.2	14.0		
6000					12.9	13.3	13.7	14.4	14.9	15.3	15.5	15.5	14.9	13.4		

□ Use this sprocket and rpm only if required to obtain speed ratio or to meet diameter limitations. See Engineering Section II-5, Sprocket Diameter — Speed, on page 178.  
 □ Sprocket surface speeds over 6,500 fpm; special pulleys are required. See Engineering Section II-5, Sprocket Diameter — Speed, on page 178.

Corrected Horsepower Rating = [Base Rating] x [Belt Width Multiplier]

**H PowerGrip® Width Multipliers**

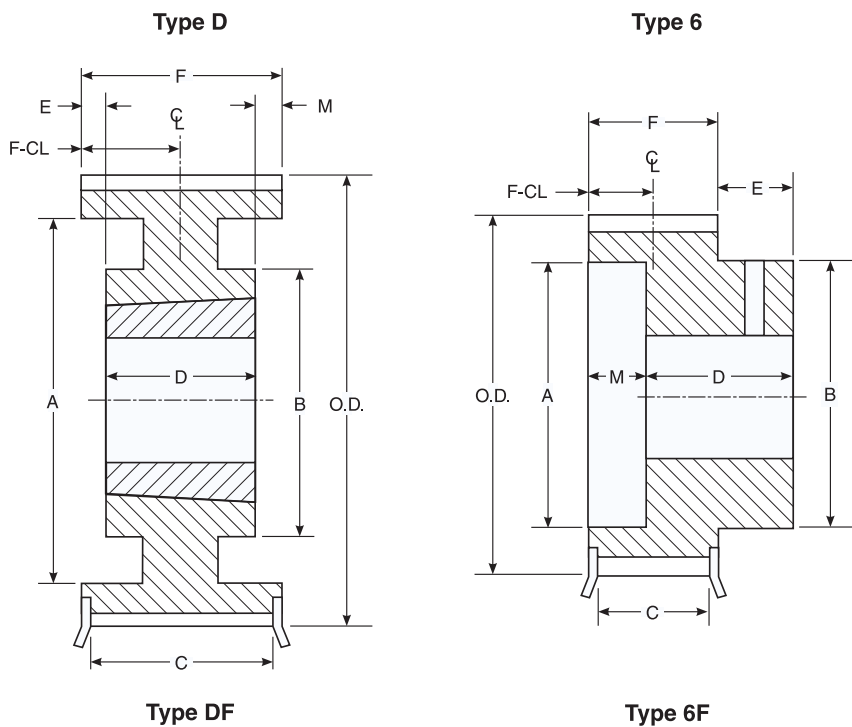
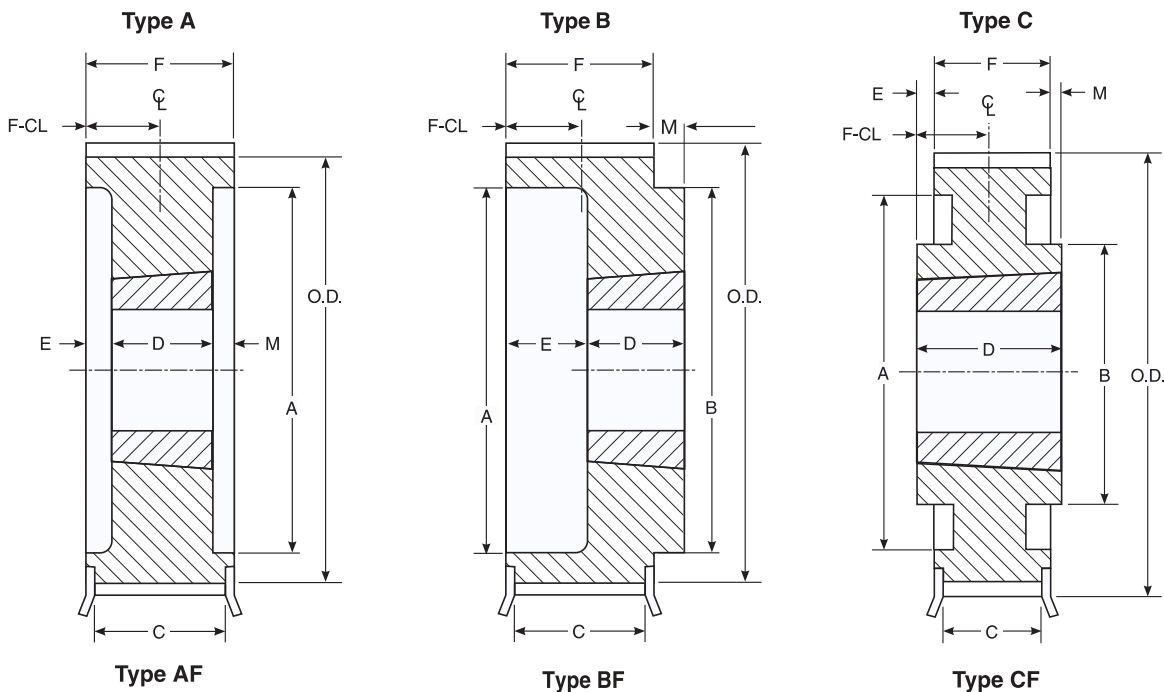
Belt Width (inches)	Width Multiplier
0.750	1.00
1.000	1.38
1.500	2.20
2.000	3.05
3.000	4.84





**Gates PowerGrip® GT®2 Sprocket Specifications**

**For 5mm, 8mm, and 14mm PowerGrip® GT®3 Belts**





# 5mm Pitch PowerGrip® GT<sup>2</sup> Aluminum Sprocket Specifications

Sprocket Number	Number of Teeth	Diameters (in)			Design Type	Dimensions (in)										Bushing Size	Bore Sizes		Approx. Wt. (lb) *	Approx. VR <sup>2</sup> **	Mati. Spec. ***	Screw Size ****
		Pitch	O.D.	Flange Ref.		A	B	C	D	E	F	M	F-CL	Min.	Max.		Approx. (lb)					
P12-5MGT-09AL	12	0.752	0.707	0.875	6F	---	0.44	0.42	0.80	0.25	0.55	0	0.27	MPB	0.250	0.250	0.02	0.000010	AL	8-32		
P13-5MGT-09AL	13	0.815	0.770	0.938	6F	---	0.50	0.42	0.80	0.25	0.55	0	0.27	MPB	0.250	0.250	0.02	0.000014	AL	8-32		
P14-5MGT-09AL	14	0.877	0.832	1.000	6F	---	0.50	0.42	0.80	0.25	0.55	0	0.27	MPB	0.250	0.250	0.03	0.000019	AL	8-32		
P15-5MGT-09AL	15	0.940	0.895	1.063	6F	---	0.56	0.42	0.80	0.25	0.55	0	0.27	MPB	0.250	0.250	0.03	0.000025	AL	8-32		
P16-5MGT-09AL	16	1.003	0.958	1.094	6F	---	0.56	0.42	0.80	0.25	0.55	0	0.27	MPB	0.250	0.313	0.04	0.000033	AL	8-32		
P17-5MGT-09AL	17	1.065	1.020	1.188	6F	---	0.63	0.42	0.80	0.25	0.55	0	0.27	MPB	0.250	0.313	0.04	0.000043	AL	8-32		
P18-5MGT-09AL	18	1.128	1.083	1.250	6F	---	0.69	0.42	0.80	0.25	0.55	0	0.27	MPB	0.250	0.375	0.05	0.000055	AL	8-32		
P19-5MGT-09AL	19	1.191	1.146	1.313	6F	---	0.75	0.42	0.80	0.25	0.55	0	0.27	MPB	0.250	0.437	0.06	0.000069	AL	8-32		
P20-5MGT-09AL	20	1.253	1.208	1.375	6F	---	0.81	0.42	0.80	0.25	0.55	0	0.27	MPB	0.250	0.500	0.06	0.000087	AL	8-32		
P22-5MGT-09AL	22	1.379	1.334	1.500	6F	---	0.94	0.42	0.80	0.25	0.55	0	0.27	MPB	0.250	0.625	0.08	0.000131	AL	8-32		
P24-5MGT-09AL	24	1.504	1.459	1.625	6F	---	1.00	0.42	0.86	0.31	0.55	0	0.27	MPB	0.250	0.687	0.10	0.000190	AL	8-32		
P25-5MGT-09AL	25	1.566	1.521	1.688	6F	---	1.00	0.42	0.86	0.31	0.55	0	0.27	MPB	0.250	0.687	0.11	0.000221	AL	8-32		
P26-5MGT-09AL	26	1.629	1.584	1.750	6F	---	1.06	0.42	0.86	0.31	0.55	0	0.27	MPB	0.250	0.750	0.12	0.000261	AL	8-32		
P28-5MGT-09AL	28	1.754	1.709	1.875	6F	---	1.19	0.42	0.86	0.31	0.55	0	0.27	MPB	0.250	0.875	0.14	0.000360	AL	8-32		
P30-5MGT-09AL	30	1.880	1.835	2.000	6F	---	1.19	0.42	0.86	0.31	0.55	0	0.27	MPB	0.250	0.875	0.16	0.000464	AL	8-32		
P32-5MGT-09AL	32	2.005	1.960	2.125	6F	---	1.25	0.42	0.86	0.31	0.55	0	0.27	MPB	0.250	0.937	0.18	0.000601	AL	8-32		
P34-5MGT-09AL	34	2.130	2.085	2.250	6F	---	1.38	0.42	0.86	0.31	0.55	0	0.27	MPB	0.250	1.062	0.21	0.000780	AL	8-32		
P36-5MGT-09AL	36	2.256	2.211	---	6	---	1.50	---	0.94	0.39	0.55	0	0.27	MPB	0.313	1.062	0.25	0.001023	AL	8-32		
P38-5MGT-09AL	38	2.381	2.336	---	6	---	1.50	---	0.94	0.39	0.55	0	0.27	MPB	0.313	1.187	0.28	0.001243	AL	8-32		
P40-5MGT-09AL	40	2.506	2.461	---	6	---	1.50	---	0.94	0.39	0.55	0	0.27	MPB	0.313	1.187	0.30	0.001500	AL	8-32		
P44-5MGT-09AL	44	2.757	2.712	---	6	---	1.50	---	0.94	0.39	0.55	0	0.27	MPB	0.313	1.187	0.35	0.002148	AL	8-32		
P48-5MGT-09AL	48	3.008	2.963	---	6	---	1.50	---	0.94	0.39	0.55	0	0.27	MPB	0.375	1.187	0.40	0.003001	AL	10-32		
P50-5MGT-09AL	50	3.133	3.088	---	6	---	1.50	---	0.94	0.39	0.55	0	0.27	MPB	0.375	1.187	0.43	0.003518	AL	10-32		
P56-5MGT-09AL	56	3.509	3.464	---	6	---	1.50	---	0.94	0.39	0.55	0	0.27	MPB	0.375	1.187	0.54	0.005492	AL	10-32		
P60-5MGT-09AL	60	3.760	3.715	---	6	---	1.50	---	0.94	0.39	0.55	0	0.27	MPB	0.375	1.187	0.62	0.007220	AL	10-32		
P62-5MGT-09AL	62	3.885	3.840	---	6	---	1.50	---	0.94	0.39	0.55	0	0.27	MPB	0.375	1.187	0.64	0.008225	AL	10-32		
P70-5MGT-09AL	70	4.386	4.341	---	6	---	1.50	---	0.94	0.39	0.55	0	0.27	MPB	0.375	1.187	0.80	0.013352	AL	10-32		
P72-5MGT-09AL	72	4.511	4.466	---	6	---	1.50	---	0.94	0.39	0.55	0	0.27	MPB	0.375	1.187	0.84	0.014946	AL	10-32		

**CAUTION: AL sprockets have limited wear resistance with 5MGT belts, and insufficient wear resistance and load capacity for 5M Poly Chain GT Carbon belts. Consider using for prototyping purposes.**

Notes: \* Weights for Minimum Plain Bore (MPB) Sprockets are with minimum bore.

\*\* WR<sup>2</sup> values have lb-ft<sup>2</sup> units.

\*\*\* Aluminum sprockets have clear anodize finish.

\*\*\*\* 12 & 13 groove pulleys are supplied with one set screw. All other sizes are supplied with two set screws at 90 degrees.

Material Spec: S - Steel SS - Sintered Steel G - Grey Iron D - Ductile Iron

Design Type Suffix: 1 - Solid 2 - Web 3 - Arms

Details shown which do not affect drive function may be changed without notification.







# 5mm Pitch PowerGrip® GT<sup>2</sup> Sprocket Specifications

Sprocket Number	Number of Teeth	Diameters (in)			Design Type	Dimensions (in)										F-CL	M	F	Bore Sizes		Approx. Wt. (lb)	Approx. WR <sup>2</sup>	Mati. Spec.
		Pitch	O.D.	Flange Ref.		A	B	C	D	E	F	M	Bushing Size	Min.	Max.								
P18-5MGT-15-MPB	18	1.128	1.083	1.375	6F	—	0.68	0.71	1.25	0.36	0.89	0	0.45	MPB	0.250	0.375	0.24	0.0002	ST				
P19-5MGT-15-MPB	19	1.191	1.146	1.438	6F	—	0.88	0.71	1.25	0.36	0.89	0	0.45	MPB	0.250	0.437	0.28	0.0003	ST				
P20-5MGT-15-MPB	20	1.253	1.208	1.531	6F	—	0.90	0.71	1.25	0.36	0.89	0	0.45	MPB	0.250	0.500	0.32	0.0004	ST				
P21-5MGT-15-MPB	21	1.316	1.271	1.531	6F	—	0.90	0.71	1.25	0.36	0.89	0	0.45	MPB	0.250	0.500	0.36	0.0005	ST				
P22-5MGT-15-MPB	22	1.379	1.334	1.656	6F	—	0.94	0.71	1.28	0.39	0.89	0	0.45	MPB	0.250	0.500	0.40	0.0006	ST				
P23-5MGT-15-MPB	23	1.441	1.396	1.656	6F	—	1.15	0.71	1.28	0.39	0.89	0	0.45	MPB	0.375	0.625	0.44	0.0007	ST				
P24-5MGT-15-MPB	24	1.504	1.459	1.781	6F	—	1.18	0.71	1.28	0.39	0.89	0	0.45	MPB	0.375	0.625	0.47	0.0009	ST				
P25-5MGT-15-MPB	25	1.566	1.521	1.781	6F	—	1.18	0.71	1.28	0.39	0.89	0	0.45	MPB	0.375	0.625	0.55	0.0011	ST				
P26-5MGT-15-MPB	26	1.629	1.584	1.906	6F	—	1.21	0.71	1.28	0.39	0.89	0	0.45	MPB	0.375	0.687	0.60	0.0013	ST				
P28-5MGT-15-MPB	28	1.754	1.709	2.031	6F	—	1.37	0.71	1.34	0.45	0.89	0	0.45	MPB	0.500	0.750	0.67	0.0017	ST				
P30-5MGT-15-MPB	30	1.880	1.835	2.125	6F	—	1.44	0.71	1.34	0.45	0.89	0	0.45	MPB	0.500	0.937	0.75	0.0022	ST				
P32-5MGT-15-MPB	32	2.005	1.960	2.125	6F	—	1.44	0.71	1.34	0.45	0.89	0	0.45	MPB	0.500	0.937	0.88	0.0029	ST				
P34-5MGT-15-MPB	34	2.130	2.085	2.375	6F	—	1.69	0.71	1.34	0.45	0.89	0	0.45	MPB	0.500	1.000	0.95	0.0036	ST				
P36-5MGT-15-MPB	36	2.256	2.211	2.375	6F	—	1.69	0.71	1.34	0.45	0.89	0	0.45	MPB	0.500	1.125	1.12	0.0047	ST				
P36-5MGT-15	36	2.256	2.211	2.375	AF	—	—	0.71	0.88	0	0.88	0	0.44	1108	0.500	1.000	0.50	0.0021	ST				
P38-5MGT-15-MPB	38	2.381	2.336	2.625	6F	—	1.96	0.71	1.34	0.45	0.89	0	0.45	MPB	0.500	1.250	1.35	0.0064	ST				
P38-5MGT-15	38	2.381	2.336	2.625	AF	—	—	0.71	0.88	0	0.89	0	0.45	1108	0.500	1.000	0.61	0.0029	ST				
P40-5MGT-15-MPB	40	2.506	2.461	2.750	6F	—	2.09	0.71	1.38	0.49	0.89	0	0.45	MPB	0.500	1.312	1.50	0.0079	ST				
P40-5MGT-15	40	2.506	2.461	2.750	AF	—	—	0.71	0.88	0	0.89	0	0.45	1108	0.500	1.000	0.72	0.0038	ST				
P44-5MGT-15	44	2.757	2.712	3.094	AF	—	—	0.71	0.88	0	0.89	0	0.45	1108	0.500	1.000	0.95	0.0061	ST				
P45-5MGT-15-MPB	45	2.820	2.775	3.094	6F	—	2.34	0.71	1.38	0.49	0.89	0	0.45	MPB	0.500	1.500	2.00	0.0134	ST				
P48-5MGT-15	48	3.008	2.963	3.330	BF	—	2.50	0.71	1.00	0	0.89	0.13	0.45	1210	0.500	1.250	0.97	0.0074	DI				
P50-5MGT-15-MPB	50	3.133	3.088	3.330	6F	—	2.50	0.71	1.38	0.49	0.89	0	0.45	MPB	0.500	1.750	2.30	0.0190	DI				
P52-5MGT-15	52	3.258	3.213	3.566	BF	—	2.81	0.71	1.00	0	0.89	0.13	0.45	1210	0.500	1.250	1.17	0.0105	DI				
P56-5MGT-15	56	3.509	3.464	3.800	BF	—	2.88	0.71	1.00	0	0.89	0.13	0.45	1610	0.500	1.688	1.37	0.0143	DI				
P60-5MGT-15	60	3.760	3.715	4.044	BF	—	3.12	0.71	1.00	0	0.89	0.13	0.45	1610	0.500	1.688	1.68	0.0201	DI				
P64-5MGT-15	64	4.010	3.965	4.170	BF	—	3.25	0.71	1.00	0	0.89	0.13	0.45	1610	0.500	1.688	2.00	0.0273	DI				
P68-5MGT-15	68	4.261	4.216	4.520	BF	—	3.25	0.71	1.00	0	0.89	0.13	0.45	1610	0.500	1.688	2.40	0.0370	DI				
P72-5MGT-15	72	4.511	4.466	4.670	BF	—	3.25	0.71	1.00	0	0.89	0.13	0.45	1610	0.500	1.688	2.70	0.0468	DI				
P80-5MGT-15	80	5.013	4.968	—	B	—	3.25	—	1.00	0	0.89	0.11	0.45	1610	0.500	1.688	3.60	0.0771	DI				
P90-5MGT-15	90	5.639	5.594	—	B	—	3.25	—	1.00	0	0.89	0.11	0.45	1610	0.500	1.688	5.00	0.1358	DI				
P112-5MGT-15	112	7.018	6.973	—	B	—	4.38	—	1.25	0	0.89	0.36	0.45	2012	0.500	2.125	8.30	0.3503	DI				

Material Spec: S - Steel SS - Sintered Steel G - Grey Iron D - Ductile Iron  
Design Type Suffix: 1 - Solid 2 - Web 3 - Arms

NOTES: • Weights for Minimum Plain Bore (MPB) Sprockets are with minimum bore • Weights and WR<sup>2</sup> for Bushed Sprockets do not include bushings. • WR<sup>2</sup> values have lb-ft<sup>2</sup> units.

Details shown which do not affect drive function may be changed without notification.





## 5mm Pitch PowerGrip® GT<sup>2</sup> Sprocket Specifications

Sprocket Number	Number of Teeth	Diameters (in)			Design Type	Dimensions (in)										Bore Sizes		Approx. Wt. (lb)	Approx. WR <sup>2</sup>	Mati. Spec.
		Pitch	O.D.	Flange Ref.		A	B	C	D	E	F	M	F-CL	Bushing Size	Min.	Max.				
															Min.	Max.				
P18-5MGT-25-MPB	18	1.128	1.083	1.375	6F	---	0.68	1.1	1.65	0.37	1.28	0	0.64	MPB	0.250	0.375	0.24	0.0002	ST	
P19-5MGT-25-MPB	19	1.191	1.146	1.438	6F	---	0.88	1.1	1.65	0.37	1.28	0	0.64	MPB	0.250	0.437	0.28	0.0003	ST	
P20-5MGT-25-MPB	20	1.253	1.208	1.531	6F	---	0.90	1.1	1.65	0.37	1.28	0	0.64	MPB	0.250	0.500	0.32	0.0004	ST	
P21-5MGT-25-MPB	21	1.316	1.271	1.531	6F	---	0.90	1.1	1.65	0.37	1.28	0	0.64	MPB	0.250	0.500	0.36	0.0005	ST	
P22-5MGT-25-MPB	22	1.379	1.334	1.656	6F	---	0.94	1.1	1.68	0.40	1.28	0	0.64	MPB	0.250	0.500	0.40	0.0006	ST	
P23-5MGT-25-MPB	23	1.441	1.396	1.656	6F	---	1.15	1.1	1.68	0.40	1.28	0	0.64	MPB	0.375	0.625	0.44	0.0007	ST	
P24-5MGT-25-MPB	24	1.504	1.459	1.781	6F	---	1.18	1.1	1.68	0.40	1.28	0	0.64	MPB	0.375	0.625	0.47	0.0009	ST	
P25-5MGT-25-MPB	25	1.566	1.521	1.781	6F	---	1.18	1.1	1.68	0.40	1.28	0	0.64	MPB	0.375	0.625	0.55	0.0011	ST	
P26-5MGT-25-MPB	26	1.629	1.584	1.906	6F	---	1.21	1.1	1.68	0.40	1.28	0	0.64	MPB	0.375	0.687	0.60	0.0013	ST	
P28-5MGT-25-MPB	28	1.754	1.709	2.031	6F	---	1.37	1.1	1.73	0.45	1.28	0	0.64	MPB	0.500	0.750	0.67	0.0017	ST	
P30-5MGT-25-MPB	30	1.880	1.835	2.125	6F	---	1.44	1.1	1.73	0.45	1.28	0	0.64	MPB	0.500	0.937	0.75	0.0022	ST	
P32-5MGT-25-MPB	32	2.005	1.960	2.125	6F	---	1.44	1.1	1.73	0.45	1.28	0	0.64	MPB	0.500	0.937	0.88	0.0029	ST	
P34-5MGT-25-MPB	34	2.130	2.085	2.375	6F	---	1.69	1.1	1.73	0.45	1.28	0	0.64	MPB	0.500	1.000	0.95	0.0036	ST	
P36-5MGT-25-MPB	36	2.256	2.211	2.375	6F	---	1.69	1.1	1.73	0.45	1.28	0	0.64	MPB	0.500	1.125	1.12	0.0047	ST	
P36-5MGT-25	36	2.256	2.211	2.375	AF	---	---	1.1	0.88	0	1.29	0.41	0.65	1.108	0.500	1.000	0.50	0.0021	ST	
P38-5MGT-25-MPB	38	2.381	2.336	2.625	6F	---	1.96	1.1	1.73	0.45	1.28	0	0.64	MPB	0.500	1.250	1.35	0.0064	ST	
P38-5MGT-25	38	2.381	2.336	2.625	AF	---	---	1.1	0.88	0.00	1.29	0.41	0.65	1.108	0.500	1.000	0.61	0.0029	ST	
P40-5MGT-25-MPB	40	2.506	2.461	2.750	6F	---	2.09	1.1	1.78	0.50	1.28	0	0.64	MPB	0.500	1.312	1.50	0.0079	ST	
P40-5MGT-25	40	2.506	2.461	2.750	AF	---	---	1.1	0.88	0	1.29	0.41	0.65	1.108	0.500	1.000	0.72	0.0038	ST	
P44-5MGT-25	44	2.757	2.712	3.094	AF	---	---	1.1	0.88	0	1.29	0.41	0.65	1.108	0.500	1.000	0.95	0.0061	ST	
P45-5MGT-25-MPB	45	2.820	2.775	3.094	6F	---	2.34	1.1	1.78	0.50	1.28	0	0.64	MPB	0.500	1.500	2.00	0.0134	ST	
P48-5MGT-25	48	3.008	2.963	3.330	AF	---	---	1.1	1.00	0	1.28	0.28	0.64	1210	0.500	1.250	0.97	0.0074	DI	
P50-5MGT-25-MPB	50	3.133	3.088	3.330	6F	---	2.50	1.1	1.78	0.50	1.28	0	0.64	MPB	0.500	1.750	2.30	0.0190	DI	
P52-5MGT-25	52	3.258	3.213	3.566	AF	---	---	1.1	1.00	0	1.28	0.28	0.64	1210	0.500	1.250	1.17	0.0105	DI	
P56-5MGT-25	56	3.509	3.464	3.800	AF	---	---	1.1	1.00	0	1.28	0.28	0.64	1610	0.500	1.688	1.37	0.0143	DI	
P60-5MGT-25	60	3.760	3.715	4.044	AF	---	---	1.1	1.00	0	1.28	0.28	0.64	1610	0.500	1.688	1.68	0.0201	DI	
P64-5MGT-25	64	4.010	3.965	4.170	AF	---	---	1.1	1.00	0	1.28	0.28	0.64	1610	0.500	1.688	2.00	0.0273	DI	
P68-5MGT-25	68	4.261	4.216	4.520	AF	---	---	1.1	1.25	0.03	1.28	0	0.64	2012	0.500	2.125	2.40	0.0370	DI	
P72-5MGT-25	72	4.511	4.466	4.670	AF	---	---	1.1	1.25	0.03	1.28	0	0.64	2012	0.500	2.125	2.70	0.0468	DI	
P80-5MGT-25	80	5.013	4.968	---	A	---	---	---	1.25	0.03	1.28	0	0.64	2012	0.500	2.125	3.60	0.0771	DI	
P90-5MGT-25	90	5.639	5.594	---	A	---	---	---	1.25	0.03	1.28	0	0.64	2012	0.500	2.125	5.00	0.1358	DI	
P112-5MGT-25	112	7.018	6.973	---	A	---	---	---	1.25	0.03	1.28	0	0.64	2012	0.500	2.125	8.30	0.3503	DI	

Material Spec: S - Steel SS - Sintered Steel G - Grey Iron D - Ductile Iron  
Design Type Suffix: 1 - Solid 2 - Web 3 - Arms

NOTES: • Weights for Minimum Plain Bore (MPB) Sprockets are with minimum bore • Weights and WR<sup>2</sup> for Bushed Sprockets do not include bushings. • WR<sup>2</sup> values have lb-ft<sup>2</sup> units.

Details shown which do not affect drive function may be changed without notification.





## NOTES





## 8mm Pitch PowerGrip® GT<sup>2</sup> Sprocket Specifications

Sprocket Number	Number of Teeth	Diameters (in)			Design Type	Dimensions (in)										Approx. Wt. (lb)	Approx. WR <sup>2</sup>	Mati. Spec.	
		Pitch	O.D.	Flange Ref.		A	B	C	D	E	F	M	F-CL	Bushing Size	Bore Sizes				
															Min.				Max.
P22-8MGT-12	22	2.206	2.152	2.61	AF-1	-	-	0.60	0.88	0.00	0.88	0.00	0.44	1008	0.500	1.000	0.35	0.00172	G
P23-8MGT-12	23	2.306	2.250	2.76	AF-1	-	-	0.60	0.88	0.00	0.88	0.00	0.44	1008	0.500	1.000	0.44	0.00230	G
P24-8MGT-12	24	2.406	2.350	2.76	AF-1	-	-	0.60	0.88	0.00	0.88	0.00	0.44	1008	0.500	1.000	0.49	0.00273	G
P25-8MGT-12	25	2.506	2.450	2.91	AF-1	-	-	0.60	0.88	0.00	0.88	0.00	0.44	1108	0.500	1.125	0.51	0.00322	G
P26-8MGT-12	26	2.607	2.550	2.91	AF-1	-	-	0.60	0.88	0.00	0.88	0.00	0.44	1108	0.500	1.125	0.56	0.00368	G
P27-8MGT-12	27	2.707	2.650	3.21	AF-1	-	-	0.60	0.88	0.00	0.88	0.00	0.44	1108	0.500	1.125	0.63	0.00485	G
P28-8MGT-12	28	2.807	2.750	3.21	AF-1	-	-	0.60	0.88	0.00	0.88	0.00	0.44	1108	0.500	1.125	0.74	0.00555	G
P29-8MGT-12	29	2.907	3.150	3.41	AF-1	-	-	0.72	1.00	0.00	1.00	0.00	0.50	1210	0.500	1.250	0.85	0.00691	G
P30-8MGT-12	30	3.008	3.150	3.33	AF-1	-	-	0.80	1.00	0.00	1.00	0.00	0.50	1210	0.500	1.250	0.98	0.00804	G
P31-8MGT-12	31	3.108	3.150	3.33	AF-1	-	-	0.80	1.00	0.00	1.00	0.00	0.50	1210	0.500	1.250	0.98	0.00804	G
P32-8MGT-12	32	3.208	3.150	3.61	AF-1	-	-	0.72	1.00	0.00	1.00	0.00	0.50	1210	0.500	1.250	1.07	0.01125	G
P33-8MGT-12	33	3.308	3.250	3.57	AF-1	-	-	0.80	1.00	0.00	1.00	0.00	0.50	1210	0.500	1.250	1.25	0.01390	G
P34-8MGT-12	34	3.409	3.360	3.81	AF-1	-	-	0.80	1.00	0.00	1.00	0.00	0.50	1210	0.500	1.250	1.38	0.01620	G
P35-8MGT-12	35	3.509	3.460	3.81	AF-1	-	-	0.80	1.00	0.00	1.00	0.00	0.50	1210	0.500	1.250	1.45	0.01770	G
P36-8MGT-12	36	3.609	3.560	4.01	AF-1	-	-	0.72	1.00	0.00	1.00	0.00	0.50	1210	0.500	1.250	1.55	0.01958	G
P37-8MGT-12	37	3.709	3.660	4.04	AF-1	-	-	0.80	1.00	0.00	1.00	0.00	0.50	1210	0.500	1.250	1.84	0.02299	G
P38-8MGT-12	38	3.810	3.760	4.21	AF-1	-	-	0.72	1.00	0.00	1.00	0.00	0.50	1210	0.500	1.250	1.82	0.02522	G
P40-8MGT-12	40	4.010	3.960	4.41	BF-1	-	3.25	0.57	1.00	0.00	0.85	0.15	0.43	1210	0.500	1.250	2.08	0.02928	G
P44-8MGT-12	44	4.411	4.360	4.76	BF-1	-	3.63	0.57	1.00	0.00	0.85	0.15	0.43	1610	0.500	1.688	2.32	0.04351	G
P48-8MGT-12	48	4.812	4.760	5.21	BF-1	-	3.63	0.57	1.00	0.00	0.85	0.15	0.43	1610	0.500	1.688	2.89	0.06208	G
P56-8MGT-12	56	5.614	5.560	6.01	BF-1	-	3.63	0.57	1.00	0.00	0.85	0.15	0.43	1610	0.500	1.688	4.23	0.11864	G
P60-8MGT-12	60	6.015	5.960	6.42	BF-1	-	3.63	0.57	1.00	0.00	0.85	0.15	0.43	1610	0.500	1.688	4.86	0.15256	G
P64-8MGT-12	64	6.416	6.360	6.72	CF-1	5.71	3.63	0.57	1.00	0.08	0.85	0.07	0.51	1610	0.500	1.688	4.43	0.15333	G
P72-8MGT-12	72	7.218	7.160	7.50	CF-1	6.51	3.63	0.57	1.00	0.09	0.85	0.06	0.52	1610	0.500	1.688	5.51	0.23980	G
P80-8MGT-12	80	8.020	7.970	8.42	CF-1	7.23	3.36	0.57	1.00	0.09	0.85	0.06	0.52	1610	0.500	1.688	6.74	0.36155	G
P90-8MGT-12	90	9.023	8.970	8.97	C-1	8.38	3.63	0.85	1.00	0.09	0.85	0.06	0.52	1610	0.500	1.688	8.68	0.60674	G

Material Spec: S - Steel SS - Sintered Steel G - Grey Iron D - Ductile Iron  
Design Type Suffix: 1 - Solid 2 - Web 3 - Arms

NOTES: • Weights for Minimum Plain Bore (MPB) Sprockets are with minimum bore • Weights and WR<sup>2</sup> for Bushed Sprockets do not include bushings. • WR<sup>2</sup> values have lb-ft<sup>2</sup> units.

Details shown which do not affect drive function may be changed without notification.





# 8mm Pitch PowerGrip® GT<sup>2</sup> Sprocket Specifications

Sprocket Number	Number of Teeth	Diameters (in)			Design Type	Dimensions (in)											Approx. Wt. (lb)	Approx. WR <sup>2</sup>	Mati. Spec.
		Pitch	O.D.	Flange Ref.		A	B	C	D	E	F	M	F-CL	Bushing Size	Bore Sizes				
															Min.	Max.			
P22-8MGT-20	22	2.206	2.152	2.559	AF-1	1.55	-	0.85	0.88	0	1.14	0.26	0.57	1108	0.500	1.125	0.5	0.002	D
P24-8MGT-20	24	2.406	2.352	2.756	AF-1	1.55	-	0.85	0.88	0	1.14	0.26	0.57	1108	0.500	1.125	0.7	0.004	D
P25-8MGT-20	25	2.506	2.452	2.760	AF-1	1.79	-	0.85	0.88	0	1.13	0.26	0.57	1108	0.500	1.125	0.8	0.008	D
P26-8MGT-20	26	2.607	2.553	2.953	AF-1	1.55	-	0.85	0.88	0	1.14	0.26	0.57	1108	0.500	1.125	0.9	0.006	D
P27-8MGT-20	27	2.707	2.653	3.210	AF-1	2.07	-	0.85	0.88	0	1.13	0.26	0.57	1108	0.500	1.125	1.1	0.010	D
P28-8MGT-20	28	2.807	2.753	3.150	AF-1	1.10	-	0.85	0.88	0.26	1.14	0	0.57	1108	0.500	1.125	1.2	0.009	D
P29-8MGT-20	29	2.907	2.853	3.090	AF-1	2.22	-	0.93	0.88	0	1.13	0.25	0.57	1108	0.500	1.125	1.3	0.011	D
P30-8MGT-20	30	3.007	2.954	3.346	AF-1	1.20	-	0.93	1.00	0.13	1.13	0	0.57	1210	0.500	1.250	1.2	0.011	D
P31-8MGT-20	31	3.108	3.054	3.330	AF-1	2.47	-	0.93	1.00	0.13	1.13	0	0.57	1210	0.500	1.250	1.4	0.013	D
P32-8MGT-20	32	3.208	3.154	3.543	AF-1	1.91	-	0.85	1.00	0	1.13	0.13	0.57	1210	0.500	1.250	1.4	0.015	D
P33-8MGT-20	33	3.308	3.254	3.810	AF-1	2.67	-	0.85	1.00	0	1.13	0.13	0.57	1210	0.500	1.250	1.5	0.018	D
P34-8MGT-20	34	3.409	3.355	3.819	AF-1	1.60	-	0.85	1.00	0.13	1.13	0	0.57	1610	0.500	1.688	1.4	0.018	D
P35-8MGT-20	35	3.509	3.455	3.810	AF-1	2.86	-	0.93	1.00	0	1.13	0.13	0.57	1610	0.500	1.688	1.6	0.022	D
P36-8MGT-20	36	3.609	3.555	3.937	AF-1	1.60	-	0.85	1.00	0.13	1.13	0	0.57	1610	0.500	1.688	1.7	0.024	D
P37-8MGT-20	37	3.709	3.655	4.040	AF-1	3.06	-	0.93	1.00	0	1.13	0.13	0.57	1610	0.500	1.688	1.9	0.027	D
P38-8MGT-20	38	3.810	3.756	4.134	AF-1	1.60	-	0.85	1.00	0.13	1.13	0	0.57	1610	0.500	1.688	2.0	0.032	G
P39-8MGT-20	39	3.910	3.856	4.410	AF-1	3.26	-	0.85	1.00	0	1.13	0.13	0.57	1610	0.500	1.688	2.3	0.033	G
P40-8MGT-20	40	4.010	3.956	4.331	AF-1	1.60	-	0.85	1.00	0.13	1.13	0	0.57	1610	0.500	1.688	2.4	0.040	G
P42-8MGT-20	42	4.211	4.157	4.911	AF-1	3.47	-	0.85	1.00	0	1.13	0.13	0.57	1610	0.500	1.688	2.6	0.044	G
P44-8MGT-20	44	4.411	4.357	4.764	BF-1	-	3.88	0.85	1.25	0	1.12	0.13	0.56	2012	0.500	2.125	2.7	0.058	G
P46-8MGT-20	46	4.612	4.558	4.910	BF-1	-	0	0.97	1.25	0	1.12	0.13	0.56	2012	0.500	2.125	3.2	0.062	G
P48-8MGT-20	48	4.812	4.758	5.157	BF-1	-	4.25	0.85	1.25	0	1.12	0.13	0.56	2012	0.500	2.125	3.7	0.091	G
P50-8MGT-20	50	5.013	4.959	5.413	BF-1	-	4.18	0.85	1.25	0	1.12	0.13	0.56	2012	0.500	2.125	4.5	0.073	G
P53-8MGT-20	53	5.314	5.260	5.763	BF-1	-	0	0.93	1.25	0	1.12	0	0.56	2012	0.500	2.125	5.0	0.133	G
P56-8MGT-20	56	5.614	5.560	5.945	BF-1	-	4.38	0.85	1.25	0	1.12	0.13	0.56	2012	0.500	2.125	5.6	0.176	G
P64-8MGT-20	64	6.416	6.362	6.772	BF-1	-	4.38	0.85	1.25	0	1.12	0.13	0.56	2012	0.500	2.125	7.7	0.307	G
P72-8MGT-20	72	7.218	7.164	7.598	BF-1	-	4.38	0.85	1.25	0	1.12	0.13	0.56	2012	0.500	2.125	10.2	0.499	G
P80-8MGT-20	80	8.020	7.966	8.386	BF-1	-	4.88	0.85	1.75	0	1.12	0.63	0.56	2517	0.500	2.688	13.1	0.772	G
P90-8MGT-20	90	9.023	8.969	-	C-2	7.90	4.88	-	1.75	0.31	1.13	0.31	0.88	2517	0.500	2.688	12.5	0.903	G
P112-8MGT-20	112	11.229	11.175	-	C-2	10.51	4.88	-	1.75	0.31	1.13	0.31	0.88	2517	0.500	2.688	15.8	1.590	G
P144-8MGT-20	144	14.437	14.383	-	C-3	13.20	4.88	-	1.75	0.56	1.13	0	1.13	2517	0.500	2.688	24.7	1.890	G
P192-8MGT-20	192	19.249	19.195	-	C-3	18.45	6.25	-	2.00	0.44	1.13	0.44	1.00	3020	0.500	3.250	31.6	5.370	G

Material Spec: S - Steel SS - Sintered Steel G - Grey Iron D - Ductile Iron  
Design Type Suffix: 1 - Solid 2 - Web 3 - Arms

NOTES: • Weights for Minimum Plain Bore (MPB) Sprockets are with minimum bore • Weights and WR<sup>2</sup> for Bushed Sprockets do not include bushings. • WR<sup>2</sup> values have lb-ft<sup>2</sup> units.

Details shown which do not affect drive function may be changed without notification.





## 8mm Pitch PowerGrip® GT<sup>2</sup> Sprocket Specifications

Sprocket Number	Number of Teeth	Diameters (in)			Design Type	Dimensions (in)										F-CL	Bushing Size	Bore Sizes		Approx. Wt. (lb)	Approx. WR <sup>2</sup>	Mati. Spec.
		Pitch	O.D.	Flange Ref.		A	B	C	D	E	F	M	Max.	Min.	Max.							
P22-8MGT-30	22	2.206	2.152	2.559	AF-1	1.55	-	1.22	0.88	0	1.50	0.63	0.75	1108	0.500	1.125	0.6	0.003	D			
P24-8MGT-30	24	2.406	2.352	2.756	AF-1	1.55	-	1.22	0.88	0	1.50	0.63	0.75	1108	0.500	1.125	0.9	0.005	D			
P25-8MGT-30	25	2.506	2.452	2.730	AF-1	1.83	-	1.30	0.88	0	1.50	0.63	0.75	1108	0.500	1.125	1.0	0.009	D			
P26-8MGT-30	26	2.607	2.553	2.953	AF-1	1.75	-	1.22	0.88	0	1.50	0.63	0.75	1108	0.500	1.125	1.1	0.008	D			
P27-8MGT-30	27	2.707	2.653	3.210	AF-1	2.03	-	1.22	0.88	0	1.50	0.63	0.75	1108	0.500	1.125	1.4	0.011	D			
P28-8MGT-30	28	2.807	2.753	3.150	AF-1	1.55	-	1.22	0.88	0	1.50	0.63	0.75	1108	0.500	1.125	1.5	0.012	G			
P29-8MGT-30	29	2.907	2.853	3.090	AF-1	2.22	-	1.30	0.88	0	1.50	0.62	0.75	1108	0.500	1.125	1.6	0.012	D			
P30-8MGT-30	30	3.008	2.954	3.346	AF-1	1.91	-	1.22	1.00	0	1.50	0.50	0.75	1210	0.500	1.250	1.5	0.015	D			
P31-8MGT-30	31	3.108	3.054	3.410	AF-1	2.38	-	1.22	1.00	0	1.50	0.50	0.75	1210	0.500	1.250	1.7	0.018	D			
P32-8MGT-30	32	3.208	3.154	3.543	AF-1	2.19	-	1.22	1.00	0	1.50	0.50	0.75	1210	0.500	1.250	1.7	0.019	D			
P33-8MGT-30	33	3.308	3.254	3.570	AF-1	2.63	-	1.30	1.00	0	1.50	0.50	0.75	1210	0.500	1.250	1.8	0.020	D			
P34-8MGT-30	34	3.409	3.355	3.819	AF-1	2.29	-	1.22	1.00	0	1.50	0.50	0.75	1610	0.500	1.688	1.8	0.024	D			
P35-8MGT-30	35	3.509	3.455	3.810	AF-1	2.82	-	1.30	1.00	0	1.50	0.50	0.75	1610	0.500	1.688	2.0	0.024	D			
P36-8MGT-30	36	3.609	3.555	3.937	AF-1	2.29	-	1.22	1.00	0	1.50	0.50	0.75	1610	0.500	1.688	2.2	0.032	D			
P37-8MGT-30	37	3.709	3.655	4.040	AF-1	3.02	-	1.30	1.00	0	1.50	0.50	0.75	1610	0.500	1.688	2.3	0.027	D			
P38-8MGT-30	38	3.810	3.756	4.134	AF-1	2.53	-	1.22	1.00	0	1.50	0.50	0.75	1610	0.500	1.688	2.5	0.040	D			
P39-8MGT-30	39	3.910	3.856	4.410	AF-1	3.22	-	1.22	1.00	0	1.50	0.50	0.75	1610	0.500	1.688	2.5	0.034	G			
P40-8MGT-30	40	4.010	3.956	4.331	AF-1	3.00	-	1.22	1.25	0	1.50	0.25	0.75	2012	0.500	2.125	2.3	0.045	G			
P42-8MGT-30	42	4.211	4.157	4.910	AF-1	3.47	-	1.22	1.25	0	1.50	0.25	0.75	2012	0.500	2.125	3.0	0.053	G			
P44-8MGT-30	44	4.411	4.357	4.764	AF-1	3.50	-	1.22	1.25	0	1.50	0.25	0.75	2012	0.500	2.125	3.2	0.071	G			
P46-8MGT-30	46	4.612	4.558	4.910	AF-1	3.62	-	1.22	1.25	0	1.50	0.25	0.75	2012	0.500	2.125	3.9	0.069	G			
P48-8MGT-30	48	4.812	4.758	5.157	AF-1	3.80	-	1.22	1.25	0	1.50	0.25	0.75	2012	0.500	2.125	4.2	0.106	G			
P50-8MGT-30	50	5.013	4.959	5.410	AF-1	4.13	-	1.22	1.25	0	1.50	0.25	0.75	2012	0.500	2.125	5.0	0.110	G			
P53-8MGT-30	53	5.314	5.260	6.110	AF-1	4.22	-	1.22	1.25	0	1.54	0.29	0.77	2012	0.500	2.125	6.2	0.153	G			
P56-8MGT-30	56	5.614	5.560	5.945	AF-1	4.60	-	1.22	1.25	0	1.50	0.25	0.75	2012	0.500	2.125	6.3	0.208	G			
P64-8MGT-30	64	6.416	6.362	6.772	BF-1	-	4.88	1.22	1.75	0	1.50	0.25	0.75	2517	0.500	2.688	9.5	0.404	G			
P72-8MGT-30	72	7.218	7.164	7.598	BF-1	-	4.88	1.22	1.75	0	1.50	0.25	0.75	2517	0.500	2.688	12.8	0.659	G			
P80-8MGT-30	80	8.020	7.966	8.386	BF-1	-	4.88	1.22	1.75	0	1.50	0.25	0.75	2517	0.500	2.688	16.5	1.019	G			
P90-8MGT-30	90	9.023	8.969	-	C-2	7.90	4.88	-	1.75	0.13	1.50	0.12	0.75	2517	0.500	2.688	21.6	1.650	G			
P112-8MGT-30	112	11.229	11.175	-	C-2	10.00	4.88	-	1.75	0.13	1.50	0.12	0.75	2517	0.500	2.688	25.4	3.420	G			
P144-8MGT-30	144	14.437	14.383	-	C-2	13.20	4.88	-	1.88	0.38	1.50	0	0.75	2517	0.500	2.688	31.0	6.014	G			
P192-8MGT-30	192	19.249	19.195	-	C-3	18.41	6.25	-	2.00	0.25	1.50	0.25	1.00	3020	0.500	3.250	33.4	7.270	G			

Material Spec: S - Steel SS - Sintered Steel G - Grey Iron D - Ductile Iron  
Design Type Suffix: 1 - Solid 2 - Web 3 - Arms

NOTES: • Weights for Minimum Plain Bore (MPB) Sprockets are with minimum bore • Weights and WR<sup>2</sup> for Bushed Sprockets do not include bushings. • WR<sup>2</sup> values have lb-ft<sup>2</sup> units.

Details shown which do not affect drive function may be changed without notification.





# 8mm Pitch PowerGrip® GT<sup>2</sup> Sprocket Specifications

Sprocket Number	Number of Teeth	Diameters (in)			Design Type	Dimensions (in)											Approx. Wt. (lb)	Approx. WR <sup>2</sup>	Mati. Spec.
		Pitch	O.D.	Flange Ref.		A	B	C	D	E	F	M	F-CL	Bushing Size	Bore Sizes				
															Min.	Max.			
P28-8MGT-50-MPB	28	2.807	2.753	3.207	6F-1	1.80	2.34	2.10	2.50	0.62	2.38	0.50	1.19	MPB	0.500	1.500	3.7	0.024	D
P30-8MGT-50	30	3.008	2.954	3.346	AF-1	2.00	—	2.10	1.00	0	2.38	0.500	1.19	1210	0.500	1.250	2.2	0.023	D
P32-8MGT-50	32	3.208	3.154	3.543	AF-1	2.36	—	2.10	1.00	0	2.38	0.500	1.19	1210	0.500	1.250	2.3	0.028	D
P34-8MGT-50	34	3.409	3.355	3.819	AF-1	2.57	—	2.10	1.00	0	2.38	0.500	1.19	1610	0.500	1.688	4.0	0.045	D
P36-8MGT-50	36	3.609	3.555	3.937	AF-1	2.77	—	2.10	1.00	0	2.38	0.500	1.19	1610	0.500	1.688	2.7	0.043	G
P38-8MGT-50	38	3.810	3.756	4.134	AF-1	2.97	—	2.10	1.00	0	2.38	0.500	1.19	1610	0.500	1.688	3.1	0.054	G
P40-8MGT-50	40	4.010	3.956	4.331	AF-1	2.97	—	2.10	1.25	0	2.38	0.500	1.19	2012	0.500	2.125	3.5	0.068	D
P44-8MGT-50	44	4.411	4.357	4.764	AF-1	3.50	—	2.10	1.25	0	2.38	0.500	1.19	2012	0.500	2.125	4.3	0.099	G
P48-8MGT-50	48	4.812	4.758	5.157	AF-1	3.80	—	2.10	1.25	0	2.38	0.500	1.19	2012	0.500	2.125	5.5	0.149	G
P56-8MGT-50	56	5.614	5.560	5.945	AF-1	4.60	—	2.10	1.75	0	2.38	0.500	1.19	2517	0.500	2.688	8.1	0.295	G
P64-8MGT-50	64	6.416	6.362	6.772	AF-1	5.40	—	2.10	1.75	0	2.38	0.500	1.19	2517	0.500	2.688	11.7	0.527	G
P72-8MGT-50	72	7.218	7.164	7.598	AF-1	6.20	—	2.10	1.75	0	2.38	0.500	1.19	2517	0.500	2.688	15.7	0.862	G
P80-8MGT-50	80	8.020	7.966	8.386	AF-1	6.90	—	2.10	1.75	0	2.38	0.500	1.19	2517	0.500	2.688	20.3	1.343	G
P90-8MGT-50	90	9.023	8.969	—	A-1	7.90	—	—	2.00	0	2.38	0.38	1.19	3020	0.875	3.250	26.9	2.277	G
P112-8MGT-50	112	11.229	11.175	—	A-2	10.00	—	—	2.00	0	2.38	0.38	1.19	3020	0.875	3.250	29.8	3.746	G
P144-8MGT-50	144	14.437	14.383	—	A-3	13.49	—	—	2.00	0	2.39	0.39	1.19	3020	0.875	3.250	49.0	8.988	D
P192-8MGT-50	192	19.249	19.195	—	A-3	18.00	—	—	2.00	0	2.38	0.38	1.19	3020	0.875	3.250	108.0	32.21	G

Material Spec: S - Steel SS - Sintered Steel G - Grey Iron D - Ductile Iron  
Design Type Suffix: 1 - Solid 2 - Web 3 - Arms

NOTES: • Weights for Minimum Plain Bore (MPB) Sprockets are with minimum bore • Weights and WR<sup>2</sup> for Bushed Sprockets do not include bushings. • WR<sup>2</sup> values have lb-ft<sup>2</sup> units.

Details shown which do not affect drive function may be changed without notification.





## 8mm Pitch PowerGrip® GT<sup>2</sup> Sprocket Specifications

Sprocket Number	Number of Teeth	Diameters (in)			Dimensions (in)										Approx. Wt. (lb)	Approx. WRF <sup>2</sup>	Mati. Spec.		
		Pitch	O.D.	Flange Ref.	Design Type	A	B	C	D	E	F	M	F-CL	Bushing Size				Bore Sizes	
																		Min.	Max.
P34-8MGT-85	34	3.409	3.355	3.819	AF-1	2.52	—	3.47	1.50	0.75	3.75	1.50	1.88	1615	0.500	1.688	3.9	0.054	G
P36-8MGT-85	36	3.609	3.555	4.009	AF-1	2.72	—	3.47	1.50	0.75	3.75	1.50	1.88	1615	0.500	1.688	4.4	0.069	G
P38-8MGT-85	38	3.810	3.756	4.210	AF-1	3.00	—	3.47	1.00	1.38	3.75	1.38	1.88	1610	0.500	1.688	4.3	0.077	G
P40-8MGT-85	40	4.010	3.956	4.410	AF-1	3.12	—	3.47	1.25	1.25	3.75	1.25	1.88	2012	0.500	2.125	4.7	0.097	D
P44-8MGT-85	44	4.411	4.357	4.764	AF-1	3.50	—	3.47	1.25	1.25	3.75	1.25	1.88	2012	0.500	2.125	5.9	0.144	G
P48-8MGT-85	48	4.812	4.758	5.212	AF-1	3.80	—	3.47	1.25	1.25	3.75	1.25	1.88	2012	0.500	2.125	7.6	0.214	G
P56-8MGT-85	56	5.614	5.560	6.014	AF-1	4.60	—	3.47	1.75	0.81	3.75	1.19	1.88	2517	0.500	2.688	10.6	0.405	G
P64-8MGT-85	64	6.416	6.362	6.716	AF-1	5.40	—	3.47	1.75	0.59	3.75	1.41	1.88	2517	0.500	2.688	14.5	0.698	G
P72-8MGT-85	72	7.218	7.164	7.500	AF-1	6.20	—	3.47	2.00	0.88	3.76	0.88	1.88	3020	0.875	3.250	18.0	1.121	G
P80-8MGT-85	80	8.020	7.966	8.420	AF-1	7.20	—	3.47	2.00	0.50	3.75	1.25	1.88	3020	0.875	3.250	22.4	1.642	G
P90-8MGT-85	90	9.023	8.969	—	A-1	7.90	—	—	2.00	0.50	3.75	1.25	1.88	3020	0.875	3.250	31.5	2.846	G
P112-8MGT-85	112	11.229	11.175	—	D-1	10.00	6.25	—	2.00	0.50	3.75	1.25	1.88	3020	0.875	3.250	33.2	4.621	G
P144-8MGT-85	144	14.437	14.383	—	D-1	13.44	6.56	—	3.50	0	3.75	0.25	1.88	3535	1.188	3.938	54.1	11.06	G
P192-8MGT-85	192	19.249	19.195	—	D-1	18.00	7.00	—	3.50	0.13	3.76	0.13	1.88	3535	1.188	3.938	125.0	39.63	G

Material Spec: S - Steel SS - Sintered Steel G - Grey Iron D - Ductile Iron  
Design Type Suffix: 1 - Solid 2 - Web 3 - Arms

NOTES: • Weights for Minimum Plain Bore (MPB) Sprockets are with minimum bore • Weights and WRF for Bushed Sprockets do not include bushings. • WRF values have lb-ft<sup>2</sup> units.

Details shown which do not affect drive function may be changed without notification.





# 14mm Pitch PowerGrip® GT®2 Sprocket Specifications

Sprocket Number	Number of Teeth	Diameters (in)			Design Type	Dimensions (in)										Approx. Wt. (lb)	Approx. Wt. (kg)	Mati. Spec.	
		Pitch	O.D.	Flange Ref.		A	B	C	D	E	F	M	F-CL	Bushing Size	Bore Sizes				
															Min.				Max.
P28-14MGT-40	28	4.912	4.802	5.560	AF-1	3.13	-	1.81	1.25	0	2.13	0.88	1.06	2012	0.500	2.125	5.9	0.153	G
P29-14MGT-40	29	5.088	4.978	5.560	AF-1	3.15	-	1.81	1.25	0	2.13	0.88	1.06	2012	0.500	2.125	6.6	0.181	G
P30-14MGT-40	30	5.263	5.153	6.125	AF-1	3.85	-	1.81	1.25	0	2.13	0.88	1.06	2012	0.500	2.125	6.5	0.193	G
P31-14MGT-40	31	5.439	5.329	6.110	AF-1	4.22	-	1.81	1.25	0	2.13	0.88	1.06	2012	0.500	2.125	7.5	0.164	G
P32-14MGT-40	32	5.614	5.504	6.125	AF-1	3.92	-	1.81	1.25	0	2.13	0.88	1.06	2012	0.500	2.125	8.0	0.265	G
P33-14MGT-40	33	5.790	5.680	6.470	AF-1	4.53	-	1.81	1.25	0	2.13	0.88	1.06	2012	0.500	2.125	9.0	0.208	G
P34-14MGT-40	34	5.965	5.855	6.500	AF-1	4.06	-	1.81	1.25	0	2.13	0.88	1.06	2012	0.500	2.125	9.4	0.349	G
P35-14MGT-40	35	6.141	6.031	6.820	AF-1	4.95	-	1.81	1.25	0	2.13	0.88	1.06	2012	0.500	2.125	10.0	0.269	G
P36-14MGT-40	36	6.316	6.206	6.875	AF-1	4.69	-	1.81	1.75	0	2.13	0.38	1.06	2517	0.500	2.688	10.5	0.444	G
P37-14MGT-40	37	6.492	6.382	7.170	AF-1	5.27	-	1.81	1.75	0	2.13	0.38	1.06	2517	0.500	2.688	11.7	0.392	G
P38-14MGT-40	38	6.667	6.557	7.219	AF-1	4.94	-	1.81	1.75	0	2.13	0.38	1.06	2517	0.500	2.688	12.2	0.565	G
P39-14MGT-40	39	6.842	6.732	7.520	AF-1	5.54	-	1.81	1.75	0	2.13	0.38	1.06	2517	0.500	2.688	13.7	0.502	G
P40-14MGT-40	40	7.018	6.908	7.500	AF-1	5.06	-	1.81	1.75	0	2.13	0.38	1.06	2517	0.500	2.688	14.2	0.713	G
P42-14MGT-40	42	7.369	7.259	8.040	AF-1	6.16	-	1.81	1.75	0	2.13	0.38	1.06	2517	0.500	2.688	16.0	0.691	G
P44-14MGT-40	44	7.720	7.610	8.343	AF-1	6.14	-	1.81	1.75	0	2.13	0.38	1.06	2517	0.500	2.688	17.6	1.046	G
P46-14MGT-40	46	8.071	7.961	8.420	AF-1	6.88	-	1.85	1.75	0	2.13	0.38	1.06	2517	0.500	2.688	21.0	1.026	G
P48-14MGT-40	48	8.421	8.311	8.937	AF-1	6.50	-	1.81	1.75	0	2.13	0.38	1.06	2517	0.500	2.688	22.0	1.527	G
P50-14MGT-40	50	8.772	8.662	9.290	DF-1	7.44	4.88	1.81	1.75	0.19	2.13	0.19	1.06	2517	0.500	2.688	25.0	0.954	G
P52-14MGT-40	52	9.123	9.013	9.687	AF-1	7.18	-	1.81	1.75	0	2.13	0.38	1.06	2517	0.500	2.688	26.5	2.126	G
P56-14MGT-40	56	9.825	9.715	10.375	AF-1	7.88	-	1.81	1.75	0	2.13	0.38	1.06	2517	0.500	2.688	31.3	2.878	G
P60-14MGT-40	60	10.527	10.417	11.062	AF-1	8.50	-	1.81	2.00	0	2.13	0.13	1.06	3020	0.875	3.250	28.9	3.177	G
P64-14MGT-40	64	11.229	11.119	11.750	AF-1	9.25	-	1.81	2.00	0	2.13	0.13	1.06	3020	0.875	3.250	31.0	3.872	G
P68-14MGT-40	68	11.930	11.820	12.500	DF-1	10.00	6.25	1.81	2.00	0	2.13	0.13	1.06	3020	0.875	3.250	31.3	4.446	G
P72-14MGT-40	72	12.632	12.522	13.187	DF-1	10.69	6.25	1.81	2.00	0	2.13	0.13	1.06	3020	0.875	3.250	33.9	5.410	G
P80-14MGT-40	80	14.036	13.926	14.625	DF-3	12.53	5.50	1.81	2.00	0	2.13	0.13	1.06	3020	0.875	3.250	33.7	7.474	G
P90-14MGT-40	90	15.790	15.680	-	D-3	14.25	5.50	1.81	2.00	0	2.13	0.13	1.06	3020	0.875	3.250	39.7	9.396	G
P112-14MGT-40	112	19.650	19.540	-	A-3	18.09	-	-	2.00	0	2.13	0.13	1.06	3020	0.875	3.250	100.5	29.660	G
P144-14MGT-40	144	25.264	25.154	-	A-3	23.65	-	-	2.00	0	2.13	0.13	1.06	3020	0.875	3.250	154.1	75.160	G
P168-14MGT-40	168	29.475	29.365	-	A-3	27.50	-	-	2.00	0	2.13	0.13	1.06	3020	0.875	3.250	133.2	113.300	G
P192-14MGT-40	192	33.686	33.576	-	A-3	31.75	-	-	2.00	0	2.13	0.13	1.06	3020	0.875	3.250	167.6	189.800	G

Material Spec: S - Steel SS - Sintered Steel G - Grey Iron D - Ductile Iron  
Design Type Suffix: 1 - Solid 2 - Web 3 - Arms

NOTES: • Weights for Minimum Plain Bore (MPB) Sprockets are with minimum bore • Weights and WR<sup>®</sup> for Bushed Sprockets do not include bushings. • WR<sup>®</sup> values have lb-ft<sup>2</sup> units.

Details shown which do not affect drive function may be changed without notification.





## 14mm Pitch PowerGrip® GT®2 Sprocket Specifications

Sprocket Number	Number of Teeth	Diameters (in)			Design Type	Dimensions (in)										Approx. Wt. (lb)	Approx. WR <sup>2</sup>	Mati. Spec.	
		Pitch	O.D.	Flange Ref.		A	B	C	D	E	F	M	F-CL	Bore Sizes					
														Bushing Size	Min.				Max.
P28-14MGT-55	28	4.912	4.802	5.560	AF-1	3.13	—	2.43	1.25	0	2.75	1.50	1.38	2012	0.500	2.125	7.4	0.194	G
P29-14MGT-55	29	5.088	4.978	5.560	AF-1	3.13	—	2.43	1.25	0	2.75	1.50	1.38	2012	0.500	2.125	8.4	0.231	G
P30-14MGT-55	30	5.263	5.153	6.125	AF-1	3.80	—	2.43	1.75	0	2.75	1.00	1.38	2517	0.500	2.688	7.4	0.237	G
P32-14MGT-55	32	5.614	5.504	6.125	AF-1	3.92	—	2.43	1.75	0	2.75	1.00	1.38	2517	0.500	2.688	9.3	0.327	G
P34-14MGT-55	34	5.965	5.855	6.500	AF-1	4.06	—	2.43	1.75	0	2.75	1.00	1.38	2517	0.500	2.688	11.2	0.437	G
P36-14MGT-55	36	6.316	6.206	6.875	AF-1	4.69	—	2.43	1.75	0	2.75	1.00	1.38	2517	0.500	2.688	12.4	0.54	G
P38-14MGT-55	38	6.669	6.557	7.219	AF-1	4.94	—	2.43	1.75	0	2.75	1.00	1.38	2517	0.500	2.688	14.4	0.686	G
P40-14MGT-55	40	7.018	6.908	7.500	AF-1	5.06	—	2.43	1.75	0	2.75	1.00	1.38	2517	0.500	2.688	16.7	0.871	G
P44-14MGT-55	44	7.720	7.610	8.343	AF-1	6.12	—	2.43	1.75	0	2.75	1.00	1.38	2517	0.500	2.688	19.9	1.234	G
P48-14MGT-55	48	8.421	8.311	8.937	AF-1	6.50	—	2.43	2.00	0	2.75	0.75	1.38	3020	0.875	3.250	24.4	1.84	G
P52-14MGT-55	52	9.123	9.013	9.687	AF-1	7.18	—	2.43	2.00	0	2.75	0.75	1.38	3020	0.875	3.250	29.6	2.573	G
P56-14MGT-55	56	9.825	9.715	10.375	AF-1	7.88	—	2.43	2.00	0	2.75	0.75	1.38	3020	0.875	3.250	35.3	3.489	G
P60-14MGT-55	60	10.527	10.417	11.062	AF-1	8.50	—	2.43	2.00	0	2.75	0.75	1.38	3020	0.875	3.250	41.6	4.647	G
P64-14MGT-55	64	11.229	11.119	11.750	AF-1	9.25	—	2.43	2.00	0	2.75	0.75	1.38	3020	0.875	3.250	47.9	6.012	G
P68-14MGT-55	68	11.930	11.820	12.500	DF-1	10.00	6.25	2.43	2.00	0	2.75	0.75	1.38	3020	0.875	3.250	40.2	5.909	G
P72-14MGT-55	72	12.632	12.522	13.187	DF-1	10.69	6.25	2.43	2.00	0	2.75	0.75	1.38	3020	0.875	3.250	45.1	7.387	G
P80-14MGT-55	80	14.036	13.926	14.625	DF-3	12.00	5.50	2.43	2.00	0	2.75	0.75	1.38	3020	0.875	3.250	41.6	9.021	G
P90-14MGT-55	90	15.790	15.680	—	D-3	14.22	5.50	—	2.00	0	2.75	0.75	1.38	3020	0.875	3.250	45.0	12.36	G
P112-14MGT-55	112	19.650	19.540	—	D-2	18.04	6.25	—	2.00	0	2.75	0.75	1.38	3020	0.875	3.250	116.7	36.86	G
P144-14MGT-55	144	25.264	25.154	—	D-3	23.38	6.25	—	2.00	0	2.75	0.75	1.38	3020	0.875	3.250	98.0	65.38	G
P168-14MGT-55	168	29.475	29.365	—	D-3	27.50	6.25	—	2.00	0.19	2.75	0.56	1.38	3020	0.875	3.250	145.5	150.2	G
P192-14MGT-55	192	33.686	33.576	—	C-3	31.93	6.56	—	3.50	0	2.75	0.75	1.38	3535	1.188	3.938	432.3	404.3	G

Material Spec: S - Steel SS - Sintered Steel G - Grey Iron D - Ductile Iron  
Design Type Suffix: 1 - Solid 2 - Web 3 - Arms

NOTES: • Weights for Minimum Plain Bore (MPB) Sprockets are with minimum bore • Weights and WR<sup>2</sup> for Bushed Sprockets do not include bushings. • WR<sup>2</sup> values have lb-ft<sup>2</sup> units.

Details shown which do not affect drive function may be changed without notification.





# 14mm Pitch PowerGrip® GT®2 Sprocket Specifications

Sprocket Number	Number of Teeth	Diameters (in)			Design Type	Dimensions (in)										F-CL	Bushing Size	Bore Sizes		Approx. Wt. (lb)	Approx. WR <sup>2</sup>	Mati. Spec.
		Pitch	O.D.	Flange Ref.		A	B	C	D	E	F	M	Min.	Max.	Bore Sizes							
															Min.			Max.				
P28-14MGT-85	28	4.912	4.802	5.560	AF-1	3.13	—	3.68	1.25	1.31	4.00	1.44	2.00	2.00	2012	0.500	2.125	10.5	0.278	G		
P29-14MGT-85	29	5.088	4.978	5.560	AF-1	3.13	—	3.68	1.25	1.31	4.00	1.44	2.00	2.00	2012	0.500	2.125	11.9	0.332	G		
P30-14MGT-85	30	5.263	5.153	6.125	AF-1	3.78	—	3.68	1.75	0.50	4.00	1.75	2.00	2.00	2517	0.500	2.688	10.2	0.332	G		
P32-14MGT-85	32	5.614	5.504	6.125	AF-1	3.92	—	3.68	1.75	0.81	4.00	1.44	2.00	2.00	2517	0.500	2.688	12.7	0.459	G		
P34-14MGT-85	34	5.965	5.855	6.500	AF-1	4.06	—	3.68	1.75	0.81	4.00	1.44	2.00	2.00	2517	0.500	2.688	15.3	0.614	G		
P36-14MGT-85	36	6.316	6.206	6.875	AF-1	4.69	—	3.68	2.00	0.53	4.00	1.47	2.00	2.00	3020	0.875	3.250	14.4	0.694	D		
P38-14MGT-85	38	6.669	6.557	7.219	AF-1	4.94	—	3.68	2.00	0.53	4.00	1.47	2.00	2.00	3020	0.875	3.250	17.0	0.897	G		
P40-14MGT-85	40	7.018	6.908	7.500	AF-1	5.06	—	3.68	2.00	0.53	4.00	1.47	2.00	2.00	3020	0.875	3.250	20.3	1.161	G		
P44-14MGT-85	44	7.720	7.610	8.343	AF-1	6.12	—	3.68	2.00	0.53	4.00	1.47	2.00	2.00	3020	0.875	3.250	23.6	1.615	G		
P48-14MGT-85	48	8.421	8.311	8.937	AF-1	6.50	—	3.68	2.00	0.53	4.00	1.47	2.00	2.00	3020	0.875	3.250	30.6	2.432	G		
P52-14MGT-85	52	9.123	9.013	9.687	AF-1	7.18	—	3.68	3.50	0	4.00	0.50	2.00	2.00	3535	1.188	3.938	36.6	3.356	G		
P56-14MGT-85	56	9.825	9.715	10.375	AF-1	7.88	—	3.68	3.50	0	4.00	0.50	2.00	2.00	3535	1.188	3.938	52.4	5.300	G		
P60-14MGT-85	60	10.527	10.417	11.062	AF-1	8.50	—	3.68	3.50	0	4.00	0.50	2.00	2.00	3535	1.188	3.938	62.8	7.128	G		
P64-14MGT-85	64	11.229	11.119	11.750	AF-1	9.25	—	3.68	3.50	0	4.00	0.50	2.00	2.00	3535	1.188	3.938	73.6	9.334	G		
P68-14MGT-85	68	11.930	11.820	12.500	DF-1	10.00	7.00	3.68	3.50	0	4.00	0.50	2.00	2.00	3535	1.188	3.938	63.3	9.169	G		
P72-14MGT-85	72	12.632	12.522	13.187	AF-1	10.69	—	3.68	3.50	0	4.00	0.50	2.00	2.00	3535	1.188	3.938	97.4	15.19	G		
P80-14MGT-85	80	14.036	13.926	14.625	DF-2	12.13	7.00	3.68	3.50	0	4.00	0.50	2.00	2.00	3535	1.188	3.938	62.9	13.04	G		
P90-14MGT-85	90	15.790	15.680	—	D-2	14.15	7.00	—	3.50	0	4.00	0.50	2.00	2.00	3535	1.188	3.938	71.5	18.14	G		
P112-14MGT-85	112	19.650	19.540	—	D-3	17.97	6.56	—	3.50	0	4.00	0.50	2.00	2.00	3535	1.188	3.938	131.2	44.18	D		
P144-14MGT-85	144	25.264	25.154	—	D-3	23.40	7.63	—	4.00	0	4.00	0	2.00	2.00	4040	1.438	4.438	137.4	92.1	G		
P168-14MGT-85	168	29.475	29.365	—	D-3	27.70	7.63	—	4.00	0	4.00	0	2.00	2.00	4040	1.438	4.438	192.2	194.5	G		
P192-14MGT-85	192	33.686	33.576	—	D-3	31.87	7.63	—	4.00	0	4.00	0	2.00	2.00	4040	1.438	4.438	448.0	444.6	G		

Material Spec: S - Steel SS - Sintered Steel G - Grey Iron D - Ductile Iron  
Design Type Suffix: 1 - Solid 2 - Web 3 - Arms

NOTES: • Weights for Minimum Plain Bore (MPB) Sprockets are with minimum bore • Weights and WR<sup>2</sup> for Bushed Sprockets do not include bushings. • WR<sup>2</sup> values have lb-ft<sup>2</sup> units.

Details shown which do not affect drive function may be changed without notification.





## 14mm Pitch PowerGrip® GT®2 Sprocket Specifications

Sprocket Number	Number of Teeth	Diameters (in)			Dimensions (in)										Design Type	Flange Ref.	Approx. Wt. (lb)	Approx. WR <sup>2</sup>	Mati. Spec.							
		Pitch	O.D.	F-CL	Bushing Size	Bore Sizes		M	F-CL	Bushing Size	E	D	C	B						A	F	M	F-CL	Bushing Size	Min.	Max.
						Min.	Max.																			
P28-14MGT-115-MPB	28	4.912	4.802	5.562	6F-1	3.13	3.69	4.93	5.00	1.20	5.30	1.50	2.65	MPB	1.250	2.688	22.2	0.508	D							
P29-14MGT-115-MPB	29	5.088	4.978	5.562	6F-1	3.13	3.69	4.93	5.00	1.20	5.30	1.50	2.65	MPB	1.250	2.688	24.0	0.585	D							
P30-14MGT-115	30	5.263	5.153	5.763	AF-1	3.70	—	4.93	1.75	1.75	5.25	1.75	2.63	2517	0.500	2.688	13.4	0.438	G							
P32-14MGT-115	32	5.614	5.504	6.114	AF-1	3.94	—	4.93	1.75	1.75	5.25	1.75	2.63	2517	0.500	2.688	16.0	0.587	G							
P34-14MGT-115	34	5.965	5.855	6.465	AF-1	4.06	—	4.93	1.75	1.75	5.25	1.75	2.63	2517	0.500	2.688	19.5	0.790	G							
P36-14MGT-115	36	6.316	6.206	6.816	AF-1	4.74	—	4.93	2.00	1.63	5.26	1.63	2.63	3020	0.875	3.250	17.9	0.876	G							
P38-14MGT-115	38	6.669	6.557	7.167	AF-1	5.08	—	4.93	2.00	1.63	5.26	1.63	2.63	3020	0.875	3.250	20.3	1.100	G							
P40-14MGT-115	40	7.018	6.908	7.518	AF-1	5.43	—	4.93	2.00	1.63	5.26	1.63	2.63	3020	0.875	3.250	22.9	1.357	G							
P44-14MGT-115	44	7.720	7.610	8.395	AF-1	6.13	—	4.93	3.50	0.88	5.26	0.88	2.63	3535	1.188	3.938	30.3	2.144	G							
P48-14MGT-115	48	8.421	8.311	8.941	AF-1	6.50	—	4.93	3.50	0.88	5.26	0.88	2.63	3535	1.188	3.938	40.3	3.277	G							
P52-14MGT-115	52	9.123	9.013	9.687	AF-1	7.18	—	4.93	4.00	0.63	5.26	0.63	2.63	4040	1.438	4.438	46.8	4.545	G							
P56-14MGT-115	56	9.825	9.715	10.355	AF-1	7.88	—	4.93	4.00	0.63	5.26	0.63	2.63	4040	1.438	4.438	58.1	6.335	G							
P60-14MGT-115	60	10.527	10.417	11.067	AF-1	8.50	—	4.93	4.00	0.63	5.26	0.63	2.63	4040	1.438	4.438	70.4	8.589	G							
P64-14MGT-115	64	11.229	11.119	11.750	AF-1	9.25	—	4.93	4.50	0.38	5.26	0.38	2.63	4545	1.938	4.938	82.4	11.47	G							
P68-14MGT-115	68	11.930	11.820	12.500	AF-1	10.00	—	4.93	4.50	0.38	5.26	0.38	2.63	4545	1.938	4.938	97.2	14.91	G							
P72-14MGT-115	72	12.632	12.522	13.066	AF-1	10.70	—	4.93	4.50	0.38	5.26	0.38	2.63	4545	1.938	4.938	113.2	19.06	G							
P80-14MGT-115	80	14.036	13.926	14.620	AF-2	12.13	—	4.93	4.50	0.38	5.26	0.38	2.63	4545	1.938	4.938	147.5	29.66	G							
P90-14MGT-115	90	15.790	15.680	—	D-1	14.11	9.50	—	4.50	0.38	5.26	0.38	2.63	4545	1.938	4.938	116.9	28.30	G							
P112-14MGT-115	112	19.650	19.540	—	D-2	17.94	9.50	—	4.50	0	5.25	0.75	2.63	4545	1.938	4.938	173.3	64.72	G							
P144-14MGT-115	144	25.264	25.154	—	D-3	9.50	17.94	—	4.50	0.38	5.26	0.38	2.63	4545	1.938	4.938	172.2	119.8	G							
P168-14MGT-115	168	29.475	29.365	—	D-3	27.66	8.63	—	4.50	0.38	5.26	0.38	2.63	4545	1.938	4.938	223.4	243.3	G							
P192-14MGT-115	192	33.686	33.576	—	D-2	31.83	8.63	—	4.50	0.38	5.26	0.38	2.63	4545	1.938	4.938	475.0	496.5	G							
P216-14MGT-115	216	37.896	37.786	—	D-3	36.00	13.06	—	5.00	0	5.25	0.25	2.63	6050	4.438	6.000	378.0	686.1	G							

Material Spec: S - Steel SS - Sintered Steel G - Grey Iron D - Ductile Iron  
Design Type Suffix: 1 - Solid 2 - Web 3 - Arms

NOTES: • Weights for Minimum Plain Bore (MPB) Sprockets are with minimum bore • Weights and WR<sup>2</sup> for Bushed Sprockets do not include bushings. • WR<sup>2</sup> values have lb-ft<sup>2</sup> units.

Details shown which do not affect drive function may be changed without notification.





# 14mm Pitch PowerGrip® GT®2 Sprocket Specifications

Sprocket Number	Number of Teeth	Diameters (in)			Design Type	Dimensions (in)										Approx. Wt. (lb)	Approx. WR <sup>2</sup>	Mati. Spec.	
		Pitch	O.D.	Flange Ref.		A	B	C	D	E	F	M	F-CL	Bushing Size	Bore Sizes				
															Min.				Max.
P36-14MGT-170-MPB	36	6.316	6.206	6.816	6F-1	4.69	5.00	7.06	6.00	1.21	7.42	2.63	3.71	MPB	1.500	3.375	47.3	1.849	D
P38-14MGT-170-MPB	38	6.667	6.557	7.167	6F-1	4.94	5.38	7.06	6.00	1.21	7.42	2.63	3.71	MPB	1.500	3.375	53.5	2.321	D
P40-14MGT-170	40	7.018	6.908	7.518	AF-1	5.54	—	7.06	3.50	1.94	7.38	1.94	3.69	3535	1.188	3.938	28.6	1.780	G
P44-14MGT-170	44	7.720	7.610	8.395	AF-1	6.06	—	7.06	3.50	1.94	7.38	1.94	3.69	3535	1.188	3.938	38.9	2.828	G
P48-14MGT-170	48	8.421	8.311	8.941	AF-1	6.50	—	7.06	3.50	1.94	7.38	1.94	3.69	3535	1.188	3.938	51.0	4.283	G
P52-14MGT-170	52	9.123	9.013	9.687	AF-1	7.18	—	7.06	4.00	1.13	7.38	2.25	3.69	4040	1.438	4.438	58.6	5.877	G
P56-14MGT-170	56	9.825	9.715	10.355	AF-1	7.88	—	7.06	4.00	1.13	7.38	2.25	3.69	4040	1.438	4.438	70.9	8.051	G
P60-14MGT-170	60	10.527	10.417	11.067	AF-1	8.50	—	7.06	4.50	0.75	7.38	2.13	3.69	4545	1.938	4.938	82.9	10.85	G
P64-14MGT-170	64	11.229	11.119	11.750	AF-1	9.53	—	7.06	4.50	0.63	7.38	2.25	3.69	4545	1.938	4.938	94.5	13.71	G
P68-14MGT-170	68	11.930	11.820	12.500	AF-1	10.00	—	7.06	4.50	0.63	7.38	2.25	3.69	4545	1.938	4.938	113.0	18.15	G
P72-14MGT-170	72	12.632	12.522	13.066	AF-1	10.69	—	7.06	4.50	0.63	7.38	2.25	3.69	4545	1.938	4.938	130.1	23.00	G
P80-14MGT-170	80	14.036	13.926	14.625	AF-1	12.13	—	7.06	4.50	1.04	7.38	1.84	3.69	4545	1.938	4.938	166.2	35.12	G
P90-14MGT-170	90	15.790	15.680	—	D-1	14.05	9.00	—	4.50	0.63	7.38	2.25	3.69	4545	1.938	4.938	159.2	42.03	G
P112-14MGT-170	112	19.650	19.540	—	D-1	17.87	11.39	—	4.50	0	7.63	3.13	3.82	4545	1.938	4.938	215.1	81.3	G
P144-14MGT-170	144	25.284	25.154	—	D-3	23.31	13.02	—	5.00	1.19	7.38	1.19	3.69	6050	4.438	6.000	264.0	207.9	G
P168-14MGT-170	168	29.475	29.365	—	D-2	27.59	13.02	—	5.00	1.19	7.38	1.19	3.69	6050	4.438	6.000	462.0	384.2	G
P192-14MGT-170	192	33.686	33.576	—	D-3	31.76	13.02	—	5.00	1.19	7.38	1.19	3.69	6050	4.438	6.000	616.0	655.7	G
P216-14MGT-170	216	37.896	37.786	—	D-2	35.93	13.02	—	5.00	1.19	7.38	1.19	3.69	6050	4.438	6.000	563.0	851.7	D

Material Spec: S - Steel SS - Sintered Steel G - Grey Iron D - Ductile Iron  
Design Type Suffix: 1 - Solid 2 - Web 3 - Arms

NOTES: • Weights for Minimum Plain Bore (MPB) Sprockets are with minimum bore • Weights and WR<sup>2</sup> for Bushed Sprockets do not include bushings. • WR<sup>2</sup> values have lb-ft<sup>2</sup> units.

Details shown which do not affect drive function may be changed without notification.

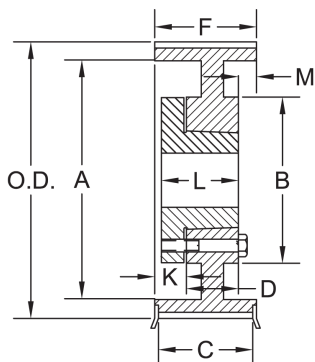




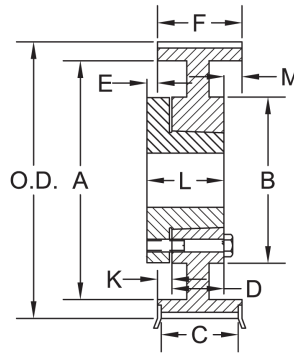
Gates PowerGrip® HTD® Sprocket Specifications

For 20mm Pitch PowerGrip® HTD® Belts

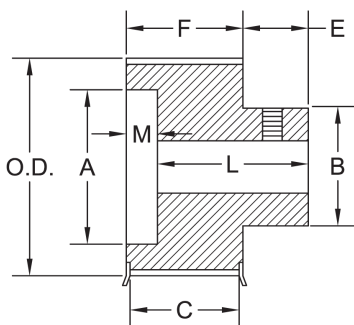
Type A



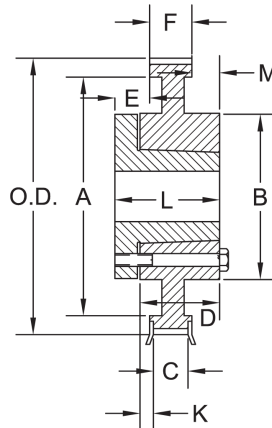
Type D



Type F

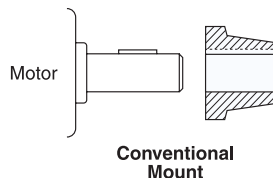
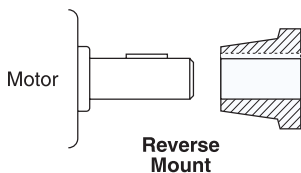


Type G



Bushing Mounting

QD® Bushing Types M - S  
mount in a  
Conventional manner only.



\* QD is a trademark of Emerson Electric





# 20mm Pitch PowerGrip® HTD® Sprocket Specifications

Sprocket Number	Number of Teeth	Diameters (in)				Design Type	Flange Ref.	Dimensions (in)										Approx. Wt. (lb)	Approx. WR <sup>2</sup>	Mati. Spec.	
		Pitch	O.D.	A	B			C	D	E	F	K	L	M	Bushing Size		Bore Sizes				
															Min.	Max.	Min.				Max.
P34-20M-115	34	8.522	8.352	9.438	A-1	9.438	6.75	0	5.00	2.50	0.06	5.38	1.44	3.75	1.44	F	1.000	4.000	36.5	2.820	G
P36-20M-115	36	9.023	8.853	9.844	A-1	9.844	6.81	0	5.00	2.50	0.06	5.38	1.44	3.75	1.44	F	1.000	4.000	46.3	3.881	G
P38-20M-115	38	9.524	9.354	10.438	A-1	10.438	7.31	0	5.00	2.50	0.06	5.38	1.44	3.75	1.44	F	1.000	4.000	51.0	4.833	G
P40-20M-115	40	10.026	9.856	10.813	A-1	10.813	7.88	0	5.00	2.50	0.06	5.38	1.44	3.75	1.44	F	1.000	4.000	57.4	5.878	G
P44-20M-115	44	11.028	10.858	11.813	A-1	11.813	8.81	0	5.00	2.50	0.06	5.38	1.44	3.75	1.44	F	1.000	4.000	70.8	8.681	G
P48-20M-115	48	12.031	11.861	12.781	D-1	12.781	9.81	0	5.00	3.19	0.38	5.38	1.19	4.63	1.00	J	1.500	4.500	90.9	13.16	G
P52-20M-115	52	13.033	12.863	13.750	D-1	13.750	10.63	0	5.00	3.19	0.38	5.38	1.19	4.63	1.00	J	1.500	4.500	110.0	18.56	G
P56-20M-115	56	14.036	13.866	14.750	D-2	14.750	11.75	9.00	5.00	3.19	0.38	5.38	1.19	4.63	1.00	J	1.500	4.500	106.0	20.02	G
P60-20M-115	60	15.038	14.868	15.906	D-2	15.906	12.81	9.00	5.00	3.19	0.38	5.38	1.19	4.63	1.00	J	1.500	4.500	116.0	25.09	G
P64-20M-115	64	16.041	15.871	16.906	D-2	16.906	13.81	9.00	5.00	3.19	0.38	5.38	1.19	4.63	1.00	J	1.500	4.500	127.0	31.22	G
P68-20M-115	68	17.043	16.873	17.906	D-2	17.906	14.75	9.00	5.00	3.19	0.38	5.38	1.19	4.63	1.00	J	1.500	4.500	148.0	41.30	G
P72-20M-115	72	18.046	17.876	18.875	D-2	18.875	15.59	9.00	5.00	3.19	0.38	5.38	1.19	4.63	1.00	J	1.500	4.500	186.0	52.29	G
P80-20M-115	80	20.051	19.881	20.875	D-2	20.875	17.75	11.38	5.00	3.19	1.50	5.38	0.19	6.75	0	M	2.000	5.500	237.0	81.91	G
P90-20M-115	90	22.557	22.387	23.406	D-2	23.406	20.31	11.38	5.00	3.19	1.50	5.38	0.19	6.75	0	M	2.000	5.500	275.0	120.1	G
P112-20M-115	112	28.071	27.901	-	D-2	-	26.38	11.38	5.00	3.19	1.50	5.38	0.19	6.75	0	M	2.000	5.500	477.0	273.2	G
P144-20M-115	144	36.092	35.922	-	G-3	-	34.38	12.00	5.00	6.25	2.00	5.38	0	8.13	0.88	N	2.438	5.875	612.0	408.3	G
P168-20M-115	168	42.107	41.937	-	G-3	-	40.38	12.00	5.00	6.25	2.00	5.38	0	8.13	0.88	N	2.438	5.875	648.0	606.1	G
P192-20M-115	192	48.122	47.952	-	G-3	-	46.25	12.00	5.00	6.25	2.00	5.38	0	8.13	0.88	N	2.438	5.875	786.0	1068	G
P216-20M-115	216	54.138	53.968	-	G-3	-	52.25	12.00	5.00	6.25	2.00	5.38	0	8.13	0.88	N	2.438	5.875	907.0	1555	G

Material Spec: S - Steel SS - Sintered Steel G - Grey Iron D - Ductile Iron  
Design Type Suffix: 1 - Solid 2 - Web 3 - Arms

NOTES: • Weights for Minimum Plain Bore (MPB) Sprockets are with minimum bore • Weights and WR<sup>2</sup> for Bushed Sprockets do not include bushings. • WR<sup>2</sup> values have lb-ft<sup>2</sup> units.

Details shown which do not affect drive function may be changed without notification.





## 20mm Pitch PowerGrip® HTD® Sprocket Specifications

Sprocket Number	Number of Teeth	Diameters (in)			Design Type	Dimensions (in)										Approx. Wt. (lb)	Approx. WR <sup>2</sup>	Mati. Spec.		
		Pitch	O.D.	Flange Ref.		A	B	C	D	E	F	K	L	M	Bushing Size				Bore Sizes Min.	Bore Sizes Max.
P34-20M-170	34	8.522	8.352	9.438	F-1	6.50	6.50	7.13	-	1.25	7.50	-	6.50	2.25	MPB	2.125	4.250	87.2	5.642	G
P36-20M-170	36	9.023	8.853	9.844	F-1	7.00	7.00	7.13	-	1.25	7.50	-	6.50	2.25	MPB	2.125	4.500	98.7	7.136	G
P38-20M-170	38	9.524	9.354	10.438	A-1	7.38	0	7.13	3.19	0.63	7.50	2.19	4.63	2.13	J	1.500	4.500	64.0	6.369	G
P40-20M-170	40	10.026	9.856	10.813	A-1	7.75	0	7.13	3.19	0.75	7.50	2.31	4.63	2.00	J	1.500	4.500	73.4	8.032	G
P44-20M-170	44	11.028	10.858	11.813	A-1	8.88	0	7.13	3.19	0.63	7.50	2.19	4.63	2.13	J	1.500	4.500	88.1	11.51	G
P48-20M-170	48	12.031	11.861	12.781	D-1	9.88	0	7.13	5.19	0.19	7.50	1.50	6.75	0.81	M	2.000	5.500	120.0	18.50	G
P52-20M-170	52	13.033	12.863	13.750	D-1	10.69	0	7.13	5.19	0.19	7.50	1.50	6.75	0.81	M	2.000	5.500	149.0	26.45	G
P56-20M-170	56	14.036	13.866	14.750	D-1	11.81	0	7.13	5.19	0.19	7.50	1.50	6.75	0.81	M	2.000	5.500	177.0	35.64	G
P60-20M-170	60	15.038	14.868	15.906	D-1	12.88	0	7.13	5.19	0.19	7.50	1.50	6.75	0.81	M	2.000	5.500	209.0	47.39	G
P64-20M-170	64	16.041	15.871	16.906	D-1	13.88	0	7.13	5.19	0.19	7.50	1.50	6.75	0.81	M	2.000	5.500	236.0	61.79	G
P68-20M-170	68	17.043	16.873	17.906	D-2	14.81	11.38	7.13	5.19	0.19	7.50	1.50	6.75	0.81	M	2.000	5.500	214.0	58.98	G
P72-20M-170	72	18.046	17.876	18.875	D-2	15.59	11.38	7.13	5.19	0.19	7.50	1.50	6.75	0.81	M	2.000	5.500	238.0	73.88	G
P80-20M-170	80	20.051	19.881	20.875	D-2	17.81	11.38	7.13	5.19	0.19	7.50	1.50	6.75	0.81	M	2.000	5.500	262.0	98.45	G
P90-20M-170	90	22.557	22.387	23.406	D-2	20.38	11.38	7.13	5.19	0.19	7.50	1.50	6.75	0.81	M	2.000	5.500	303.0	143.5	G
P112-20M-170	112	28.071	27.901	-	D-2	26.25	12.00	7.13	6.25	0.75	7.50	1.25	8.13	0	N	2.438	5.875	473.0	323.7	G
P144-20M-170	144	36.092	35.922	-	D-3	34.25	12.00	7.13	6.25	0.75	7.50	1.25	8.13	0	N	2.438	5.875	520.0	515.3	G
P168-20M-170	168	42.107	41.937	-	G-3	40.25	14.00	7.13	7.25	1.19	7.50	1.06	9.38	0.81	P	2.938	7.000	619.0	804.9	G
P192-20M-170	192	48.122	47.952	-	G-3	46.25	14.00	7.13	7.25	1.19	7.50	1.06	9.38	0.81	P	2.938	7.000	783.0	1315	G
P216-20M-170	216	54.138	53.968	-	G-3	52.13	14.00	7.13	7.25	1.19	7.50	1.06	9.38	0.81	P	2.938	7.000	902.0	1997	G

Material Spec: S - Steel SS - Sintered Steel G - Grey Iron D - Ductile Iron  
Design Type Suffix: 1 - Solid 2 - Web 3 - Arms

NOTES: • Weights for Minimum Plain Bore (MPB) Sprockets are with minimum bore • Weights and WR<sup>2</sup> for Bushed Sprockets do not include bushings. • WR<sup>2</sup> values have lb-ft<sup>2</sup> units.

Details shown which do not affect drive function may be changed without notification.







## 20mm Pitch PowerGrip® HTD® Sprocket Specifications

Sprocket Number	Number of Teeth	Diameters (in)			Design Type	Flange Ref.	Dimensions (in)										Approx. Wt. (lb)	Approx. WR <sup>2</sup>	Mati. Spec.		
		Pitch	O.D.	Pitch			A	B	C	D	E	F	K	L	M	Bore Sizes				Bushing Size	
																Min.					Max.
P52-20M-290	52	13.033	12.863	13.750	A-1	13.750	10.81	0	11.88	6.25	0.50	12.25	2.50	8.13	3.50	N	2.438	5.875	202.0	37.46	G
P56-20M-290	56	14.036	13.866	14.750	A-1	14.750	11.88	0	11.88	6.25	0.50	12.25	2.50	8.13	3.50	N	2.438	5.875	237.0	50.16	G
P60-20M-290	60	15.038	14.868	15.906	A-1	15.906	13.00	0	11.88	6.25	0.50	12.25	2.50	8.13	3.50	N	2.438	5.875	276.0	66.49	G
P64-20M-290	64	16.041	15.871	16.906	A-1	16.906	14.00	0	11.88	6.25	0.50	12.25	2.50	8.13	3.50	N	2.438	5.875	320.0	84.94	G
P68-20M-290	68	17.043	16.873	17.906	A-1	17.906	14.94	0	11.88	6.25	0.50	12.25	2.50	8.13	3.50	N	2.438	5.875	368.0	109.1	G
P72-20M-290	72	18.046	17.876	18.875	A-2	18.875	15.59	12.00	11.88	6.25	0.50	12.25	2.50	8.13	3.50	N	2.438	5.875	404.0	120.6	G
P80-20M-290	80	20.051	19.881	20.875	A-2	20.875	17.91	12.00	11.88	6.25	0.50	12.25	2.50	8.13	3.50	N	2.438	5.875	376.0	146.7	G
P90-20M-290	90	22.557	22.387	23.406	A-2	23.406	20.50	12.00	11.88	6.25	0.50	12.25	2.50	8.13	3.50	N	2.438	5.875	431.0	210.6	G
P112-20M-290	112	28.071	27.901	-	A-2	-	26.13	14.00	11.88	7.25	0.25	12.25	2.50	9.38	2.50	P	2.938	7.000	799.0	447.8	G
P144-20M-290	144	36.092	35.922	-	A-3	-	34.00	14.00	11.88	7.25	0.25	12.25	2.50	9.38	2.50	P	2.938	7.000	1004.0	818.9	G
P168-20M-290	168	42.107	41.937	-	A-3	-	40.00	17.00	11.88	9.00	0.19	12.25	2.69	11.38	0.56	W	4.000	8.500	1410.0	1669	G
P192-20M-290	192	48.122	47.952	-	A-3	-	46.00	17.00	11.88	9.00	0.19	12.25	2.69	11.38	0.56	W	4.000	8.500	1552.0	2491	G
P216-20M-290	216	54.138	53.968	-	A-3	-	52.00	17.00	11.88	9.00	0.19	12.25	2.69	11.38	0.56	W	4.000	8.500	1441.0	2991	G

Sprocket Number	Number of Teeth	Diameters (in)			Design Type	Flange Ref.	Dimensions (in)										Approx. Wt. (lb)	Approx. WR <sup>2</sup>	Mati. Spec.		
		Pitch	O.D.	Pitch			A	B	C	D	E	F	K	L	M	Bore Sizes				Bushing Size	
																Min.					Max.
P52-20M-340	52	13.033	12.863	13.750	A-1	13.750	10.81	0	13.88	6.25	0.50	14.25	2.50	8.13	5.50	N	2.438	5.875	219.0	41.49	G
P56-20M-340	56	14.036	13.866	14.750	A-1	14.750	11.88	0	13.88	6.25	0.50	14.25	2.50	8.13	5.50	N	2.438	5.875	258.0	55.14	G
P60-20M-340	60	15.038	14.868	15.906	A-1	15.906	13.06	0	13.88	6.25	0.50	14.25	2.50	8.13	5.50	N	2.438	5.875	294.0	70.61	G
P64-20M-340	64	16.041	15.871	16.906	A-1	16.906	14.06	0	13.88	6.25	0.50	14.25	2.50	8.13	5.50	N	2.438	5.875	339.0	91.26	G
P68-20M-340	68	17.043	16.873	17.906	A-1	17.906	15.00	0	13.88	6.25	0.50	14.25	2.50	8.13	5.50	N	2.438	5.875	389.0	117.1	G
P72-20M-340	72	18.046	17.876	18.875	A-2	18.875	15.59	12.00	13.88	6.25	0.50	14.25	2.50	8.13	5.50	N	2.438	5.875	438.0	133.5	G
P80-20M-340	80	20.051	19.881	20.875	A-2	20.875	18.00	14.00	13.88	7.25	1.25	14.25	3.50	9.38	3.50	P	2.938	7.000	462.0	183.9	G
P90-20M-340	90	22.557	22.387	23.406	A-2	23.406	20.56	14.00	13.88	7.25	1.25	14.25	3.50	9.38	3.50	P	2.938	7.000	507.0	245.1	G
P112-20M-340	112	28.071	27.901	-	A-2	-	26.09	14.00	13.88	7.25	1.25	14.25	3.50	9.38	3.50	P	2.938	7.000	870.0	492.1	G
P144-20M-340	144	36.092	35.922	-	A-3	-	34.00	17.00	13.88	9.00	0.13	14.25	2.63	11.38	2.63	W	4.000	8.500	1215.0	982.1	G
P168-20M-340	168	42.107	41.937	-	A-3	-	40.00	17.00	13.88	9.00	0.13	14.25	2.63	11.38	2.63	W	4.000	8.500	1514.0	1829	G
P192-20M-340	192	48.122	47.952	-	D-3	-	46.00	19.00	13.88	12.00	2.38	14.25	1.13	15.25	1.13	S	5.500	10.000	1817.0	2847	G
P216-20M-340	216	54.138	53.968	-	D-3	-	51.88	19.00	13.88	12.00	2.38	14.25	1.13	15.25	1.13	S	5.500	10.000	1717.0	3625	G

Material Spec: S - Steel SS - Sintered Steel G - Grey Iron D - Ductile Iron  
Design Type Suffix: 1 - Solid 2 - Web 3 - Arms

NOTES: • Weights for Minimum Plain Bore (MPB) Sprockets are with minimum bore • Weights and WR<sup>2</sup> for Bushed Sprockets do not include bushings. • WR<sup>2</sup> values have lb-ft<sup>2</sup> units.

Details shown which do not affect drive function may be changed without notification.





**Gates PowerGrip® Timing Belt Pulleys**

**0.200" Pitch, XL**

For 1/4" Wide Belts

Pulley Designation	Number of Grooves	Pitch Diameter (in)	Outside Diameter (in)
11XL025	10	0.637	0.617
11XL025	11	0.700	0.680
12XL025	12	0.764	0.744
13XL025	13	0.828	0.808
14XL025	14	0.891	0.871
15XL025	15	0.955	0.935
16XL025	16	1.019	0.999
18XL025	18	1.146	1.126
20XL025	20	1.273	1.253
21XL025	21	1.337	1.317
22XL025	22	1.401	1.381
24XL025	24	1.528	1.508
26XL025	26	1.655	1.635
28XL025	28	1.783	1.763
30XL025	30	1.910	1.890

**0.200" Pitch, XL**

For 1/4" and 3/8" Wide Belts

Pulley Designation	Number of Grooves	Pitch Diameter (in)	Outside Diameter (in)
10XL037	10	.637	.617
11XL037	11	0.700	0.680
12XL037	12	0.764	0.744
13XL037	13	0.828	0.808
14XL037	14	0.891	0.871
15XL037	15	0.955	0.935
16XL037	16	1.019	0.999
17XL037	17	1.082	1.062
18XL037	18	1.146	1.126
19XL037	19	1.210	1.190
20XL037	20	1.273	1.253
21XL037	21	1.337	1.317
22XL037	22	1.401	1.381
23XL037	23	1.464	1.444
24XL037	24	1.528	1.508
25XL037	25	1.592	1.572
26XL037	26	1.655	1.635
28XL037	28	1.783	1.763
30XL037	30	1.910	1.890
32XL037	32	2.037	2.017
36XL037	36	2.292	2.272
40XL037	40	2.546	2.526
42XL037	42	2.674	2.654
44XL037	44	2.801	2.781
48XL037	48	3.056	3.036
60XL037	60	3.820	3.800
72XL037	72	4.584	4.564

**0.375" Pitch, L**

For 1/2" Wide Belts

Pulley Designation	Number of Grooves	Pitch Diameter (in)	Outside Diameter (in)
10L050	10	1.194	1.164
12L050	12	1.432	1.402
13L050	13	1.552	1.522
14L050	14	1.671	1.641
15L050	15	1.790	1.760
16L050	16	1.910	1.880
17L050	17	2.029	1.999
18L050	18	2.149	2.119
19L050	19	2.268	2.238
20L050	20	2.387	2.357
21L050	21	2.507	2.477
22L050	22	2.626	2.596
24L050	24	2.865	2.835
26L050	26	3.104	3.074
28L050	28	3.342	3.312
30L050	30	3.581	3.551
32L050	32	3.820	3.790
36L050	36	4.297	4.267
40L050	40	4.775	4.745
48L050	48	5.730	5.700
60L050	60	7.162	7.132
72L050	72	8.594	8.564
84L050	84	10.027	9.997

**0.375" Pitch, L**

For 3/4" Wide Belts

Pulley Designation	Number of Grooves	Pitch Diameter (in)	Outside Diameter (in)
10L075	10	1.194	1.164
12L075	12	1.432	1.402
13L075	13	1.552	1.522
14L075	14	1.671	1.641
15L075	15	1.790	1.760
16L075	16	1.910	1.880
17L075	17	2.029	1.999
18L075	18	2.149	2.119
19L075	19	2.268	2.238
20L075	20	2.387	2.357
21L075	21	2.507	2.477
22L075	22	2.626	2.596
24L075	24	2.865	2.835
26L075	26	3.104	3.074
28L075	28	3.342	3.312
30L075	30	3.581	3.551
32L075	32	3.820	3.790
36L075	36	4.297	4.267
40L075	40	4.775	4.745
48L075	48	5.730	5.700
60L075	60	7.162	7.132
72L075	72	8.594	8.564
84L075	84	10.027	9.997

**0.375" Pitch, L**

For 1" Wide Belts

Pulley Designation	Number of Grooves	Pitch Diameter (in)	Outside Diameter (in)
10L100	10	1.194	1.164
12L100	12	1.432	1.402
13L100	13	1.552	1.522
14L100	14	1.671	1.641
15L100	15	1.790	1.760
16L100	16	1.910	1.880
17L100	17	2.029	1.999
18L100	18	2.149	2.119
19L100	19	2.268	2.238
20L100	20	2.387	2.357
21L100	21	2.507	2.477
22L100	22	2.626	2.596
24L100	24	2.865	2.835
26L100	26	3.104	3.074
28L100	28	3.342	3.312
30L100	30	3.581	3.551
32L100	32	3.820	3.790
36L100	36	4.297	4.267
40L100	40	4.775	4.745
48L100	48	5.730	5.700
60L100	60	7.162	7.132
72L100	72	8.594	8.564
84L100	84	10.027	9.997

**0.500" Pitch, H**

For 3/4" and 1" Wide Belts

Pulley Designation	Number of Grooves	Pitch Diameter (in)	Outside Diameter (in)
14H100	14	2.228	2.174
16H100	16	2.546	2.492
18H100	18	2.865	2.811
20H100	20	3.183	3.129
22H100	22	3.501	3.447
24H100	24	3.820	3.766
26H100	26	4.138	4.084
28H100	28	4.456	4.402
30H100	30	4.775	4.721
32H100	32	5.093	5.039
40H100	40	6.366	6.312
48H100	48	7.639	7.585
60H100	60	9.549	9.495
72H100	72	11.459	11.405
84H100	84	13.369	13.315
96H100	96	15.279	15.225
120H100	120	19.099	19.045

**0.500" Pitch, H**

For 1 1/2" Wide Belts

Pulley Designation	Number of Grooves	Pitch Diameter (in)	Outside Diameter (in)
14H150	14	2.228	2.174
16H150	16	2.546	2.492
18H150	18	2.865	2.811
20H150	20	3.183	3.129
22H150	22	3.501	3.447
24H150	24	3.820	3.766
26H150	26	4.138	4.084
28H150	28	4.456	4.402
30H150	30	4.775	4.721
32H150	32	5.093	5.039
40H150	40	6.366	6.312
48H150	48	7.639	7.585
60H150	60	9.549	9.495
72H150	72	11.459	11.405
84H150	84	13.369	13.315
96H150	96	15.279	15.225
120H150	120	19.099	19.045

**0.500" Pitch, H**

For 2" Wide Belts

Pulley Designation	Number of Grooves	Pitch Diameter (in)	Outside Diameter (in)
16H200	16	2.546	2.492
18H200	18	2.865	2.811
20H200	20	3.183	3.129
22H200	22	3.501	3.447
24H200	24	3.820	3.766
26H200	26	4.138	4.084
28H200	28	4.456	4.402
30H200	30	4.775	4.721
32H200	32	5.093	5.039
40H200	40	6.366	6.312
48H200	48	7.639	7.585
60H200	60	9.549	9.495
72H200	72	11.459	11.405
84H200	84	13.369	13.315
96H200	96	15.279	15.225
120H200	120	19.099	19.045

**0.500" Pitch, H**

For 3" Wide Belts

Pulley Designation	Number of Grooves	Pitch Diameter (in)	Outside Diameter (in)
16H300	16	2.546	2.492
18H300	18	2.865	2.811
20H300	20	3.183	3.129
22H300	22	3.501	3.447
24H300	24	3.820	3.766
26H300	26	4.138	4.084
28H300	28	4.456	4.402
30H300	30	4.775	4.721
32H300	32	5.093	5.039
40H300	40	6.366	6.312
48H300	48	7.639	7.585
60H300	60	9.549	9.495
72H300	72	11.459	11.405
84H300	84	13.369	13.315
96H300	96	15.279	15.225
120H300	120	19.099	19.045





## Sprocket Specifications

### Sprocket Tolerance Specifications

PowerGrip® sprockets are made to close tolerances. Modifications such as reboring may result in unsatisfactory drive performance. Strict adherence to the standard tolerances (as shown in table below) is highly recommended.

#### Sprocket Outside Diameter and Pitch

Outside Diameter Range (in)	Outside Diameter Tolerance (in)	Pitch To Pitch Tolerance (in)	
		Adjacent Grooves	Accumulative Over 90 Degrees
Over 2.000 to and including 4.000	+ 0.004 - 0.000	± 0.001	± 0.0045
Over 4.000 to and including 7.000	+ 0.005 - 0.000	± 0.001	± 0.005
Over 7.000 to and including 12.000	+ 0.006 - 0.000	± 0.001	± 0.006
Over 12.000 to and including 20.000	+ 0.007 - 0.000	± 0.001	± 0.0065
Over 20.000	+ 0.008 - 0.000	± 0.001	± 0.0075

#### Sprocket Runout Radial Runout\*

Outside Diameter		Total Eccentricity Total Indicator Reading	
(in)	(mm)	(in)	(mm)
Up to 2	50	0.0025	0.06
Over 2 to 4	50 100	0.003	0.08
Over 4 to 8	100 200	0.004	0.10
Over 8	200	.0005 per inch O.D. over 8"	.013 per mm O.D. over 200mm (may not exceed face diameter tolerance)

#### Axial Runout\*

For outside diameters 1.0 inches and under ..... 0.001 inches

For each additional inch of outside diameter up through

10.0 inches, add ..... 0.001 inches

For each additional inch of outside diameter

over 10.0 inches, add ..... 0.0005 inches

\* Total Indicator Reading; applies to sprocket without bushing.

#### Sprocket and Bushing Keyseat

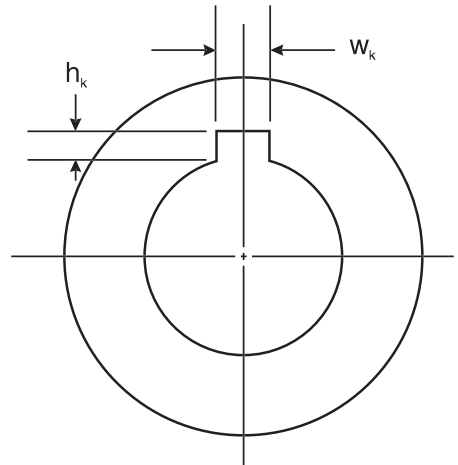
Shaft Diameter (in)	Width, $w_k$ † (in)	Depth, $h_k$ (in) + 0.015 0.000
Up through 7/16 (0.44)	3/32 (0.0938)	3/64 (0.047)
Over 7/16 (0.44) to and incl. 9/16 (0.56)	1/8 (0.125)	1/16 (0.062)
Over 9/16 (0.56) to and incl. 7/8 (0.88)	3/16 (0.1875)	3/32 (0.094)
Over 7/8 (0.88) to and incl. 1 1/4 (1.25)	1/4 (0.250)	1/8 (0.125)
Over 1 1/4 (1.25) to and incl. 1 3/8 (1.38)	5/16 (0.3125)	5/32 (0.156)
Over 1 3/8 (1.38) to and incl. 1 3/4 (1.75)	3/8 (0.375)	3/16 (0.188)
Over 1 3/4 (1.75) to and incl. 2 1/4 (2.25)	1/2 (0.500)	1/4 (0.250)
Over 2 1/4 (2.25) to and incl. 2 3/4 (2.75)	5/8 (0.625)	5/16 (0.312)
Over 2 3/4 (2.75) to and incl. 3 1/4 (3.25)	3/4 (0.750)	3/8 (0.375)
Over 3 1/4 (3.25) to and incl. 3 3/4 (3.75)	7/8 (0.875)	7/16 (0.438)
Over 3 3/4 (3.75) to and incl. 4 1/2 (4.50)	1 (1.000)	1/2 (0.500)
Over 4 1/2 (4.50) to and incl. 5 1/2 (5.50)	1 1/4 (1.250)	5/8 (0.625)

†Tolerance on width,  $w_k$

For width up through 1/2 (0.500) ..... + 0.002, 0.000 inches

For width over 1/2 (0.500) up through 1 (1.000) ..... + 0.003, 0.000 inches

For width over 1 (1.000) ..... + 0.004, 0.000 inches



### Balancing

Stock Sprockets are statically balanced per MPTA (Mechanical Power Transmission Association) Standard Practice for Pulley Balancing SPB-86 using the weight based on the following two criteria:

1. Balance limit (ounces) = Sprocket Weight (lb) x 0.016; or
2. 0.176 ounce (5 grams), whichever is greater.

Caution: Stock sprockets should not be used on drives where rim surface speeds exceed 6,500 fpm. Sprocket construction and materials will determine the dynamic balancing requirements of the sprocket(s) where rim surface speeds exceed 6,500 fpm.

### Sprocket Tooth Profile and Surface Quality

The PowerGrip GT®2 sprocket tooth profile was designed and developed exclusively by The Gates Corporation to operate with the Gates PowerGrip GT3 Belt. See Engineering Section II-3, Tooth Profile, on pages 177-178 for a complete discussion of the performance characteristics of this new tooth profile. The tooth surface should be free of any surface defects and should be 80 microinches finish or better.

### Sprocket Blanks

Sprocket blanks can be grooved by Gates for specially designed, made-to-order sprockets. If those sprockets are supplied in blank form, Gates can perform the "grooving" operation. The blank diameter must be 0.050" larger than the finished sprocket O.D. Contact your local Gates Representative for additional details.





**Recommended Re-bore Specifications and Instructions**

**For Minimum Plain Bore (MPB) Sprockets**

When using MPB PowerGrip® GT®2 sprockets in power transmission systems, important guidelines should be followed for proper product finishing and application. Due to the high load carrying capacity and high operating tensions often found in PowerGrip GT3 belt drive systems, it is imperative to use and adhere to industry standard practices.

When finishing MPB sprockets for high performance belt drive systems, care should be taken to ensure proper functionality and performance. General re-bore instructions and specifications are as follows:

1. Materials used in PowerGrip GT2 sprockets are steel, gray iron, and ductile iron. The materials used may vary with the size of the sprocket. See the Sprocket Specification Tables, pages 131-151 for specific materials.
2. The maximum bore diameter specified by the manufacturer for each sprocket size should NOT be exceeded, or a keyway used which reduces the hub thickness to less than its minimum allowable value. See the Sprocket Specification Tables for a listing of recommended bore ranges by sprocket size. Bores exceeding the maximum recommended value for a particular sprocket size can adversely affect the structural integrity, thereby reducing their load-carrying capability.

The minimum metal thickness between the keyway and hub O.D. should be no less than the set screw diameter specified for the corresponding sprocket size. See Figure 1. A listing of minimum set screw diameters is included below.

- P18-5MGT - 8-32
- P19-5MGT thru P22-5MGT - 10-32
- P23-5MGT thru P32-5MGT - 1/4"
- P34-5MGT thru P38-5MGT - 5/16"
- P40-5MGT thru P50-5MGT - 3/8"
- P28-14MGT thru P29-14MGT - 7/16"
- P36-14MGT thru P38-14MGT - 5/8"

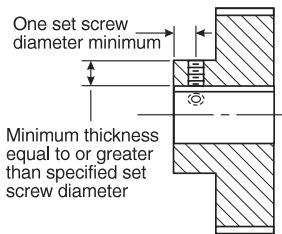


Figure 1 — Minimum Hub Thickness And Set Screw Placement Guidelines

3. The fit between a finished sprocket bore and its mating shaft in a power transmission system must not allow relative movement between the bore and the shaft when the drive is subjected to belt tension and torque loads. This is accomplished, in the case of plain bore sprockets, with the use of set screws and keys and by controlling the fit or clearance between the sprocket bore and its mating shaft. Cyclical, pulsating, or reversing loads may wear the sprocket bore and/or keyway due to the relative movement between the contacting surfaces of the shaft and the bore. The resulting wear may increase the clearance further, if an interference fit is not used.

In order to maximize the performance of high capacity belt drives using plain bore style sprockets, the following for recommendations presented in Table 1 should be followed:

**Class 1 Clearance Fits** should be used when the transmitted load is smooth in nature.

**Interference Fits** should be used for PowerGrip GT3 curvilinear drives *transmitting cyclical, pulsating, or reversing loads.*

**Table 1 - Recommended Shaft / Bore Fits (Inches)**

Nominal Bore Range Over - To (Incl.)	Shaft Tol. (minus)	Clearance Fits		Interference Fits			
		Class 1- Smooth Load		Cyclical, Pulsating, Reversing Load			
		Bore Tol. (Plus)	Fit Tol. (Plus)	Bore Tolerance Range (Minus)		Fit Tolerance Range (Minus)	
0.4375 - 0.5626	0.0005	0.0010	0.0015	0.0005	0.0010	0.0000	0.0010
0.5625 - 0.8750	0.0005	0.0010	0.0015	0.0005	0.0010	0.0000	0.0010
0.8750 - 1.2500	0.0005	0.0010	0.0015	0.0005	0.0010	0.0000	0.0010
1.2500 - 1.3750	0.0005	0.0010	0.0015	0.0005	0.0010	0.0000	0.0010
1.3750 - 1.500	0.0005	0.0010	0.0015	0.0005	0.0010	0.0000	0.0010
1.5000 - 1.7500	0.0010	0.0010	0.0020	0.0010	0.0020	0.0000	0.0020
1.7500 - 2.0000	0.0010	0.0010	0.0020	0.0010	0.0020	0.0000	0.0020
2.0000 - 2.2500	0.0010	0.0015	0.0025	0.0010	0.0020	0.0000	0.0020
2.2500 - 2.7500	0.0010	0.0015	0.0025	0.0010	0.0020	0.0000	0.0020
2.7500 - 3.0000	0.0010	0.0015	0.0025	0.0010	0.0020	0.0000	0.0020
3.0000 - 3.2500	0.0010	0.0015	0.0025	0.0015	0.0030	0.0005	0.0030
3.2500 - 3.7500	0.0010	0.0015	0.0025	0.0015	0.0030	0.0005	0.0030
3.7500 - 4.0000	0.0010	0.0015	0.0025	0.0015	0.0030	0.0005	0.0030
4.0000 - 4.5000	0.0010	0.0015	0.0025	0.0020	0.0035	0.0010	0.0035
4.5000 - 5.0000	0.0010	0.0015	0.0025	0.0020	0.0035	0.0010	0.0035
5.0000 - 5.5000	0.0010	0.0015	0.0025	0.0025	0.0040	0.0015	0.0040
5.5000 - 6.5000	0.0010	0.0015	0.0025	0.0025	0.0040	0.0015	0.0040

Table 1 was extracted in part from AGMA Standard for Bores and Keyways for Flexible Couplings (Inch Series) AGMA 9002-A86 Table.

4. DO NOT chuck or center the sprocket on guide flanges. Soft jaws should be used when chucking on the sprocket teeth. Center (indicate) the sprocket using the sprocket tooth O.D.

If chucked on the Rim I.D. or Hub O.D., the sprocket should be centered with respect to the sprocket tooth O.D. Guide flanges are permanently mounted and should not be removed. If original flanges must be removed, they should be replaced with NEW flanges. New guide flanges should be attached securely with care using mechanical fasteners such as screws. **Note: Improper guide flange reassembly may cause serious personal injury and/or mechanical damage.**

5. Set screw holes in the sprocket hub must be placed properly for maximum holding strength. For both standard and shallow keyseats, two (2) set screws should be used as illustrated in Figure 2. The total holding strength of the set screws is dependent upon their placement and design. Generally, one screw should be placed directly over the keyway, and the other screw at ninety degrees (90°) from the keyway, or at sixty-five degrees (65°) from the keyway—a more recent practice that improves holding power. Sometimes four set screws (or two pair) are used for increased holding strength.



**Recommended Re-bore Specifications and Instructions**

**For Minimum Plain Bore (MPB) Sprockets**

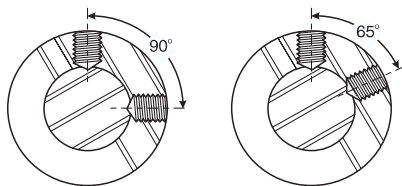


Figure 2 — Set Screw Angles

Each set screw should be placed axially—a minimum of one set screw diameter from the end of the sprocket hub extension. See Figure 1. For recommended set screw tightening torque values see Table 2 below.

**Table 2 - Recommended Tightening Torque Values For Set Screws**

Set Screw Size	Hex Key Size (in)	Approximate Installation Torque Values (lb-in)
8-32	5/64	20
10-32	3/32	35
1/4	1/8	80
5/16	5/32	160
3/8	3/16	275
7/16	7/32	430
1/2	1/4	615
5/8	5/16	1315

- After reboring, the sprocket may require rebalancing. Vibration, noise, reduced bearing life, and undue stresses on the mechanical components in the system could result if improper rebalancing practices are used. See Sprocket Specifications, page 153, for recommended sprocket balancing specifications.
- Standard square or rectangular keys should be used. See page 158 for standard key dimensions.

Refer to Sprocket Specifications, page 153, for specifications and tolerances for sprocket eccentricity, parallelism, and balancing.