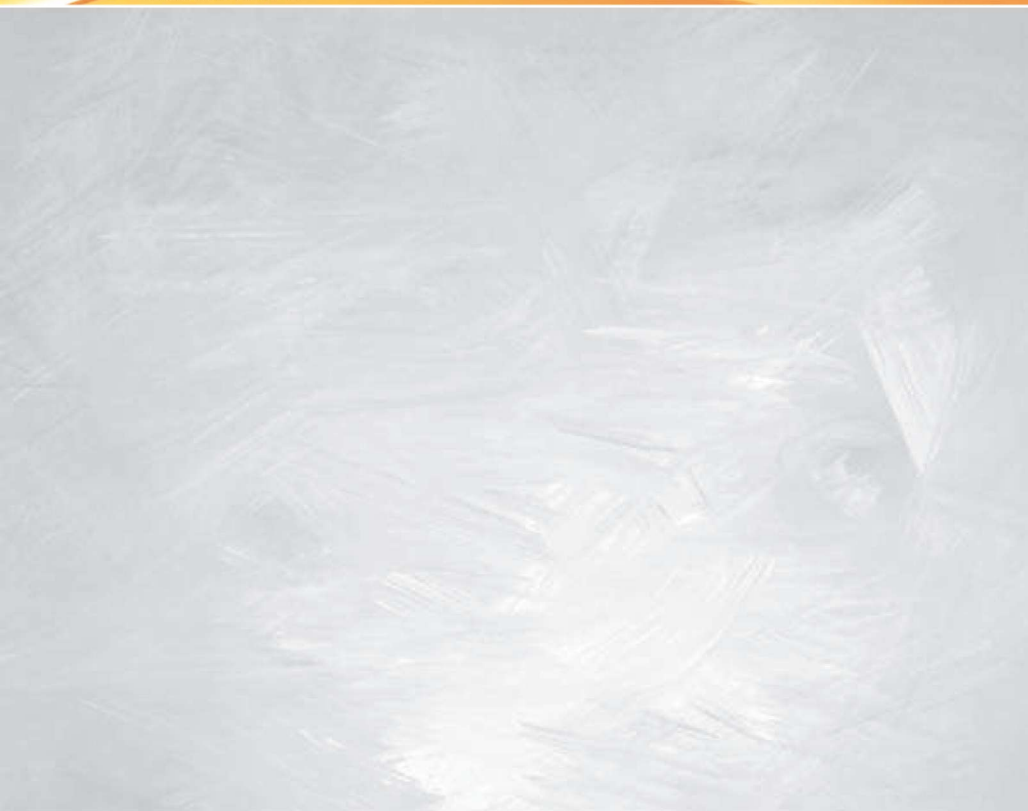




RODAVIGO, S.A.
RODAMIENTOS VIGO, S.A.

www.rodavigo.net

+34 986 288118
Servicio de Att. al Cliente



Series

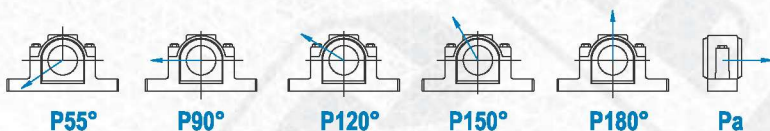
SNH 200 - 300





EN ISO 9001 : 2000

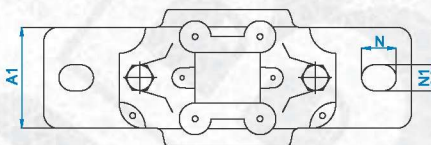
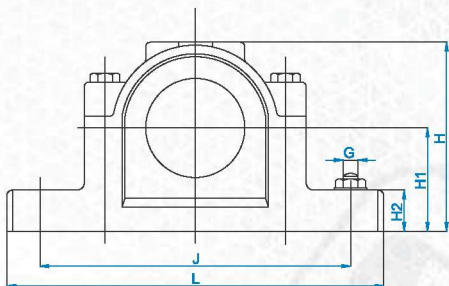
series
SNH 200-300



Housing		Breaking loads					
Size	P _{0°}	P _{55°}	P _{90°}	P _{120°}	P _{150°}	P _{180°}	P _a
-	kN	kN	kN	kN	kN	kN	kN
SNH 205	100	155	95	70	60	80	52
SNH 206-305	130	170	100	80	65	85	55
SNH 207-306	140	190	115	85	80	95	60
SNH 208-307	150	215	130	95	85	110	70
SNH 209	160	230	140	100	90	115	75
SNH 210-308	170	265	155	120	110	130	85
SNH 211-309	210	275	170	125	115	140	90
SNH 212-310	210	300	180	130	120	150	100
SNH 213-311	270	340	205	150	130	170	110
SNH 215-312	290	410	250	185	160	205	135
SNH 216-313	350	430	260	190	175	215	140
SNH 217	370	480	290	205	190	240	155
SNH 218-315	430	550	340	250	215	275	180
SNH 219-316	450	580	350	260	230	290	190
SNH 220-317	470	620	370	280	250	310	200
SNH 222-319	600	680	410	310	275	340	220
SNH 224-320	800	790	470	350	320	400	260
SNH 226	900	900	540	410	360	450	295
SNH 228	1000	1050	630	470	430	530	345
SNH 230	1100	1200	730	540	480	600	390
SNH 232	1300	1450	860	640	570	720	470



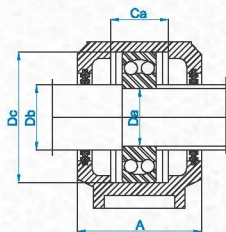
series
SNH 200-300



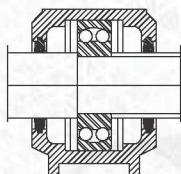
SHAFT DIAMETER		HOUSING NO	HOUSING WITHOUT SEALS	HOUSING WITH DOUBLE-LIP SEAL	HOUSING WITH FELT SEALS	HOUSING WITH V-RING SEALS	HOUSING WITH LABYRINTH SEALS	BEARING NO
Da	Db							
25	30	SNH 205	SNH 505	SNH 205 TG	SNH 205 TC	---	SNH 205 TS	1205 2205 22205
		SNH 305	SNH 506-605	SNH 305 TG	---	---	SNH 305 TS	1305 2305 21305
30	35	SNH 206	SNH 506-605	SNH 206 TG	SNH 206 TC	---	SNH 206 TS	1206 2206 22206
		SNH 306	SNH 507-606	SNH 306 TG	---	---	SNH 306 TS	1306 2306 21306
35	45	SNH 207	SNH 507-606	SNH 207 TG	SNH 207 TC	---	SNH 207 TS	1207 2207 22207
		SNH 307	SNH 508-607	SNH 307 TG	---	---	SNH 307 TS	1307 2307 21307
40	50	SNH 208	SNH 508-607	SNH 208 TG	SNH 208 TC	---	SNH 208 TS	1208 2208 22208
		SNH 308	SNH 510-608	SNH 308 TG	---	SNH 308 TA	SNH 308 TS	1308 2308 21308 22308
45	55	SNH 209	SNH 509	SNH 209 TG	SNH 209 TC	SNH 209 TA	SNH 209 TS	1209 2209 22209
		SNH 309	SNH 511-609	SNH 309 TG	---	SNH 309 TA	SNH 309 TS	1309 2309 21309 22309



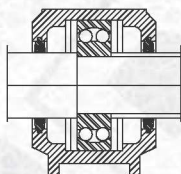
series
SNH 200-300



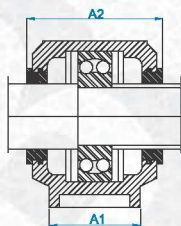
Housing with double-lip seals type TG



Housing with felt seals type TC



Housing with V-Ring seals type TA

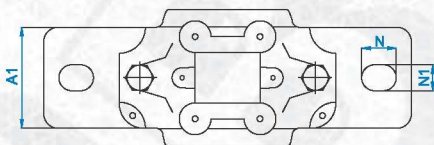
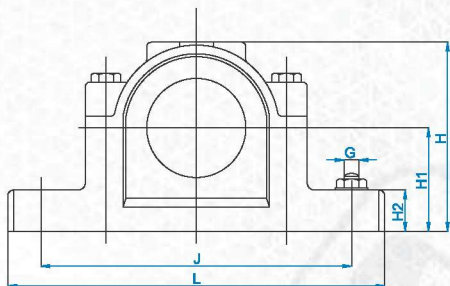


Housing with labyrinth seals type TS

DIMENSIONS													LOCATING RING	END COVER	
A	A1	A2	Ca	Dc	H	H1	H2	J	L	N	N1	G			Kg
67	46	90	25	52	74	40	19	130	165	20	15	12	1,4	2 FRB 5/52	ASNH 205
														2 FRB 3,5/52	
														2 FRB 3,5/52	
77	52	89	32	62	89	50	22	150	185	20	15	12	1,9	2 FRB 7,5/62	ASNH 206
														2 FRB 4/62	
														2 FRB 7,5/62	
77	52	89	32	62	89	50	22	150	185	20	15	12	1,9	2 FRB 8/62	ASNH 206
														2 FRB 6/62	
														2 FRB 6/62	
82	52	94	34	72	93	50	22	150	185	20	15	12	2,2	2 FRB 7,5/72	ASNH 507-606
														2 FRB 3,5/72	
														2 FRB 7,5/72	
82	52	94	34	72	93	50	22	150	185	20	15	12	2,1	2 FRB 8,5/72	ASNH 207
														2 FRB 5,5/72	
														2 FRB 5,5/72	
85	60	97	39	80	107	60	25	170	205	20	15	12	2,9	2 FRB 9/80	ASNH 307
														2 FRB 4/80	
														2 FRB 9/80	
85	60	97	39	80	107	60	25	170	205	20	15	12	2,75	2 FRB 10,5/80	ASNH 208
														2 FRB 8/80	
														2 FRB 8/80	
90	60	102	41	90	113	60	25	170	205	20	15	12	3,2	2 FRB 9/90	ASNH 510-608
														2 FRB 4/90	
														2 FRB 9/90	
85	60	97	30	85	109	60	25	170	205	20	15	12	2,75	2 FRB 4/90	ASNH 209
														2 FRB 5,5/85	
														2 FRB 3,5/85	
95	70	107	44	100	127	70	28	210	255	24	18	16	4,4	2 FRB 9,5/100	ASNH 511-609
														2 FRB 4/100	
														2 FRB 9,5/100	



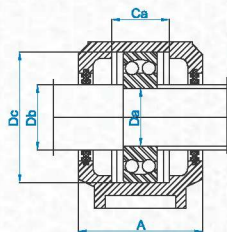
series
SNH 200-300



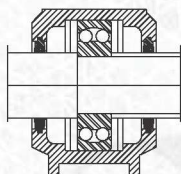
SHAFT DIAMETER		HOUSING NO	HOUSING WITHOUT SEALS	HOUSING WITH DOUBLE-LIP SEAL	HOUSING WITH FELT SEALS	HOUSING WITH V-RING SEALS	HOUSING WITH LABYRINTH SEALS	BEARING NO
Da	Db							
50	60	SNH 210	SNH 510-608	SNH 210 TG	SNH 210 TC	SNH 210 TA	SNH 210 TS	1210
								2210
		22210						
		1310						
		2310						
21310								
22310								
55	65	SNH 211	SNH 511-609	SNH 211 TG	SNH 211 TC	SNH 211 TA	SNH 211 TS	1211
								2211
		22211						
		1311						
		2311						
21311								
22311								
60	70	SNH 212	SNH 512-610	SNH 212 TG	SNH 212 TC	SNH 212 TA	SNH 212 TS	1212
								2212
		22212						
		1312						
		2312						
21312								
22312								
65	75	SNH 213	SNH 513-611	SNH 213 TG	SNH 213 TC	SNH 213 TA	SNH 213 TS	1213
								2213
		22213						
		1313						
		2313						
21313								
22313								
65	75	SNH 313	SNH 516-613	SNH 313 TG	---	SNH 313 TA	SNH 313 TS	1213
								2213
		22213						
		1313						
		2313						
21313								
22313								



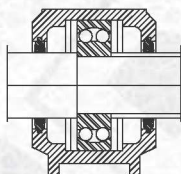
series
SNH 200-300



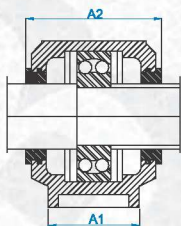
Housing with double-lip seals type TG



Housing with felt seals type TC



Housing with V-Ring seals type TA



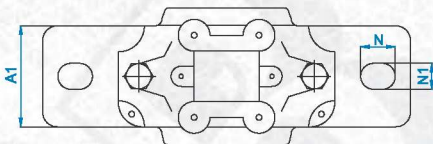
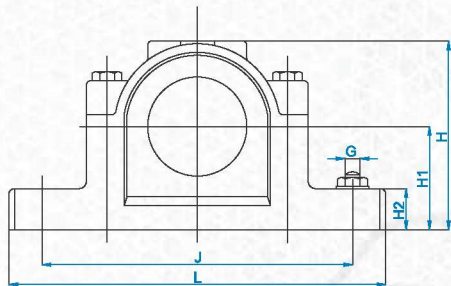
Housing with labyrinth seals type TS

D I M E N S I O N S

D I M E N S I O N S														LOCATING RING	END COVER
A	A1	A2	Ca	Dc	H	H1	H2	J	L	N	N1	G	Kg		
90	60	102	41	90	113	60	25	170	205	20	15	12	3	2 FRB 10,5/90	ASNH 210
														2 FRB 9/90	
														2 FRB 9/90	
105	70	117	48	110	133	70	30	210	255	24	18	16	5,1	2 FRB 10,5/110	ASNH 512-610
														2 FRB 4/110	
														2 FRB 10,5/110	
														2 FRB 4/110	
95	70	107	44	100	127	70	28	210	255	24	18	12	4,2	2 FRB 11,5/100	ASNH 211
														2 FRB 9,5/100	
														2 FRB 9,5/100	
110	80	122	51	120	148	80	30	230	275	24	18	12	6,5	2 FRB 11/120	ASNH 513-611
														2 FRB 4/120	
														2 FRB 11/120	
														2 FRB 4/120	
105	70	117	48	110	133	70	30	210	255	24	18	16	4,75	2 FRB 13/110	ASNH 212
														2 FRB 10/110	
														2 FRB 10/110	
														2 FRB 12,5/130	
115	80	127	56	130	154	80	30	230	280	24	18	16	7	2 FRB 5/130	ASNH 515-612
														2 FRB 12,5/130	
														2 FRB 5/130	
														2 FRB 5/130	
110	80	128	51	120	148	80	30	230	275	24	18	12	6,1	2 FRB 14/120	ASNH 213
														2 FRB 10/120	
														2 FRB 10/120	
														2 FRB 12,5/140	
120	90	138	58	140	175	95	32	260	315	28	22	20	9,5	2 FRB 5/140	ASNH 516-611
														2 FRB 12,5/140	
														2 FRB 5/140	
														2 FRB 5/140	



series
SNH 200-300

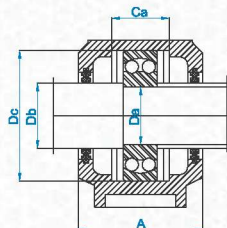


SHAFT DIAMETER		HOUSING NO	HOUSING WITHOUT SEALS	HOUSING WITH DOUBLE-LIP SEAL	HOUSING WITH FELT SEALS	HOUSING WITH V-RING SEALS	HOUSING WITH LABYRINTH SEALS	BEARING NO
Da	Db							
70	80	SNH 314	SNH 517	SNH 314 TG	-	SNH 314 TA	SNH 314 TS	1314
								2314
								21314
								22314
75	85	SNH 215	SNH 515-612	SNH 215 TG	SNH 215 TC	SNH 215 TA	SNH 215 TS	1215
								2215
								22215
								22215
		SNH 315	SNH 518-615	SNH 315 TG	-	SNH 315 TA	SNH 315 TS	1315
								2315
								21315
								22315
80	90	SNH 216	SNH 516-613	SNH 216 TG	SNH 216 TC	SNH 216 TA	SNH 216 TS	1216
								2216
								22216
		SNH 316	SNH 519-616	SNH 316 TG	-	SNH 316 TA	SNH 316 TS	1316
								2316
								21316
85	95	SNH 217	SNH 517	SNH 217 TG	SNH 217 TC	SNH 217 TA	SNH 217 TS	1217
								2217
								22217
								22217
		SNH 317	SNH 520-617	SNH 317 TG	-	SNH 317 TA	SNH 317 TS	1317
								2317
								21317
								22317
90	100	SNH 218	SNH 518-615	SNH 218 TG	SNH 218 TC	SNH 218 TA	SNH 218 TS	1218
								2218
								22218
		SNH 318	SNH 618	SNH 318 TG	-	SNH 318 TA	SNH 318 TS	1318
								2318
								21318
								22318

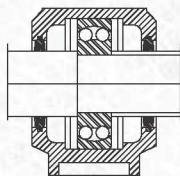


EN ISO 9001 : 2000

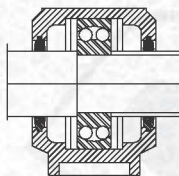
series
SNH 200-300



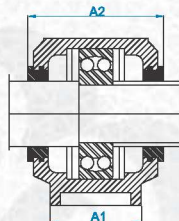
Housing with double-lip seals type TG



Housing with felt seals type TC



Housing with V-Ring seals type TA

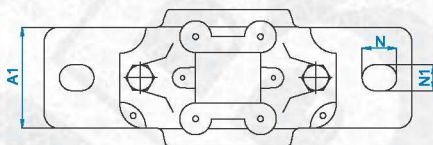
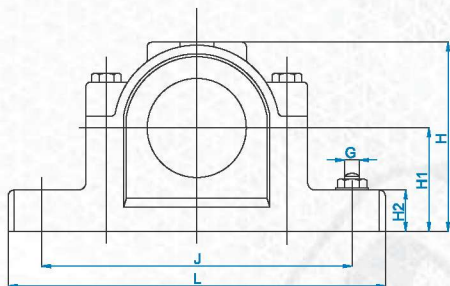


Housing with labyrinth seals type TS

DIMENSIONS														LOCATING RING	END COVER
A	A1	A2	Ca	Dc	H	H1	H2	J	L	N	N1	G	Kg		
125	90	143	61	150	183	95	32	260	320	28	22	20	10	2 FRB 13/150	ASNH 517
														2 FRB 5/150	
														2 FRB 13/150	
														2 FRB 5/150	
115	80	133	56	130	154	80	30	230	280	24	18	16	7	2 FRB 15,5/130	ASNH 215
														2 FRB 12,5/130	
														2 FRB 12,5/130	
														2 FRB 14/160	
140	100	158	65	160	193	100	35	290	345	28	22	20	12,5	2 FRB 5/160	ASNH 518-615
														2 FRB 14/160	
														2 FRB 5/160	
														2 FRB 16/140	
120	90	138	58	140	175	95	32	260	315	28	22	20	9,5	2 FRB 12,5/140	ASNH 216
														2 FRB 12,5/140	
														2 FRB 14,5/170	
														2 FRB 5/170	
145	100	163	68	170	210	112	35	290	345	28	22	20	13,7	2 FRB 14,5/170	ASNH 519-616
														2 FRB 5/170	
														2 FRB 5/170	
														2 FRB 16,5/150	
125	90	143	61	150	183	95	32	260	320	28	22	20	10	2 FRB 12,5/150	ASNH 217
														2 FRB 12,5/150	
														2 FRB 14,5/180	
														2 FRB 5/180	
160	110	178	70	180	215	112	40	320	380	32	26	24	17,6	2 FRB 14,5/180	ASNH 520-617
														2 FRB 5/180	
														2 FRB 5/180	
														2 FRB 17,5/160	
140	100	158	65	160	193	100	35	290	345	28	22	20	12,5	2 FRB 12,5/160	ASNH 218
														2 FRB 12,5/160	
														2 FRB 6,25/160	
														2 FRB 15/190	
155	110	173	95	190	229	112	40	320	380	32	26	24	22	2 FRB 5/190	ASNH 618
														2 FRB 5/190	
														2 FRB 15/190	



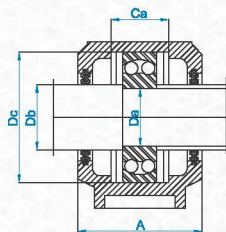
series
SNH 200-300



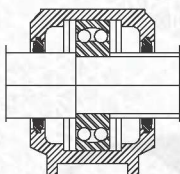
SHAFT DIAMETER		HOUSING NO	HOUSING WITHOUT SEALS	HOUSING WITH DOUBLE-LIP SEAL	HOUSING WITH FELT SEALS	HOUSING WITH V-RING SEALS	HOUSING WITH LABYRINTH SEALS	BEARING NO
Da	Db							
95	110	SNH 219	SNH 519-616	SNH 219 TG	-	SNH 219 TA	SNH 219 TS	1219
								2219
								22219
		SNH 319	SNH 522-619	SNH 319 TG	-	SNH 319 TA	SNH 319 TS	1319
								2319
								21319
100	115	SNH 220	SNH 520-617	SNH 220 TG	-	SNH 220 TA	SNH 220 TS	2220
								22220
								23220
								1320
								2320
								21320
		SNH 320	SNH 524-620	SNH 320 TG	-	SNH 320 TA	SNH 320 TS	22320
								1222
								2222
								22222
								23222
								1224
110	125	SNH 222	SNH 522-619	SNH 222 TG	-	SNH 222 TA	SNH 222 TS	22224
								22224
								23224
								1226
120	135	SNH 224	SNH 524-620	SNH 224 TG	-	SNH 224 TA	SNH 224 TS	22226
								22226
								23226
130	145	SNH 226	SNH 526	SNH 226 TG	-	SNH 226 TA	SNH 226 TS	22228
								22228
								23228
140	155	SNH 228	SNH 528	SNH 228 TG	-	SNH 228 TA	SNH 228 TS	22230
								22230
150	165	SNH 230	SNH 530	SNH 230 TG	-	SNH 230 TA	SNH 230 TS	22232
								22232
160	175	SNH 232	SNH 532	SNH 232 TG	-	SNH 232 TA	SNH 232 TS	22233
								22233



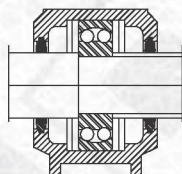
series
SNH 200-300



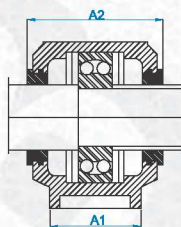
Housing with double-lip seals type TG



Housing with felt seals type TC



Housing with V-Ring seals type TA



Housing with labyrinth seals type TS

DIMENSIONS														LOCATING RING	END COVER
A	A1	A2	Ca	Dc	H	H1	H2	J	L	N	N1	G	Kg		
145	100	163	68	170	210	112	35	290	345	28	22	20	13,7	2 FRB 18/70	ASNH 519-616
														2 FRB 12,5/170	
														2 FRB 12,5/170	
175	120	191	80	200	239	125	45	350	410	32	26	24	22	2 FRB 17,5/200	ASNH 522-619
														2 FRB 6,5/200	
														2 FRB 17,5/200	
160	110	178	70	180	215	112	40	320	380	32	26	24	17,6	2 FRB 18/180	ASNH 520-617
														2 FRB 12/180	
														2 FRB 4,85/180	
185	120	199	86	215	271	140	45	350	410	32	26	24	26,2	2 FRB 19,5/215	ASNH 524-620
														2 FRB 6,5/215	
														2 FRB 19,5/215	
175	120	191	80	200	239	125	45	350	410	32	26	24	22	2 FRB 21/200	ASNH 522-619
														2 FRB 13,5/200	
														2 FRB 13,5/200	
185	120	199	86	215	271	140	45	350	410	32	26	24	26,2	2 FRB 5,1/200	ASNH 524-620
														2 FRB 22/215	
														2 FRB 14/215	
190	130	208	90	230	290	150	50	380	445	35	28	24	33	2 FRB 5/215	ASNH 526
														2 FRB 22/230	
														2 FRB 13/230	
205	150	233	98	250	302	150	50	420	500	42	35	30	40	2 FRB 5/230	ASNH 520
														2 FRB 15/250	
														2 FRB 5/250	
220	160	241	106	270	323	160	60	450	530	42	35	30	49	2 FRB 16,5/270	ASNH 530
														2 FRB 5/270	
														2 FRB 5/270	
235	160	254	114	290	344	170	60	470	550	42	35	30	55	2 FRB 17/290	ASNH 532
														2 FRB 5/290	
														2 FRB 5/290	