



**RODAVIGO, S.A.**  
RODAMIENTOS VIGO, S.A.

[www.rodavigo.net](http://www.rodavigo.net)

**+34 986 288118**  
Servicio de Att. al Cliente



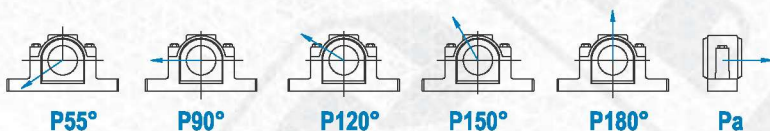
# *Series*

## **SNH 500 - 600**





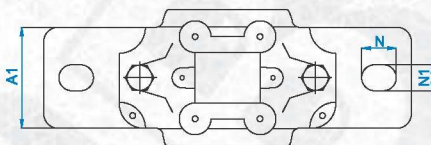
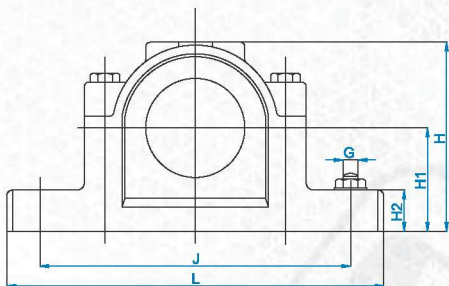
series  
**SNH 500-600**



Housing		Breaking loads					
Size	P <sub>0°</sub>	P <sub>55°</sub>	P <sub>90°</sub>	P <sub>120°</sub>	P <sub>150°</sub>	P <sub>180°</sub>	P <sub>a</sub>
-	kN	kN	kN	kN	kN	kN	kN
SNH 505	100	155	95	70	60	80	52
SNH 506-605	130	170	100	80	65	85	55
SNH 507-606	140	190	115	85	80	95	60
SNH 508-607	150	215	130	95	85	110	70
SNH 509	160	230	140	100	90	115	75
SNH 510-608	170	265	155	120	110	130	85
SNH 511-609	190	275	170	125	115	140	90
SNH 512-610	210	300	180	130	120	150	100
SNH 513-611	270	340	205	150	130	170	110
SNH 515-612	290	410	250	185	160	205	135
SNH 516-613	350	430	260	190	175	215	140
SNH 517	370	480	290	205	190	240	155
SNH 518-615	430	550	340	250	215	275	180
SNH 519-616	450	580	350	260	230	290	190
SNH 520-617	470	620	370	280	250	310	200
SNH 522-619	600	680	410	310	275	340	220
SNH 524-620	800	790	470	350	320	400	260
SNH 526	900	900	540	410	360	450	295
SNH 528	1000	1 050	630	470	430	530	345
SNH 530	1100	1 200	730	540	480	600	390
SNH 532	1300	1 450	860	640	570	720	470



series  
**SNH 500-600**

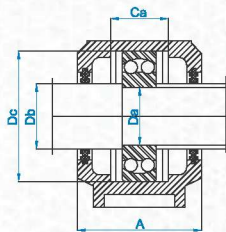


SHAFT DIAMETER Da	HOUSING NO	HOUSING WITHOUT SEALS	HOUSING WITH DOUBLE-LIP SEAL	HOUSING WITH FELT SEALS	HOUSING WITH V-RING SEALS	HOUSING WITH LABYRINTH SEALS	BEARING NO	ADAPTER NO
20	SNH 505	SNH 505	SNH 505 TG	SNH 505 TC	SNH 505 TA	SNH 505 TS	1205 K	H 205
							2205 K	H 305
							22205 K	H 305
25	SNH 605	SNH 506-605	SNH 605 TG	SNH 605 TC	SNH 605 TA	SNH 605 TS	1305 K	H 305
							2305 K	H 2305
							1206 K	H 206
25	SNH 506	SNH 506-605	SNH 506 TG	SNH 506 TC	SNH 506 TA	SNH 506 TS	2206 K	H 306
							1206 K	H 206
							22206 K	H 306
30	SNH 606	SNH 507-606	SNH 606 TG	SNH 606 TC	SNH 606 TA	SNH 606 TS	1306 K	H 306
							2306 K	H 2306
							1207 K	H 207
30	SNH 507	SNH 507-606	SNH 507 TG	SNH 507 TC	SNH 507 TA	SNH 507 TS	2207 K	H 307
							22207 K	H 307
							1307 K	H 307
35	SNH 607	SNH 508-607	SNH 607 TG	SNH 607 TC	SNH 607 TA	SNH 607 TS	2307 K	H 2307
							1208 K	H 208
							2208 K	H 308
35	SNH 508	SNH 508-607	SNH 508 TG	SNH 508 TC	SNH 508 TA	SNH 508 TS	22208 K	H 308
							1308 K	H 308
							2308 K	H 2308
40	SNH 608	SNH 510-608	SNH 608 TG	SNH 608 TC	SNH 608 TA	SNH 608 TS	21308 K	H 308
							22308 K	H 2308
							1209 K	H 209
40	SNH 509	SNH 509	SNH 509 TG	SNH 509 TC	SNH 509 TA	SNH 509 TS	2209 K	H 309
							22209 K	H 309
							1309 K	H 309
40	SNH 609	SNH 511-609	SNH 609 TG	SNH 609 TC	SNH 609 TA	SNH 609 TS	2309 K	H 2309
							21309 K	H 309
							22309 K	H 2309

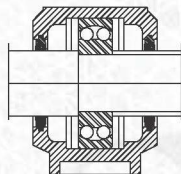


EN ISO 9001 : 2000

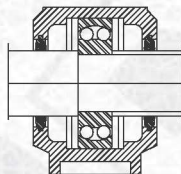
series  
**SNH 500-600**



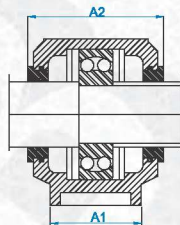
Housing with double-lip seals type TG



Housing with felt seals type TC



Housing with V-Ring seals type TA

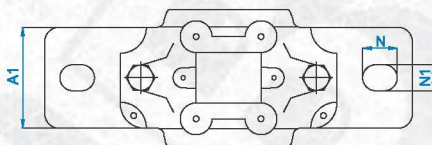
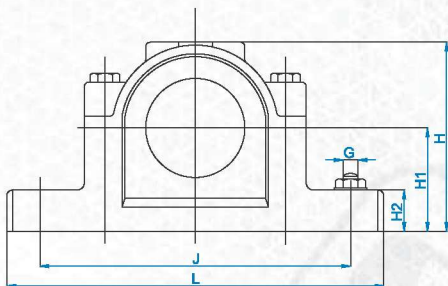


Housing with labyrinth seals type TS

DIMENSIONS													LOCATING RING	END COVER	
A	A1	A2	Ca	Dc	H	H1	H2	J	L	N	N1	G			Kg
67	46	80	25	52	74	40	19	130	165	20	15	12	1,5	2 FRB 5/52	ASNH 505
														2 FRB 3,5/52	
														2 FRB 3,5/52	
77	52	89	32	62	89	50	22	150	185	20	15	12	2	2 FRB 7,5/62	ASNH 506-605
														2 FRB 4/62	
														2 FRB 8/62	
77	52	89	32	62	89	50	22	150	185	20	15	12	2	2 FRB 6/62	ASNH 506-605
														2 FRB 6/62	
														2 FRB 6/62	
82	52	94	34	72	93	50	22	150	185	20	15	12	2,2	2 FRB 7,5/72	ASNH 507-605
														2 FRB 3,5/72	
														2 FRB 8,5/72	
82	52	94	34	72	93	50	22	150	185	20	15	12	2,2	2 FRB 5,5/72	ASNH 507-606
														2 FRB 5,5/72	
														2 FRB 5,5/72	
85	60	97	39	80	107	60	25	170	205	20	15	12	2,9	2 FRB 9/80	ASNH 508-607
														2 FRB 4/80	
														2 FRB 10,5/80	
85	60	97	39	80	107	60	25	170	205	20	15	12	2,9	2 FRB 8/80	ASNH 508-607
														2 FRB 8/80	
														2 FRB 9/90	
90	60	102	41	90	113	60	25	170	205	20	15	12	3,2	2 FRB 4/90	ASNH 510-608
														2 FRB 9/90	
														2 FRB 4/90	
85	60	97	30	85	109	60	25	170	205	20	15	12	2,9	2 FRB 5,5/85	ASNH 509
														2 FRB 3,5/85	
														2 FRB 3,5/85	
95	70	107	44	100	127	70	28	210	255	24	18	16	4,4	2 FRB 9,5/100	ASNH 511-609
														2 FRB 4/100	
														2 FRB 9,5/100	



series  
**SNH 500-600**

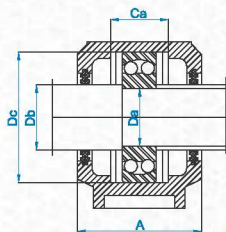


SHAFT DIAMETER Da	HOUSING NO	HOUSING WITHOUT SEALS	HOUSING WITH DOUBLE-LIP SEAL	HOUSING WITH FELT SEALS	HOUSING WITH V-RING SEALS	HOUSING WITH LABYRINTH SEALS	BEARING NO	ADAPTER NO
45	SNH 510	SNH 510	SNH 510 TG	SNH 510 TC	SNH 510 TA	SNH 510 TS	1210 K	H 210
							2210 K	H 310
							22210 K	H 310
	SNH 610	SNH 512-610	SNH 610 TG	SNH 610 TC	SNH 610 TA	SNH 610 TS	1310 K	H 310
							2310 K	H 2310
							21310 K	H 310
							22310 K	H 2310
50	SNH 511	SNH 511-609	SNH 511 TG	SNH 511 TC	SNH 511 TA	SNH 511 TS	1211 K	H 211
							2211 K	H 311
							22211 K	H 311
	SNH 611	SNH 513-611	SNH 611 TG	SNH 611 TC	SNH 611 TA	SNH 611 TS	1311 K	H 311
							2311 K	H 2311
							21311 K	H 311
							22311 K	H 2311
55	SNH 512	SNH 512-610	SNH 512 TG	SNH 512 TC	SNH 512 TA	SNH 512 TS	1212 K	H 212
							2212 K	H 312
							22212 K	H 312
	SNH 612	SNH 515-612	SNH 612 TG	SNH 612 TC	SNH 612 TA	SNH 612 TS	1312 K	H 312
							2312 K	H 2312
							21312 K	H 312
							22312 K	H 2312
60	SNH 513	SNH 513-611	SNH 513 TG	SNH 513 TC	SNH 513 TA	SNH 513 TS	1213 K	H 213
							2213 K	H 313
							22213 K	H 313
	SNH 613	SNH 516-613	SNH 613 TG	SNH 613 TC	SNH 613 TA	SNH 613 TS	1313 K	H 313
							2313 K	H 2313
							21313 K	H 313
							22313 K	H 2313

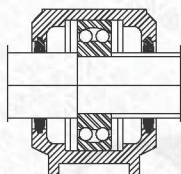


EN ISO 9001 : 2000

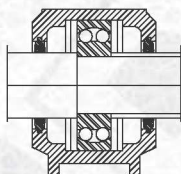
series  
**SNH 500-600**



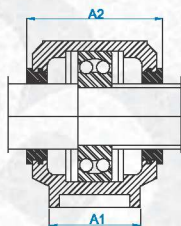
Housing with double-lip seals type TG



Housing with felt seals type TC



Housing with V-Ring seals type TA

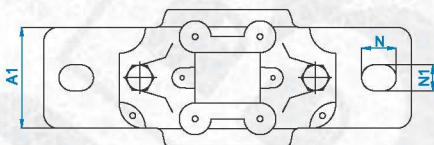
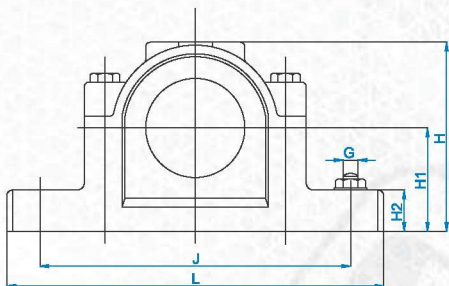


Housing with labyrinth seals type TS

DIMENSIONS														LOCATING RING	END COVER
A	A1	A2	Ca	Dc	H	H1	H2	J	L	N	N1	G	Kg		
90	60	102	41	90	113	60	25	170	205	20	15	12	3,2	2 FRB 10,5/90	ASNH 510-608
														2 FRB 9/90	
														2 FRB 9/90	
105	70	117	48	110	133	70	30	210	255	24	18	16	5,1	2 FRB 10,5/110	ASNH 512-610
														2 FRB 4/110	
														2 FRB 10,5/110	
95	70	107	44	100	127	70	28	210	255	24	18	12	4,4	2 FRB 4/110	ASNH 511-609
														2 FRB 9,5/100	
														2 FRB 9,5/100	
110	80	122	51	120	148	80	30	230	275	24	18	12	6,5	2 FRB 11/120	ASNH 513-611
														2 FRB 4/120	
														2 FRB 11/120	
105	70	117	48	110	133	70	30	210	255	24	18	16	5,1	2 FRB 4/120	ASNH 512-610
														2 FRB 10/110	
														2 FRB 10/110	
115	80	127	56	130	154	80	30	230	280	24	18	16	7	2 FRB 12,5/130	ASNH 515-612
														2 FRB 5/130	
														2 FRB 12,5/130	
110	80	122	51	120	148	80	30	230	275	24	18	16	6,5	2 FRB 5/130	ASNH 513-611
														2 FRB 14/120	
														2 FRB 10/120	
120	90	138	58	140	175	95	32	260	315	28	22	20	9,5	2 FRB 10/120	ASNH 516-613
														2 FRB 12,5/140	
														2 FRB 5/140	



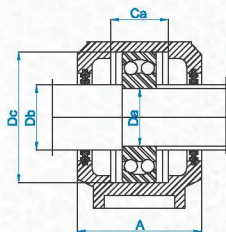
series  
**SNH 500-600**



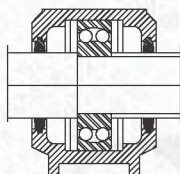
SHAFT DIAMETER Da	HOUSING NO	HOUSING WITHOUT SEALS	HOUSING WITH DOUBLE-LIP SEAL	HOUSING WITH FELT SEALS	HOUSING WITH V-RING SEALS	HOUSING WITH LABYRINTH SEALS	BEARING NO	ADAPTER NO
65	SNH 515	SNH 515-612	SNH 515 TG	SNH 515 TC	SNH 515 TA	SNH 515 TS	1215 K	H 215
							2215 K	H 315
							22215 K	H 315
	SNH 615	SNH 518-615	SNH 615 TG	SNH 615 TC	SNH 615 TA	SNH 615 TS	1315 K	H 315
							2315 K	H 2315
							21315 K	H 315
70	SNH 516	SNH 516-612	SNH 516 TG	SNH 516 TC	SNH 516 TA	SNH 516 TS	22315 K	H 2315
							1216 K	H 216
							2216 K	H 316
	SNH 616	SNH 519-616	SNH 616 TG	SNH 616 TC	SNH 616 TA	SNH 616 TS	22216 K	H 316
							1316 K	H 316
							2316 K	H 2316
75	SNH 517	SNH 517	SNH 517 TG	SNH 517 TC	SNH 517 TA	SNH 517 TS	21316 K	H 316
							21317 K	H 317
							22316 K	H 2316
	SNH 617	SNH 520-617	SNH 617 TG	SNH 617 TC	SNH 617 TA	SNH 617 TS	1217 K	H 217
							2217 K	H 317
							22217 K	H 317
80	SNH 518	SNH 518	SNH 518 TG	SNH 518 TC	SNH 518 TA	SNH 518 TS	1317 K	H 317
							2317 K	H 2317
							21317 K	H 317
	SNH 618	SNH 618	SNH 618 TG	SNH 618 TC	SNH 618 TA	SNH 618 TS	22317 K	H 2317
							1218 K	H 218
							2218 K	H 318
SNH 618	SNH 618	SNH 618 TG	SNH 618 TC	SNH 618 TA	SNH 618 TS	22218 K	H 318	
						1318 K	H 318	
						2318 K	H 2318	
SNH 618	SNH 618	SNH 618 TG	SNH 618 TC	SNH 618 TA	SNH 618 TS	21318 K	H 318	
						22318 K	H 2318	



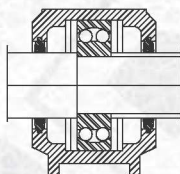
series  
**SNH 500-600**



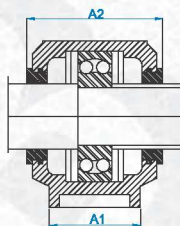
Housing with double-lip seals type TG



Housing with felt seals type TC



Housing with V-Ring seals type TA



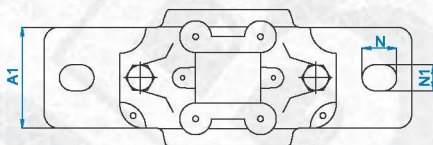
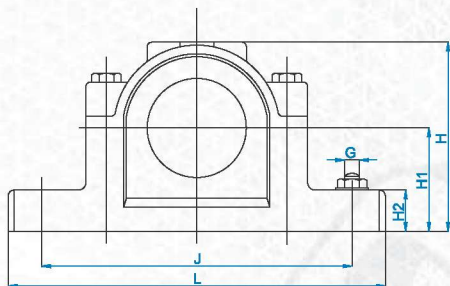
Housing with labyrinth seals type TS

DIMENSIONS														LOCATING RING	END COVER
A	A1	A2	Ca	Dc	H	H1	H2	J	L	N	N1	G	Kg		
115	80	127	56	130	154	80	30	230	280	24	18	16	7	2 FRB 15,5/130	ASNH 515-612
														2 FRB 12,5/130	
														2 FRB 12,5/130	
140	100	158	65	160	193	100	35	290	345	28	22	20	12,5	2 FRB 14/160	ASNH 518-615
														2 FRB 5/160	
														2 FRB 14/160	
120	90	138	58	140	175	95	32	260	315	28	22	20	9,5	2 FRB 5/160	ASNH 516-613
														2 FRB 16/140	
														2 FRB 12,5/140	
145	100	163	68	170	210	112	35	290	345	28	22	20	13,7	2 FRB 12,5/140	ASNH 519-616
														2 FRB 14,5/170	
														2 FRB 5/170	
125	90	143	61	150	183	95	32	260	320	28	22	20	10	2 FRB 16,5/150	ASNH 517
														2 FRB 12,5/150	
														2 FRB 12,5/150	
160	110	178	70	180	215	112	40	320	380	32	26	24	17,6	2 FRB 14,5/180	ASNH 520-617
														2 FRB 5/180	
														2 FRB 14,5/180	
140	100	158	65	160	193	100	35	290	345	28	22	20	12,5	2 FRB 5/180	ASNH 518-615
														2 FRB 17,5/160	
														2 FRB 12,5/160	
155	110	128	74	190	229	112	40	320	380	32	26	24	22	2 FRB 12,5/160	ASNH 618
														2 FRB 15,5/190	
														2 FRB 5/190	





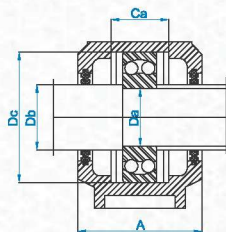
series  
**SNH 500-600**



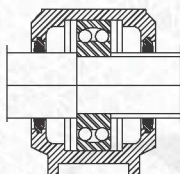
SHAFT DIAMETER Da	HOUSING NO	HOUSING WITHOUT SEALS	HOUSING WITH DOUBLE-LIP SEAL	HOUSING WITH FELT SEALS	HOUSING WITH V-RING SEALS	HOUSING WITH LABYRINTH SEALS	BEARING NO	ADAPTER NO
85	SNH 519	SNH 519-616	SNH 519 TG	SNH 519 TC	SNH 519 TA	SNH 519 TS	1219 K	H 219
							2219 K	H 319
							22219 K	H 319
	SNH 619	SNH 522-619	SNH 619 TG	SNH 619 TC	SNH 619 TA	SNH 619 TS	1319 K	H 319
							2319 K	H 2319
							21319 K	H 319
90	SNH 520	SNH 520-617	SNH 520 TG	SNH 520 TC	SNH 520 TA	SNH 520 TS	22319 K	H 2319
							22319 K	H 2319
							1220 K	H 220
							2220 K	H 320
							22220 K	H 320
							23220 K	H 2320
	SNH 620	SNH 524-620	SNH 620 TG	SNH 620 TC	SNH 620 TA	SNH 620 TS	1320 K	H 320
							2320 K	H 2320
							21320 K	H 320
							22320 K	H 2320
							1222 K	H 222
							2222 K	H 322
100	SNH 522	SNH 522-619	SNH 522 TG	SNH 522 TC	SNH 522 TA	SNH 522 TS	22222 K	H 322
							22222 K	H 322
							23222 K	H 2322
							1224 K	H 3124
							22224 K	H 3124
110	SNH 524	SNH 524-620	SNH 524 TG	SNH 524 TC	SNH 524 TA	SNH 524 TS	23224 K	H 2324
							22226 K	H 3126
							23226 K	H 2326
115	SNH 526	SNH 526	SNH 526 TG	SNH 526 TC	SNH 526 TA	SNH 526 TS	22228 K	H 3128
							23228 K	H 2328
							22230 K	H 3130
125	SNH 528	SNH 528	SNH 528 TG	SNH 528 TC	SNH 528 TA	SNH 528 TS	22230 K	H 2330
							22232 K	H 3132
135	SNH 530	SNH 530	SNH 530 TG	SNH 530 TC	SNH 530 TA	SNH 530 TS	22232 K	H 3132
							23232 K	H 2332
140	SNH 532	SNH 532	SNH 532 TG	SNH 532 TC	SNH 532 TA	SNH 532 TS	22232 K	H 3132
							23232 K	H 2332



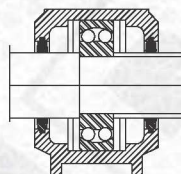
series  
**SNH 500-600**



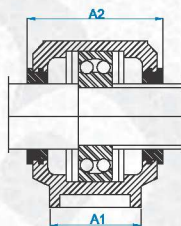
Housing with double-lip seals type TG



Housing with felt seals type TC



Housing with V-Ring seals type TA



Housing with labyrinth seals type TS

DIMENSIONS													LOCATING RING	END COVER	
A	A1	A2	Ca	Dc	H	H1	H2	J	L	N	N1	G			Kg
145	100	163	68	170	210	112	35	290	345	28	22	20	13,7	2 FRB 18/170	ASNH 519-616
														2 FRB 12,5/170	
														2 FRB 12,5/170	
175	120	191	80	200	239	125	45	350	410	32	26	24	22	2 FRB 17,5/200	ASNH 522-619
														2 FRB 6,5/200	
														2 FRB 17,5/200	
160	110	178	70	180	215	112	40	320	380	32	26	24	17,6	2 FRB 18/180	ASNH 520-617
														2 FRB 12/180	
														2 FRB 12/180	
185	120	199	86	215	271	140	45	350	410	32	26	24	26,2	2 FRB 4,85/180	ASNH 524-620
														2 FRB 19,5/215	
														2 FRB 6,5/215	
175	120	191	80	200	239	125	45	350	410	32	26	24	22	2 FRB 19,5/215	ASNH 522-619
														2 FRB 21/200	
														2 FRB 13,5/200	
185	120	199	86	215	271	140	45	350	410	32	26	24	26,2	2 FRB 5,1/200	ASNH 524-620
														2 FRB 22/215	
														2 FRB 14/215	
190	130	208	90	230	290	150	50	380	445	35	28	24	33	2 FRB 5/215	ASNH 526
														2 FRB 13/230	
														2 FRB 5/230	
205	150	233	98	250	302	150	50	420	500	42	35	30	40	2 FRB 15/250	ASNH 528
														2 FRB 5/250	
														2 FRB 15,5/270	
220	160	241	106	270	323	160	60	450	530	42	35	30	49	2 FRB 5/270	ASNH 530
														2 FRB 5/270	
														2 FRB 17/290	
235	160	254	114	290	344	170	60	470	550	42	35	30	55	2 FRB 5/290	ASNH 532
														2 FRB 5/290	