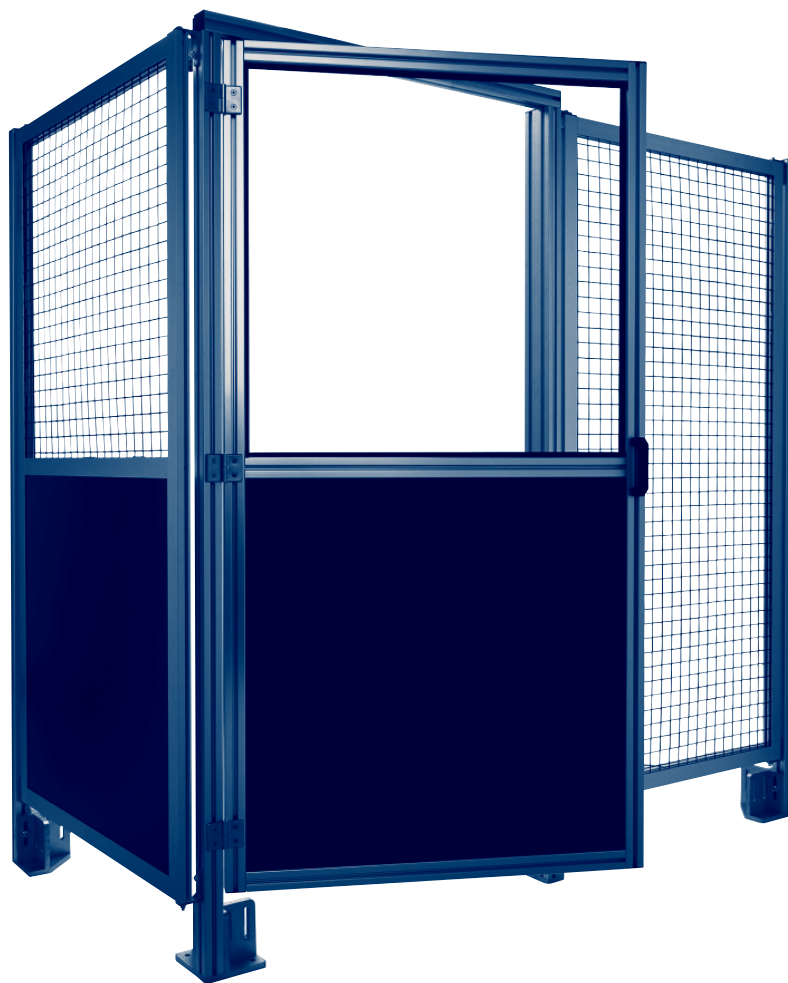


Machine Fencing System

Machine Fencing System (MFS)



The **HepcoMotion MFS Machine Fencing System** compatible with our **MCS** aluminium profile product range enables cost effective barriers to be constructed around machine installations such as Gantries, Pick and Place equipment and floor mounted robot systems.

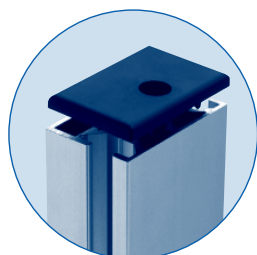
Conforming to current Industry standards this maintenance free system is easy to construct and offers a lower cost alternative to similar systems.

HepcoMotion's MFS system can be supplied as pre-assembled panels to the customer's drawings or as individual components for the customer to machine and assemble in their own workshop. Delivery is fast with all major components carried ex-stock.

We would be pleased to discuss your future requirements for standard **MFS** components as well as specific non standard items such as locks, switches and specialist panel requirements.

MCS Machine Construction System and MFS Machine Fencing System

Machine Fencing System




End cap

End caps to close off the slot profiles and vertical profile sections.

 39




Two-slot profile

Provides a mid section support either vertical or horizontal to break up large single frames and ensure maximum rigidity to the assembled mesh/panel.  38



One-slot profile

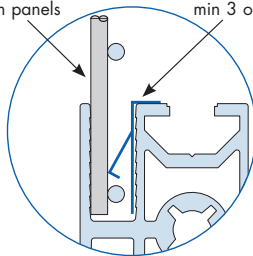
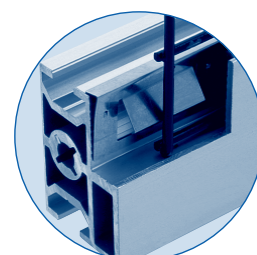
A light but very rigid section used for the main frame surround. A deep 8mm wide slot allows an extensive range of mesh and panel options to be fitted in combination with the **Panel retaining clip**. An 8mm T-slot allows further attachment of additional accessories should the need arise.  38

Mesh/Panel retaining clip detail

3mm welded mesh or 2.6mm panels

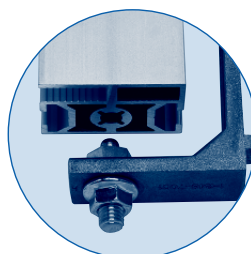
Panel retaining clip, min 3 off/metre

 39




Panel retaining clip

This unique fixing clip developed by Hepco will ensure that almost all types of wire mesh sheeting or polycarbonate/steel panels which are fitted within the 8mm slot profiles are securely retained and will not rattle or vibrate. Designed for 2.6mm sheet panels and all 3mm wire mesh, the sprung feet of the clip ensure universal fitting into the profile slot and the location teeth ensure the clips cannot become dislodged. (8mm panels and 4mm wire mesh do not normally require the additional use of these clips.) The number of clips needed is dependant on the panel material being used.



Panel fixing kit

A complete kit of parts for securing the fencing panel to its vertical post support. The lower bracket with its domed location stud is fully adjustable to allow for small misalignments between the vertical posts. Two bolts at the top are all that is necessary to firmly secure the fencing panel in place no matter what size of panel is being used. The swivel action of the panel fixing kit allows panels to be laid out in at any angle not just 90 degrees.  39

Vertical post

Utilising the MCS 45 Light and 45/90 Light sections the vertical post is secured into the **Foundation Block** with standard T-Bolts and Nuts. The 45/90 Light provides additional support and rigidity where long unsupported runs are necessary, corners, returns and around door frames. The 10mm T-slot allows the panel mounting kit, hinges etc. to be speedily assembled using standard or sprung loaded T-nuts. [10/12](#)

Sliding doors

A range of sliding door movements can be incorporated into the Machine Fencing System with or without a lower support profile. This is especially useful where clear access is required through the enclosure for say forklift trucks etc. [40](#)

Connection screws

Used to secure **slot profiles** together and provide a strong and hidden 90-degree joint. [18](#)

Panel options

HepcoMotion's Machine Fencing System has been developed to allow designers to incorporate an extensive range of standard wire mesh and sheet panel options for almost any industrial situation. Panels up to 8mm thick can be fitted directly into the slot profiles. Special panels can be supplied to customers requirements.

Wire mesh

Wire mesh in Ø3mm standard welded either self-coloured or black powder coated 25mm sq, 40mm sq, 50mm sq and 75 x 13 letterbox. (Non-standard 4mm, woven and special painting is available on request.)

Polycarbonate panels

5 and 6mm in clear and coloured versions, including dense foam sheet which is ideal for fencing structures where through visibility is not a requirement.

Die cast lift off hinge

These plated hinges provide a strong and flexible method of attaching doors or windows and other movable panels within your fencing system.

Available in **L/H and R/H Lift off** options as well as a **fixed** version all supplied complete with the necessary fixings to our standard vertical posts. [32](#)

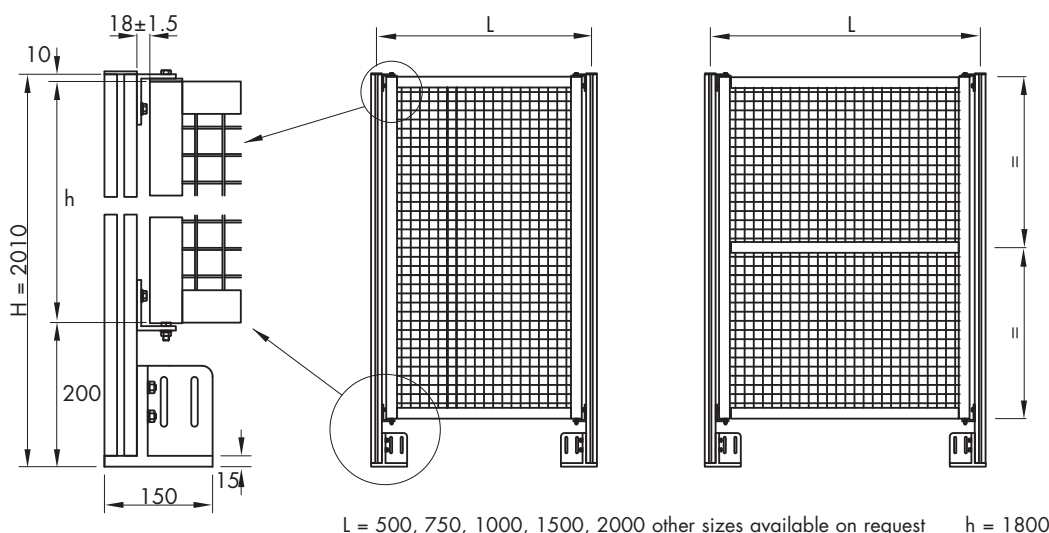
Foundation Block Kit

The foundation block will accept the **45L** and **45/90L Vertical posts** and is universally handed for all mounting requirements. Supplied complete with necessary **T-Bolts and Nuts**. [39](#)

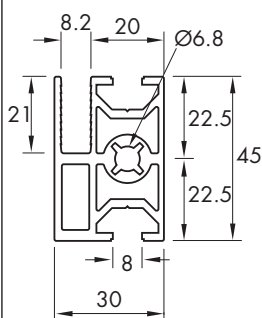
MCS Machine Construction System and **MFS** Machine Fencing System

Machine Fencing System

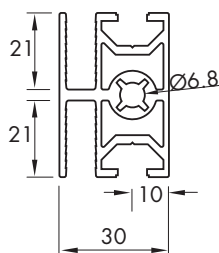
MFS Standard Panel sizes



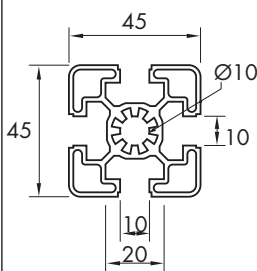
Fencing Profile (1 Slot) 0-133-7001



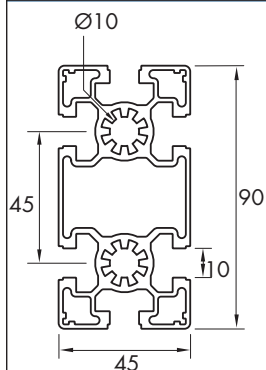
Fencing Profile (2 Slots) 0-133-7002



Profile 45x45L 0-132-4546



Profile 45x90L 0-132-4591



Technical Data

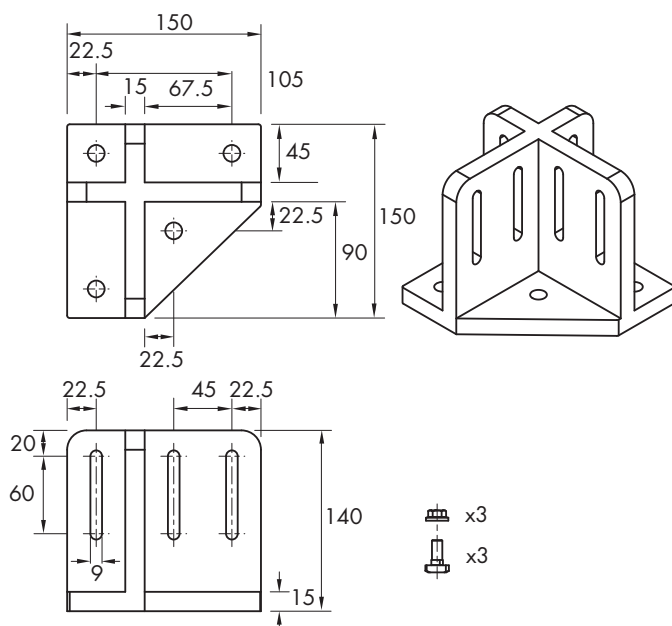
	Fencing Profile (1slot)	Fencing Profile (2 slots)	Profile 45x45L	Profile 45x90L
Max. Length	5600mm	5600mm	5600mm	5600mm
Mass	1.35kg/m	1.3kg/m	1.5g/m	3.15kg/m

Machine Fencing System

Foundation Block Set

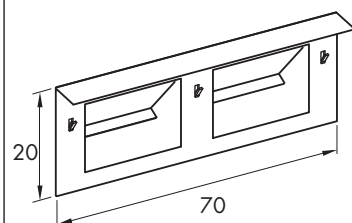
1-242-7700 S

Complete with T-Bolt fixings



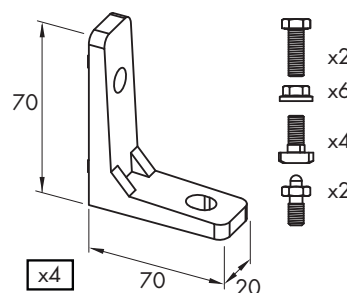
Mesh/Panel Retaining Clip

1-243-7003



Fixing Bracket Set

1-243-7001S



Sponge Retaining Strip

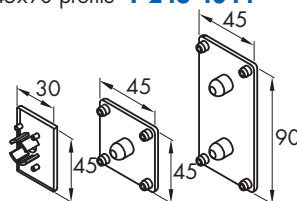
1-242-2510

(Retaining mesh in 45 profiles
10mm T-slot)



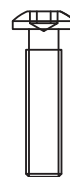
End Caps

Slot profile **1-243-7002**
45x45 profile **1-243-4042**
45x90 profile **1-243-4044**



Connection Screws

Connection screw for slot profiles
1-242-1034 (M8)
Connection screw for
45 & 90 profiles
1-242-1005 (M12)



Technical Data

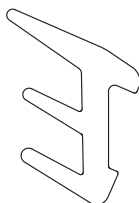
	Foundation Block Set	Fixing Bracket Set
Material	Aluminium	Aluminium
Finish	None	None
Mass	1.9kg	0.3kg/m

MCS Machine Construction System and **MFS** Machine Fencing System

Machine Fencing System

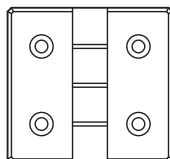
Glazing Strip

See page 30



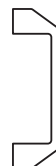
Die Cast Hinges

See page 32.
Lift off example page 37

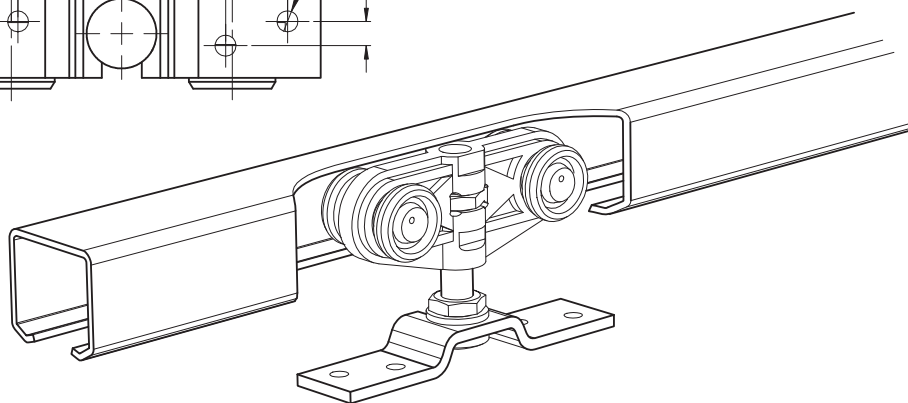
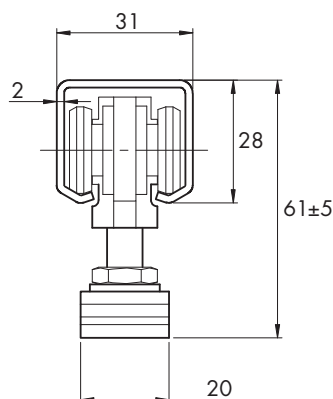
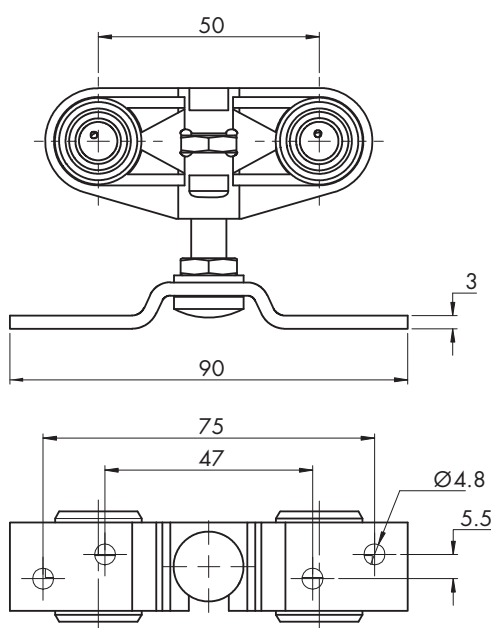


Handle for 45 profiles

See page 33



Sliding Door System



For further details please contact our Technical Sales Team.