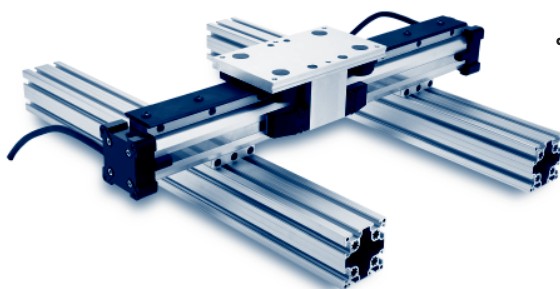


Profiles with Linear Guides

MCS Profiles with Linear Guides

Hepco Powerslide 2 supported on MCS Profile Beams



Request the MCS/HPS catalogue & Mounting document (01884 257000) or download from the HepcoMotion website: www.HepcoMotion.com



High-speed, maintenance free performance are the key benefits of **Hepco's Powerslide 2**, with ex-stock availability and standard lengths up to 6m.

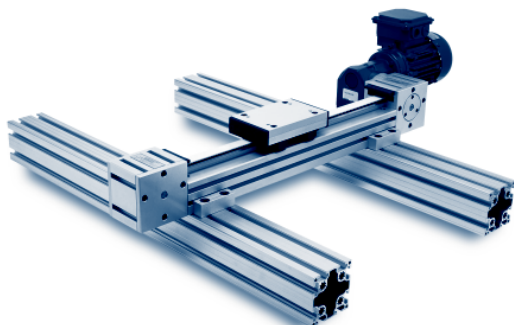
The **HPS** range of pneumatic linear systems is based around an extruded aluminium cylinder ideal for mounting to **MCS**. With the optional addition of **Hepco SH** shock absorbers high speed, long life systems can be achieved.

Mounting to **MCS** profiles whether by the end caps or tailored connectors could not be easier. For further details please contact Hepco's Technical Sales Team.

Benefits

- Self supporting • Long life • 10 size combinations • High load • Easy installation
- Corrosion resistant options

Hepco Driven Linear System supported on MCS profile beams



Request the MCS/DLS catalogue & Mounting document (01884 257000) or download from the HepcoMotion website: www.HepcoMotion.com



New fixing options are available in the **MCS** range allowing specifiers to take advantage of the ready to mount high speed Driven Linear System.

Ideal for simple linear or multi-axis systems, **DLS** incorporates all of the Hepco V-guide benefits of zero maintenance and environmental tolerance, but combines them with a robust belt drive producing speeds of up to 6m/s and standard lengths up to 8m.

A range of mounting options are available to enable easy connection to **MCS** profiles which, due to their interchangeability with other profiles, makes this the ideal system for retro-fitting machine elements.

Benefits

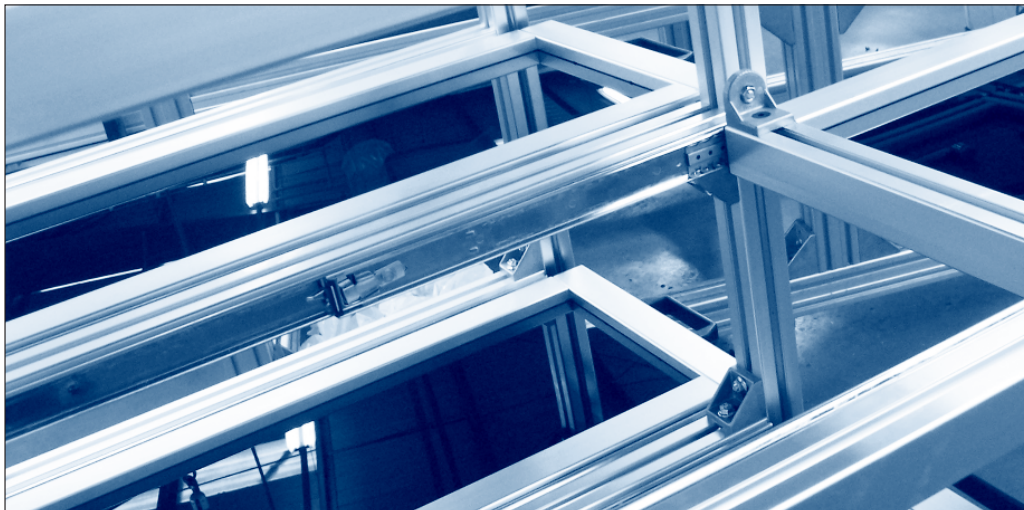
- Long system life • Low maintenance • High speed • Quiet operation
- Easy secondary machining • Robust AC motor system

MCS Machine Construction System and **MFS** Machine Fencing System

Profiles with Linear Guides

MCS Profiles with Linear Guides

Hepco HTS Telescopic Ball Bearing Slides mounted to MCS profiles



Hepco HTS telescopic ball bearing slides are manufactured under strict quality control conditions backed by ISO 9002 certification using the highest quality materials and up to date manufacturing processes. These high quality slides are quiet, rigid under extended loads and due to the superior construction offer excellent smooth motion and low friction characteristics across the complete travel length.

Hepco's Telescopic slides are an ideal partner with **MCS** aluminium profile sections enabling simple yet rigid drawers, printer tables, circuit board packs etc to be designed into any Hepco **MCS** frame available. Mounting of the slides is simple utilising Hepco's range of anti rotation T-Nuts.

Features and Benefits

- 5 basic ranges from light to heavy duty up to 280kg/pair
- Range of options available, lock out, lever disconnect etc.
- Standard ranges available from stock
- Rigid member ball bearing slide structure maintains smooth motion over entire travel
- High static capacity from rigid structure with minimal deflection
- Quality cold rolled steel members with slotted mounting holes for quick installation
- Exceptional accuracy from precision pressed slide rails
- 3 member slide series for higher capacity in narrow space

Request the HTS catalogue (01884 257000) or download from the HepcoMotion website: www.HepcoMotion.com





RODAVIGO, S.A.
RODAMIENTOS VIGO, S.A.

www.rodavigo.net

+34 986 288118
Servicio de Att. al Cliente

HepcoMotion® Product Range



GV3
Linear Guidance and
Transmission System



HDS2
Heavy Duty
Slide System



PRT2
Precision Ring and
Track System



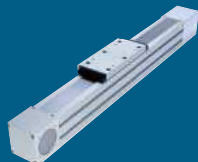
HDRT
Heavy Duty Ring Slides
and Track System



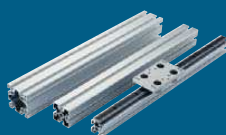
SL2
Stainless Steel Based
Slide System



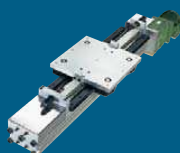
LBG
Linear Ball Guides



SBD
Sealed Belt
Drive



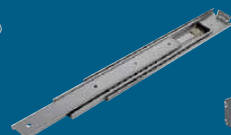
MCS
Aluminium Frame
and Machine
Construction System



HDLS
Heavy Duty Driven
Linear System



DLS
Linear Transmission and
Positioning System



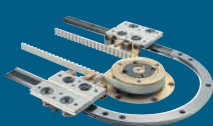
HTS
Telescopic Ball
Bearing Slides



HPS
Powerslide-2 Guided
Rodless Cylinder



MHD
Heavy Duty Track Roller
Guidance System



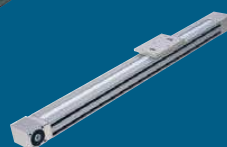
DTS
Driven Track System



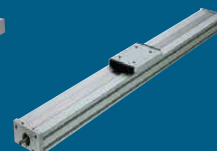
BSP
Ballscrew Premier



SimpleSelect®
Vee Slide Linear
Guidance Systems



PDU2
Profile Driven Unit



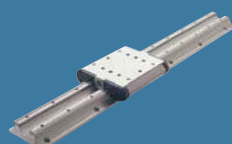
PSD120
Profile Screw Driven Unit

Bishop-Wisecarver Product Range

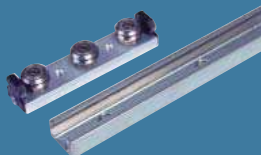
HepcoMotion® – Exclusive European partners and distributors for Bishop-Wisecarver since 1984.



DUALVEE®
Single Edge Slide System



LoPro®
Aluminium Based
Slide System



UtiliTrak®
Lightweight U Channel
Guideway

For further information on HepcoMotion® products –
please request our leaflet 'FPL'

HepcoMotion®

www.HepcoMotion.com



INVESTOR IN PEOPLE



Lower Moor Business Park, Tiverton Way, Tiverton, Devon, England EX16 6TG

Tel: +44 (0)1884 257000 Fax: +44 (0)1884 243500

E-mail: sales@hepcotion.com

CATALOGUE No. MCS 07 UK © 2012 Hepco Slide Systems Ltd.

Reproduction in whole or part without prior authorisation from Hepco is prohibited. Although every effort has been made to ensure the accuracy of the information in this catalogue, Hepco cannot accept liability for any omissions or errors. Hepco reserves the right to make alterations to the product resulting from technical developments.

Many Hepco products are protected by: Patents, Copyright, Design Right or Registered Design. Infringement is strictly prohibited and may be challenged in law. The Customer's attention is drawn to the following clause in Hepco's conditions of sale:

'It shall be the Customer's sole responsibility to ensure that goods supplied by Hepco will be suitable or fit for any particular application or purpose of the Customer, whether or not such application or purpose is known to Hepco. The Customer will be solely responsible for any errors in, or omissions from, any specifications or information the Customer provides. Hepco will not be obliged to verify whether any such specifications or information are correct or sufficient for any application or purpose.'

Hepco's full conditions of sale are available on request and will apply to all quotations and contracts for the supply of items detailed in this catalogue.

HepcoMotion is the trading name of Hepco Slide Systems Ltd.



Scan this QR code to take
you to the HepcoMotion
home page.