



RODAVIGO, S.A.

RODAMIENTOS VIGO, S.A.

www.rodavigo.net

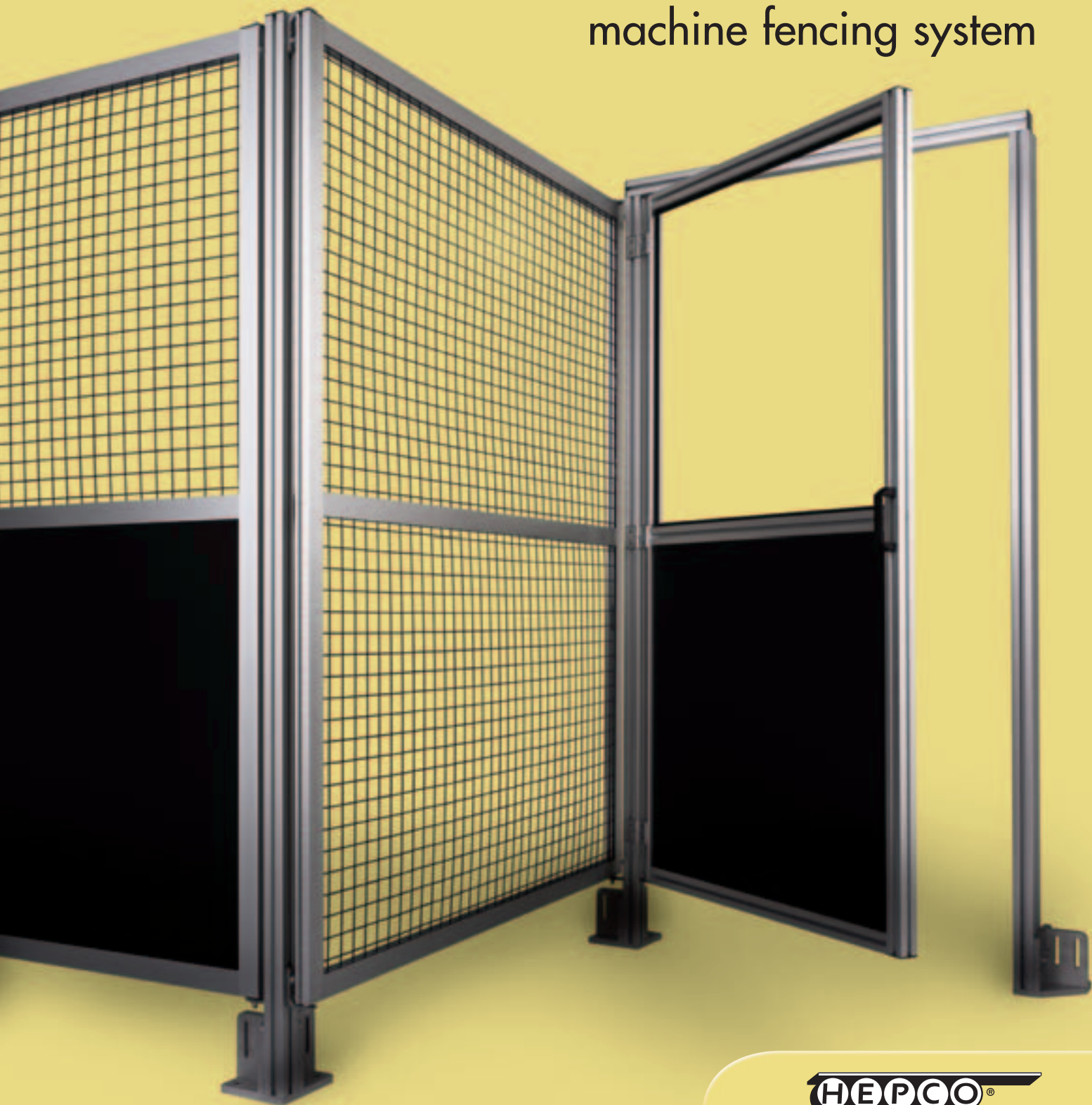
+34 986 288118

Servicio de Att. al Cliente

HepcoMotion®

MFS

machine fencing system



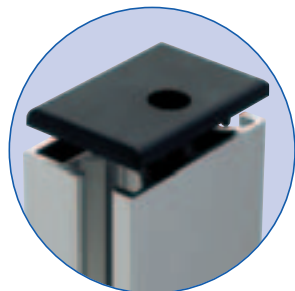
HEPCO®
www.HepcoMotion.com



Introducing the **MFS Machine Fencing System**

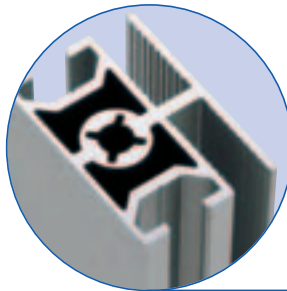
The HepcoMotion MFS Machine Fencing System compatible with our MCS aluminium profile product range provides economical barriers around machine installations such as Gantries, Pick and Place equipment and floor mounted robot systems

Conforming to current Industry standards this maintenance free system is easy to construct and offers a lower cost alternative to steel fence constructions.



End cap

End caps to close off the slot profiles and vertical profile sections.



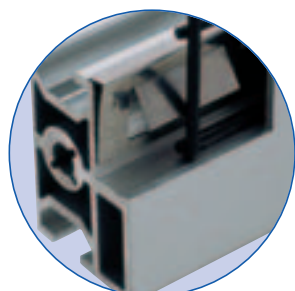
Two-slot profile

Provides a mid section support either vertical or horizontal to break up large single frames and ensure maximum rigidity to the assembled mesh/panel.



One-slot profile

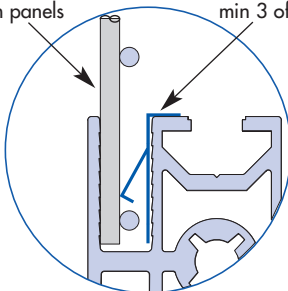
A light but very rigid section used for the main frame surround. A deep 8mm wide slot allows an extensive range of mesh and panel options to be fitted in combination with the **Panel retaining clip**. An 8mm T-slot allows further attachment of additional accessories should the need arise.



Mesh/Panel retaining clip detail

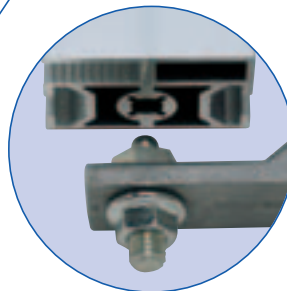
3mm welded mesh or 2-6mm panels

Panel retaining clip, min 3 off/metre



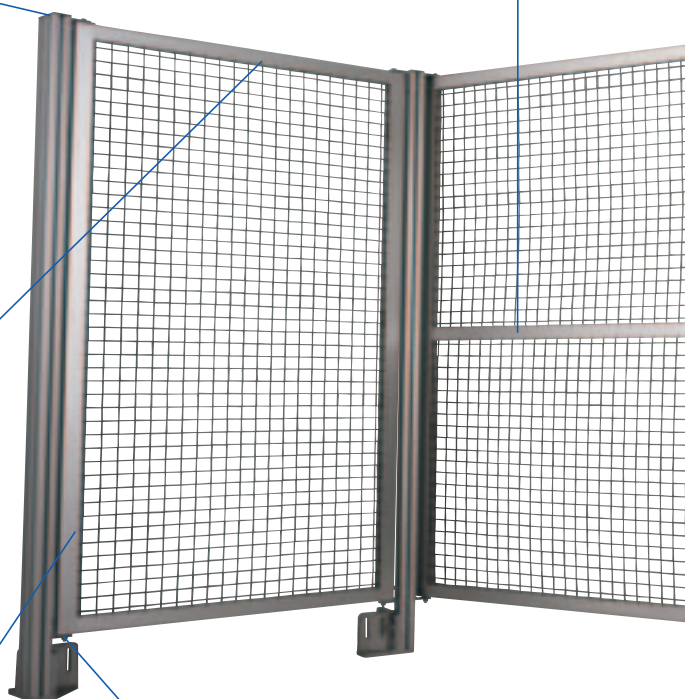
Panel retaining clip

This unique fixing clip developed by Hepco will ensure that almost all types of wire mesh sheeting or polycarbonate/steel panels which are fitted within the 8mm slot profiles are securely retained and will not rattle or vibrate. Designed for 2-6mm sheet panels and all 3mm wire mesh the sprung feet of the clip ensure universal fitting into the profile slot and the location teeth ensure the clips cannot become dislodged. (8mm panels and 4mm wire mesh do not normally require the additional use of these clips.) The number of clips needed is dependant on the panel material being used.



Panel fixing kit

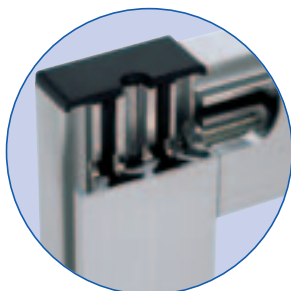
A complete kit of parts for securing your fencing panel to its vertical post support. The lower bracket with its domed location stud is fully adjustable to allow for small misalignments between the vertical posts. Two bolts at the top are all that is necessary to firmly secure the fencing panel in place no matter what size of panel you are using. The swivel action of the panel fixing kit allows panels to be laid out in at any angle not just 90 degrees.





Vertical post

Utilising our MCS 45 Light and 45/90 Light section the vertical post is secured into the **Foundation Block** with standard T-Bolts and Nuts. The 45/90 Light provides additional support and rigidity where long unsupported runs are necessary, corners, returns and around door frames. The 10mm T-slot allows the panel mounting kit, hinges etc. to be speedily assembled using our standard or sprung loaded T-nuts.

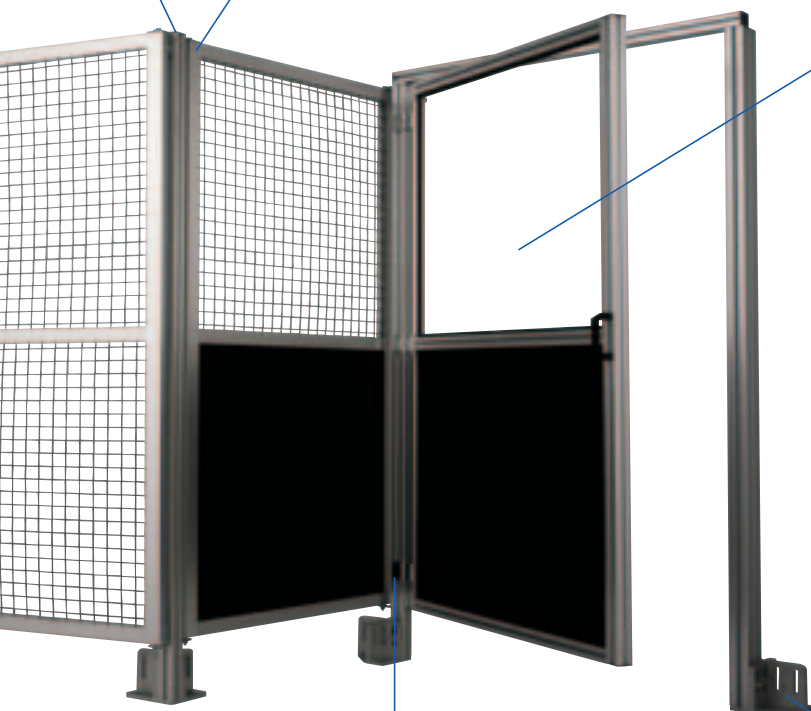
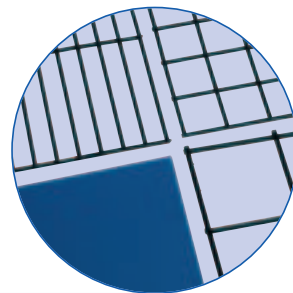


Connection screws

Used to secure **slot profiles** together and provide a strong and hidden 90-degree joint.

Sliding doors

A range of sliding door movements can be developed into the Machine Fencing System with or without a lower support profile. The latter is especially useful where clear access is required through the enclosure for say forklift trucks etc.



Panel options

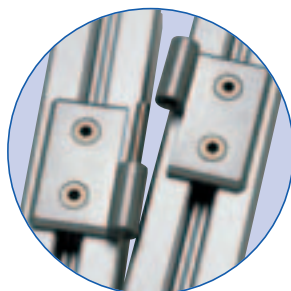
HepcoMotions Machine Fencing System has been developed to allow designers to incorporate an extensive range of standard wire mesh and sheet panel options (special panels to customers design on application) for almost any industrial situation. Panels up to 8mm thick can be fitted directly into the slot profiles.

Wire mesh

Wire mesh in 3mm Standard Welded either self-coloured or black powder coated 25mm sq, 38mm sq, 50mm sq and 75 x 13 letterbox. (Non-standard 4mm, woven and special painting on request).

Polycarbonate panels

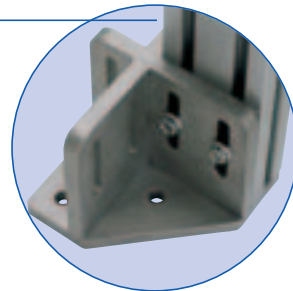
5 and 6mm in clear and coloured versions including dense foam sheet ideal for fencing structures where through visibility is not a requirement.



Die cast lift off hinge

These plated hinges provide a strong and flexible method of attaching doors or windows and other movable panels within your fencing system.

Available in **L/H and R/H Lift off** options as well as a **fixed** version all supplied complete with the necessary fixings to our standard vertical posts.

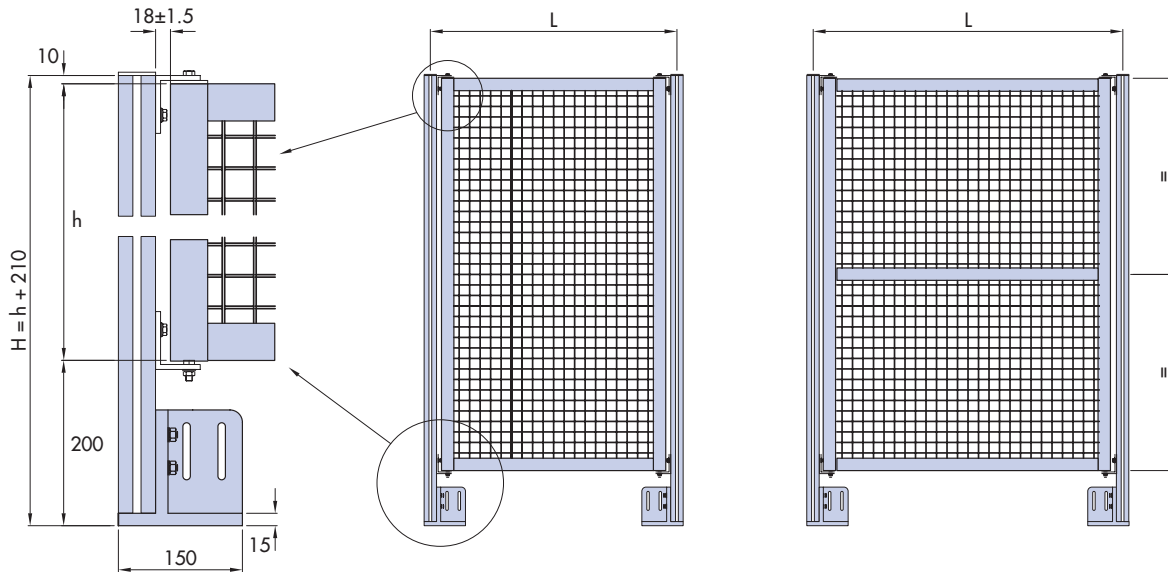


Foundation Block Kit

The foundation block will accept the **45L** and **45/90L Vertical posts** and is universally handed for all mounting requirements. Supplied complete with necessary **T-Bolts and Nuts**.



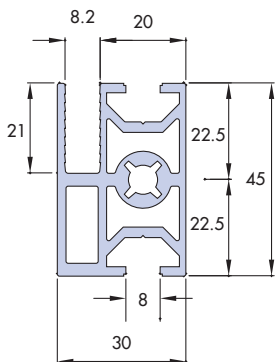
MFS Standard Panel sizes



L = 500, 750, 1000, 1500, 2000 other sizes available on request h = 1800

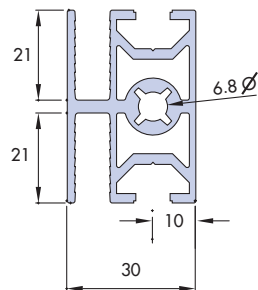
0-133-7001

Fencing Profile (1 Slot)



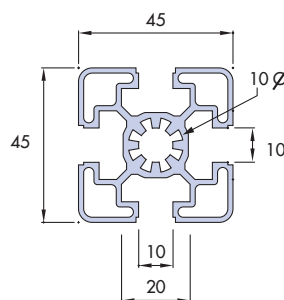
0-133-7002

Fencing Profile (2 Slots)



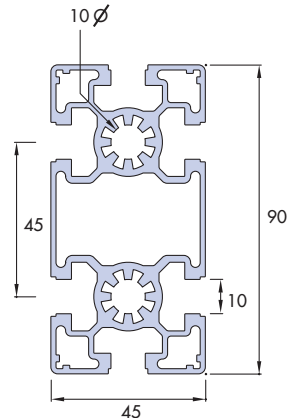
0-132-4546

Profile 45x45L



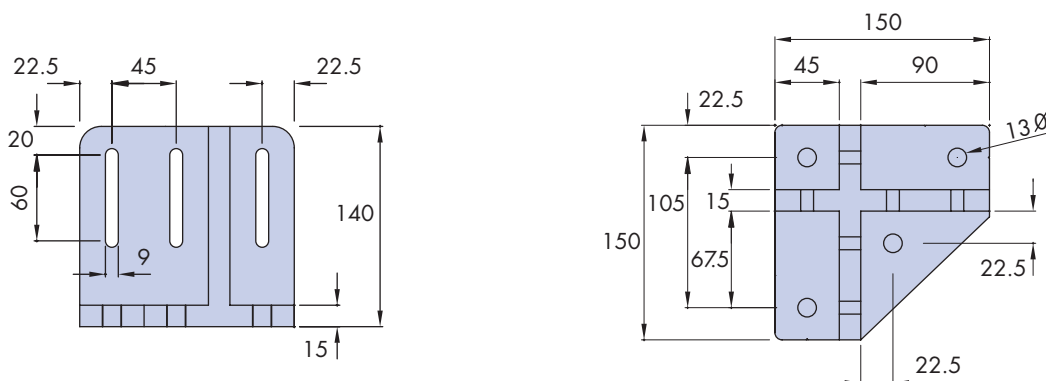
0-132-4591

Profile 45x90L



1-242-7700

Foundation Block

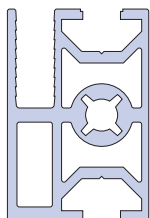




Ordering Details

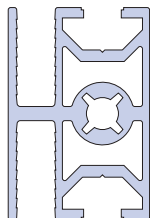
0-133-7001

One slot profile
(random 5.6m)



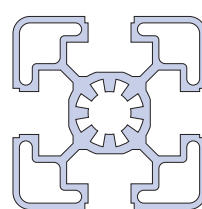
0-133-7002

Two slot profile
(random 5.6m)



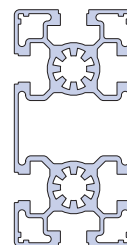
0-132-4546

45x45 Light profile
Random 5.6m



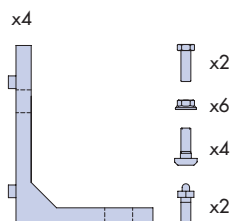
0-132-4591

45x90 Light profile
Random 5.6m



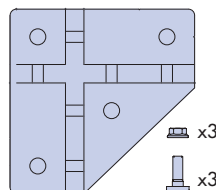
1-243-7001S

Fixing Bracket set



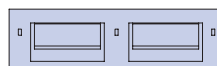
1-242-7700S

Foundation block set



1-243-7003

Mesh/panel retaining clip



End caps

Slot profile 1-243-7002
45x45 profile 1-243-4042
45x90 profile 1-243-4044

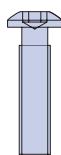


1-242-1034

Connection screw for
slot profiles

1-242-1005

Connection screw for
45 & 90 profiles



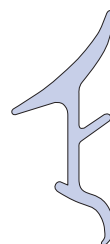
1-242-2510

Sponge retaining strip
(retaining mesh in 45 profiles
10mm T-slot)



1-242-1057

Glazing strip



1-243-0033

Handle for 45 profiles (order
with 2 off M8 T-nut 1-242-1002
& M8x20 cap head screw)

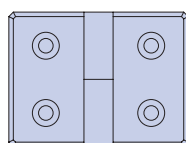


1-243-7005S

Lift off hinge set RH

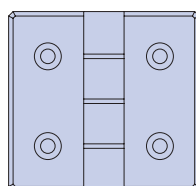
1-243-7006S

Lift off hinge set LH



1-243-8085S

Fixed hinge



HepcoMotion's MFS system can be supplied as pre-assembled panels to the customer's drawings or as individual components for the customer to machine and assemble in their own workshop. Delivery is fast with all major components carried ex-stock

We would be pleased to discuss your future requirements for standard MFS components as well as specific non standard items such as locks, switches and specialist panel requirements.

Please contact our MFS specialists on
tel: 01884 257000 or fax: 01884 243500



RODAVIGO, S.A.
RODAMIENTOS VIGO, S.A.

www.rodavigo.net

+34 986 288118
Servicio de Att. al Cliente

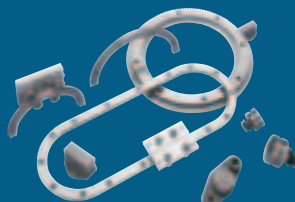
HepcoMotion® Product Range



GV3
Linear Guidance and
Transmission System



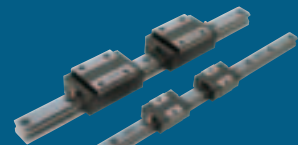
HDS
Heavy Duty Slide System



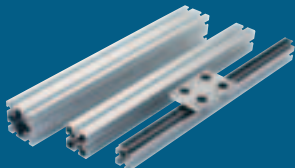
PRT
Ring Slides and
Track System



SL2
Stainless Steel Based
Slide System



LBG
Linear Ball Guides



MCS
Aluminium Frame and
Machine Construction System



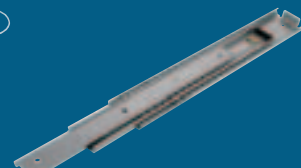
HPS
Powerslide-2 Guided
Rodless Cylinder



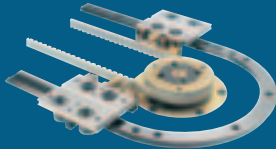
HDLS
Heavy Duty Driven
Linear System



DLS
Linear Transmission and
Positioning System



HTS
Telescopic Ball
Bearing Slides



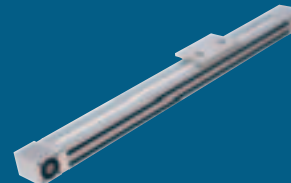
DTS
Driven Track System



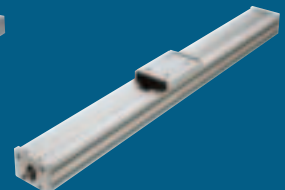
BSP
Ballscrew Premier



Simple Select®
Vee Slide Linear
Guidance Systems



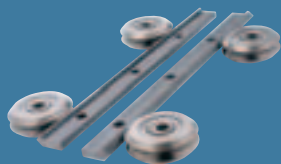
PDU2
Profile Driven Unit



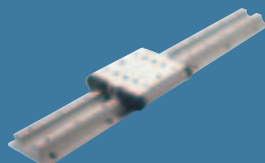
PSD120
Profile Screw Driven Unit

BishopWisecarver Product Range

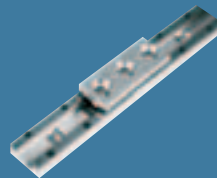
HepcoMotion® – Exclusive European partners and distributors for Bishop-Wisecarver since 1984.



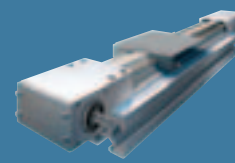
DUAL VEE
Single Edge Slide System



LoPro
Aluminium Based
Slide System



Utilitrak
Lightweight U Channel
Guideway



QuickTrak
Linear Motion System

For further information on HepcoMotion® products –
please request our leaflet 'FPL'



www.HepcoMotion.com

HepcoMotion®

Lower Moor Business Park, Tiverton Way, Tiverton, Devon, England EX16 6TG

Tel: +44 (0)1884 257000 Fax: +44 (0)1884 243500

Email: sales@hepcotion.com

CATALOGUE No. MFS 01 UK © 2005 Hepco Slide Systems Ltd.

Reproduction in whole or part without prior authorisation from Hepco is prohibited. Although every effort has been made to ensure the accuracy of the information in this catalogue, Hepco cannot accept liability for any omissions or errors. Hepco reserves the right to make alterations to the product resulting from technical developments.

Many Hepco products are protected by: Patents, Copyright, Design Right or Registered Design. Infringement is strictly prohibited and may be challenged in law. The Customer's attention is drawn to the following clause in Hepco's conditions of sale:

'It shall be the Customer's sole responsibility to ensure that goods supplied by Hepco will be suitable or fit for any particular application or purpose of the Customer, whether or not such application or purpose is known to Hepco. The Customer will be solely responsible for any errors in, or omissions from, any specifications or information the Customer provides. Hepco will not be obliged to verify whether any such specifications or information are correct or sufficient for any application or purpose.'

Hepco's full conditions of sale are available on request and will apply to all quotations and contracts for the supply of items detailed in this catalogue.

HepcoMotion is the trading name of Hepco Slide Systems Ltd.



INVESTOR IN PEOPLE

