



This data sheet interacts with

PRT2 Catalogue

GV3 Catalogue

SL2 Catalogue

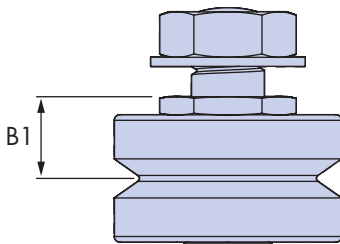
HepcoMotion®

Controlled Height Bearings - CHK

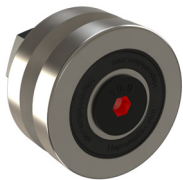
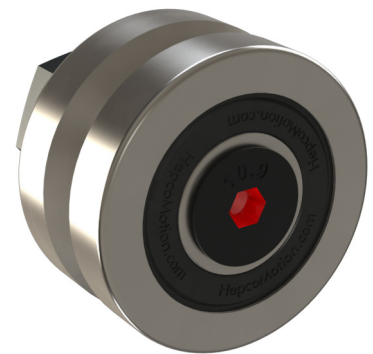
HepcoMotion® Controlled Height Bearings (CHK) are available for GV3, PRT2 and SL2 product ranges. CHK bearings are designed to minimise the variation in the V height of the bearing, this is desirable in high precision application, and in carriages using double row bearings. Selected in $\pm 0.010\text{mm}$ bands in respect of the B1 dimension, they can be supplied in sets of up to 50 parts as standard, with larger sets on request.

CHK bearings of differing bands should not be mixed in any on carriage or bearing & ring assembly. In applications with multiple carriages it recommended that bearings with adjacent tolerance bands are used in carriages that will be assembled next to each other.

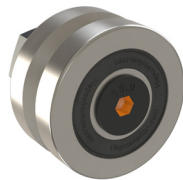
To aid identification, bearings are supplied with a colour coded mark located in the hexagon recess on the underside of the bearing, as shown below.



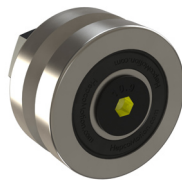
Identification Colour	B1 Tolerance	
	Band	B1
Red	A	-0.05 -0.03
Orange	B	-0.03 -0.01
Yellow	C	-0.01 +0.01
Green	D	+0.01 +0.03
Blue	E	+0.03 +0.05



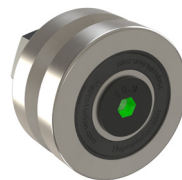
Red



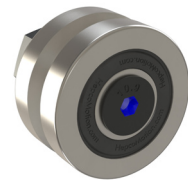
Orange



Yellow



Green



Blue

HepcoMotion®, Lower Moor Business Park,
Tiverton Way, Tiverton, Devon, England EX16 6TG

Tel: +44 (0) 1884 257000

Fax: +44 (0) 1884 243500

E-mail: sales@hepcotion.com



INVESTOR IN PEOPLE



HEPCO®

www.HepcoMotion.com