

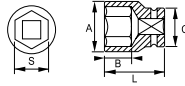
IRIMO

4. Vasos

Vasos 3/8"

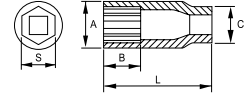
VASOS 3/8" HEX

3/8"
10 mm



Perfil NPP hace que la superficie de apoyo sea en el lateral, no en las esquinas

VASOS 3/8" HEX, SERIE LARGA



Perfil NPP hace que la superficie de apoyo sea en el lateral, no en las esquinas

- Acero aleado Cromo Vanadio
- Acabado cromado brillante
- Perfil NPP
- DIN3120
- DIN3124

- Acero aleado Cromo Vanadio
- Acabado cromado brillante
- Perfil NPP
- DIN3120

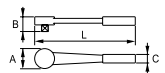
R	Ø	Icon	S mm	A mm	B mm	C mm	L mm	g
112-06-1	5	6	10,5	9,0	17,0	28,0	21	
112-07-1	5	7	11,0	9,0	17,0	28,0	24	
112-08-1	5	8	12,2	9,0	17,0	28,0	27	
112-09-1	5	9	13,5	9,0	17,0	28,0	26	
112-10-1	5	10	14,7	9,0	17,0	28,0	24	
112-11-1	5	11	16,0	9,0	17,0	28,0	26	
112-12-1	5	12	18,0	15,0	17,0	28,0	24	
112-13-1	5	13	19,0	15,0	17,0	28,0	29	
112-14-1	5	14	20,0	15,0	17,7	28,0	38	
112-15-1	5	15	22,0	15,0	17,9	28,0	40	
112-16-1	5	16	22,0	15,0	17,9	28,0	46	
112-17-1	5	17	24,0	15,0	18,8	30,0	56	
112-18-1	5	18	26,0	15,0	19,8	30,0	75	
112-19-1	5	19	26,0	15,0	20,7	30,0	66	
112-20-1	5	20	28,0	15,0	21,8	30,0	88	
112-21-1	5	21	28,0	15,0	21,8	30,0	84	
112-22-1	5	22	30,0	15,0	22,8	32,0	104	

R	Ø	Icon	S mm	A mm	B mm	C mm	L mm	g
113-07-1	5	7	11,0	16,0	17,0	64,0	45	
113-08-1	5	8	12,2	16,0	17,0	64,0	49	
113-09-1	5	9	13,5	16,0	17,0	64,0	53	
113-10-1	5	10	14,7	16,0	17,0	64,0	60	
113-11-1	5	11	17,0	29,0	16,0	64,0	61	
113-12-1	5	12	18,0	29,0	17,2	64,0	63	
113-13-1	5	13	19,0	29,0	16,8	64,0	75	
113-14-1	5	14	20,0	29,0	17,8	64,0	81	
113-16-1	5	16	22,0	29,0	18,0	64,0	98	
113-17-1	5	17	24,0	29,0	18,9	64,0	123	
113-19-1	5	19	26,0	29,0	20,8	64,0	145	

Accesorios 3/8"

CARRACA TIPO PERA

- 72 dientes / Ángulo de acción 5°
- Acabado cromado brillante
- Botón de rápida liberación
- Mango bicomponente
- DIN3120
- DIN3122

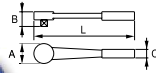


R	Icon	A mm	B mm	C mm	L mm	g
115-70-1	5	33	33	32	202	341

4. Vasos



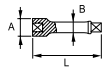
CARRACA REDONDA



- 72 dientes / Ángulo de acción 5°
- Acabado cromado brillante
- DIN 3122/3120
- ISO 3315
- UNE 16512

R	Icon	A mm	B mm	C mm	L mm	g
115501	1	29	30	24	197	230

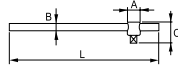
ALARGADERAS



- DIN3120
- DIN3122

R	Icon	A mm	B mm	L mm	g
115-20-1	5	17,0	12,1	75	125
115-22-1	5	17,0	12,1	150	138
115-24-1	5	17,0	12,1	250	232

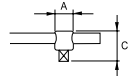
MANGO CORREDIZO EN T



- DIN3120
- DIN3122

R	Icon	A mm	B mm	C mm	L mm	g
115-42-1	5	17,5	8,5	35	152	114

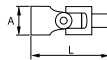
CABEZA MANGO CORREDIZO



- DIN3120

R	Icon	A mm	C mm	g
115-43-1	5	24,0	40,5	30

ARTICULACIÓN UNIVERSAL



- DIN3120
- DIN3122

R	Icon	A mm	L mm	g
115-40-1	5	17,8	59,0	61

REDUCTOR



- Adaptador reductor 3/8" a 1/4"
- DIN3120

R	Icon	A mm	L mm	g
115-46-1	5	16,0	25,0	17



IRIMO

4. Vasos

Accesorios 3/8"

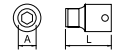
AMPLIADOR



- Aumentador de 3/8" a 1/2"
- DIN3120

Q	Icon	A mm	L mm	g
115-44-1	5	18,0	35,5	45

VASO PORTA PUNTAS



- Hembra cuadrado 3/8" a hembra hex 5/16"
- DIN3120

Q	Icon	A mm	L mm	g
115-48-1	5	5/16"	15,4	28,0

Juego vasos 3/8"

JUEGO VASOS 3/8"

119-18-4

3/8"
10 mm

- Juego vasos 18 piezas
- Vasos Hex mm
- Acabado cromado brillante
- DIN3120, DIN3124 and DIN3122
- Caja fabricada en polietileno de alta densidad y resistencia

Q	Icon	pzs.	mm	g
119-18-4	1	18	320x250x75	3250

112	Icon	Icon	7, 8, 10, 11, 12, 13, 14, 15, 16, 17, 19, 21, 22 mm
115-70-1	Icon	Icon	
115-22-1	Icon	Icon	
115-20-1	Icon	Icon	
115-40-1	Icon	Icon	
115-43-1	Icon	Icon	



Perfil NPP hace que la superficie de apoyo sea en el lateral, no en las esquinas