



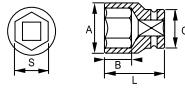
4. Vasos



**Vasos impacto 1/2"**

VASOS 1/2" HEX

1/2"  
12.5 mm



- UNE 16507
- ISO 2725
- DIN 3129

R	Icon	S mm	A mm	B mm	C mm	L mm	g
167-08-1	1	8	15	15	25	38	84
167-10-1	1	10	17,5	15	25	38	89
167-12-1	1	12	19	15	25	38	94
167-13-1	1	13	20	15	25	38	94
167-14-1	1	14	22	15	25	38	94
167-15-1	1	15	23	15	25	38	134
167-16-1	1	16	24	15	25	38	134
167-17-1	1	17	26	15	30	38	134
167-18-1	1	18	27	15	30	38	134
167-19-1	1	19	28	17,5	30	38	134
167-20-1	1	20	29	17,5	30	38	137
167-21-1	1	21	30	17,5	30	38	149
167-22-1	1	22	32	17,5	30	38	149
167-23-1	1	23	34	18	30	40	149
167-24-1	1	24	34	18	30	40	179
167-26-1	1	26	36	22	30	42	189
167-27-1	1	27	38	22	30	42	204
167-30-1	1	30	42	22	30	44	234
167-32-1	1	32	44	22	40	44	282
167-34-1	1	34	46	22	40	48	406
167-36-1	1	36	48	22	40	48	467

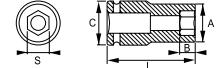
JUEGO VASOS EN RAILS

167-90-2 - 167-91-2



R	Icon	pzs.	g
167-90-2	1	9 - 10 - 12 - 14 - 17 - 19 - 22 - 24 - 27 mm	1.180
167-91-2	1	5 - 17 - 19 - 22 - 24 - 27 mm	835

VASOS 1/2" HEX, SERIE LARGA



R	Icon	S mm	A mm	B mm	C mm	L mm	g
168-10-1	1	10	17,5	24	25	78	118
168-11-1	1	11	18	24	25	78	121
168-13-1	1	13	20	24	25	78	163
168-14-1	1	14	22	37	25	78	190
168-16-1	1	16	24	37	25	78	239
168-17-1	1	17	26	37	30	78	239
168-18-1	1	18	27	37	30	78	239
168-19-1	1	19	28	39	30	78	246
168-21-1	1	21	30	39	30	78	267
168-22-1	1	22	32	39	30	78	328
168-23-1	1	23	34	39	30	78	348
168-24-1	1	24	34	39	30	78	351
168-27-1	1	27	38	39	30	78	373
168-30-1	1	30	42	39	30	78	409

JUEGO VASOS LARGOS EN RAIL

168-90-2



R	Icon	pzs.	g
168-90-2	1	7 - 10 - 13 - 17 - 19 - 22 - 24 - 27 mm	1.735

ANILLAS DE SEGURIDAD



- Anillas de seguridad 1/2"

R	Icon	Icon	Icon	Icon	Icon	Icon	g
169921	1	1/4"	10-14	E10-E18	5-10	T25-T0	2
169931	1	1/4"	15-36	E20-E24	12-19		2

1

2

3

4

5

6

7

8

9

10

11

12

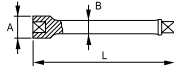
**IRIMO**

4. Vasos

**Accesorios 1/2"**

**ALARGADERA**

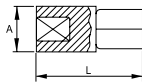
1/2"  
12.5 mm



- DIN16503
- ISO1174

R	Icon	L mm	A mm	B mm	g
169-03-1	1	75	25	16,5	139
169-01-1	1	125	25	16,5	274
169-02-1	1	250	25	16,5	484

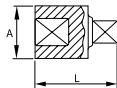
**AMPLIADOR**



- Aumentador de 1/2" a 3/4"
- DIN16503
- ISO1174

R	Icon	A mm	L mm	g
169-60-1	1	30	48	114

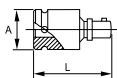
**REDUCTOR**



- Reductor de 1/2" a 3/8"
- DIN16503
- ISO1174
- Dadas las condiciones especiales de este producto, no está garantizado contra la rotura del cuadrado macho

R	Icon	A mm	L mm	g
169-65-1	1	25	38	129

**JUNTA CARDAN**



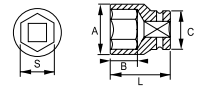
- DIN16503
- ISO1174

R	Icon	A mm	L mm	g
169-25-1	1	30	63	189

**Vasos impacto 3/4"**

**VASOS 3/4" HEX**

3/4"  
20 mm



- UNE 16507
- ISO 2725
- DIN 3129

R	Icon	S mm	A mm	B mm	C mm	L mm	g
173-17-2	1	17	30	21	44	51	339
173-18-2	1	18	32	21	44	51	339
173-19-2	1	19	33	21	44	51	349
173-21-2	1	21	35	21	44	51	359
173-22-2	1	22	36	21	44	51	359
173-23-2	1	23	37	21	44	51	369
173-24-2	1	24	38	21	44	51	379
173-27-2	1	27	41	21	44	51	399
173-28-2	1	28	42	23	44	51	409
173-29-2	1	29	45	23	44	51	409
173-30-2	1	30	46	23	44	51	439
173-32-2	1	32	48	27	44	57	469
173-33-2	1	33	50	27	44	57	489
173-34-2	1	34	51	27	44	57	509
173-36-2	1	36	53	27	44	57	519
173-38-2	1	38	56	27	44	57	559
173-41-2	1	41	59	28	44	58	659
173-46-2	1	46	66	30	44	62	709
173-50-2	1	50	71	32	54	65	839
173-55-2	1	55	77	37	54	70	1109
173-60-2	1	60	84	37	54	70	1200

**JUEGO EN CAJA METÁLICA**

173-01-5



R	Icon	pzs.	g	
173-01-5	1	8	24, 27, 29, 30, 32, 34, 36, 38 mm	4.000