

Content	32
---------	----

Chain drives

Chain wheel design	34-35
Hub type	35





pewag hoist chains

Chain drives



Chain drives

Chain wheel design

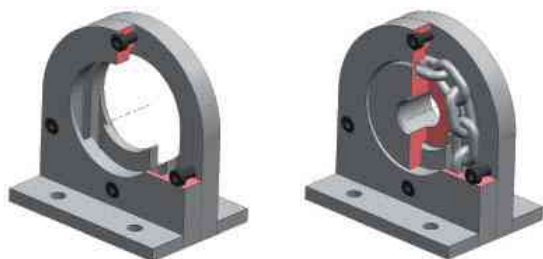
We support our customers with the dimensioning of the sprocket and the chain guide. We can deliver the sprockets and chain guides in machined and hardened version on request. Pocket wheels can be produced basically without support of the vertical chain links (Type TR, KR) or with support of the vertical chain links (Type TRP, KRP). For use with profile chains HEP or HEO-P the version with support of the vertical chain links is necessary.

Chain wheels and chain guides for hoist chains

- machined-finished with perfect fit for the chain
- case-hardened for chains HE and HEP
- through-hardened for chains HEO and HEO-P
- surface hardness adjusted to that of the chain

Standard version of chain guides

Hoist chain drives must be equipped with a chain guide which ensures that the chain is fed untwisted into the wheel, avoids the chain jumping off the wheel and ensures, that the chain is stripped off the wheel smoothly under full load. The chain has to be lubricated with a suitable chain-oil. There must remain a continuous interlink oil film during operation, in order to achieve the expected chain life time.



Description for chain guide: KF dn / z - pn of the selected chain ...

Order example

KF 5/6-15 for HE-chain WN G80 RAS 5x15

Standard version of chain wheels

Type TR pocket wheel

These wheels can be used with case hardened and through hardened round steel chains. To ensure a smooth interaction between chain and pocket wheel the wheel has to be adapted exactly to the chain dimensions. When using a pewag hoist chain we are pleased to offer you the construction of an optimal sprocket.



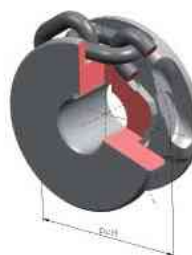
TR Round steel chain

Order example

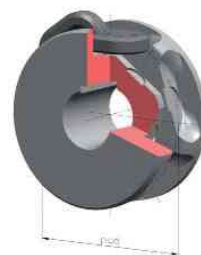
10 pcs. pocket wheels „TR 9/5-27“ for HE-chain WN G80 RAS 9x27, Hubtype A, drilling diameter d = 35 mm with Keyway.

Type TRP pocket wheel

These wheels can be used with case hardened and through hardened round steel chains. At these wheels also the vertical chain links are supported. That allows a better load sharing. To ensure a smooth interaction between chain and pocket wheel, the wheel has to be adapted exactly to the chain dimensions. When using a pewag hoist chain, we are pleased to offer you the construction of an optimal sprocket.



TRP Round steel chain



TRP Profile steel chain

Order example

10 pcs. pocket wheels „TRP 5/5-15“ for HEP-chain WN G80 RAS 5x15.

Chain drives



Type KR chain wheel

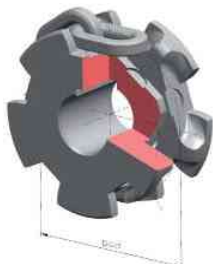
Compared to other pocket wheels the advantage of KR pocket wheels is that conveyed material or dirt can fall out of the side openings. Pocket wheels KR can be produced with or without support of the vertical chain links.



KR Round steel chain



KRP Round steel chain



KRP Profile steel chain

Order example

10 pcs. chain wheels „KRP 5/6-15“ for HEO-chain WN G100 5x15, Hubtype B, drilling diameter $d = 25$ mm without Keyway.

Type TR: Standard version

Type KR: For operation in dirty environments. The dirt can fall out between the tooth exemptions.

Type TRP, KRP: With interior polygone for high chain loads. The vertical chain link in the chain wheel series is supported additionally.

Designation

TR (KR, TRP, KRP) $dn / z - p$ for chaintype ...

dn = chain wheel diameter

z = No. of pockets

p = chain pitch

Pitch circle diameter, $pcd \sim 2x z \times p / TT$

Maximum drilling $d = pcd - 5,4 \times dn$

Minimum-width $b = 4,4 \times dn$ (for TR u. TRP)

Minimum-width $b = 3,4 \times dn$ (for KR u. KRP)

Shoulders diameter $a = 1,8 \times d$

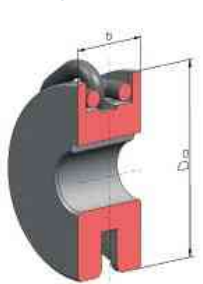
Hublength $e = b + dn$

Please indicate the desired dimensions of bore and hub!

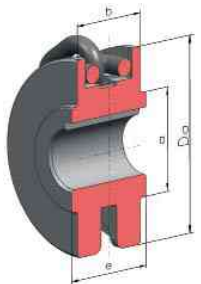
If no dimensions are indicated, standard hub design A and maximum bore size with the keyway will be delivered.

For profile steel chains HEP and HEO-P, design TRP od KRP (with internal polygone) is compulsory.

Hub type



Type A: plain



Type B: with shoulders



RODAVIGO, S.A.
RODAMIENTOS VIGO, S.A.

www.rodavigo.net

+34 986 288118
Servicio de Att. al Cliente



KA/11/00066

pewag austria GmbH

A-8605 Kapfenberg, Mariazeller Straße 143, Phone: +43 3862 2990-0, Fax: + 43 3862 2990-700, saleinfo@pewag.com, www.pewag.com

