



RODAVIGO, S.A.
RODAMIENTOS VIGO, S.A.

www.rodavigo.net

+34 986 288118
Servicio de Att. al Cliente

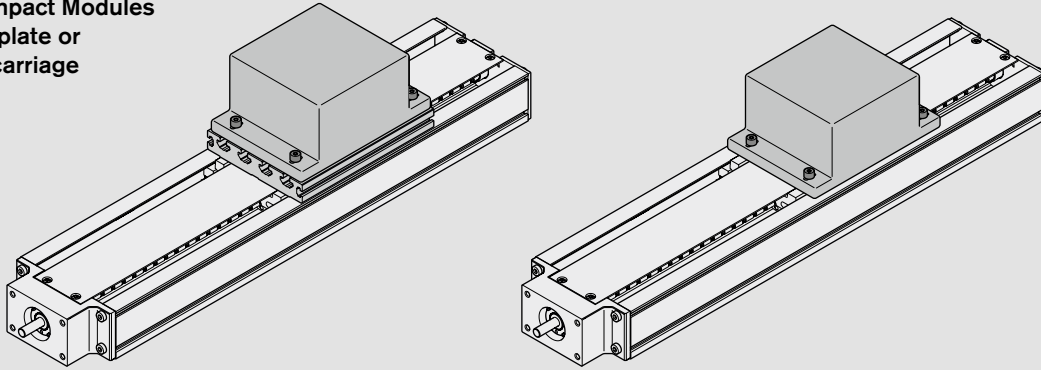
R310EN 2603 (2009.07) | eLINE Compact Modules

Bosch Rexroth AG 63

eLINE Compact Modules

Overview of Fastening and Attachment Options

Fastening a customer attachment to the eLINE Compact Modules
 – via connection plate or
 – directly to the carriage

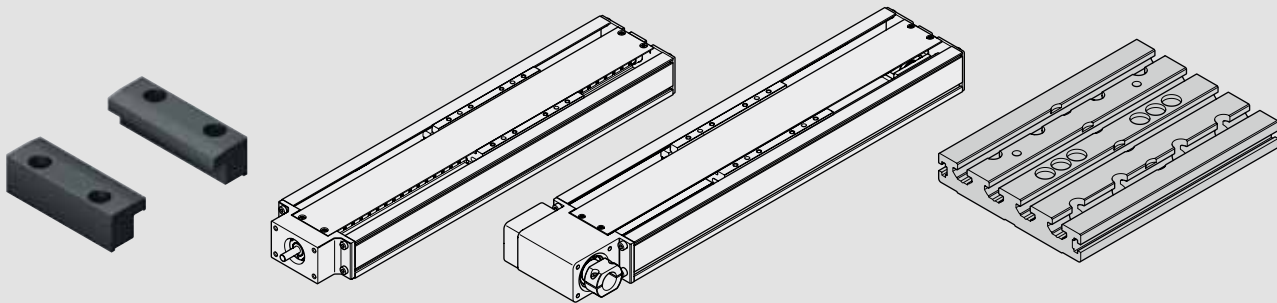


Fastening to carriage

Clamping fixtures

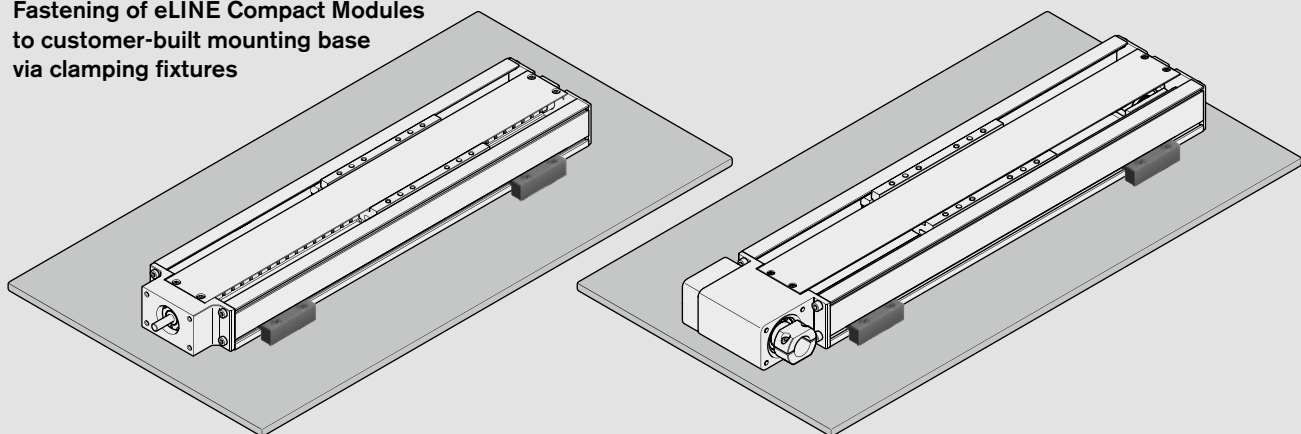
**eLINE Compact Modules
 eCKR or eCKK**

Connection plate



Fastening to frame

Fastening of eLINE Compact Modules to customer-built mounting base via clamping fixtures

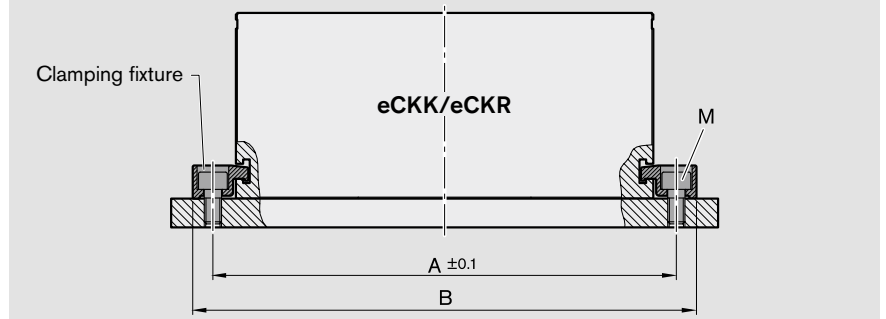


Mounting Accessories

Clamping fixtures

Fastening to customer-built mounting base

**⚠ Do not secure or support the eLINE Compact Module at the end enclosures!
The frame is the load-bearing part!**



Tightening torques for the fastening screws
at friction factor 0.125
Strength class 8.8

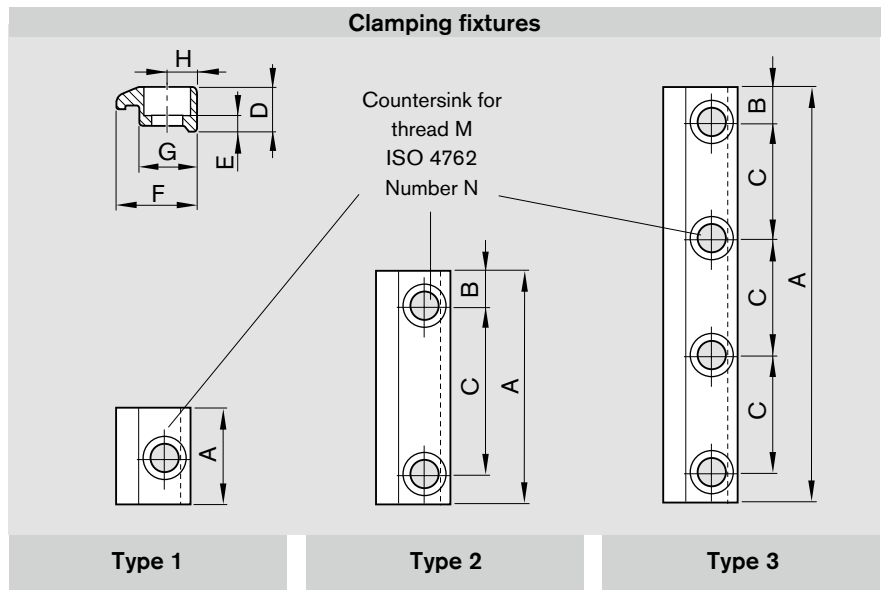
	8.8	M4	M5	M6
	Nm	2.7	5.5	9.5

	A (mm)	B (mm)	M
eCKx 90	102	112	M4
eCKx 110	126	140	M5, M6

Clamping fixtures

Recommended number of clamping fixtures:

- Type 1: 6 pieces per meter and side
- Type 2: 4 pieces per meter and side
- Type 3: 3 pieces per meter and side



	For thread	Type	Number of holes N	Dimensions (mm)								Part number
				A	B	C	D	E	F	G	H	
eCKx 90	M4	1	1	25	-	-	9	4.6	14.5	10.5	5	R0375 310 00
		3	4	87	6.0	25						R0375 310 02
		3	4	107	8.5	30						R0375 310 03
		2	2	72	11.0	50						R0375 310 32
		2	2	62	11.0	40						R0375 310 33
		3	4	77	8.5	20						R0375 310 26
eCKx 110	M5	3	4	107	8.5	30	11.5	4.8	19.3	14.0	7	R0375 410 02
		3	4	77	8.5	20						R0375 410 26
	M6	1	1	25	-	-	11.5	5.3	19.3	14.0	7	R0375 510 00
		3	4	142	11.0	40						R0375 510 02
		2	2	72	11.0	50						R0375 510 33
		2	2	62	11.0	40						R0375 510 34
		2	2	47	8.5	30						R0375 510 23

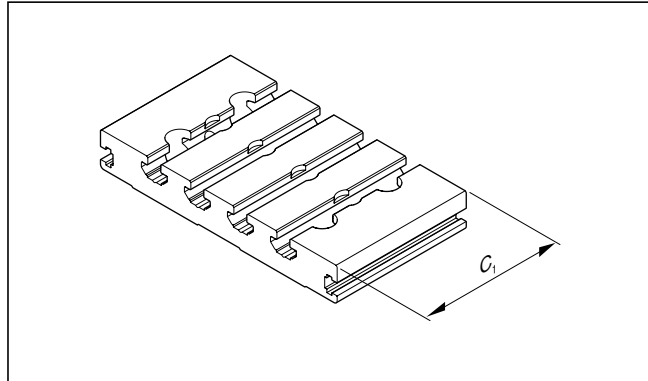
eLINE Compact Modules

Connection Plates

For the short carriage

Connection plates are fastened to the carriage with screws and pins.
(Screws and pins are included in the delivery.)

	Part number	Masse (kg)
eCKx 90	R0375 300 25	0,18
eCKx 110	R0375 400 25	0,23



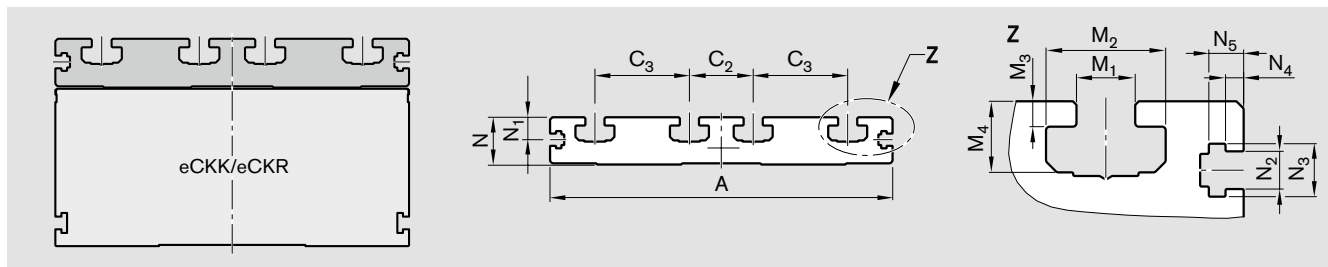
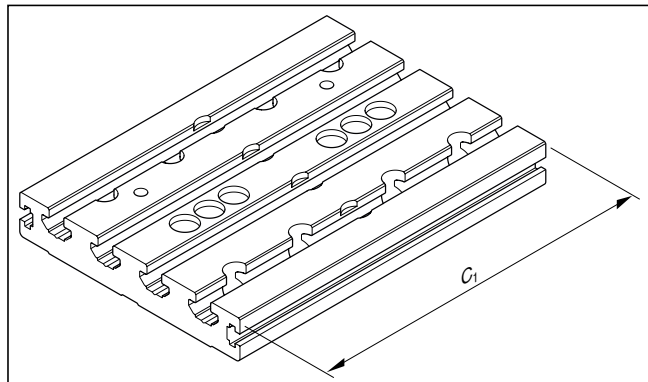
	Dimensions (mm)													
	A ¹⁾	C ₁	C ₂	C ₃	N	N ₁	N ₂	N ₃	N ₄	N ₅	M ₁	M ₂	M ₃	M ₄
eCKx 90	90	60	20	20	16	7.6	4.2	7.3	2	4.3	6	12	3.5	7.7
eCKx 110	110	60	20	20	16	9.5	5.2	7.3	2.5	4.8	6	12	3.5	7.7

1) Frame size

For the long carriage

Connection plates are fastened to the carriage with screws and pins.
(Screws and pins are included in the delivery.)

	Part number	Masse (kg)
eCKx 90	R0375 300 26	0,36
eCKx 110	R0375 400 26	0,58



	Dimensions (mm)													
	A ¹⁾	C ₁	C ₂	C ₃	N	N ₁	N ₂	N ₃	N ₄	N ₅	M ₁	M ₂	M ₃	M ₄
eCKx 90	90	125	20	20	16	7.6	4.2	7.3	2	4.3	6	12	3.5	7.7
eCKx 110	110	155	20	20	16	9.5	5.2	7.3	2.5	4.8	6	12	3.5	7.7

1) Frame size

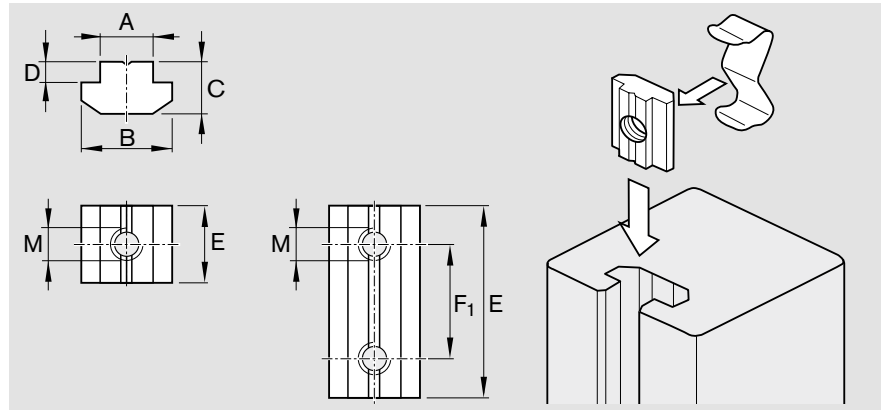
Sliding blocks and springs

For fastening attachments on the connection plate

The spring serves as a mounting and positioning aid.

Tightening torques for the fastening screws
at friction factor 0.125
Strength class 8.8

	8.8	M4	M5
	Nm	2.7	5.5

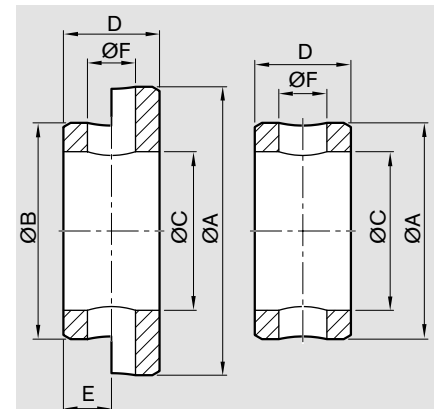
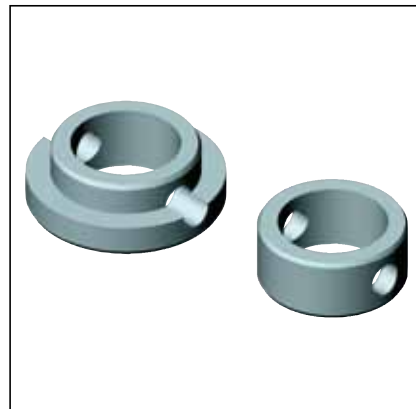


	For thread	Dimensions (mm)					Part number of sliding block	Part number of spring	
		A	B	C	D	E			F ₁
eCKx 90/110	M4	6	11.5	4	1	12	-	R3447 014 01	R3412 010 02
	M5					45	30	R0391 710 09	-
	M5					12	-	R3447 015 01	R3412 010 02

Centering rings

The centering rings serve as a positioning aid. They create positive-locking connections with good reproducibility.

Material: steel (corrosion-resistant)



Ø Size (mm)	Dimensions (mm)						Part number
	A k6	B k6	C ±0.1	D -0.2	E +0.2	ØF	
5	5	-	3.4	3.0	-	1.6	R0396 605 42
7	7	-	5.5	3.0	-	1.6	R0396 605 43
9	9	-	6.6	4.0	-	2.0	R0396 605 44
12	12	-	9.0	4.0	-	2.0	R0396 605 45
7 - 5	7	5	3.4	3.0	1.5	1.6	R0396 605 47
9 - 5	9	5	3.4	3.5	1.5	1.6	R0396 605 48
9 - 7	9	7	5.5	3.5	1.5	1.6	R0396 605 49
12 - 7	12	7	5.5	3.5	1.5	1.6	R0396 605 77
12 - 9	12	9	6.6	4.0	2.0	2.0	R0396 605 50

eLINE Compact Modules

Maintenance

Long-term maintenance-free operation is achievable due to the pre-lubricated eLINE Ball Rail Systems and the pre-lubricated Ball Screw. Initial lubrication is done in-factory prior to shipment. The service life of the initial lubrication applies to normal operating conditions.

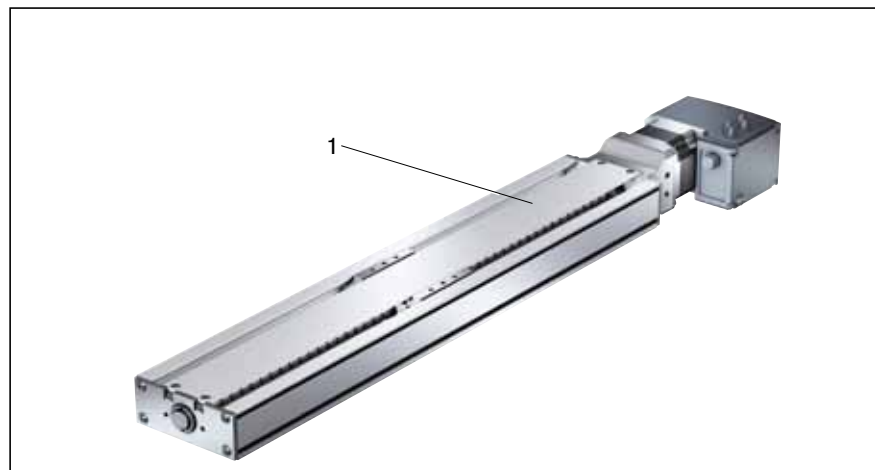
Normal operating conditions

Ambient temperature: 10 °C ... 40 °C
 Load: < 5% C
 Travel speed: < 1 m/s

For special operating conditions – e.g. special installation type, short stroke, or the presence of dust or solvents – the lubrication intervals must be adapted to the specific application.

Service life of initial lubrication

	Service life (km)	Grease	Part number (400 g cartridge)
eCKK	2000	Dynalub 510	R3416 037 00
eCKR	8000	Dynalub 510	R3416 037 00



The ball screw assembly and the ball rail systems can be relubricated in order to extend their service life.

- Remove the cover (1).
- Using a brush, apply a light film of grease (recommended: Dynalub 510) to the ball screw and to the running tracks on the sides of the guide rails.
- Move the carriage along the entire travel range several times.
- Use a cloth to remove the excess grease at the end positions.
- Fasten the cover (1).

Grease: Lithium soap grease KP2K (DIN 51825) with consistency class NLGI 2 (DIN 51818)

⚠ Do not use greases with solid lubricant components (such as graphite or MoS₂ additives)!



Order Example (Version 2)

Order data	Explanation
eLINE Compact Module (part number): R0363 300 00, 1770 mm	eLINE Compact Module eCKR 90, length = 1770 mm
Type = MG10	With gear reducer according to illustration MG10
Guideway = 01	Ball Rail System
Drive unit = 08	Drive end enclosure for attaching gear reducer
Carriage = 06	Carriage with length $L_{ca} = 125$ mm with connection plate
Motor attachment = 11	For motor MSK 030C, $i = 5$
Motor = 85	Motor MSK 030C with brake
Cover = 00	Without cover
1st switch = 21	Reed sensor
2nd switch = 21	Reed sensor
Mounting duct / cable duct = 25	Mounting duct, delivered as separate part
Socket-plug = 17	Socket-plug, delivered as separate part
Documentation = 10	Standard report

Please make sure that the selected combination is a permissible one (load capacities, moments, max. speeds, motor data, etc.)!



Inquiry / Order Form

Bosch Rexroth AG
Linear Motion and Assembly Technologies
D-97419 Schweinfurt, Germany

Telephone +49 9721 937-0

Telefax +49 9721 937-350
(direct)

Rexroth eLINE Compact Modules

To be completed by customer: Inquiry <input type="checkbox"/> / Order <input type="checkbox"/>		Single parts: (Part number):
eLINE Compact Module _____		
(Part number): R _____, length _____ mm		
Type =	<input type="text"/> <input type="text"/> <input type="text"/> <input type="text"/>	
Guideway =	<input type="text"/> 0 <input type="text"/> 1	
Drive unit =	<input type="text"/> <input type="text"/>	
Carriage =	<input type="text"/> <input type="text"/>	
Motor attachment =	<input type="text"/> <input type="text"/>	
Motor =	<input type="text"/> <input type="text"/>	
Cover =	<input type="text"/> <input type="text"/>	
1st switch =	<input type="text"/> <input type="text"/>	
2nd switch =	<input type="text"/> <input type="text"/>	
3rd switch =	<input type="text"/> <input type="text"/>	
Mounting duct / cable duct =	<input type="text"/> <input type="text"/>	
Socket-plug =	<input type="text"/> <input type="text"/>	
Documentation =	<input type="text"/> 1 <input type="text"/> 0	

Quantity _____ Order of: _____ pcs, _____ per month, _____ per year, per order, or _____
Comments: _____

From _____

Company: _____	Name: _____
Address: _____	Department: _____
_____	Telephone: _____
_____	Telefax: _____



Further information

- Project planning manuals
- Parameter files
- Function blocks
- Start-up software
- Instructions

can be found on the Internet at www.boschrexroth.com/eline_compactmodule

- 3D CAD generator, and "IndraDrive for Linear Motion Systems" and "ECODRIVE Cs" catalogs are also available on the Internet.



RODAVIGO, S.A.
RODAMIENTOS VIGO, S.A.

www.rodavigo.net

+34 986 288118
Servicio de Att. al Cliente

Rexroth
Bosch Group

Bosch Rexroth AG
Linear Motion and
Assembly Technologies
Ernst-Sachs-Straße 100
97424 Schweinfurt, Germany
Tel. +49 9721 937-0
Fax +49 9721 937-275
www.boschrexroth.com/dcl

Australia

Bosch Rexroth Pty. Ltd.
3 Valediction Road
Kings Park, NSW 2148, Sydney
Tel. +61 2 9831 7788
Fax +61 2 9831 5553

Great Britain

Bosch Rexroth Limited
Cromwell Road
St. Neots, Huntingdon
Cambs. PE19 2ES
Tel. +44 1480 223 298
Fax +44 1480 470 789

Canada

Bosch Rexroth Canada Corp.
3426 Mainway Drive
Burlington, Ontario L7M 1A8
Tel. +1 905 335-5511
Fax +1 905 335-4184

USA

Bosch Rexroth Corporation
14001 South Lakes Drive
Charlotte, NC 28273
Tel. +1 800 REXROTH
+1 800 739 7684
Fax +1 704 583 0523

Singapore

Bosch Rexroth Pte. Ltd.
15D Tuas Road
638520 Singapore
Tel. +65 6861 8733
Fax +65 6861 1825

Your sales partner

Subject to technical modifications

© Bosch Rexroth AG 2010
Printed in Germany
R310EN 2603 (2009.07)
EN • DCL/MKT2