

CARBON YARN PACKINGS

ML 4461 CARLON PACKING

Construction: Multi-Lok Braid

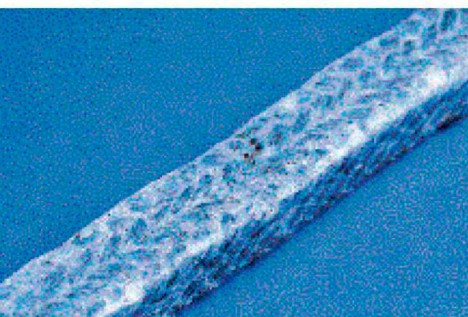
Features: ML 4461 Carlon is a carbon filament packing treated with PTFE to help prevent color contamination and carbon migration.

Treatment: Each strand of the carbon yarn is treated and impregnated with a PTFE suspensoid, totally encapsulating the packing to prevent carbon filaments migrating into the system.

Equipment: Pulp mill equipment, steaming vessels, top separators, refiners, outlet devices, blow pumps, stock pumps, agitators and valves.

Recommended For: Most chemical services, except strong oxidizers.

Limitations: Shaft speeds to 3000 FPM; temperatures to 600°F/345°C; pH range 0-14.



ML 4461

PTFE PACKINGS

ML 2235 PRELUBED PTFE YARN PACKING

Construction: Multi-Lok Braid

Features: Unlike other PTFE fluorocarbon filament packing, Sealing Equipment pre-lubricates the yarns to provide a softer, more flexible packing, with improved peripheral speed characteristics and exothermic properties.

Equipment: Any equipment where braided packing is commonly used.

Recommended For: The most severe services. All oxidizers and corrosives with one exception: molten alkali metals.

Limitations: Shaft speeds to 1200 FPM; pH range 0-14.

Remarks: No glazing at higher speed applications, inert, virtually indestructible lower coefficient of friction, thermal resistance to 500°F/260°C; and high compressive strength.



ML 2235

ML 2236 FDA: PRE-LUBED PTFE YARN PACKING

Construction: Multi-Lok Braid

Features: Pure PTFE filament lubricated with a proprietary lubricant that complies FDA requirements.

Equipment: Any equipment where braided packing is commonly used.

Recommended For: Applications in the food processing industry or where an FDA material is required.

Limitations: Shaft speeds to 1200 FPM; temperatures to 500°F/260°C; pH range 0-14.



ML 2236 FDA

PTFE PACKINGS

ML 2238 HIGH SPEED PTFE PACKING

Construction: Multi-Lok Braid

Features: A new improved PTFE yarn for high speed applications.

Equipment: Rotating pumps and agitators with peripheral shaft speeds too fast for other PTFE packing.

Recommended For: All chemicals and corrosives.

Limitations: Addition of new lubricants reduces the inertness slightly. Shaft speeds to 1885 FPM; temperatures to 500°F/260 °C; pH range 0-14.

Remarks: This specially treated PTFE packing operates where other PTFE filament glazes or hardens because of frictional heat from high speeds and thermal expansion.



ML 2238

VEGETABLE FIBER PACKINGS

2 VEGETABLE FIBER

Construction: Square Braid

Features: Vegetable fibers.

Treatment: Lubricated with a pure edible tallow and wax compound, ungraphited.

Equipment: Reciprocating and rotary shafts, plungers, hydraulic rams and stern tubes.

Recommended For: Brine, cold water and cold oil. High shaft speeds. High pressure rams and accumulators.

Limitations: Shaft speeds to 1885 FPM; temperatures to 220°F/104 °C; pH range 5-9.

2GR Same as STYLE 2 except graphited.



2

219 VEGETABLE FIBER/PTFE PACKING

Construction: Square Braid

Features: Highest quality vegetable fiber. All bark, coarse and short fibers have been removed.

Treatment: Impregnated with PTFE dispersion and a special break-in oil.

Equipment: Reciprocating and rotary shafts. Stern tube packing.

Recommended For: Brine, cold water and cold oil.

Limitations: Shaft speeds to 1885 FPM; temperatures to 220°F/104°C; pH range 5-9.

Remarks: PTFE impregnate acts as: (1) a surface leveler filling any surface voids. (2) a saturant to prevent wicking. (3) a lubricant to reduce friction and heat. (4) a protective shield around the flax fibers, preventing fluid penetration and fiber break down.



219