



VALVE SEALING SOLUTIONS

- PROCESS VALVES
- STEAM VALVES
- NUCLEAR SERVICE
- FUGITIVE EMISSIONS
- FIRE SAFE PACKING
- LOW FRICTION
- CARTRIDGE DESIGNS



GENERAL SERVICE PACKING

310 HIGH TEMPERATURE VALVE PACKING



310

Construction: Braided Inconel wire-inserted carbon yarn over mastic core.

Features: Inconel wire-inserted carbon yarn jacket over a core of high temperature fibers and graphite. A corrosion inhibitor is added to protect the valve.

Surface Treatment: Moly coated.

Recommended For: Steam, super heated steam, air petroleum products, hot gases.

Limitations: Recommended for valve service; maximum line temperature 1200°F/649°C; pressure to 2500 p.s.i.

ML 2250 PTFE/SYNTHETIC PACKING



ML 2250

Construction: Multi-Lok Braid

Features: Yarns are coated in PTFE suspensoid. This system of impregnation assures even distribution of the PTFE. The fibers are saturated and sealed with the PTFE particles, protecting the fibers from chemical action.

Surface Treatment: A surface coating of PTFE is applied after braiding. No oil or lubricant is added.

Equipment: Valves, flanges, expansion joints.

Recommended For: Valve service and static gasket applications, caustics and mild acids.

Remarks: Use wherever break-in oil is undesirable.

2250 Same as ML2250 except square braided.

KNIFE GATE PACKING

DS 6225 KNIFE GATE VALVE PACKING



DS 6225

Construction: Special longer braid gives flexibility to the packing required in knife gate valve applications.

Features: A blend of TEK-PRO yarn treated with PTFE throughout.

Equipment: Knife gate valves.

Recommended For: Valve service in slurry and fly ash sluice service.

Limitations: Temperature 550°F/288°C; pH range 2-12.

Remarks: The method of construction makes DS 6225 easier to install and provides a much tighter fit than other valve packing used in knife gate valves.

KNIFE GATE PACKING

RV 2225 PTFE/SYNTHETIC KNIFE GATE VALVE PACKING

Construction: Square Braid.

Features: Special braid design to ease installation in knife gate valves. Yarns are coated in PTFE suspenoid. This system of impregnation assures even distribution of the PTFE. The fibers are saturated and sealed with the PTFE particles, protecting the fibers from chemical action.

Equipment: Knife gate valves

Recommended For: Caustics, mild acids, difficult chemicals, gases, solvents, oils, general chemical plant applications.

Limitations: Temperatures to 500°F/260°C; pH 3-11.



RV 2225

GRAPHITE VALVE PACKING

ML911W

Construction: Multi-Lok Braid

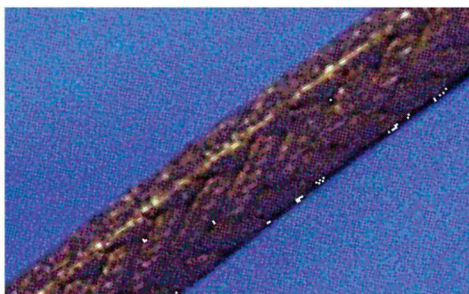
Features: This is ultra high purity flexible graphite packing has no resins or binders to bake out. Each strand of yarn is covered with a shield of Inconel wire.

Equipment: Valves

Recommended for: Excellent for high-pressure steam applications and where fugitive emissions are a concern.

Limitations: pH range 0-14; 1250°F/677°C in steam and pressures to 5000 psi.

Remarks: Available in 5 and 10 pound bulk spools, die formed rings, spiral-pak 3/16 to 1 inch standard



ML 911W

GRAPHITE RIBBON PACK

Construction: Flexible graphite Tape

Features: Graphite ribbon tape is self-lubricating and corrosion resistant. It is free from resins, fillers and binders. It is available in nuclear grade, which is 99.9% pure graphite, and industrial grade, which is 95% minimum graphite content. It is flexible and resilient and will not soften, carbonize, chalk, shrink, harden or cold flow. It dissipates heat, withstands high pressure and will operate leak-free.

Equipment: Valves.

Recommended For: Form in place valve stem packing.

Limitations: Temperature -400 to 3,000°F/1650°C in non-oxidizing atmospheres, -400 to 850°F/454°C in oxidizing atmospheres, 1200°F/649°C in steam, pH 0-14 except strong oxidizers.

Remarks: Available in crinkle form for gasketing. Comes with or without adhesive backing.



Ribbon Pack

GRAPHITE VALVE PACKING

ML2001 BRAIDED FLEXIBLE GRAPHITE

Construction: Multi-lok braid

Features: Pure homogenous graphite bonded to a fiberglass carrier for strength and thermal stability. It has no added lubricants or binders to cook out or become brittle. Passes API 607 Fire Test. Excellent fugitive emission packing.

Equipment: Pumps and valves.

Recommendations: Rotating shafts where high shaft speeds and thermal conductivity are required.

Limitations: pH range 0-14, temperatures 850°F/455°C in oxidizing atmospheres; 1200°F/649°C in steam.

Remarks: Available in bulk spool, spiral pack, cut and die-formed ring sets. Standard sizes 1/8 inch to 1 inch.

ML2001W has an Inconel wire insertion.

ML2001Z has an active (zinc) corrosion inhibitor.

ML2001P has a passive corrosion inhibitor.

STYLE 2003 GRAPHASEAL

Construction: Braided carbon with flexible graphite jacket.

Features: Its compressibility and excellent radial expansion enable sealing worn valve stems with minimum stem friction. Graphaseal passes API 589 and API 607 fire tests.

Equipment: Pumps & valves

Recommended for: Critical valves; rising stem applications; compliance valves in volatile organic and inorganic chemical service and high speed pumps.

Limitations: Temperature 1200°F/635°C in steam, 5000°F/2760°C in non-oxidizing atmospheres, pH range 0-14, service pressure 4000 psi.

Remarks: Available in 5 foot spiral or die formed rings. 1/8 inch and up cross sections in 1/16 increments.

G2 Cartridge 'The Eliminator'

Construction: A flexible graphite cartridge with built in end rings.

Features: The unique, patented* cartridge design reduces the costly labor to pack valves. It reduces the need to stock a variety of die formed rings since G2 has the complete seal in one easy to install cartridge.

Equipment: Valves

Recommended for: High temperature and high-pressure applications.

Limitations: pH range 0-14, temperature 3000°F in neutral or reducing atmosphere 850°F in oxidizing atmosphere.

Remarks: The G2 has passed fugitive emission testing and the American Petroleum Institute 607 fire test.

* US Patent Numbers 5050298, 5135240



ML 2001



ML 2003



G2



ML 2254 TREATED PTFE YARN PACKING

Construction: Multi-Lok Braid

Features: Style ML 2254 PTFE fibers are treated with a PTFE dispersion which fills and seals all interstices in the packing fibers. After braiding, a PTFE coating is applied and the packing is forced air dried. This packing will not wick.

Equipment: Valves, expansion joints, and static applications.

Recommended For: All severe chemical and corrosive services where an inert packing material is essential.

Limitations: Temperatures to 500°F/260°C, pH range 0-14. For static applications.

Remarks: Excellent valve stem packing for all chemicals and corrosives; inert to all fluids except for molten alkali metals.



ML 2254

ML 22540X-TREATED PTFE YARN PACKING

Construction: Multi-Lok Braid

Features: PTFE fibers with PTFE suspension. Contains no organic lubricant and is approved for oxygen service.

Recommended For: All services where an organic lubricant cannot be used.

Limitations: Temperatures to 550°F/260°C, pH range 0-14.



ML 22540X