

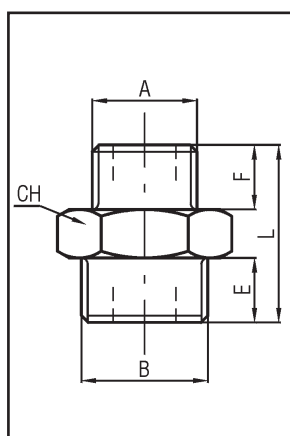
Standard fittings

series **RS**

TECHNICAL DATA

Material	Nickel plated brass
Thread	Metric, taper and parallel
Size	M5 ÷ 1
Fluid	Air
Max. temperature	150 °C
Max. pressure	60 bar

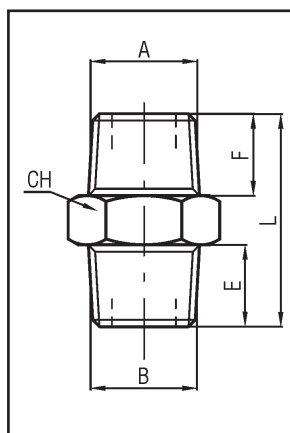
PARALLEL NIPPLE



TYPE	L	A	B	E	F	CH	q.ty
RS-N-M5	11,5	M5	M5	4	4	8	50
RS-N-M5/01	14,5	M5	G1/8	6	4	14	50
RS-N-01	16,5	G1/8	G1/8	6	6	14	50
RS-N-01/02	19	G1/8	G1/4	8	6	17	50
RS-N-01/03	20	G1/8	G3/8	9	6	19	50
RS-N-02	21	G1/4	G1/4	8	8	17	50
RS-N-02/03	22	G1/4	G3/8	9	8	19	50
RS-N-02/04	23,5	G1/4	G1/2	10	8	24	50
RS-N-03	23	G3/8	G3/8	9	9	19	50
RS-N-03/04	24,5	G3/8	G1/2	10	9	24	50
RS-N-04	25,5	G1/2	G1/2	10	10	24	25
RS-N-04/06	27,5	G1/2	G3/4	11	10	30	25
RS-N-06	28,5	G3/4	G3/4	11	11	30	20
RS-N-06/08	32	G3/4	G1	23	15	22	20

5

TAPER NIPPLE

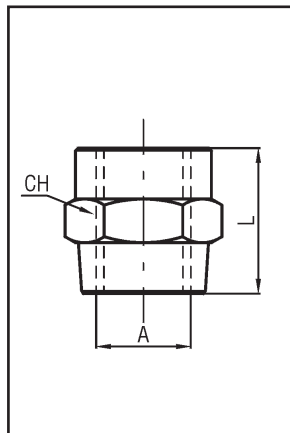


TYPE	L	A	B	E	F	CH	q.ty
RS1-N-01	20,5	R1/8	R1/8	8	8	12	50
RS1-N-01/02	24	R1/8	R1/4	11	8	14	50
RS1-N-01/03	24,5	R1/8	R3/8	11,5	8	17	50
RS1-N-02	27	R1/4	R1/4	11	11	14	50
RS1-N-02/03	27,5	R1/4	R3/8	11,5	11	17	50
RS1-N-02/04	30,5	R1/4	R1/2	14	11	22	50
RS1-N-03	28	R3/8	R3/8	11,5	11,5	17	50
RS1-N-03/04	31	R3/8	R1/2	14	11,5	22	50
RS1-N-04	33,5	R1/2	R1/2	14	14	22	50
RS1-N-04/06	37	R1/2	R3/4	16,5	14	27	25
RS1-N-06	39,5	R3/4	R3/4	16,5	16,5	27	20
RS1-N-06/08	42,5	R3/4	R1	19	16,5	34	10
RS1-N-08	45,5	R1	R1	19,0	19	34	10

series RS

Standard fittings

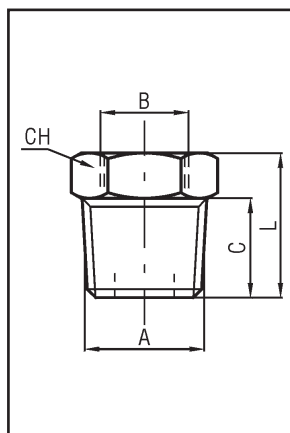
SLEEVE



TYPE	L	A	CH	q.ty
RS-M-M5	11	M5	8	50
RS-M-01	15	G1/8	14	50
RS-M-02	22	G1/4	17	50
RS-M-03	23	G3/8	22	50
RS-M-04	28	G1/2	26	25
RS-M-06	32	G3/4	32	20

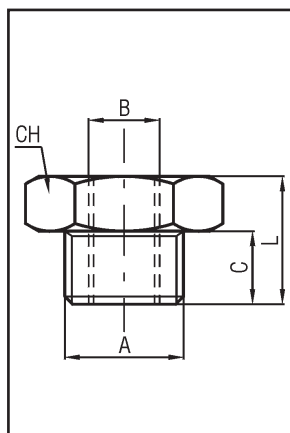
TAPER REDUCER

5



TYPE	L	A	B	C	CH	q.ty
RS1-RMF-02/01	16	R1/4	R1/8	11	14	50
RS1-RMF-03/01	16,5	R3/8	R1/8	11,5	17	50
RS1-RMF-04/01	19,5	R1/2	R1/8	14	22	25
RS1-RMF-03/02	16,5	R3/8	R1/4	11,5	17	50
RS1-RMF-04/02	19,5	R1/2	R1/4	14	22	50
RS1-RMF-04/03	19,5	R1/2	R3/8	14	22	50
RS1-RMF-06/04	23	R3/4	R1/2	16,5	27	20
RS1-RMF-06/03	23,5	R3/4	R3/8	16,5	27	20

PARALLEL REDUCER

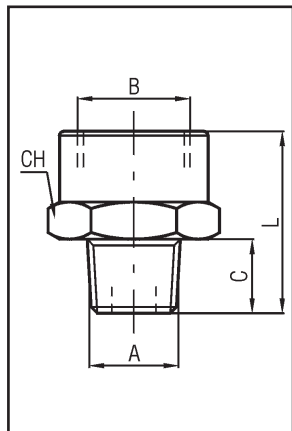


TYPE	L	A	B	C	CH	q.ty
RS-RMF-01/M5	10,5	G1/8	M5	6	14	50
RS-RMF-02/01	13	G1/4	G1/8	8	17	50
RS-RMF-03/01	14	G3/8	G1/8	9	19	50
RS-RMF-03/02	14	G3/8	G1/4	9	19	50
RS-RMF-04/01	15,5	G1/2	G1/8	10	24	25
RS-RMF-04/02	15,5	G1/2	G1/4	10	24	50
RS-RMF-04/03	15,5	G1/2	G3/8	10	24	50
RS-RMF-06/03	17,5	G3/4	G3/8	11	30	25
RS-RMF-06/04	17,5	G3/4	G1/2	11	30	20

Standard fittings

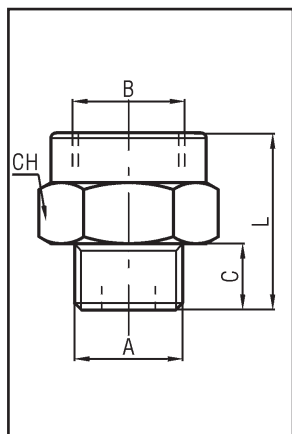
series **RS**

TAPER MALE/FEMALE EXTENSION



TYPE	L	A	B	C	CH	q.ty
RS1-PMF-01	18	R1/8	G1/8	8	14	50
RS1-PMF-01/02	21,5	R1/8	G1/4	8	17	50
RS1-PMF-01/03	22,5	R1/8	G3/8	8	22	50
RS1-PMF-02	24,5	R1/4	G1/4	11	17	50
RS1-PMF-02/03	25,5	R1/4	G3/8	11	22	50
RS1-PMF-02/04	29	R1/4	G1/2	11	24	50
RS1-PMF-03	26	R3/8	G3/8	11,5	22	50
RS1-PMF-03/04	29,5	R3/8	G1/2	11,5	24	50
RS1-PMF-04	32	R1/2	G1/2	14	26	25
RS1-PMF-04/06	35	R1/2	G3/4	14	32	20

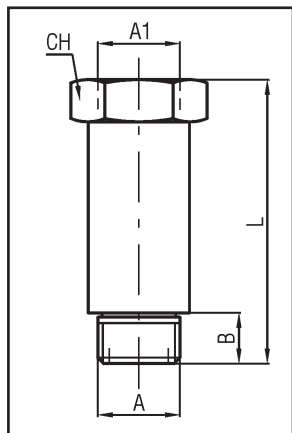
PARALLEL MALE/FEMALE EXTENSION



TYPE	L	A	B	C	CH	q.ty
RS-PMF-M5/01	14,5	M5	G1/8	4	14	50
RS-PMF-01	16	G1/8	G1/8	6	14	50
RS-PMF-01/02	19,5	G1/8	G1/4	6	17	50
RS-PMF-01/03	20,5	G1/8	G3/8	6	22	50
RS-PMF-02	21,5	G1/4	G1/4	8	17	50
RS-PMF-02/03	22,5	G1/4	G3/8	8	22	50
RS-PMF-02/04	26	G1/4	G1/2	8	24	50
RS-PMF-03	23,5	G3/8	G3/8	9	22	50
RS-PMF-03/04	27	G3/8	G1/2	9	24	50
RS-PMF-04	28	G1/2	G1/2	10	26	25

5

PARALLEL MALE/FEMALE LONG EXTENSION

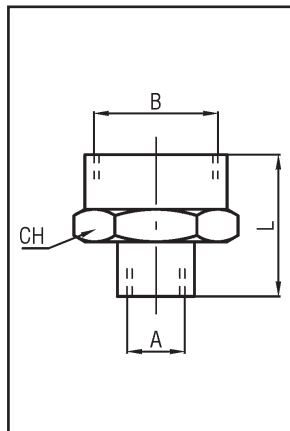
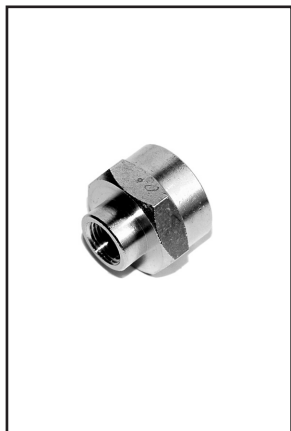


TYPE	L	A	A1	B	CH	q.ty
RS-PL-01A	22	G1/8	G1/8	6	14	50
RS-PL-01B	42	G1/8	G1/8	6	14	50
RS-PL-01C	51	G1/8	G1/8	6	14	50
RS-PL-02A	35	G1/4	G1/4	8	17	50
RS-PL-02B	51	G1/4	G1/4	8	17	50

series RS

Standard fittings

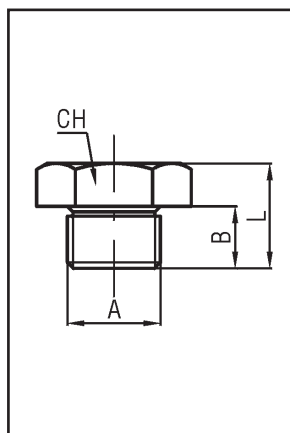
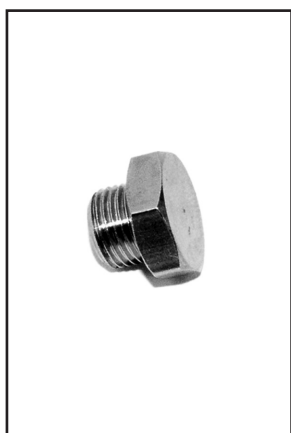
REDUCING SLEEVE



TYPE	L	A	B	CH	q.ty
RS-MR-M5/01	13,5	M5	G1/8	14	50
RS-MR-01/02	19	G1/8	G1/4	17	50
RS-MR-01/03	20	G1/8	G3/8	22	50
RS-MR-01/04	24	G1/8	G1/2	24	50
RS-MR-02/03	22,5	G1/4	G3/8	22	50
RS-MR-02/04	26	G1/4	G1/2	24	50
RS-MR-03/04	26	G3/8	G1/2	24	50
RS-MR-04/06	30	G1/2	G3/4	32	25

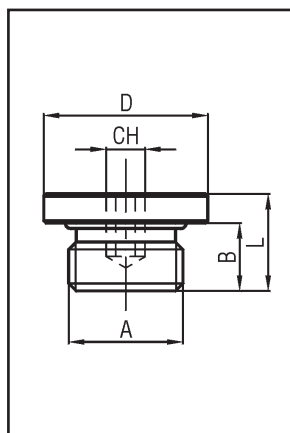
PARALLEL MALE PLUG

5



TYPE	L	A	B	CH	q.ty
RS-TC-M5	7	M5	4	8	50
RS-TC-01	10	G1/8	6,5	14	50
RS-TC-02	12,5	G1/4	8	17	50
RS-TC-03	13,5	G3/8	9	19	50
RS-TC-04	15,5	G1/2	10	24	50
RS-TC-06	16,5	G3/4	11	30	25
RS-TC-08	19	G1	13	38	10

PARALLEL MALE PLUG WITH O-RING

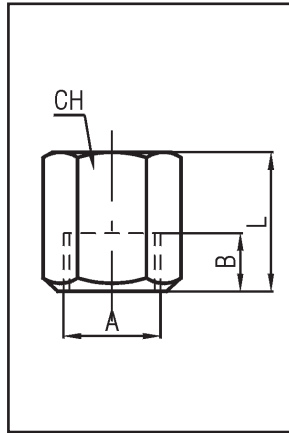


TYPE	L	A	B	ØD	CH	q.ty
RS-TMO-M5	7,2	M5	4,5	8	2,5	50
RS-TMO-01	9,5	G1/8	6,5	14	5	50
RS-TMO-02	11,5	G1/4	8	17	6	50
RS-TMO-03	12,5	G3/8	9	20	8	50
RS-TMO-04	14	G1/2	10	26	10	25

Standard fittings

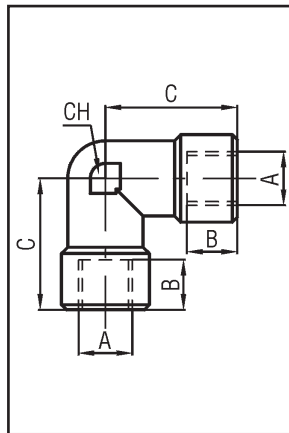
series **RS**

FEMALE PLUG



TYPE	L	A	B	CH	q.ty
RS-TFE-01	11,5	G1/8	8	14	50
RS-TFE-02	15	G1/4	11	17	50
RS-TFE-03	15,5	G3/8	11,5	20	50
RS-TFE-04	20	G1/2	14	24	25

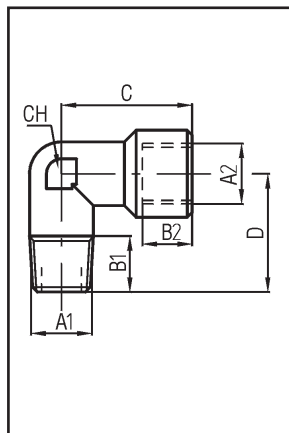
FEMALE ELBOW



TYPE	A	B	C	CH	q.ty
RS-GF-M5	M5	4	11	8	50
RS-GF-01	G1/8	8	21	10	50
RS-GF-02	G1/4	11	25,5	13	50
RS-GF-03	G3/8	11,5	28	17	50
RS-GF-04	G1/2	14	33,5	21	25
RS-GF-06	G3/4	16,5	36,5	25	20
RS-GF-08	G1	19	45	30	10

5

TAPER MALE/FEMALE ELBOW

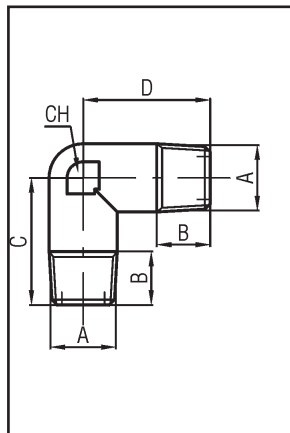
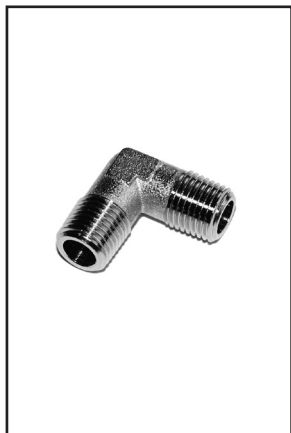


TYPE	A1	A2	B1	B2	C	CH	D	q.ty
RS-GMF-M5	M5	M5	4	5	11,5	9	11	50
RS-GMF-02/01	R1/4	G1/8	11	8	21,5	10	21	50
RS-GMF-01	R1/8	G1/8	8	8	18,5	10	21	50
RS-GMF-02	R1/4	G1/4	11	11	23,5	13	25,5	50
RS-GMF-03	R3/8	G3/8	11,5	11,5	26	17	28	50
RS-GMF-04	R1/2	G1/2	14	14	31	21	33,5	25
RS-GMF-06	R3/4	G3/4	16	16,5	33	25	36,5	20
RS-GMF-08	R1	G1	19	19	39	30	45	10

series RS

Standard fittings

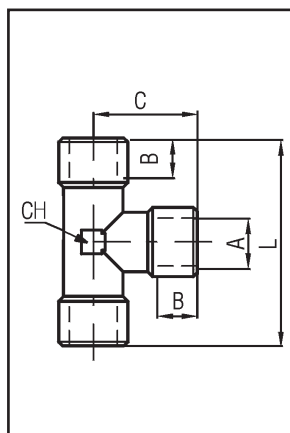
TAPER MALE ELBOW



TYPE	A	B1	C	D	CH	q.ty
RS-GM-M5	M5	4	11,5	11,5	8	50
RS-GM-01	R1/8	8	18,5	18,5	10	50
RS-GM-02/01	R1/4	11	21,5	19	10	25
RS-GM-02	R1/4	11	23,5	23,5	13	50
RS-GM-03	R3/8	11,5	26	26	17	50
RS-GM-04	R1/2	14	31	31	21	25
RS-GM-06	R3/4	16	33	33	25	20
RS-GM-08	R1	17	39	39	30	10

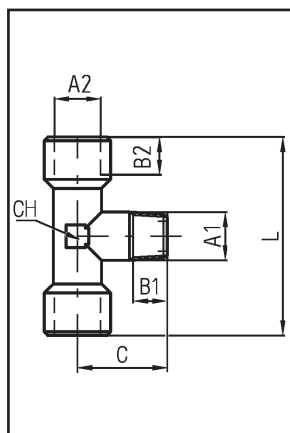
FEMALE TEE

5



TYPE	L	A	B	C	CH	q.ty
RS-TF-M5	22	M5	5	11	9	50
RS-TF-01	42	G1/8	8	21	10	50
RS-TF-02	51	G1/4	11	25,5	13	50
RS-TF-03	56	G3/8	11,5	28	17	50
RS-TF-04	67	G1/2	14	33,5	21	25
RS-TF-06	73	G3/4	16,5	36,5	25	20
RS-TF-08	90	G1	19	45	30	10

TAPER UNION MALE TEE

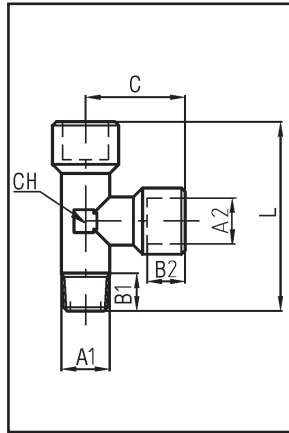


TYPE	L	A1	A2	B1	B2	C	CH	q.ty
RS-TMC-M5	22	M5	M5	4	5	11,5	9	50
RS-TMC-01	42	R1/8	G1/8	8	8	18,5	10	50
RS-TMC-02	51	R1/4	G1/4	11	11	23,5	13	50
RS-TMC-03	56	R3/8	G3/8	11,5	11,5	26	17	50
RS-TMC-04	67	R1/2	G1/2	14	14	31	21	25
RS-TMC-06	73	R3/4	G3/4	16	16,5	33	25	20
RS-TMC-08	90	R1	G2	17,5	19	39	30	10

Standard fittings

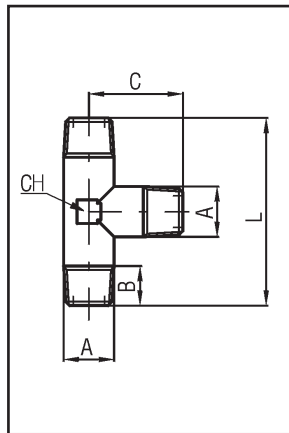
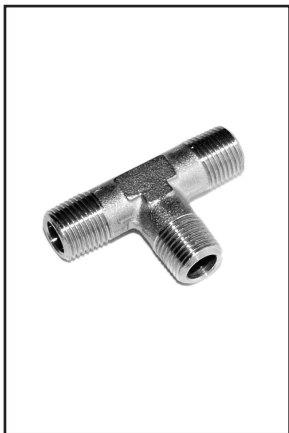
series **RS**

TAPER LATERAL MALE TEE



TYPE	L	A1	A2	B1	B2	C	CH	q.ty
RS-TML-M5	22,5	M5	M5	4	5	11	9	50
RS-TML-01	39,5	R1/8	G1/8	8	8	21	10	50
RS-TML-02	49	R1/4	G1/4	11	11	25,5	13	50
RS-TML-03	54	R3/8	G3/8	11,5	11,5	28	17	50
RS-TML-04	64,5	R1/2	G1/2	14	14	33,5	21	25
RS-TML-06	69,5	R3/4	G3/4	16,5	16,5	36,5	25	20
RS-TML-08	84	R1	G1	17,5	19	45	30	10

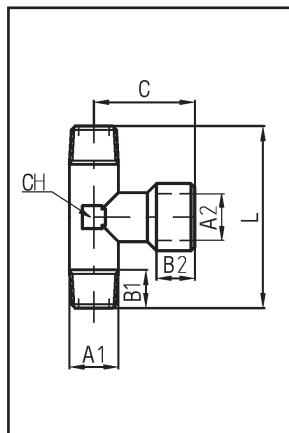
TAPER MALE TEE



TYPE	L	A	B	C	CH	q.ty
RS-TM-01	37	R1/8	8	18,5	10	50
RS-TM-02	47	R1/4	11	23,5	13	50
RS-TM-03	52	R3/8	11,5	26	17	50
RS-TM-04	62	R1/2	14	31	21	25
RS-TM-06	66,4	R3/4	16,2	33	25	20
RS-TM-08	78	R1	17,5	39	30	10

5

TAPER UNION FEMALE TEE

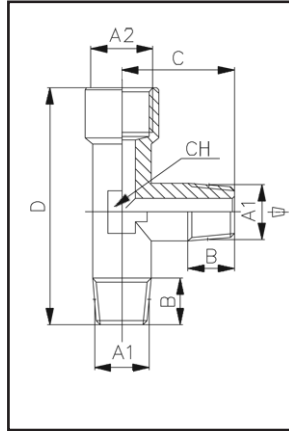


TYPE	L	A1	A2	B1	B2	C	CH	q.ty
RS-TCF-01	37	R1/8	G1/8	8	8	21	10	50
RS-TCF-02	47	R1/4	G1/4	11	11	25,5	13	50
RS-TCF-03	52	R3/8	G3/8	11,5	11,5	28	17	50
RS-TCF-04	62	R1/2	G1/2	14	14	33,5	21	25
RS-TCF-06	66,4	R3/4	G3/4	16,2	16,5	36,5	25	20
RS-TCF-08	78	R1	G1	17,5	19	45	30	10

series RS

Standard fittings

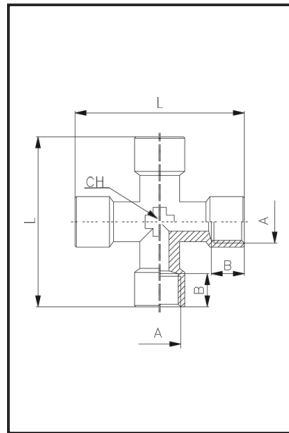
TAPER LATERAL FEMALE TEE



TYPE	A1	A2	B	C	D	CH	q.ty
RS-TLF-01	R1/8	G1/8	8	18,5	39,5	10	50
RS-TLF-02	R1/4	G1/4	11	23,5	49	13	50
RS-TLF-03	R3/8	G3/8	11,5	26	54	17	50
RS-TLF-04	R1/2	G1/2	14	31	64,5	21	25
RS-TLF-06	R3/4	G3/4	16	33	69,5	25	20
RS-TLF-08	R1	G1	17,5	39	84	30	10

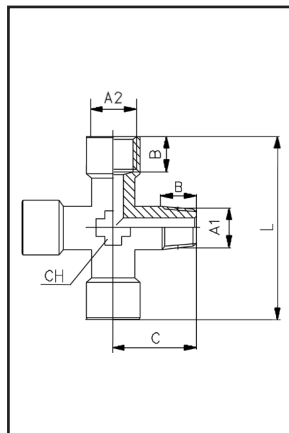
FEMALE CROSS

5



TYPE	L	A	B	CH	q.ty
RS-CF-01	42	G1/8	8	10	25
RS-CF-02	51	G1/4	11	13	25
RS-CF-03	56	G3/8	11,5	17	25
RS-CF-04	67	G1/2	14	21	20

TAPER M/F/F/F CROSS (M=MALE; F=FEMALE)

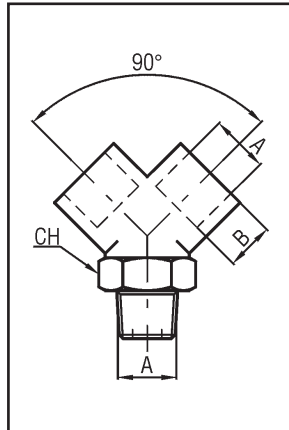
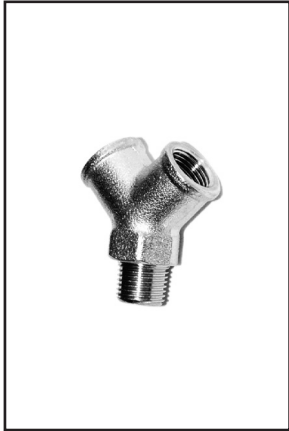


TYPE	L	A1	A2	B	C	CH	q.ty
RS-MFFF-01	42	R1/8	G1/8	8	18,5	10	25
RS-MFFF-02	49	R1/4	G1/4	11	23,5	13	25
RS-MFFF-03	56	R3/8	G3/8	11,5	26	17	25
RS-MFFF-04	67	R1/2	G1/2	14	31	21	20

Standard fittings

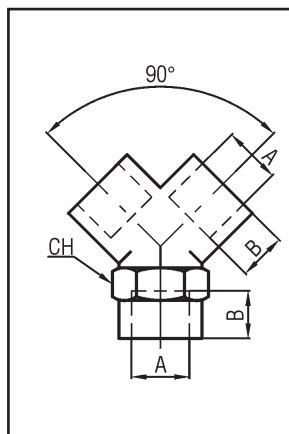
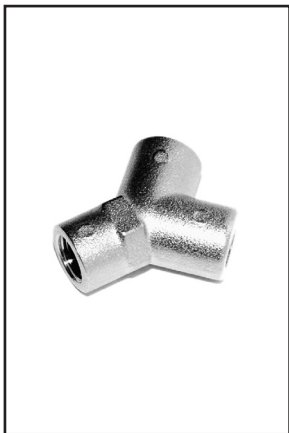
series **RS**

TAPER MALE Y CONNECTOR



TYPE	A	B	CH	q.ty
RS-YCM-01	R1/8	8	13	25
RS-YCM-02	R1/4	11	17	25
RS-YCM-03	R3/8	11,5	20	20
RS-YCM-04	R1/2	14	25	10

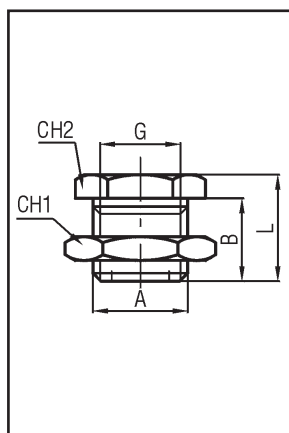
FEMALE Y CONNECTOR



TYPE	A	B	CH	q.ty
RS-YF-01	G1/8	8	13	25
RS-YF-02	G1/4	11	17	25
RS-YF-03	G3/8	11,5	20	20
RS-YF-04	G1/2	14	25	10

5

FEMALE BULKHEAD CONNECTOR

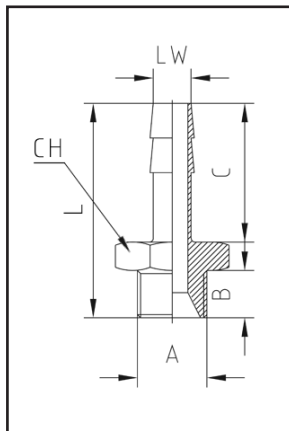


TYPE	L	A	B	G	CH1	CH2	q.ty
RS-PF-M5	14	M10x1	10,5	M5	14	14	50
RS-PF-01	18	M16x1,5	14	G1/8	22	19	50
RS-PF-02	25	M20x1,5	21	G1/4	27	24	50
RS-PF-03	26	M26x1,5	21	G3/8	32	30	25
RS-PF-04	33	M28x1,5	27	G1/2	36	32	20

series RS

Standard fittings

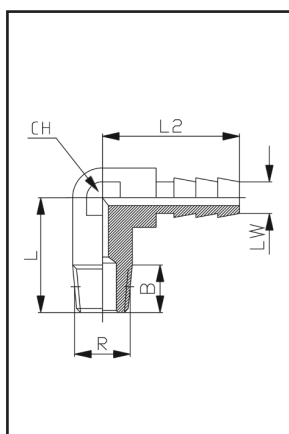
PARALLEL MALE HOSE ADAPTER



TYPE	L	A	B	C	LW	CH	q.ty
RS-PM-4,5/M5	22,5	M5	4	15	4,5	8	50
RS-PM-6/01	29,5	G1/8	6	19	6	12	50
RS-PM-6/02	32	G1/4	8	19	6	14	50
RS-PM-7/01	29,5	G1/8	6	19	7	12	50
RS-PM-7/02	32	G1/4	8	19	7	14	50
RS-PM-8/01	29,5	G1/8	6	19	8	12	50
RS-PM-8/02	32	G1/4	8	19	8	14	50
RS-PM-8/03	33	G3/8	9	19	8	19	50
RS-PM-9/01	29,5	G1/8	6	19	9	12	50
RS-PM-9/02	32	G1/4	8	19	9	14	50
RS-PM-9/03	33	G3/8	9	19	9	19	50
RS-PM-10/01	30,5	G1/8	6	20	10	12	50
RS-PM-10/02	33	G1/4	8	20	10	14	50
RS-PM-10/03	34	G3/8	9	20	10	19	50
RS-PM-12/02	33	G1/4	8	20	12	14	50
RS-PM-12/03	34	G3/8	9	20	12	19	50
RS-PM-12/04	35,5	G1/2	10	20	12	22	50
RS-PM-14/03	36	G3/8	9	22	14	19	50
RS-PM-14/04	37,5	G1/2	10	22	14	22	50
RS-PM-17/03	38	G3/8	9	24	17	19	50
RS-PM-17/04	39,5	G1/2	10	24	17	22	50
RS-PM-18/06	41,5	G3/4	11	24	18	30	20
RS-PM-20/04	39,5	G1/2	10	24	20	22	25
RS-PM-20/06	41,5	G3/4	11	24	20	30	20

5

TAPER ELBOW HOSE ADAPTER

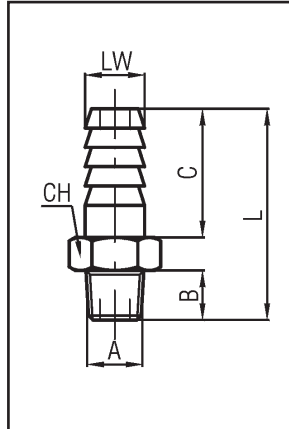


TYPE	L	L2	B	R	LW	CH	q.ty
RS-PG-6/01	18,5	22,5	8	R1/8	6	8	50
RS-PG-6/01A	23	22,5	8	R1/8	6	8	50
RS-PG-6/02	23	23	11	R1/4	6	9	50
RS-PG-7/01	18,5	22,5	8	R1/8	7	8	50
RS-PG-7/01A	23	22,5	8	R1/8	7	8	50
RS-PG-7/02	23	23	11	R1/4	7	9	50

Standard fittings

series **RS**

TAPER MALE HOSE ADAPTER



TYPE	L	A	B	C	LW	CH	q.ty
RS1-PM-6/01	31,5	R1/8	8	19	6	12	50
RS1-PM-6/02	35	R1/4	11	19	6	14	50
RS1-PM-7/01	31,5	R1/8	8	19	7	12	50
RS1-PM-7/02	35	R1/4	11	19	7	12	50
RS1-PM-8/01	31,5	R1/8	8	19	8	12	50
RS1-PM-8/02	35	R1/4	11	19	8	14	50
RS1-PM-9/01	31,5	R1/8	8	19	9	12	50
RS1-PM-9/02	35	R1/4	11	19	9	14	50
RS1-PM-9/03	35,5	R3/8	11,5	19	9	17	50
RS1-PM-9/04	38,5	R1/2	14	19	9	22	50
RS1-PM-10/01	32,5	R1/8	8	20	10	12	50
RS1-PM-10/02	36	R1/4	11	20	10	14	50
RS1-PM-10/03	36,5	R3/8	11,5	20	10	17	50
RS1-PM-10/04	39,5	R1/2	14	20	10	22	50
RS1-PM-12/02	36	R1/4	11	20	12	14	50
RS1-PM-12/03	36,5	R3/8	11,5	20	12	17	50
RS1-PM-12/04	39,5	R1/2	14	20	12	22	50
RS1-PM-14/03	38,5	R3/8	11,5	22	14	17	50
RS1-PM-14/04	41,5	R1/2	14	22	14	22	50
RS1-PM-16/03	38,5	R3/8	11,5	22	16	17	50
RS1-PM-16/04	41,5	R1/2	14	22	16	22	50
RS1-PM-16/06	45	R3/4	16,5	22	16	27	50
RS1-PM-17/03	40,5	R3/8	11,5	24	17	18	50
RS1-PM-17/04	43,5	R1/2	14	24	17	22	50
RS1-PM-18/03	40,5	R3/8	11,5	24	18	19	50
RS1-PM-18/04	43,5	R1/2	14	24	18	22	50
RS1-PM-18/06	47	R3/4	16,5	24	18	27	50
RS1-PM-20/03	41	R3/8	11,5	24	20	22	25
RS1-PM-20/04	43,5	R1/2	14	24	20	22	25
RS1-PM-20/06	46,5	R3/4	16,5	24	20	27	20
RS1-PM-25/06	53	R3/4	16,5	30	25	27	20
RS1-PM-25/08	56	R1	19	30	25	34	10

5