

series RO

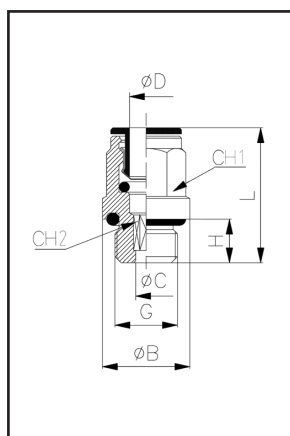
Push-in brass fittings

TECHNICAL DATA

Material	Body and thrust ring: nickel plated brass		
Thread	Metric, taper and parallel		
Seal	NBR rubber		
Clamp	Stainless steel AISI 316		
Size	M5 ÷ 1/2		
Fluid	Air		
Working temperature	-20 ÷ +80 °C		
Max. pressure	Fittings: 16 bar - Flow regulators: 10 bar		
Permissible tolerances for tubes	Polyamide PA11 - PA12		Polyurethane PU
	Outside tube Ø	Outside tube Ø tolerance	Outside tube Ø
	4 ÷ 8 mm	±0,1 mm	4 ÷ 8 mm
10 ÷ 14 mm	±0,1 mm	10 ÷ 14 mm	±0,15 mm

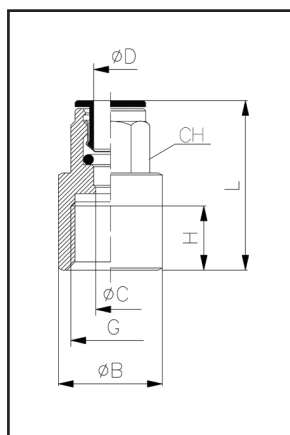
PARALLEL STRAIGHT MALE

5



TYPE	L	ØB	ØC	ØD	G	H	CH1	CH2	q.ty
RO-DM - 4/M5	20,5	9	2,6	4	M5	4	-	2,5	50
RO-DM - 4/M6	20,5	9	2,6	4	M6	5	-	2,5	50
RO-DM - 4/M7	22,2	10,5	3,6	4	M7	6	9	3,5	50
RO-DM - 4/M8	23,5	12	2,6	4	M8	7	10	2,5	50
RO-DM - 4/01	20	13,5	2,6	4	G1/8	6	9	2,5	50
RO-DM - 4/02	21	17	2,6	4	G1/4	8	9	2,5	50
RO-DM - 6/M5	22,5	10,5	2,6	6	M5	4	-	2,5	50
RO-DM - 6/M6	21,5	11	2,5	6	M6	4	-	2,5	50
RO-DM - 6/M7	24	10,5	3,6	6	M7	6	-	3,5	50
RO-DM - 6/M12	24	16	4,2	6	M12X1,25	8	11	4	50
RO-DM - 6/M12A	24	16	4,2	6	M12X1,5	8	11	4	50
RO-DM - 6/01	24	13,5	4,2	6	G1/8	6	11	4	50
RO-DM - 6/02	24	17	4,2	6	G1/4	8	11	4	50
RO-DM - 6/03	24	20	4,2	6	G3/8	9	13	4	50
RO-DM - 8/01	26,5	13	5,2	8	G1/8	6	13	5	50
RO-DM - 8/02	25	17	6,2	8	G1/4	8	13	6	50
RO-DM - 8/03	25	20	6,2	8	G3/8	9	13	6	50
RO-DM - 8/04	31	23	6,2	8	G1/2	11	13	6	25
RO-DM - 10/01	28	13,5	5,2	10	G1/8	6	16	5	50
RO-DM - 10/02	29,5	16	7,3	10	G1/4	8	16	7	50
RO-DM - 10/03	29,5	21	8,3	10	G3/8	9	16	8	50
RO-DM - 10/04	30	24	8,3	10	G1/2	11	16	8	25
RO-DM - 12/02	31,5	16	7,3	12	G1/4	8	18	7	50
RO-DM - 12/03	31	21	10,3	12	G3/8	9	18	10	25
RO-DM - 12/04	31	24	10,3	12	G1/2	11	18	10	25
RO-DM - 14/03	34	21	10,3	14	G3/8	9	21	10	25
RO-DM - 14/04	34	25	12	14	G1/2	11	21	12	25

PARALLEL STRAIGHT FEMALE

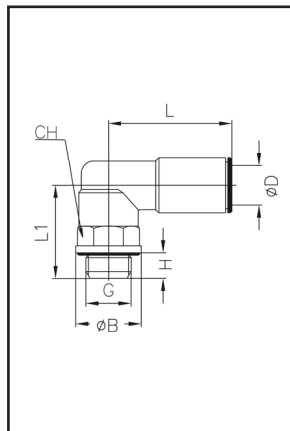


TYPE	L	ØB	ØC	ØD	G	H	CH	q.ty
RO-DF-4/M5	21,5	9	3	4	M5	5	9	50
RO-DF-4/01	26,5	12	3	4	G1/8	6,5	9	50
RO-DF-4/02	29,5	17	3	4	G1/4	10	9	50
RO-DF-6/01	27	12	5	6	G1/8	6,5	11	50
RO-DF-6/02	31	17	5	6	G1/4	10	11	50
RO-DF-8/01	28	12	7	8	G1/8	6,5	13	50
RO-DF-8/02	32	17	7	8	G1/4	10	13	50
RO-DF-10/02	32	16	9	10	G1/4	10	16	50
RO-DF-10/03	38	20	9	10	G3/8	13	20	25

Push-in brass fittings

series **RO**

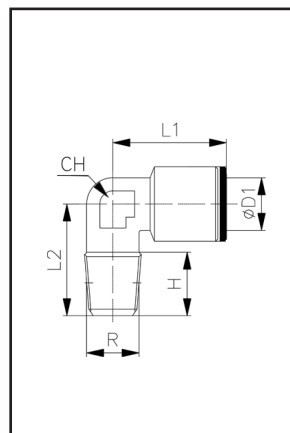
PARALLEL SWIVEL MALE ELBOW



TYPE	L	L1	ØB	ØD	G	H	CH	q.ty
RO-GM-4/M5	17,5	20	8	4	M5	4	8	50
RO-GM-4/M6	-	-	-	4	M6	-	-	50
RO-GM-4/M7	21,5	18	10,5	4	M7	6	11	50
RO-GM-4/01	17,5	18,5	12,8	4	G1/8	5,8	13	50
RO-GM-4/02	19	22,5	12,8	4	G1/4	8	16	50
RO-GM-6/M5	21	14,5	8	6	M5	4	9	50
RO-GM-6/M6	19,5	15,5	9	6	M6	5	9	50
RO-GM-6/M7	19,5	16,5	10	6	M7	6	9	50
RO-GM-6/M12	19	25	16	6	M12x1,25	8	13	50
RO-GM-6/M12A	19	25	16	6	M12x1,50	8	13	50
RO-GM-6/01	21	20	13	6	G1/8	6	13	50
RO-GM-6/02	21	24	16	6	G1/4	8	13	50
RO-GM-6/03	21	25,5	20	6	G3/8	9	13	25
RO-GM-8/01	24	20	13	8	G1/8	6	13	50
RO-GM-8/02	24	24	16	8	G1/4	8	13	50
RO-GM-8/03	24	25,5	20	8	G3/8	9	13	50
RO-GM-10/02	27	24	16	10	G1/4	8	16	50
RO-GM-10/03	27	28	20	10	G3/8	9	16	50
RO-GM-10/04	27	30	25	10	G1/2	11	16	25
RO-GM-12/02	28	27,5	16	12	G1/4	8	16	50
RO-GM-12/03	28	28,5	20	12	G3/8	9	20	25
RO-GM-12/04	28	33,5	25	12	G1/2	11	20	25
RO-GM-14/03	31	28,5	20	14	G3/8	9	20	25
RO-GM-14/04	31	30,5	25	14	G1/2	11	21	25

5

TAPER FIXED MALE ELBOW

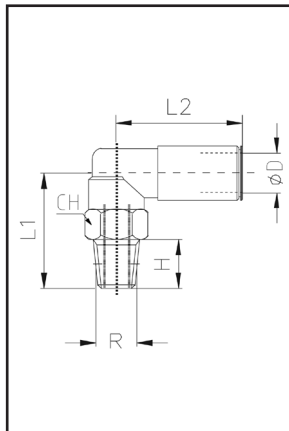


TYPE	L1	L2	ØD1	H	R	CH	q.ty
RO1-GM-4/01	18	16,5	4	8	R1/8	10	50
RO1-GM-5/01	18	16,5	5	9	R1/8	10	50
RO1-GM-6/01	22	22,5	6	8	R1/8	10	50
RO1-GM-6/02	23	18,5	6	11,5	R1/4	12	25
RO1-GM-8/01	24	22,5	8	9	R1/8	11	25
RO1-GM-8/02	24	22,5	8	11,5	R1/4	12	25
RO1-GM-10/02	24	22,5	10	11,5	R1/4	14	25

series RO

Push-in brass fittings

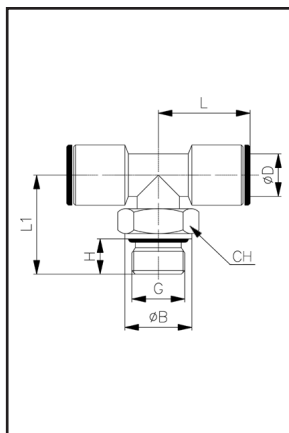
TAPER SWIVEL MALE ELBOW



TYPE	L1	L2	ØD	H	R	CH	q.ty
RO1-GMG-4/01	20,2	19	4	7	R1/8	13	50
RO1-GMG-4/02	25	19	4	11	R1/4	14	50
RO1-GMG-6/01	20,2	21	6	7	R1/8	13	50
RO1-GMG-6/02	25	21	6	11	R1/4	14	50
RO1-GMG-8/01	20,2	24	8	7	R1/8	13	50
RO1-GMG-8/02	25	24	8	11	R1/4	14	50
RO1-GMG-8/03	28	24	8	11	R3/8	18	50
RO1-GMG-10/02	26	27	10	11	R1/4	16	50
RO1-GMG-10/03	30	27	10	11	R3/8	16	50
RO1-GMG-12/03	32,5	28	12	11	R3/8	20	50
RO1-GMG-12/04	35,5	28	12	14	R1/2	22	25
RO1-GMG-14/03	32,5	31	14	11	R3/8	20	25
RO1-GMG-14/04	35,5	31	14	14	R1/2	22	25

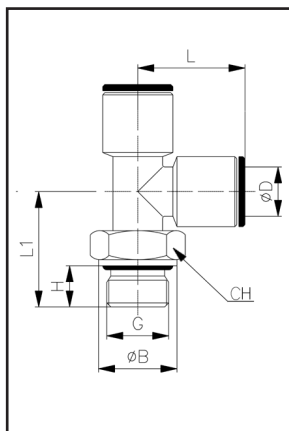
PARALLEL SWIVELLING CENTRAL MALE TEE

5



TYPE	L	L1	ØB	ØD	G	H	CH	q.ty
RO-TC-4/M5	17,5	16,5	8	4	M5	4	9	50
RO-TC-4/01	17,5	20	13	4	G1/8	6	13	50
RO-TC-4/02	19	24	16	4	G1/4	8	13	50
RO-TC-6/01	21	20	13	6	G1/8	6	13	50
RO-TC-6/02	21	24	16	6	G1/4	8	13	50
RO-TC-8/01	23	20	13	8	G1/8	6	13	50
RO-TC-8/02	23	24	16	8	G1/4	8	13	50
RO-TC-8/03	25,5	25,5	20	8	G3/8	9	13	50
RO-TC-10/02	25,5	28	16	10	G1/4	8	16	50
RO-TC-10/03	25,5	29	12	10	G3/8	9	16	50
RO-TC-12/02	27	30,5	16	12	G1/4	8	16	50
RO-TC-12/03	27	28,5	20	12	G3/8	9	20	25
RO-TC-14/04	31	33,5	25	14	G1/2	11	20	25

PARALLEL SWIVELLING LATERAL MALE TEE

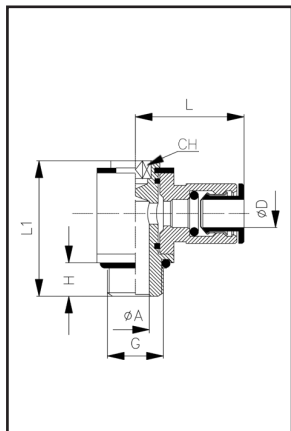


TYPE	L	L1	ØB	ØD	G	H	CH	q.ty
RO-TL-4/M5	17,5	16,5	8	4	M5	4	9	50
RO-TL-4/01	17,5	20	13	4	G1/8	6	13	50
RO-TL-4/02	19	24	13	4	G1/4	8	13	50
RO-TL-6/01	19,5	20	13	6	G1/8	6	13	50
RO-TL-6/02	21	24	16	6	G1/4	8	13	50
RO-TL-8/01	23	20	13	8	G1/8	6	13	50
RO-TL-8/02	23	24	16	8	G1/4	8	13	50
RO-TL-8/03	25,5	25,5	20	8	G3/8	9	13	50
RO-TL-10/02	25,5	24	16	10	G1/4	8	16	50
RO-TL-10/03	25,5	28	20	10	G3/8	9	16	50
RO-TL-12/02	27	30,5	16	12	G1/4	8	16	50
RO-TL-12/03	21	28,5	20	12	G3/8	9	20	25
RO-TL-14/04	31	33,5	25	14	G1/2	11	20	25

Push-in brass fittings

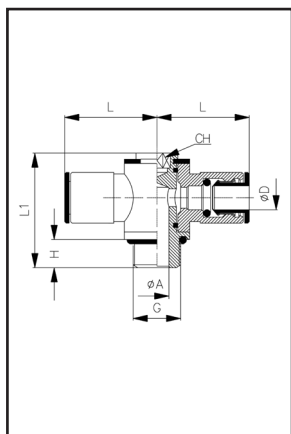
series **RO**

COMPLETE PARALLEL SINGLE BANJO, ROTATING 360°



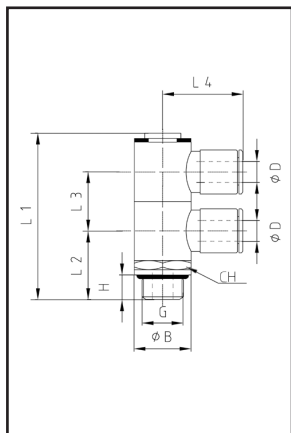
TYPE	L	L1	ØA	ØD	G	H	CH	q.ty
RO-BSR-4/M5	18,5	17	2	4	M5	4	2	50
RO-BSR-4/01	21	25	5,5	4	G1/8	6	3	50
RO-BSR-6/01	23,5	25	5,5	6	G1/8	6	3	50
RO-BSR-8/01	24,5	25	5,5	8	G1/8	6	3	50
RO-BSR-6/02	24,5	29,3	7,8	6	G1/4	8	4	50
RO-BSR-8/02	26	29,3	7,8	8	G1/4	8	4	25
RO-BSR-10/02	27	29,3	7,8	10	G1/4	8	4	25
RO-BSR-8/03	29	34	10	8	G3/8	9	5	25
RO-BSR-10/03	29	34	10	10	G3/8	9	5	25
RO-BSR-12/02	29,3	28	7,8	12	G1/4	8	4	25
RO-BSR-12/03	29	34	10	12	G3/8	9	5	25

COMPLETE PARALLEL DOUBLE BANJO, ROTATING 360°



TYPE	L	L1	ØA	ØD	G	H	CH	q.ty
RO-BDR-4/M5	18,5	17	2	4	M5	4	2	50
RO-BDR-4/01	21	25	5,5	4	G1/8	6	3	50
RO-BDR-5/M5	19,5	17	2	5	M5	4	2	50
RO-BDR-5/01	22,5	25	5,5	5	G1/8	6	3	50
RO-BDR-6/01	23	25	5,5	6	G1/8	6	3	50
RO-BDR-8/01	24	25	5,5	8	G1/8	6	3	50
RO-BDR-6/02	24	29,3	7,8	6	G1/4	8	4	50
RO-BDR-8/02	26	29,3	7,8	8	G1/4	8	4	50
RO-BDR-10/02	27	29,3	7,8	10	G1/4	8	4	25
RO-BDR-8/03	28	34	10	8	10	9	5	25
RO-BDR-10/03	29	34	10	10	10	9	5	25
RO-BDR-12/03	30	34	10	12	10	9	5	25

COMPLETE PARALLEL TWO SINGLE BANJO, ROTATING 360°



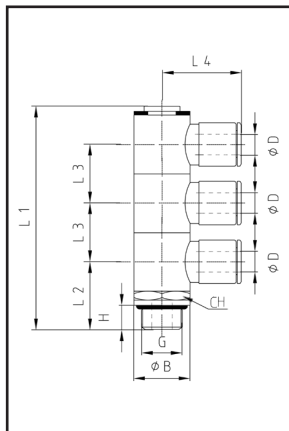
TYPE	L1	L2	L3	L4	ØB	ØD	G	H	CH	q.ty
RO-2BSR-4/01	44	19	15	21	13	4	G1/8	6	14	25
RO-2BSR-6/01	44	19	15	23	13	6	G1/8	6	14	25
RO-2BSR-8/01	44	19	15	24	13	8	G1/8	6	14	25
RO-2BSR-6/02	50	22,5	17	24	17	6	G1/4	8	17	25
RO-2BSR-8/02	50	22,5	17	26	17	8	G1/4	8	17	10
RO-2BSR-10/02	50	22,5	17	27	17	10	G1/4	8	17	10
RO-2BSR-12/02	50	22,5	17	28	17	12	G1/4	8	17	10

5

series RO

Push-in brass fittings

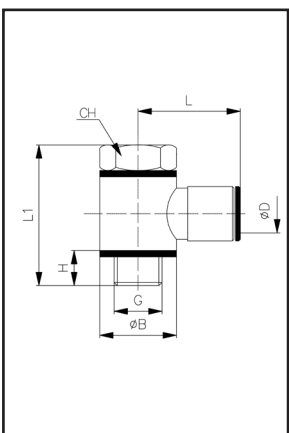
COMPLETE PARALLEL THREE SINGLE BANJO, ROTATING 360°



TYPE	L1	L2	L3	L4	ØB	ØD	G	H	CH	q.ty
RO-3BSR-4/01	59	19	15	21	13	4	G1/8	6	14	25
RO-3BSR-6/01	59	19	15	23	13	6	G1/8	6	14	25
RO-3BSR-8/01	59	19	15	24	13	8	G1/8	6	14	25
RO-3BSR-6/02	67	21,5	17	24	17	6	G1/4	8	17	25
RO-3BSR-8/02	67	21,5	17	26	17	8	G1/4	8	17	10
RO-3BSR-10/02	67	21,5	17	27	17	10	G1/4	8	17	10
RO-3BSR-12/02	67	21,5	17	28	17	12	G1/4	8	17	10

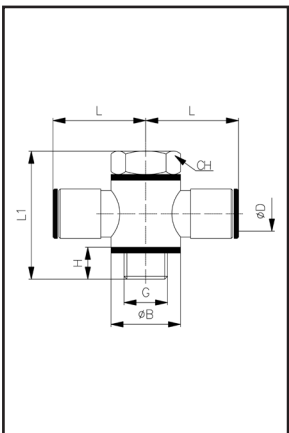
COMPLETE PARALLEL SINGLE SWIVEL BANJO

5



TYPE	L	L1	ØB	ØD	G	H	CH	q.ty
RO-BS-4/M5	18,5	17,5	7	4	M5	4,5	8	50
RO-BS-4/M6	21	18	14	4	M6	4,5	9	50
RO-BS-4/01	21	28	14	4	G1/8	7,5	14	50
RO-BS-6/M5	19	17,5	10	6	M5	4,5	8	50
RO-BS-6/01	22,5	28	14	6	G1/8	7,5	14	50
RO-BS-6/02	24	33	18	6	G1/4	9	17	50
RO-BS-8/01	24,5	28	14	8	G1/8	7,5	14	25
RO-BS-8/02	26	33	18	8	G1/4	9	17	25
RO-BS-8/03	28	37	21	8	G3/8	10	22	25
RO-BS-10/02	27	33	18	10	G1/4	9	17	25
RO-BS-10/03	29	37	21	10	G3/8	10	22	25
RO-BS-12/02	28	33	18	12	G1/4	9	17	25
RO-BS-12/03	30	37	21	12	G3/8	10	22	10

COMPLETE PARALLEL DOUBLE SWIVEL BANJO

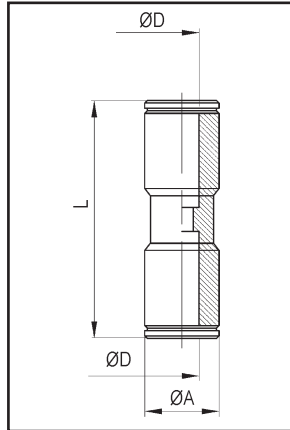


TYPE	L	L1	ØB	ØD	G	H	CH	q.ty
RO-BD-4/M5	18,5	17,5	7	4	M5	4,5	8	50
RO-BD-4/01	21	28	14	4	G1/8	7,5	14	50
RO-BD-6/01	22,5	28	14	6	G1/8	7,5	14	50
RO-BD-6/02	24	33	18	6	G1/4	9	17	50
RO-BD-8/01	24,5	28	14	8	G1/8	7,5	14	25
RO-BD-8/02	26	33	18	8	G1/4	9	17	25
RO-BD-8/03	28	37	21	8	G3/8	10	22	25
RO-BD-10/02	27	33	18	10	G1/4	9	17	25
RO-BD-10/03	29	37	21	10	G3/8	9	22	25
RO-BD-12/03	30	37	21	12	G3/8	9	22	10

Push-in brass fittings

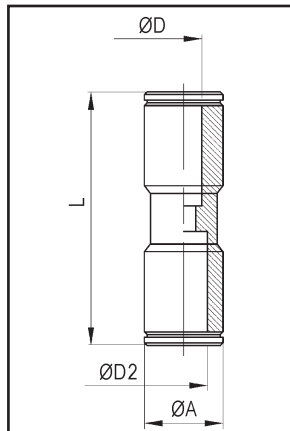
series **RO**

UNION STRAIGHT



TYPE	L	ØA	ØD	q.ty
RO-DI-4	30	9	4	50
RO-DI-6	31,5	11	6	50
RO-DI-8	36	13	8	50
RO-DI-10	37	15	10	50
RO-DI-12	40,5	17	12	50
RO-DI-14	45	20	14	50

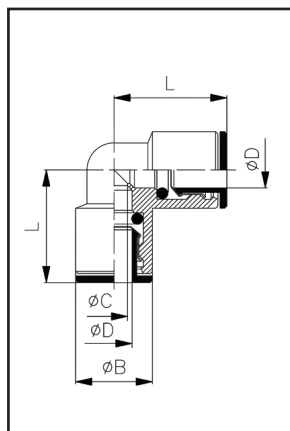
REDUCED UNION STRAIGHT



TYPE	L	ØA	ØD	ØD2	q.ty
RO-DIR-6/4	33,5	11	4	6	50
RO-DIR-8/6	37	13	6	8	50
RO-DIR-10/8	39,5	16	8	10	50
RO-DIR-12/10	40	20	10	12	50
RO-DIR-14/12	43	22	12	14	50

5

UNION ELBOW

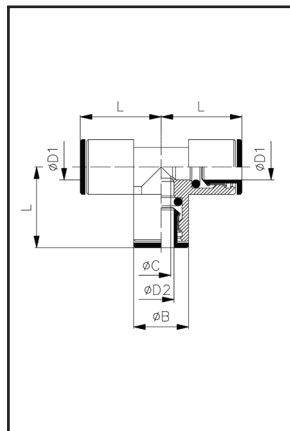


TYPE	L	ØB	ØC	ØD	q.ty
RO-GI-4	17,5	9	3	4	50
RO-GI-6	19,5	11	5	6	50
RO-GI-8	23	13	7	8	50
RO-GI-10	25	15	8	10	50
RO-GI-12	27	17	10	12	25
RO-GI-14	30	20	12	14	25

series RO

Push-in brass fittings

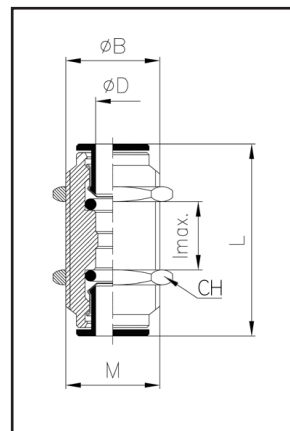
UNION TEE



TYPE	L	ØB	ØC	ØD1	ØD2	q.ty
RO-TI-4	17,5	9	3	4	4	50
RO-TI-6	19,5	11	5	6	6	50
RO-TI-6/4	19,5	11	3	6	4	50
RO-TI-8	23	13	7	8	8	50
RO-TI-8/6	23	13	5	8	6	50
RO-TI-10	25	15	8	10	10	20
RO-TI-10/8	25	15	7	10	8	20
RO-TI-12	27	17	10	12	12	20
RO-TI-14	30	20	12	14	14	20

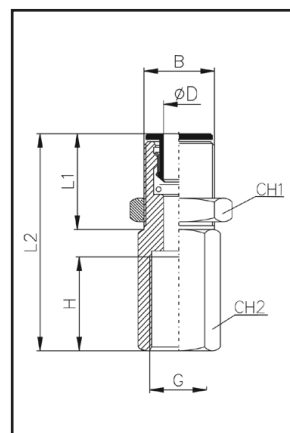
BULKHEAD CONNECTOR

5



TYPE	L	ØB	ØD	lmax	M	CH	q.ty
RO-P-4	32	10	4	8	M10x1	13	50
RO-P-6	33,5	14	6	8	M14x1	17	50
RO-P-8	37	16	8	10	M16x1	18	50
RO-P-10	39,5	17	10	12	M17x1	20	25
RO-P-12	42	20	12	17	M20x1	24	25
RO-P-14	45	22	14	18	M22x1	25	25

FEMALE BULKHEAD CONNECTOR

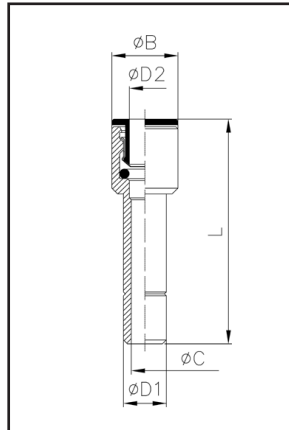


TYPE	L1	L2	B	ØD	G	H	CH1	CH2	q.ty
RO-PF-4/01	13	25	M10x1	4	G1/8	6,5	13	15	50
RO-PF-6/01	13	27	M14x1	6	G1/8	6,5	17	17	50
RO-PF-6/02	13	21	M14x1	6	G1/4	10,5	17	17	50
RO-PF-8/01	13	28	M13x1	8	G1/8	6,5	19	17	50
RO-PF-8/02	13	33	M13x1	8	G1/4	10,5	19	17	50

Push-in brass fittings

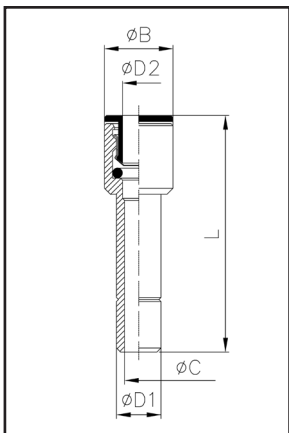
series **RO**

REDUCER



TYPE	L	ϕB	ϕC	$\phi D1$	$\phi D2$	q.ty
RO-R-6/4	28,5	9	3	6	4	50
RO-R-6/5	35,5	9,5	4	6	5	50
RO-R-8/4	31	9	3	8	4	50
RO-R-8/5	32,5	9,5	4	8	5	50
RO-R-8/6	33,5	10,5	5	8	6	50
RO-R-10/6	36,5	10,5	5	10	6	50
RO-R-10/8	38	13	7	10	8	50
RO-R-12/4	39,5	13	3	12	4	25
RO-R-12/6	39,5	13	5	12	6	25
RO-R-12/8	38,5	13	7	12	8	25
RO-R-12/10	41	15	9	12	10	25
RO-R-14/4	43	15	3	14	4	25
RO-R-14/6	43	15	5	14	6	25
RO-R-14/8	43	15	7	14	8	25
RO-R-14/10	43	15	9	14	10	25
RO-R-14/12	43	17	11	14	12	25

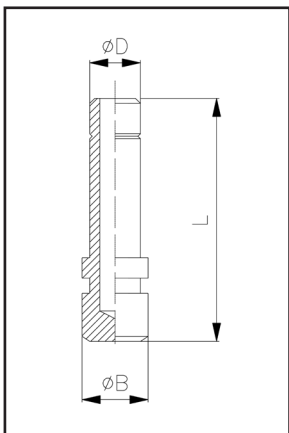
INCREASER



TYPE	L	ϕB	ϕC	$\phi D1$	$\phi D2$	q.ty
RO-E-4/6	33,5	10,5	2	4	6	25
RO-E-6/8	38	13	4	6	8	25

5

PLUG

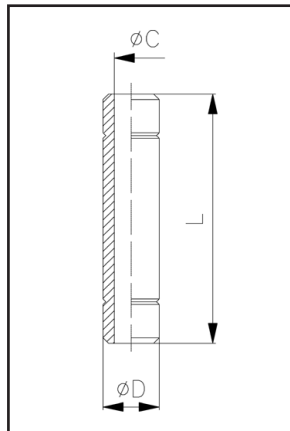


TYPE	L	ϕB	ϕD	q.ty
RO-T-4	25,5	5	4	50
RO-T-6	27,5	7	6	50
RO-T-8	30	9	8	50
RO-T-10	35	11	10	25
RO-T-12	37	13	12	25
RO-T-14	39,5	15	14	25

series RO

Push-in brass fittings

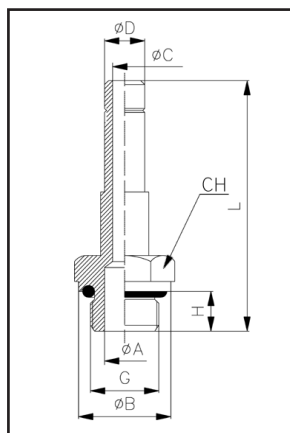
UNION CONNECTOR



TYPE	L	ØC	ØD	q.ty
RO-CI-4	32	2	4	50
RO-CI-6	35	4	6	50
RO-CI-8	38	6	8	50
RO-CI-10	45,5	8	10	50
RO-CI-12	48	10	12	25
RO-CI-14	52	12	14	20

PARALLEL LONG ADAPTER

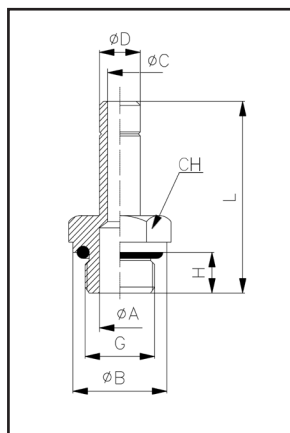
5



TYPE	L	ØA	ØB	ØC	ØD	G	H	CH	q.ty
RO-ACL-4/M7	38	4	-	2	4	M7	6	10	50
RO-ACL-4/01	39,2	6	13	2	4	G1/8	6	13	50
RO-ACL-6/M7	42	4	-	4	6	M7	6	10	50
RO-ACL-6/01	43,5	6	13	4	6	G1/8	6	13	50
RO-ACL-6/02	46	7,5	16	4	6	G1/4	8	14	50
RO-ACL-8/01	46,7	6	13	6	8	G1/8	6	13	50
RO-ACL-8/02	49,7	7,5	16	6	8	G1/4	8	14	50
RO-ACL-10/02	55,5	8	16	8	10	G1/4	8	14	50

P.S.: THIS ADAPTER CAN BE USED EVEN WITH THE UNION FITTINGS OF SERIES "RT"

PARALLEL ADAPTER



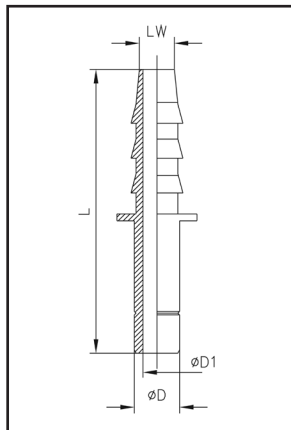
TYPE	L	ØA	ØB	ØC	ØD	G	H	CH	q.ty
RO-AC-4/M5	24,5	2	8	2	4	M5	4	8	50
RO-AC-4/M7	26	4	-	2	4	M7	6	10	50
RO-AC-4/01	27,7	6	13	2	4	G1/8	6	13	50
RO-AC-4/02	30,2	7,5	16	2	4	G1/4	8	13	50
RO-AC-6/M5	26	2,6	8	2,6	6	M5	4	8	50
RO-AC-6/M7	28	4	-	4	6	M7	6	10	50
RO-AC-6/01	29,5	6	13	4	6	G1/8	6	13	50
RO-AC-6/02	32	7,5	16	4	6	G1/4	8	13	50
RO-AC-8/01	31	6	13	6	8	G1/8	6	13	50
RO-AC-8/02	33,5	7,5	16	6	8	G1/4	8	13	50
RO-AC-8/03	35,5	9	20	6	8	G3/8	9	13	50
RO-AC-10/01	35,5	6	-	8	10	G1/8	6	13	50
RO-AC-10/02	38	8	16	8	10	G1/4	8	13	50
RO-AC-10/03	41	8	20	8	10	G3/8	9	13	50
RO-AC-12/02	39	10	16	10	12	G1/4	8	13	50
RO-AC-12/03	42	11	20	10	12	G3/8	9	13	25
RO-AC-12/04	44	13	24	10	12	G1/2	11	16	25
RO-AC-14/03	44	12	20	12	14	G3/8	9	16	25
RO-AC-14/04	46	13	24	12	14	G1/2	11	16	25

P.S.: THIS ADAPTER CAN BE USED EVEN WITH THE UNION FITTINGS OF SERIES "RT"

Push-in brass fittings

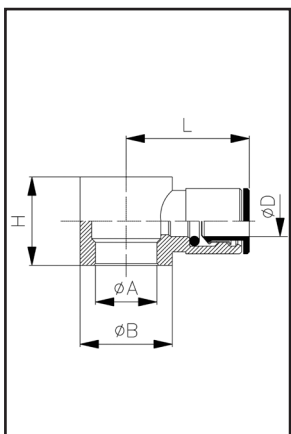
series **RO**

TUBE CONNECTOR



TYPE	L	ØD	ØD1	LW	q.ty
RO-CT-6/4	36,5	6	4	6	25
RO-CT-8/6	38	8	6	6	25
RO-CTL-8/6	43	8	6	8	25
RO-CT-12/10	57	12	10	13	25
RO-CT-14/11	60	14	11	14	25

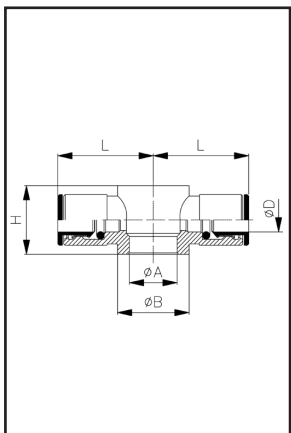
SINGLE BANJO BODY



TYPE	L	ØA	ØB	ØD	-	H	q.ty
RO-CBS-4/M5	19	5	9	4	M5	9	50
RO-CBS-4/M6	19	6	9	4	M6	9	50
RO-CBS-4/01	21	9,9	14	4	G1/8	15	50
RO-CBS-6/M5	19	5,1	10	6	M5	10,5	50
RO-CBS-6/01	23	9,9	14	6	G1/8	15	50
RO-CBS-6/02	24	13,3	18	6	G1/4	17	50
RO-CBS-8/01	24,5	9,9	14	8	G1/8	15	50
RO-CBS-8/02	26	13,3	18	8	G1/4	17	50
RO-CBS-8/03	28	16,6	21	8	G3/8	20	50
RO-CBS-10/02	27	13,3	18	10	G1/4	17	50
RO-CBS-10/03	29	16,6	21	10	G3/8	20	25
RO-CBS-12/02	28	13,6	18	12	G1/4	17	25
RO-CBS-12/03	30	16,6	21	12	G3/8	20	25

5

DOUBLE BANJO BODY

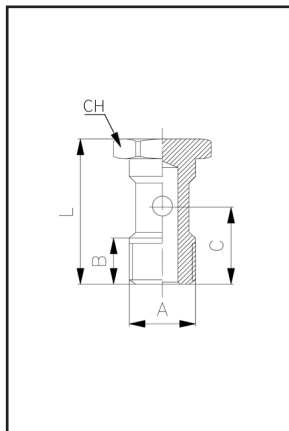


TYPE	L	ØA	ØB	ØD	-	H	q.ty
RO-CBD-4/M5	18,5	5	7	4	M5	9	50
RO-CBD-4/01	21	9,9	14	4	G1/8	15	50
RO-CBD-6/01	23	9,9	14	6	G1/8	15	50
RO-CBD-6/02	24	13,3	18	6	G1/4	17	50
RO-CBD-8/01	24,5	9,9	14	8	G1/8	15	50
RO-CBD-8/02	26	13,3	18	8	G1/4	17	50
RO-CBD-8/03	28	16,6	21	8	G3/8	20	50
RO-CBD-10/02	27	13,3	18	10	G1/4	17	50
RO-CBD-10/03	29	16,6	21	10	G3/8	20	25
RO-CBD-12/03	30	16,6	21	12	G3/8	20	25

series RO

Push-in brass fittings

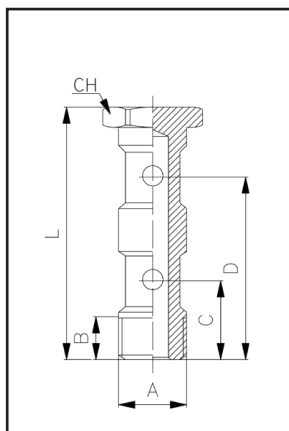
SINGLE BANJO STEM



TYPE	L	A	B	C	CH	q.ty
RO-VBS-M5	17,5	M5	7,6	9,6	8	50
RO-VBS-M6	19	M6	7,5	10,8	8	50
RO-VBS-01	28	G1/8	9	15	14	50
RO-VBS-02	33	G1/4	13	18	17	50
RO-VBS-03	37	G3/8	12	21,5	22	50
RO-VBS-04	42	G1/2	14,5	23,5	27	25

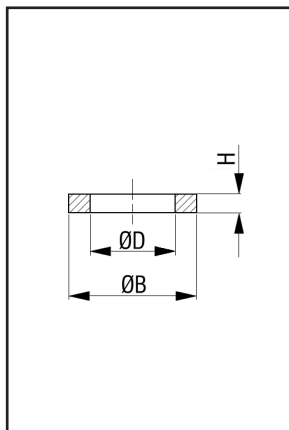
DOUBLE BANJO STEM

5



TYPE	L	A	B	C	D	CH	q.ty
RO-VBD-01	44,5	G1/8	9	15	31	14	25
RO-VBD-02	51,5	G1/4	11	17	36	17	25
RO-VBD-03	58,6	G3/8	12	20,5	42	19	25
RO-VBD-04	68	G1/2	13	23,5	49,5	27	25

WASHER



TYPE	ØB	ØD	H	-	q.ty
RO-RD-M5	7,7	5,3	1	M5	100
RO-RD-01	13	10,2	1,5	G1/8	100
RO-RD-02	17,9	13,4	2	G1/4	100
RO-RD-03	21,8	17,1	2	G3/8	100
RO-RD-04	26,5	21,3	2	G1/2	100
RO-RD-06	32,4	26,7	2	G3/4	100

For banjo stem type RC-VBS, RO-VBS and RO-VBD, order No. 2 spacers type RO-RD, to be fitted as follow: one under the head of the screw, and one under the last banjo.

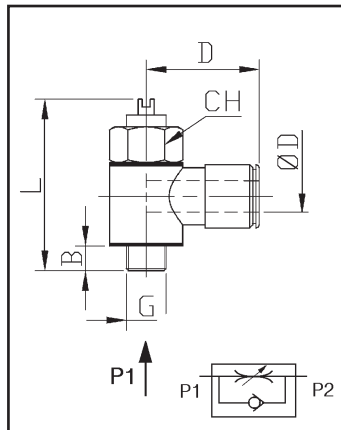
Spacer for RO-VB and RC-VBD*					
TYPE	ØB	ØD	H	-	q.ty
RO-DIS-01	14	10,2	5	G1/8	50
RO-DIS-02	17,5	13,2	5	G1/4	50

* To be fitted between the two rings.

Push-in brass fittings

series **RO**

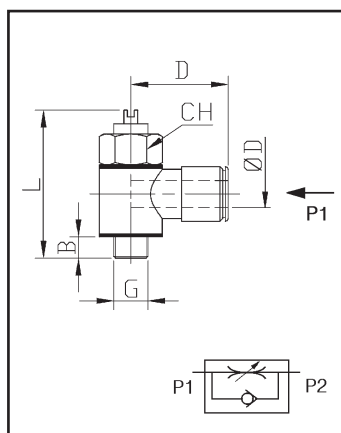
PARALLEL UNIDIRECTIONAL FLOW REGULATOR (SCREWDRIVER) FOR CYLINDER (OUT)



TYPE	L	B	D	ØD	G	CH	NI/min*	q.ty
RO-RC-4/M5	24,5	6	17	4	M5	8	45	50
RO-RC-4/01	31,5	5,5	21	4	G1/8	14	310	50
RO-RC-6/M5	24,5	4	21	6	M5	8	45	50
RO-RC-6/01	31,5	5,5	22,5	6	G1/8	14	390	50
RO-RC-6/02	38	6	24	6	G1/4	17	710	50
RO-RC-8/01	31,5	5,5	24,5	8	G1/8	14	390	25
RO-RC-8/02	38	6	26	8	G1/4	17	810	25
RO-RC-8/03	40	6	28	8	G3/8	20	1050	25
RO-RC-10/02	38	6	28	10	G1/4	17	810	25
RO-RC-10/03	47	6	29	10	G3/8	20	1050	25
RO-RC-12/02	38	6	28	12	G1/4	17	810	25
RO-RC-12/03	47	6	30	12	G3/8	20	1050	10

* Nominal flow rate at 6 bar

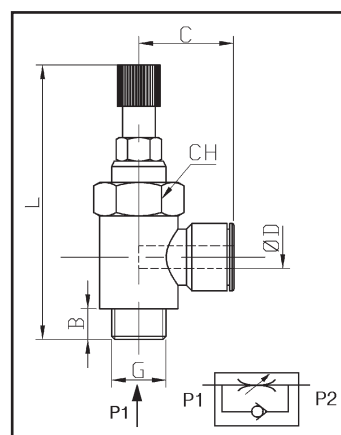
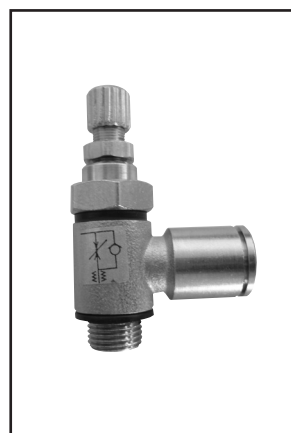
PARALLEL UNIDIRECTIONAL FLOW REGULATOR (SCREWDRIVER) FOR VALVE (IN)



TYPE	L	B	D	ØD	G	CH	NI/min*	q.ty
RO-RV-4/M5	24,5	6	17	4	M5	8	45	50
RO-RV-4/01	31,5	5,5	21	4	G1/8	14	310	50
RO-RV-6/M5	24,5	4	21	6	M5	8	45	50
RO-RV-6/01	31,5	5,5	22,5	6	G1/8	14	390	50
RO-RV-6/02	38	6	24	6	G1/4	17	710	50
RO-RV-8/01	31,5	5,5	24,5	8	G1/8	14	390	25
RO-RV-8/02	38	6	26	8	G1/4	17	810	25
RO-RV-8/03	40	6	28	8	G3/8	20	1050	25
RO-RV-10/02	38	6	28	10	G1/4	17	810	25
RO-RV-10/03	47	6	29	10	G3/8	20	1050	25
RO-RV-12/02	38	6	28	12	G1/4	17	810	25
RO-RV-12/03	47	6	30	12	G3/8	20	1050	10

* Nominal flow rate at 6 bar

PARALLEL UNIDIRECTIONAL FLOW REGULATOR (HANDWHEEL) FOR CYLINDER (OUT)



TYPE	L	B	C	ØD	G	NI/min*	CH	q.ty
RO-RF-4/01	49	5,5	17	4	G1/8	310	14	50
RO-RF-6/01	49	5,5	21	6	G1/8	390	14	50
RO-RF-8/01	49	5,5	22,5	8	G1/8	390	14	50
RO-RF-6/02	56,5	6	22,5	6	G1/4	710	17	25
RO-RF-8/02	56,5	6	24	8	G1/4	810	17	25
RO-RF-10/02	56,5	6	24,5	10	G1/4	810	17	25
RO-RF-12/02	56,5	6	26	12	G1/4	810	17	25

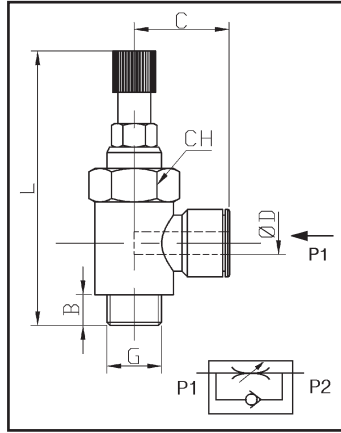
* Nominal flow rate at 6 bar

5

series RO

Push-in brass fittings

PARALLEL UNIDIRECTIONAL FLOW REGULATOR (HANDWHEEL) FOR VALVE (IN)



TYPE	L	B	C	ØD	G	NI/min*	CH	q.ty
RO-RFV-4/01	49	5,5	17	4	G1/8	310	14	50
RO-RFV-6/01	49	5,5	21	6	G1/8	390	14	50
RO-RFV-8/01	49	5,5	22,5	8	G1/8	390	14	50
RO-RFV-6/02	56,5	6	22,5	6	G1/4	710	17	25
RO-RFV-8/02	56,5	6	24	8	G1/4	810	17	25
RO-RFV-10/02	56,5	6	24,5	10	G1/4	810	17	25
RO-RFV-12/02	56,5	6	26	12	G1/4	810	17	25

* Nominal flow rate at 6 bar