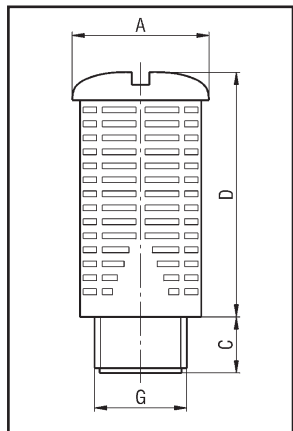


# Silencers

## PARALLEL SILENCER

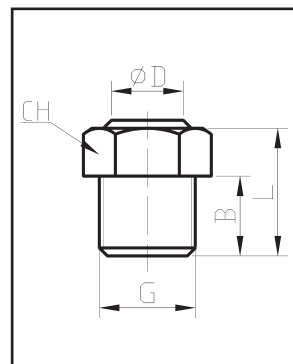


TYPE	A	C	D	G	q.ty
ES8/N	15,5	6	26,5	1/8	100
ES4/N	19,5	8	35	1/4	100
ES3/N	24,5	11	47	3/8	50
ES2/N	24,5	11	47	1/2	50
ES15/N	48	18	97	3/4	10
ES1/N	48	18	97	1	10

Body: Acetal resin  
Filter: Granulate ABS

## FLAT SILENCER

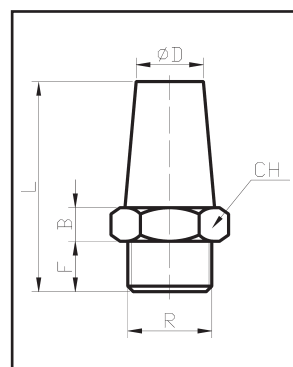
5



TYPE	L	B	ØD	G	CH	q.ty
SP-M5	9,5	5	6,4	M5	9	50
SP-01	11	6	10	G1/8	12	50
SP-02	14,5	8,5	13	G1/4	16	50
SP-03	17	10	16	G3/8	19	50
SP-04	19	11	17	G1/2	22	20

Body: Brass  
Filter: Spherical sintered bronze 100 µm

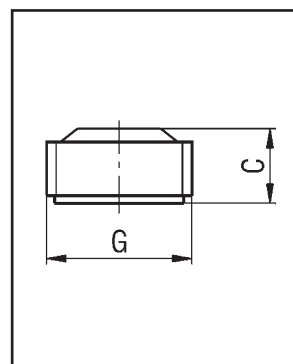
## CONICAL SILENCER



TYPE	L	B	ØD	F	R	CH	q.ty
SC-M5	20	3,5	5,5	5	M5	10	100
SC-01	24	4	8	6	G1/8	13	50
SC-02	33	4	11	8	G1/4	17	50
SC-03	44	5	14	10	G3/8	22	50
SC-04	49	6,5	18	10	G1/2	24	50
SC-06	57	7,5	21	11	G3/4	30	50
SC-08	72	8,5	27	15,5	G1	36	50

Body: Brass  
Filter: Spherical sintered bronze 36 µm

## HIDDEN SILENCER



TYPE	C	G	q.ty
SS-01	4	G1/8	100
SS-02	6	G1/4	50
SS-03	8	G3/8	50
SS-04	9	G1/2	25
SS-06	8	G3/4	10
SS-08	10	G1	5

Body: Brass  
Filter: Spherical sintered bronze 50 µm