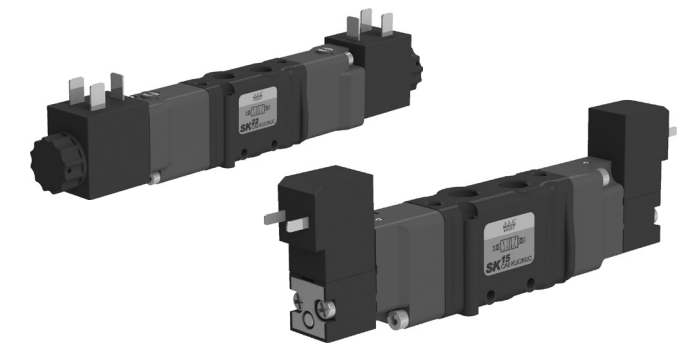


Spool valves pilot and solenoid  
actuated G1/8

series **SK**

DESCRIPTION

Valves series “SK” are produced the size G1/8 in the following pneumatic functions: 3/2, 5/2, 5/3 and “3/2+3/2”. The electrical version can mount two kinds of piloting solenoid valves: the 15 mm one (type “SK815”) or the 22 mm integrated one (type “SK822”). Valves series “SK” can be used single or in manifold mounting, regardless the pneumatic functions: 5/3, 5/2 and 3/2, the last one using the adapter type “KIT/A/SK8”. The version “3/2+3/2” includes No. 2-3/2 valves in a single body, so with a very compact overall dimensions compared to the No. 2 valves it’s replacing in terms of pneumatic function, as well as compared to the pressure or open center versions. Upon request, they can be supplied in compliance with ATEX directive, category 3GD for electrical version with 15mm piloting solenoid valve and category 2GD for other versions.



2

TECHNICAL DATA

Operating pressure	Monostable: 2,5 ÷ 8 bar Bistable: 1,5 ÷ 8 bar
Working temperature	0 ÷ +60 °C (-10 °C with dry air)
Fluid	Compressed air, filtered, continuous lubricated, unlubricated or dry lubricated
Port size	G 1/8
Pneumatic piloting port size	M5
Nominal diameter	G 1/8 = 6 mm
Piloting solenoid valve	15 mm: UMCSV - see on page 2.5 22 mm integrated in the bottom
Coils	USB - see chapter Coils on page 2.17 USBG - see chapter Coils on page 2.17* USBG2 - see chapter Coils on page 2.17*
Electric connectors	MEK192/N with UMCSV USR102/N9 with C/USCSV ULR1B with C/USCSV* see chapter Connectors on page 2.18

\* Just for the valve single used (coil and connector protrude from the dimension of the valves).

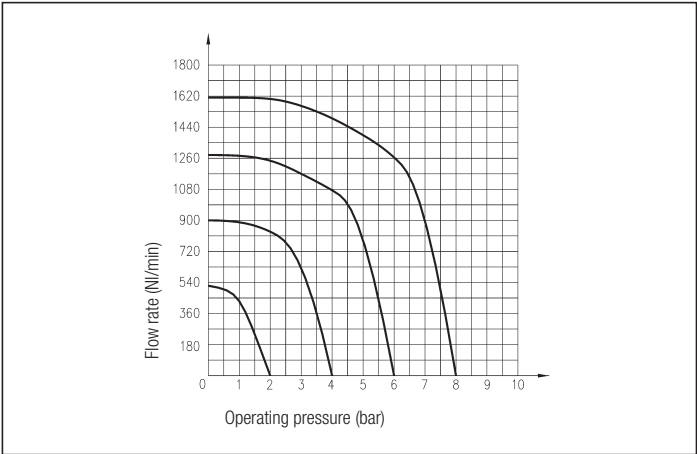
MATERIALS

Bottoms	Technopolymer
Body	Cast painted aluminium alloy
Distance ring	Acetal resin-brass
Springs	Stainless steel
Seals	NBR rubber
Spools	Nickel-plated steel
Piston	Anodized aluminium alloy

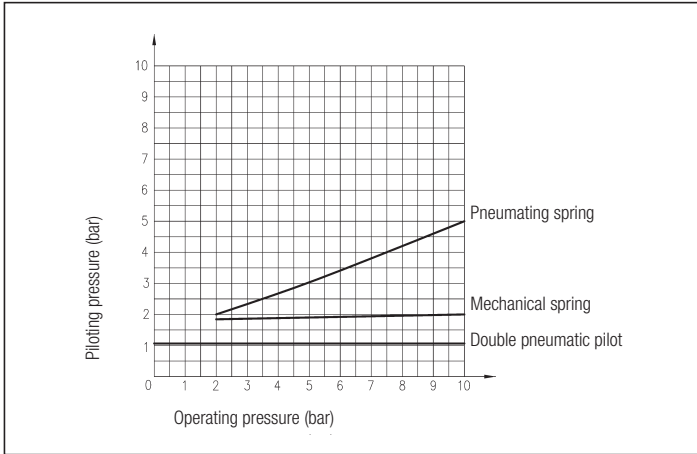
SPARE PARTS

SEALS KIT	
3/2 - G 1/8	SK/SG/8
5/2 - G 1/8	SKCA/SG/8
5/3 - G 1/8	SKCA/SG/8 - 5/3
3/2 + 3/2 - G 1/8	SK/SG/8 - 2 x 3/2

FLOW CHART SK G 1/8



PILOTING CHART SK G 1/8



series

SK

G 1/8 - 3 and 5 PORT

PILOT ACTUATED VALVE G 1/8 - 3 and 5 PORT

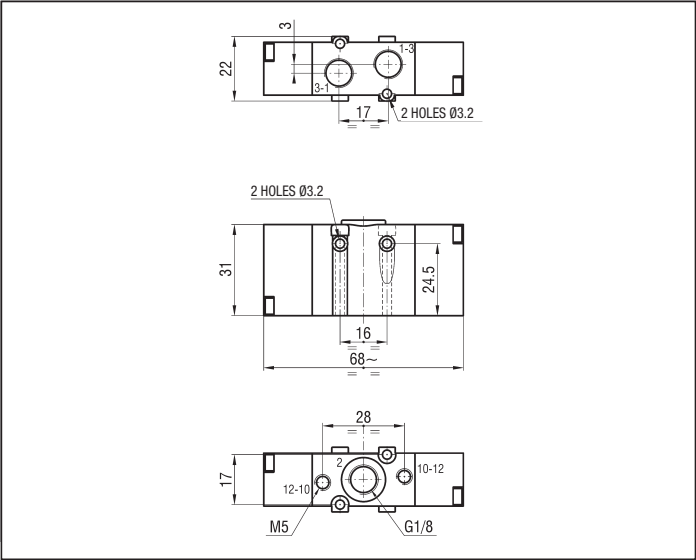
Symbol	Function	Controls		Response time at 6 bar (ms)		Flow rate at 6 bar ΔP = 1 bar (NI/min)	Weight (g)	TYPE*
		Pilot	Return	Energized	De-energized			
	3/2 N.O. monostable	Pneumatic	Pneumomechanical spring	11	35	650	80	SKA8 KR/ZQ
		Pneumatic	Pneumatic spring	11	35	650	80	SKA8 KR/TQ
	3/2 N.C. monostable	Pneumatic	Pneumomechanical spring	11	35	650	80	SKC8 KR/ZQ
		Pneumatic	Pneumatic spring	11	35	650	80	SKC8 KR/TQ
	3/2 bistable	Pneumatic	Pneumatic	12	12	650	80	SK8 KR/KR
		Big pneumatic	Small pneumatic	12	14	650	80	SK8 KR/TR
	5/2 monostable	Pneumatic	Pneumomechanical spring	13	38	750	100	SKCA8 KR/ZQ
		Pneumatic	Pneumatic spring	13	38	750	100	SKCA8 KR/TQ
	5/2 bistable	Pneumatic	Pneumatic	11	11	750	100	SKCA8 KR/KR
		Big pneumatic	Small pneumatic	11	15	750	100	SKCA8 KR/TR
	5/3 closed centre	Pneumatic	Pneumatic spring	15	17	600	105	SKCA8 SR/SR
	3/2 N.O. + 3/2 N.O. monostable	Pneumatic	Pneumatic spring	15	17	600	105	SKA+A8 KR/ZR
	3/2 N.O. + 3/2 N.C. monostable	Pneumatic	Pneumatic spring	15	17	600	105	SKA+C8 KR/ZR
	3/2 N.C. + 3/2 N.O. monostable	Pneumatic	Pneumatic spring	15	17	600	105	SKC+A8 KR/ZR
	3/2 N.C. + 3/2 N.C. monostable	Pneumatic	Pneumatic spring	15	17	600	105	SKC+C8 KR/ZR

\*/EX Consistent with the ATEX directive II 2GD c T5 T100°C -10°C≤Ta≤60°C E.G.: SKA8 KR/ZQ/EX

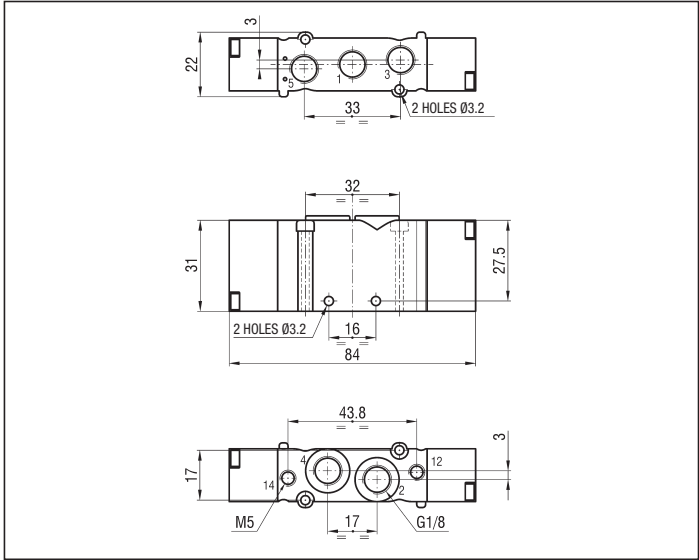
G 1/8 - 3 and 5 PORT

series **SK**

3 PORT MONOSTABLE AND BISTABLE



3+3 AND 5 PORT MONOSTABLE AND BISTABLE



2

series

SK

G 1/8 - 3 PORT

SOLENOID ACTUATED VALVES WITH 15 mm COIL G 1/8 - 3 PORT

Symbol	Function	Controls		Response time at 6 bar (ms)		Flow rate at 6 bar ΔP = 1 bar (l/min)	Weight (g)	TYPE*
		Pilot	Return	Energized	De-energized			
	3/2 N.O. monostable	Solenoid	Pneumomechanical spring	11	35	650	116	SKA815 KUC/ZQ
		Solenoid	Pneumatic spring	11	35	650	116	SKA815 KUC/TQ
		Solenoid pilot assisted	Pneumomechanical spring	11	35	650	116	SKA815 KUR/ZQ
	3/2 N.C. monostable	Solenoid	Pneumomechanical spring	11	35	650	116	SKC815 KUC/ZQ
		Solenoid	Pneumatic spring	11	35	650	116	SKC815 KUC/TQ
		Solenoid pilot assisted	Pneumomechanical spring	11	35	650	116	SKC815 KUR/ZQ
	3/2 bistable	Solenoid	Solenoid	12	12	650	150	SK815 KUC/KUC
		Solenoid pilot assisted	Solenoid pilot assisted	11	11	650	150	SK815 KUR/KUR

\* SPECIFY THE VOLTAGE IN THE ORDER - E.G.: SKA815 KUC/ZQ 02450-60

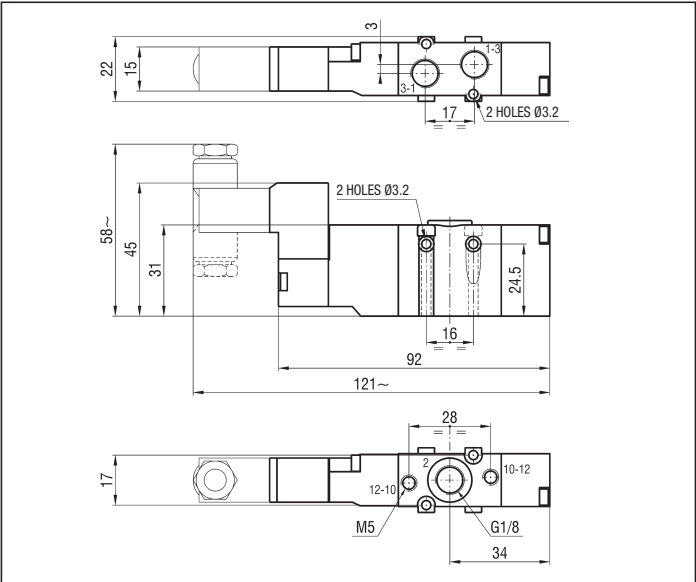
02400 = 24 V DC  
02450-60 = 24 V AC

11050-60 = 110 V AC  
22050-60 = 220 V AC

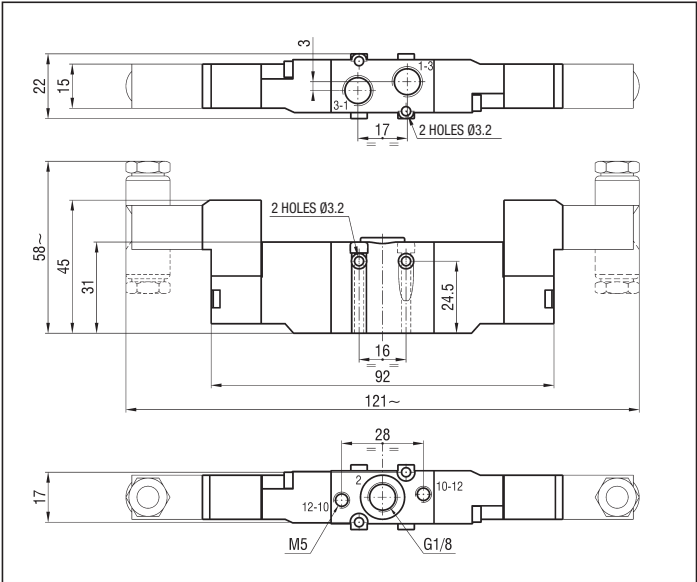
/EX Consistent with the ATEX directive II 3G c Ex nA IIC T5 Gc -5°C≤Ta≤50°C  
II 3D c Ex tc IIIC T100°C IP65 Dc

E.G.: SKA815 KUC/ZQ 02450-60/EX

3 PORT MONOSTABLE



3 PORT BISTABLE



G 1/8 - 3 PORT

series

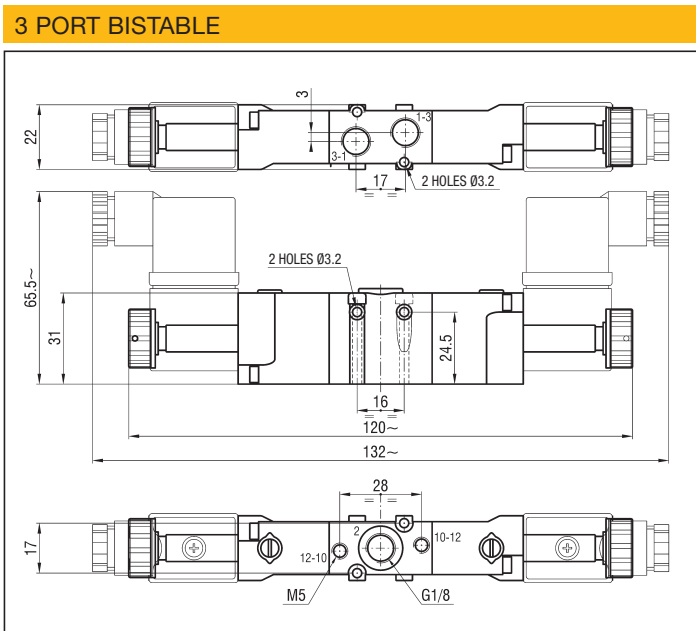
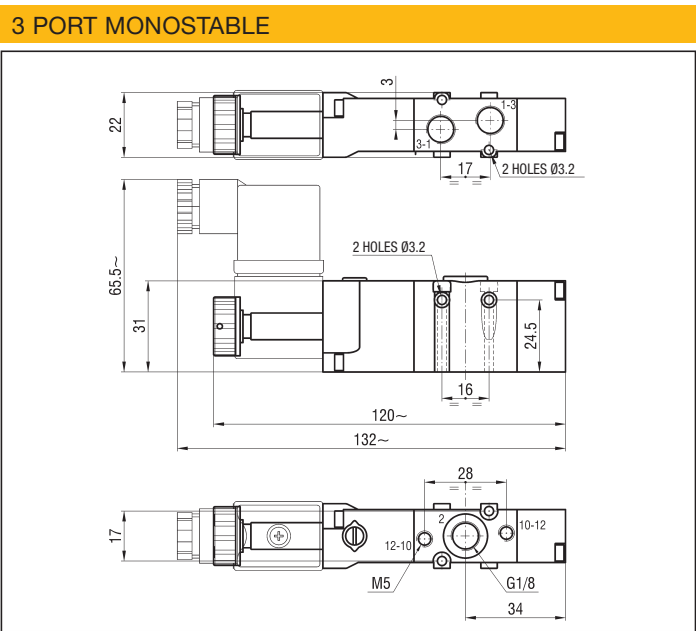
SK

SOLENOID ACTUATED VALVES WITH Ø 9 mm SLEEVE G 1/8 - 3 PORT

Symbol	Function	Controls		Response time at 6 bar (ms)		Flow rate at 6 bar ΔP = 1 bar (l/min)	Weight (g)	TYPE*
		Pilot	Return	Energized	De-energized			
	3/2 N.O. monostable	Solenoid	Pneumomechanical spring	11	35	650	110	SKA822 KUC/ZQ
		Solenoid	Pneumatic spring	11	35	650	110	SKA822 KUC/TQ
		Solenoid pilot assisted	Pneumomechanical spring	11	35	650	110	SKA822 KUR/ZQ
	3/2 N.C. monostable	Solenoid	Pneumomechanical spring	11	35	650	110	SKC822 KUC/ZQ
		Solenoid	Pneumatic spring	11	35	650	110	SKC822 KUC/TQ
		Solenoid pilot assisted	Pneumomechanical spring	11	35	650	110	SKC822 KUR/ZQ
	3/2 bistable	Solenoid	Solenoid	12	12	650	140	SK822 KUC/KUC
		Solenoid pilot assisted	Solenoid pilot assisted	12	12	650	140	SK822 KUR/KUR

\*THE TYPES OF THE SOLENOID VALVE DO NOT INCLUDE COILS

/EX Consistent with the ATEX directive II 2GD c T5 T100°C -10°C≤Ta≤60°C E.G.: SKA822 KUC/ZQ



series

SK

G 1/8 - 5 PORT

SOLENOID ACTUATED VALVES WITH 15 mm COIL G 1/8 - 5 PORT

Symbol	Function	Controls		Response time at 6 bar (ms)		Flow rate at 6 bar ΔP = 1 bar (l/min)	Weight (g)	TYPE*
		Pilot	Returns	Energized	De-energized			
	5/2 monostable	Solenoid	Pneumomechanical spring	13	38	750	140	SKCA815 KUC/ZQ
		Solenoid	Pneumatic spring					SKCA815 KUC/TQ
		Solenoid pilot assisted	Pneumomechanical spring					SKCA815 KUR/ZQ
	5/2 bistable	Solenoid	Solenoid	11	11	750	170	SKCA815 KUC/KUC
		Solenoid pilot assisted	Solenoid pilot assisted					SKCA815 KUR/KUR
	5/3 closed centre	Solenoid	Mechanical spring	15	17	600	184	SKCA815 SUC/SUC
		Solenoid pilot assisted	Mechanical spring					SKCA815 SUR/SUR
	3/2 N.O. + 3/2 N.O. monostable	Solenoid	Mechanical spring	15	17	600	184	SKA+A815 KUC/ZR
		Solenoid pilot assisted	Mechanical spring					SKA+A815 KUR/ZR
	3/2 N.O. + 3/2 N.C. monostable	Solenoid	Mechanical spring	15	17	600	184	SKA+C815 KUC/ZR
		Solenoid pilot assisted	Mechanical spring					SKA+C815 KUR/ZR
	3/2 N.C. + 3/2 N.O. monostable	Solenoid	Mechanical spring	15	17	600	184	SKC+A815 KUC/ZR
		Solenoid pilot assisted	Mechanical spring					SKC+A815 KUR/ZR
	3/2 N.C. + 3/2 N.C. monostable	Solenoid	Mechanical spring	15	17	600	184	SKC+C815 KUC/ZR
		Solenoid pilot assisted	Mechanical spring					SKC+C815 KUR/ZR

\* SPECIFY THE VOLTAGE IN THE ORDER - E.G.: SKCA815 KUC/ZQ 02450-60

/EX Consistent with the ATEX directive

II 3G c Ex nA IIC T5 Gc -5°C≤Tas≤50°C  
II 3D c Ex tc IIIC T100°C IP65 Dc

02400 = 24 V DC  
02450-60 = 24 V AC

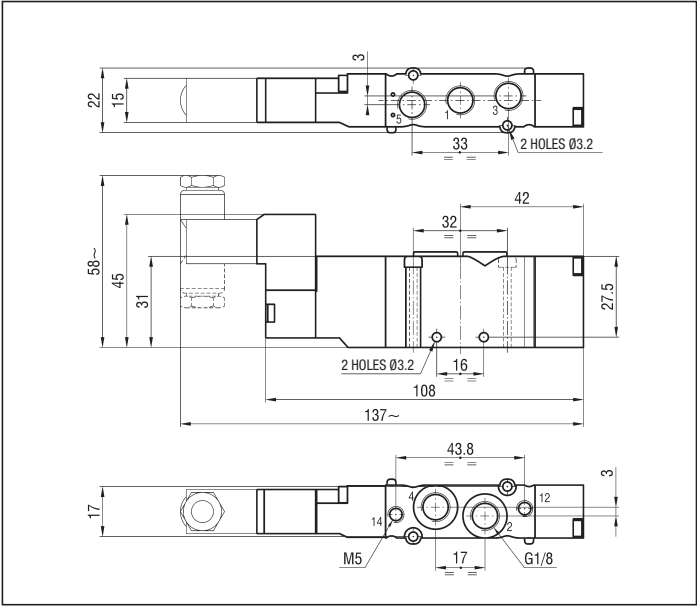
11050-60 = 110 V AC  
22050-60 = 220 V AC

E.G.: SKCA815 KUC/ZQ 02450-60/EX

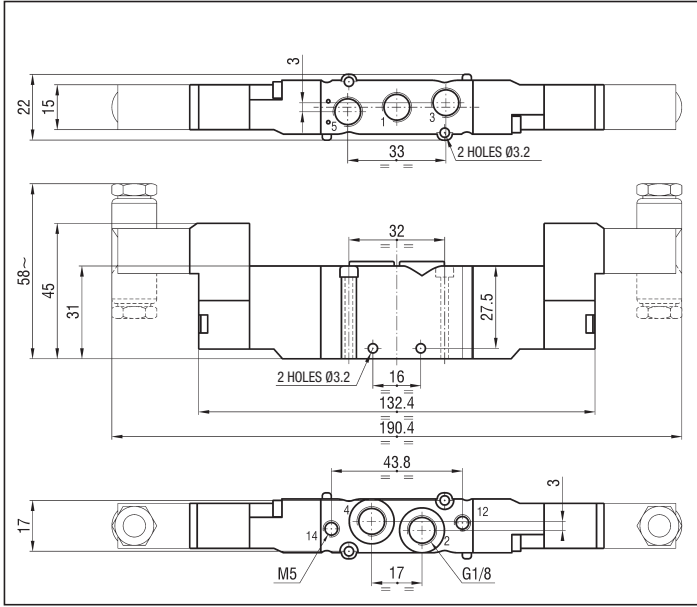
G 1/8 - 5 PORT

series **SK**

5 PORT MONOSTABLE



3+3 AND 5 PORT 2 AND 3 POSITIONS



2

series

SK

G 1/8 - 5 PORT

SOLENOID ACTUATED VALVES WITH Ø 9 mm SLEEVE G 1/8 - 5 PORT

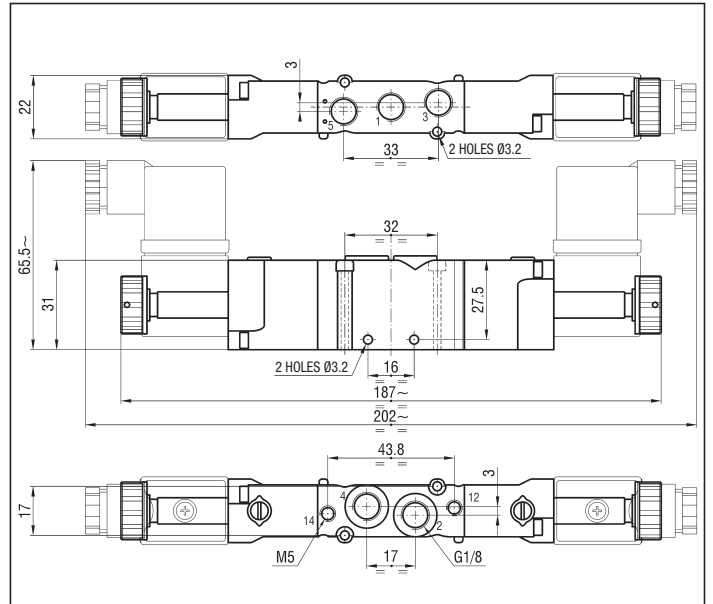
Symbol	Function	Controls		Response time at 6 bar (ms)		Flow rate at 6 bar ΔP = 1 bar (l/min)	Weight (g)	TYPE*
		Pilot	Returns	Energized	De-energized			
	5/2 monostable	Solenoid	Pneumomechanical spring	13	38	750	130	SKCA822 KUC/ZQ
		Solenoid	Pneumatic spring					SKCA822 KUC/TQ
		Solenoid pilot assisted	Pneumomechanical spring					SKCA822 KUR/ZQ
	5/2 bistable	Solenoid	Solenoid	11	11	750	160	SKCA822 KUC/KUC
		Solenoid pilot assisted	Solenoid pilot assisted					SKCA822 KUR/KUR
	5/3 closed centre	Solenoid	Mechanical spring	15	17	600	170	SKCA822 SUC/SUC
		Solenoid pilot assisted	Mechanical spring					SKCA822 SUR/SUR
	3/2 N.O. + 3/2 N.O. monostable	Solenoid	Mechanical spring	15	17	600	170	SKA+A822 KUC/ZR
		Solenoid pilot assisted	Mechanical spring					SKA+A822 KUR/ZR
	3/2 N.O. + 3/2 N.C. monostable	Solenoid	Mechanical spring	15	17	600	170	SKA+C822 KUC/ZR
		Solenoid pilot assisted	Mechanical spring					SKA+C822 KUR/ZR
	3/2 N.C. + 3/2 N.O. monostable	Solenoid	Mechanical spring	15	17	600	170	SKC+A822 KUC/ZR
		Solenoid pilot assisted	Mechanical spring					SKC+A822 KUR/ZR
	3/2 N.C. + 3/2 N.C. monostable	Solenoid	Mechanical spring	15	17	600	170	SKC+C822 KUC/ZR
		Solenoid pilot assisted	Mechanical spring					SKC+C822 KUR/ZR

\* THE TYPES OF THE SOLENOID VALVE DO NOT INCLUDE COILS

/EX Consistent with the ATEX directive II 2GD c T5 T100°C -10°C≤Ta≤60°C E.G.: SKCA822 KUC/ZQ



## 2



series

MEV

Spool compact valves  
pilot and solenoid actuated G 1/8  
and to ISO 15407-2 standard  
(VDMA 24563) size 02

DESCRIPTION

Valves series “MEV” have been designed to satisfy the need of integration between pneumatics and electronics. Their main feature is the possibility to offer valve islands complete with the electrical connection. This series, realized in the 5/2 and 5/3 pneumatic functions, is composed of two types of valves: “MEV 8”, body ported G 1/8, prearranged for both single use and for mounting on multiple base with fixed stations; “MEV 18” (size 02), to ISO 15407-2 (VDMA 24563 - UNI 10528) standards, prearranged for mounting on both single and manifold bases. Both the multiple bases (that convey the exhausts port of the solenoid actuated electropilots) and the manifold ones are fit for mounting onto rails according to DIN 46277/3. For the 24 V AC/DC solenoid actuated valves with coils toward the bottom (versions “MEVX”), are available modules with two or four stations to carry out a multi-pin connection through a 25-pin plug with protection class “IP 65” (see technical information on page 0.7). Upon request, they can be supplied in compliance with ATEX directive, category 3GD for electrical version and 2GD for pneumatic ones.



TECHNICAL DATA

Operating pressure	Monostable: 1,8 ÷ 8 bar Bistabile: 1 ÷ 8 bar
Working temperature	0 ÷ +60 °C (-10 °C with dry air)
Fluid	Compressed air, filtered, continuous lubricated, unlubricated or dry lubricated
Port size	G 1/8 Size 02 = Interface to VDMA 24563 standard
Pneumatic piloting port size	G 1/8 = M5 Size 02 = Interface to VDMA 24563 standard
Nominal diameter	5 mm
Piloting solenoid valve	UMCSV - see chapter direct acting solenoid valves on page 2.5
Electric connectors	MEK192/N - see chapter connectors on page 2.18 see multi-pin connection on page 2.42

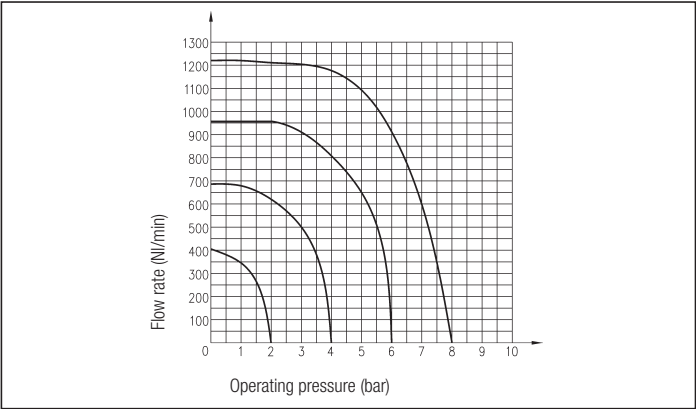
MATERIALS

Bottoms	Techno-polymer
Body	Anodized aluminium alloy
Springs	Stainless steel
Seals	NBR rubber
Spool	Anodized aluminium alloy
Piston	Anodized aluminium alloy

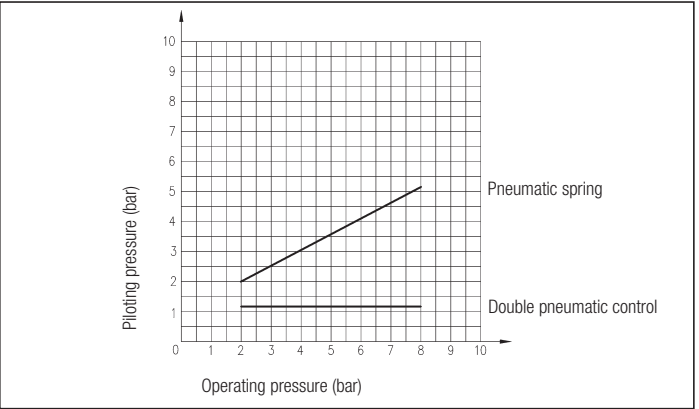
SPARE PARTS

SEALS KIT	
5/2 monostable and bistable	MEV/SG
5/3 closed centre	MEV/CC/SG
5/3 open centre	MEV/CA/SG
5/3 pressure centre	MEV/CP/SG

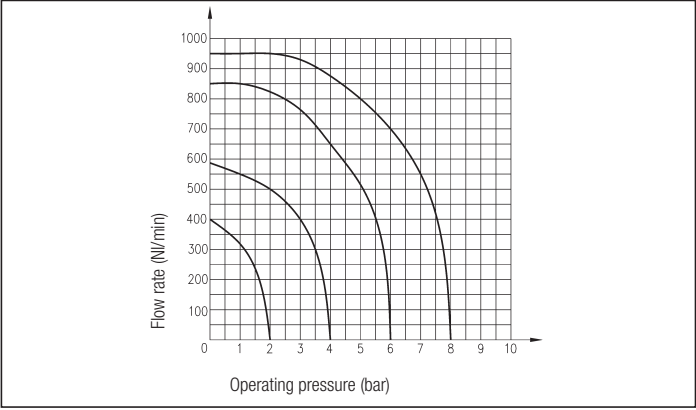
FLOW CHART MEV/8



PILOTING CHART MEV/8 - MEV/18



FLOW CHART MEV/18



G 1/8 - 5 PORT

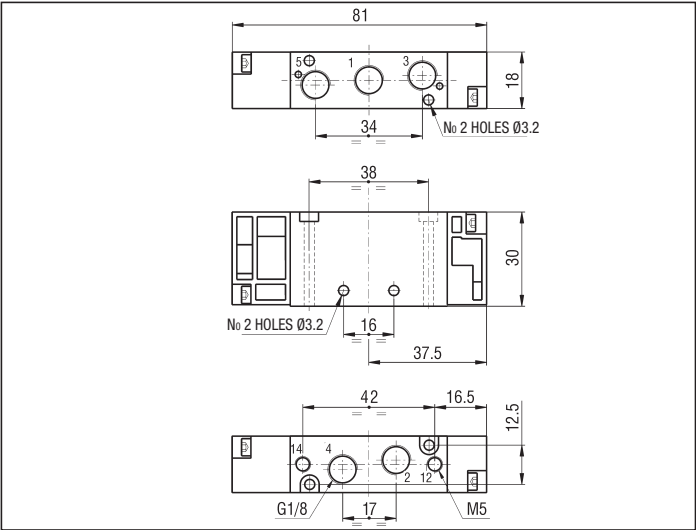
series

MEV

PILOT ACTUATED VALVES G 1/8 - MEV 8

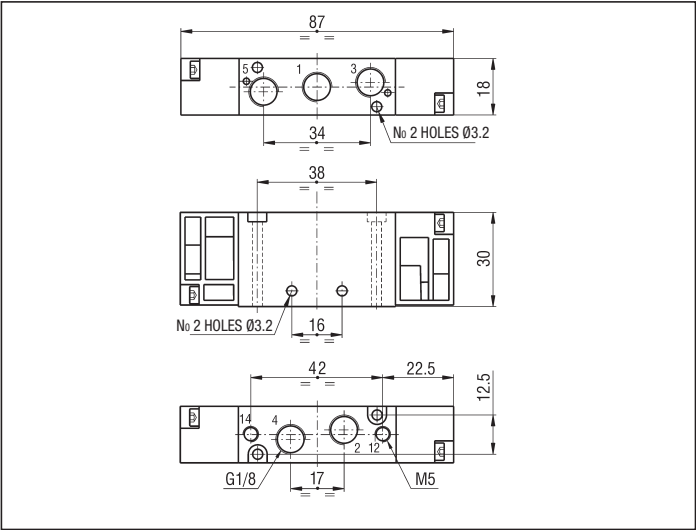
Symbol	Function	Controls		Response time at 6 bar (ms)		Flow rate at 6 bar ΔP = 1 bar (l/min)	Weight (g)	TYPE*
		Pilot	Return	Energized	De-energized			
	5/2 monostable	Pneumatic	Pneumomechanical spring	10	10	650	100	MEV8 KR/ZQ
		Pneumatic	Pneumatic spring	12	20	650	100	MEV8 KR/TQ
	5/2 bistable	Pneumatic	Pneumatic	10	10	650	100	MEV8 KR/KR
	5/3 closed centre	Pneumatic	Mechanical spring	10	10	510	100	MEV8 SR/SR
	5/3 open centre	Pneumatic	Mechanical spring	10	10	510	100	MEV8 AR/AR
	5/3 pressure centre	Pneumatic	Mechanical spring	10	10	650	100	MEV8 PR/PR

5 PORT - MONOSTABLE

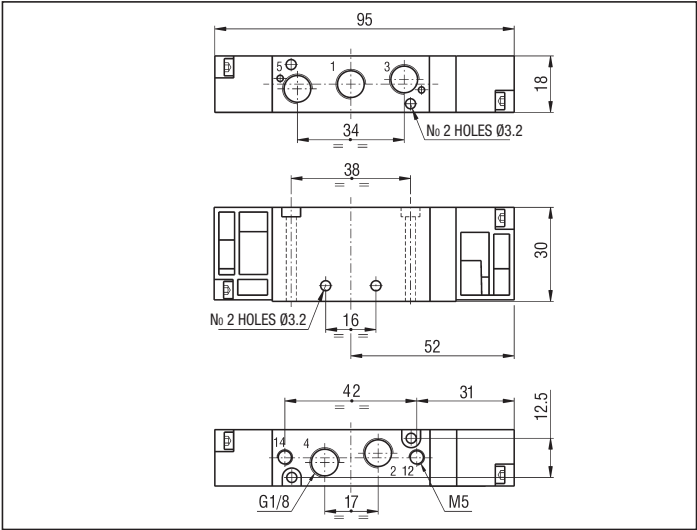


\*/EX Consistent with the ATEX directive II 2GD c T5 T100°C - 10°C≤Ta≤60°C  
E.G.: MEV8 KR/ZQ/EX

5 PORT - BISTABLE



5 PORT - 3 POSITIONS

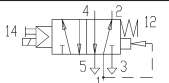
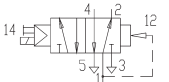
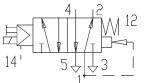
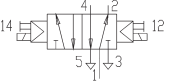
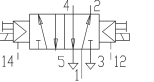
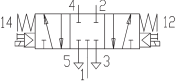
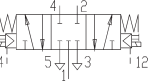
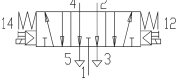
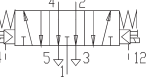
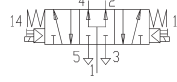
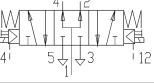


series

MEV

G 1/8 - 5 PORT

SOLENOID ACTUATED VALVES G 1/8 - MEV 8

Symbol	Function	Controls		Response time at 6 bar (ms)		Flow rate at 6 bar ΔP = 1 bar (NI/min)	Weight (g)	TYPE*
		Pilot	Return	Energized	De-energized			
	5/2 monostable	Solenoid	Pneumomechanical spring	10	30	650	130	MEV8 KUC/ZQ
		Solenoid	Pneumatic spring	10	20			MEV8 KUC/TQ
		Solenoid pilot assisted	Pneumomechanical spring	10	30			MEV8 KUR/ZQ
	5/2 bistable	Solenoid	Solenoid	10	10	650	160	MEV8 KUC/KUC
		Solenoid pilot assisted	Mechanical spring					MEV8 KUR/KUR
	5/3 closed centre	Solenoid	Mechanical spring	10	25	510	160	MEV8 SUC/SUC
		Solenoid pilot assisted	Mechanical spring					MEV8 SUR/SUR
	5/3 open centre	Solenoid	Mechanical spring	10	25	510	160	MEV8 AUC/AUC
		Solenoid pilot assisted	Mechanical spring					MEV8 AUR/AUR
	5/3 pressure centre	Solenoid	Mechanical spring	10	25	650	160	MEV8 PUC/PUC
		Solenoid pilot assisted	Mechanical spring					MEV8 PUR/PUR

\* SPECIFY THE VOLTAGE IN THE ORDER - E.G.: MEV8 KUC/ZQ 02400

02400 = 24 V DC  
02450-60 = 24 V AC

11050-60 = 110 V AC  
22050-60 = 220 V AC

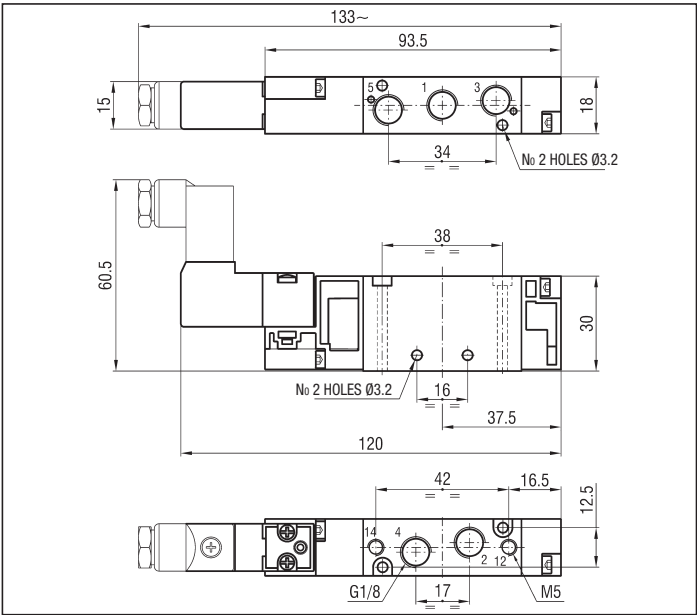
\*/EX Consistent with the ATEX directive  II 3G c Ex nA IIC T5 Gc -5°C≤Ta≤50°C  
II 3D c Ex tc IIIC T100°C IP65 Dc

E.G.: MEV8 KUC/ZQ 02400/EX

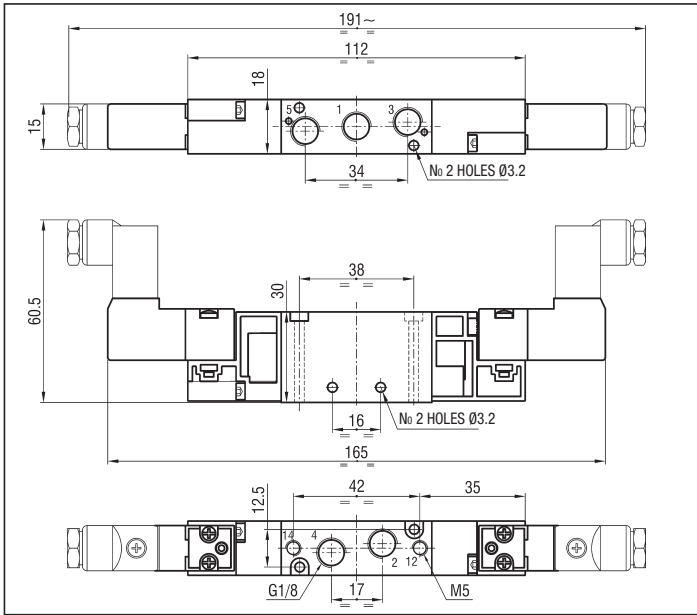
G 1/8 - 5 PORT

series **MEV**

5 PORT - MONOSTABLE

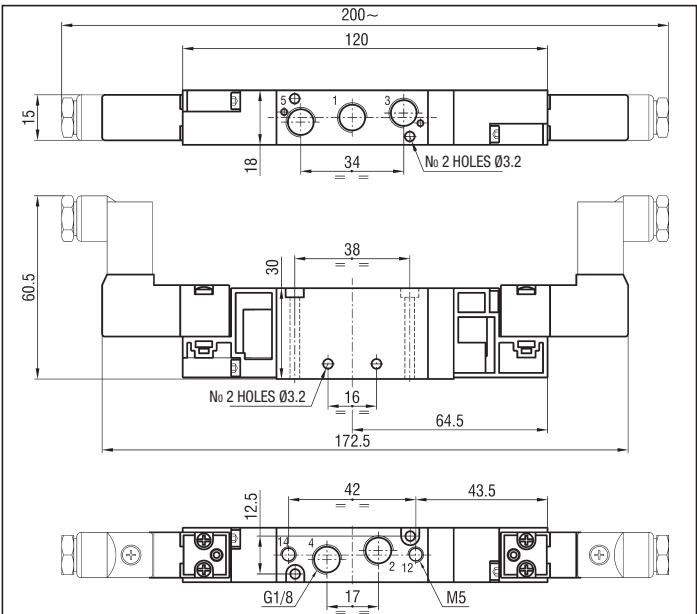


5 PORT - BISTABLE



2

5 PORT - 3 POSITIONS



series

MEV

G 1/8 - 5 PORT

SOLENOID ACTUATED VALVES WITH COILS TOWARD THE BOTTOM G 1/8 - MEVX 8  
SUITABLE FOR SINGLE USE OR MULTI-PIN PLUG CONNECTOR

Symbol	Function	Controls		Response time at 6 bar (ms)		Flow rate at 6 bar ΔP = 1 bar (NI/min)	Weight (g)	TYPE*
		Pilot	Return	Energized	De-energized			
	5/2 monostable	Solenoid	Pneumomechanical spring	10	30	650	130	MEVX8 KUC/ZQ
		Solenoid	Pneumatic spring	10	20			MEVX8 KUC/TQ
		Solenoid pilot assisted	Pneumomechanical spring	10	30			MEVX8 KUR/ZQ
	5/2 bistable	Solenoid	Solenoid	10	10	650	175	MEVX8 KUC/KUC
		Solenoid pilot assisted	Solenoid pilot assisted					MEVX8 KUR/KUR
	5/3 closed centre	Solenoid	Mechanical spring	10	25	510	175	MEVX8 SUC/SUC
		Solenoid pilot assisted	Mechanical spring					MEVX8 SUR/SUR
	5/3 open centre	Solenoid	Mechanical spring	10	25	510	175	MEVX8 AUC/AUC
		Solenoid pilot assisted	Mechanical spring					MEVX8 AUR/AUR
	5/3 pressure centre	Solenoid	Mechanical spring	10	25	650	175	MEVX8 PUC/PUC
		Solenoid pilot assisted	Mechanical spring					MEVX8 PUR/PUR

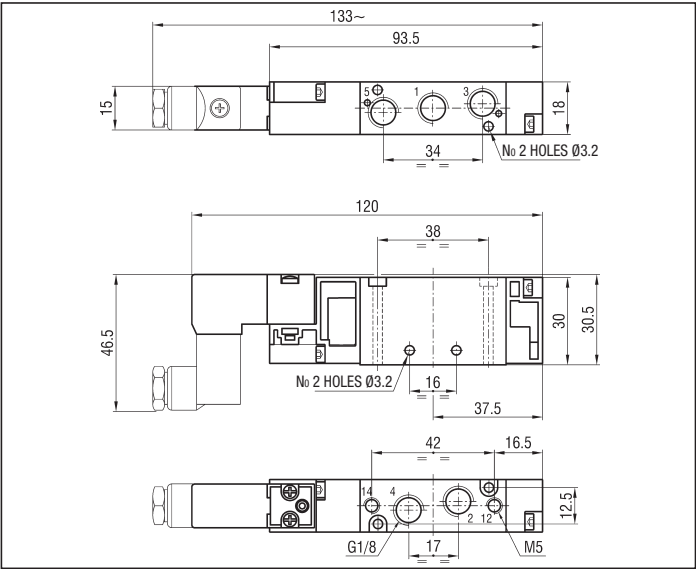
\* SPECIFY THE VOLTAGE IN THE ORDER  
E.G.: MEVX8 KUC/ZR 02400

02400 = 24 V DC  
02450-60 = 24 V AC

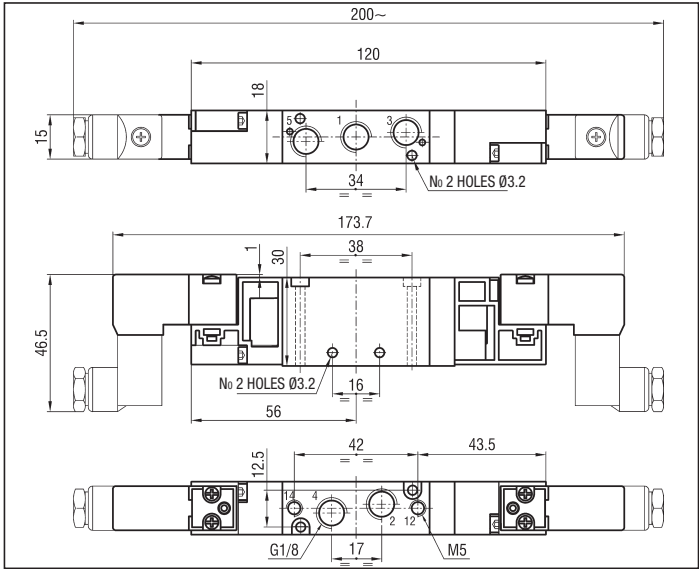
\* /EX Consistent with the ATEX directive  
E.G.: MEVX8 KUC/ZQ 02400/EX

II 3G c Ex nA IIC T5 Gc -5°C≤Ta≤50°C  
II 3D c Ex tc IIIC T100°C IP65 Dc

5 PORT - MONOSTABLE



5 PORT - BISTABLE AND 5 PORT - 3 POSITIONS

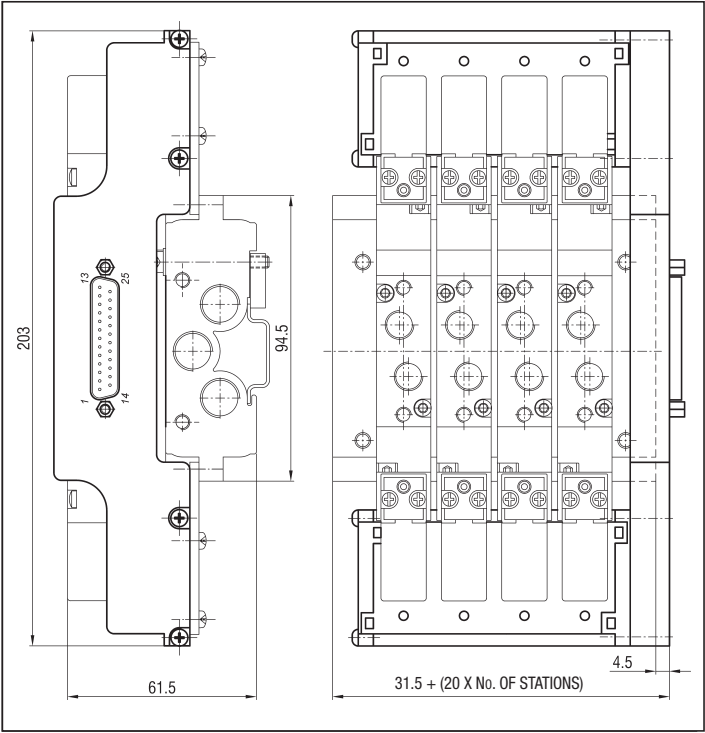


series **MEV**

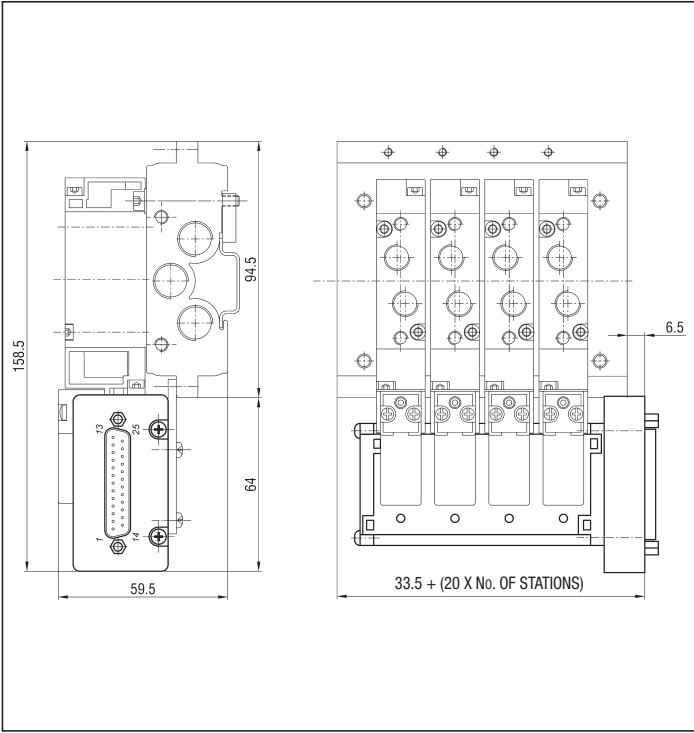
Assembling examples  
**Multi-pin connection with solenoid  
valves versions MEVX 8 and MEVX 18**

2

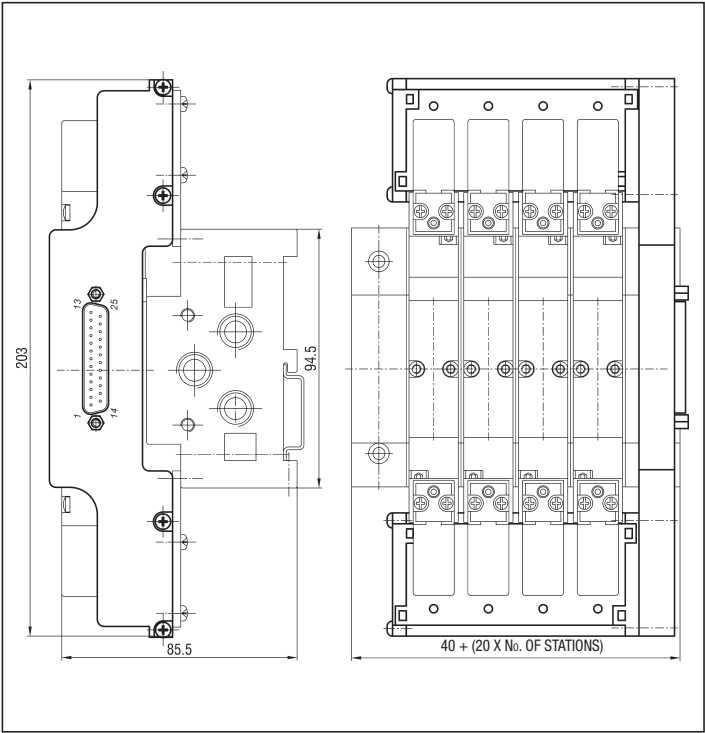
MEVX 8 WITH DOUBLE 25-PIN SUB-D PLUG



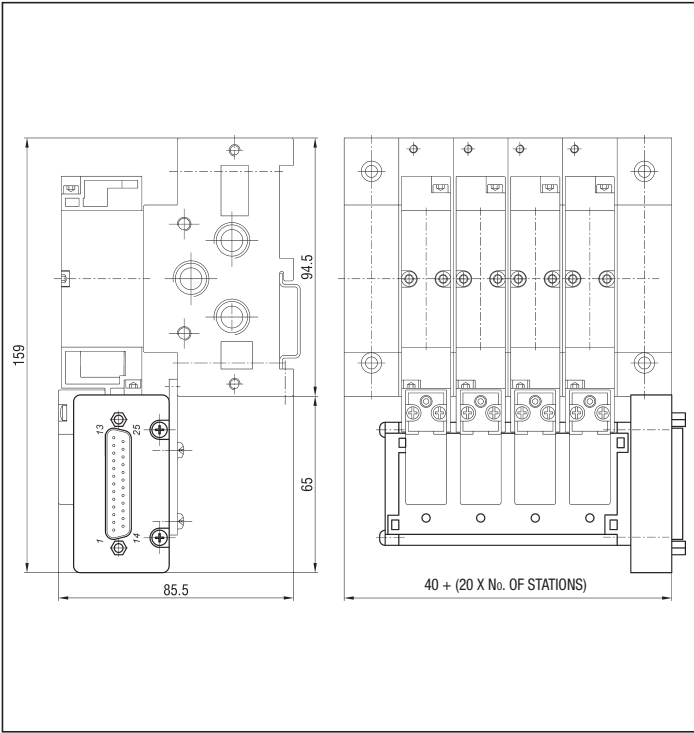
MEVX 8 WITH SINGLE 25-PIN SUB-D PLUG



MEVX 18 WITH DOUBLE 25-PIN SUB-D PLUG



MEVX 18 SINGLE 25-PIN SUB-D PLUG





Assembling examples  
Multi-pin connection with solenoid  
valves versions MEVX 8 and MEVX 18

series **MEV**

2

Solenoid valves versions MEVX allow a multi-pin plug connection with the possibility of creating islands of pre-assembled solenoid valves with a number of positions chosen by the user during the assembling of the components.

The replacement of the solenoid valves can be easily made in every moment.

Connection modules are at 2 or 4 positions that can operate with 24 V AC or DC voltage.

MEV/C2

Double 25-pin sub-d plug for batteries of bistable solenoid valves.

MEV/M2D/AC or DC (24 V)

Manifold base to VDMA 24563 standard - size 02

MEV18BM

MEV18PE

KB/MEV8

The bases are fit for mounting onto rails according to DIN 46277/3

MEV/PM

MEV/M4S/AC or DC (24 V)

MEV/C

FIXING PLATE

MEV8/PC

MEV/C1  
Single 25-pin sub-d plug for manifolds of monostable solenoid valves

Possibility of assembling till No. 4 modules of 4 positions each, for a total of 16 solenoid valves and the 2 positions module as final element for manifolds of 2, 6, 10, 14 positions.



series

MEK

Spool compact valves  
pilot and solenoid actuated  
G 1/8 - G 1/4

DESCRIPTION

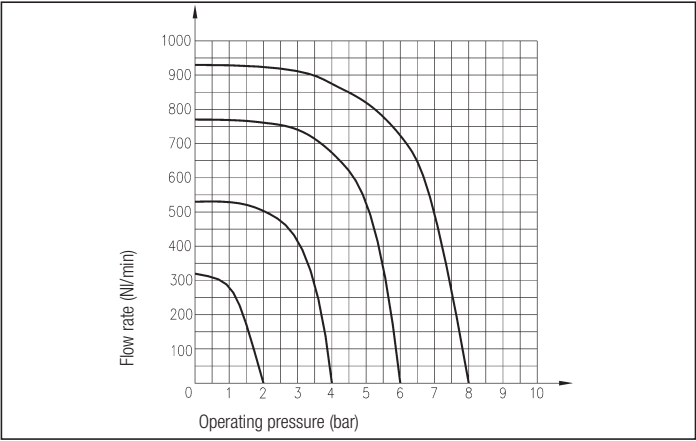
Valves series “MEK”, in the 5/2 and 5/3 pneumatic functions, have been realized with compact overall dimensions yet assuring high flow. The kind of construction is based on a balanced spool with dynamic seal thanks to antiglueing mix seals positioned on the same spool. In the solenoid control version, size G 1/8 supports 15 mm low absorption direct acting solenoid valve type UMCSV, while size G 1/4 supports both 15 than 22 mm direct acting solenoid valve type C/USCVP with sleeve Ø 9 mm. This series of valves is prearranged for manifold mounting with fixed stations and with conveyed inlet and exhausts, by means of frontal screws. The bases are fit for mounting onto rails according to DIN 46277/3. Upon request they comply with ATEX directive: 3GD category for the version with the 15 mm piloting solenoid valve and 2GD for all the other ones.

TECHNICAL DATA

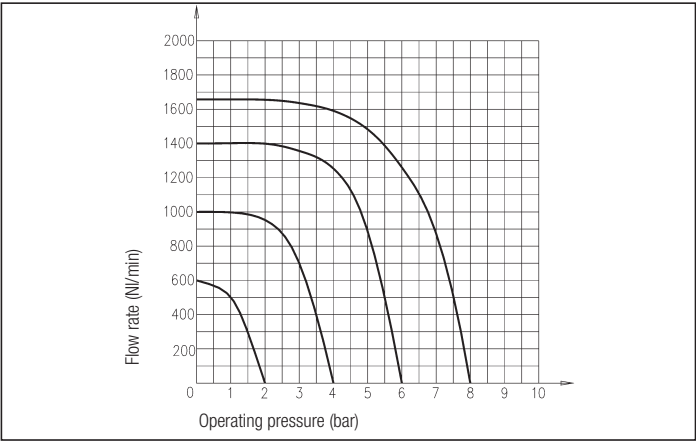
Operating pressure	Monostable: 2 ÷ 8 bar Bistable: 1,5 ÷ 8 bar
Working temperature	0 ÷ +60 °C (-10 °C with dry air)
Fluid	Compressed air, filtered, continuous lubricated, unlubricated or dry lubricated
Port size	G 1/8 - G 1/4
Pneumatic piloting port size	M5
Nominal diameter	G 1/8 = 5 mm; G 1/4 = 6,5 mm
Piloting solenoid valve	15 mm: UMCSV per G 1/8 and G 1/4 - see on page 2.5 22 mm: C/USCVP for G 1/4 - see on page 2.14
Coil	USB for G 1/4 - see chapter coils on page 2.17 USBG for G 1/4 - see chapter coils on page 2.17* USBG2 for G 1/4 - see chapter coils on page 2.17*
Electric connectors	MEK192/N for G 1/8 and G 1/4 with UMCSV; USR102/N9 for G 1/4 with C/USCVP ULR1B for G 1/4 with C/USCVP* See chapter connectors on page 2.18

\* Only for valve individually used (coil and connector protrude from the dimensions of the valves)

FLOW CHART - MEK G 1/8 5/2



FLOW CHART - MEK G 1/4 5/2



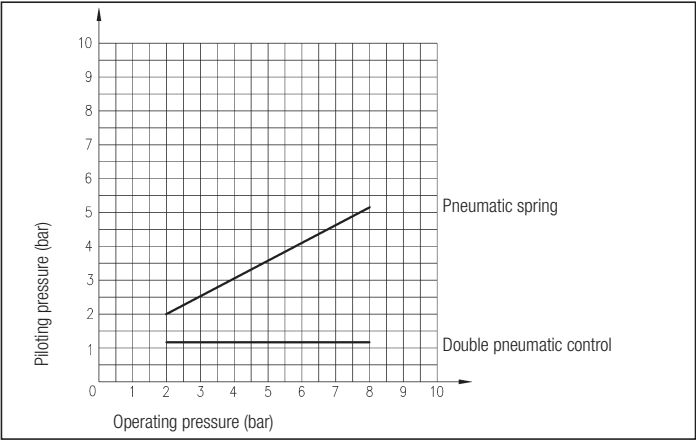
MATERIALS

Bottoms	Anodized aluminium alloy
Body	Anodized aluminium alloy
Springs	Stainless steel
Seals	NBR rubber
Spool	Anodized aluminium alloy
Piston	Anodized aluminium alloy

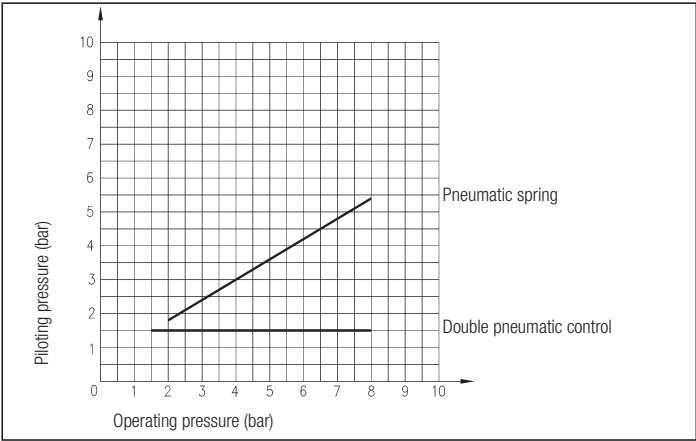
SPARE PARTS

SEALS KIT	
5/2 monstable and bistable - G1/8	MEK/SG/8
5/3 closed centre - G1/8	MEK/CC/SG/8
5/3 open centre - G1/8	MEK/CA/SG/8
5/3 pressure centre - G1/8	MEK/CP/SG/8
5/2 monstable e bistable - G1/4	MEK/SG/4
5/3 closed centre - G1/4	MEK/CC/SG/4
5/3 open centre - G1/4	MEK/CA/SG/4
5/3 pressure centre - G1/4	MEK/CP/SG/4

PILOTING CHART - MEK G 1/8



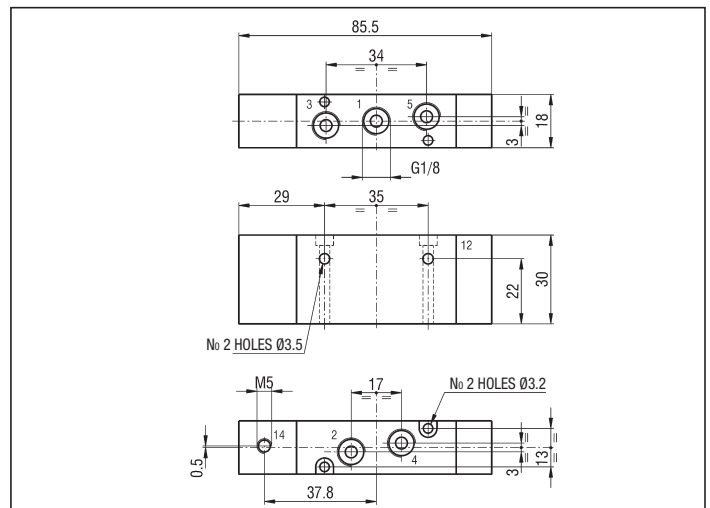
PILOTING CHART - MEK G 1/4



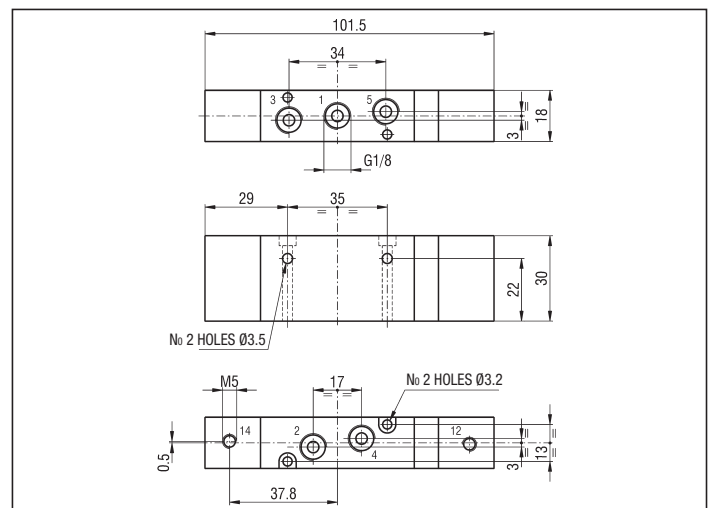
## 2

**\*/EX** Consistent with the ATEX directive  II 2GD c T5 T100°C - 10°C ≤ Ta ≤ 60°C ES.: **MEKCA8 KR/ZQ/EX**

## MEKCA8 KR/TQ



MEKCA8 SR/SR - MEKCA8 AR/AR - MEKCA8 PR/PR



series

MEK

G 1/8 - 5 PORT

SOLENOID ACTUATED VALVES G 1/8

Symbol	Function	Controls		Response time at 6 bar (ms)		Flow rate at 6 bar ΔP = 1 bar (l/min)	Weight (g)	TYPE*
		Pilot	Return	Energized	De-energized			
	5/2 monostable	Solenoid	Pneumomechanical spring	12	15	530	150	MEKCA8 KUC/ZQ
		Solenoid	Pneumatic spring	12	15			MEKCA8 KUC/TQ
		Solenoid pilot assisted	Pneumomechanical spring	10	20			MEKCA8 KUR/ZQ
	5/2 bistable	Solenoid	Solenoid	9	9	530	195	MEKCA8 KUC/KUC
		Solenoid pilot assisted	Solenoid pilot assisted					MEKCA8 KUR/KUR
	5/3 closed centre	Solenoid	Mechanical spring	10	25	450	210	MEKCA8 SUC/SUC
		Solenoid pilot assisted	Mechanical spring					MEKCA8 SUR/SUR
	5/3 open centre	Solenoid	Mechanical spring	10	25	450	210	MEKCA8 AUC/AUC
		Solenoid pilot assisted	Mechanical spring					MEKCA8 AUR/AUR
	5/3 pressure centre	Solenoid	Mechanical spring	10	25	450	210	MEKCA8 PUC/PUC
		Solenoid pilot assisted	Mechanical spring					MEKCA8 PUR/PUR

\* SPECIFY THE VOLTAGE IN THE ORDER - E.G.: MEKCA8 KUC/ZQ 02400

/EX Consistent with the ATEX directive

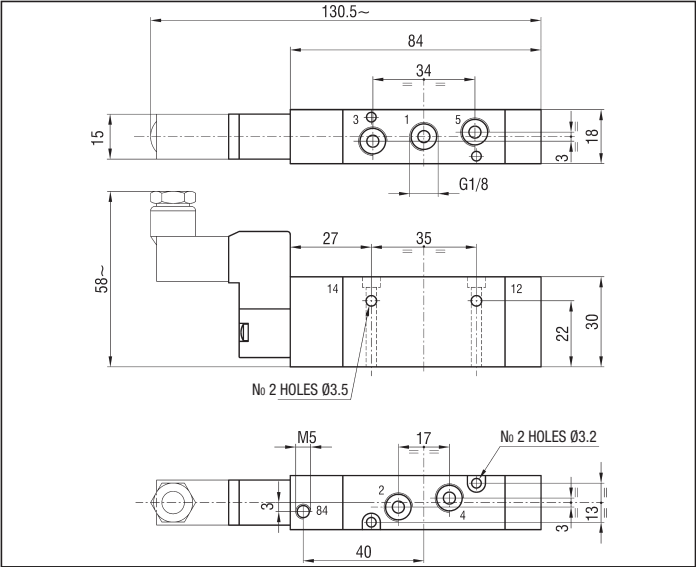
II 3G c Ex nA IIC T5 Gc -5°C≤Tas≤50°C  
II 3D c Ex tc IIIC T100°C IP65 Dc

02400 = 24 V DC  
02450-60 = 24 V AC

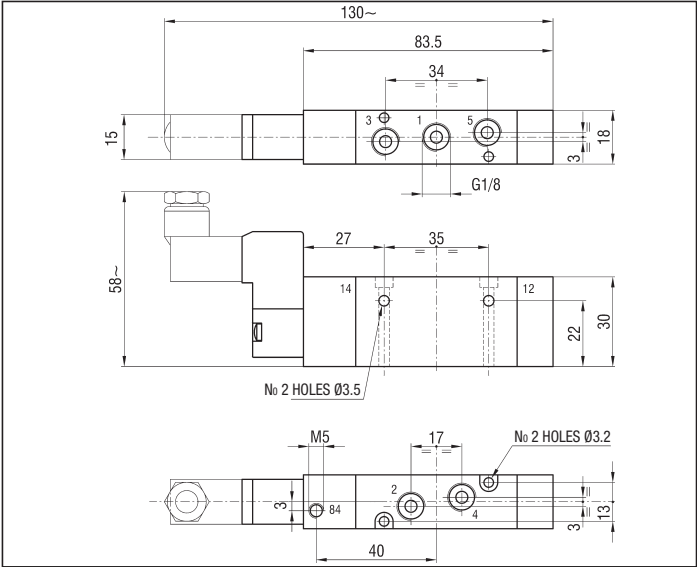
11050-60 = 110 V AC  
22050-60 = 220 V AC

E.G.: MEKCA8 KUC/ZQ 02400/EX

MEKCA8 KUC/ZQ



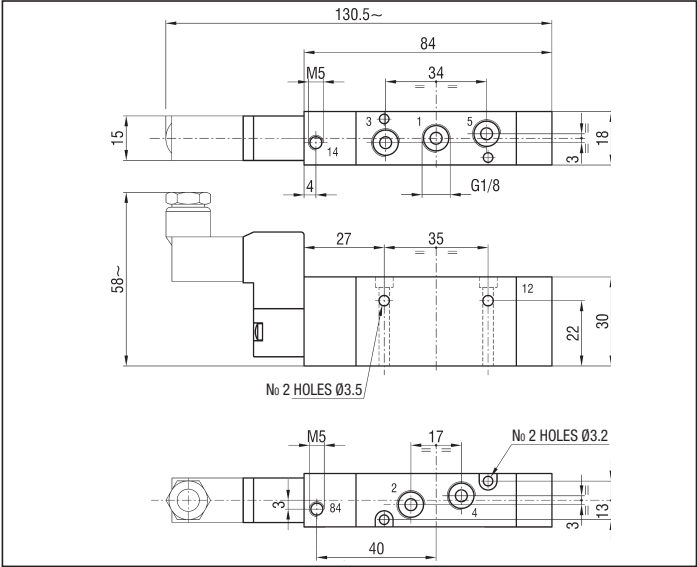
MEKCA8 KUC/TQ



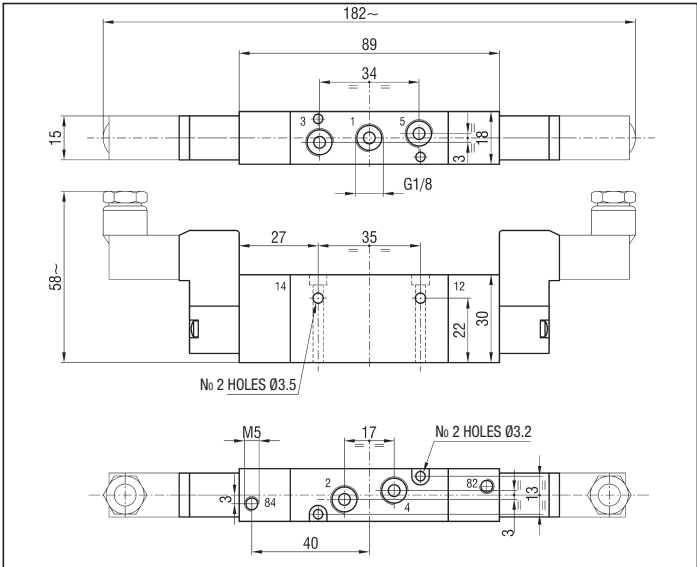
G 1/8 - 5 PORT

series **MEK**

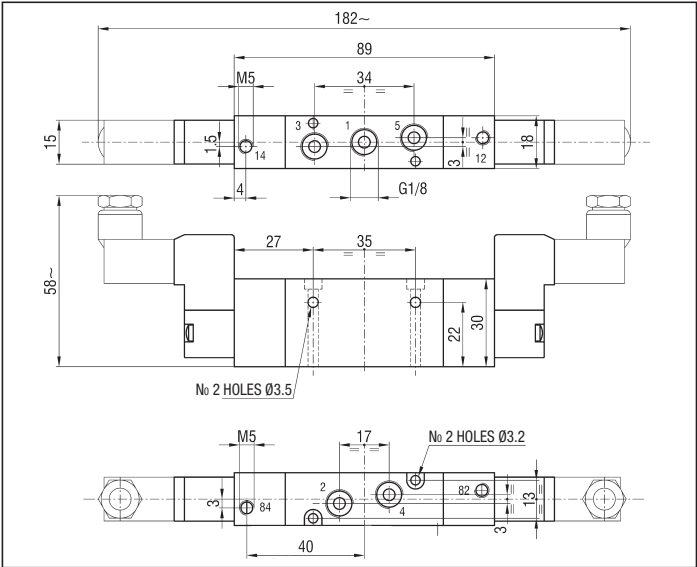
MEKCA8 KUR/ZQ



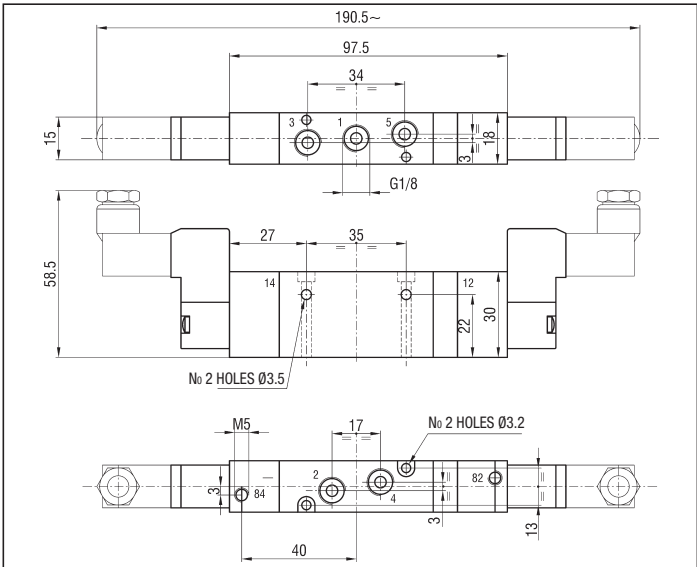
MEKCA8 KUC/KUC



MEKCA8 KUR/KUR



MEKCA8 SUC/SUC - MEKCA8 AUC/AUC - MEKCA8 PUC/PUC



MEKCA8 SUR/SUR - MEKCA8 AUR/AUR - MEKCA8 PUR/PUR

