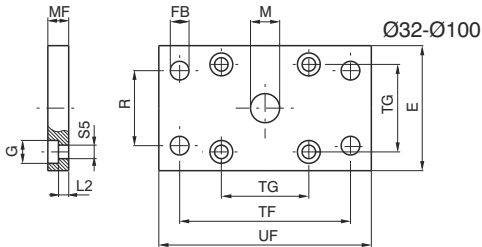
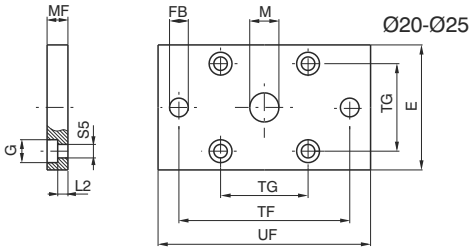
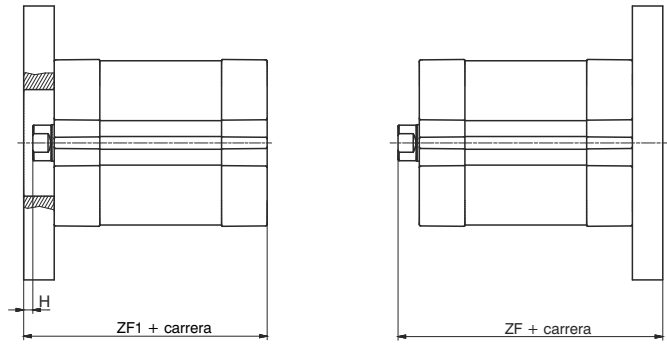


Brida (MF2)

Código de pedido

Ø20-Ø25: **1540.Ø.03F**
Ø32-Ø100: **1380.Ø.03F**

La confección comprende:
n°1 brida (acero cincado)
n°4 tornillos (acero cincado)



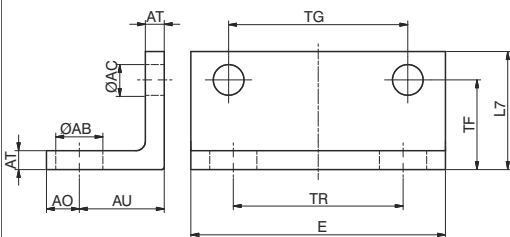
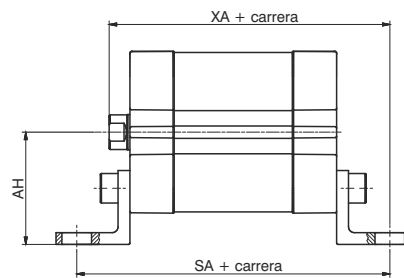
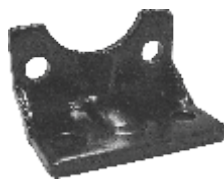
Diámetro	Ø20	Ø25	Ø32	Ø40	Ø50	Ø63	Ø80	Ø100
E	35	40	45	52	65	75	95	115
FB (H 13)	6,6	6,6	7	9	9	9	12	14
G	9,5	9,5	10,5	10,5	15	15	18	18
M (H 11)	16	16	30	35	40	45	45	55
MF (JS 14)	8	8	10	10	12	12	16	16
R (JS 14)	/	/	32	36	45	50	63	75
TF (JS 14)	55	60	64	72	90	100	126	150
TG	22	26	32,5	38	46,5	56,5	72	89
UF	70	75	80	90	110	120	150	170
ZF	51	53	130	145	155	170	190	205
ZF1	45	47	54	55	57	61	70	83
H	2	2	3	3	4	4	6	6
L2	3	3	5	5	6,5	6,5	8	8
S5	5,5	5,5	6,6	6,6	9	9	11	11
Peso gr.	125	160	190	250	480	620	1430	1990

Pata (MS1)

Código de pedido

1540.Ø.05/1F

La confección comprende:
n°1 pata (acero cincado)
n°2 tornillos (acero cincado)



Diámetro	Ø20	Ø25	Ø32	Ø40	Ø50	Ø63	Ø80	Ø100
AB (H 14)	7	7	7	10	10	10	12	14,5
AC	5,5	5,5	6,5	6,5	8,5	8,5	10,5	10,5
AH	27	29	33,5	38	45	50	63	74
AO (max)	7	7	7	7	9	9	11	13
AT (±0,5)	4	4	4	4	5	5	6	6
AU (±0,2)	16	16	16	18	21	21	26	27
E (max)	35,5	39,5	46,5	54	65	77	95	115
L7	20	20	25	25	30	30	40	45
TF (±0,1)	16	16	17,25	19	21,75	21,75	27	29,5
TG (±0,2)	22	26	32,5	38	46,5	56,5	72	89
TR (JS 14)	22	26	32	36	45	50	63	75
SA	69	71	76	81	87	91	106	121
XA	59	61	67	70	74	78	90	104
Peso gr.	40	45	60	70	130	160	300	405