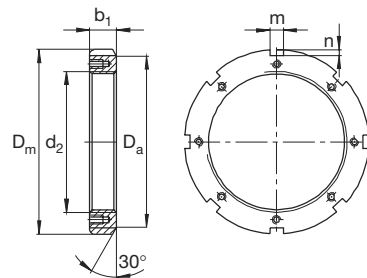


## Tuercas ranuradas FAG



HM30, HM31

Rosca	Dimensiones					Peso ≈ Tuerca	Denominación abreviada	
	D <sub>m</sub>	b <sub>1</sub>	D <sub>a</sub>	m	n		Tuerca	Elemento de seguridad apropiado
d <sub>2</sub>	mm					kg	FAG	FAG
<b>Tr440x5</b>	520	60	490	32	15	26,5	<b>HM3088</b>	MS3088
<b>Tr440x5</b>	560	70	510	36	20	44,3	<b>HM3188</b>	MS3188
<b>Tr460x5</b>	540	60	510	32	15	27,7	<b>HM3092</b>	MS3088
<b>Tr460x5</b>	580	75	540	36	20	53,8	<b>HM3192</b>	MS3188
<b>Tr480x5</b>	560	60	530	36	15	28,7	<b>HM3096</b>	MS3096
<b>Tr480x5</b>	620	75	560	36	20	62,2	<b>HM3196</b>	MS3196
<b>Tr500x5</b>	580	68	550	36	15	34	<b>HM30/500</b>	MS3096
<b>Tr500x5</b>	630	80	580	40	23	62,1	<b>HM31/500</b>	MS31/500
<b>Tr530x6</b>	630	68	590	40	20	44,7	<b>HM30/530</b>	MS30/530
<b>Tr530x6</b>	670	80	610	40	23	71,2	<b>HM31/530</b>	MS31/530
<b>Tr560x6</b>	650	75	610	40	20	46,2	<b>HM30/560</b>	MS30/560
<b>Tr560x6</b>	710	85	650	45	25	85,6	<b>HM31/560</b>	MS31/560
<b>Tr600x6</b>	700	75	660	40	20	55,9	<b>HM30/600</b>	MS30/530
<b>Tr600x6</b>	750	85	690	45	25	91,7	<b>HM31/600</b>	MS31/560
<b>Tr630x6</b>	730	75	690	45	20	58,3	<b>HM30/630</b>	MS30/630
<b>Tr630x6</b>	800	95	730	50	28	122	<b>HM31/630</b>	MS31/630
<b>Tr670x6</b>	780	80	740	45	20	73,8	<b>HM30/670</b>	MS30/670
<b>Tr670x6</b>	850	106	775	50	28	156	<b>HM31/670</b>	MS31/670
<b>Tr710x7</b>	830	90	780	50	25	94,8	<b>HM30/710</b>	MS30/710
<b>Tr710x7</b>	900	106	825	55	30	173	<b>HM31/710</b>	MS31/710
<b>Tr750x7</b>	870	90	820	55	25	99,5	<b>HM30/750</b>	MS30/750
<b>Tr750x7</b>	950	112	875	60	34	202	<b>HM31/750</b>	MS31/750
<b>Tr800x7</b>	920	90	870	55	25	106	<b>HM30/800</b>	MS30/750
<b>Tr800x7</b>	1000	112	925	60	34	215	<b>HM31/800</b>	MS31/750
<b>Tr850x7</b>	980	90	925	60	25	113	<b>HM30/850</b>	MS30/850
<b>Tr850x7</b>	1060	118	975	70	38	246	<b>HM31/850</b>	MS31/850
<b>Tr900x7</b>	1030	100	975	60	25	135	<b>HM30/900</b>	MS30/850
<b>Tr900x7</b>	1120	125	1030	70	38	293	<b>HM31/900</b>	MS31/900

## Tuercas ranuradas FAG

Rosca	Dimensiones					Peso ≈ Tuerca	Denominación abreviada	
	D <sub>m</sub>	b <sub>1</sub>	D <sub>a</sub>	m	n		Tuerca	Elemento de seguridad apropiado
d <sub>2</sub>	mm					kg	FAG	FAG
<b>Tr950x8</b>	1080	100	1025	60	25	143	<b>HM30/950</b>	MS30/950
<b>Tr950x8</b>	1170	125	1080	70	38	310	<b>HM31/950</b>	MS31/950
<b>Tr1000x8</b>	1140	100	1085	60	25	165	<b>HM30/1000</b>	MS30/1000
<b>Tr1000x8</b>	1240	125	1140	70	38	361	<b>HM31/1000</b>	MS31/1000
<b>Tr1060x8</b>	1200	100	1145	60	25	175	<b>HM30/1060</b>	MS30/1000
<b>Tr1060x8</b>	1300	125	1210	70	38	386	<b>HM31/1060</b>	MS31/1000
<b>Tr1120x8</b>	1260	100	1205	60	25	185	<b>HM30/1120</b>	MS30/1000
<b>Tr1120x8</b>	1360	125	1270	70	38	427	<b>HM31/1120</b>	MS31/1000
<b>Tr1180x8</b>	1320	100	1265	60	25	196	<b>HM30/1180</b>	MS30/1000
<b>Tr1180x8</b>	1420	125	1330	70	38	459	<b>HM31/1180</b>	MS31/1000
<b>Tr1250x8</b>	1390	110	1335	60	25	233	<b>HM30/1250</b>	MS30/1000
<b>Tr1250x8</b>	1490	125	1400	70	38	485	<b>HM31/1250</b>	MS31/1000
<b>Tr1320x8</b>	1460	110	1405	60	25	245	<b>HM30/1320</b>	MS30/1000
<b>Tr1320x8</b>	1560	125	1470	70	38	511	<b>HM31/1320</b>	MS31/1000
<b>Tr1400x8</b>	1540	110	1485	60	25	259	<b>HM30/1400</b>	MS30/1000
<b>Tr1400x8</b>	1640	130	1550	70	38	562	<b>HM31/1400</b>	MS31/1000
<b>Tr1500x8</b>	1650	110	1595	60	25	297	<b>HM30/1500</b>	MS30/1000
<b>Tr1500x8</b>	1740	130	1650	70	38	601	<b>HM31/1500</b>	MS31/1000