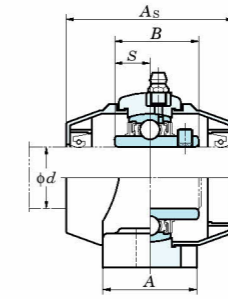
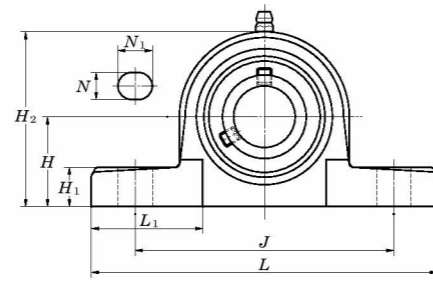
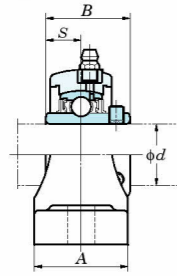


UCVP-S6
Cylindrical bore (with set screws)
 d 20 ~ 50 mm



Variations of tolerance of distance from mounting bottom to center of spherical bore (ΔH_s)

Housing No.	Unit: mm ΔH_s
VP204-VP208	± 0.15

Shaft Dia. mm inch d	Dimensions inch mm											Bolt Size inch mm	Standard			Mass kg	Basic Load Ratings kN		Factor f_0	With Plastic Cover			
	H	L	A	J	N	N_1	H_1	H_2	B	S	Unit No.		Housing No.	Bearing No.	Open Type		One Side Closed Type	Dimension mm inch A_s		Mass kg			
20 $\frac{3}{4}$	$1\frac{5}{16}$	5	$1\frac{1}{2}$	$3\frac{3}{4}$	$\frac{7}{16}$	$\frac{9}{16}$	$\frac{9}{16}$	$2\frac{19}{32}$	1.220	0.500	$\frac{3}{8}$	UCVP204-12S6 UCVP204S6	VP204	UC204-12S6 UC204S6		10.9	5.35	13.2	UCVP204-12CS6 UCVP204CS6	UCVP204-12CDS6 UCVP204CDS6	63	$2\frac{15}{32}$	0.31
	$\frac{7}{8}$ $\frac{15}{16}$	$1\frac{7}{16}$	$5\frac{17}{32}$	$1\frac{1}{2}$	$4\frac{1}{8}$	$\frac{7}{16}$	$\frac{9}{16}$	$\frac{5}{8}$	$2\frac{25}{32}$	1.343	0.563	$\frac{3}{8}$	UCVP205-14S6 UCVP205-15S6 UCVP205S6 UCVP205-16S6	VP205	UC205-14S6 UC205-15S6 UC205S6 UC205-16S6		11.9	6.3	13.9	UCVP205-14CS6 UCVP205-15CS6 UCVP205CS6 UCVP205-16CS6	UCVP205-14CDS6 UCVP205-15CDS6 UCVP205CDS6 UCVP205-16CDS6	68	$2\frac{11}{16}$
30 $1\frac{3}{16}$ $1\frac{1}{4}$	$1\frac{11}{16}$	$6\frac{13}{32}$	$1\frac{13}{16}$	$4\frac{11}{16}$	$\frac{9}{16}$	$\frac{23}{32}$	$\frac{11}{16}$	$3\frac{5}{16}$	1.500	0.626	$\frac{1}{2}$	UCVP206-18S6 UCVP206S6 UCVP206-19S6 UCVP206-20S6	VP206	UC206-18S6 UC206S6 UC206-19S6 UC206-20S6		16.5	9.05	13.9	UCVP206-18CS6 UCVP206CS6 UCVP206-19CS6 UCVP206-20CS6	UCVP206-18CDS6 UCVP206CDS6 UCVP206-19CDS6 UCVP206-20CDS6	79	$3\frac{1}{8}$	0.63
	$1\frac{1}{4}$ $1\frac{5}{16}$ $1\frac{3}{8}$	$1\frac{7}{8}$	$6\frac{5}{8}$	$1\frac{7}{8}$	5	$\frac{9}{16}$	$\frac{23}{32}$	$\frac{23}{32}$	$3\frac{23}{32}$	1.689	0.689	$\frac{1}{2}$	UCVP207-20S6 UCVP207-21S6 UCVP207-22S6 UCVP207S6 UCVP207-23S6	VP207	UC207-20S6 UC207-21S6 UC207-22S6 UC207S6 UC207-23S6		21.8	12.3	13.9	UCVP207-20CS6 UCVP207-21CS6 UCVP207-22CS6 UCVP207CS6 UCVP207-23CS6	UCVP207-20CDS6 UCVP207-21CDS6 UCVP207-22CDS6 UCVP207CDS6 UCVP207-23CDS6	85	$3\frac{11}{32}$
40 $1\frac{1}{2}$ $1\frac{9}{16}$	$1\frac{15}{16}$	$7\frac{1}{4}$	$2\frac{1}{8}$	$5\frac{13}{32}$	$\frac{9}{16}$	$\frac{23}{32}$	$\frac{25}{32}$	$3\frac{31}{32}$	1.937	0.748	$\frac{1}{2}$	UCVP208-24S6 UCVP208-25S6 UCVP208S6	VP208	UC208-24S6 UC208-25S6 UC208S6		24.8	14.3	14.0	UCVP208-24CS6 UCVP208-25CS6 UCVP208CS6	UCVP208-24CDS6 UCVP208-25CDS6 UCVP208CDS6	96	$3\frac{25}{32}$	1.10
	$1\frac{5}{8}$ $1\frac{11}{16}$ $1\frac{3}{4}$	$2\frac{1}{8}$	$7\frac{9}{16}$	$2\frac{1}{8}$	$5\frac{3}{4}$	$\frac{21}{32}$	$\frac{25}{32}$	$\frac{29}{32}$	$4\frac{3}{16}$	1.937	0.748	$\frac{5}{8}$	UCVP209-26S6 UCVP209-27S6 UCVP209-28S6 UCVP209S6	VP209	UC209-26S6 UC209-27S6 UC209-28S6 UC209S6		27.8	16.2	14.0	UCVP209-26CS6 UCVP209-27CS6 UCVP209-28CS6 UCVP209CS6	UCVP209-26CDS6 UCVP209-27CDS6 UCVP209-28CDS6 UCVP209CDS6	107	$4\frac{7}{32}$
50 $1\frac{7}{8}$ $1\frac{15}{16}$ 2	$2\frac{1}{4}$	$8\frac{1}{8}$	$2\frac{3}{8}$	$6\frac{1}{4}$	$\frac{21}{32}$	$\frac{25}{32}$	$\frac{29}{32}$	$4\frac{1}{2}$	2.031	0.748	$\frac{5}{8}$	UCVP210-30S6 UCVP210-31S6 UCVP210S6 UCVP210-32S6	VP210	UC210-30S6 UC210-31S6 UC210S6 UC210-32S6		29.8	18.6	14.4	UCVP210-30CS6 UCVP210-31CS6 UCVP210CS6 UCVP210-32CS6	UCVP210-30CDS6 UCVP210-31CDS6 UCVP210CDS6 UCVP210-32CDS6	120	$4\frac{23}{32}$	1.46

Remarks 1. In Part No. of unit and units with covers, fitting codes follow bore diameter numbers. (See Table 10.5 in P.51.)
2. Part No. of the applicable grease fitting is A-1/4-28UNFN12.
3. For the dimensions and forms of applicable bearings, see the dimensional tables of ball bearing for unit.