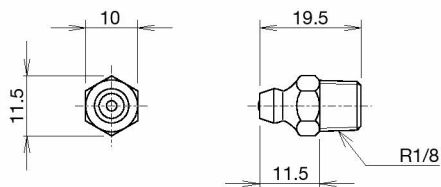


## Option



Grease nipple (type A-PT1/8)

\* Accessories for lubrication (piping joint, grease fitting, etc.) other than the standard option may also be attached.

For inquiry, contact THK (for other accessories for lubrication, see section "Lubrication Accessories" in the general catalog).

Unit: mm

Mass [kg]	Mounting hole dimensions				Model No.
	Inner ring PCD <sub>1</sub>	Mounting hole	Outer ring PCD <sub>2</sub>	Mounting hole	
12	184	24-φ7 through φ11 counterbore depth 24.5	270	24-φ7 through φ11 counterbore depth 24.5	RW228 (G)
		24-M6 depth 18			RW228X
22	240	24-φ9.3 through φ14.5 counterbore depth 28	350	24-φ9.3 through φ14.5 counterbore depth 28	RW297 (G)
		24-M8 depth 24			RW297X
47	385	32-φ9.3 through φ14.5 counterbore depth 35	505	32-φ9.3 through φ14.5 counterbore depth 35	RW445 (G)
		32-M8 depth 24			RW445X

# Model Number Coding

**RW297 UU CC0 P2 B G X -N**

## Option symbol

No Symbol : No accessory

-N : Grease nipple attached (A-PT1/8)

## Inner Ring Hole symbol

No Symbol : Inner ring counterbore hole

X : Inner ring tapped hole (through hole)

## Mounting Hole Orientation symbol [excluding X type]

No Symbol : The counterbore holes of the inner and outer rings face the same direction

G : The counterbore holes of the inner and outer rings face opposite direction

## Sub-part Accuracy symbol

No Symbol : Rotational Accuracy of the Inner Ring

R : Rotational Accuracy of the Outer Ring

B : Rotational Accuracy of the Inner/Outer Rings

## Accuracy symbol

No Symbol : 5-grade rotational accuracy

P4 : 4-grade rotational accuracy

P2 : 2-grade rotational accuracy

USP : USP-grade rotational accuracy

TSP : USP-grade rotational accuracy

+ wobbling accuracy

## Radial clearance symbol

CC0 :Minus clearance (preload)

## Seal symbol

No Symbol : Without seal

UU : Seal attached on both ends

U : Seal attached on either end

(counterbore side of the outer ring)

UT : Seal attached on either end

(opposite to the counter-bore of the outer ring)

## Model No.