

2.2 Technical principles

Module pitches straight toothed

Tooth rack: Pressure angle $\alpha = 20^\circ$
ground, soft or hardened

Outer surfaces: ground on all sides

Quality: 6 in accordance with DIN 3962, 3963, 3967

f_p (mm) Single pitch deviation
Module ≤ 3 : 0.006
Module > 3 : 0.008

F_p (mm) Total pitch deviation
 $F_p/1000$ (mm) 0,040 for a 1000 mm Length

Fig. 1

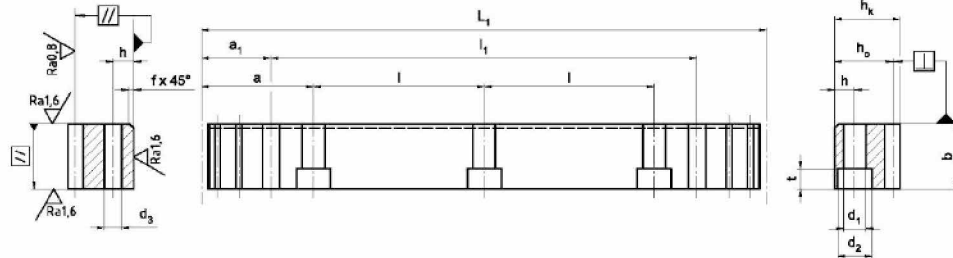


Fig. 2

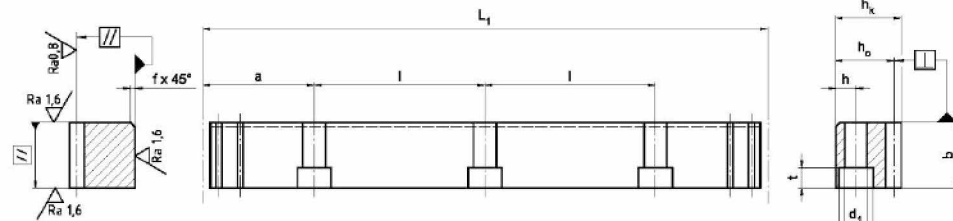
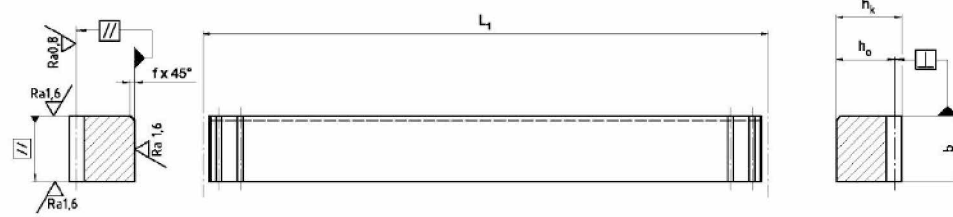


Fig. 3



| Standard lengths | m ¹⁾ | p ⁴⁾ | L ₁ | z ²⁾ | b | h _k | h _o | f | a | l | n ³⁾ | h | d ₁ | d ₂ | t | a ₁ | l ₁ | d ₃ | Dimensions kg |
|--------------------------------|-----------------|-----------------|----------------|-----------------|-----|----------------|----------------|----|------|--------|-----------------|----|----------------|----------------|----|----------------|----------------|----------------|------------------|
| | - | mm | mm | - | mm | mm | mm | mm | mm | mm | - | mm | mm | mm | mm | mm | mm | mm | |
| ZST M2 - 24 x 24 x 1005 - G | 2 | 6.28 | 1005.3 | 160 | 24 | 24 | 22 | 2 | 62.8 | 125.66 | 8 | 8 | 7 | 11 | 7 | 31.3 | 942.7 | 5.7 | 4.2 |
| ZST M2 - 24 x 24 x 2010 - G | 2 | 6.28 | 2010.6 | 320 | 24 | 24 | 22 | 2 | 62.8 | 125.66 | 16 | 8 | 7 | 11 | 7 | 31.3 | 1948.0 | 5.7 | 8.4 |
| MST M2 - 24 x 24 x 201 - G | 2 | 6.28 | 201.0 | 32 | 24 | 24 | 22 | | | | | | | | | | | | 0.8 |
| ZST M3 - 29 x 29 x 1017 - G | 3 | 9.42 | 1017.9 | 108 | 29 | 29 | 26 | 2 | 63.6 | 127.23 | 8 | 9 | 10 | 15 | 9 | 34.4 | 949.1 | 7.7 | 6.0 |
| ZST M3 - 29 x 29 x 2035 - G | 3 | 9.42 | 2035.8 | 216 | 29 | 29 | 26 | 2 | 63.6 | 127.23 | 16 | 9 | 10 | 15 | 9 | 34.4 | 1967.0 | 7.7 | 12.0 |
| MST M3 - 29 x 29 x 198 - G | 3 | 9.42 | 198.0 | 21 | 29 | 29 | 26 | | | | | | | | | | | | 1.2 |
| ZST M4 - 39 x 39 x 1005 - G | 4 | 12.57 | 1005.3 | 80 | 39 | 39 | 35 | 3 | 62.8 | 125.66 | 8 | 12 | 10 | 15 | 9 | 37.5 | 930.3 | 7.7 | 10.7 |
| ZST M4 - 39 x 39 x 2010 - G | 4 | 12.57 | 2010.6 | 160 | 39 | 39 | 35 | 3 | 62.8 | 125.66 | 16 | 12 | 10 | 15 | 9 | 37.5 | 1935.6 | 7.7 | 21.4 |
| MST M4 - 39 x 39 x 201 - G | 4 | 12.57 | 201.0 | 16 | 39 | 39 | 35 | | | | | | | | | | | | 2.2 |
| ZST M5 - 49 x 39 x 1005 - G | 5 | 15.70 | 1005.3 | 64 | 49 | 39 | 34 | 3 | 62.8 | 125.66 | 8 | 12 | 14 | 20 | 13 | 30.1 | 945.0 | 11.7 | 13.1 |
| ZST M5 - 49 x 39 x 2010 - G | 5 | 15.70 | 2010.6 | 128 | 49 | 39 | 34 | 3 | 62.8 | 125.66 | 16 | 12 | 14 | 20 | 13 | 30.1 | 1950.4 | 11.7 | 26.2 |
| MST M5 - 49 x 39 x 204 - G | 5 | 15.70 | 204.0 | 13 | 49 | 39 | 34 | | | | | | | | | | | | 2.7 |
| ZST M6 - 59 x 49 x 1017 - G | 6 | 18.80 | 1017.9 | 54 | 59 | 49 | 43 | 3 | 63.6 | 127.23 | 8 | 16 | 18 | 26 | 17 | 31.4 | 955.0 | 15.7 | 20.2 |
| ZST M6 - 59 x 49 x 2035 - G | 6 | 18.80 | 2035.8 | 108 | 59 | 49 | 43 | 3 | 63.6 | 127.23 | 16 | 16 | 18 | 26 | 17 | 31.4 | 1973.0 | 15.7 | 40.4 |
| MST M6 - 59 x 49 x 207 - G | 6 | 18.80 | 207.0 | 11 | 59 | 49 | 43 | | | | | | | | | | | | 4.1 |
| ZST M8 - 79 x 79 x 1005 - G | 8 | 25.10 | 1005.3 | 40 | 79 | 79 | 71 | 3 | 62.8 | 125.66 | 8 | 25 | 22 | 33 | 21 | 26.6 | 952.0 | 19.7 | 44.3 |
| ZST M8 - 79 x 79 x 2010 - G | 8 | 25.10 | 2010.6 | 80 | 79 | 79 | 71 | 3 | 62.8 | 125.66 | 16 | 25 | 22 | 33 | 21 | 26.6 | 1957.3 | 19.7 | 88.6 |
| MST M8 - 79 x 79 x 201 - G | 8 | 25.10 | 201.0 | 8 | 79 | 79 | 71 | | | | | | | | | | | | 8.9 |
| ZST M10 - 99 x 99 x 1005 - G | 10 | 31.40 | 1005.3 | 32 | 99 | 99 | 89 | 3 | 62.8 | 125.66 | 8 | 32 | 33 | 48 | 32 | 125.7 | 754.0 | 19.7 | 68.7 |
| MST M10 - 79 x 79 x 219 - G | 10 | 31.40 | 219.0 | 7 | 79 | 79 | 69 | | | | | | | | | | | | 10.2 |
| ZST M12 - 120 x 120 x 1017 - G | 12 | 37.70 | 1017.9 | 27 | 120 | 120 | 108 | 3 | 63.6 | 127.23 | 8 | 40 | 39 | 58 | 38 | 127.2 | 763.4 | 19.7 | 109.0 |
| MST M12 - 99 x 99 x 263 - G | 12 | 37.70 | 263.0 | 7 | 99 | 99 | 87 | | | | | | | | | | | | 19.0 |

¹⁾ m Module ³⁾ n Number of holes
²⁾ z Number of teeth ⁴⁾ p Pitch (p=m*π)

any other lengths on request

2.2 Technical principles

Module pitches straight toothed

Tooth rack: Pressure angle $\alpha = 20^\circ$
milled, soft
Outer surfaces: ground on all sides

Quality: 8 in accordance with DIN 3962, 3963, 3967
F_p (mm) Total pitch deviation
F_p/1000 (mm) 0,150 for a 1000 mm Length

Fig. 1

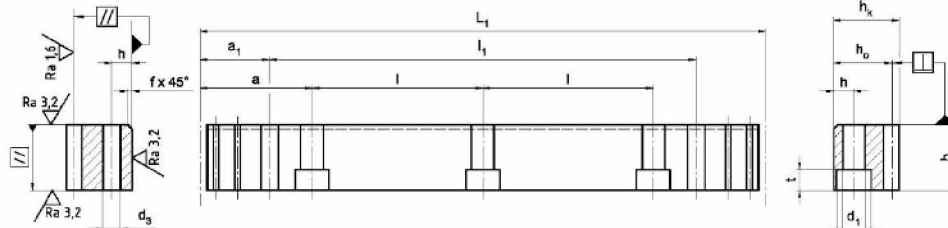


Fig. 2

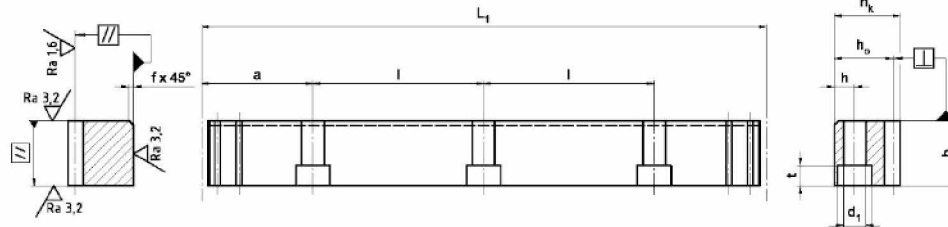
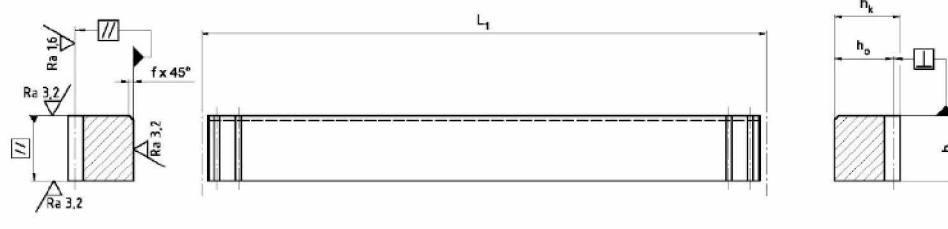


Fig. 3



| Standard lengths | m ¹⁾ | p ⁴⁾ | L ₁ | z ²⁾ | b | h _k | h ₀ | f | a | l | n ³⁾ | h | d ₁ | d ₂ | t | a ₁ | l ₁ | d ₃ | Dimensions |
|--------------------------------|-----------------|-----------------|----------------|-----------------|-----|----------------|----------------|----|------|--------|-----------------|----|----------------|----------------|----|----------------|----------------|----------------|------------|
| | - | mm | mm | - | mm | mm | mm | mm | mm | mm | - | mm | mm | mm | mm | mm | mm | mm | kg |
| ZST M2 - 24 x 24 x 1005 - G | 2 | 6.28 | 1005.3 | 160 | 24 | 24 | 22 | 2 | 62.8 | 125.66 | 8 | 8 | 7 | 11 | 7 | 31.3 | 942.7 | 5.7 | 4.2 |
| ZST M2 - 24 x 24 x 2010 - G | 2 | 6.28 | 2010.6 | 320 | 24 | 24 | 22 | 2 | 62.8 | 125.66 | 16 | 8 | 7 | 11 | 7 | 31.3 | 1948.0 | 5.7 | 8.4 |
| MST M2 - 24 x 24 x 201 - G | 2 | 6.28 | 201.0 | 32 | 24 | 24 | 22 | | | | | | | | | | | | 0.8 |
| ZST M3 - 29 x 29 x 1017 - G | 3 | 9.42 | 1017.9 | 108 | 29 | 29 | 26 | 2 | 63.6 | 127.23 | 8 | 9 | 10 | 15 | 9 | 34.4 | 949.1 | 7.7 | 6.0 |
| ZST M3 - 29 x 29 x 2035 - G | 3 | 9.42 | 2035.8 | 216 | 29 | 29 | 26 | 2 | 63.6 | 127.23 | 16 | 9 | 10 | 15 | 9 | 34.4 | 1967.0 | 7.7 | 12.0 |
| MST M3 - 29 x 29 x 198 - G | 3 | 9.42 | 198.0 | 21 | 29 | 29 | 26 | | | | | | | | | | | | 1.2 |
| ZST M4 - 39 x 39 x 1005 - G | 4 | 12.57 | 1005.3 | 80 | 39 | 39 | 35 | 3 | 62.8 | 125.66 | 8 | 12 | 10 | 15 | 9 | 37.5 | 930.3 | 7.7 | 10.7 |
| ZST M4 - 39 x 39 x 2010 - G | 4 | 12.57 | 2010.6 | 160 | 39 | 39 | 35 | 3 | 62.8 | 125.66 | 16 | 12 | 10 | 15 | 9 | 37.5 | 1935.6 | 7.7 | 21.4 |
| MST M4 - 39 x 39 x 201 - G | 4 | 12.57 | 201.0 | 16 | 39 | 39 | 35 | | | | | | | | | | | | 2.2 |
| ZST M5 - 49 x 39 x 1005 - G | 5 | 15.70 | 1005.3 | 64 | 49 | 39 | 34 | 3 | 62.8 | 125.66 | 8 | 12 | 14 | 20 | 13 | 30.1 | 945.0 | 11.7 | 13.1 |
| ZST M5 - 49 x 39 x 2010 - G | 5 | 15.70 | 2010.6 | 128 | 49 | 39 | 34 | 3 | 62.8 | 125.66 | 16 | 12 | 14 | 20 | 13 | 30.1 | 1950.4 | 11.7 | 26.2 |
| MST M5 - 49 x 39 x 204 - G | 5 | 15.70 | 204.0 | 13 | 49 | 39 | 34 | | | | | | | | | | | | 2.7 |
| ZST M6 - 59 x 49 x 1017 - G | 6 | 18.80 | 1017.9 | 54 | 59 | 49 | 43 | 3 | 63.6 | 127.23 | 8 | 16 | 18 | 26 | 17 | 31.4 | 955.0 | 15.7 | 20.2 |
| ZST M6 - 59 x 49 x 2035 - G | 6 | 18.80 | 2035.8 | 108 | 59 | 49 | 43 | 3 | 63.6 | 127.23 | 16 | 16 | 18 | 26 | 17 | 31.4 | 1973.0 | 15.7 | 40.4 |
| MST M6 - 59 x 49 x 207 - G | 6 | 18.80 | 207.0 | 11 | 59 | 49 | 43 | | | | | | | | | | | | 4.1 |
| ZST M8 - 79 x 79 x 1005 - G | 8 | 25.10 | 1005.3 | 40 | 79 | 79 | 71 | 3 | 62.8 | 125.66 | 8 | 25 | 22 | 33 | 21 | 26.6 | 952.0 | 19.7 | 44.3 |
| ZST M8 - 79 x 79 x 2010 - G | 8 | 25.10 | 2010.6 | 80 | 79 | 79 | 71 | 3 | 62.8 | 125.66 | 16 | 25 | 22 | 33 | 21 | 26.6 | 1957.3 | 19.7 | 88.6 |
| MST M8 - 79 x 79 x 201 - G | 8 | 25.10 | 201.0 | 8 | 79 | 79 | 71 | | | | | | | | | | | | 8.9 |
| ZST M10 - 99 x 99 x 1005 - G | 10 | 31.40 | 1005.3 | 32 | 99 | 99 | 89 | 3 | 62.8 | 125.66 | 8 | 32 | 33 | 48 | 32 | 125.7 | 754.0 | 19.7 | 68.7 |
| MST M10 - 79 x 79 x 219 - G | 10 | 31.40 | 219.0 | 7 | 79 | 79 | 69 | | | | | | | | | | | | 10.2 |
| ZST M12 - 120 x 120 x 1017 - G | 12 | 37.70 | 1017.9 | 27 | 120 | 120 | 108 | 3 | 63.6 | 127.23 | 8 | 40 | 39 | 58 | 38 | 127.2 | 763.4 | 19.7 | 109.0 |
| MST M12 - 99 x 99 x 263 - G | 12 | 37.70 | 263.0 | 7 | 99 | 99 | 87 | | | | | | | | | | | | 19.0 |

¹⁾ m Module ³⁾ n Number of holes
²⁾ z Number of teeth ⁴⁾ p Pitch (p=m*π)

any other lengths on request

2.2 Technical principles

Module pitches straight toothed

Tooth rack: Pressure angle $\alpha = 20^\circ$
milled, nitrided

Outer surfaces: ground on all sides

Quality: 9 in accordance with DIN 3962, 3963, 3967

F_p (mm) Total pitch deviation

F_p/1000 (mm) 0.180 for a 1000 mm Length

Fig. 1

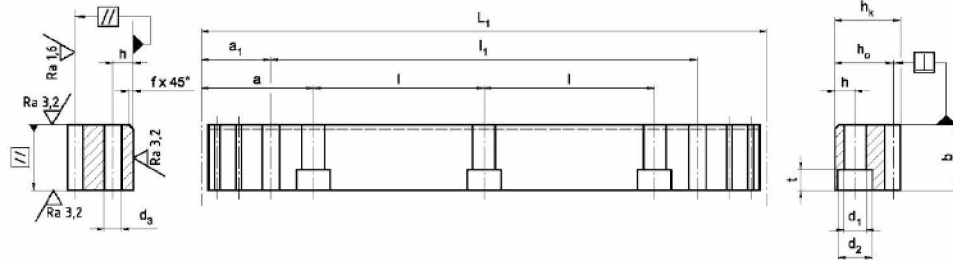


Fig. 2

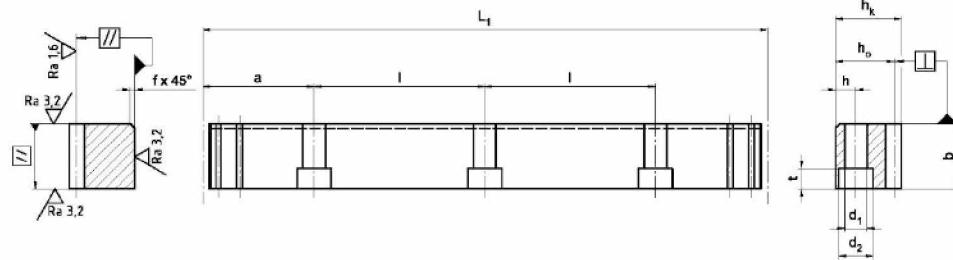
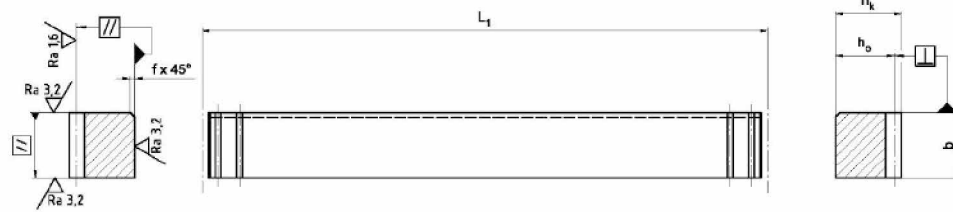


Fig. 3



| Standard lengths | m ¹⁾ | p ⁴⁾ | L ₁ | z ²⁾ | b | h _k | h _o | f | a | l | n ³⁾ | h | d ₁ | d ₂ | t | a ₁ | l ₁ | d ₃ | Dimensions |
|--------------------------------|-----------------|-----------------|----------------|-----------------|-----|----------------|----------------|----|------|--------|-----------------|----|----------------|----------------|----|----------------|----------------|----------------|------------|
| | - | mm | mm | - | mm | mm | mm | mm | mm | mm | - | mm | mm | mm | mm | mm | mm | mm | kg |
| ZST M2 - 24 x 24 x 1005 - G | 2 | 6.28 | 1005.3 | 160 | 24 | 24 | 22 | 2 | 62.8 | 125.66 | 8 | 8 | 7 | 11 | 7 | 31.3 | 942.7 | 5.7 | 4.2 |
| ZST M2 - 24 x 24 x 2010 - G | 2 | 6.28 | 2010.6 | 320 | 24 | 24 | 22 | 2 | 62.8 | 125.66 | 16 | 8 | 7 | 11 | 7 | 31.3 | 1948.0 | 5.7 | 8.4 |
| MST M2 - 24 x 24 x 201 - G | 2 | 6.28 | 201.0 | 32 | 24 | 24 | 22 | | | | | | | | | | | | 0.8 |
| ZST M3 - 29 x 29 x 1017 - G | 3 | 9.42 | 1017.9 | 108 | 29 | 29 | 26 | 2 | 63.6 | 127.23 | 8 | 9 | 10 | 15 | 9 | 34.4 | 949.1 | 7.7 | 6.0 |
| ZST M3 - 29 x 29 x 2035 - G | 3 | 9.42 | 2035.8 | 216 | 29 | 29 | 26 | 2 | 63.6 | 127.23 | 16 | 9 | 10 | 15 | 9 | 34.4 | 1967.0 | 7.7 | 12.0 |
| MST M3 - 29 x 29 x 198 - G | 3 | 9.42 | 198.0 | 21 | 29 | 29 | 26 | | | | | | | | | | | | 1.2 |
| ZST M4 - 39 x 39 x 1005 - G | 4 | 12.57 | 1005.3 | 80 | 39 | 39 | 35 | 3 | 62.8 | 125.66 | 8 | 12 | 10 | 15 | 9 | 37.5 | 930.3 | 7.7 | 10.7 |
| ZST M4 - 39 x 39 x 2010 - G | 4 | 12.57 | 2010.6 | 160 | 39 | 39 | 35 | 3 | 62.8 | 125.66 | 16 | 12 | 10 | 15 | 9 | 37.5 | 1935.6 | 7.7 | 21.4 |
| MST M4 - 39 x 39 x 201 - G | 4 | 12.57 | 201.0 | 16 | 39 | 39 | 35 | | | | | | | | | | | | 2.2 |
| ZST M5 - 49 x 39 x 1005 - G | 5 | 15.70 | 1005.3 | 64 | 49 | 39 | 34 | 3 | 62.8 | 125.66 | 8 | 12 | 14 | 20 | 13 | 30.1 | 945.0 | 11.7 | 13.1 |
| ZST M5 - 49 x 39 x 2010 - G | 5 | 15.70 | 2010.6 | 128 | 49 | 39 | 34 | 3 | 62.8 | 125.66 | 16 | 12 | 14 | 20 | 13 | 30.1 | 1950.4 | 11.7 | 26.2 |
| MST M5 - 49 x 39 x 204 - G | 5 | 15.70 | 204.0 | 13 | 49 | 39 | 34 | | | | | | | | | | | | 2.7 |
| ZST M6 - 59 x 49 x 1017 - G | 6 | 18.80 | 1017.9 | 54 | 59 | 49 | 43 | 3 | 63.6 | 127.23 | 8 | 16 | 18 | 26 | 17 | 31.4 | 955.0 | 15.7 | 20.2 |
| ZST M6 - 59 x 49 x 2035 - G | 6 | 18.80 | 2035.8 | 108 | 59 | 49 | 43 | 3 | 63.6 | 127.23 | 16 | 16 | 18 | 26 | 17 | 31.4 | 1973.0 | 15.7 | 40.4 |
| MST M6 - 59 x 49 x 207 - G | 6 | 18.80 | 207.0 | 11 | 59 | 49 | 43 | | | | | | | | | | | | 4.1 |
| ZST M8 - 79 x 79 x 1005 - G | 8 | 25.10 | 1005.3 | 40 | 79 | 79 | 71 | 3 | 62.8 | 125.66 | 8 | 25 | 22 | 33 | 21 | 26.6 | 952.0 | 19.7 | 44.3 |
| ZST M8 - 79 x 79 x 2010 - G | 8 | 25.10 | 2010.6 | 80 | 79 | 79 | 71 | 3 | 62.8 | 125.66 | 16 | 25 | 22 | 33 | 21 | 26.6 | 1957.3 | 19.7 | 88.6 |
| MST M8 - 79 x 79 x 201 - G | 8 | 25.10 | 201.0 | 8 | 79 | 79 | 71 | | | | | | | | | | | | 8.9 |
| ZST M10 - 99 x 99 x 1005 - G | 10 | 31.40 | 1005.3 | 32 | 99 | 99 | 89 | 3 | 62.8 | 125.66 | 8 | 32 | 33 | 48 | 32 | 125.7 | 754.0 | 19.7 | 68.7 |
| MST M10 - 79 x 79 x 219 - G | 10 | 31.40 | 219.0 | 7 | 79 | 79 | 69 | | | | | | | | | | | | 10.2 |
| ZST M12 - 120 x 120 x 1017 - G | 12 | 37.70 | 1017.9 | 27 | 120 | 120 | 108 | 3 | 63.6 | 127.23 | 8 | 40 | 39 | 58 | 38 | 127.2 | 763.4 | 19.7 | 109.0 |
| MST M12 - 99 x 99 x 263 - G | 12 | 37.70 | 263.0 | 7 | 99 | 99 | 87 | | | | | | | | | | | | 19.0 |

¹⁾ m Module ³⁾ n Number of holes
²⁾ z Number of teeth ⁴⁾ p Pitch (p=m*π)

any other lengths on request

2.2 Technical principles

Module pitches straight toothed

Tooth rack: Pressure angle $\alpha = 20^\circ$
milled, induction hardened

Outer surfaces: ground on all sides

Quality: 11 in accordance with DIN 3962, 3963, 3967

F_p (mm) Total pitch deviation

F_p/1000 (mm) 0,220 for a 1000 mm Length

Fig. 1

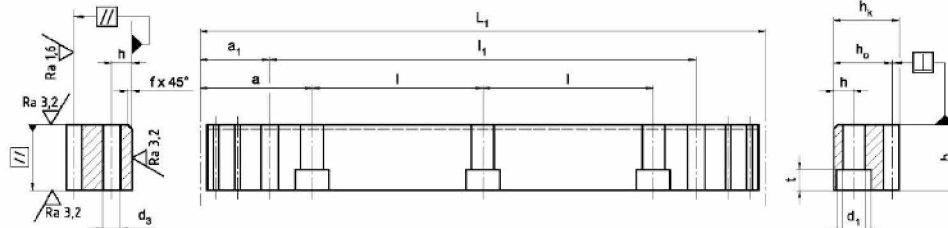


Fig. 2

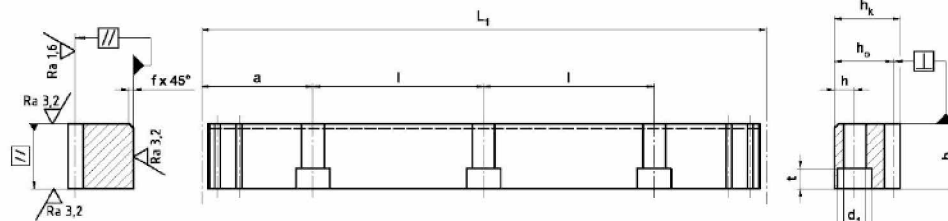
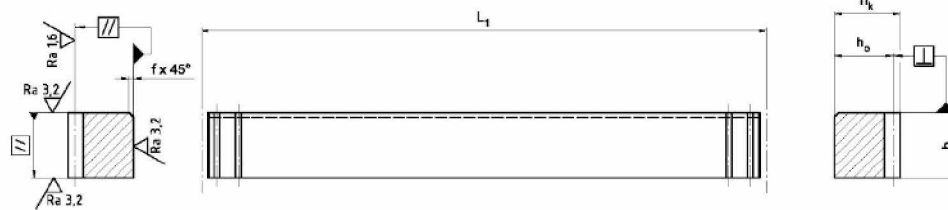


Fig. 3



| Standard lengths | m ¹⁾ | p ⁴⁾ | L ₁ | z ²⁾ | b | h _k | h _o | f | a | l | n ³⁾ | h | d ₁ | d ₂ | t | a ₁ | l ₁ | d ₃ | Dimensions |
|--------------------------------|-----------------|-----------------|----------------|-----------------|-----|----------------|----------------|----|------|--------|-----------------|----|----------------|----------------|----|----------------|----------------|----------------|------------|
| | - | mm | mm | - | mm | mm | mm | mm | mm | mm | - | mm | mm | mm | mm | mm | mm | mm | kg |
| ZST M2 - 24 x 24 x 1005 - G | 2 | 6.28 | 1005.3 | 160 | 24 | 24 | 22 | 2 | 62.8 | 125.66 | 8 | 8 | 7 | 11 | 7 | 31.3 | 942.7 | 5.7 | 4.2 |
| ZST M2 - 24 x 24 x 2010 - G | 2 | 6.28 | 2010.6 | 320 | 24 | 24 | 22 | 2 | 62.8 | 125.66 | 16 | 8 | 7 | 11 | 7 | 31.3 | 1948.0 | 5.7 | 8.4 |
| MST M2 - 24 x 24 x 201 - G | 2 | 6.28 | 201.0 | 32 | 24 | 24 | 22 | | | | | | | | | | | | 0.8 |
| ZST M3 - 29 x 29 x 1017 - G | 3 | 9.42 | 1017.9 | 108 | 29 | 29 | 26 | 2 | 63.6 | 127.23 | 8 | 9 | 10 | 15 | 9 | 34.4 | 949.1 | 7.7 | 6.0 |
| ZST M3 - 29 x 29 x 2035 - G | 3 | 9.42 | 2035.8 | 216 | 29 | 29 | 26 | 2 | 63.6 | 127.23 | 16 | 9 | 10 | 15 | 9 | 34.4 | 1967.0 | 7.7 | 12.0 |
| MST M3 - 29 x 29 x 198 - G | 3 | 9.42 | 198.0 | 21 | 29 | 29 | 26 | | | | | | | | | | | | 1.2 |
| ZST M4 - 39 x 39 x 1005 - G | 4 | 12.57 | 1005.3 | 80 | 39 | 39 | 35 | 3 | 62.8 | 125.66 | 8 | 12 | 10 | 15 | 9 | 37.5 | 930.3 | 7.7 | 10.7 |
| ZST M4 - 39 x 39 x 2010 - G | 4 | 12.57 | 2010.6 | 160 | 39 | 39 | 35 | 3 | 62.8 | 125.66 | 16 | 12 | 10 | 15 | 9 | 37.5 | 1935.6 | 7.7 | 21.4 |
| MST M4 - 39 x 39 x 201 - G | 4 | 12.57 | 201.0 | 16 | 39 | 39 | 35 | | | | | | | | | | | | 2.2 |
| ZST M5 - 49 x 39 x 1005 - G | 5 | 15.70 | 1005.3 | 64 | 49 | 39 | 34 | 3 | 62.8 | 125.66 | 8 | 12 | 14 | 20 | 13 | 30.1 | 945.0 | 11.7 | 13.1 |
| ZST M5 - 49 x 39 x 2010 - G | 5 | 15.70 | 2010.6 | 128 | 49 | 39 | 34 | 3 | 62.8 | 125.66 | 16 | 12 | 14 | 20 | 13 | 30.1 | 1950.4 | 11.7 | 26.2 |
| MST M5 - 49 x 39 x 204 - G | 5 | 15.70 | 204.0 | 13 | 49 | 39 | 34 | | | | | | | | | | | | 2.7 |
| ZST M6 - 59 x 49 x 1017 - G | 6 | 18.80 | 1017.9 | 54 | 59 | 49 | 43 | 3 | 63.6 | 127.23 | 8 | 16 | 18 | 26 | 17 | 31.4 | 955.0 | 15.7 | 20.2 |
| ZST M6 - 59 x 49 x 2035 - G | 6 | 18.80 | 2035.8 | 108 | 59 | 49 | 43 | 3 | 63.6 | 127.23 | 16 | 16 | 18 | 26 | 17 | 31.4 | 1973.0 | 15.7 | 40.4 |
| MST M6 - 59 x 49 x 207 - G | 6 | 18.80 | 207.0 | 11 | 59 | 49 | 43 | | | | | | | | | | | | 4.1 |
| ZST M8 - 79 x 79 x 1005 - G | 8 | 25.10 | 1005.3 | 40 | 79 | 79 | 71 | 3 | 62.8 | 125.66 | 8 | 25 | 22 | 33 | 21 | 26.6 | 952.0 | 19.7 | 44.3 |
| ZST M8 - 79 x 79 x 2010 - G | 8 | 25.10 | 2010.6 | 80 | 79 | 79 | 71 | 3 | 62.8 | 125.66 | 16 | 25 | 22 | 33 | 21 | 26.6 | 1957.3 | 19.7 | 88.6 |
| MST M8 - 79 x 79 x 201 - G | 8 | 25.10 | 201.0 | 8 | 79 | 79 | 71 | | | | | | | | | | | | 8.9 |
| ZST M10 - 99 x 99 x 1005 - G | 10 | 31.40 | 1005.3 | 32 | 99 | 99 | 89 | 3 | 62.8 | 125.66 | 8 | 32 | 33 | 48 | 32 | 125.7 | 754.0 | 19.7 | 68.7 |
| MST M10 - 79 x 79 x 219 - G | 10 | 31.40 | 219.0 | 7 | 79 | 79 | 69 | | | | | | | | | | | | 10.2 |
| ZST M12 - 120 x 120 x 1017 - G | 12 | 37.70 | 1017.9 | 27 | 120 | 120 | 108 | 3 | 63.6 | 127.23 | 8 | 40 | 39 | 58 | 38 | 127.2 | 763.4 | 19.7 | 109.0 |
| MST M12 - 99 x 99 x 263 - G | 12 | 37.70 | 263.0 | 7 | 99 | 99 | 87 | | | | | | | | | | | | 19.0 |

¹⁾ m Module ³⁾ n Number of holes
²⁾ z Number of teeth ⁴⁾ p Pitch (p=m*π)

any other lengths on request