

CHARACTERISTICS

- IN COMPLIANCE WITH 94/9/CE 'ATEX STANDARDS'

II 2GD CK IIC+H2
T100 °C IP65

- ONE OR TWO PUMP MODULES

- 3 LEVELS AVAILABLE:

- MINIMUM AND MAXIMUM FLOATING LEVEL

- MINIMUM AND MAXIMUM LASER LEVEL

- MINIMUM LEVEL CAPACITANCE

- "QUICK SWAP" PUMP MODULE: EASY OUTPUTS SUBSTITUTION WITHOUT DISRUPTION TO PIPE-WORK DURING PUMP MAINTENANCE

- RESERVOIR CAPACITY: 10 KG, 30 KG

- FLOW: 25cc/MIN

A COMPACT GREASE PUMP PACKAGE SUITABLE FOR POTENTIALLY HAZARDOUS AREAS

Mini-SUMO Atex is a MiniSumo variant in compliance with 94/9/CE 'ATEX standards', engineered for potentially hazardous areas.

The electric mini-SUMO Atex pump is fully protected against the external environment and can run without problems in the most severe ambient conditions.

The mini-SUMO Atex Pump is ideal for those applications that use Series 26 - progressive system and O2 Dual Line System. It is designed to feed oil and grease lubrication systems and is compatible with greases up to grade NLGI-2.

ZERO DOWNTIME DURING PUMP MAINTENANCE

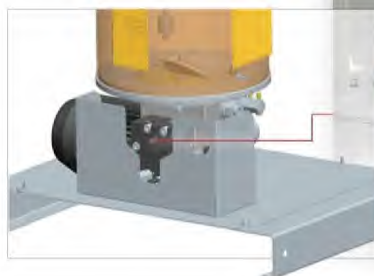
The QUICKSWAP SYSTEM allows to quickly replacement of the PUMP MODULES simply by removing and replacing with new ones. No pipe work needs to be disrupted and this means lower possibility of contamination.



ENGINEERED FOR POTENTIALLY HAZARDOUS AREAS
II 2GD CK IIC+H2 T100 °C IP65

APPLICATION

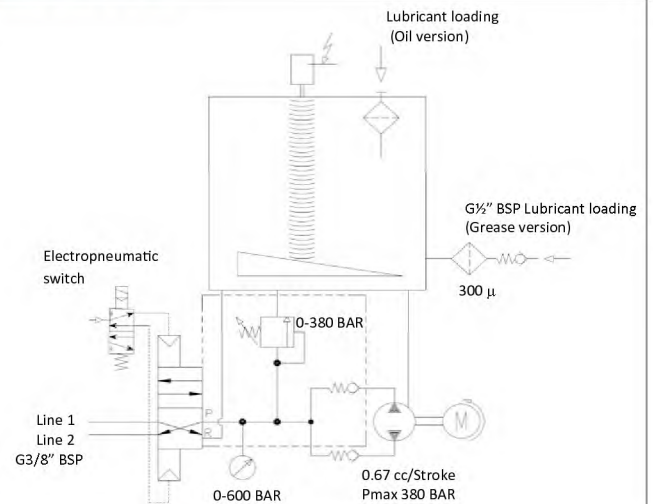
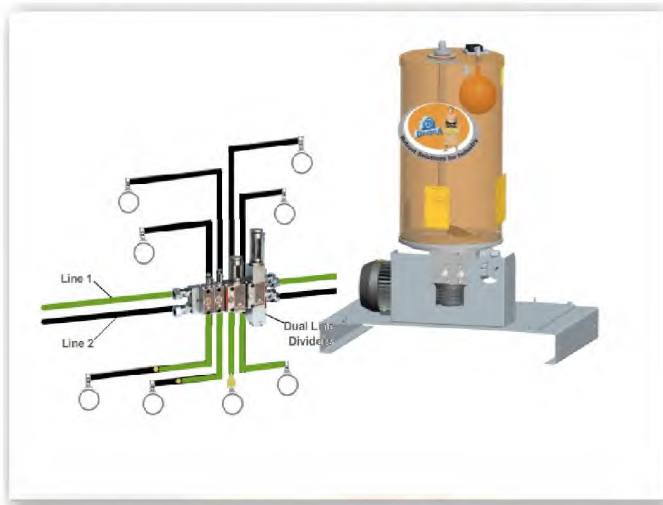
- HAZARDOUS AREAS
- STEEL INDUSTRY
- OIL&GAS INDUSTRY



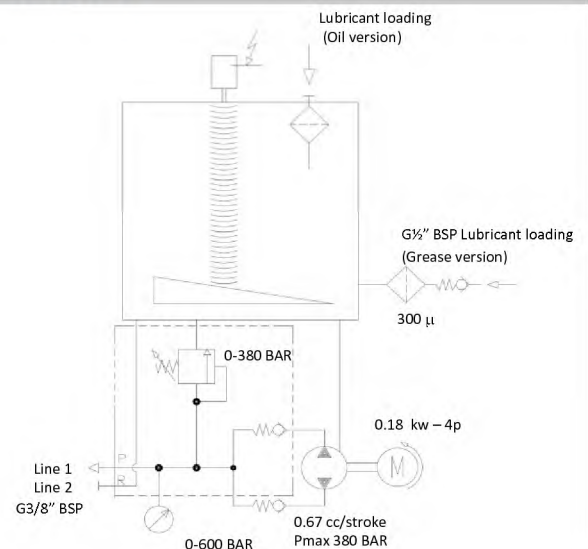
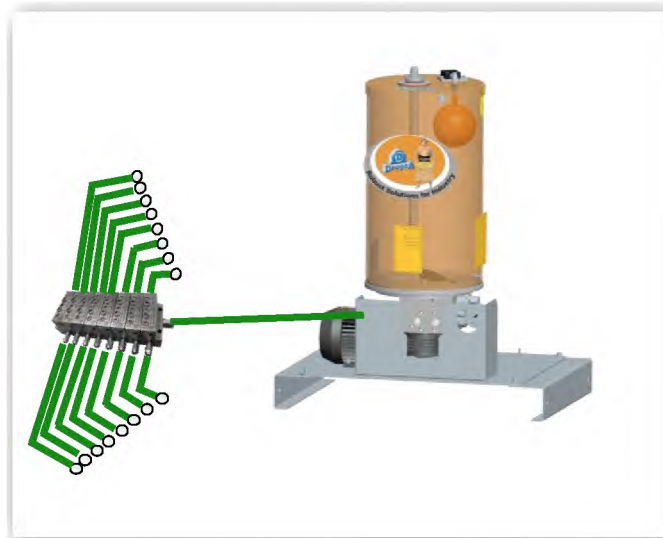
FULLY PROTECTED AGAINST THE EXTERNAL ENVIRONMENT
CAN RUN WITHOUT PROBLEMS
IN THE MOST SEVERE AMBIENT CONDITIONS

LUBRICATION SYSTEM EXAMPLES

HYDRAULIC DIAGRAM FOR GREASE PUMP WITH ELECTROPNEUMATIC SWITCH – DUAL LINE SYSTEM



- HYDRAULIC DIAGRAM FOR STANDARD PUMP WITH SINGLE GREASE OUTLET – PROGRESSIVE SYSTEM

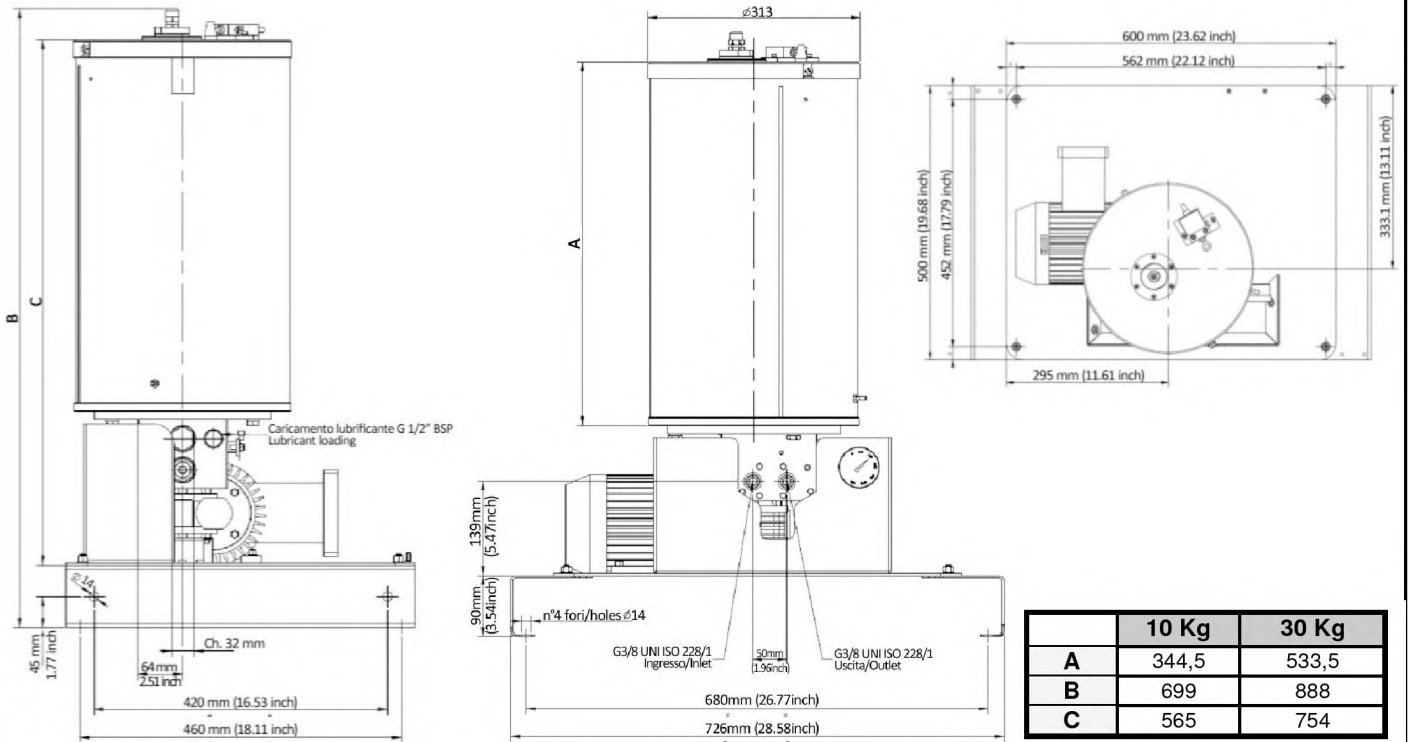


TECHNICAL INFORMATION

GENERAL CHARACTERISTICS	
Empty weight (10 Kg reservoir)	62 Kg
Empty weight (30 Kg reservoir)	65 Kg
Empty weight pump without reservoir	42 Kg
ELECTRICAL CHARACTERISTICS	
Motor power supply	3 Ph - 0,25 Kw - 230Δ/400Y 50/60 Hz – Maximum working voltage 690V.
Motor degree of protection	IP 65
Minimum and maximum level	Capacitive-laser-ultrasounds
HYDRAULIC CHARACTERISTICS	
Pumping system	Piston
Flow rate (per pumping element)	25 cc/min
Maximum operating pressures	380 bar
Outlet connection	G3/8" BSP
Loading filter	Degree of filtering 300 μ
By-pass	Adjustable 0÷380 bar – precalibrated 300 bar
Temperature of use	- 5 ÷ + 50 °C
Operating humidity	90 % rel. humidity
Permitted lubricants	Mineral lubricating oil min 32 cSt; grease max NLGI2

OVERALL DIMENSIONS (NOT TO SCALE)

VERSION WITH RESERVOIR



VERSION WITHOUT RESERVOIR

