



HYDRAULIC INVERTER FOR SUMO AND MINI-SUMO

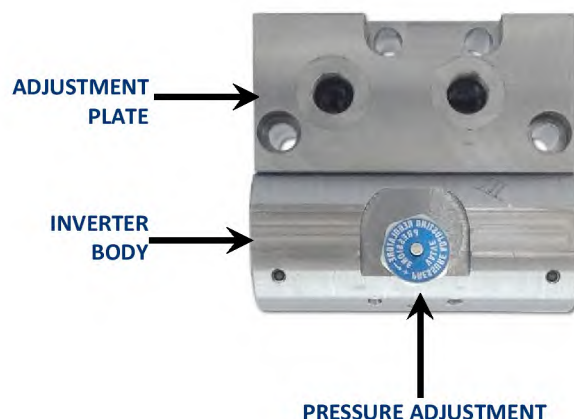
HYDRAULIC INVERTER FOR SUMO AND MINI-SUMO PUMPS

The hydraulic inverter has been designed to invert lubricant flow in discharge line of a dual-line system.

It can be used with either oil or grease to a maximum pressure of 4351 psi (300 bar).

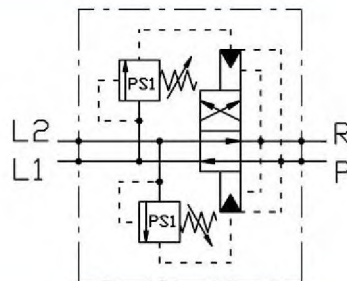
Equipped with only one turret, unlike the other inverters of our production, it allows to calibrate the pressure of both discharge lines with a single adjustment.

The inverter, mounted on the SUMO and Mini-SUMO, allows these two electric pumps to be used on dual-line systems, without necessity of an external control of line inversions.



Adjustment plate for Dropsa **SUMO** e **Mini-SUMO** pumps

HYDRAULIC DIAGRAM



HYDRAULIC INVERTER ASSEMBLED ON Mini-SUMO and SUMO ELECTRIC PUMPS



SUMO

The hydraulic inverter shown in these pictures is equipped with pressure gauges (not standard), which displays the pressures in discharge lines.



Mini-SUMO