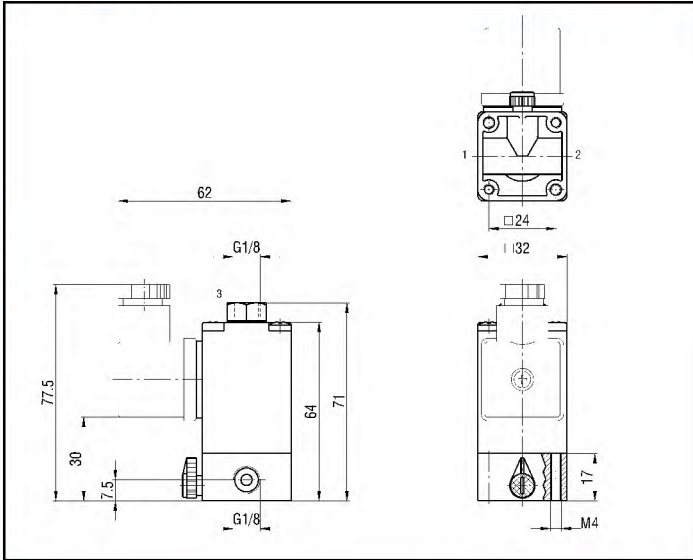


2

### 3 PORT G 1/8



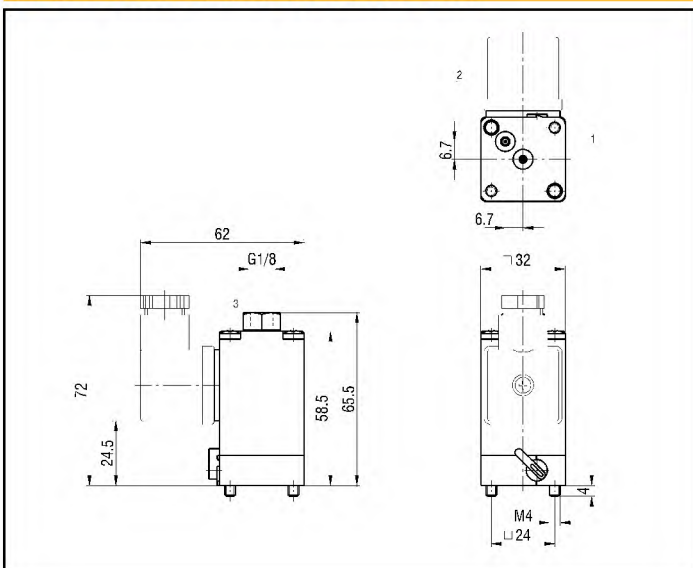
### 3 PORT WITH INTERFACE FOR MULTI-STATION BASES AND POPPET / ex CETOP VALVES (WITH FIXED POSITION)

| Symbol | Function | Controls |                   | Response time at 6 bar (ms) |        | Flow rate at 6 bar $\Delta P = 1$ bar (Nl/min) | Manual override | Weight (g) | TYPE*   |
|--------|----------|----------|-------------------|-----------------------------|--------|--|-----------------|------------|---------|
|        |          | Pilot    | Return            | Pilot                       | Return |  |                 |            |         |
|        | 3/2 N.O. | Solenoid | Mechanical spring | 15                          | 20     | 80   | -               | 200        | ULASG/R |
|        | 3/2 N.C. | Solenoid | Mechanical spring | 15                          | 20     | 80   | -               | 200        | ULCSG/R |
|        | 3/2 N.O. | Solenoid | Mechanical spring | 15                          | 20     | 80   | Manual bistable | 200        | ULASV/R |
|        | 3/2 N.C. | Solenoid | Mechanical spring | 15                          | 20     | 80   | Manual bistable | 200        | ULCSV/R |

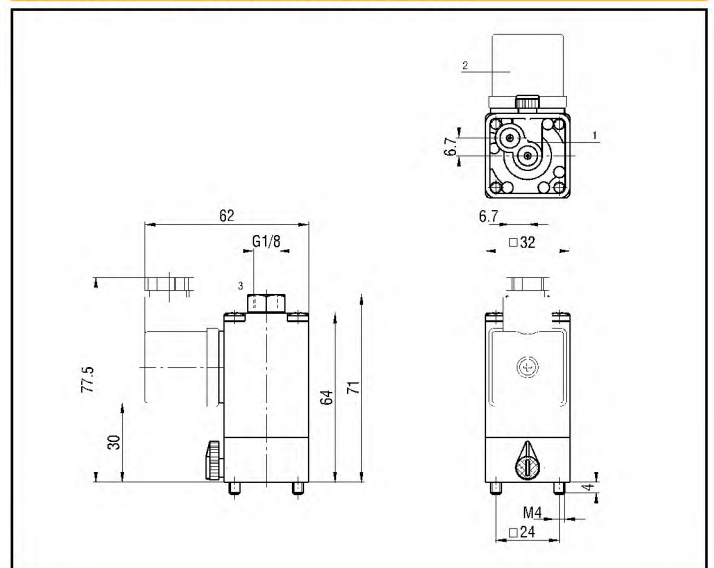
\* SPECIFY THE VOLTAGE IN THE ORDER 02400 = 24 V DC 11050-60 = 110 V AC  
 E.G.: ULARG/R02450-60 02450-60 = 24 V AC 22050-60 = 220 V AC

PS. 1: For body valve in zamak add the letter "A" to the type.  
 E.G.: 3/2 N.C. with manual override, body in zamak ULCSV/RA + voltage.  
 PS. 2: For body valve in plastic and universal interface strip change the letter "R" of the type with the letter "U".  
 E.G.: 3/2 N.C. with manual override, body in plastic ULCSV/U + voltage.

### 3 PORT WITH PLASTIC INTERFACE STRIP



### 3 PORT WITH ZAMAK INTERFACE STRIP



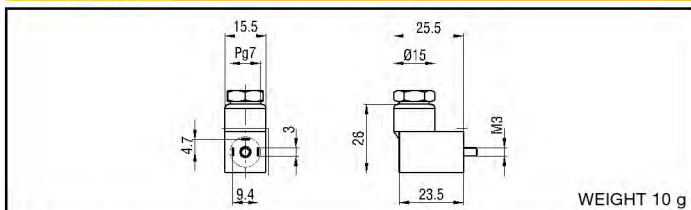
# Connectors for solenoid valves side 15 mm series UM

# series MEK192/N

## TECHNICAL DATA

|                            |   |
|----------------------------|---|
| Voltages                   | DC: MAX. 300 V<br>AC: MAX. 250 V  |
| Working temperature        | -40 ÷ +90 °C  |
| Versions                   | Basic<br>With indicator light (LED)<br>With indicator light (LED) and varistat (VDR) as electrical protection |
| Number of pins             | 2 + earthed   |
| Nominal current            | 6 A   |
| Maximum current            | 10 A  |
| Contacts resistance        | ≤ 4 mOhm  |
| Protection class           | IP 65 EN 60529  |
| Connector insulation class | IEC 664 / VDE 0110-1/89   |

## MEK192/N



| DESCRIPTION  | TYPE                       |
|--|----------------------------|
| Basic connector                                    | MEK192/N                   |
| Connector with led + VDR as protection 24 V DC/AC  | MEK192/NVD 24V CC/CA       |
| Connector with led + VDR as protection 110 V DC/AC | MEK192/NVD 110V CC/CA      |
| Connector with led + VDR as protection 220 V DC/AC | MEK192/NVD 220V CC/CA      |
| Connector with led 24 V DC/AC                      | MEK192/NLED 24V CC/CA      |
| Connector with led 110/220 V DC/AC                 | MEK192/NLED 110/220V CC/CA |

2

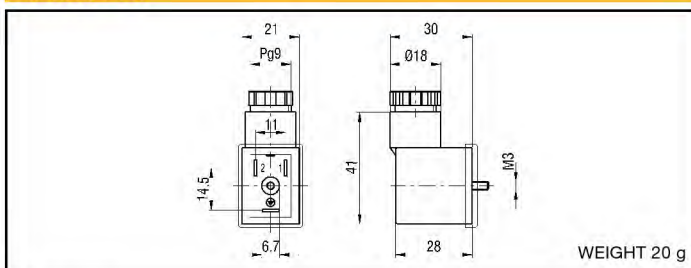
# Connectors DIN 46244 for coils side 22 mm series USB and series WE (3A)

# series USR102/N9

## TECHNICAL DATA

|                            |   |
|----------------------------|---|
| Voltages                   | DC: MAX. 300 V<br>AC: MAX. 250 V  |
| Working temperature        | -40 ÷ +90 °C  |
| Versions                   | Basic<br>With indicator light (LED)<br>With indicator light (LED) and varistat (VDR) as electrical protection |
| Number of pins             | 2 + earthed   |
| Nominal current            | 10 A  |
| Maximum current            | 16 A  |
| Contacts resistance        | ≤ 4 mOhm  |
| Protection class           | IP 65 EN 60529  |
| Connector insulation class | IEC 664 / VDE 0110-1/89   |

## USR102/N9



| DESCRIPTION  | TYPE                         |
|--|------------------------------|
| Basic connector                                    | USR102/N9                    |
| Connector with led + VDR as protection 24 V DC/AC  | USR102/N9VD 24 V CC/CA       |
| Connector with led + VDR as protection 110 V DC/AC | USR102/N9VD 110 V CC/CA      |
| Connector with led + VDR as protection 220 V DC/AC | USR102/N9VD 220 V CC/CA      |
| Connector with led 24 V DC/AC                      | USR102/N9LED 24 V CC/CA      |
| Connector with led 110/220 V DC/AC                 | USR102/N9LED 110/220 V CC/CA |

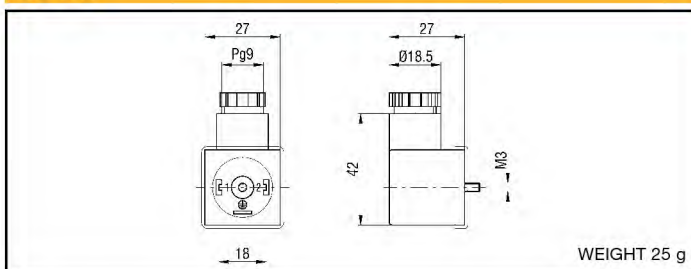
# Connectors DIN 43650 - form "A" for solenoid valves side 30 mm series UL and coils series USBG and series WE (2A, 5A)

# series ULR1B

## TECHNICAL DATA

|                            |   |
|----------------------------|---|
| Voltages                   | DC: MAX. 300V<br>AC: MAX. 250V  |
| Working temperature        | -40 ÷ +90 °C  |
| Versions                   | Basic<br>With indicator light (LED)<br>With indicator light (LED) and varistat (VDR) as electrical protection |
| Number of pins             | 2 + earthed   |
| Nominal current            | 6 A   |
| Maximum current            | 10 A  |
| Contacts resistance        | ≤ 4 mOhm  |
| Protection class           | IP 65 EN 60529  |
| Connector insulation class | IEC 664 / VDE 0110-1/89   |

## ULR1B



| DESCRIPTION  | TYPE                      |
|--|---------------------------|
| Basic connector                                    | ULR1B                     |
| Connector with led + VDR as protection 24 V DC/AC  | ULR1B/VD 24 V CC/CA       |
| Connector with led + VDR as protection 110 V DC/AC | ULR1B/VD 110 V CC/CA      |
| Connector with led + VDR as protection 220 V DC/AC | ULR1B/VD 220 V CC/CA      |
| Connector with led 24 V DC/AC                      | ULR1B/LED 24 V CC/CA      |
| Connector with led 110/220 V DC/AC                 | ULR1B/LED 110/220 V CC/CA |



## DESCRIPTION

The type "XVF4" identifies a 3/2 N.C. amplifier valve that changes low pressure signals into pneumatic signals (1 ÷ 8 bar).  
Valve type "XVF5" is instead a 3/2 N.O. amplifier valve that changes negative pneumatic signals into pneumatic signals (1 ÷ 7 bar).

Both of them are suitable to pilot directly the valves series "UDS" and "UK" with the same mounting than solenoid valves series "UL".

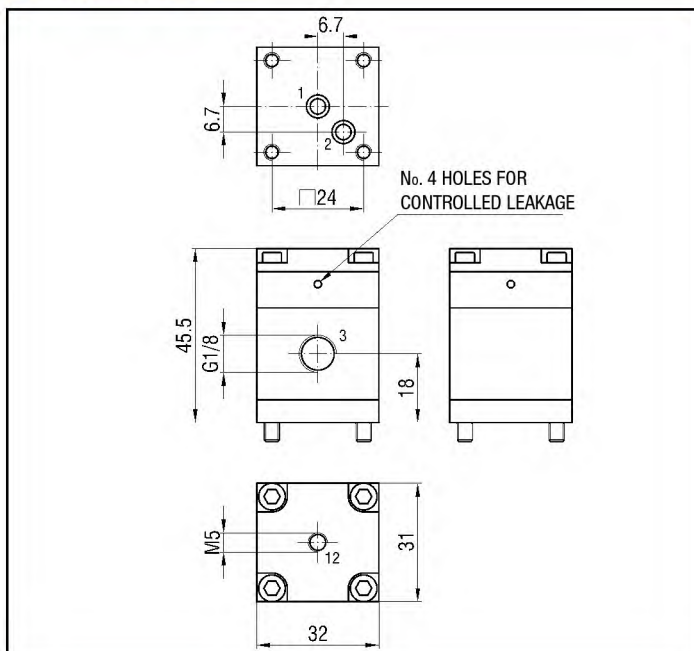
For single mounting there is the sub-base type "XVB" (see on page 2.8) while for manifold mounting there are the bases type "ULP" (see on page 2.7).



## TECHNICAL DATA

|                                |  |
|--------------------------------|--|
| Operating pressure             | XVF4: 1 ÷ 8 bar<br>XVF5: 1 ÷ 7 bar                             |
| Working temperature            | 0 ÷ +60 °C (-10 °C with dry air)                               |
| Fluid                          | Filtered, unlubricated or continuous lubricated compressed air |
| Piloting pressure              | XVF4: 500 mbar<br>XVF5: -500 mbar                              |
| Maximum frequency              | 50 Hz  |
| Flow rate                      | 500 NI/min at 6 bar  |
| Controlled leakage consumption | 1,4 NI/min at 7 bar  |
| Piloting hole                  | M5   |

## DIMENSIONS XVF



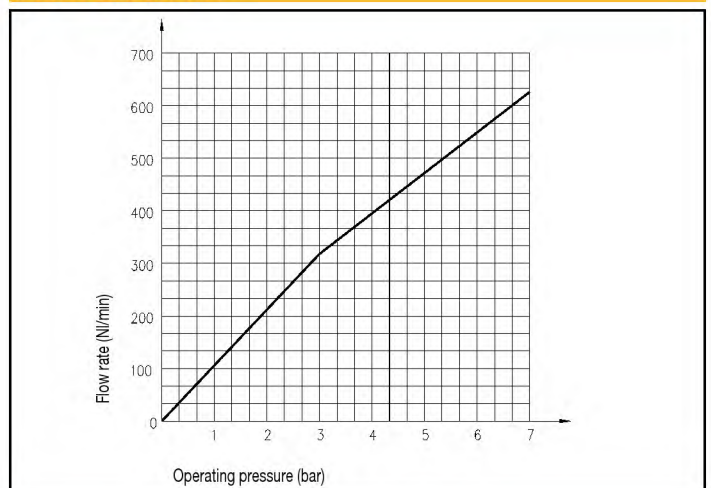
## MATERIALS

|               |                          |
|---------------|--------------------------|
| Control rod   | Aluminium                |
| Body          | Anodized aluminium alloy |
| Springs       | Phosphor bronze          |
| Seals         | NBR rubber               |
| Washer        | Aluminium                |
| Fixing screws | White galvanized steel   |

## SPARE PARTS

|           |            |
|-----------|------------|
| SEALS KIT |            |
| XVF       | XVF/SG/4-5 |

## FLOW CHART XVF



## 3 PORT

| Symbol | Function | Controls  |                   | Response times at 6 bar (ms) |        | Flow rate at 6 bar<br>ΔP=1 bar<br>(NI/min) | Weight<br>(g) | TYPE |
|--------|----------|-----------|-------------------|------------------------------|--------|--|---------------|------|
|        |          | Actuation | Return            | Actuation                    | Return |  |               |      |
|        | 3/2 N.C. | Pneumatic | Mechanical spring | 26,64                        | 38,42  | 500  | 10,5          | XVF4 |
|        | 3/2 N.O. | Vacuum    | Mechanical spring | 21,14                        | 32,66  | 500  | 10,5          | XVF5 |

# series UDS CETOP

Valves to ex CETOP RP 32 P  
standard pilot and solenoid  
actuated sizes 05 - 12 - 35

## DESCRIPTION

Valves series "UDS CETOP" are produced in the 5/2 and 5/3 pneumatic functions according to the interface to ex CETOP RP 32 P standard and they are mounted onto single bases, bottom or side ported, or onto manifold bases, bottom ported.

All the solenoid actuated versions support the 32 mm direct acting solenoid valve type ULCSV/R (with fixed position) or the amplifier valve type XVF4 for a sensible pneumatic piloting (see page 3.36).



2

## TECHNICAL DATA

|                              |   |
|------------------------------|---|
| Operating pressure           | Monostable: 2,5 ÷ 10 bar<br>Bistable: 2 ÷ 10 bar                |
| Working temperature          | 0 ÷ +70 °C (-20 °C with dry air)                                |
| Fluid                        | Filtered, unlubricated or continuous lubricated compressed air  |
| Port size                    | Interface to ex CETOP RP 32 P standard                          |
| Pneumatic piloting port size | Interface to ex CETOP RP 32 P standard                          |
| Piloting solenoid valve      | ULCSV/R - see chapter Direct acting solenoid valves on page 2.6 |
| Pneumatic piloting valve     | XVF4 - see chapter Complementary valves on page 3.37            |
| Electric connector           | ULR1B - see chapter Connectors on page 2.15                     |

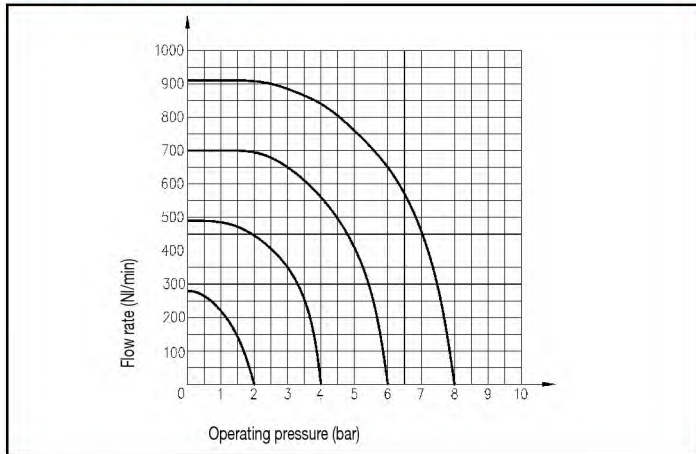
## MATERIALS

|                |                           |
|----------------|---------------------------|
| Bottoms        | Anodized aluminium alloy  |
| Body           | Anodized aluminium alloy  |
| Distance rings | Acetal resin              |
| Springs        | Galvanized steel          |
| Seals          | NBR rubber + steel insert |
| Spool          | Anodized aluminium alloy  |
| Piston         | Anodized aluminium alloy  |

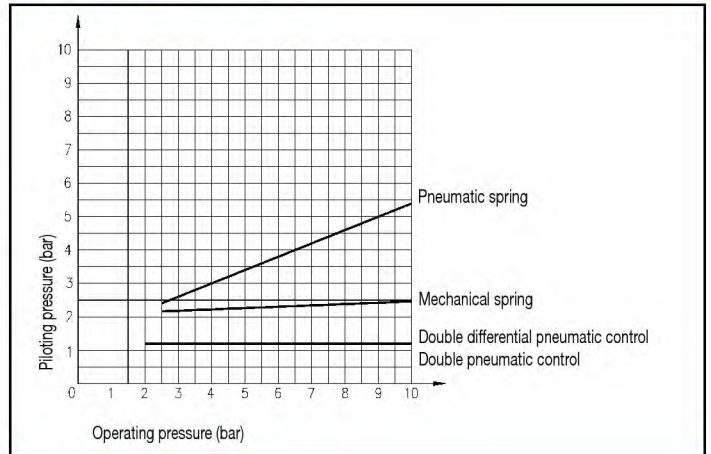
## SPARE PARTS

| SEALS KIT |           |
|-----------|-----------|
| Size 05   | UDS/SG/05 |
| Size 12   | UDS/SG/12 |
| Size 35   | UDS/SG/35 |

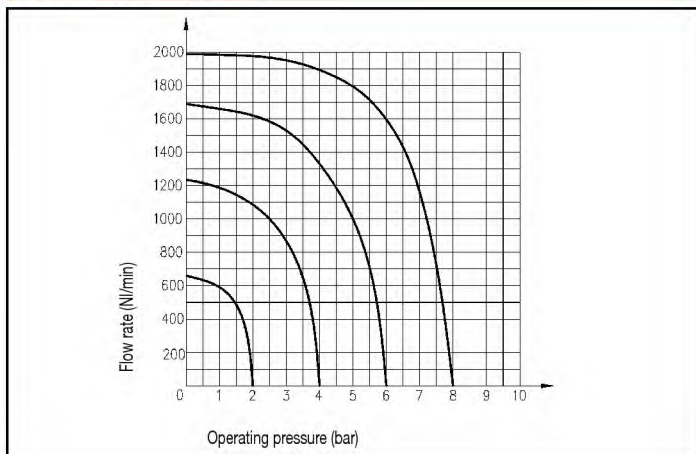
## FLOW CHART SIZE 05



## PILOTING CHART SIZE 05



## FLOW CHART SIZE 12



## PILOTING CHART SIZE 12

