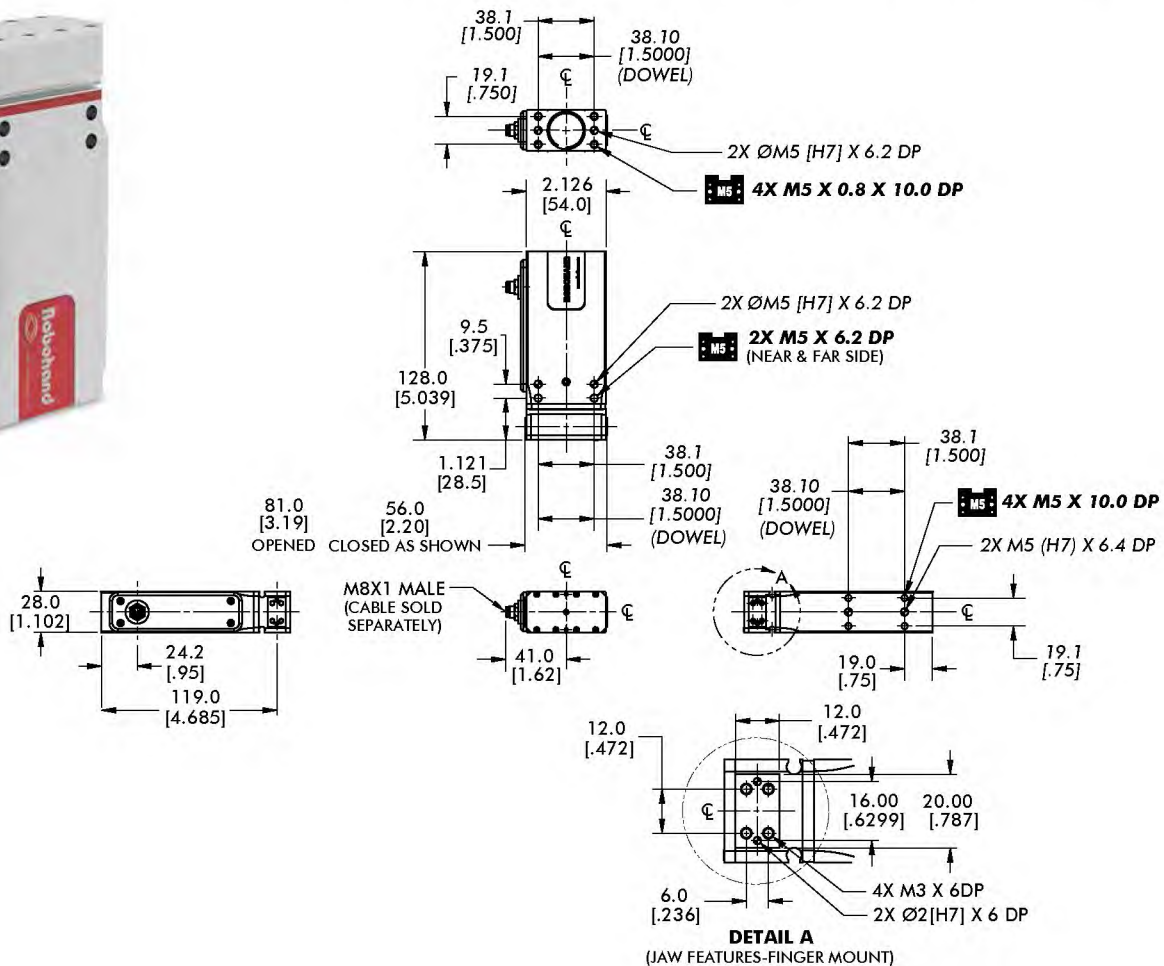


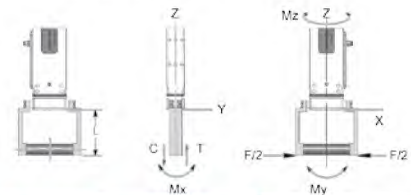
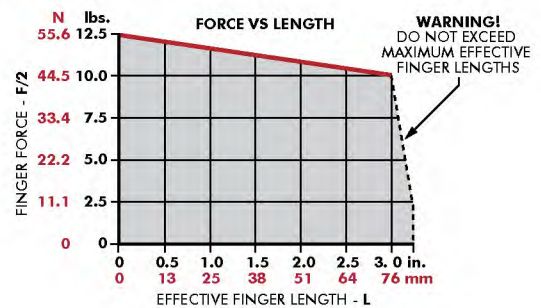
## Electric Parallel Grippers | Dimensions and Technical Specifications



### Specifications

Specifications	Units	DPE-200-25
Total Grip Force	N [lbf]	111 [25]
Stroke	mm [in]	25 [0.98]
Repeatability	mm [in]	±0.025 [0.001]
Accuracy	mm [in]	±0.051 [0.002]
Actuation Time	ms	250
Temperature Range	°C [°F]	5°~60° [41°~140°]
Power Requirement @ 100% duty cycle	W	4.2
Voltage	VDC	24
Current - Peak	amps	1.5 (max)
Current - Continuous	amps	0.175
Ingress Protection Class (IP)		IP54
Clean Room		1000 (Krytox)
Weight	kg [lbs]	0.53 [1.16]
Max Finger Length	mm [in]	76.2 [3.00]
Durability	cycles	20 Million

### Loading Information



DPE-200-25	Static
Maximum Tensile <b>T</b>	10 N [75 lbs]
Maximum Compressive <b>C</b>	10 N [75 lbs]
Maximum Moment <b>M<sub>x</sub></b>	14 Nm [120 in-lbs]
Maximum Moment <b>M<sub>y</sub></b>	17 Nm [150 in-lbs]
Maximum Moment <b>M<sub>z</sub></b>	14 Nm [120 in-lbs]

\*Capacities are per set of jaws and are not simultaneous