

Pneumatic Power Cylinders Type K and WK with end position control by magnetic field sensors.

- For the sizes

K and WK 400.... , K and WK 600... ,
K and WK 1000.... K and WK 3000... ,
K and WK 4500...

- Change of Model

Indicate „-A“ at the end of Model instead of „-1“ for standard version!

Example:

K400 – 15 – 6 – 1 change to K400 – 15 – 6 – A

WK 3000 – 50 – 6 – 1 change to WK 3000 – 50 – 6 – A

- Change in construction

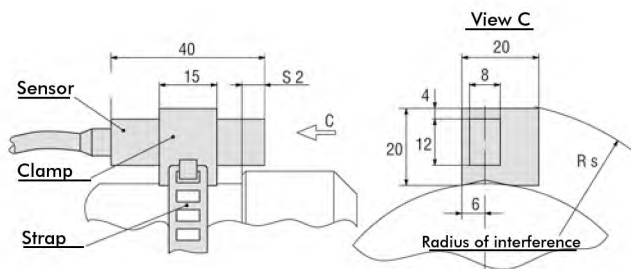
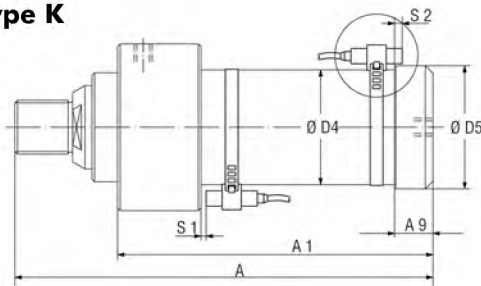
Only the dimensions Ø D4, Ø D5, A/A 1 and A9 are different to the standard version.



- Standard equipment (as shown above)

Pneumatic Power Cylinders with „-A“ at the end of Model are completely furnished with a magnetic piston ring and with two mounted sensor sets (Model SMB-102157, consisting of magnetic field sensor with 3m cable, clamp and strap)

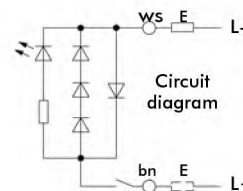
Type K



Switching points of sensors			**Differences of dimensions compared with standard version				
For sizes	S1*	S2*	Ø D4	Ø D5	A/A 1	A9	Rs
K 400-...-A	5	12	-	-	+15	-	44
K 1000-...-A	10	18	-	-	+15	-	56
K 3000-...-A	5	14	90	97	-	30	67
K 45000-...-A	5	12	106	113	-	28,5	75

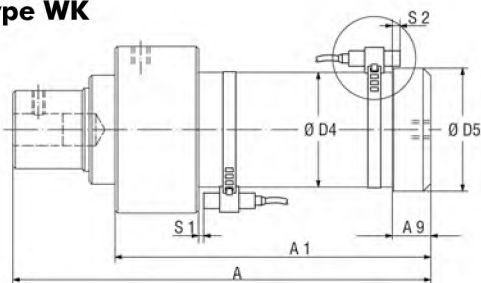
* Approx. data, because of magnet field variations. S1 refers to the max. power stroke and enlarges up to 60 mm, when smaller power strokes are used.

Circuit diagram and technical data of sensor set Model **SMB-102157**, consisting of magnetic field sensor with 3 m cable, clamp and strap (2 sets per cylinder are standard equipment).



Switching voltage	10...250 VAC/DC
Switching current	0,5 A
Switching power	20 W/30 VA
Function	normally open contact
Protection class	IP 67 (DIN 40050)
Indicator	LED

Type WK



Switching points of sensors			**Differences of dimensions compared with standard version				
For sizes	S1*	S2*	Ø D4	Ø D5	A/A 1	A9	Rs
WK 400-...-A	5	12	-	-	+15	-	44
WK 1000-...-A	10	18	-	-	+15	-	56
WK 3000-...-A	5	14	90	97	-	30	67
WK 45000-...-A	5	12	106	113	-	28,5	75

* Approx. data, because of magnet field variations. S1 refers to the max. power stroke and enlarges up to 60 mm, when smaller power strokes are used.