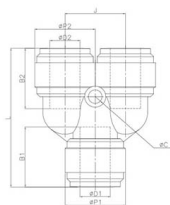


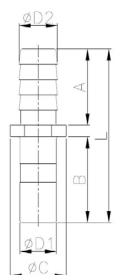
HUY



UNION Y
- Two way divider

REFERENCIA	ØD1	ØD2	B1	B2	ØP1	ØP2	L	J	C	Peso Weight(g)
HUY5/32-5/32	5/32	5/32	14,7	14,7	13,8	13,8	33,7	13,5	3,3	6,7
HUY3/16-3/16	3/16	3/16	15,0	15,0	13,8	13,8	34,1	13,5	3,3	6,8
HUY1/4-1/4	1/4	1/4	16,9	16,9	15,5	15,5	38,8	15,5	3,3	8,8
HUY5/16-5/16	5/16	5/16	17,5	17,5	17,6	17,6	41,0	17,6	4,5	11,8
HUY3/8-3/8	3/8	3/8	20,2	20,2	20,0	20,0	46,4	20,0	4,5	16,7
HUY1/2-1/2	1/2	1/2	25,1	25,1	23,0	23,0	56,8	23,0	4,5	25,1

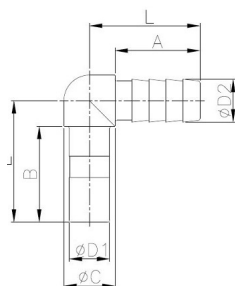
HCJB



CONECTOR DE TUBO CON ESPIGA
- Tube barb connector

REFERENCIA	ØD1	ØD2	ØC	L	A	B	Peso Weight(g)
HCJB1/4-1/4	1/4	6,85	11,8	39,0	18,0	18,0	1,2
HCJB5/16-5/16	5/16	8,60	12,2	40,0	18,0	19,0	2,1
HCJB3/8-3/8	3/8	10,0	14,7	45,5	20,0	22,5	2,5
HCJB3/8-5/16	3/8	8,60	14,7	43,5	18,0	22,5	2,6
HCJB1/2-3/8	1/2	10,0	18,5	50,5	20,0	27,5	4,1

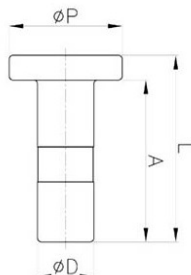
HLJB



CODO CON ESPIGA
- Elbow tube barb connector

REFERENCIA	ØD1	ØD2	ØC	L	E	A	B	Peso Weight(g)
HLJB3/8-5/16	3/8	8,6	12,0	24,0	28,5	18,0	22,5	3,1
HLJB3/8-3/8	3/8	10,0	12,0	26,0	28,5	20,0	22,5	3,3

HPP



TAPÓN MACHO
- Male plug

REFERENCIA	ØD	ØP	L	A	Peso Weight(g)
HPP5/32	5/32	13,0	22,5	19,0	0,8
HPP3/16	3/16	13,0	22,5	19,0	0,9
HPP1/4	1/4	13,0	24,5	21,0	1,2
HPP5/16	5/16	16,0	26,5	23,0	1,8
HPP3/8	3/8	18,0	30,0	26,0	2,7
HPP1/2	1/2	21,5	34,0	30,0	4,4