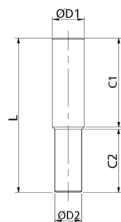


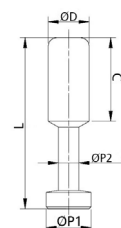
## IMOPIG



UNIÓN LISA REDUCIDA  
- Reduced junction

REFERENCIA	ØD1	ØD2	C1	C2	L	Peso Weight(g)
IMOPIG0604	6	4	18	17	36	0,6
IMOPIG0806	8	6	20	18	39	1,0
IMOPIG1008	10	8	25	20	46	1,9
IMOPIG1210	12	10	27	26	54	3,2

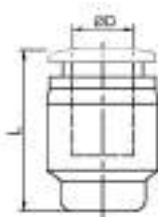
## IMOPP



TAPÓN MACHO  
- Male plug

REFERENCIA	ØD	L	ØP1	ØP2	C	Peso Weight(g)
IMOPP04	4	28	5,0	3,0	15,0	0,4
IMOPP06	6	33	7,0	3,0	17,0	0,8
IMOPP08	8	37	9,0	4,0	18,0	1,3
IMOPP10	10	42	11,0	5,0	20,5	2,2
IMOPP12	12	44	13,0	6,0	23,0	3,1

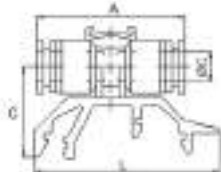
## IMOPPF



TAPÓN HEMBRA  
- Female plug

REFERENCIA	ØD	L	Peso Weight(g)
IMOPPF04	4	17,5	2,6
IMOPPF05	5	17,5	3,1
IMOPPF06	6	17,5	3,7
IMOPPF07	7	20,8	3,8
IMOPPF08	8	20,8	4,2
IMOPPF10	10	25,3	5,5
IMOPPF12	12	25,6	9,3
IMOPPF14	14	25,7	12,4
IMOPPF15	15	27,0	15,3

## IMOPUCPRD



UNIÓN RECTA TUBO-TUBO CON FIJACIÓN PARA PERFIL DIN O  $\Omega$   
- Union connector for DIN profile or  $\Omega$

REFERENCIA	ØD	A	L	C	Peso Weight(g)
IMOPUCPRD04	4	34,6	45,0	22,0	8,0
IMOPUCPRD06	6	35,2	45,0	22,0	8,0
IMOPUCPRD08	8	39,1	45,0	22,7	10,0
IMOPUCPRD10	10	45,2	45,0	24,7	17,0

## IMOPCV



ANILLO DE COLORES  
- Applicable sleeve color

REFERENCIA	ØA	COLOR STANDARD Standard Colours	Peso Weight(g)
IMOPCV04	4,3	● ● ● ● ●	0,10
IMOPCV06	6,3	● ● ● ● ●	0,14

APLICABLE SOLO SOBRE RACORES TERMOPLÁSTICOS.  
Applicable only on thermoplastic fittings

Nota: Marcar el color detrás de la referencia: Ej. IMOPCV04-AM (Amarillo)