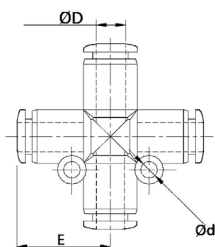


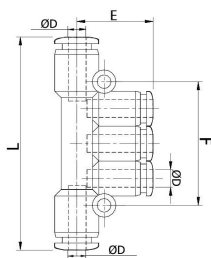
## IMOPZA



CRUZ TUBO  
- Cross junction

REFERENCIA	ØD1	ØD	E	Peso Weight(g)
IMOPZA04	4	3,2	17,5	8,0
IMOPZA06	6	3,2	19,3	10,2
IMOPZA08	8	3,2	22,8	13,6
IMOPZA10	10	4,2	27,0	28,2
IMOPZA12	12	4,3	29,6	34,2

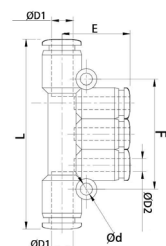
## IMOPK



DISTRIBUIDOR MULTIPLE TUBO  
- Union multi tee

REFERENCIA	ØD	L	F	E	Peso Weight(g)
IMOPK04	4	57,0	36	19,0	13,0
IMOPK06	6	61,6	42	20,3	17,0
IMOPK08	8	81,6	48	24,3	22,0

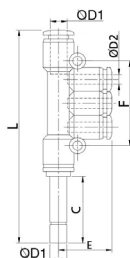
## IMOPKG



DISTRIBUIDOR MULTIPLE TUBO REDUCIDO  
- Reduced union multi tee

REFERENCIA	ØD1	ØD2	ØD	L	E	F	Peso Weight(g)
IMOPKG06-4	6	4	3,2	57,6	19,0	36	13,0
IMOPKG08-4	8	4	3,2	62,6	20,0	42	16,0
IMOPKG08-6	8	6	3,2	62,6	20,3	42	16,6
IMOPKG10-6	10	6	4,2	80,0	23,8	48	28,0
IMOPKG10-8	10	8	4,2	80,0	24,3	48	30,8

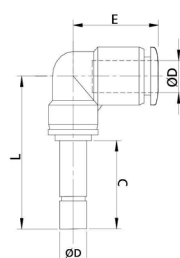
## IMOPKJ



DISTRIBUIDOR MÚLTIPLE CON ESPIGA LATERAL  
- Multi-tee union with lateral stem

REFERENCIA	ØD1	ØD2	Ød	L	E	F	Peso Weight(g)
IMOPKJ0604	6	4	74,8	19,0	36,0	18	17,0
IMOPKJ0804	8	4	82,3	20,0	42,0	21	19,0
IMOPKJ0806	8	6	82,3	20,3	42,0	21	23,4
IMOPKJ1006	10	6	104,5	23,8	48,0	24	31,0
IMOPKJ1008	10	8	104,5	24,3	48,0	24	39,7

## IMOPLJ



CODO CON ESPIGA  
- Elbow with stem

REFERENCIA	ØD	L	E	C	Peso Weight(g)
IMOPLJ04	4	33,0	17,5	16,0	7,6
IMOPLJ06	6	36,2	19,0	18,0	11,2
IMOPLJ08	8	42,5	22,8	21,0	17,0
IMOPLJ10	10	50,8	26,3	24,0	30,5
IMOPLJ12	12	54,5	29,6	26,0	40,6