

Pillow block bearing KSTM



- Maintenance-free, dry operation
- High rigidity
- Very high durability in varying loads
- Compensation of misalignment and edge loads
- Resistant to corrosion and chemicals
- High vibration-dampening
- Suitable for rotating, oscillating and linear movements
- Lightweight



Imperial dimensions available

▶ Page 1453



Lifetime calculation online

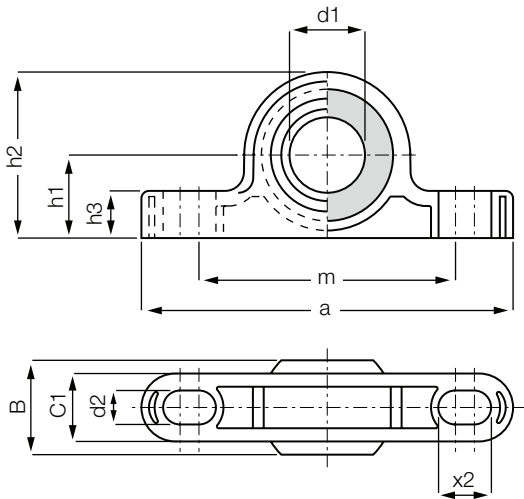
▶ www.igus.eu/igubal-expert

Technical data

Part No.	Max. static tensile strength		Max. axial static compressive strength	Max. tightening torque for longitudinal holes	Weight
	Short-term [N]	Long-term [N]			
KSTM-05	700	350	300	0.6	1.7
KSTM-06	1,100	550	300	1.3	2.9
KSTM-08	1,300	650	400	1.3	4.6
KSTM-10	1,500	750	500	2.5	8.6
KSTM-12	2,200	1,100	600	2.5	11.8
KSTM-14	2,400	1,200	600	4.5	18.4
KSTM-16	3,000	1,500	1,800	4.5	23.7
KSTM-18	3,500	1,750	1,200	10.5	32.2
KSTM-20	4,700	2,350	1,300	10.5	40.0
KSTM-22	6,100	3,050	1,400	10.5	54.0
KSTM-25	6,600	3,300	1,600	10.5	75.3
KSTM-30	8,100	4,050	2,100	21.5	116.8

The maximum tightening torques for longitudinal holes correspond to the permissible tightening torque of the fixing screws (fixing category 5.8).

Pillow block bearing KSTM



Order key

Type Size [mm]

K ST M -05

Dimensional series K	Pillow block bearing	Metric	Inner Ø
----------------------	----------------------	--------	---------

Material:

Housing: igumid G ► Page 1496

Spherical ball: iglidur® W300 ► Page 153

Dimensions [mm]

Part No.	d1 E10	B	C1	h1	h2	m	a	h3	d2	X2	Max. pivot angle
KSTM-05	5	8	6.0	7	14	25	34	4	3.3	4.6	30°
KSTM-06	6	9	7.0	10	18	33	43	5.5	4.5	6	29°
KSTM-08	8	12	9.0	10	20	33	47	6	4.5	7	25°
KSTM-10	10	14	10.5	14	26	46	62	7.5	5.5	8	25°
KSTM-12	12	16	12.0	14	28	46	65	8.5	5.5	9	25°
KSTM-14	14	19	13.5	18	34	60	82	9.5	6.6	11	23°
KSTM-16	16	21	15.0	18	36	60	86	10.5	6.6	12	23°
KSTM-18	18	23	16.5	22	42	68	93	11.5	9.0	13	23°
KSTM-20	20	25	18.0	22	44	68	98	13	9.0	14	23°
KSTM-22	22	28	20.0	24	48	74	108	14	9.0	16	22°
KSTM-25	25	31	22.0	27	54	86	124	16	9.0	17	22°
KSTM-30	30	37	25.0	32	64	96	139	17	11.0	20	22°